

Halifax Regional Municipality Street Trees

HALIFAX

Species and age class diversity is crucial to the health of Halifax's urban forest, helping to increase its resilience against pests and diseases. While native species are prioritized in the streets of Halifax, additional non-native species are planted to further buffer against pests and diseases. Those selected have demonstrated growth tolerance to urban conditions and a changing climate.

Halifax Regional Municipality plants a variety of tree species, including, but not limited to those listed below. A subset of these species are included in a vegetation management agreement between Halifax Regional Municipality and Nova Scotia Power.. This means that certain species (of a particular size, wood strength, and/or structure) are approved for planting under power lines – the exact list of species changes depending on the arrangement of the overhead infrastructure.



Red Maple

Acer rubrum (species and cultivars)

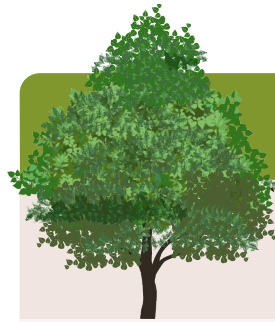
Large stature, medium - fast growing, red fall colour. Very tolerant of soils but prefers slightly acidic.



Leaf



Seed



Freeman Maple

Acer x freemannii (species and cultivars)

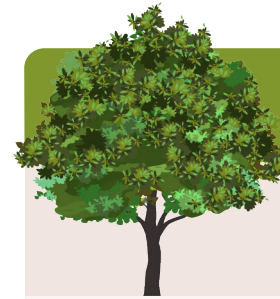
Large stature, fast growing, Cross between a red and a silver maple. Brilliant red-orange fall colour.



Leaf



Seed



Sugar Maple

Acer saccharum

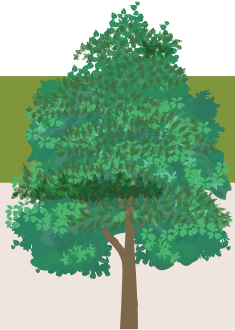
Large stature, slow growing. One of the best larger shade/lawn trees, but tends to suffer in extended periods of heat



Leaf



Seed



Pin Oak

Quercus macrocarpa

Large stature, one of the faster growing oaks, and one of the first oaks to bloom in the spring. Distinctive, dense growth habit.



Leaf



Seed



Red Oak

Quercus rubra

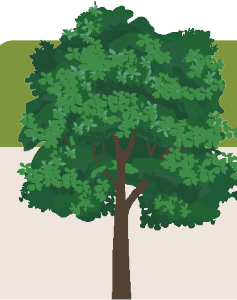
Large stature, one of the faster growing oaks, withstands the polluted air of cities.



Leaf



Seed



Bur Oak

Quercus macrocarpa

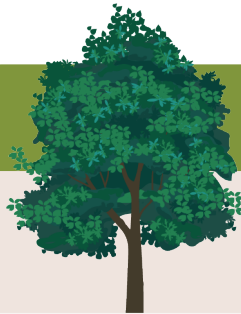
Large stature, slow growing. Very adaptable to various soils/more tolerant of city conditions than most oaks.



Leaf



Seed



Swamp White Oak

Quercus bicolor

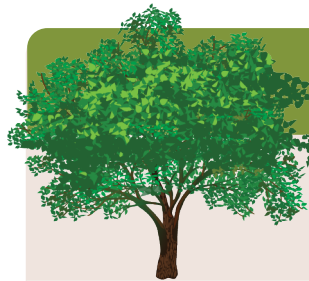
Large stature, slow growing, excellent drought resistance.



Leaf



Seed



American Elm

Ulmus americana

One of Halifax's most common street trees. Very hardy, large, vase shaped. Medium-fast growing. Grows well under a variety of conditions.



Leaf



Seed



Kentucky Coffeetree

Gymnocladus dioica

Slow-medium growth rate, large & doubly compound leaf. Very adaptable to drought and city conditions. One of the last trees to leaf out in the spring.



Leaf



Seed



European Beech

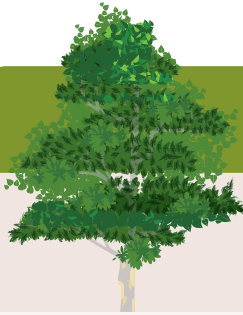
Fagus sylvatica

Slow-medium growth rate. Attractive smooth grey bark, dense canopy, resistant to beech bark disease. Tendency to retain leaves into the winter.



Leaf

Seed



American Sycamore

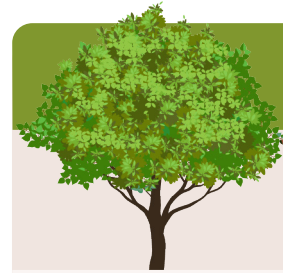
Platanus occidentalis

Large stature, fast growing, and very tolerant to urban conditions. Dense wide canopy, and impressive mottled bark.



Leaf

Seed



Sweetgum

Liquidambar styraciflua

Tolerant to wet conditions, medium-fast growing. Bright fall colour, symmetrical shape.



Leaf

Seed



Honeylocust

Gleditsia triacanthos Inermis

Very tolerant to urban conditions, fast growing, casts a light shade due to small leaflets. Only the thornless variety is planted in the right of way.



Leaf

Seed



Tuliptree

Liriodendron tulipifera

Large stature, fast growing. Large showy flowers blooming from May-June, suited to a wide climatic range.



Leaf

Flower



Cucumbertree

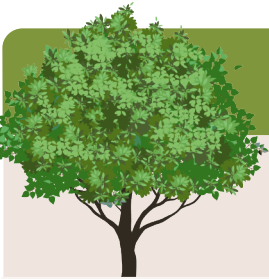
Magnolia acuminata

One of the largest magnolias, and one of the cold-hardest.



Leaf

Flower



Hedge Maple

Acer campestre

Small stature, slow growing. Extremely adaptable to various soil pH levels, dry soil and compaction.



Leaf

Seed



Crabapple

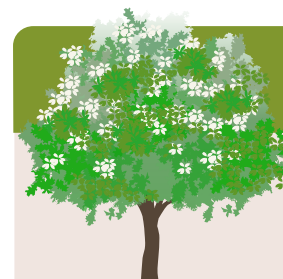
Malus x hybrids

Small stature, slow growing. Showy white, pink, or red flowers that open in spring before the leaves are fully grown.



Leaf

Fruit/Flower



Japanese Tree Lilac

Syringa reticulata

Small stature, showy flowers. Salt, drought and shade tolerant (full sun for best flowering).



Leaf

Flower



American Hophornbeam /Ironwood

Ostrya virginiana

Small stature, slow growing. Tolerant to shade and low soil volumes. Slow to establish after being planted, but once it does it makes excellent growth.



Leaf



Seed



Katsura

Cercidiphyllum japonicum

Medium-sized stature, medium—fast growth rate. Impressive colour: purplish in spring, blue-green in summer, red and yellow in autumn.



Leaf



Seed



Amur Maackia

Maackia amurensis

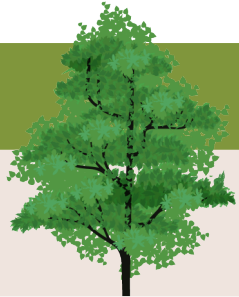
Medium-sized stature, medium growth rate. Fixes its own nitrogen in the soil, tolerant to drought and low soil volumes. Easily transplanted.



Leaf



Flower



Ginkgo (Male)

Ginkgo biloba

Large stature, slow growing. Extremely tolerant to urban conditions, unique fan shaped leaves. No know pests or diseases affect it.



Leaf



Fruit



Hackberry

Celtis occidentalis

Medium-large stature, medium-fast growth rate. Performs admirably under adverse conditions, interesting ridged bark.



Leaf



Seed



European Hornbeam

Carpinus betulus

Medium-sized stature, Slow-medium growth rate. Very tolerant to urban conditions, pruning seldom required although withstands heavy pruning.



Leaf



Seed



Basswood

Tilia americana

Large stature, medium growth rate. Very shade tolerant. Has a tendency to produce suckers at its base.



Leaf



Flower



Silver Linden

Tilia tomentosa

Large stature, medium growth rate. Tolerates heat and drought better than other lindens.



Leaf



Seed



Northern Catalpa

Catalpa speciosa

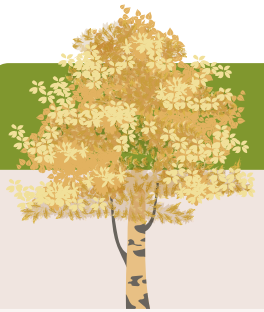
Large stature, medium-fast growth rate. Tolerant to varying soil conditions, grows in sun or partial shade. Large, heart shaped leaves.



Leaf



Seed



Yellow Birch

Betula alleghaniensis

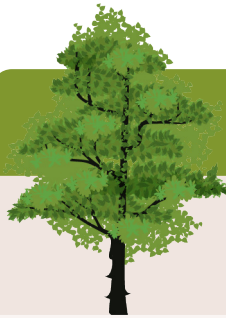
Large stature, medium growth rate. The largest and most shade tolerant of the eastern birches.



Leaf



Seed



Shagbark Hickory

Carya ovata

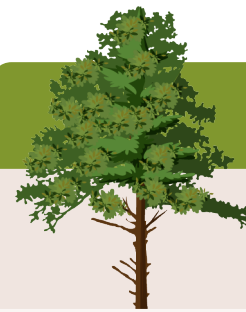
Large stature, slow growing. Sweet, edible fruit. Large, deep taproot. Unique bark - long, flat plates which are free at the base or both ends.



Leaf



Seed



White Pine

Pinus strobus

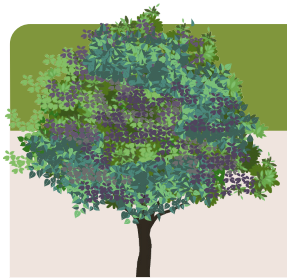
Large stature, one of the fastest growing landscape pines. Thrives in full sunlight, occurs naturally on a variety of sites (dry sandy soil, rocky ridges, sphagnum bogs).



Needles



Seed



Sycamore Maple

Large stature, medium growth rate. Withstands the full force of salt-laden winds in exposed places. Very adaptable to soil types.



Leaf



Seed



Dawn Redwood

Metasequoia glyptostroboides

Large stature, fast growing. Seldom requires pruning due to uniform conical habit, performs best in slightly acidic soils.



Needles



Seed



Tamarack

Larix laricina

Large, slender stature, slow-medium growth rate. Grows best in moist, well-drained, acidic soil. Intolerant of shade.



Needles



Seed