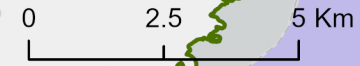




UPPER TANTALLON






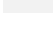
TRAVEL PATTERNS [TRAVEL MONITORING DATA]

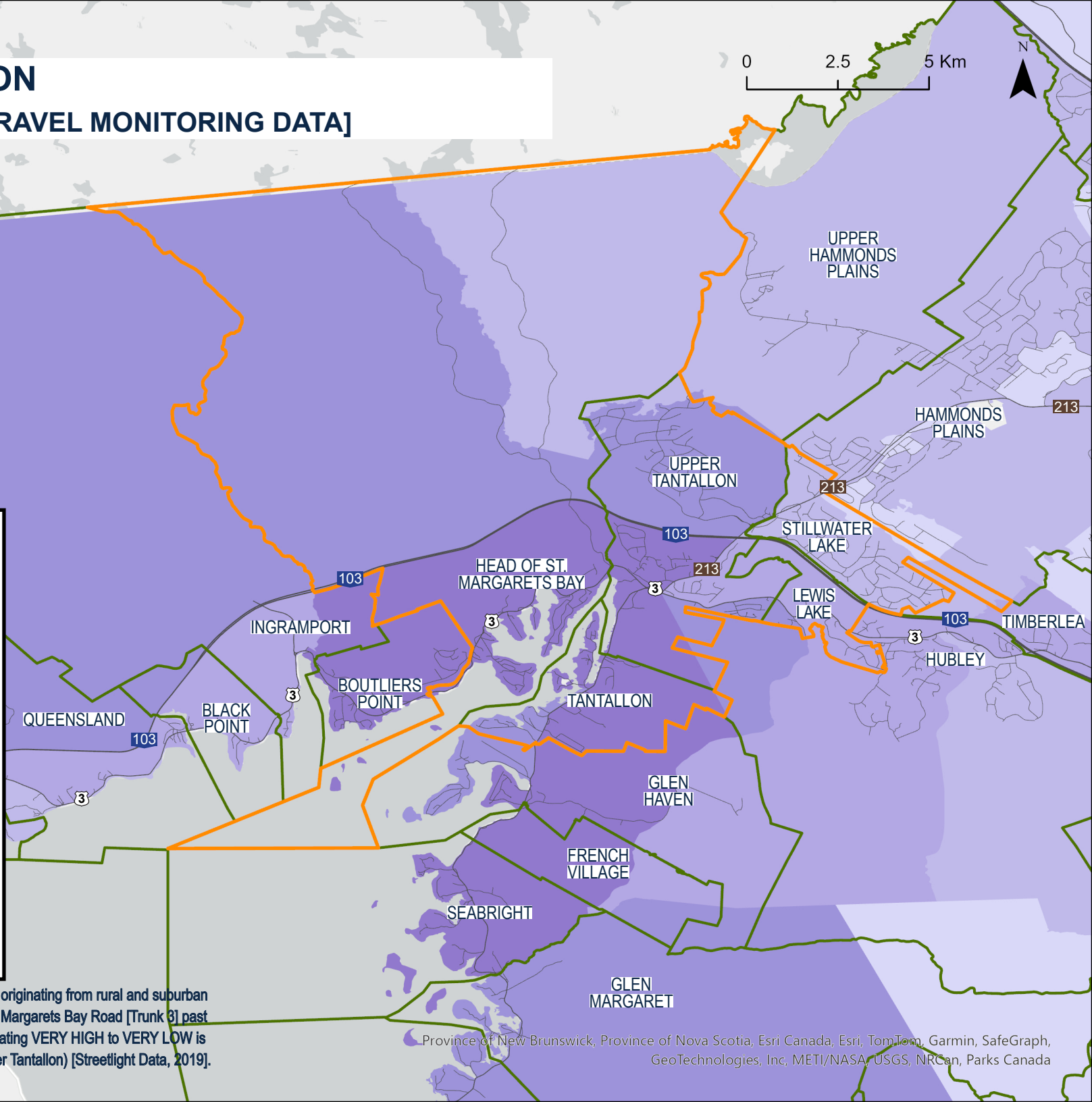


 PRELIMINARY AREA RATE BOUNDARY

 COMMUNITY BOUNDARIES

Average Daily Motor Vehicle Trips Travelling Through Upper Tantallon*

	VERY HIGH
	HIGH
	MEDIUM
	LOW
	VERY LOW
	NONE



*Average number of trips per day, by motor vehicle, originating from rural and suburban dissemination areas where the trip travels along St. Margarets Bay Road [Trunk 3] past 5210 St. Margarets Bay Road in Upper Tantallon (Rating VERY HIGH to VERY LOW is relative to natural breaks in the data output for Upper Tantallon) [Streetlight Data, 2019].