



Eastern Shore Lifestyle Centre

What we heard from public consultation
conducted in spring 2024

HALIFAX

EXECUTIVE SUMMARY

Community facilities play a key role in fostering the growth of healthy and vibrant communities and a strong local economy. As such, Halifax Regional Council has approved funding for the development of a new community facility on the Eastern Shore. The 21,000-square-foot Eastern Shore Lifestyle Centre will feature:

- a community hall and kitchen;
- a Halifax Public Libraries space;
- a fitness centre; and
- Halifax Regional Fire & Emergency Station 28.

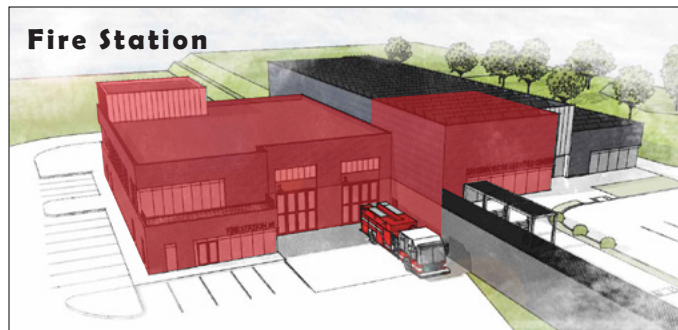
The site of the new build will be at 22835 Highway #7 in Sheet Harbour, the current home of Halifax Regional Fire & Emergency Station 28. The existing fire station will remain operational until the replacement station is completed; after which, the existing fire station will be demolished, enabling the construction of the Eastern Shore Lifestyle Centre facility.



The facility will be designed to meet Rick Hansen Foundation Accessibility Certification™ (RHFAC) Gold as well as Canada Green Building Council's Zero Carbon Design Standard.

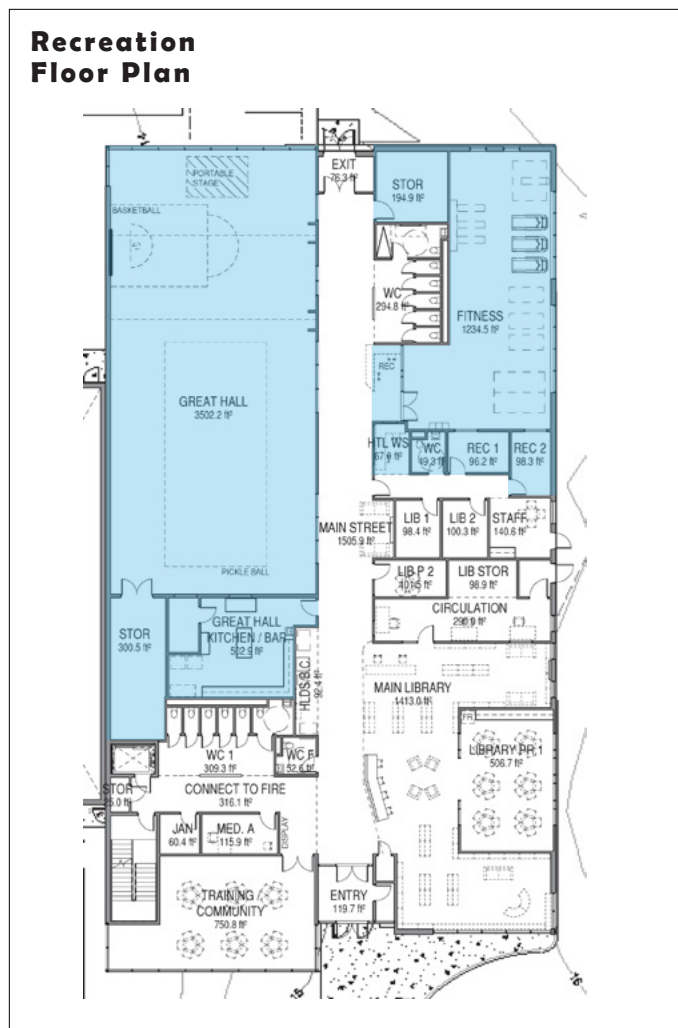
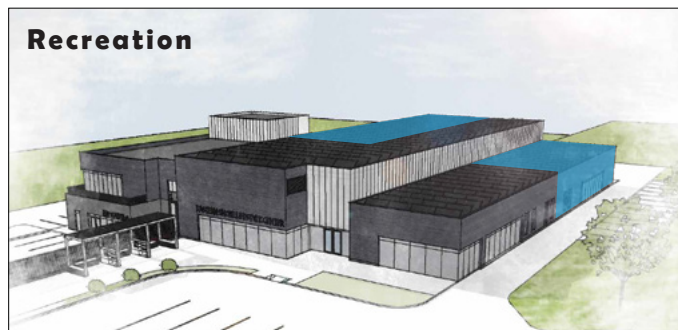
1. HRFE Fire Station 28

- An interior link between the fire station and the community centre is needed.
 - The design was changed to accommodate this requirement.



2. Recreation

- Questions about the Fitness Centre and Recreation Programming
 - The operating model/design of the fitness centre and the recreation programming will be conducted at a later stage in the project and announced prior to opening (2027).
- Multiple pickleball courts are needed
 - The original requirements included pickleball in the facility but not multiple courts.
 - Site and budget constraints will allow for one indoor pickleball court. In the next design stages, flooring options suitable for multipurpose use will be evaluated.
 - We recommend continuing to engage with HRM Parks & Recreation, Sport and Scheduling (halifax.ca) for rental availability at Marine Drive Academy's gymnasium. This aligns with the recommendations outlined in the Rural Recreation Strategy.
- The Great Hall, kitchen and bar area and access
 - The total approved square footage for great hall/kitchen/bar is based on the approved Regional Council motion.
 - The design has been modified for a separate entrance through the front of the facility.
- Better utilization of Outdoor Spaces
 - This will be reviewed in the design development phase.
- Hwy 7 needs a crosswalk to help get to the community centre entrance
 - This is outside the scope of this project, as this is governed by the Province of Nova Scotia Department of Highways, a community lead application can be made.

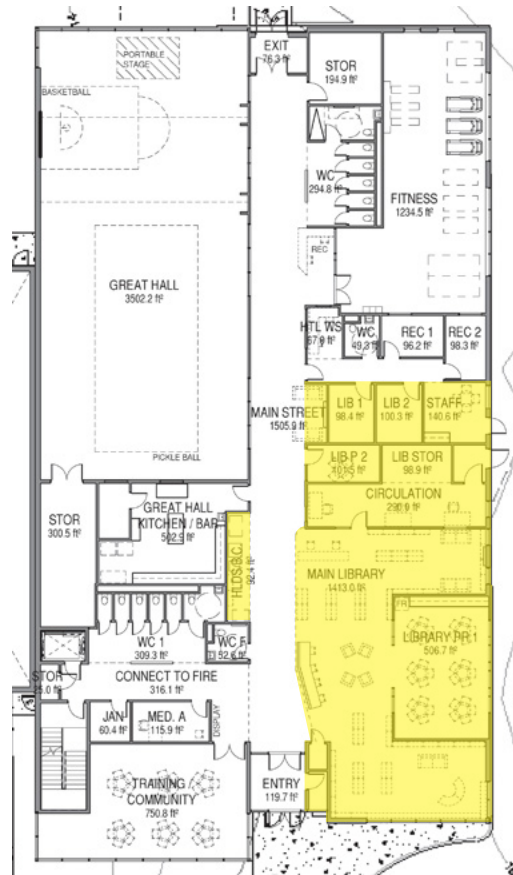


3. Library

- Public Art areas
 - There will be a separate planning phase for public art installation for the facility.
- Library Programming, including coffee station and children's areas
 - The programming will be determined at a later stage in the project and announced prior to opening (2027).
- Outdoor library
 - An outdoor Library area will be part of the design development phase.



Library Floor Plan



WHAT WE HEARD FROM COMMUNITY GROUPS

1. Sheet Harbour Area Pickleball Enthusiasts (SHAPE) Club

- There is a community desire for more outdoor pickleball space
 - Outdoor pickle ball courts are out of scope for this project; however, Parks & Recreation are taking this into future consideration.

2. Lion's Club

- Meeting and storage needs
 - The facility will be designed to be a friendly and flexible facility with multi-purpose spaces and storage areas. There will be available rental space to accommodate meetings from 5 to 35 people.
- Trophy case along Main Street of the facility
 - Millwork within the facility will be part of the design development phase.

3. Chamber of Commerce

- Dedicated office space/limited storage space
 - This is out of scope for this project. This was not part of the Regional Council approved square footage for the facility.

SUMMARY OF GENERAL FEEDBACK

- Parking is crucial for community centre to function; large events in the great hall could have two hundred and fifty (250) people.
 - Acquisition of land for the purpose of providing overflow parking is presently out of scope of the project. However, staff are currently considering options.
- Will there be another public meeting?
 - Yes, another public engagement sessions will be scheduled in the fall of 2024.
- Level 2 car charging stations
 - Level 2 vehicle charging stations are included in the project scope for staff use and additional public use stations will be considered for this property and regionally in alignment with the transformational goals of the [HalifACT Climate Action Plan](#).
- Facility to include solar panels
 - A rooftop solar system is included in the project scope in alignment with emissions reductions goals of the [HalifACT Climate Action Plan](#).
- More room for programming overall
 - The program size was tailored to accommodate the region's population and demographics - in alignment with [HRM's Rural Recreation Strategy](#)

This feedback and engagement period helped to illustrate what the public valued most about the function of the facility. The topics of concern and feedback helped prioritize design elements which could be implemented within the available project funding and within the constraints of the project site. Feedback received which can not be implemented within the approved program will inform future year's planning and budgeting.

NEXT STEPS

Staff continue to review feedback in preparing the design development phase, with an intent to review the design development package with the public again in the fall of 2024.

Construction is expected to begin in spring/summer 2025 and the facility is expected to be completed in spring 2027.

ACKNOWLEDGEMENTS

Thank you to all who took time to attend the concept design engagement session, members of the community who wrote to us to send their feedback, the project team and Eastern Shore Lifestyle Centre Committee who supported the project's design stages to date and assisted in organizing the event. Lastly, thank you to those who took the time to prepare and read this report.

Visit halifax.ca/ESLC to learn more.

