

PO Box 1749, Halifax, Nova Scotia B3J 3A5

Halifax: Tel: 902-490-5650, Fax: 902-490-4645  
Dartmouth: Tel: 902-490-4490, Fax: 902-490-4661

<b>Courier and Deliveries:</b> Halifax: 7071 Bayers Rd, Suite 2005, Halifax, NS Dartmouth: 40 Alderney Drive, 2nd Floor, Dartmouth, NS
--

## Subdivision Transmittal Form

To: WATERSHED ADVISORY COMMITTEE

Application Date: 17-January-2017  
Date Sent: 06-February-2017

Re: HRM File # 20999 FINAL SUBDIVISION APPLICATION  
Lot # H-R  
PID # 41357237 MONTAGUE RD, MONTAGUE GOLD MINES  
Additional PID #  
Legal Subdivision Name VB4R HOLDINGS LTD  
Common Subdivision Name VBR HOLDINGS LTD  
Phase #  
Lots Requested LOTS 104 - 112  
Property Owner(s) VBR HOLDINGS LIMITED  
Primary Applicant Name VBR HOLDINGS LIMITED  
Address 72 OVERBROOK DR, WAVERLEY, NS B2R 1C4  
Phone (902)861-4531 x

### Application Comments

Sanitary Service N Water Service N  
Existing Land Use VACANT - VACANT  
Proposed Land Use RES: SINGLE UNIT DWELLING

The above referenced Subdivision Application is being referred to you for your review and comment on the following aspects of the application:

The attached survey plan and transmittal form has been forwarded to you for information purposes only. If you have any questions or comment pertaining to this subdivision application, please forward to or contact me at (902) 490-7455 or by email: [macdoude@halifax.ca](mailto:macdoude@halifax.ca)

Please return all comments to the undersigned, at the above HRM Planning and Development office.

Thank you,

DEAN MACDOUGALL  
PLANNER I  
Phone:  
Email:

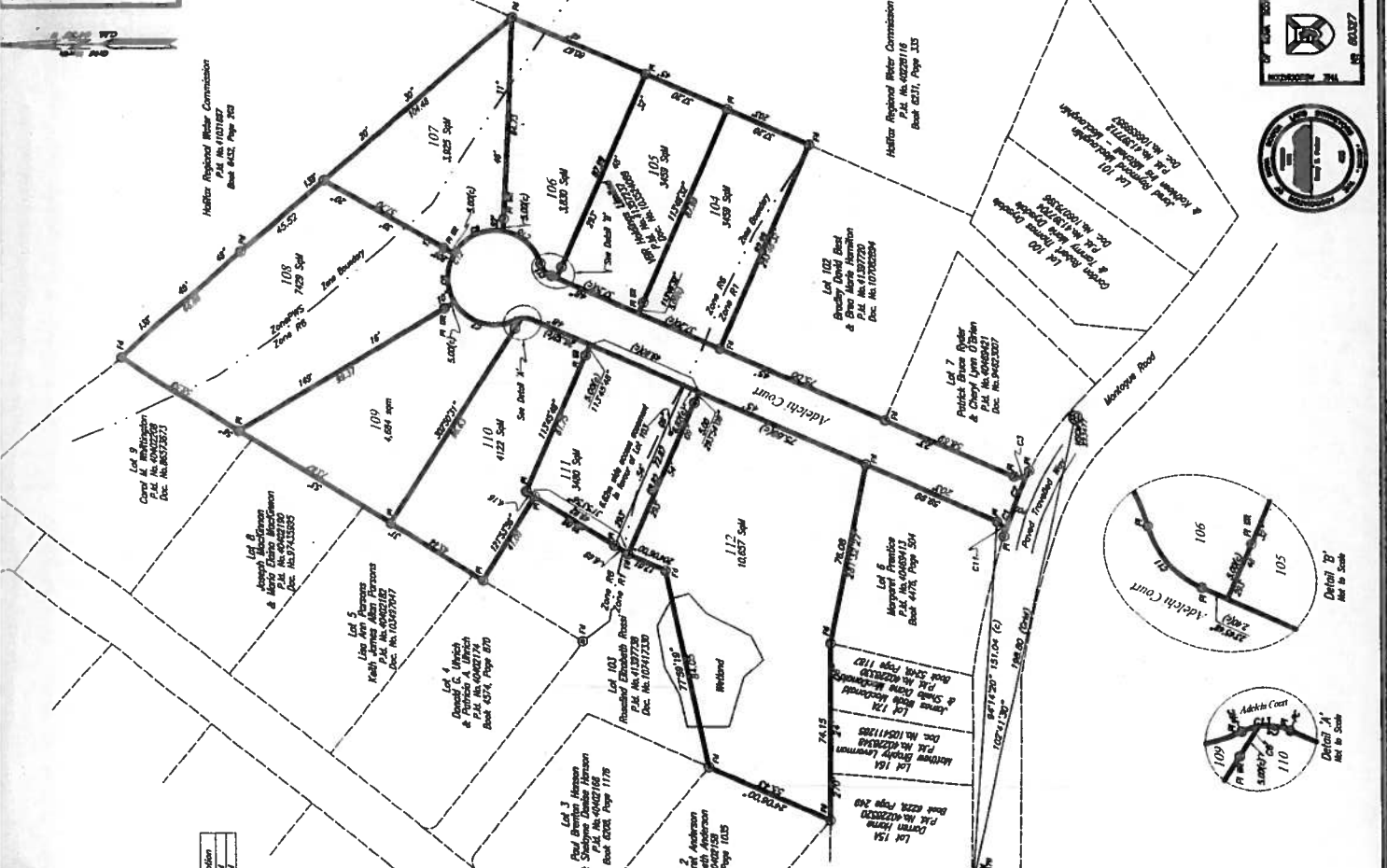


Scale: 1:50,000

KEY PLAN

Point	North	East	Description
C1	2577.78	4541.51	NSC1
C2	2577.78	4541.51	NSC2
C3	2577.78	4541.51	NSC3
C4	2577.78	4541.51	NSC4
C5	2577.78	4541.51	NSC5
C6	2577.78	4541.51	NSC6
C7	2577.78	4541.51	NSC7
C8	2577.78	4541.51	NSC8
C9	2577.78	4541.51	NSC9
C10	2577.78	4541.51	NSC10
C11	2577.78	4541.51	NSC11
C12	2577.78	4541.51	NSC12
C13	2577.78	4541.51	NSC13

NTR AT577 NSCM Coordinates Table



Notes:

- (1) This plan was made and dated the 12th day of June 12, 2012 by the Surveyor.
- (2) Reference is made to the survey of the land shown on the plan of the Surveyor's Office, dated the 12th day of June 12, 2012, and to the plan of the Surveyor's Office, dated the 12th day of June 12, 2012, and to the plan of the Surveyor's Office, dated the 12th day of June 12, 2012.
- (3) The Surveyor's Office is not responsible for the accuracy of the plan of the Surveyor's Office, dated the 12th day of June 12, 2012, and to the plan of the Surveyor's Office, dated the 12th day of June 12, 2012, and to the plan of the Surveyor's Office, dated the 12th day of June 12, 2012.
- (4) The Surveyor's Office is not responsible for the accuracy of the plan of the Surveyor's Office, dated the 12th day of June 12, 2012, and to the plan of the Surveyor's Office, dated the 12th day of June 12, 2012, and to the plan of the Surveyor's Office, dated the 12th day of June 12, 2012.

Plan Reference:

- (1) The plan of the Surveyor's Office, dated the 12th day of June 12, 2012, and to the plan of the Surveyor's Office, dated the 12th day of June 12, 2012, and to the plan of the Surveyor's Office, dated the 12th day of June 12, 2012.
- (2) The plan of the Surveyor's Office, dated the 12th day of June 12, 2012, and to the plan of the Surveyor's Office, dated the 12th day of June 12, 2012, and to the plan of the Surveyor's Office, dated the 12th day of June 12, 2012.
- (3) The plan of the Surveyor's Office, dated the 12th day of June 12, 2012, and to the plan of the Surveyor's Office, dated the 12th day of June 12, 2012, and to the plan of the Surveyor's Office, dated the 12th day of June 12, 2012.
- (4) The plan of the Surveyor's Office, dated the 12th day of June 12, 2012, and to the plan of the Surveyor's Office, dated the 12th day of June 12, 2012, and to the plan of the Surveyor's Office, dated the 12th day of June 12, 2012.

Surveyor's Certificate

I, [Name], being duly sworn, do hereby certify that the above is a true and correct copy of the original plan of the Surveyor's Office, dated the 12th day of June 12, 2012, and to the plan of the Surveyor's Office, dated the 12th day of June 12, 2012, and to the plan of the Surveyor's Office, dated the 12th day of June 12, 2012.

Dated this 12th day of June 12, 2012.

[Signature]

Longstaff - Parker Surveys  
 Plan of Survey  
 Showing  
 Lots 104 to 112 inclusive  
 and  
 Adelchi Court  
 Subdivision of Block H-R  
 Lands of  
 VBR Holdings Limited  
 at  
 Barnhope Drive and Montague Road,  
 Dartmouth, Halifax County, Nova Scotia.

Scale: 1:1000  
 Dwg. No. 2016-023

