

Bedford-Sackville Greenway Corridor

Halifax Active Transportation Standing Committee

November 21, 2019



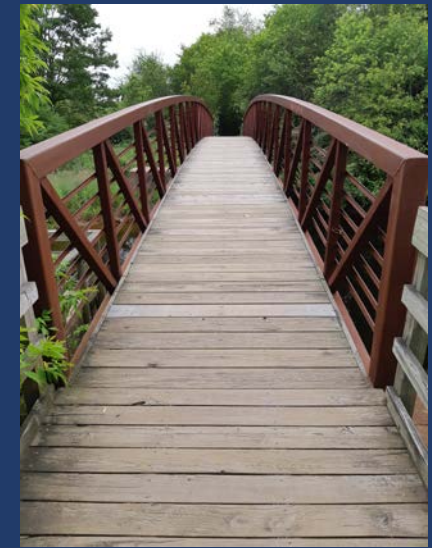
Existing Facility Overview

Existing gravel trail includes Bedford-Sackville Connector Greenway and Fort Sackville Walkway



Project Scope

- Phase 1
 - Complete audit of existing greenway facilities
 - Identify improvements to existing Fort Sackville Walkway and Bedford Sackville Connector Greenway
 - Conduct Round 1 of Public Engagement
- Phase 2
 - Identify extension options for each end of the greenway
 - Conduct Round 2 of Public Engagement
 - Evaluate extension options
 - Prepare 30% design for recommended options



Overview of Phase 1 Audit Results

Provided the following recommendations:

- Maintain existing trail alignment



**Note that audit did not include structural assessments, or review of existing trail amenities and signage*



Overview of Phase 1 Audit Results

Provided the following recommendations:

- Maintain existing trail alignment
- Keep trail within flood plain



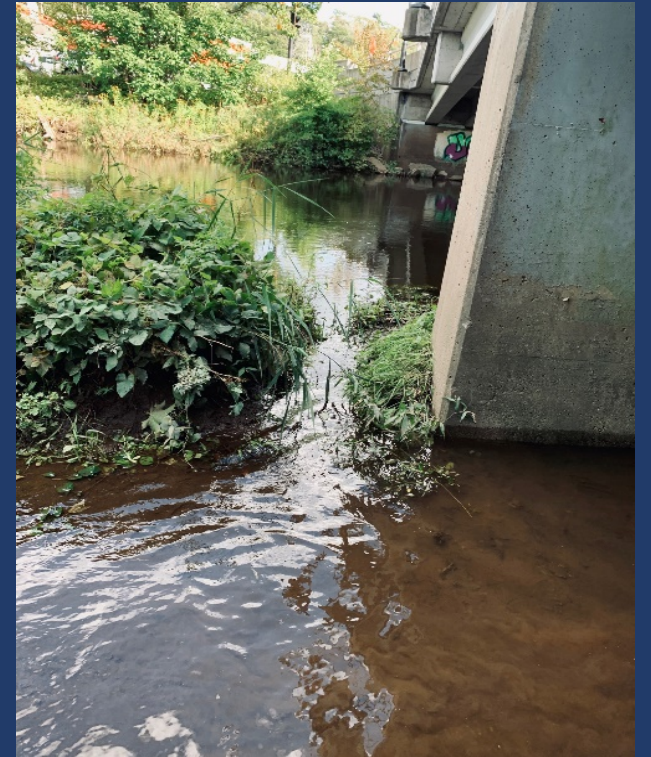
**Note that audit did not include structural assessments, or review of existing trail amenities and signage*



Overview of Phase 1 Audit Results

Provided the following recommendations:

- Maintain existing trail alignment
- Keep trail within flood plain
- Improve drainage at localized areas



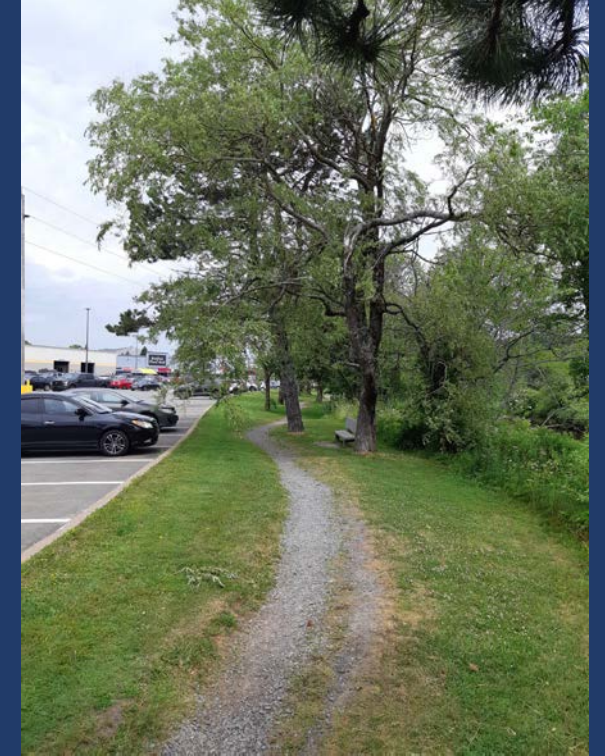
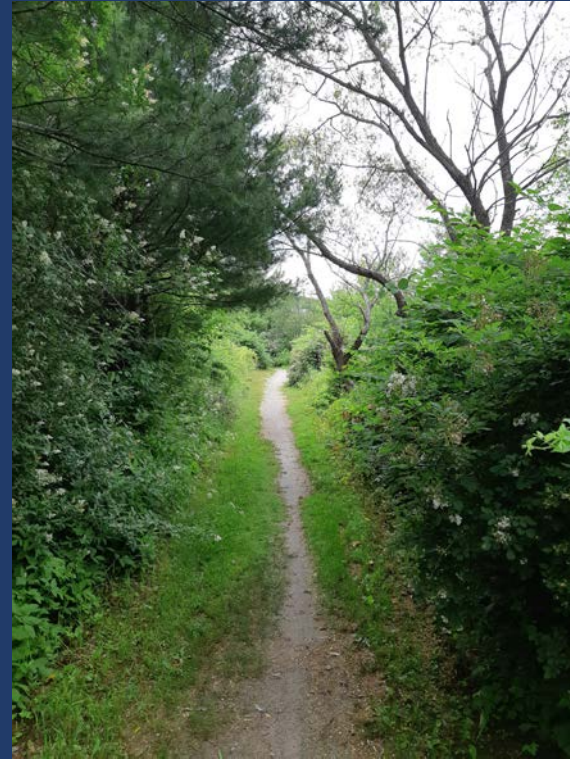
**Note that audit did not include structural assessments, or review of existing trail amenities and signage*



Overview of Phase 1 Audit Results

Provided the following recommendations:

- Maintain existing trail alignment
- Keep trail within flood plain
- Improve drainage at localized areas
- Widen full trail to 3.0 m



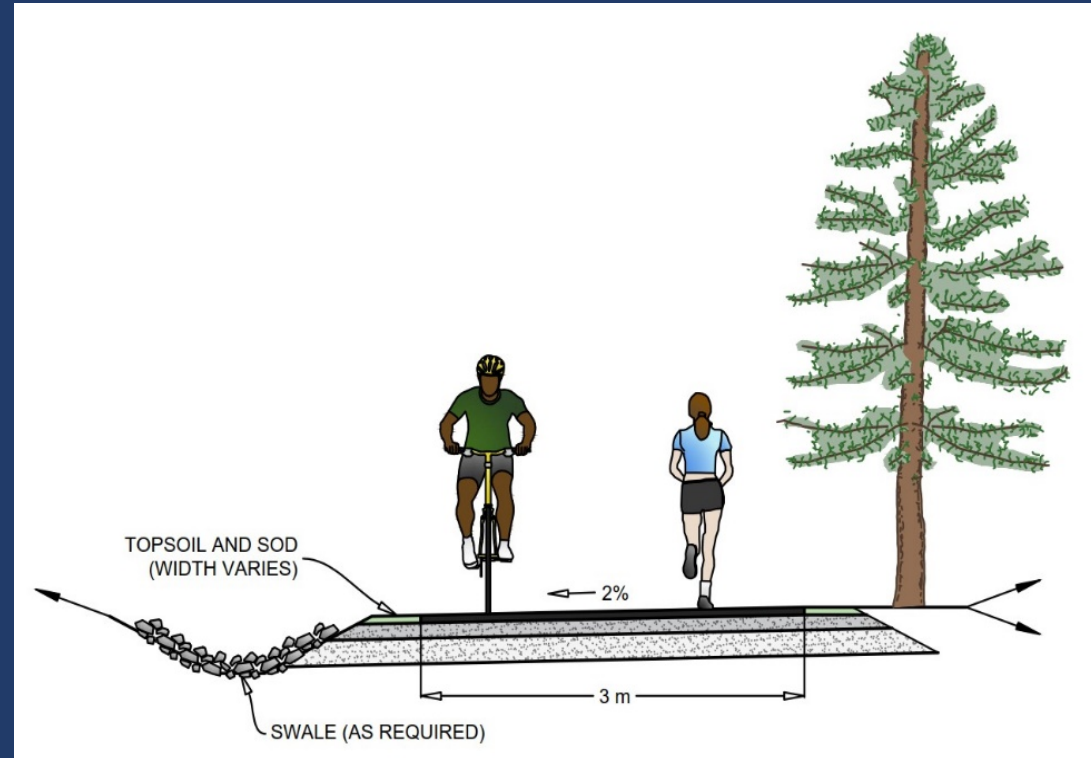
**Note that audit did not include structural assessments, or review of existing trail amenities and signage*



Overview of Phase 1 Audit Results

Provided the following recommendations:

- Maintain existing trail alignment
- Keep trail within flood plain
- Improve drainage at localized areas
- Widen full trail to 3.0 m
- Pave trail surface to improve resiliency following flood events



**Note that audit did not include structural assessments, or review of existing trail amenities and signage*



Overview of Phase 1 Audit Results

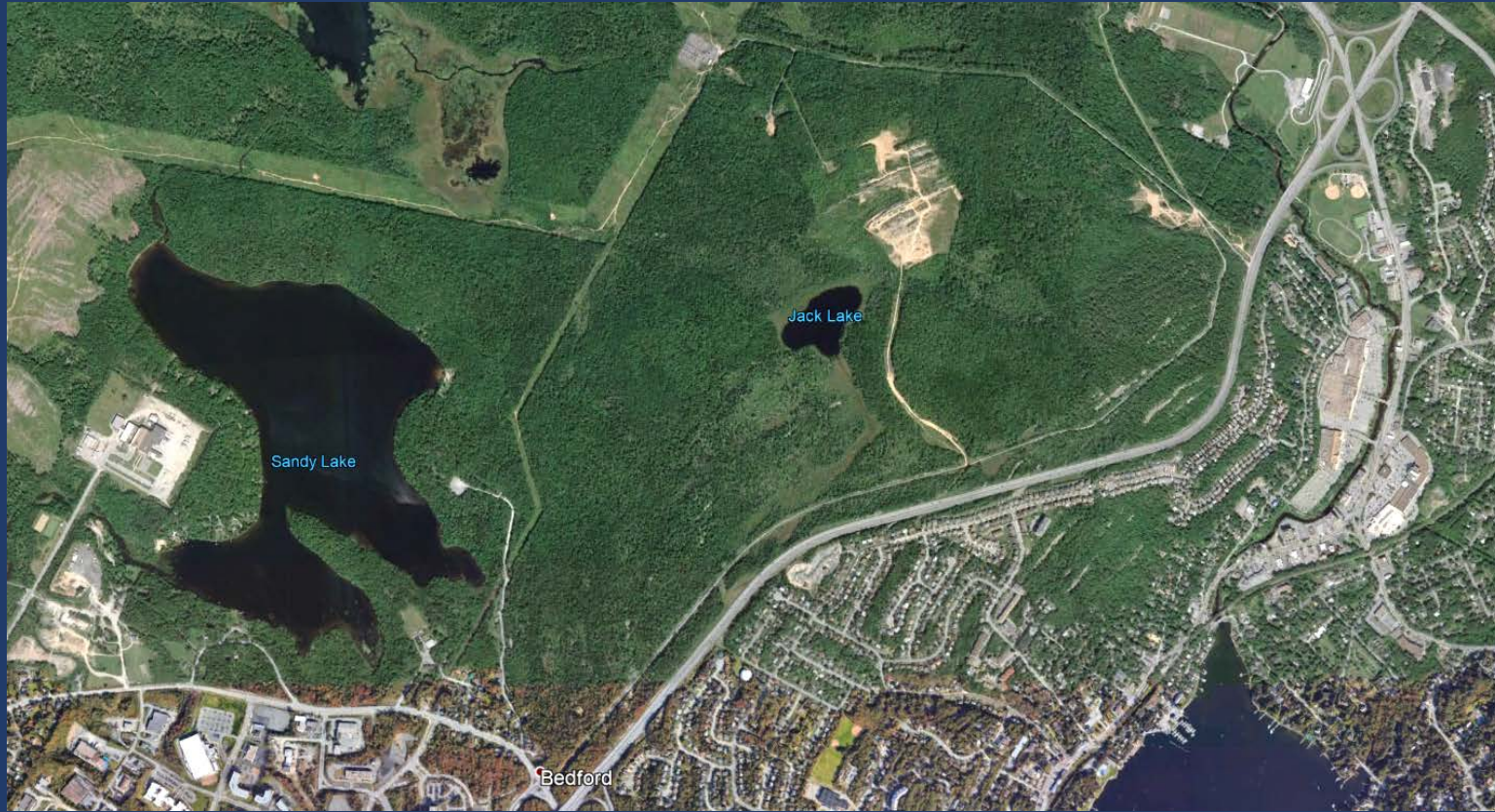
Provided the following recommendations:

- Maintain existing trail alignment
- Keep trail within flood plain
- Improve drainage at localized areas
- Widen full trail to 3.0 m
- Pave trail surface to improve resiliency following flood events
- Improve crossings at Superstore, Bedford Place Mall, and River Lane

**Note that audit did not include structural assessments, or review of existing trail amenities and signage*



Sandy Lake Connection



Sandy Lake Connection



Results of Round 1 Engagement

2 Pop-Up Sessions

41

Participants
Engaged

Open House

24

Participants
Engaged

Online Survey

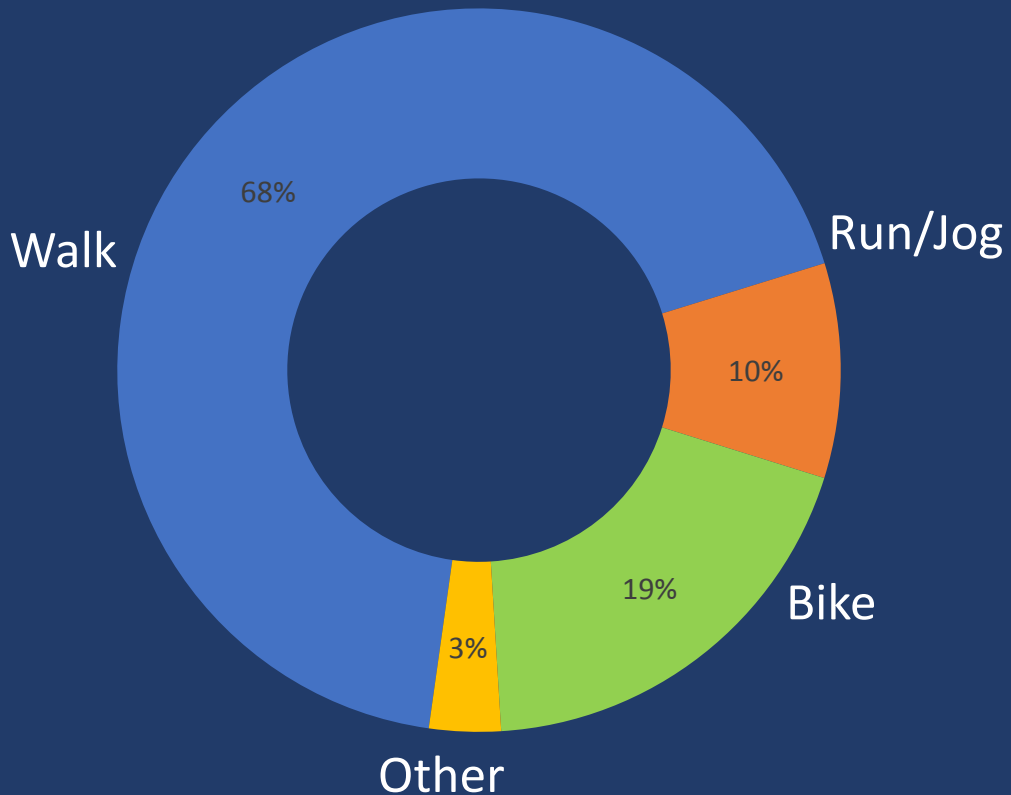
282

Participants
Engaged

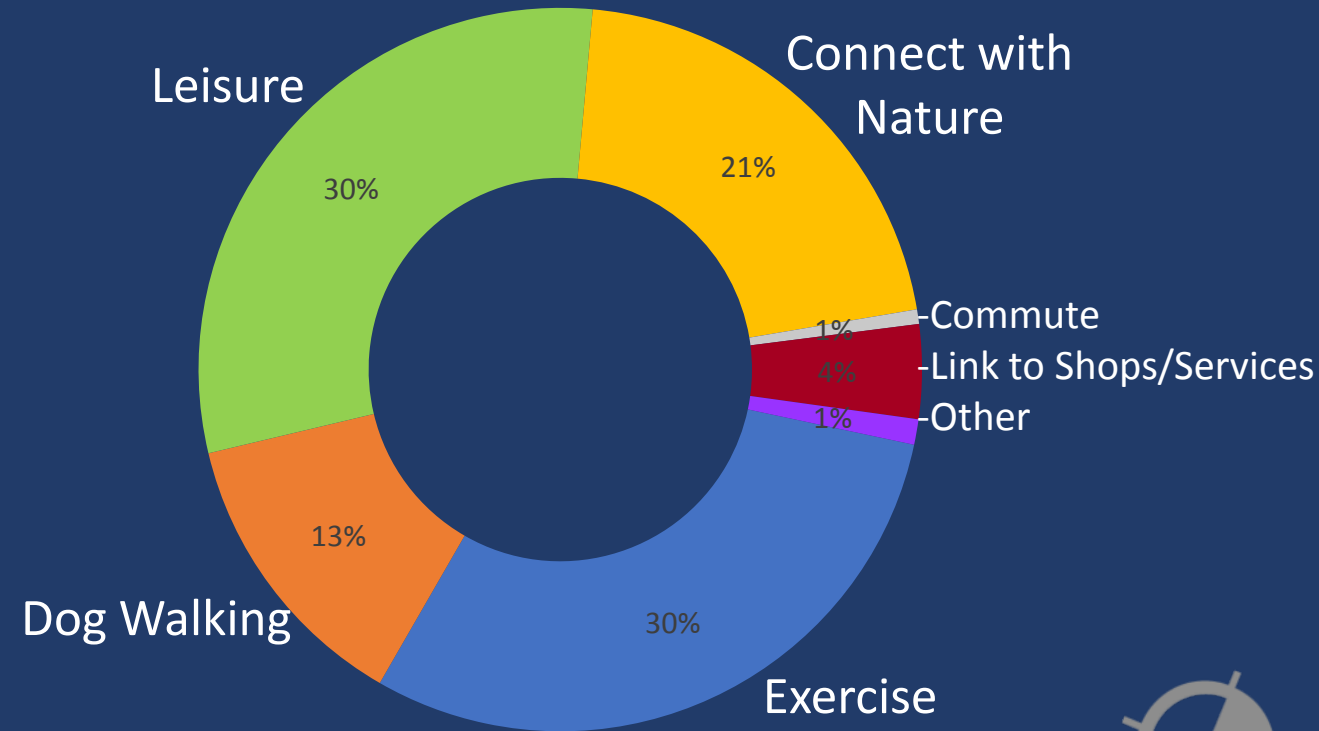


Results of Round 1 Engagement

Mode of Travel

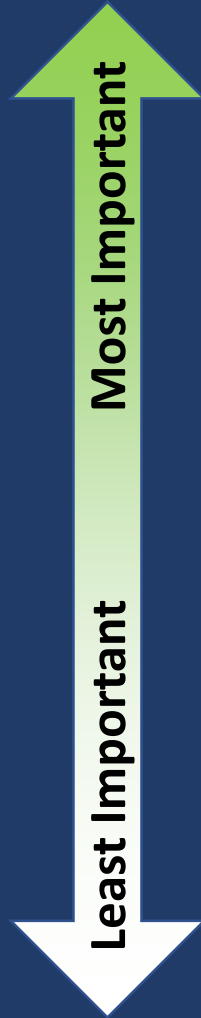


Purpose of Use



Results of Round 1 Engagement

*Weighted Ranking
of Priorities for
Greenway
Extensions*



#1 Proximity to river/nature

#2 Direct access to destinations

#3 Distance from roadway & vehicular traffic

#4 Ability to use facility during all seasons

#5 Fewer instances of facility closure due to flooding

#6 Cost effectiveness



Phase 2 - Extension Options

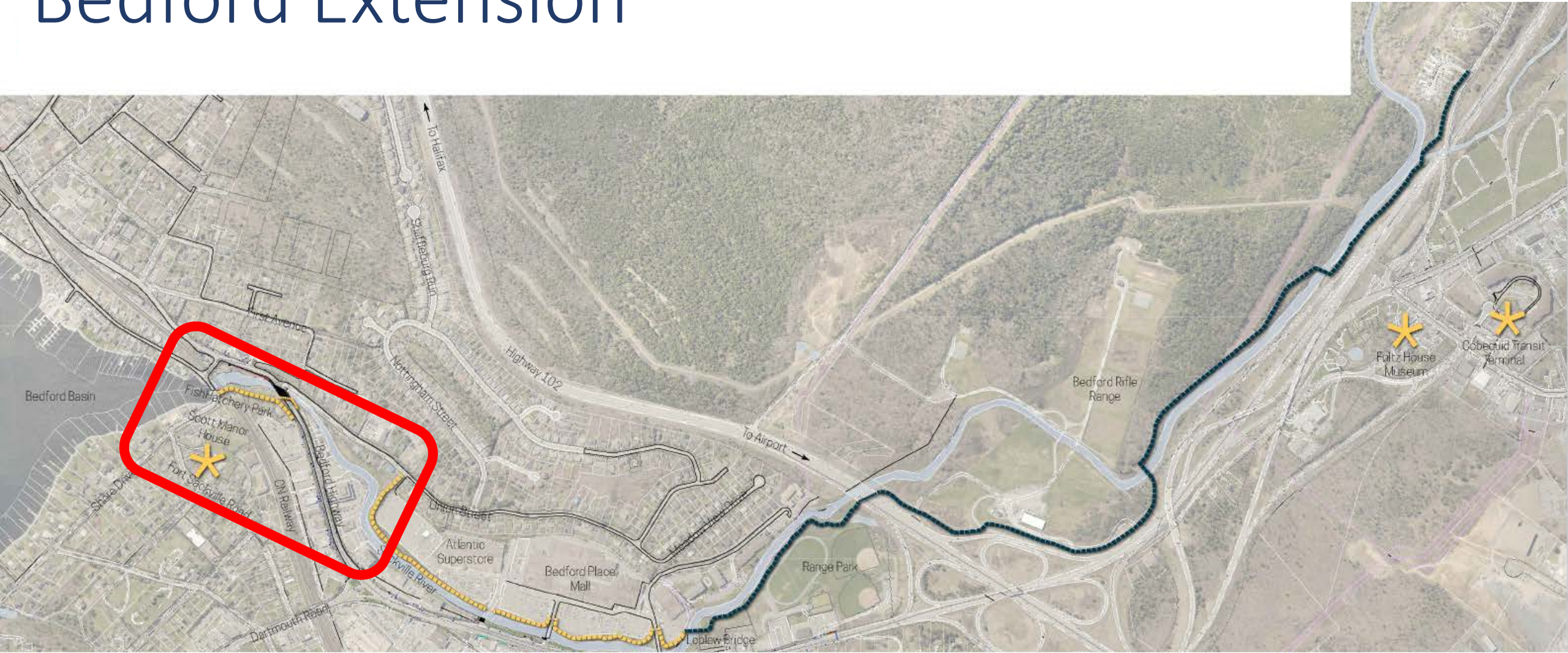


Extension Options

Linking the existing greenway further into the communities of Bedford & Sackville



Bedford Extension



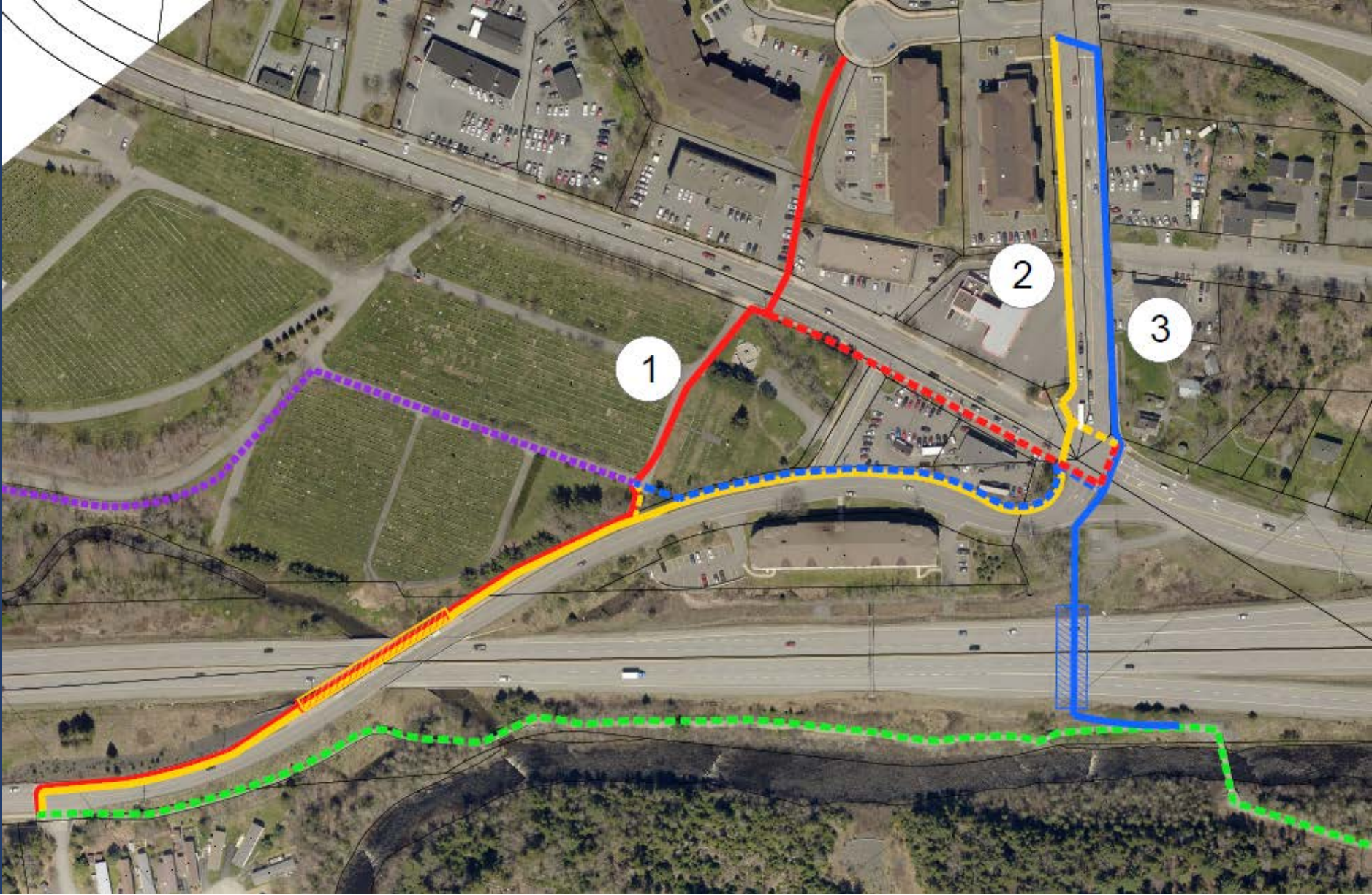
Greenway Extension - Bedford



Sackville Extension



Greenway Extension - Sackville



Round 2 Engagement

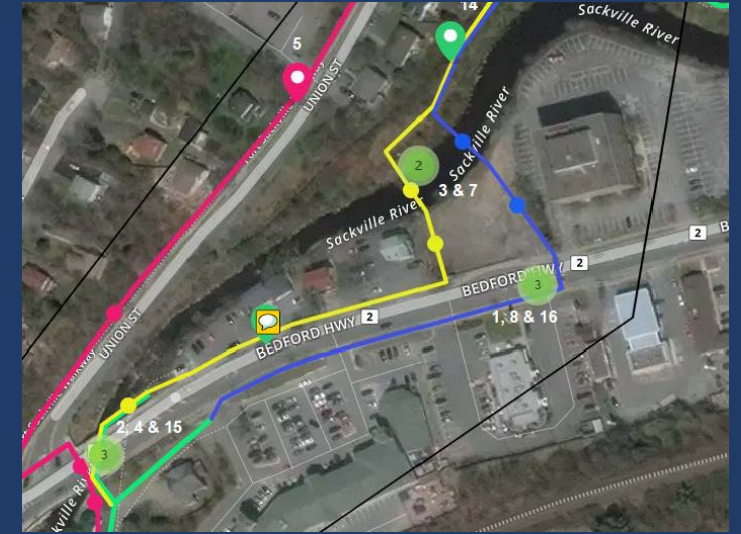
2 Pop-Up Sessions



Open House



Online Engagement



Round 2 Engagement – Bedford Extension

Bedford Extension

- Clear preference for option A2

No road crossing

Nicer experience.
More time along river.

Avoid busy driveways



Round 2 Engagement – Sackville Extension

Sackville Extension

- Groups were very divided on the preferred option

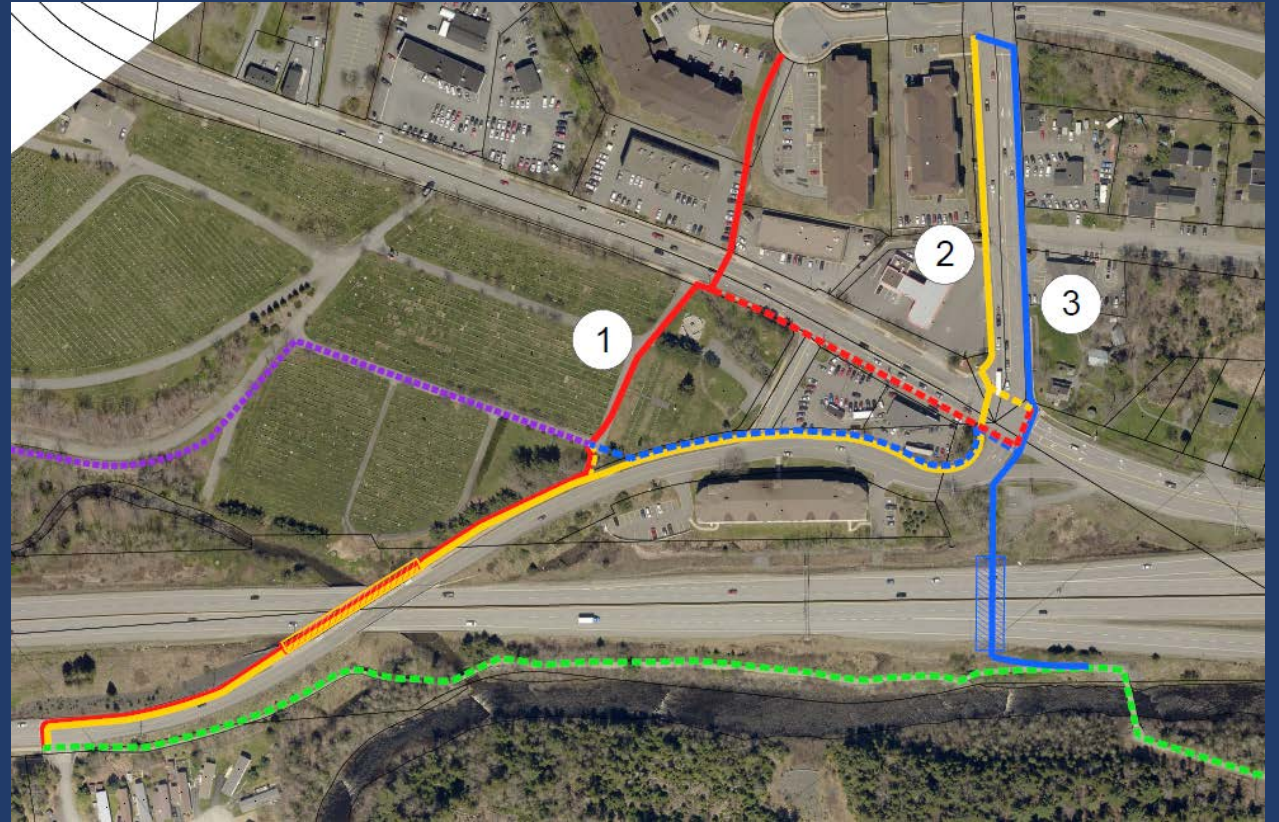
Safety concerns at midblock crossing

Want direct connection to parking at Fultz House

Safety concerns at intersection & driveway

Concern about cost of overpasses

Minimize length along the road



Evaluation Criteria

User Experience

- Proximity to Nature
- Level of Comfort for users
- Aesthetics

Connectivity & Access

- Connections to Parking
- Links to Key Destinations
- Overall Network Connectivity

Feasibility

- Private Property Crossings
- Constructability
- Operation and Maintenance

Environmental

- Ecological Impacts
- Flooding

Safety

- Vehicular Conflicts
- Security

Accessibility

- Route accessibility

Traffic

- Impacts on Vehicular Operations



Next Steps

- Report on Evaluation of Extension Routes & Recommended Options
- 30% Design for Selected Extension Options
- Final Report

