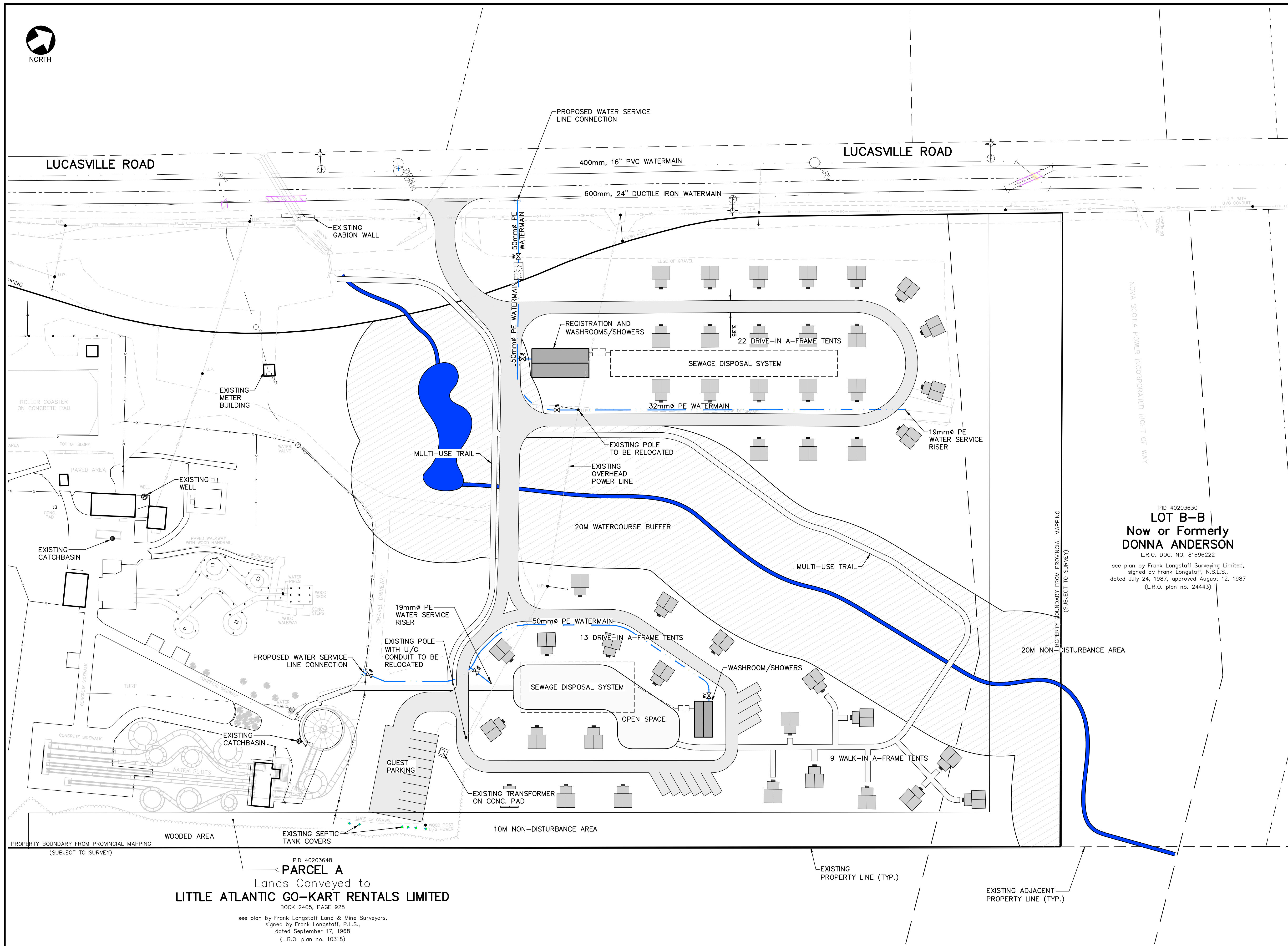




NORTH



- NOTES:**
1. FIELD SURVEYS WERE CARRIED OUT DURING THE PERIOD JANUARY 16, 2018 TO FEBRUARY 12, 2018 AND ON SEPTEMBER 24, 2019.
 2. ELEVATIONS ARE GEODETIC, DERIVED FROM NOVA SCOTIA ACTIVE CONTROL STATION NO. 250036, HAVING A PUBLISHED ELEVATION OF 138.692 METRES.
 3. ELEVATIONS ARE SHOWN IN METRES AND DECIMALS THEREOF.
 4. CONTOUR INTERVAL = 0.5 METRE.
 5. CONTOURS SHOWN HEREON WERE CREATED USING A COMBINATION OF CONVENTIONAL TOTAL STATION FIELD COLLECTED DATA AND LIDAR DATA.
 6. THIS SURVEY IS REFERENCED TO NOVA SCOTIA ACTIVE CONTROL STATION NO. 250036
 N 4,946,701.465 (m) NAD83 CSRS (EPOCH 2010)
 E 25,566,217.098 (m) NAD83 CSRS (EPOCH 2010)
 EL. 138.692 (m) GEODETIC (CGVD2013)
 7. PROPERTY BOUNDARIES SHOWN HEREON ARE FROM PROVINCIAL PROPERTY MAPPING AND ARE SUBJECT TO SURVEY.
 8. UTILITIES SHOWN ON LUCASVILLE ROAD ARE FROM IMAGE SUPPLIED BY HALIFAX WATER AND ARE APPROXIMATE ONLY.

LEGEND:

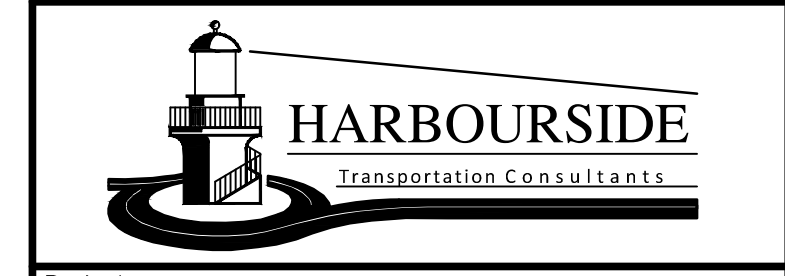
LANDS DEALT WITH BY THIS PLAN
LAND REGISTRATION OFFICE L.R.O.
PROPERTY IDENTIFICATION NUMBER PID
LIGHT STANDARD L.S.
GUARD POST G.P.
UTILITY POLE U.P.
GUY WIRE G.W.
HARDWOOD TREE 100%HW
SOFTWOOD TREE 100%SW
SIGN S
FENCE F
OVERHEAD WIRES O.W.
SPOT ELEVATION x 110.73

PID 40203630
LOT B-B
 Now or Formerly
DONNA ANDERSON
 L.R.O. DOC. NO. 81696222
 see plan by Frank Longstaff Surveying Limited,
 signed by Frank Longstaff, N.S.L.S.,
 dated July 24, 1987, approved August 12, 1987
 (L.R.O. plan no. 24443)

No.	DESCRIPTION	Date (mm/dd/yy)	By
C	RE-ISSUED FOR CLIENT REVIEW	11/23/23	MM
B	RE-ISSUED FOR CLIENT REVIEW	11/02/23	MM
A	ISSUED FOR CLIENT REVIEW	10/17/23	MM

ISSUE or REVISION

Client
BSMAART DEVELOPMENTS AND CONSTRUCTIONS INC.



Project
PROPOSED CAMPGROUND ATLANTIC SPLASH ADVENTURE
 LUCASVILLE ROAD,
 COUNTY OF HALIFAX, NS

Title
SITE SERVICING PLAN

Scale	Date	Drawn	Designed
	OCT 13, 2023	CB	CB
		Checked MM	Approved MM
		Contract No.	232078
		Drawing No.	CSK-01

PID 40203648
PARCEL A
 Lands Conveyed to
LITTLE ATLANTIC GO-KART RENTALS LIMITED
 BOOK 2405, PAGE 928
 see plan by Frank Longstaff Land & Mine Surveyors,
 signed by Frank Longstaff, P.L.S.,
 dated September 17, 1968
 (L.R.O. plan no. 10318)