

© Passive Design Solutions

Designs and drawings are the exclusive copyright of PDS. The drawings cannot be reproduced, modified, reused, published, presented or shared in any part or whole without written consent from PDS. Purchase of a plan set from PDS, provides a non-exclusive right to build a single building. Building more than one building from this plan set is an infringement of the Copyright Act.



AFFORDABLE HOUSING
ASSOCIATION OF NOVA SCOTIA

ISSUE NO.	DESCRIPTION	DATE
-----------	-------------	------

Architect:	
------------	--

Client:
Affordable Housing
Association of Nova
Scotia

Project:
**AHANS Sackville Drive
Apartments**
PID 40423899

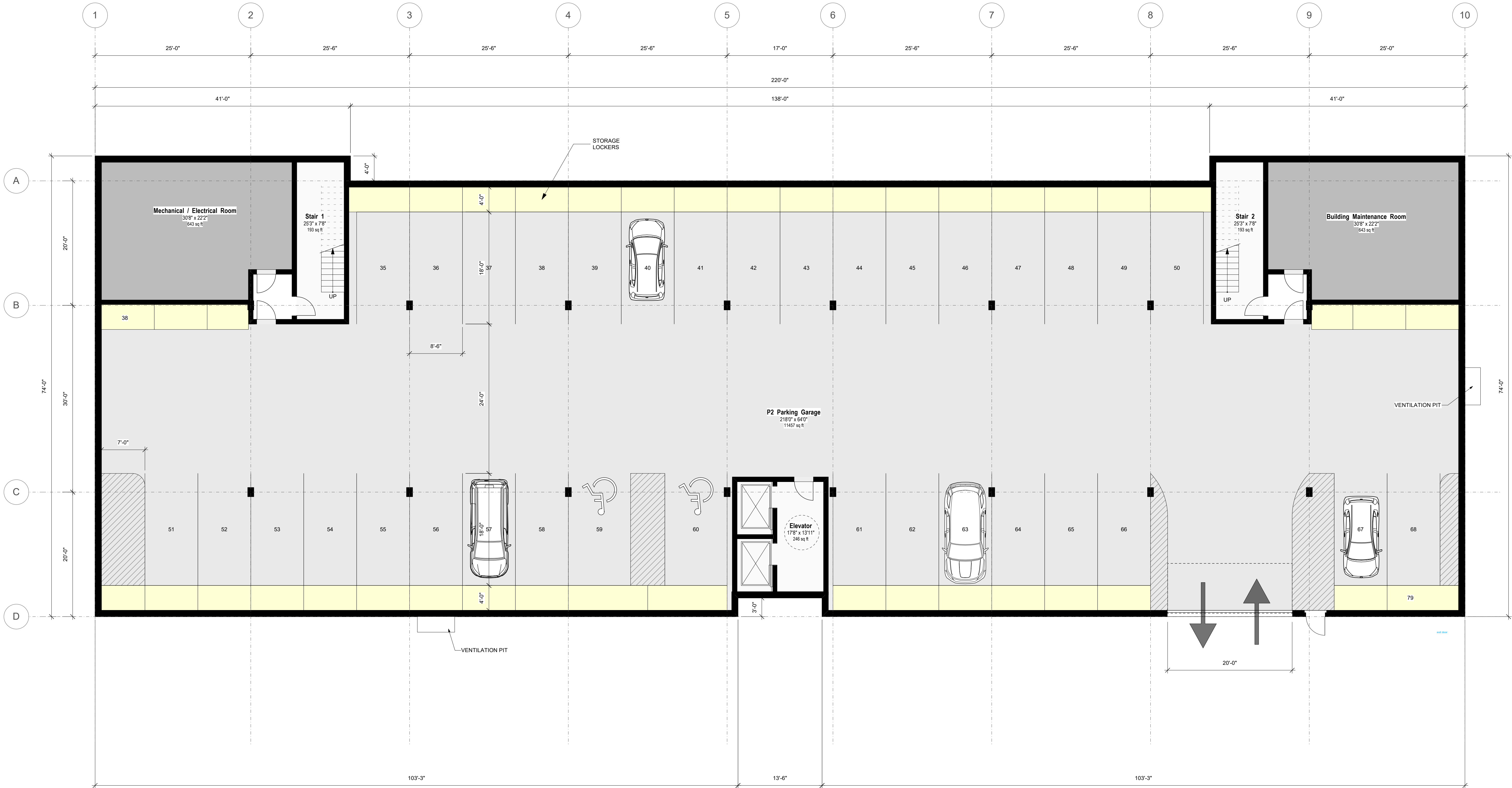
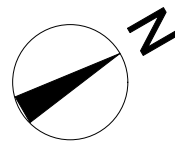
Issue:
**DRAFT DESIGN
DOCUMENTS**
Issued for Development Agreement

Date:
2025-05-08

Basement 2 Floor Plan

Drawn By: ZM,JP Checked By: NL

A110



1 BASEMENT 1 FLOOR PLAN
SCALE: 1/8" = 1'-0"

LEGEND

3-Bedroom Unit	Common Area	Utility
2-Bedroom Unit	Circulation	Storage Lockers
1-bedroom Unit	Management	
Studio Unit	Commercial	

© Passive Design Solutions

Designs and drawings are the exclusive copyright of PDS. The drawings cannot be reproduced, modified, reused, published, presented or shared in any part or whole without written consent from PDS. Purchase of a plan set from PDS, provides a non-exclusive right to build a single building. Building more than one building from this plan set is an infringement of the Copyright Act.



AFFORDABLE HOUSING
ASSOCIATION OF NOVA SCOTIA

ISSUE NO.	DESCRIPTION	DATE
-----------	-------------	------

Architect:	
------------	--

Client:
**Affordable Housing
Association of Nova
Scotia**

Project:
**AHANS Sackville Drive
Apartments**
PID 40423899

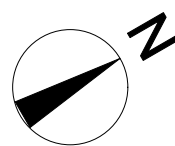
Issue:
**DRAFT DESIGN
DOCUMENTS**
Issued for Development Agreement

Date:
2025-05-08

Basement 1 Floor Plan

Drawn By: ZM,JP Checked By: NL

A111



1 BASEMENT 1 FLOOR PLAN
SCALE: 1/8" = 1'-0"

LEGEND

3-Bedroom Unit	Common Area	Utility
2-Bedroom Unit	Circulation	Storage Lockers
1-bedroom Unit	Management	
Studio Unit	Commercial	

© Passive Design Solutions

Designs and drawings are the exclusive copyright of PDS. The drawings cannot be reproduced, modified, reused, published, presented or shared in any part or whole without written consent from PDS. Purchase of a plan set from PDS, provides a non-exclusive right to build a single building. Building more than one building from this plan set is an infringement of the Copyright Act.



AFFORDABLE HOUSING
ASSOCIATION OF NOVA SCOTIA

ISSUE NO.	DESCRIPTION	DATE
-----------	-------------	------

Architect:	
------------	--

Client:
Affordable Housing
Association of Nova
Scotia

Project:
**AHANS Sackville Drive
Apartments**
PID 40423899

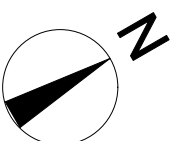
Issue:
**DRAFT DESIGN
DOCUMENTS**
Issued for Development Agreement

Date:
2025-05-08

Ground Floor Plan

Drawn By:	ZM,JP	Checked By:	NL
-----------	-------	-------------	----

A112



1 GROUND FLOOR PLAN

SCALE: 1/8" = 1'-0"

LEGEND

- | | | |
|----------------|-------------|-----------------|
| 3-Bedroom Unit | Common Area | Utility |
| 2-Bedroom Unit | Circulation | Storage Lockers |
| 1-bedroom Unit | Management | |
| Studio Unit | Commercial | |



Affordable Housing Association of Nova Scotia

ISSUE NO.	DESCRIPTION	DATE

Architect:

Client: Affordable Housing Association of Nova Scotia

Project: AHANS Sackville Drive Apartments
PID 40423899

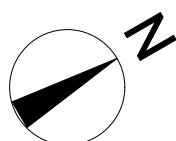
Issue: DRAFT DESIGN DOCUMENTS
Issued for Development Agreement

Date: 2025-05-08

Second Floor Plan

Drawn By: ZM,JP Checked By: NL

A113



2ND - 6TH FLOORS ARE SIMILAR

1 SECOND FLOOR PLAN
SCALE: 1/8" = 1'-0"

- LEGEND
- 3-Bedroom Unit
 - 2-Bedroom Unit
 - 1-bedroom Unit
 - Studio Unit
 - Common Area
 - Circulation
 - Management
 - Commercial
 - Utility
 - Storage Lockers



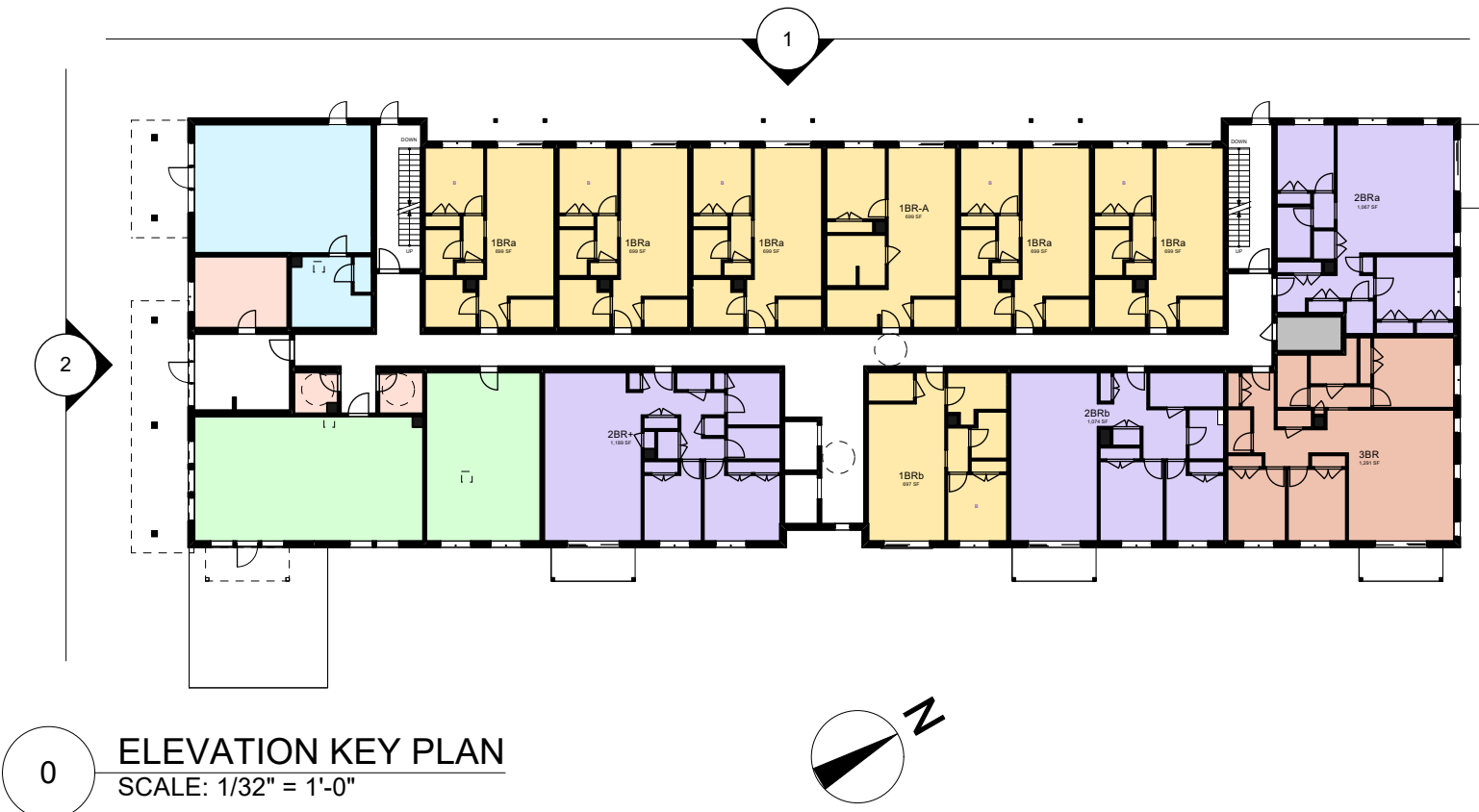
- T.O. ROOF
72'-8"
- SIXTH FLOOR
52'-6"
- FIFTH FLOOR
42'-0"
- FOURTH FLOOR
31'-6"
- THIRD FLOOR
21'-0"
- SECOND FLOOR
10'-6"
- FIRST FLOOR
0"
- BASEMENT 1 FLOOR
-10'-0"
- BASEMENT 2 FLOOR
-20'-0"

1 WEST ELEVATION
SCALE: 3/32" = 1'-0"



- T.O. ROOF
72'-8"
- SIXTH FLOOR
52'-6"
- FIFTH FLOOR
42'-0"
- FOURTH FLOOR
31'-6"
- THIRD FLOOR
21'-0"
- SECOND FLOOR
10'-6"
- FIRST FLOOR
0"
- BASEMENT 1 FLOOR
-10'-0"
- BASEMENT 2 FLOOR
-20'-0"

2 SOUTH ELEVATION
SCALE: 3/32" = 1'-0"



0 ELEVATION KEY PLAN
SCALE: 1/32" = 1'-0"



ISSUE NO.	DESCRIPTION	DATE

Architect:	
------------	--

Client:	Affordable Housing Association of Nova Scotia
---------	---

Project:	AHANS Sackville Drive Apartments PID 40423899
----------	---

Issue:	DRAFT DESIGN DOCUMENTS Issued for Development Agreement
--------	---

Date:	2025-05-08
-------	------------

Building Elevations	
---------------------	--

Drawn By:	ZM,JP	Checked By:	NL
A201			

© Passive Design Solutions

Designs and drawings are the exclusive copyright of PDS. The drawings cannot be reproduced, modified, reused, published, presented or shared in any part or whole without written consent from PDS. Purchase of a plan set from PDS, provides a non-exclusive right to build a single building. Building more than one building from this plan set is an infringement of the Copyright Act.



AFFORDABLE HOUSING
ASSOCIATION OF NOVA SCOTIA



1 EAST ELEVATION
SCALE: 3/32" = 1'-0"



2 NORTH ELEVATION
SCALE: 3/32" = 1'-0"



0 ELEVATION KEY PLAN
SCALE: 1/32" = 1'-0"

ISSUE NO.	DESCRIPTION	DATE
Architect:		
Client:		
Project:		
Issue:		
Date:		
Building Elevations		
Drawn By:	ZM,JP	Checked By:
A202		NL

© Passive Design Solutions

Designs and drawings are the exclusive copyright of PDS. The drawings cannot be reproduced, modified, reused, published, presented or shared in any part or whole without written consent from PDS. Purchase of a plan set from PDS, provides a non-exclusive right to build a single building. Building more than one building from this plan set is an infringement of the Copyright Act.



AFFORDABLE HOUSING
ASSOCIATION OF NOVA SCOTIA

ISSUE NO.	DESCRIPTION	DATE
-----------	-------------	------

Architect:	
------------	--

Client:
Affordable Housing
Association of Nova
Scotia

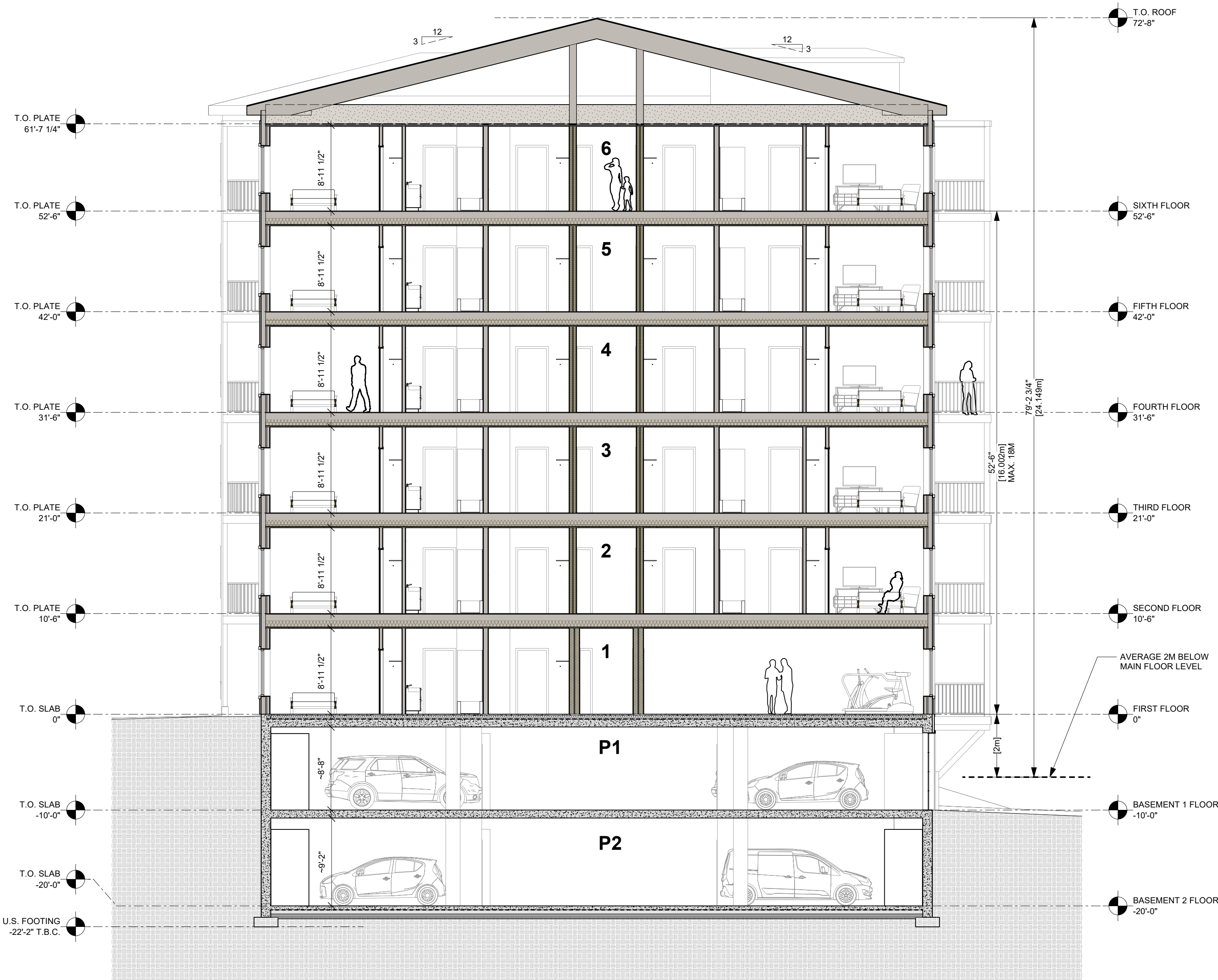
Project:
**AHANS Sackville Drive
Apartments**
PID 40423899

Issue:
**DRAFT DESIGN
DOCUMENTS**
Issued for Development Agreement

Date:
2025-05-08

Building Sections	
Drawn By:	ZM,JP
Checked By:	NL

A301



1 TRANSVERSE SECTION
SCALE: 1/8" = 1'-0"



0 SECTION KEY PLAN
SCALE: 1/32" = 1'-0"