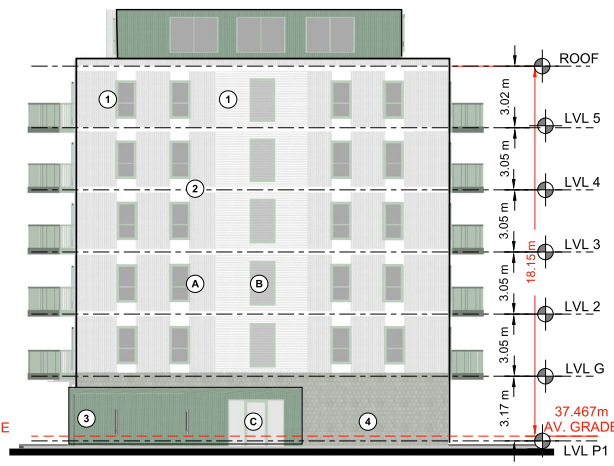


23-28 NOVAWOOD/ DA APPLICATION



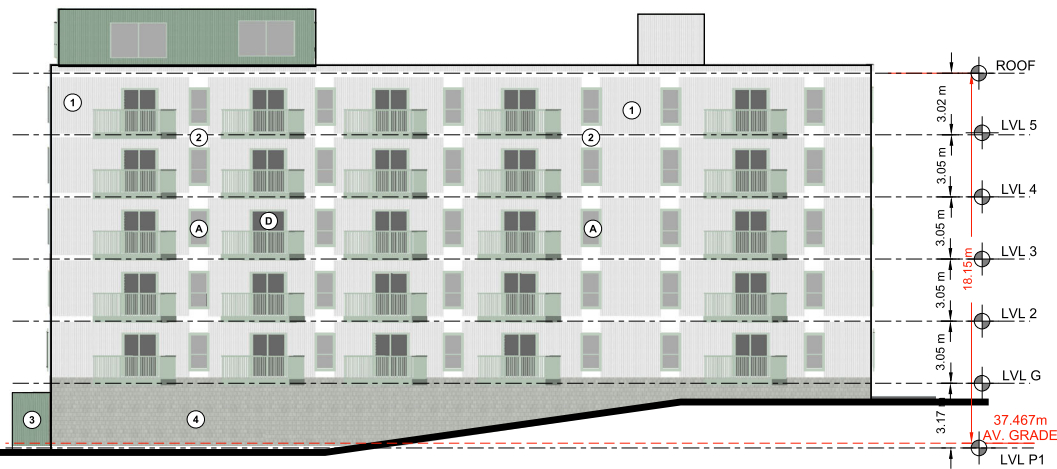
NORTH-WEST ELEVATION



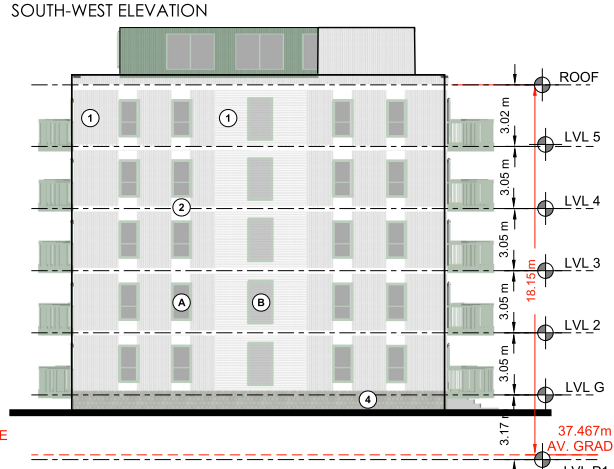
SOUTH-WEST ELEVATION

EXTERIOR MATERIALS LEGEND	
1	PRE-ENGINEERED CLADDING TYPE 1
2	PRE-ENGINEERED CLADDING TYPE 2
3	PRE-ENGINEERED CLADDING TYPE 3
4	MASONRY VENEER CLADDING

WINDOWS LEGEND	
A	WINDOW
B	WINDOW
C	ENTRY DOOR
D	PATIO DOOR



SOUTH-EAST ELEVATION

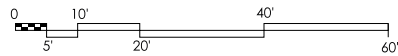


NORTH-EAST ELEVATION

ELEVATIONS - BUILDING A

NOTES

- SITE SUBJECT TO SURVEY. PROPERTY LINES AND TOPOGRAPHIC FEATURES ARE APPROXIMATE ONLY



C:\Users\Mania\Zwickler\Tarek\Architecture & Planning\Projects - 2022\Projects\22-031 Novawood_CAST_Inv\52_Arch SD\1 Working\22-031 NOVAWOOD.DR-100



23-28 NOVAWOOD/ DA APPLICATION



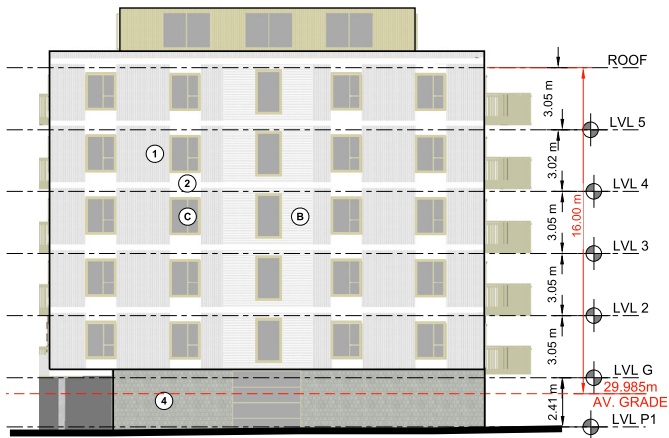
NORTH-EAST ELEVATION



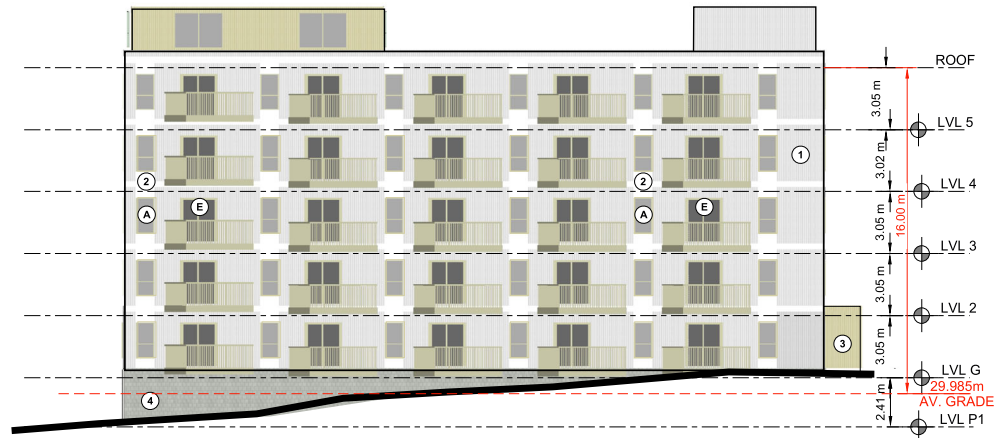
NORTH-WEST ELEVATION

EXTERIOR MATERIALS LEGEND	
1	PRE-ENGINEERED CLADDING TYPE 1
2	PRE-ENGINEERED CLADDING TYPE 2
3	PRE-ENGINEERED CLADDING TYPE 3
4	MASONRY VENEER CLADDING

WINDOWS LEGEND	
A	WINDOW
B	WINDOW
C	WINDOW
D	ENTRY DOOR
E	PATIO DOOR



SOUTH-WEST ELEVATION

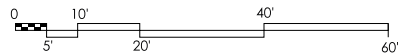


SOUTH-EAST ELEVATION

ELEVATIONS - BUILDING B

NOTES

- SITE SUBJECT TO SURVEY. PROPERTY LINES AND TOPOGRAPHIC FEATURES ARE APPROXIMATE ONLY



C:\Users\Mania\Zwickler\Tarek\Architecture & Planning\Projects - 2022\Projects\22-031 Novawood_CAD\Rev\52_Arch\SD1\Working\22-031-NOVAWOOD_DB-100



ENTRY, BALCONY RAILING, WINDOW & DOOR ACCENT COLOURS:



Tan
56074



Pacific Turquoise
56156



METAL CLADDING
CORRUGATED METAL - WHITE



REFERENCE

BUILDING CLADDING FIELD COLOURS:



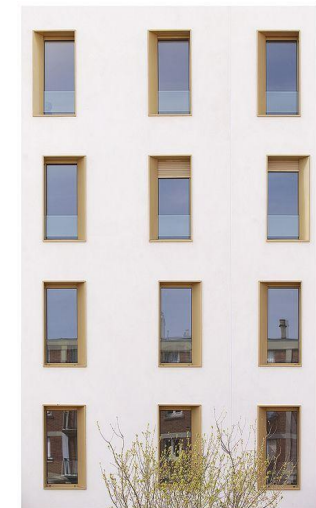
Stone Grey
56071
(22, 24, 26ga)



Regent Grey
56082
(22, 24, 26ga)



METAL CLADDING
CORRUGATED METAL - SILVER



REFERENCE

CLADDING ACCENT COLOURS:



Charcoal
56072
(22ga)



White-White
56076
(22ga)



Cambridge White
56161
(22ga)



PRODUCT: MASONRY CLADDING
COLOR: GREY