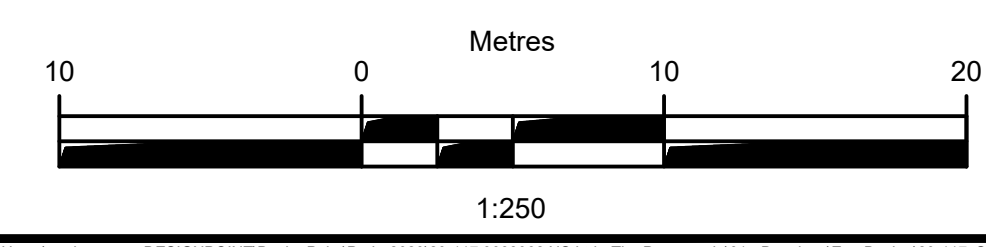
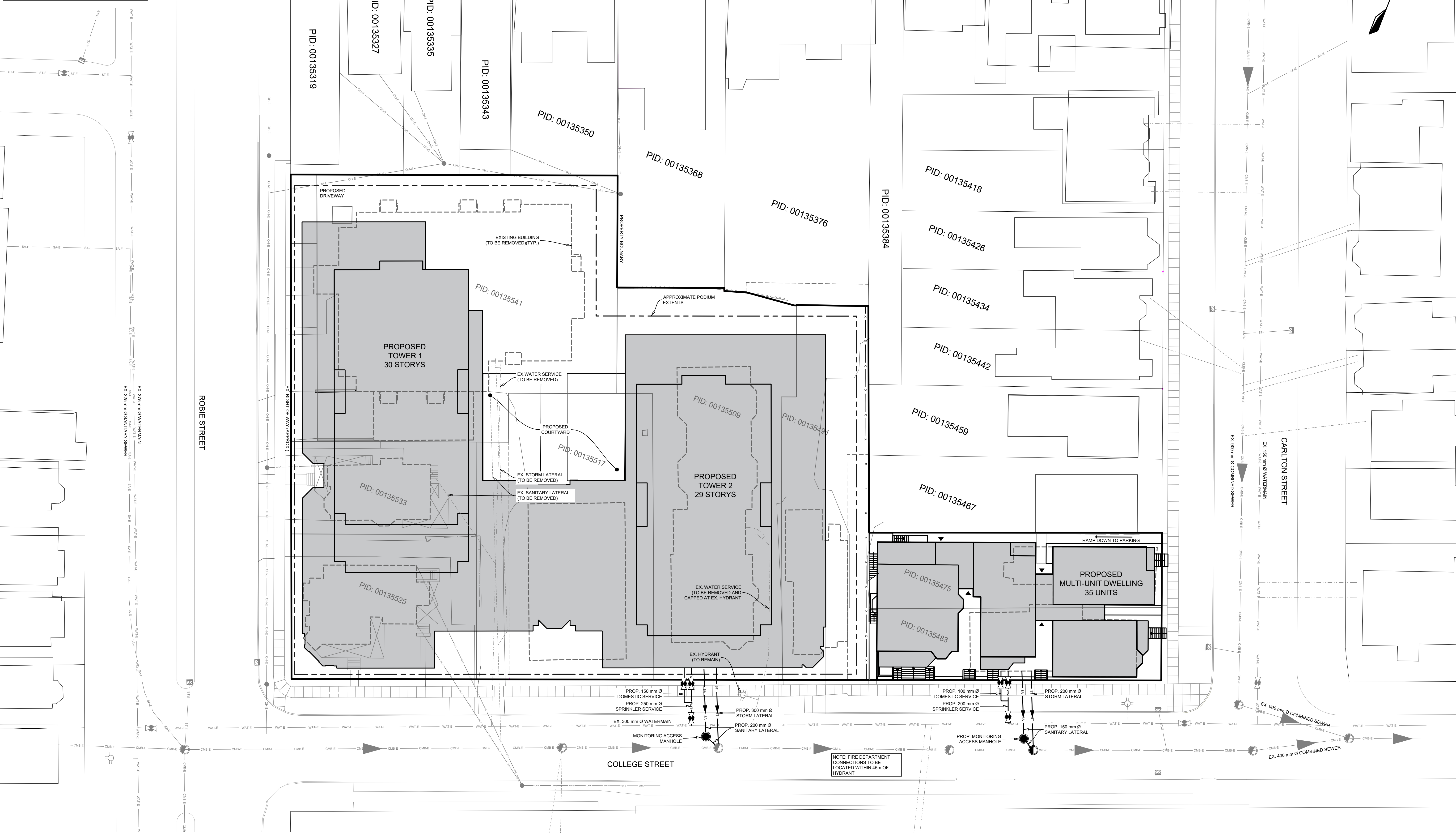


DOMESTIC WASTEWATER SUMMARY

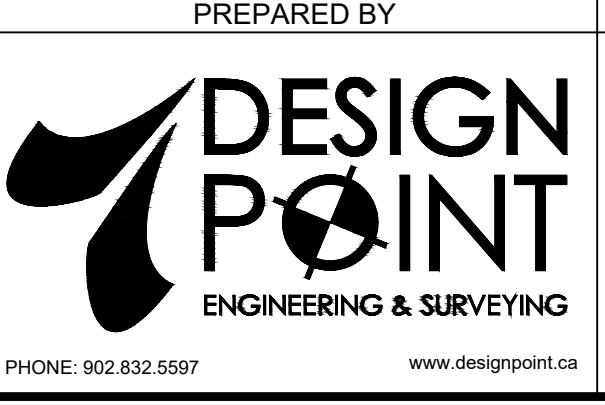
PHASE 1 - 35 UNITS @ 3.35 PPU
 PHASE 2 - 650 UNITS @ 2.25 PPU
 PHASE 1 PEAK DOMESTIC FLOW = 2.1 L/s
 PHASE 2 PEAK DOMESTIC FLOW = 24.2 L/s
 TOTAL ESTIMATED PEAK DOMESTIC FLOW = 26.4 L/s

*BASED ON 300 L/DAY/PERSON, HARMON PEAKING FACTOR,
 1.25 SAFETY FACTOR, AND 6 L/S/M² DAY FOR COMMERCIAL
 (BASED ON ATLANTIC WASTEWATER GUIDELINES MANUAL
 FOR COLLECTION, TREATMENT, AND DISPOSAL 2006)
 **INFLOW AND INFILTRATION ALLOWANCE NOT INCLUDED



- NOTES:**
1. ALL WORKS TO BE IN ACCORDANCE WITH HALIFAX WATER DESIGN AND CONSTRUCTION SPECIFICATIONS AND HALIFAX REGIONAL MUNICIPALITY MUNICIPAL DESIGN GUIDELINES (CURRENT EDITIONS).
 2. ALL WORKS TO BE IN ACCORDANCE WITH THE "STANDARD SPECIFICATION FOR MUNICIPAL SERVICES" PREPARED JOINTLY BY THE NOVA SCOTIA ROADBUILDERS ASSOCIATION AND THE CONSULTING ENGINEERS OF NOVA SCOTIA (CURRENT EDITION).
 3. ALL WORKS TO BE IN ACCORDANCE WITH REQUIREMENTS OF ALL PERMITS AND REGULATIONS AS ISSUED BY THE NOVA SCOTIA DEPARTMENT OF ENVIRONMENT.
 4. PROPERTY LINES BASED ON PROVINCIAL MAPPING AND ARE APPROXIMATE, AND SUBJECT TO LEGAL SURVEY.
 5. LOCATIONS OF EXISTING INFRASTRUCTURE IS BASED ON BEST AVAILABLE INFORMATION, INCLUDING RECORD INFORMATION.
 6. DRAWINGS SUBJECT TO APPROVAL BY THE APPLICABLE APPROVAL AGENCIES (i.e. HALIFAX WATER, NOVA SCOTIA DEPARTMENT OF ENVIRONMENT, HALIFAX REGIONAL MUNICIPALITY) PRIOR TO CONSTRUCTION.
 7. PROPOSED BUILDING IS BEING CONSTRUCTED ON EXISTING BUILDING SITES. SITE SURFACE COVER WILL BE SIMILAR BETWEEN EXISTING AND PROPOSED DEVELOPMENT. POST-DEVELOPMENT STORMWATER FLOWS ARE ANTICIPATED TO BE SIMILAR TO PRE-DEVELOPMENT FLOWS.
 8. PROPOSED PIPE SIZES AND LOCATIONS ARE PRELIMINARY AND SUBJECT TO DETAILED DESIGN AND APPROVAL, AND COORDINATION WITH MECHANICAL DESIGNER.

PREPARED FOR
3088962 NS LTD.



PROJECT

THE PROMENADE
 SERVICING SCHEMATIC

HALIFAX, NOVA SCOTIA

Engineer A. FORSYTHE	Drawn T. ARMOUR
Scale 1:250	Date JUN. 10, 2020
Project No. 20-117	Drawing No. C-CP01
Filename 20-117_Sch.dwg	1 OF 1