



Victoria Hall Revitalization Project

Creighton St Comparison

fathom





fathom



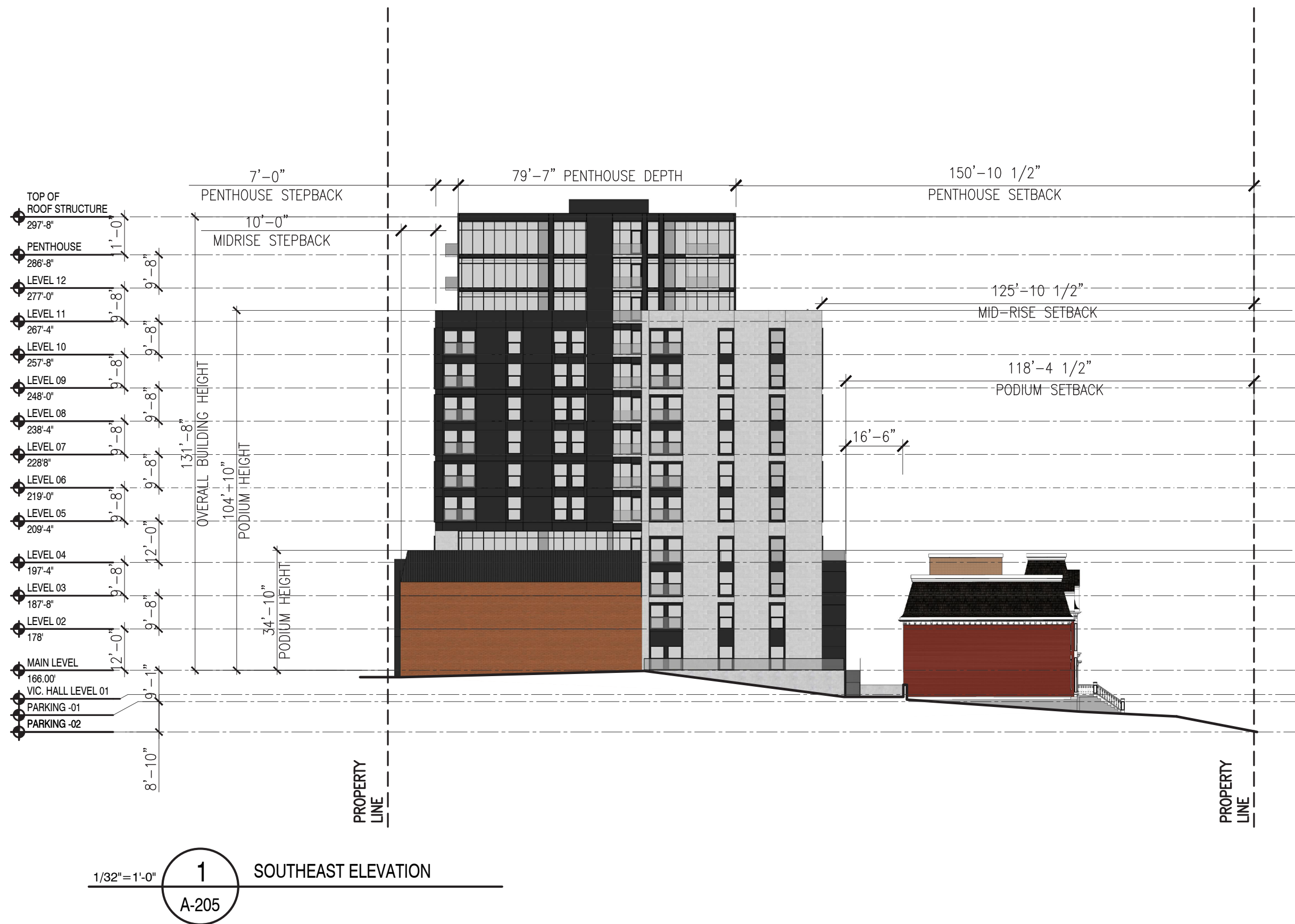


Fig. 1 2021-01-25 South East Elevation Design

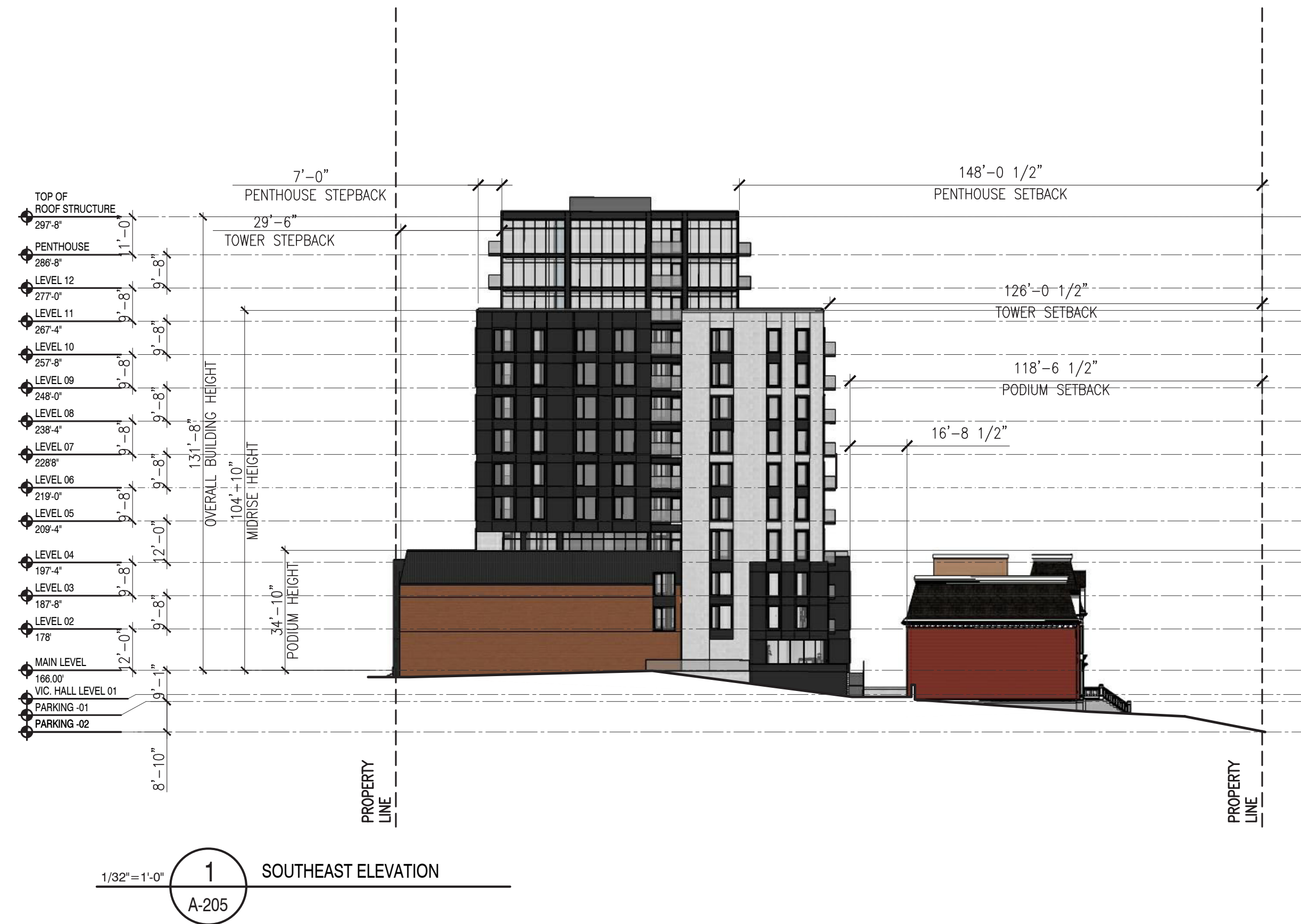


Fig. 2 2021-05-07 South East Elevation Design

Current design increases tower stepback from 10'-0" to 22'-6" to reduce the presence and visibility of the tower from the street level.



Fig. 3 2021-01-25 Creighton St Elevation Design



Fig. 4 2021-05-07 Creighton St Elevation Design



Additional ground-level entrance to corner unit to improve the rhythm on the street.