

PROJECT INFORMATION:

LOT SIZE: 4544m<sup>2</sup>  
BUILDING FOOTPRINT: 1500m<sup>2</sup>  
LOT COVERAGE: 35%  
EXTERNAL AMENITY SPACE AREA: 467m<sup>2</sup>

MINIMUM SETBACKS:

FRONT: 2.00m  
SIDE: 6.00m  
REAR: 10.96m

PARKING STALLS

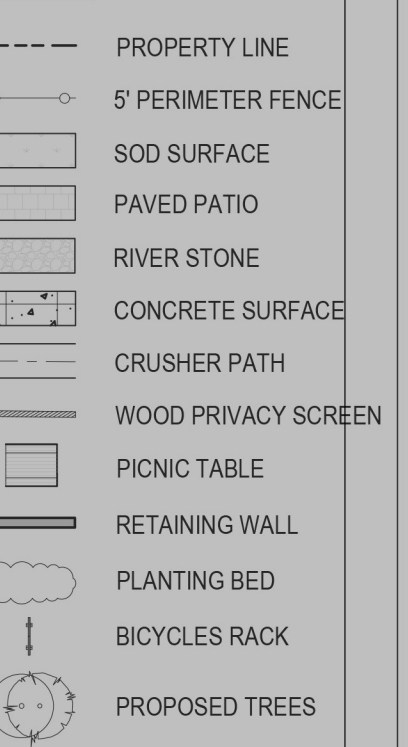
SURFACE PARKING STALLS	25
P1 GARAGE STALLS	32
P2 GARAGE STALLS	38
<b>TOTAL</b>	<b>95</b>

(TOTAL INCLUDES 4 COMMERCIAL PARKING STALLS WITH 1 BARRIER FREE)

PROPOSED  
BUILDING  
FOOTPRINT

FFL: 42.00  
P1: 39.25  
P2: 36.50  
AVG.GRD: 41.14

LEGEND



SITE PLAN

663 Portland Street, Dartmouth

DATE: 22-06-24

fathomstudio.ca  
1 Starr Lane  
Dartmouth, NS  
B2Y 4V7

fathom

Formerly  
Davies Planning & Design