
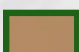


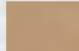
SCHEDULE 'D'  
PARKS AND OPEN SPACE  
PENHORN  
AUGUST 9 2021

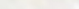
LEGEND


 Future Municipal Parkland = 4.18 Acres


 Previous Dedication\* of Municipal Parkland (Existing) = 5.0 Acres

Total Dedication of Municipal Parkland = 9.18 Acres

 Existing Municipal Parkland = 9.0± Acres

 Public Pedestrian Connectivity

 Stage 1 Boundary

 Existing Easement



PARK AREAS

(PD\*) PENHORN LAKE BEACH = 20234m<sup>2</sup>

P1 - LAKE SIDE PARK AREA = 5335m<sup>2</sup>

P2 - LINEAR GREENWAY & SQUARE = 2636m<sup>2</sup>  
(NOTE: DOES NOT INCLUDE R.O.W.)

P3 - BESIDE BROWNLOW PARK AREA = 1026m<sup>2</sup>

P4 - BLOCK H PARK AREA = 4216m<sup>2</sup>



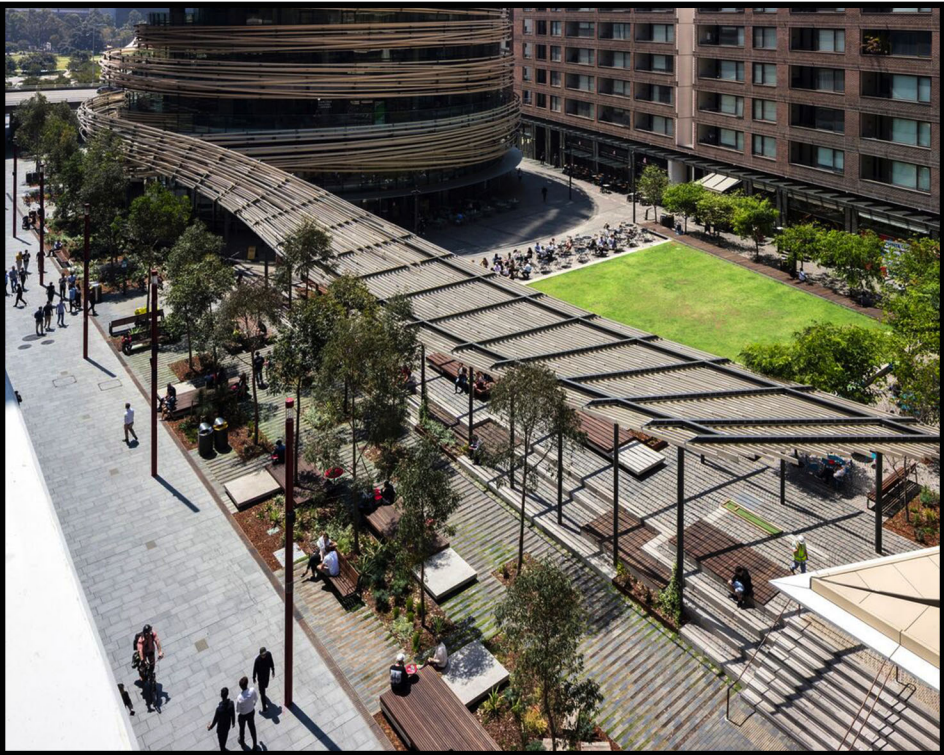


SCHEDULE 'D-1'  
PARK DETAILS

PENHORN  
AUGUST 9 2021



LINEAR TREE PLANTINGS



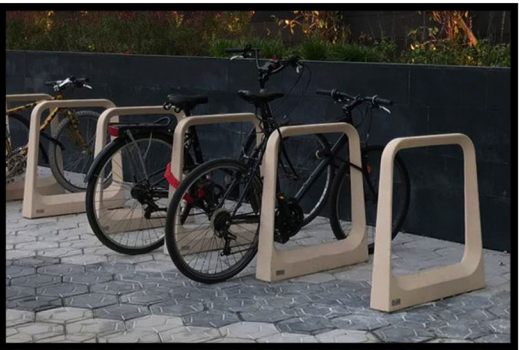
HARDESCAPED SQUARE WITH  
GREEN SPACE, SEATING &  
PLANTINGS



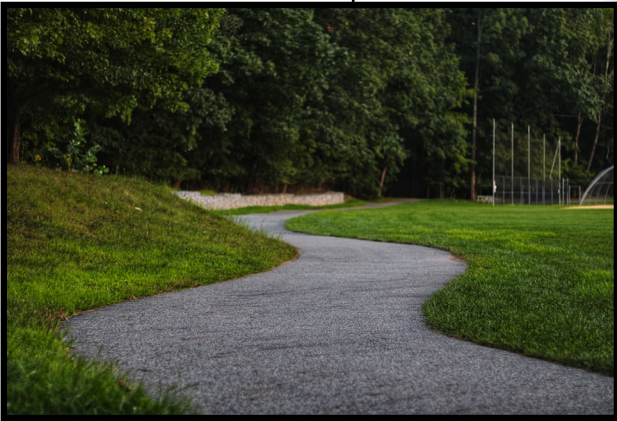
PUBLIC  
HAMMOCKS



FOOD TRUCK



BICYCLE RACK



LINEAR GREENWAY  
WITH ASPHALT PATH



SITTING STEPS



MULTI-USE  
PATH



LINEAR GREENWAY  
& SQUARE



PARK LIGHTING





### Schedule D-2 - Park Finish Elements

| <b>Linear Greenway &amp; Square 3042.7 m2</b>                             | Quantity | Unit |
|---|----------|------|
| Custom benches  | 13       | Each |
| Softscaped Area (150mm topsoil & sod)                                     | 2205.7   | m2   |
| Lighting  | 13       | each |
| Trees   | 21       | each |
| Shrubs/Plantings  | 21       | each |
| Mulch   | 45       | m2   |
| Pathway - Connection to Road 2 - 1.8 m wide - Asphalt                     | 140      | m    |
| Multi Use Path - Parallel to Road 1-C - width varies - Hard Surface/Paver | 485      | m2   |
| Hammocks  | 4        | each |
| Stairs/Retaining - Assorted   |          |      |
| Hardscape Square/Walkways   | 541.1    | m2   |
| Bike Racks  | 10       | each |
|   |          |      |
| <b><u>Other</u></b>   |          |      |
| P3 Brownlow MUP Connection to Brownlowe Park property line                | 17       | m2   |
| Parking Area on P4  | 1480     | m2   |
| P3 & P4 Softscaping (Grass/Soil)  | 3736     | m2   |
| P1 Grass/soil   | 5335     | m2   |

Schedule D-3 Parkland Area Contribution Calculations

Penhorn Parkland Calculation

10-Aug-21

| <u>Parcel</u>                                       | <u>Area (m2)</u> | <u>Area Sq feet</u> |
|---|------------------|---------------------|
| <b>A -Penhorn Lake Park (1973)</b>                  | <b>20234.3</b>   | <b>217,800</b>      |
| P1 Lakeside Park Area                               | 5335.0           | 57,425              |
| P2 Linear Greenway & Square (excluding 3m MUP area) | 2636.4           | 28,377              |
| P2 Connection to Road 2                             | 744.5            | 8,014               |
| P3 Beside Brownlow Park Area                        | 1026.0           | 11,044              |
| P4 Block H Park Area                                | 4216.8           | 45,389              |
| <b>B - Total New Dedication</b>                     | <b>13959</b>     | <b>150250</b>       |

| <u>Development Area</u>                          | <u>Area (m2)</u>  | <u>Area Sq feet</u> |
|--|-------------------|---------------------|
| Block E1   | 6983.16           | 75,166              |
| Block E2   | 5681              | 61,150              |
| Block A  | 8575              | 92,301              |
| Block B  | 8576              | 92,311              |
| Block C  | 5268.7            | 56,712              |
| Block D  | 5659.257          | 60,916              |
| Block F  | 4041.312          | 43,500              |
| Block G  | 4309.266          | 46,385              |
| Block H  | 12736.2           | 137,091             |
| Future Development                               | 69947.93          | 752,913             |
| <b>C - Total Development (including Stage 2)</b> | <b>131777.825</b> | <b>1,418,445</b>    |
| <b>C 1 - Stage 1 Development</b>                 | <b>61829.895</b>  | <b>665531.4504</b>  |

**Parkland Contribution for Stage 1  
Development (to date)**  
**Parkland Contribution for Stage 1  
Development (to date) including 1973  
donation**

|            |            |
|------------|------------|
| <b>18%</b> | <b>18%</b> |
| <b>36%</b> | <b>36%</b> |