

EXTERIOR MATERIALS LEGEND	
1	CLADDING A
2	CLADDING B
3	CLADDING C
4	ALUMINUM CURTAIN WALL
5	PVC/ALUMINUM WINDOW
6	8' PVC/ALUMINUM PATIO DOOR
7	GARAGE DOOR
8	10' STOREFRONT GLAZING
9	ENTRANCE CLADDING



22-077_DA_Building Elevations

zzap
 architecture + planning
 1 Canal St, Dartmouth
 NS B2Y 2W1 | zzap.ca

CLIENT
FE2 HOLDINGS

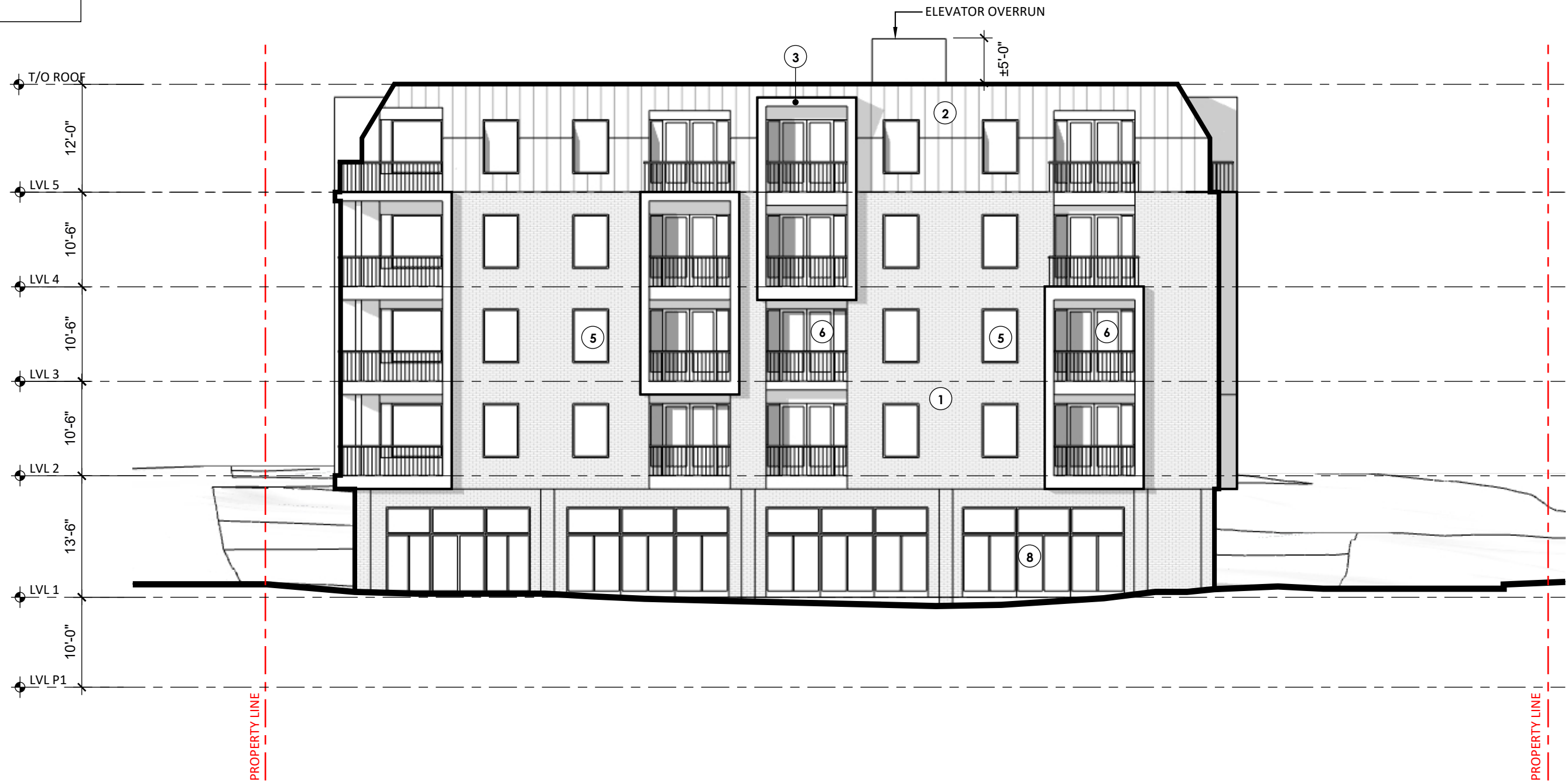
PROJECT
107 WOODLAWN ROAD | 4-6 SETTLE STREET
 Dartmouth, NS

DRAWING
NORTH (WOODLAWN RD.) ELEVATION
 SCALE: 1:150

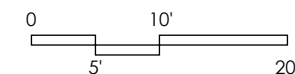
PROJECT NO. **22-077**
 DRAWN BY: AS
 ISSUED FOR REVIEW
 DATE: June 20, 2024

SCHEDULE C1

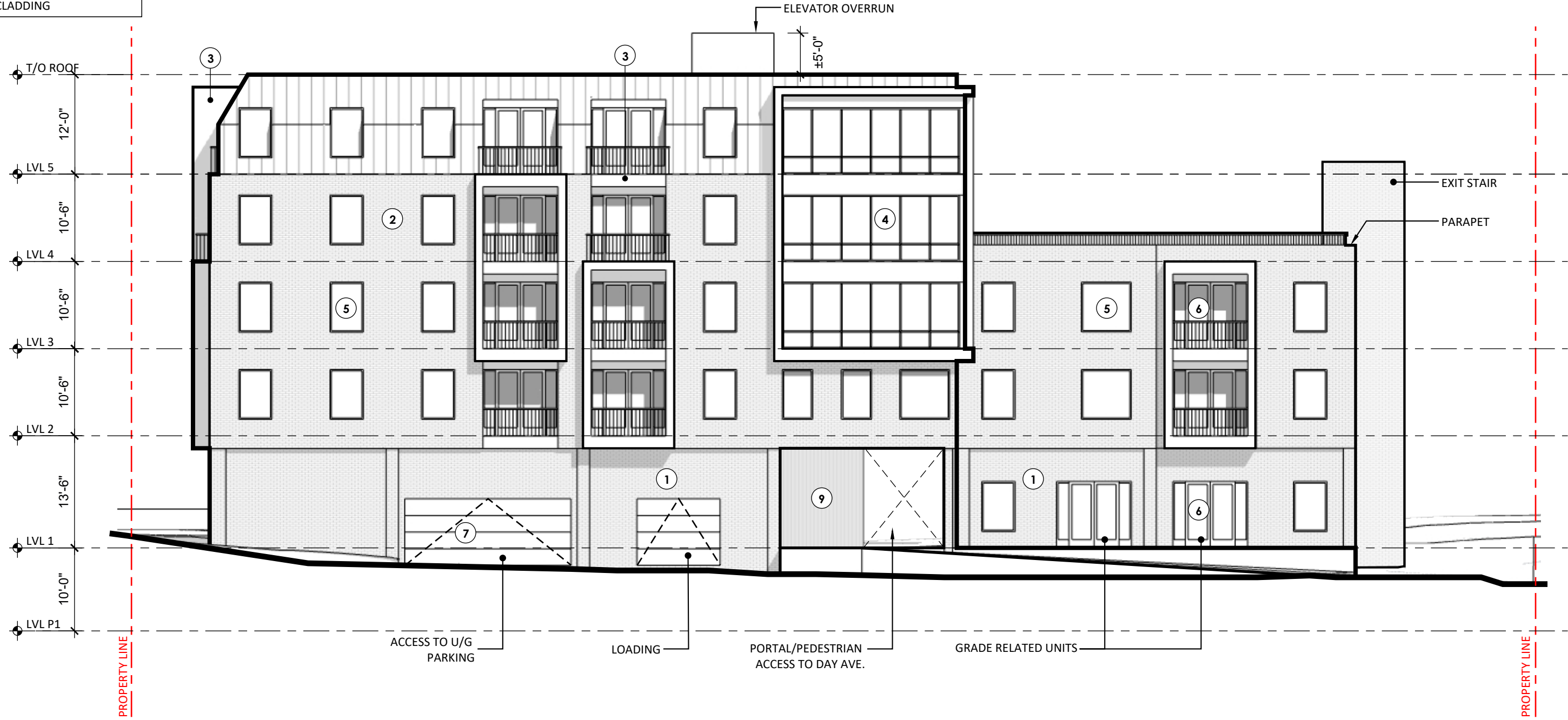
EXTERIOR MATERIALS LEGEND	
1	CLADDING A
2	CLADDING B
3	CLADDING C
4	ALUMINUM CURTAIN WALL
5	PVC/ALUMINUM WINDOW
6	8' PVC/ALUMINUM PATIO DOOR
7	GARAGE DOOR
8	10' STOREFRONT GLAZING
9	ENTRANCE CLADDING



22-077_DA_Building Elevations



EXTERIOR MATERIALS LEGEND	
1	CLADDING A
2	CLADDING B
3	CLADDING C
4	ALUMINUM CURTAIN WALL
5	PVC/ALUMINUM WINDOW
6	8' PVC/ALUMINUM PATIO DOOR
7	GARAGE DOOR
8	10' STOREFRONT GLAZING
9	ENTRANCE CLADDING



22-077_DA_Building Elevations

z zap
 architecture + planning
 1 Canal St, Dartmouth
 NS B2Y 2W1 | zzap.ca

CLIENT
FE2 HOLDINGS

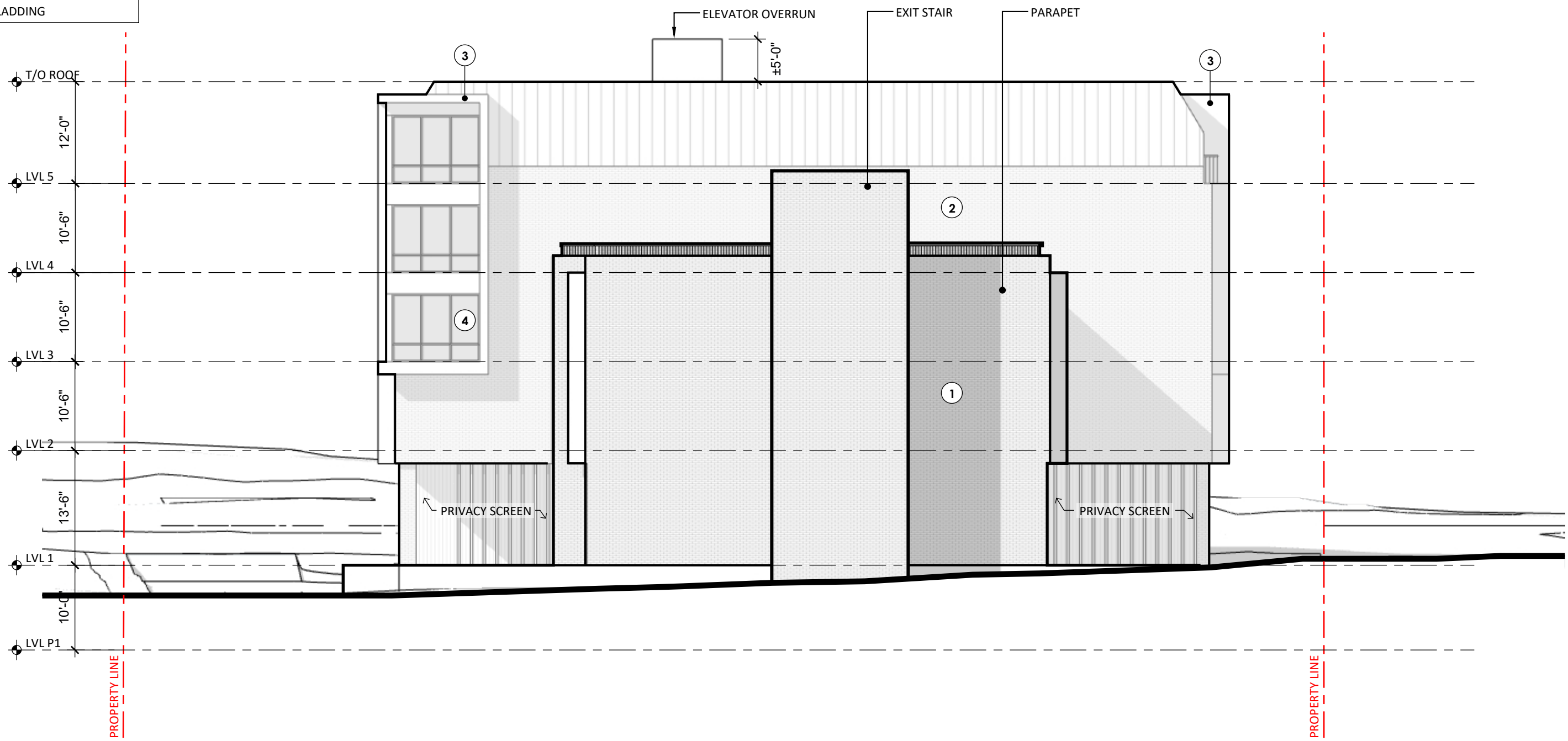
PROJECT
107 WOODLAWN ROAD | 4-6 SETTLE STREET
 Dartmouth, NS

DRAWING
SOUTH ELEVATION
 SCALE: 1:150

PROJECT NO. **22-077**
 DRAWN BY: AS
 ISSUED FOR REVIEW
 DATE: June 20, 2024

SCHEDULE C3

EXTERIOR MATERIALS LEGEND	
1	CLADDING A
2	CLADDING B
3	CLADDING C
4	ALUMINUM CURTAIN WALL
5	PVC/ALUMINUM WINDOW
6	8' PVC/ALUMINUM PATIO DOOR
7	GARAGE DOOR
8	10' STOREFRONT GLAZING
9	ENTRANCE CLADDING



22-077_DA_Building Elevations

zzap
 architecture + planning
 1 Canal St, Dartmouth
 NS B2Y 2W1 | zzap.ca

CLIENT
FE2 HOLDINGS

PROJECT
107 WOODLAWN ROAD | 4-6 SETTLE STREET
 Dartmouth, NS

DRAWING
EAST ELEVATION
 SCALE: 1:150

PROJECT NO. **22-077**
 DRAWN BY: AS
 ISSUED FOR REVIEW
 DATE: June 20, 2024

SCHEDULE C4