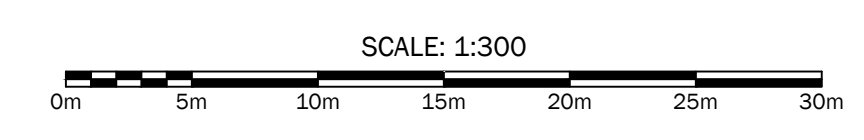


- NOTES:**
1. ALL MEASUREMENTS SHOWN ARE IN METRIC UNITS OF MEASURE.
 2. TOPOGRAPHIC SURVEY DATA SHOWN HAS BEEN PRODUCED BY ABLE ENGINEERING SERVICES ON 11/16/2023 & 11/14/2023. VALUES SHOWN ARE DERIVED FROM G.P.S. OBSERVATIONS ON NOVA SCOTIA GRID COORDINATE SYSTEM NAD83 CSRS 2010 CGVD2013.
 3. THIS IS NOT A LEGAL BOUNDARY SURVEY, BOUNDARIES SHOWN HERE ARE APPROXIMATE, DERIVED FROM PROPERTY ONLINE MAPPING/PLAN OF SURVEY AND FIELD RECONNAISSANCE BY CIVIL ENGINEERING TECHNICIAN. BOUNDARIES ARE SUBJECT TO A LEGAL FIELD SURVEY BY A LICENSED NSLS, AND A LEGAL SURVEY MAY CAUSE OFFSETS AND BOUNDARIES TO DIFFER FROM WHAT IS SHOWN HEREIN.
 4. ALL WORK MUST CONFORM TO HALIFAX WATER AND HALIFAX REGIONAL MUNICIPALITY STANDARDS AND SPECIFICATIONS (LATEST EDITION).
 5. SLOPES GREATER THAN 2:1 SHALL BE DESIGNED BY A GEOTECHNICAL ENGINEER.
 6. EXISTING CONTOURS ARE BASED ON 2019 LIDAR DATA WITH AN INTERVAL OF 1m & 5m.

No.	Revision Description	By
1	07/03/2024 ISSUED FOR COORDINATION	EF
	MMD/YYYY Revision Description	



Seal



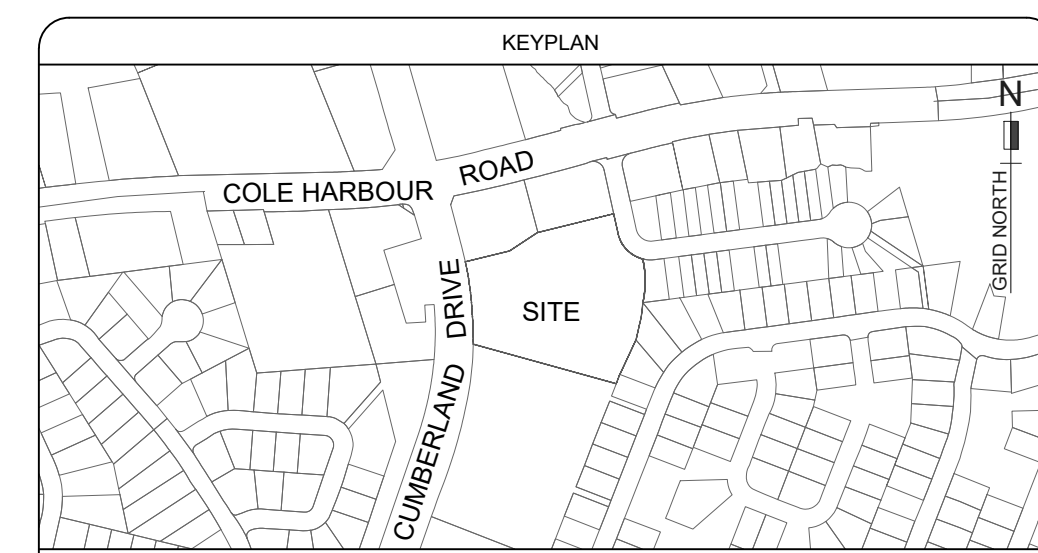
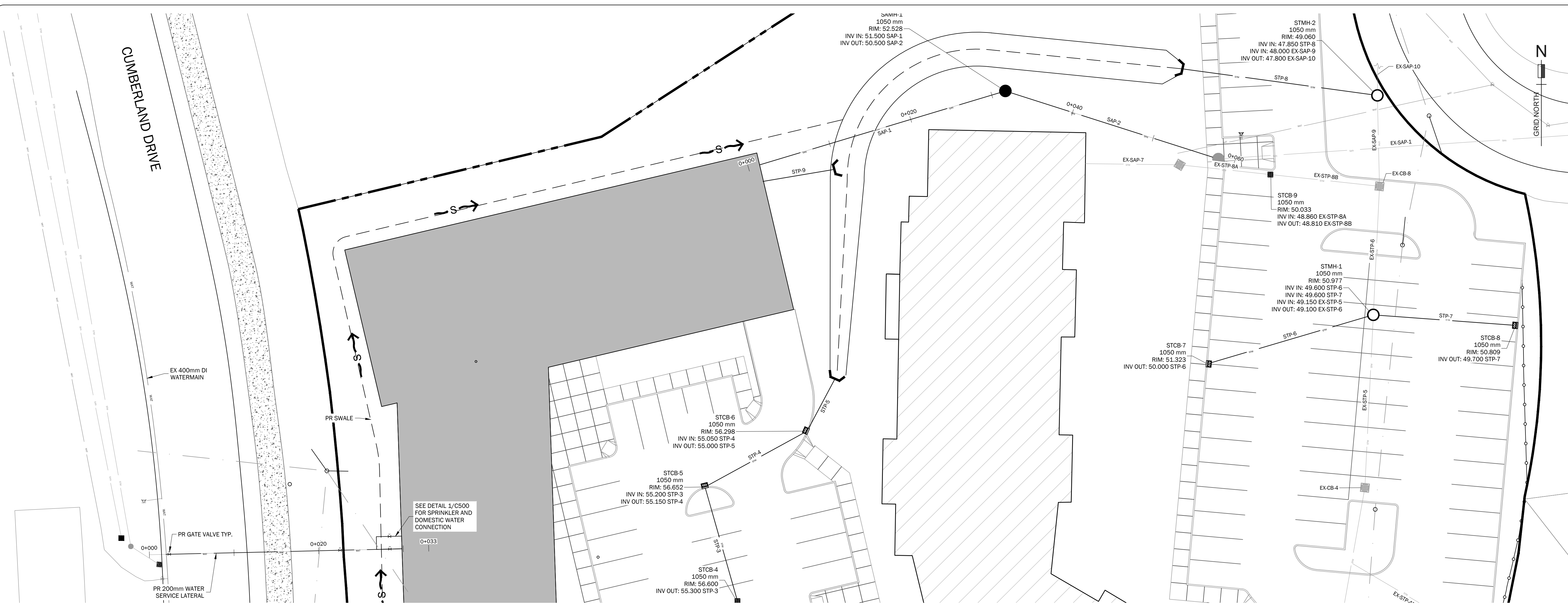
Horizontal 1:300	Vertical N/A	Plot ARCH D (24"x36")
---------------------	-----------------	--------------------------

Project
10 CUMBERLAND DRIVE
COLE HARBOUR, NS
PID 40127003

Title
BASE PLAN

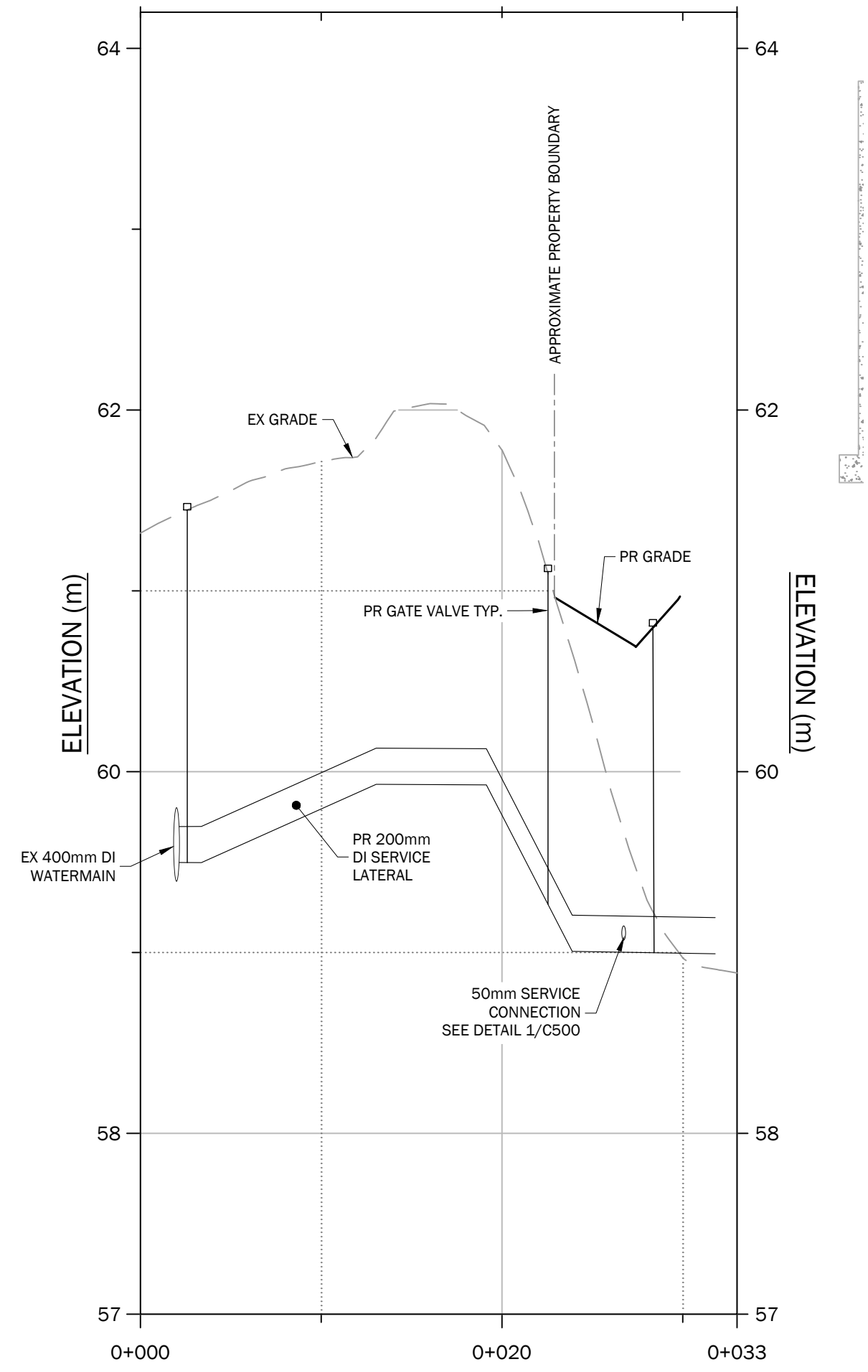
Project No.	Drawn J. LITT	Sheet 1 of 1
Ref.	Engineer	Plan No. C100
Date OCTOBER 26TH 2023	Check	

SHEET PRODUCED THROUGH THE CAD FILE 1004262023.DWG

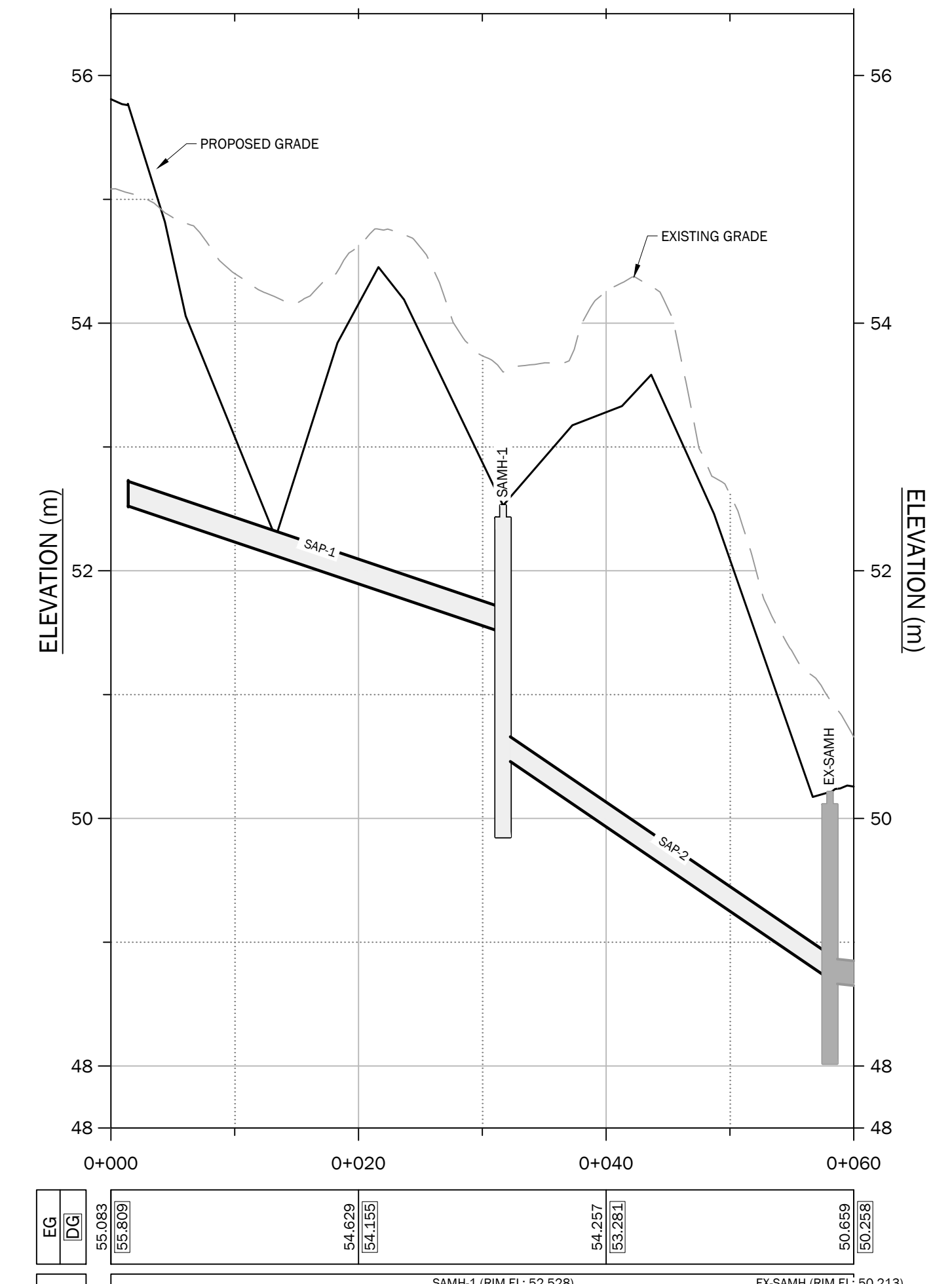


- NOTES:**
1. ALL MEASUREMENTS SHOWN ARE IN METRIC UNITS OF MEASURE.
 2. TOPOGRAPHIC SURVEY DATA SHOWN HAS BEEN PRODUCED BY ABLE ENGINEERING SERVICES ON 11/16/2023 & 11/14/2023. VALUES SHOWN ARE DERIVED FROM G.P.S. OBSERVATIONS ON NOVA SCOTIA GRID COORDINATE SYSTEM NAD83 CSRS 2010 CGVD2013.
 3. THIS IS NOT A LEGAL BOUNDARY SURVEY, BOUNDARIES SHOWN HERE ARE APPROXIMATE, DERIVED FROM PROPERTY ONLINE MAPPING/PLAN OF SURVEY AND FIELD RECONNAISSANCE BY CIVIL ENGINEERING TECHNICIAN. BOUNDARIES ARE SUBJECT TO A LEGAL FIELD SURVEY BY A LICENSED NSLS, AND A LEGAL SURVEY MAY CAUSE OFFSETS AND BOUNDARIES TO DIFFER FROM WHAT IS SHOWN HEREIN.
 4. ALL WORK MUST CONFORM TO HALIFAX WATER AND HALIFAX REGIONAL MUNICIPALITY STANDARDS AND SPECIFICATIONS (LATEST EDITION).
 5. SLOPES GREATER THAN 2:1 SHALL BE DESIGNED BY A GEOTECHNICAL ENGINEER.
 6. EXISTING CONTOURS ARE BASED ON 2019 LIDAR DATA WITH AN INTERVAL OF 1m & 5m.

1 SERVICE PLAN
SCALE: HORZ 1:250

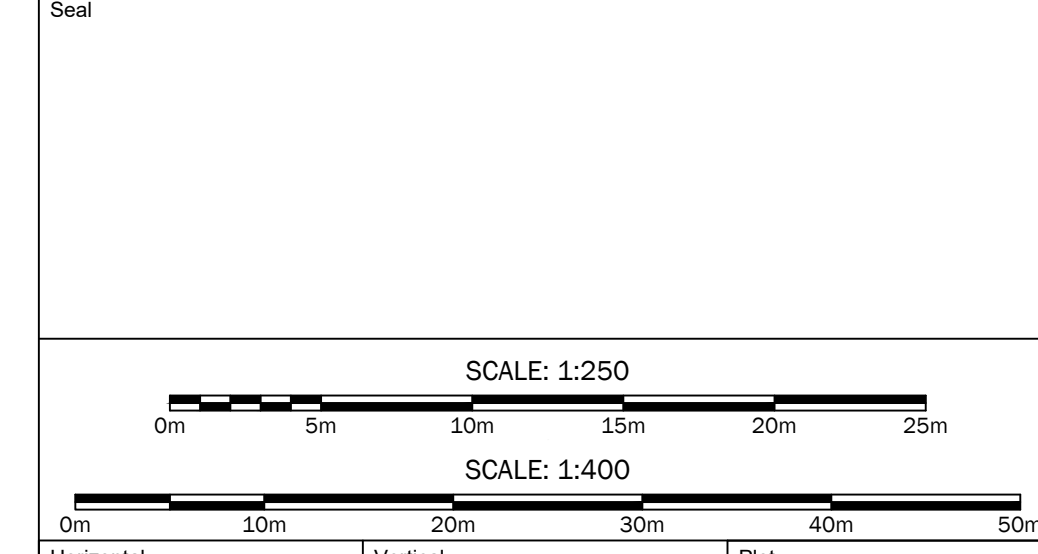


2 WATER SERVICE PROFILE
SCALE: HORZ 1:300 VERT 1:30



3 SANITARY SERVICE PROFILE
SCALE: HORZ 1:400 VERT 1:40

No.	07/03/2024	ISSUED FOR COORDINATION	EF
No.	MMDD/YYYY	Revision Description	By



Project		
10 CUMBERLAND DRIVE COLE HARBOUR, NS PID 40127003		
Title		
WATER AND SANITARY PLAN AND PROFILE		
Project No.	Drawn	Sheet
	J. LITT	1 of 1
Ref.	Engineer	Plan No.
		C100
Date	Check	
OCTOBER 26TH 2023		