





PROGRAM

1. Foyer	ca. 30m <sup>2</sup>
2. Luggage storage	ca. 8m <sup>2</sup>
3. Multi-functional space	ca. 100m <sup>2</sup>
4. Dining room with bar	ca. 200m <sup>2</sup>
5. Kitchen	ca. 60m <sup>2</sup>
6. Pantry and walk-in refrigerator	ca. 50m <sup>2</sup>
7. Building services	ca. 50m <sup>2</sup>
8. Office	ca. 25m <sup>2</sup>
9. Restroom (5x toilet, 5x urinal)	ca. 30m <sup>2</sup>
10. Wellness/Sauna	ca. 30m <sup>2</sup>

LEGEND

-  Horizontal circulation
-  Vertical circulation
-  Guests
-  Employees

PROJECT:

Community House Nova Scotia

DESIGN:

Bellevue Concepts GmbH

PLAN DESCRIPTION:



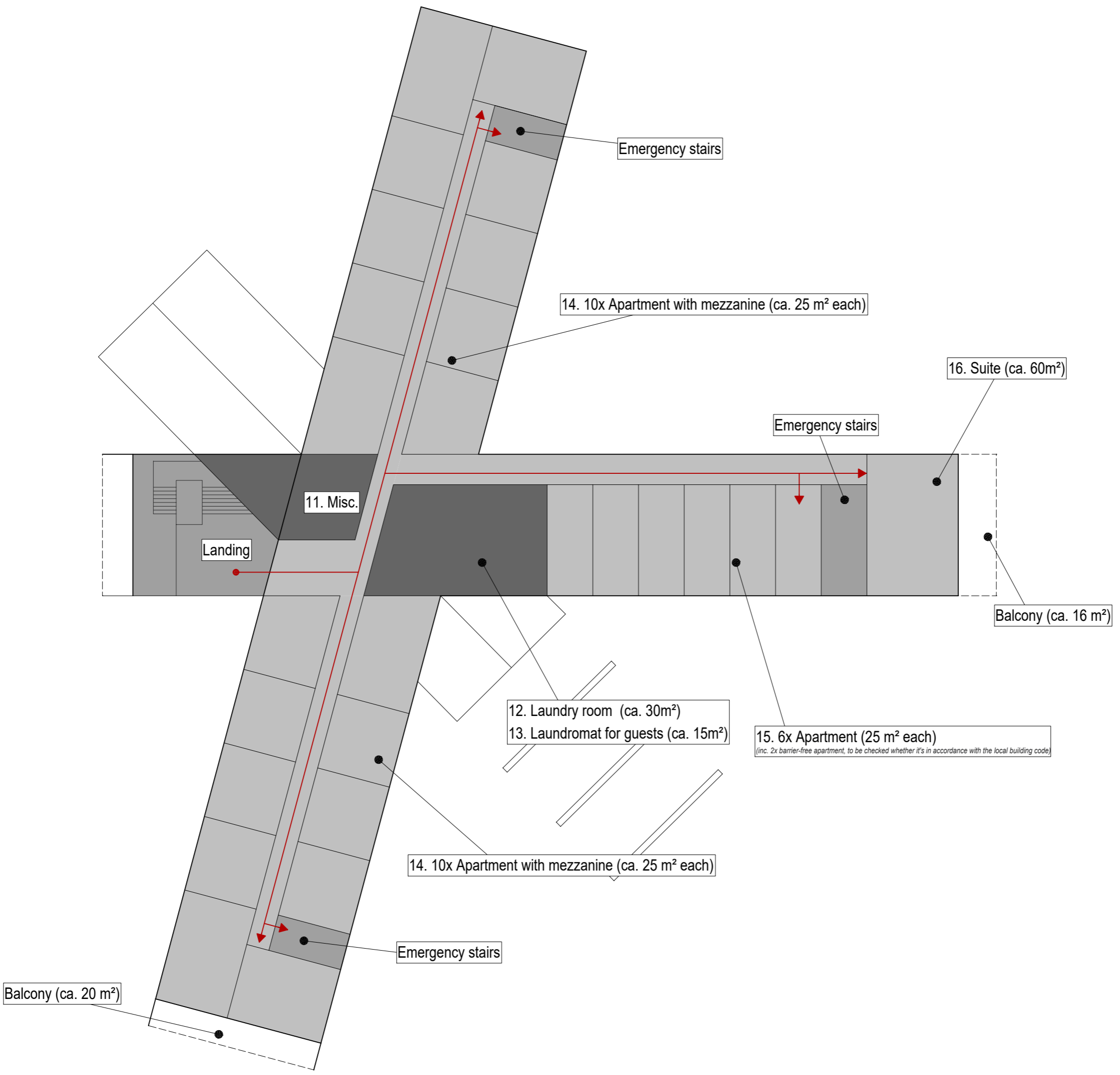
Preliminary design  
Ground Floor

*Program and circulation*

DATE: 2023-07-18	DRAFTSMAN: BvK	SCALE: 1:250
---------------------	-------------------	-----------------

FORMAT A3	INDEX
--------------	-------

DRAWING NUMBER: P-100



PROGRAM

11. Miscellaneous	ca. 30m <sup>2</sup>
12. Laundry room	ca. 30m <sup>2</sup>
13. Laundromat	ca. 14m <sup>2</sup>
14. 20x apartment with mezzanine, kitchenette, toilet and shower	20xca.25m <sup>2</sup>
15. 6x apartment with kitchenet, toilet and shower	6xca.25m <sup>2</sup>
16. Suite with 2-3 rooms, kitchen, bathroom	ca. 60 m <sup>2</sup>

LEGEND

- Horizontal circulation
- Vertical circulation
- Guests
- Employees

PROJECT:

Community House Nova Scotia

DESIGN:

Bellevue Concepts GmbH

PLAN DESCRIPTION:



Preliminary design  
2nd Floor

*Program and circulation*

DATE:	DRAFTSMAN:	SCALE:
2023-07-03	BvK	1:250

FORMAT	INDEX
A3	

DRAWING NUMBER: **P-110**







