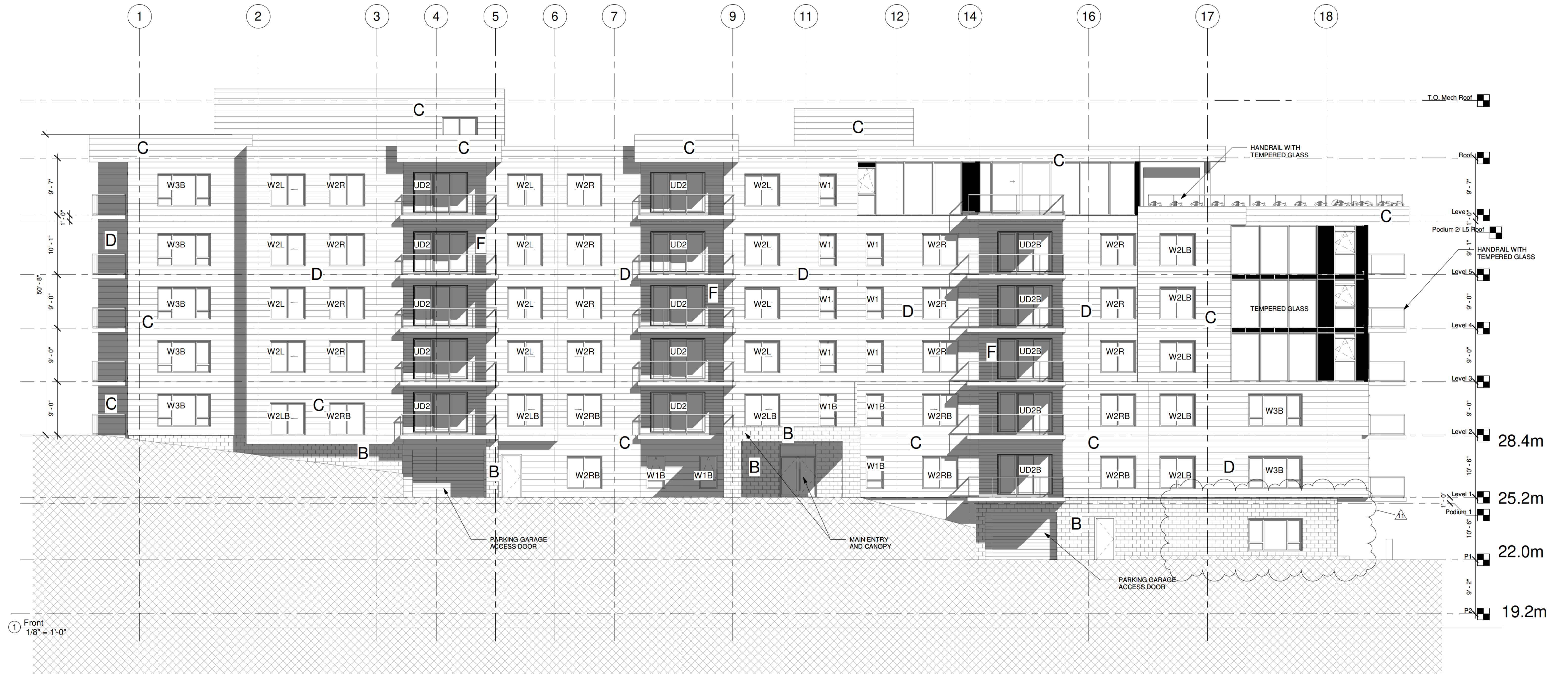
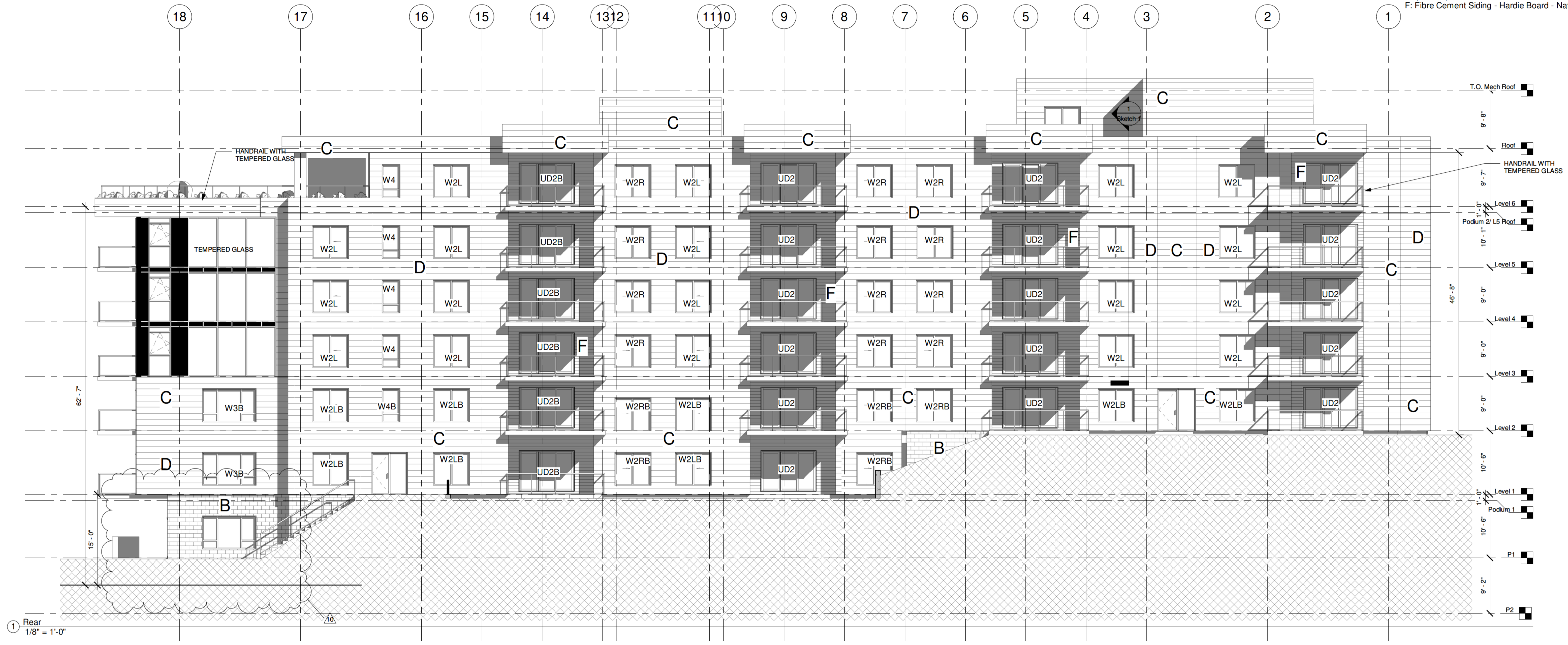


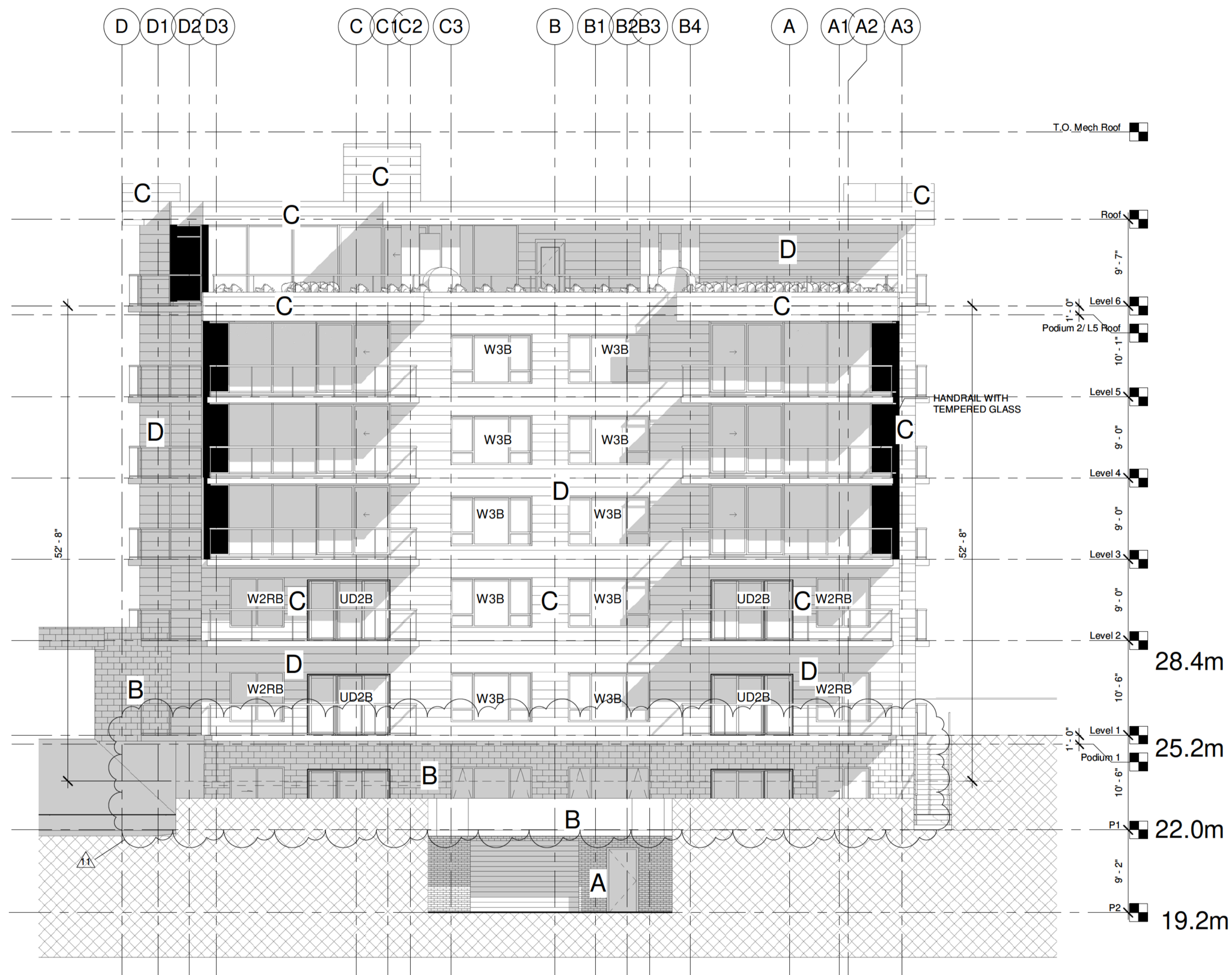
- LEGEND:
 A: Shaw Brick - Atlantic Clay Brick - Port Morien
 B: Shouldice Block - Pearl White
 C: Frontek - Black
 D: Frontek - White
 E: (deleted)
 F: Fibre Cement Siding - Hardie Board - Natural Honey



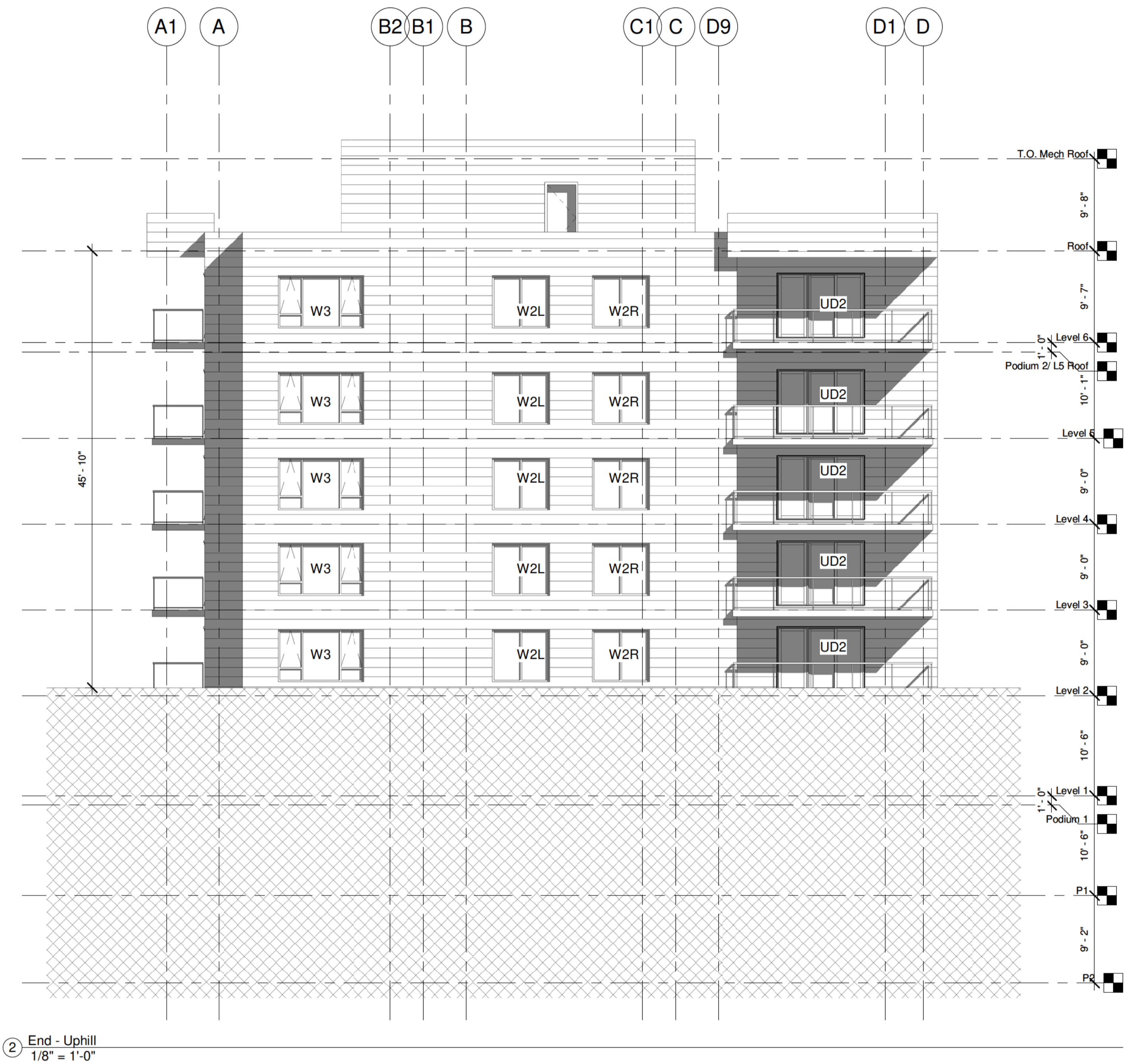
LEGEND:
 A: Shaw Brick - Atlantic Clay Brick - Port Morien
 B: Shouldice Block - Pearl White
 C: Frontek - Black
 D: Frontek - White
 E: (deleted)
 F: Fibre Cement Siding - Hardie Board - Natural Honey



- LEGEND:
 A: Shaw Brick - Atlantic Clay Brick - Port Morien
 B: Shouldice Block - Pearl White
 C: Frontek - Black
 D: Frontek - White
 E: (deleted)
 F: Fibre Cement Siding - Hardie Board - Natural Honey



① End
 1/8" = 1'-0"



② End - Uphill
 1/8" = 1'-0"