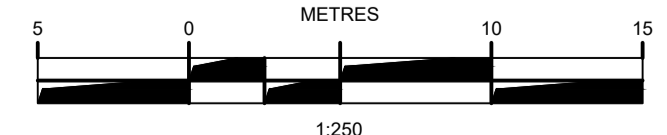
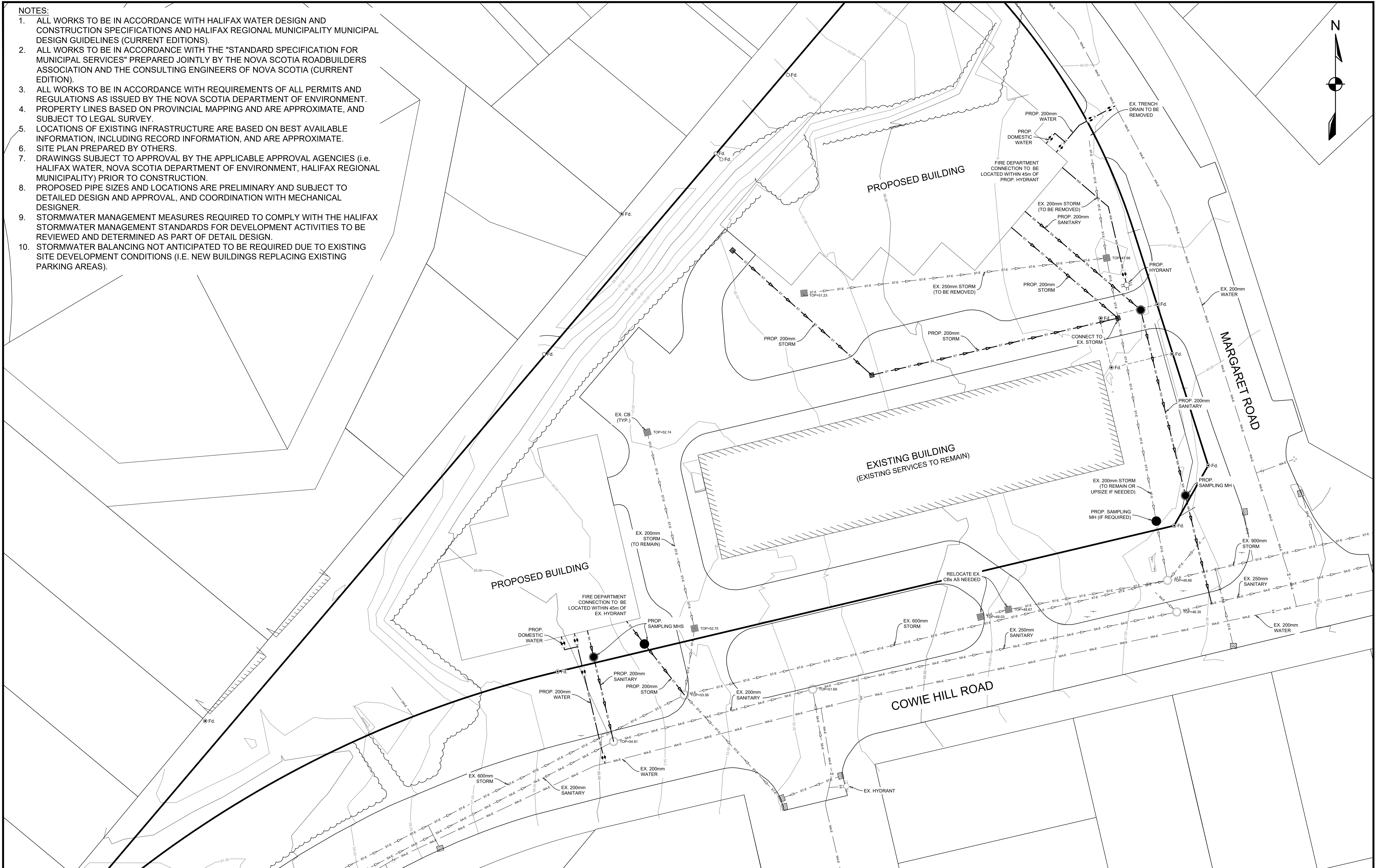
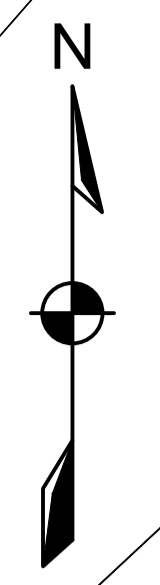


NOTES:

1. ALL WORKS TO BE IN ACCORDANCE WITH HALIFAX WATER DESIGN AND CONSTRUCTION SPECIFICATIONS AND HALIFAX REGIONAL MUNICIPALITY MUNICIPAL DESIGN GUIDELINES (CURRENT EDITIONS).
2. ALL WORKS TO BE IN ACCORDANCE WITH THE "STANDARD SPECIFICATION FOR MUNICIPAL SERVICES" PREPARED JOINTLY BY THE NOVA SCOTIA ROADBUILDERS ASSOCIATION AND THE CONSULTING ENGINEERS OF NOVA SCOTIA (CURRENT EDITION).
3. ALL WORKS TO BE IN ACCORDANCE WITH REQUIREMENTS OF ALL PERMITS AND REGULATIONS AS ISSUED BY THE NOVA SCOTIA DEPARTMENT OF ENVIRONMENT.
4. PROPERTY LINES BASED ON PROVINCIAL MAPPING AND ARE APPROXIMATE, AND SUBJECT TO LEGAL SURVEY.
5. LOCATIONS OF EXISTING INFRASTRUCTURE ARE BASED ON BEST AVAILABLE INFORMATION, INCLUDING RECORD INFORMATION, AND ARE APPROXIMATE.
6. SITE PLAN PREPARED BY OTHERS.
7. DRAWINGS SUBJECT TO APPROVAL BY THE APPLICABLE APPROVAL AGENCIES (i.e. HALIFAX WATER, NOVA SCOTIA DEPARTMENT OF ENVIRONMENT, HALIFAX REGIONAL MUNICIPALITY) PRIOR TO CONSTRUCTION.
8. PROPOSED PIPE SIZES AND LOCATIONS ARE PRELIMINARY AND SUBJECT TO DETAILED DESIGN AND APPROVAL, AND COORDINATION WITH MECHANICAL DESIGNER.
9. STORMWATER MANAGEMENT MEASURES REQUIRED TO COMPLY WITH THE HALIFAX STORMWATER MANAGEMENT STANDARDS FOR DEVELOPMENT ACTIVITIES TO BE REVIEWED AND DETERMINED AS PART OF DETAIL DESIGN.
10. STORMWATER BALANCING NOT ANTICIPATED TO BE REQUIRED DUE TO EXISTING SITE DEVELOPMENT CONDITIONS (I.E. NEW BUILDINGS REPLACING EXISTING PARKING AREAS).



PRELIMINARY
1 JUN 2023

PREPARED FOR	PREPARED BY	PROJECT	Engineer	Drawn
Hazelview Developments Inc	DESIGNPOINT engineering • surveying • solutions	SERVICING SCHEMATIC 41 COWIE HILL ROAD HALIFAX, NOVA SCOTIA	ASF	STAFF
			Scale	Date
			1:250	31 MAY 2023
			Project No.	Drawing No.
			22-200	C-SCH
			Filename	1 OF 1
			22-200_C SCH.dwg	