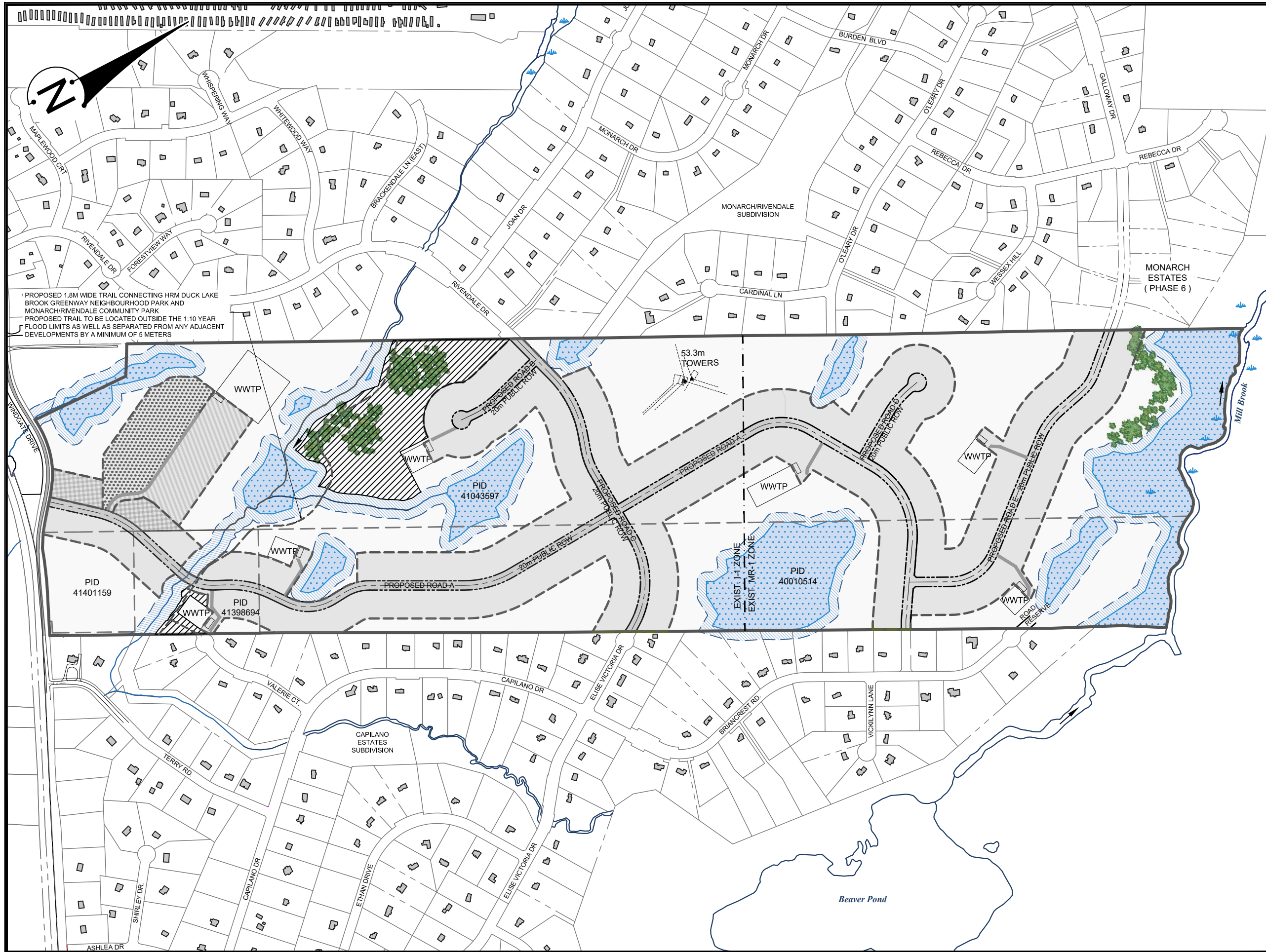


Schedule B: Concept Plan



LEGEND

- Site Boundary (DA)
- Adjacent Property Boundary
- Existing Zone Boundary
- Proposed Right of Way
- Proposed 1.8m Trail
- 40% Developable Area
- Area Defined for Unit Flexibility for Senior Citizen Housing in the form of Multiple-Unit Dwellings or Townhouse Dwellings
- Areas Defined for Unit Flexibility for Single Unit Dwellings or Senior Citizen Housing in the form of Townhouse Dwellings
- Areas Defined for Single Unit Dwellings
- Area Defined for Senior Citizen Housing in the form of Multiple-Unit Dwellings
- 5.0% Parkland Dedication (Including Trail)
- Mature Trees to be Retained

SITE SUMMARY:

- Land Area - 151.4 Ha (374 Ac.) + 23,625 sq. m.
- 60% Open Space Area
- Existing Zone - Mixed Industrial (I-1) / Mixed Resource (MR-1)
- Total Number Units: 374 Units

NOTES:

- WWTP locations and sizes subject to detailed design
- Property lines approximate only. Site subject to survey

SOURCES:

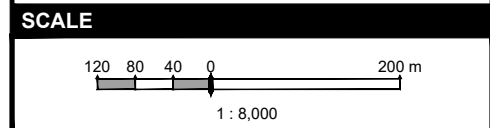
- Service Nova Scotia and Municipal Relations Property Online
- Service Nova Scotia and Municipal Relations 1:10,000 digital topographic series
- Site Wetlands and Watercourses shown were delineated by Jeff Burrows of Terra Firma Consultants File: Windgate Drive WETLANDS.dwg

Designer: JHARPER
 Planner: JHARPER

SCHEDULE
A.7

CLASSIC OPEN SPACE CONCEPT PLAN
 BEAVERBANK, NOVA SCOTIA

MARQUE INVESTMENTS LTD.
 September 03, 2021 141-24579_SCHEDULEA.7



1 SPECTACLE LAKE DRIVE, DARTMOUTH, NS, CANADA B3B 1X7
 PHONE: 902 835-9955 - FAX: 902 835-1645 - WSP.COM