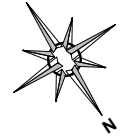


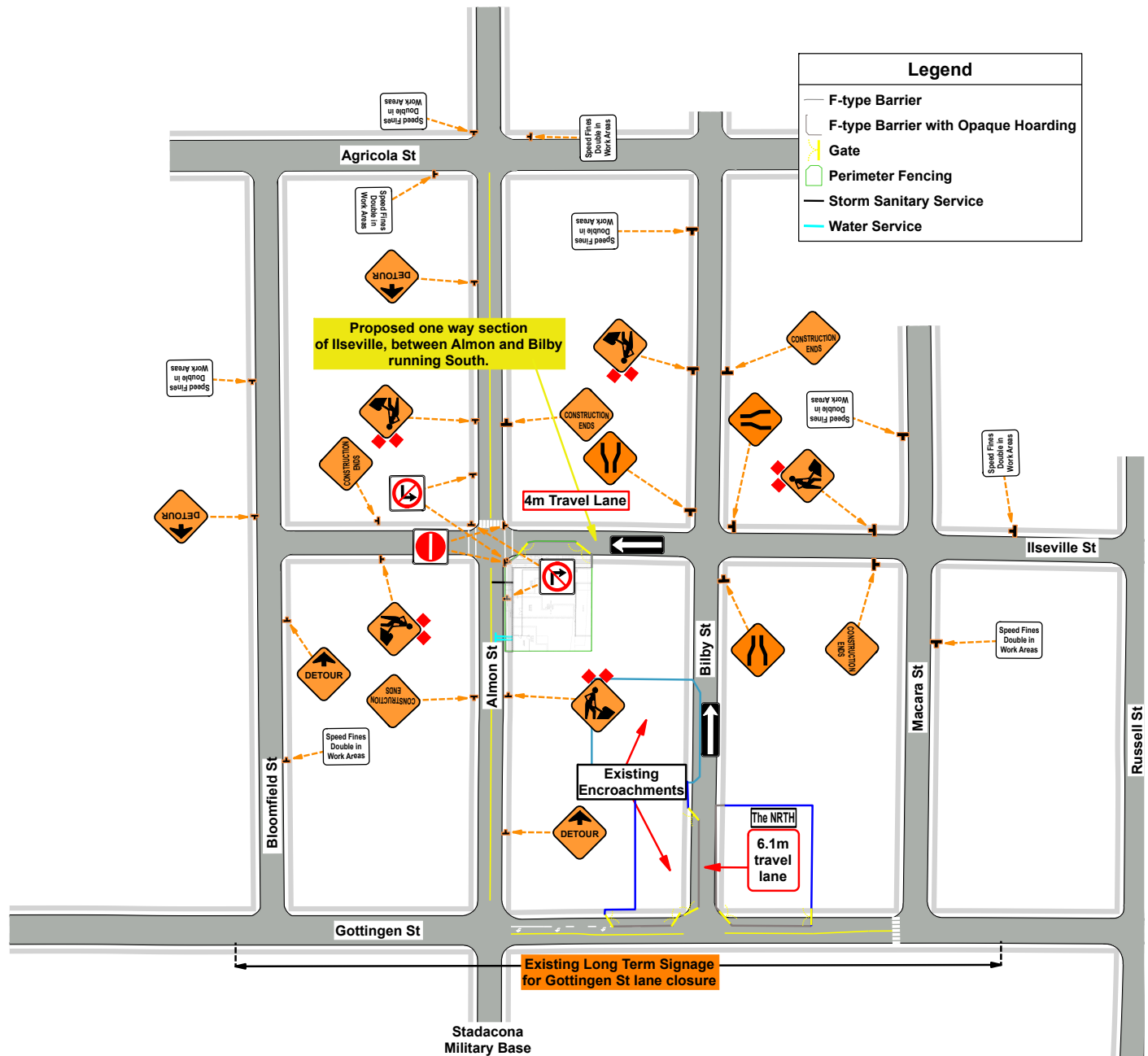
# Encroachment Signage Plan



Date: 2022-04-20 Author: Norman Bussmann, TWS, Frontline Traffic Services, 902-817-3364 Project: 5543-55 Almon St  
 Contrator: SDMM Contact: Geoff MacLean, 902-789-6374

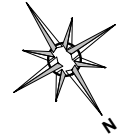
**Comments:**

Not to Scale  
 Encroachment Signage Plan  
 Application Guide is C22  
 See Pedestrian Management Plan for sidewalk closure details



V	Speed Zone, km/h	50	60-70	80-90
A	Sign Spacing (m)	50	100	150
L	Transition Taper (m)	30	60	120
L/2	Termination Taper (m)	15	30	60
D	Delineator Spacing (m)	5	5	10
B	Buffer Area	Note 2	Note 2	30m

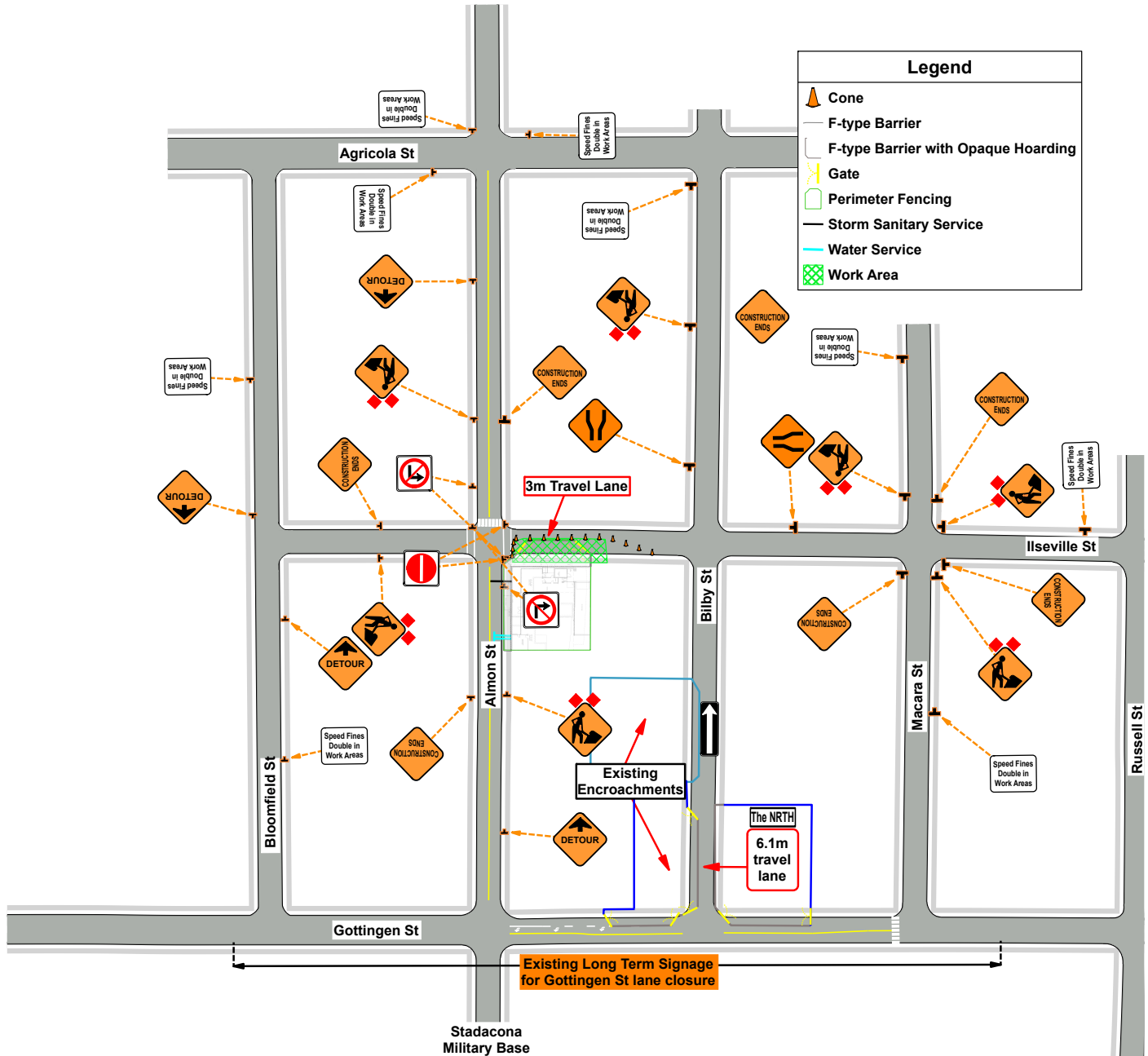
# Barrier Adjustment and Removal Plan



Date: 2023-01-24 Author: Norman Bussmann, TWS, Frontline Traffic Services, 902-817-3364 Project: 5543-55 Almon St  
 Contrator: SDMM Contact: Geoff MacLean, 902-789-6374

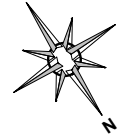
**Comments:**

Not to Scale  
 Barrier Adjustment and Removal Plan  
 Application Guides are C22 and C114  
 See Pedestrian Management Plan for sidewalk closure details



V	Speed Zone, km/h	50	60-70	80-90
A	Sign Spacing (m)	50	100	150
L	Transition Taper (m)	30	60	120
L/2	Termination Taper (m)	15	30	60
D	Delineator Spacing (m)	5	5	10
B	Buffer Area	Note 2	Note 2	30m

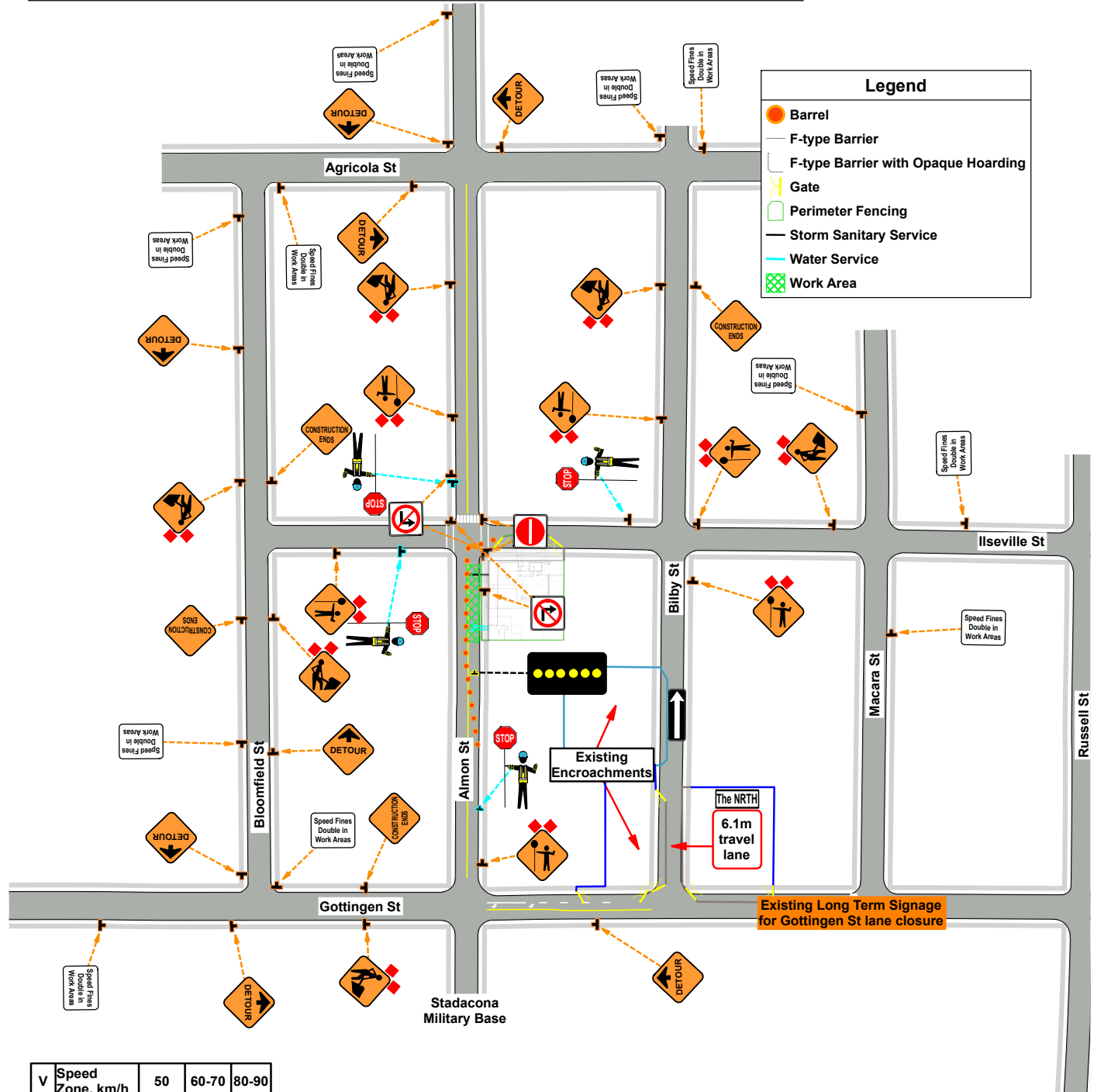
# Service Laterals Installation Plan



Date: 2023-01-24 Author: Norman Bussmann, TWS, Frontline Traffic Services, 902-817-3364 Project: 5543-55 Almon St  
 Contractor: SDMM Contact: Geoff MacLean, 902-789-6374

**Comments:**

Not to Scale  
 Application Guides C112, C114  
 Service Laterals Installation Plan  
 See Pedestrian Management Plan for sidewalk closure details



V	Speed Zone, km/h	50	60-70	80-90
A	Sign Spacing (m)	50	100	150
L	Transition Taper (m)	30	60	120
L/2	Termination Taper (m)	15	30	60
D	Delineator Spacing (m)	5	5	10
B	Buffer Area	Note 2	Note 2	30m

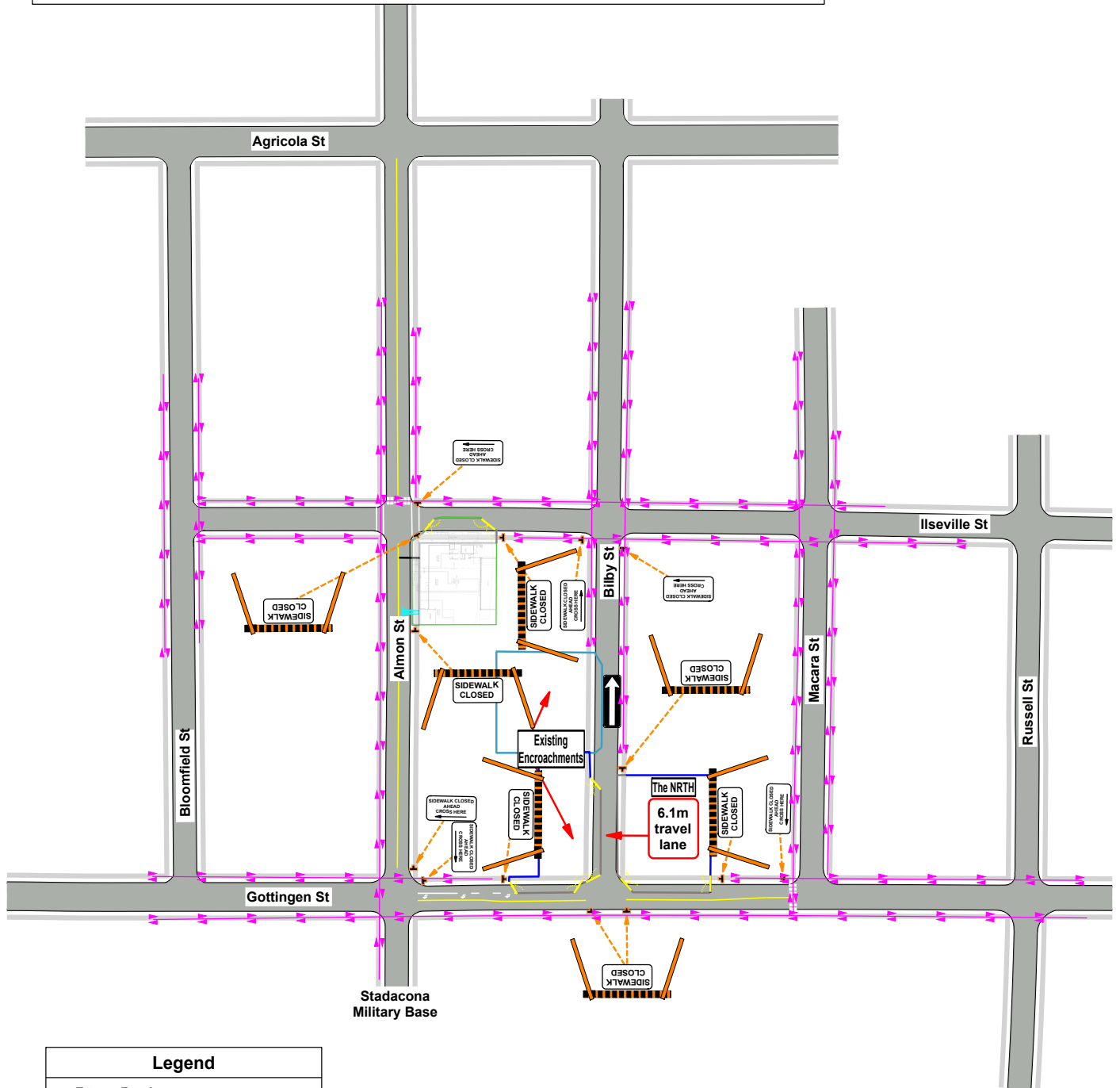
# Pedestrian Management Plan



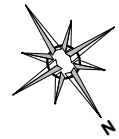
Date: 2023-01-24 Author: Norman Busmann, TWS, Frontline Traffic Services, 902-817-3364 Project: 5543-55 Almon St  
 Contrator: SDMM Contact: Geoff MacLean,902-789-6374

**Comments:**

Not to Scale  
 Pedestrian Management Plan  
 Plan shows how pedestrians will move around the various encroachments in the area  
 Plan shows all required signage for all local sites



Legend	
	F-type Barrier
	F-type Barrier with Opaque Hoarding
	Gate
	Pedestrian Route
	Perimeter Fencing
	Storm Sanitary Service
	Water Service

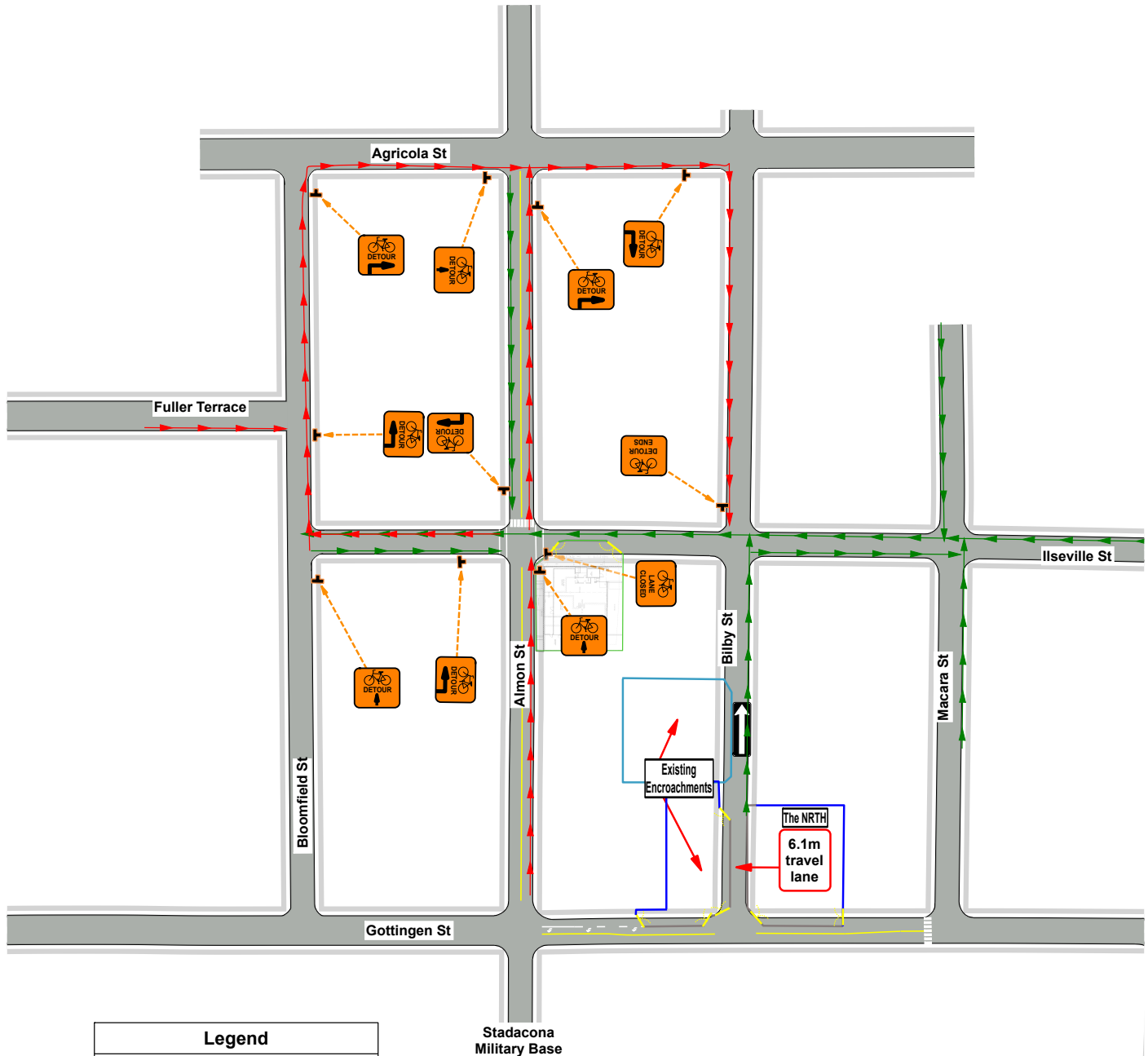


# Bicycle Detour Plan

Date: 2023-01-24 Author: Norman Bussmann, TWS, Frontline Traffic Services, 902-817-3364 Project: 5543-55 Almon St  
 Contrator: SDMM Contact: Geoff MacLean,902-789-6374

**Comments:**

Not to Scale  
 Bicycle Detour Plan  
 Southbound bike lane will remain open  
 Northbound bike lane closed between Almon and Bilby



Legend	
	Bike Detour Route
	F-type Barrier
	F-type Barrier with Opaque Hoarding
	Gate
	Perimeter Fencing
	Southbound Bike Route Unchanged

# Haul Route Plan



Date: 2023-01-24 Author: Norman Bussmann, TWS, Frontline Traffic Services, 902-817-3364 Project: 5543-55 Almon St  
 Contrator: SDMM Contact: Geoff MacLean,902-789-6374

Comments:  
 Not to Scale  
 Haul Route Plan  
 Inbound via Robie St to Young St to Isleville St to Site  
 Outbound via Almon St to Robie St

**Legend**

- Haul Route Inbound
- Haul Route Outbound

