








**TIMBERLEA/LAKESIDE/
BEECHVILLE
MUNICIPAL PLANNING
STRATEGY**

**Map 1
Generalized Future
Land Use**

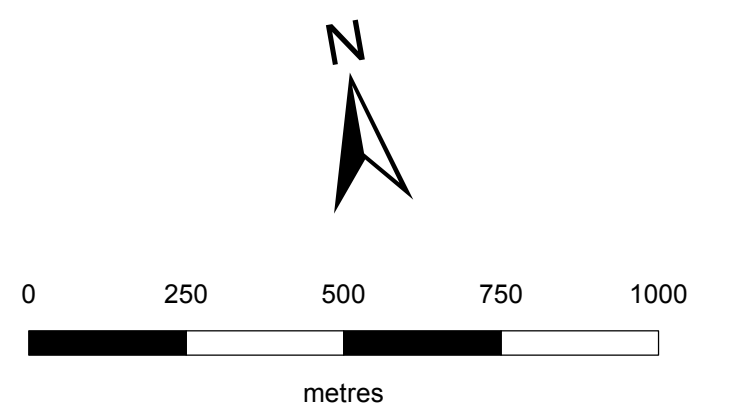
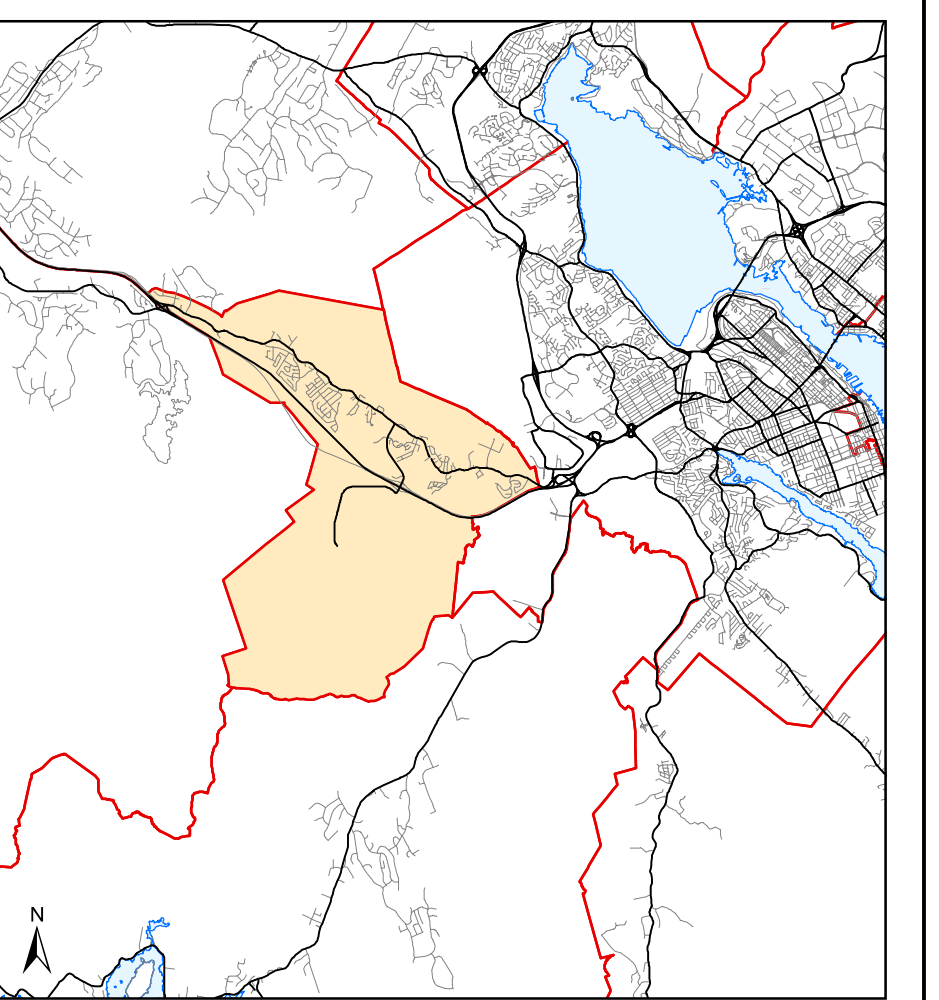
Designation

	UR Urban Residential
	CC Commercial Core
	GC General Commercial
	IND Industrial
	MR Mixed Resource
	WC Western Common
	CNS Conservation

The complete package of zoning regulations varies for each community planning area. Reference to the complete package, together with the full text of the land use by-law, must be made in order to determine the permitted land uses and requirements for any land in HRM. Complete information for each land use by-law is available from HRM Planning Services.

These documents are copyrighted to Halifax Regional Municipality and may not be copied for the purpose of resale.

Key Map



Prepared by Halifax Regional Municipality
 Amended: 17 April 2010
 Updated: 17 March 2014
 file: T:\work\planning\plan Documents\TLB
 \TimberleaLakesideBeechville_MPS_Map1GFLUM.pdf
 Note: Halifax Regional Municipality does not guarantee the accuracy of any representation on this plan.
 Date of map does not indicate date of data creation.

