

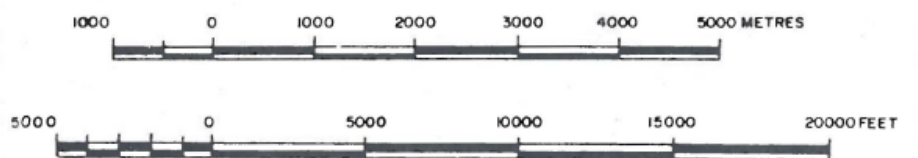
# Municipal Planning Strategy

Planning District 5  
(Chebucto Peninsula)

## MAP 3 COMMUNITY FEATURES

- |  |                                      |
|--|--------------------------------------|
|  | SCHOOL                               |
|  | CHURCH                               |
|  | POST OFFICE                          |
|  | FIRE STATION - SUBSTATION            |
|  | LIGHTHOUSE - SIGNAL TOWER            |
|  | RECREATION - OPEN SPACE              |
|  | COMMUNITY HALL OR CLUB               |
|  | CEMETERY                             |
|  | FLINTSTONE AIRSTRIP                  |
|  | SMALL CRAFT HARBOUR                  |
|  | SENIOR CITIZEN HOUSING               |
|  | FORT - ABANDONED MILITARY STRUCTURES |
|  | TELECOMMUNICATION FACILITY           |

SCALE 1:50000



MUNICIPALITY OF THE COUNTY OF HALIFAX  
DEPARTMENT OF PLANNING AND DEVELOPMENT  
POLICY DIVISION

- |  |                             |  |   |
|--|-----------------------------|--|---|
|  | FISHING BERTH               |  | PLANNING DISTRICT 5 (CHEBUCTO PENINSULA) BOUNDARY |
|  | FISHING BERTH - SALMON ALSO |  | DISTRICT 4/DISTRICT 5 POLITICAL BOUNDARY          |
|  | FISHING BERTH - SALMON ONLY |  | LONG LAKE PROVINCIAL PARK BOUNDARY                |