

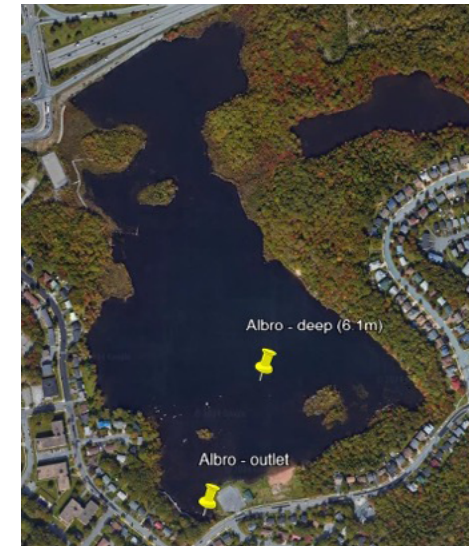
Albro Lake, Dartmouth, Nova Scotia

SPRING AND SUMMER 2022 – 2023 WATER QUALITY DATA

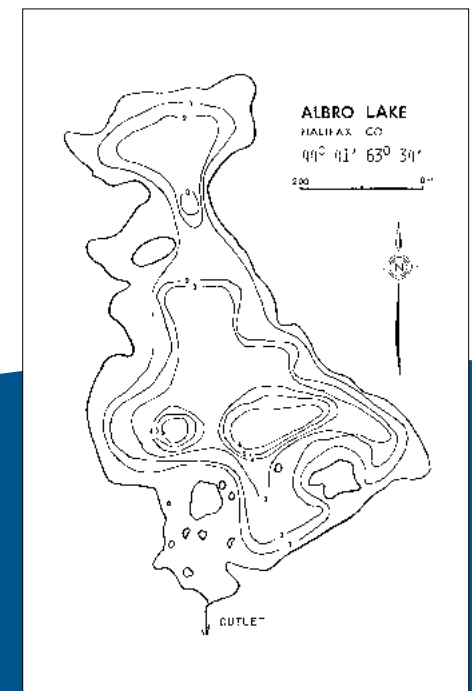
| Parameter | Spring 2022 5/12/2022 | Summer 2022 8/22/2022 | Spring 2023 4/21/2023 | Summer 2023 8/23/2023 | CCME FWAL Guideline |
|---|--------------------------|--------------------------|--------------------------|--------------------------|---|
| Sampling Team | Consultants | Consultants | Consultants | Community-led | n/a |
| pH | 7.86 | 8.52 | 6.60 | 7.21 | 6.5 to 9.0 |
| Dissolved Oxygen at Surface | 10.17 mg/L | 8.94 mg/L | 11.09 mg/L | 7.82 mg/L | Early life stages: >9.5 mg/L Other life stages >6.5 mg/L |
| Dissolved Chloride at Surface (Outlet) | 110 mg/L | 110 mg/L | 100 mg/L | 81 mg/L | Long-Term Exposure: >120 mg/L |
| Dissolved Chloride at Depth | 110 mg/L | 110 mg/L | 100 mg/L | 86 mg/L | Long-Term Exposure: >120 mg/L |
| Total Phosphorus at Surface | 3.20 µg/L | ND | 2.70 µg/L | 2.60 µg/L | *See Table 5 |
| Total Phosphorus at Depth | 3.9 µg/L | 12.0 µg/L | 3.5 µg/L | 1.2 µg/L | *See Table 5 |
| Chlorophyll- a at Surface | 1.65 µg/L | 1.78 µg/L | 5.19 µg/L | 4.47 µg/L | *See Table 5 |
| E. coli at Surface (CFU/100ml) | ND | 36 | 6 | 56 | ≥ 235 CFU/100ml |

*Table 5 of the State of the Lakes report provides estimated Trophic States of lakes based on the CCME P Framework and the NALMS chlorophyll-a Framework

halifax.ca/lakewatchers



Satellite Imagery Map of Albro Lake
w/ Sampling Locations



Bathymetry Map of Albro Lake



Albert Bridge Lake, Seabright, Nova Scotia

SPRING AND SUMMER 2022 – 2023 WATER QUALITY DATA

| Parameter | Spring 2022 5/12/2022 | Summer 2022 8/22/2022 | Spring 2023 4/21/2023 | Summer 2023 8/23/2023 | CCME FWAL Guideline |
|---|--------------------------|--------------------------|--------------------------|--------------------------|---|
| Sampling Team | Consultants | Consultants | Consultants | Consultants | n/a |
| pH | 6.19 | 6.24 | 5.57 | 4.96 | 6.5 to 9.0 |
| Dissolved Oxygen at Surface | 9.52 mg/L | 8.19 mg/L | 10.36 mg/L | 7.80 mg/L | Early life stages: >9.5 mg/L Other life stages >6.5 mg/L |
| Dissolved Chloride at Surface (Outlet) | 8.6 mg/L | 10.0 mg/L | 8.3 mg/L | 8.3 mg/L | Long-Term Exposure: >120 mg/L |
| Dissolved Chloride at Depth | 8.7 mg/L | 9.8 mg/L | 8.7 mg/L | 8.2 mg/L | Long-Term Exposure: >120 mg/L |
| Total Phosphorus at Surface | 7.40 µg/L | 6.60 | 8.30 µg/L | 11.0 µg/L | *See Table 5 |
| Total Phosphorus at Depth | 7.9 µg/L | 150.0 µg/L | 12.0 µg/L | 16.0 µg/L | *See Table 5 |
| Chlorophyll- a at Surface | 2.68 µg/L | 5.30 µg/L | 1.93 µg/L | 1.10 µg/L | *See Table 5 |
| E. coli at Surface (CFU/100ml) | ND | ND | ND | 10 | ≥ 235 CFU/100ml |

*Table 5 of the State of the Lakes report provides estimated Trophic States of lakes based on the CCME P Framework and the NALMS chlorophyll-a Framework



Satellite Imagery Map of Albert Bridge Lake w/ Sampling Locations



Bathymetry Map of Albert Bridge Lake

halifax.ca/lakewatchers



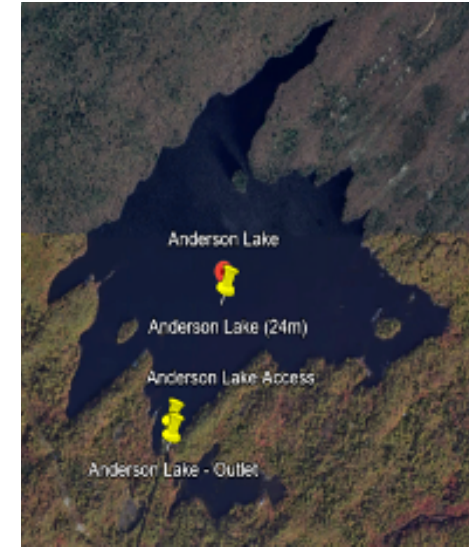
Anderson Lake, Burnside, Nova Scotia

SPRING AND SUMMER 2022 – 2023 WATER QUALITY DATA

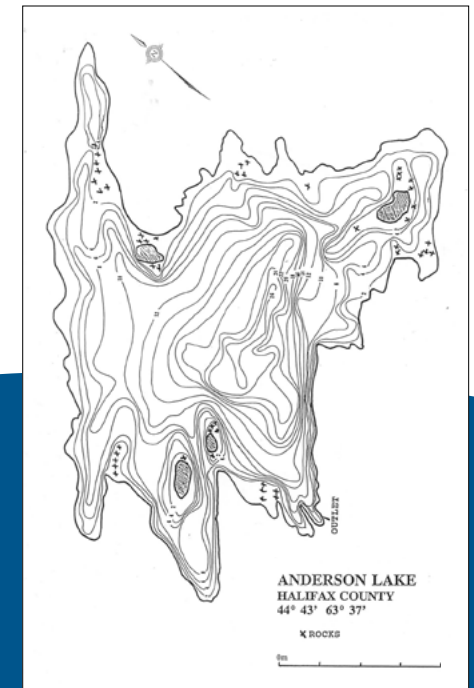
| Parameter | Spring 2022 12/5/2022 | Summer 2022 16/8/2022 | Spring 2023 24/4/2023 | Summer 2023 10/8/2023 | CCME FWAL Guideline |
|---|--------------------------|--------------------------|--------------------------|--------------------------|---|
| Sampling Team | Consultants | Consultants | Consultants | Consultants | n/a |
| pH | 5.81 | 8.05 | 6.36 | 6.48 | 6.5 to 9.0 |
| Dissolved Oxygen at Surface (mg/l) | 10.43 | 8.66 | 11.66 | 7.73 | Early life stages: >9.5 mg/L Other life stages >6.5 mg/L |
| Dissolved Chloride at Surface (Outlet) (mg/l) | 9.2 | 11.0 | 10.0 | 7.3 | Long-Term Exposure: >120 mg/L |
| Dissolved Chloride at Depth (mg/l) | 9.7 | 11.0 | 11.0 | 11.0 | Long-Term Exposure: >120 mg/L |
| Total Phosphorus at Surface (µg/l) | 5.1 | ND | 4.1 | 3.4 | *See Table 5 |
| Total Phosphorus at Depth (µg/l) | 3.8 | 2.0 | 2.2 | 5.8 | *See Table 5 |
| Chlorophyll - a at Surface (µg/L) | 0.95 | 3.25 | 3.66 | 9.23 | *See Table 5 |
| E. coli at Surface (CFU/100ml) | ND | 2.0 | ND | 16.0 | ≥ 235 CFU/100ml |

*Table 5 of the State of the Lakes report provides estimated Trophic States of lakes based on the CCME P Framework and the NALMS Chlorophyll-a Framework

halifax.ca/lakewatchers



Satellite Imagery Map of Anderson Lake w/ Sampling Locations



Bathymetry Map of Anderson Lake

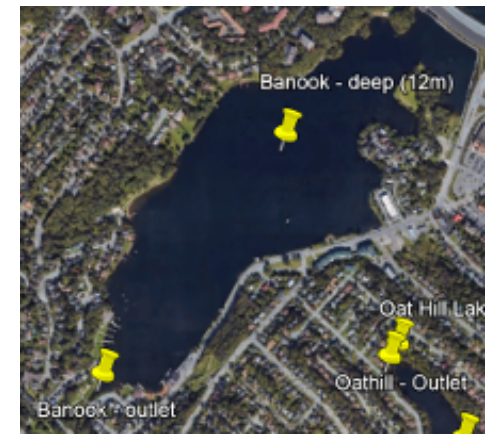
Lake Banook, Dartmouth, Nova Scotia

SPRING AND SUMMER 2022 – 2023 WATER QUALITY DATA

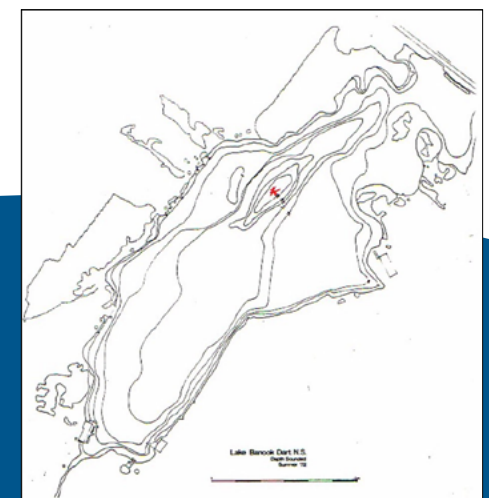
| Parameter | Spring 2022 4/27/2022 | Summer 2022 8/16/2022 | Spring 2023 4/18/2023 | Summer 2023 8/14/2023 | CCME FWAL Guideline |
|---|--------------------------|--------------------------|--------------------------|--------------------------|---|
| Sampling Team | Consultants | Collaborative | Collaborative | Collaborative | n/a |
| pH | 8.06 | 7.96 | 7.99 | 7.50 | 6.5 to 9.0 |
| Dissolved Oxygen at Surface (mg/l) | 10.15 | 8.69 | 11.91 | 7.01 | Early life stages: >9.5 mg/L Other life stages >6.5 mg/L |
| Dissolved Chloride at Surface (Outlet) (mg/l) | 240 | 230 | 180 | 130 | Long-Term Exposure: >120 mg/L |
| Dissolved Chloride at Depth (Outlet) (mg/l) | 240 | 240 | 180 | 200 | Long-Term Exposure: >120 mg/L |
| Total Phosphorus at Surface (µg/l) | 2.40 | ND | 1.80 | 3.40 | *See Table 5 |
| Total Phosphorus at Depth (µg/l) | 4.2 | 110.0 | 1.8 | 300.0 | *See Table 5 |
| Chlorophyll - a at Surface (µg/L) | 3.54 | 5.97 | 0.75 | 0.41 | *See Table 5 |
| E. coli at Surface (CFU/100ml) | 10 | 46 | ND | 22 | ≥ 235 CFU/100ml |

*Table 5 of the State of the Lakes report provides estimated Trophic States of lakes based on the CCME P Framework and the NALMS chlorophyll-a Framework

halifax.ca/lakewatchers



Satellite Imagery Map of Lake Banook w/ Sampling Locations



Bathymetry Map of Lake Banook

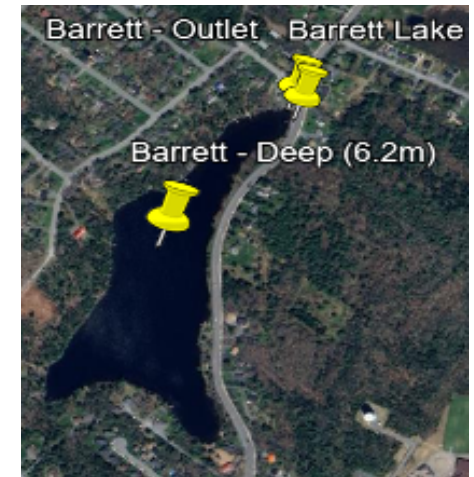
Barrett Lake, Beaver Bank, Nova Scotia

SPRING AND SUMMER 2022 – 2023 WATER QUALITY DATA

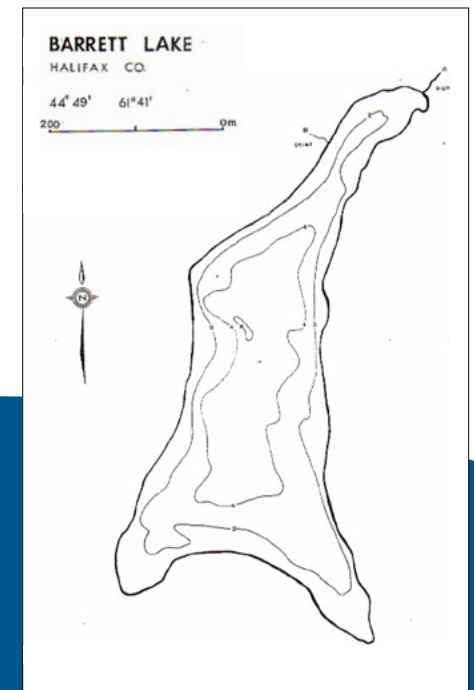
| Parameter | Spring 2022 5/5/2022 | Summer 2022 8/24/2022 | Spring 2023 4/25/2023 | Summer 2023 8/16/2023 | CCME FWAL Guideline |
|---|-------------------------|--------------------------|--------------------------|--------------------------|---|
| Sampling Team | Consultants | Consultants | Consultants | Volunteers | n/a |
| pH | 6.93 | 7.18 | 6.93 | 7.08 | 6.5 to 9.0 |
| Dissolved Oxygen at Surface (mg/l) | 14.47 | 8.23 | 10.94 | 7.56 | Early life stages: >9.5 mg/L Other life stages >6.5 mg/L |
| Dissolved Chloride at Surface (Outlet) (mg/l) | 64 | 67 | 59 | 32 | Long-Term Exposure: >120 mg/L |
| Dissolved Chloride at Depth (mg/l) | 71 | 73 | 58 | 51 | Long-Term Exposure: >120 mg/L |
| Total Phosphorus at Surface (µg/l) | 3.2 | 2.2 | 3.5 | 10.0 | *See Table 5 |
| Total Phosphorus at Depth (µg/l) | 5.0 | 7.6 | 5.5 | 13.0 | *See Table 5 |
| Chlorophyll - a at Surface (µg/L) | 3.94 | 2.35 | 1.97 | 3.23 | *See Table 5 |
| E. coli at Surface (CFU/100ml) | 2.0 | 2.0 | ND | 4.0 | ≥ 235 CFU/100ml |

*Table 5 of the State of the Lakes report provides estimated Trophic States of lakes based on the CCME P Framework and the NALMS chlorophyll-a Framework

halifax.ca/lakewatchers



Satellite Imagery Map of Barrett Lake w/ Sampling Locations



Bathymetry Map of Barrett Lake

Bayers Lake, Halifax, Nova Scotia

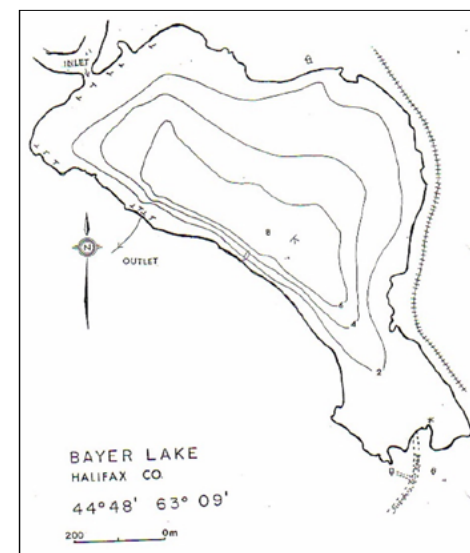
SPRING AND SUMMER 2022 – 2023 WATER QUALITY DATA

| Parameter | Spring 2022 5/25/2022 | Summer 2022 8/26/2022 | Spring 2023 4/21/2023 | Summer 2023 8/11/2023 | CCME FWAL Guideline |
|---|--------------------------|--------------------------|--------------------------|--------------------------|---|
| Sampling Team | Consultants | Consultants | Consultants | Consultants | n/a |
| pH | 6.12 | 6.19 | 6.01 | 6.59 | 6.5 to 9.0 |
| Dissolved Oxygen at Surface (mg/l) | 10.07 | 7.90 | 10.53 | 8.00 | Early life stages: >9.5 mg/L Other life stages >6.5 mg/L |
| Dissolved Chloride at Surface (Outlet) (mg/l) | 180 | 170 | 170 | 71 | Long-Term Exposure: >120 mg/L |
| Dissolved Chloride at Depth (mg/l) | 190 | 170 | 170 | 76 | Long-Term Exposure: >120 mg/L |
| Total Phosphorus at Surface (µg/l) | 1.9 | 1.7 | 2.1 | 2.7 | *See Table 5 |
| Total Phosphorus at Depth (µg/l) | 3.3 | 3.9 | 3.2 | 3.0 | *See Table 5 |
| Chlorophyll - a at Surface (µg/L) | 0.482 | 1.04 | 0.34 | 1.27 | *See Table 5 |
| E. coli at Surface (CFU/100ml) | 12 | 78 | 4 | 190 | ≥ 235 CFU/100ml |

*Table 5 of the State of the Lakes report provides estimated Trophic States of lakes based on the CCME P Framework and the NALMS Chlorophyll-a Framework



Satellite Imagery Map of Bayers Lake w/ Sampling Locations



Bathymetry Map of Bayers Lake

halifax.ca/lakewatchers

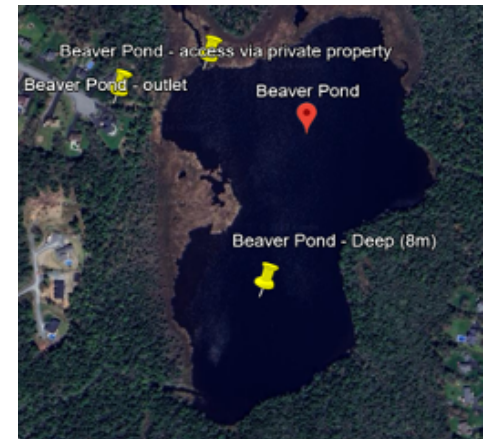
Beaver Pond, Windsor Junction, Nova Scotia

SPRING AND SUMMER 2022 – 2023 WATER QUALITY DATA

| Parameter | Spring 2022 5/9/2022 | Summer 2022 8/26/2022 | Spring 2023 4/26/2023 | Summer 2023 8/16/2023 | CCME FWAL Guideline |
|---|-------------------------|--------------------------|--------------------------|--------------------------|---|
| Sampling Team | Consultants | Consultants | Consultants | Consultants | n/a |
| pH | 8.34 | 7.07 | 6.63 | 6.78 | 6.5 to 9.0 |
| Dissolved Oxygen at Surface (mg/l) | 9.93 | 8.14 | 11.26 | 8.78 | Early life stages: >9.5 mg/L Other life stages >6.5 mg/L |
| Dissolved Chloride at Surface (Outlet) (mg/l) | 44.0 | 44.0 | 45.0 | 7.3 | Long-Term Exposure: >120 mg/L |
| Dissolved Chloride at Depth (mg/l) | 44.0 | 46.0 | 46.0 | 8.8 | Long-Term Exposure: >120 mg/L |
| Total Phosphorus at Surface (µg/l) | 7.60 | 6.60 | 3.90 | 12.0 | *See Table 5 |
| Total Phosphorus at Depth (µg/l) | 12.0 | 16.0 | 10.0 | 7.6 | *See Table 5 |
| Chlorophyll - a at Surface (µg/L) | 2.28 | 5.34 | 2.95 | 10.1 | *See Table 5 |
| E. coli at Surface (CFU/100ml) | ND | 2.0 | ND | 4.0 | ≥ 235 CFU/100ml |

*Table 5 of the State of the Lakes report provides estimated Trophic States of lakes based on the CCME P Framework and the NALMS chlorophyll-a Framework

halifax.ca/lakewatchers



Satellite Imagery Map of Beaver Pond w/ Sampling Locations



Bathymetry Map of Beaver Pond

Beaver Bank Lake, Middle Beaver Bank, Nova Scotia

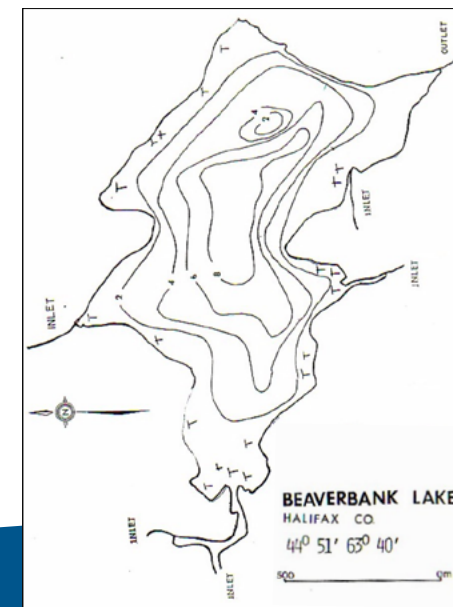
SPRING AND SUMMER 2022 – 2023 WATER QUALITY DATA

| Parameter | Spring 2022 5/9/2022 | Summer 2022 8/24/2022 | Spring 2023 4/25/2023 | Summer 2023 8/16/2023 | CCME FWAL Guideline |
|---|-------------------------|--------------------------|--------------------------|--------------------------|---|
| Sampling Team | Consultants | Consultants | Consultants | Consultants | n/a |
| pH | 7.26 | 7.42 | 6.80 | 6.34 | 6.5 to 9.0 |
| Dissolved Oxygen at Surface (mg/l) | 9.98 | 8.71 | 10.87 | 8.09 | Early life stages: >9.5 mg/L Other life stages >6.5 mg/L |
| Dissolved Chloride at Surface (Outlet) (mg/l) | 8.1 | 8.2 | 8.9 | 2.7 | Long-Term Exposure: >120 mg/L |
| Dissolved Chloride at Depth (mg/l) | 8.2 | 8.5 | 9.0 | 5.2 | Long-Term Exposure: >120 mg/L |
| Total Phosphorus at Surface (µg/l) | 8.7 | 1.9 | 5.9 | ND | *See Table 5 |
| Total Phosphorus at Depth (µg/l) | 6.7 | 8.6 | 4.6 | 18.0 | *See Table 5 |
| Chlorophyll - a at Surface (µg/L) | 3.83 | 4.17 | 3.34 | 4.10 | *See Table 5 |
| E. coli at Surface (CFU/100ml) | 2.0 | 2.0 | ND | 2.0 | ≥ 235 CFU/100ml |

*Table 5 of the State of the Lakes report provides estimated Trophic States of lakes based on the CCME P Framework and the NALMS chlorophyll-a Framework



Satellite Imagery Map of Beaver Bank Lake w/ Sampling Locations



Bathymetry Map of Beaver Bank Lake

halifax.ca/lakewatchers

Bell Lake, Dartmouth, Nova Scotia

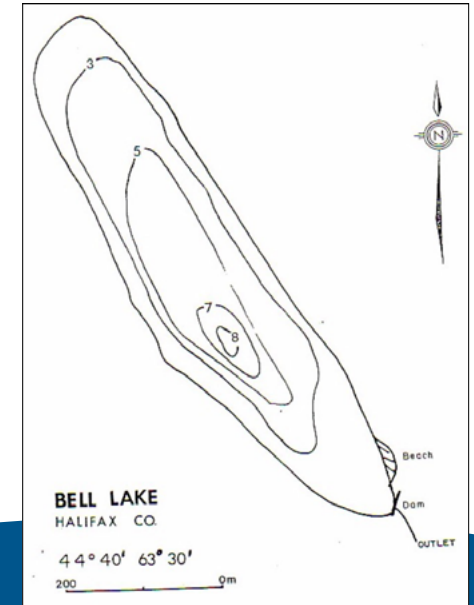
SPRING AND SUMMER 2022 – 2023 WATER QUALITY DATA

| Parameter | Spring 2022 6/5/2022 | Summer 2022 15/8/2022 | Spring 2023 17/4/2023 | Summer 2023 4/8/2023 | CCME FWAL Guideline |
|---|-------------------------|--------------------------|--------------------------|-------------------------|---|
| Sampling Team | Consultants | Consultants | Consultants | Volunteers | n/a |
| pH | 7.74 | 6.80 | 7.50 | 6.80 | 6.5 to 9.0 |
| Dissolved Oxygen at Surface (mg/l) | 10.66 | 7.85 | 11.54 | 7.08 | Early life stages: >9.5 mg/L Other life stages >6.5 mg/L |
| Dissolved Chloride at Surface (Outlet) (mg/l) | 12 | 11 | 10 | 11 | Long-Term Exposure: >120 mg/L |
| Dissolved Chloride at Depth (mg/l) | 11 | 11 | 10 | 11 | Long-Term Exposure: >120 mg/L |
| Total Phosphorus at Surface (µg/l) | 3.5 | ND | 2.4 | 5.5 | *See Table 5 |
| Total Phosphorus at Depth (µg/l) | 2.8 | 9.9 | 2.7 | 5.8 | *See Table 5 |
| Chlorophyll - a at Surface (µg/L) | 0.85 | 4.75 | 1.78 | 2.58 | *See Table 5 |
| E. coli at Surface (CFU/100ml) | 2.0 | 48.0 | ND | 6.0 | ≥ 235 CFU/100ml |

*Table 5 of the State of the Lakes report provides estimated Trophic States of lakes based on the CCME P Framework and the NALMS Chlorophyll-a Framework



Satellite Imagery Map of Bell Lake w/ Sampling Locations



Bathymetry Map of Bell Lake

halifax.ca/lakewatchers



Big Cranberry Lake, Halifax, Nova Scotia

SPRING AND SUMMER 2022 – 2023 WATER QUALITY DATA

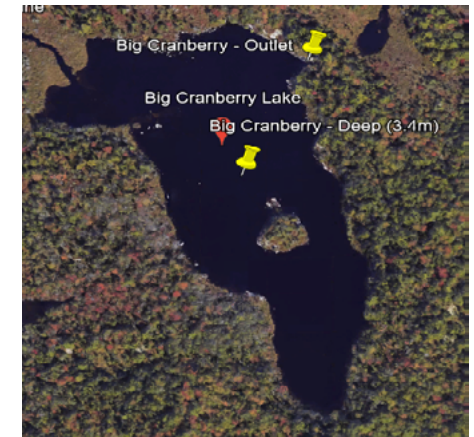
| Parameter | Spring 2022 5/11/2022 | Summer 2022 8/22/2022 | Spring 2023 5/4/2023 | Summer 2023 8/16/2023 | CCME FWAL Guideline |
|---|--------------------------|--------------------------|-------------------------|--------------------------|---|
| Sampling Team | Consultants | Consultants | Consultants | Consultants | n/a |
| pH | 4.98 | 6.0 | 4.41 | 4.55 | 6.5 to 9.0 |
| Dissolved Oxygen at Surface (mg/l) | 10.44 | 8.01 | 10.13 | 6.36 | Early life stages: >9.5 mg/L Other life stages >6.5 mg/L |
| Dissolved Chloride at Surface (Outlet) (mg/l) | 3.4 | 4.1 | 3.8 | 14.0 | Long-Term Exposure: >120 mg/L |
| Dissolved Chloride at Depth (mg/l) | 3.5 | 4.5 | 3.8 | 37.0 | Long-Term Exposure: >120 mg/L |
| Total Phosphorus at Surface (µg/l) | 5.40 | ND | ND | 14.0 | *See Table 5 |
| Total Phosphorus at Depth (µg/l) | ND | ND | ND | 22 | *See Table 5 |
| Chlorophyll - a at Surface (µg/L) | 1.21 | 4.18 | 0.69 | 9.86 | *See Table 5 |
| E. coli at Surface (CFU/100ml) | ND | 2.0 | ND | 10.0 | ≥ 235 CFU/100ml |

*Table 5 of the State of the Lakes report provides estimated Trophic States of lakes based on the CCME P Framework and the NALMS chlorophyll-a Framework

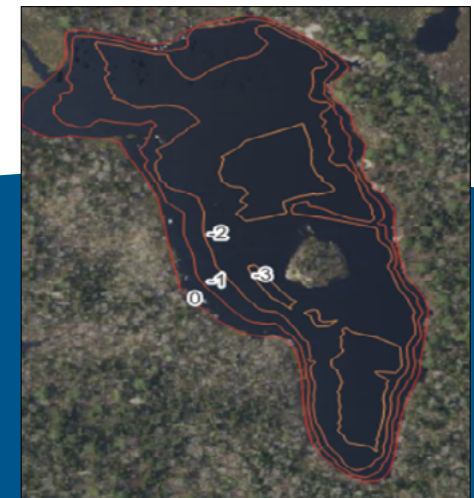
halifax.ca/lakewatchers

HalifACT Acting on
Climate
Together

LakeWatchers



Satellite Imagery Map of Big Cranberry Lake w/ Sampling Locations



Bathymetry Map of Big Cranberry Lake



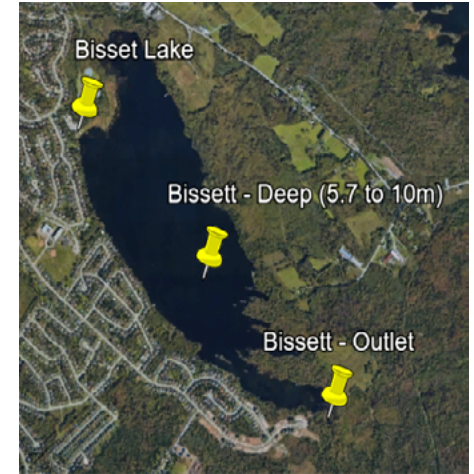
Bissett Lake, Cole Harbour, Nova Scotia

SPRING AND SUMMER 2022 – 2023 WATER QUALITY DATA

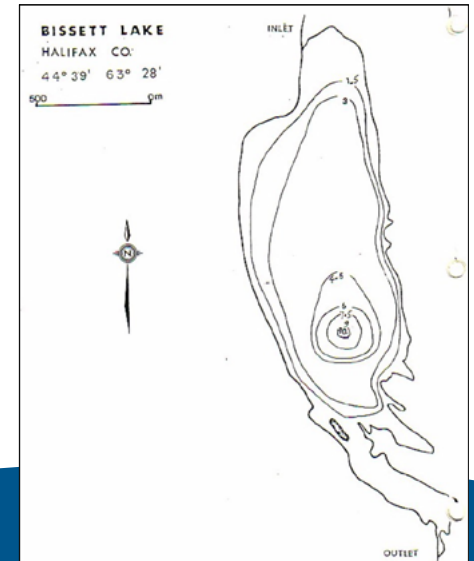
| Parameter | Spring 2022 5/5/2022 | Summer 2022 8/25/2022 | Spring 2023 4/27/2023 | Summer 2023 8/17/2023 | CCME FWAL Guideline |
|---|-------------------------|--------------------------|--------------------------|--------------------------|---|
| Sampling Team | Consultants | Collaborative | Collaborative | Volunteers | n/a |
| pH | 7.47 | 7.76 | 6.66 | 7.62 | 6.5 to 9.0 |
| Dissolved Oxygen at Surface (mg/l) | 14.42 | 8.45 | 11.03 | 8.30 | Early life stages: >9.5 mg/L Other life stages >6.5 mg/L |
| Dissolved Chloride at Surface (Outlet) (mg/l) | 130 | 110 | 150 | 65 | Long-Term Exposure: >120 mg/L |
| Dissolved Chloride at Depth (mg/l) | 140 | 110 | 150 | 100 | Long-Term Exposure: >120 mg/L |
| Total Phosphorus at Surface (µg/l) | 7.1 | 16.0 | 7.5 | 15.0 | *See Table 5 |
| Total Phosphorus at Depth (µg/l) | 9.5 | 19.0 | 6.1 | 37.0 | *See Table 5 |
| Chlorophyll - a at Surface (µg/L) | 1.29 | 2.17 | 0.13 | 6.54 | *See Table 5 |
| E. coli at Surface (CFU/100ml) | ND | ND | ND | 6.0 | ≥ 235 CFU/100ml |

*Table 5 of the State of the Lakes report provides estimated Trophic States of lakes based on the CCME P Framework and the NALMS Chlorophyll-a Framework

halifax.ca/lakewatchers



Satellite Imagery Map of Bissett Lake w/ Sampling Locations



Bathymetry Map of Bissett Lake



Black Point Lake, Hubley, Nova Scotia

SPRING AND SUMMER 2022 – 2023 WATER QUALITY DATA

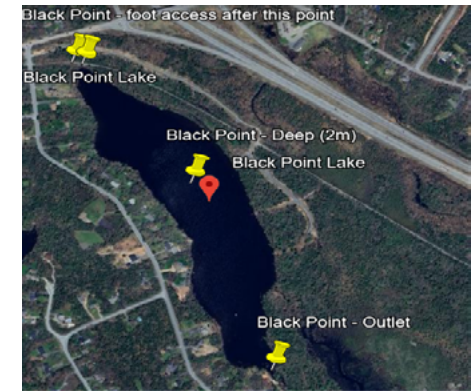
| Parameter | Spring 2022 5/13/2022 | Summer 2022 8/16/2022 | Spring 2023 4/17/2023 | Summer 2023 8/14/2023 | CCME FWAL Guideline |
|---|--------------------------|--------------------------|--------------------------|--------------------------|---|
| Sampling Team | Consultants | Consultants | Consultants | Collaborative | n/a |
| pH | 5.96 | 5.95 | 5.51 | 5.63 | 6.5 to 9.0 |
| Dissolved Oxygen at Surface (mg/l) | 10.04 | 7.70 | 10.00 | 6.81 | Early life stages: >9.5 mg/L Other life stages >6.5 mg/L |
| Dissolved Chloride at Surface (Outlet) (mg/l) | 28.0 | 27.0 | 26.0 | 11.0 | Long-Term Exposure: >120 mg/L |
| Dissolved Chloride at Depth (mg/l) | 28.0 | 29.0 | 27.0 | 11.0 | Long-Term Exposure: >120 mg/L |
| Total Phosphorus at Surface (µg/l) | 18.0 | 12.0 | 6.5 | 23.0 | *See Table 5 |
| Total Phosphorus at Depth (µg/l) | 7.2 | 13.0 | 8.1 | ND | *See Table 5 |
| Chlorophyll - a at Surface (µg/L) | 0.75 | 3.94 | 1.28 | 7.16 | *See Table 5 |
| E. coli at Surface (CFU/100ml) | ND | 4.0 | ND | 10.0 | ≥ 235 CFU/100ml |

*Table 5 of the State of the Lakes report provides estimated Trophic States of lakes based on the CCME P Framework and the NALMS Chlorophyll-a Framework

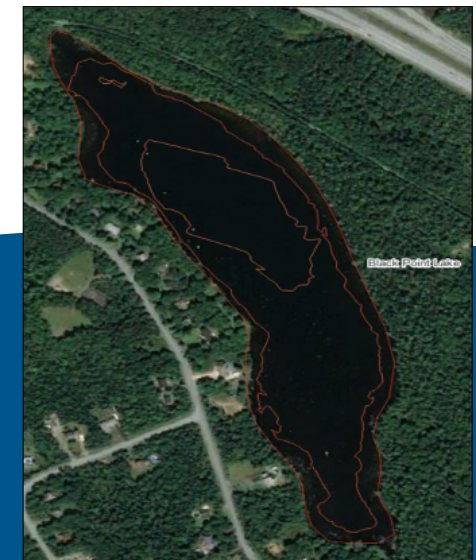
halifax.ca/lakewatchers

HalifACT Acting on
Climate
Together

LakeWatchers



Satellite Imagery Map of Black Point Lake w/ Sampling Locations



Bathymetry Map of Black Point Lake

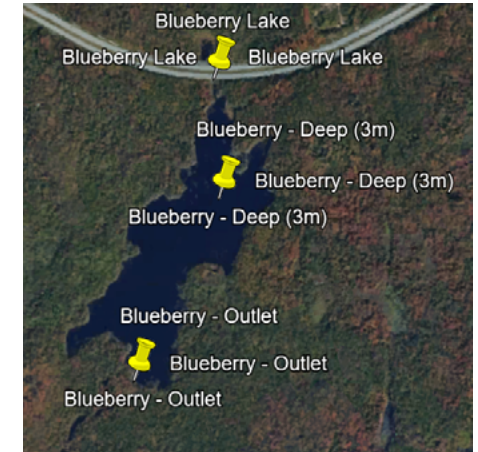
Blueberry Lake, Goodwood, Nova Scotia

SPRING AND SUMMER 2022 – 2023 WATER QUALITY DATA

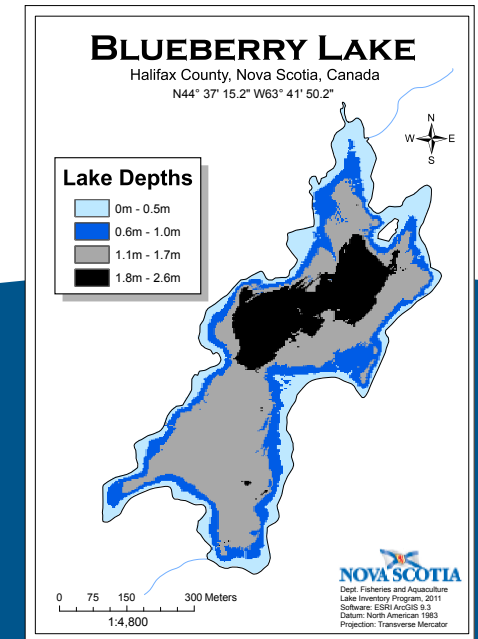
| Parameter | Spring 2022 5/25/2022 | Summer 2022 8/25/2022 | Spring 2023 4/26/2023 | Summer 2023 8/23/2023 | CCME FWAL Guideline |
|---|--------------------------|--------------------------|--------------------------|--------------------------|---|
| Sampling Team | Consultants | Consultants | Consultants | Consultants | n/a |
| pH | 5.17 | 5.37 | 5.37 | 5.02 | 6.5 to 9.0 |
| Dissolved Oxygen at Surface (mg/l) | 9.59 | 7.92 | 10.26 | 6.75 | Early life stages: >9.5 mg/L Other life stages >6.5 mg/L |
| Dissolved Chloride at Surface (Outlet) (mg/l) | 28 | 21 | 27 | 11 | Long-Term Exposure: >120 mg/L |
| Dissolved Chloride at Depth (mg/l) | 30 | 21 | 29 | 11 | Long-Term Exposure: >120 mg/L |
| Total Phosphorus at Surface (µg/l) | ND | 13.0 | 6.1 | 15.0 | *See Table 5 |
| Total Phosphorus at Depth (µg/l) | ND | 26.0 | 8.8 | 13.0 | *See Table 5 |
| Chlorophyll - a at Surface (µg/L) | 1.47 | 4.36 | 0.91 | 1.55 | *See Table 5 |
| E. coli at Surface (CFU/100ml) | ND | 6.0 | ND | 4.0 | ≥ 235 CFU/100ml |

*Table 5 of the State of the Lakes report provides estimated Trophic States of lakes based on the CCME P Framework and the NALMS Chlorophyll-a Framework

halifax.ca/lakewatchers



Satellite Imagery Map of Blueberry Lake w/ Sampling Locations



Lake Charles, Dartmouth, Nova Scotia

SPRING AND SUMMER 2022 – 2023 WATER QUALITY DATA

| Parameter | Spring 2022 4/29/2022 | Summer 2022 8/16/2022 | Spring 2023 4/18/2023 | Summer 2023 8/10/2023 | CCME FWAL Guideline |
|---|--------------------------|--------------------------|--------------------------|--------------------------|---|
| Sampling Team | Consultants | Consultants | Consultants | Collaborative | n/a |
| pH | 8.32 | 7.51 | 7.50 | 7.22 | 6.5 to 9.0 |
| Dissolved Oxygen at Surface (mg/l) | 11.89 | 8.29 | 12.04 | 7.95 | Early life stages: >9.5 mg/L Other life stages >6.5 mg/L |
| Dissolved Chloride at Surface (Outlet) (mg/l) | 62 | 66 | 58 | 47 | Long-Term Exposure: >120 mg/L |
| Dissolved Chloride at Depth (mg/l) | 64 | 66 | 60 | 58 | Long-Term Exposure: >120 mg/L |
| Total Phosphorus at Surface (µg/l) | 3.2 | ND | 1.5 | 3.6 | *See Table 5 |
| Total Phosphorus at Depth (µg/l) | 3.8 | ND | 1.7 | 3.0 | *See Table 5 |
| Chlorophyll - a at Surface (µg/L) | 6.48 | 2.35 | 1.68 | 5.07 | *See Table 5 |
| E. coli at Surface (CFU/100ml) | ND | 4.0 | ND | 32.0 | ≥ 235 CFU/100ml |

*Table 5 of the State of the Lakes report provides estimated Trophic States of lakes based on the CCME P Framework and the NALMS Chlorophyll-a Framework

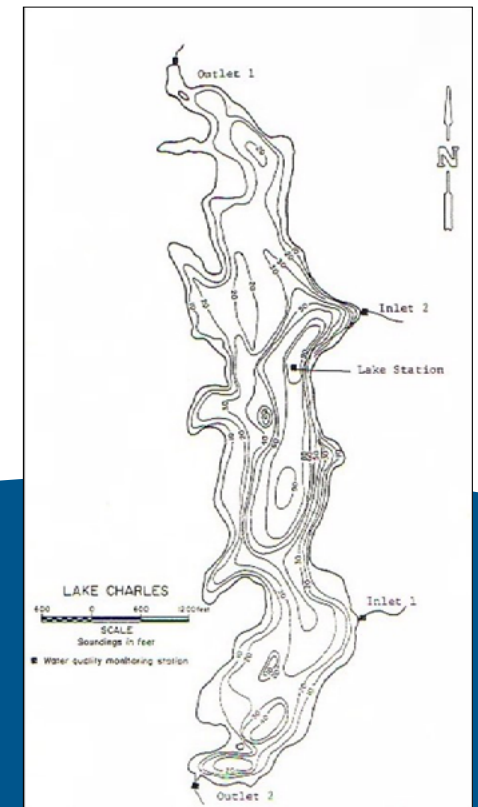
halifax.ca/lakewatchers

HalifACT Acting on
Climate
Together

LakeWatchers



Satellite Imagery Map of Lake Charles w/ Sampling Locations



Bathymetry Map of Lake Charles



Lake Charlotte, Lake Charlotte, Nova Scotia

SPRING AND SUMMER 2022 – 2023 WATER QUALITY DATA

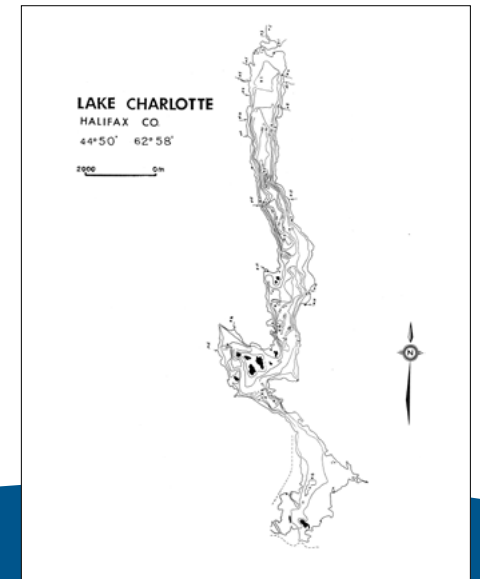
| Parameter | Spring 2022 5/17/2022 | Summer 2022 8/25/2022 | Spring 2023 4/27/2023 | Summer 2023 8/17/2023 | CCME FWAL Guideline |
|---|--------------------------|--------------------------|--------------------------|--------------------------|---|
| Sampling Team | Consultants | Consultants | Consultants | Consultants | n/a |
| pH | 6.64 | 5.72 | 5.60 | 5.66 | 6.5 to 9.0 |
| Dissolved Oxygen at Surface (mg/l) | 10.48 | 8.16 | 12.32 | 7.91 | Early life stages: >9.5 mg/L Other life stages >6.5 mg/L |
| Dissolved Chloride at Surface (Outlet) (mg/l) | 4.7 | 4.0 | 4.8 | 4.5 | Long-Term Exposure: >120 mg/L |
| Dissolved Chloride at Depth (mg/l) | 4.5 | 4.0 | 4.5 | 4.6 | Long-Term Exposure: >120 mg/L |
| Total Phosphorus at Surface (µg/l) | 3.6 | 3.6 | 4.8 | 3.9 | *See Table 5 |
| Total Phosphorus at Depth (µg/l) | 5.4 | 9.8 | 3.4 | 4.0 | *See Table 5 |
| Chlorophyll - a at Surface (µg/L) | 1.15 | 6.98 | 0.25 | 2.61 | *See Table 5 |
| E. coli at Surface (CFU/100ml) | ND | 2.0 | ND | ND | ≥ 235 CFU/100ml |

*Table 5 of the State of the Lakes report provides estimated Trophic States of lakes based on the CCME P Framework and the NALMS Chlorophyll-a Framework

halifax.ca/lakewatchers



Satellite Imagery Map of Lake Charlotte w/ Sampling Locations



Bathymetry Map of Lake Charlotte



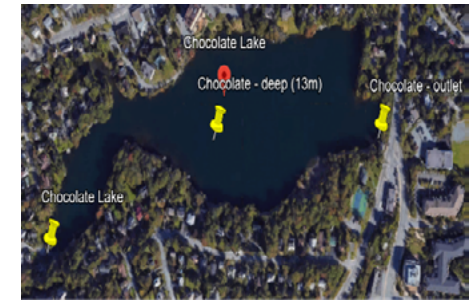
Chocolate Lake, Halifax, Nova Scotia

SPRING AND SUMMER 2022 – 2023 WATER QUALITY DATA

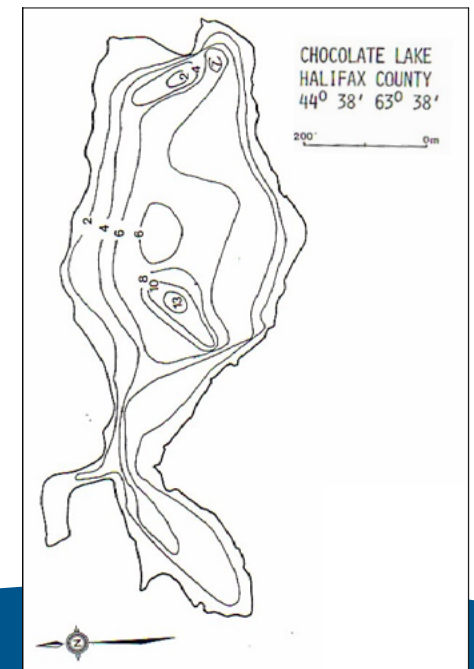
| Parameter | Spring 2022 5/2/2022 | Summer 2022 8/18/2022 | Spring 2023 4/19/2023 | Summer 2023 8/10/2023 | CCME FWAL Guideline |
|---|-------------------------|--------------------------|--------------------------|--------------------------|---|
| Sampling Team | Consultants | Collaborative | Collaborative | Collaborative | n/a |
| pH | 5.67 | 5.70 | 6.03 | 6.82 | 6.5 to 9.0 |
| Dissolved Oxygen at Surface (mg/l) | 11.26 | 8.05 | 11.09 | 8.28 | Early life stages: >9.5 mg/L Other life stages >6.5 mg/L |
| Dissolved Chloride at Surface (Outlet) (mg/l) | 100 | 100 | 120 | 60 | Long-Term Exposure: >120 mg/L |
| Dissolved Chloride at Depth (mg/l) | 110 | 160 | 120 | 89 | Long-Term Exposure: >120 mg/L |
| Total Phosphorus at Surface (µg/l) | 6.0 | ND | ND | 2.4 | *See Table 5 |
| Total Phosphorus at Depth (µg/l) | 7.1 | 1.1 | 1.6 | 1.3 | *See Table 5 |
| Chlorophyll - a at Surface (µg/L) | 6.63 | 0.74 | 0.02 | 2.20 | *See Table 5 |
| E. coli at Surface (CFU/100ml) | ND | 2.0 | ND | 8.0 | ≥ 235 CFU/100ml |

*Table 5 of the State of the Lakes report provides estimated Trophic States of lakes based on the CCME P Framework and the NALMS Chlorophyll-a Framework

halifax.ca/lakewatchers



Satellite Imagery Map of Chocolate Lake w/ Sampling Locations



Bathymetry Map of Chocolate Lake

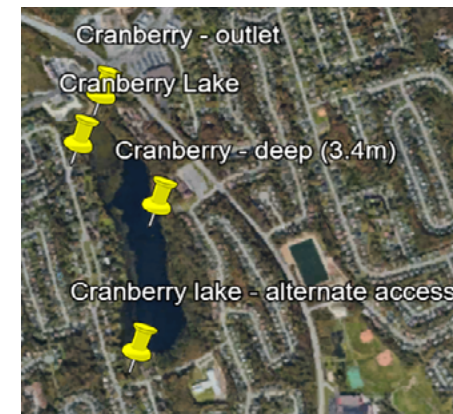
Cranberry Lake, Dartmouth, Nova Scotia

SPRING AND SUMMER 2022 – 2023 WATER QUALITY DATA

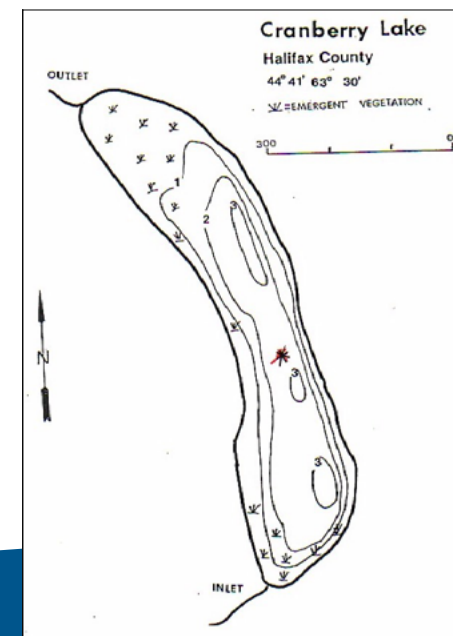
| Parameter | Spring 2022 4/28/2022 | Summer 2022 8/12/2022 | Spring 2023 4/18/2023 | Summer 2023 8/8/2023 | CCME FWAL Guideline |
|---|--------------------------|--------------------------|--------------------------|-------------------------|---|
| Sampling Team | Consultants | Consultants | Consultants | Consultants | n/a |
| pH | 6.19 | 7.47 | 7.04 | 7.42 | 6.5 to 9.0 |
| Dissolved Oxygen at Surface (mg/l) | 10.55 | 7.45 | 10.78 | 8.57 | Early life stages: >9.5 mg/L Other life stages >6.5 mg/L |
| Dissolved Chloride at Surface (Outlet) (mg/l) | 150 | 110 | 110 | 53 | Long-Term Exposure: >120 mg/L |
| Dissolved Chloride at Depth (mg/l) | 160 | 110 | 120 | 44 | Long-Term Exposure: >120 mg/L |
| Total Phosphorus at Surface (µg/l) | 7.1 | 3.1 | 2.2 | 25.0 | *See Table 5 |
| Total Phosphorus at Depth (µg/l) | 13.0 | 25.0 | 5.4 | 15.0 | *See Table 5 |
| Chlorophyll - a at Surface (µg/L) | 1.94 | 6.18 | 0.80 | 3.95 | *See Table 5 |
| E. coli at Surface (CFU/100ml) | 10.0 | 2.0 | 2.0 | 12.0 | ≥ 235 CFU/100ml |

*Table 5 of the State of the Lakes report provides estimated Trophic States of lakes based on the CCME P Framework and the NALMS Chlorophyll-a Framework

halifax.ca/lakewatchers



Satellite Imagery Map of Cranberry Lake w/ Sampling Locations



Bathymetry Map of Cranberry Lake

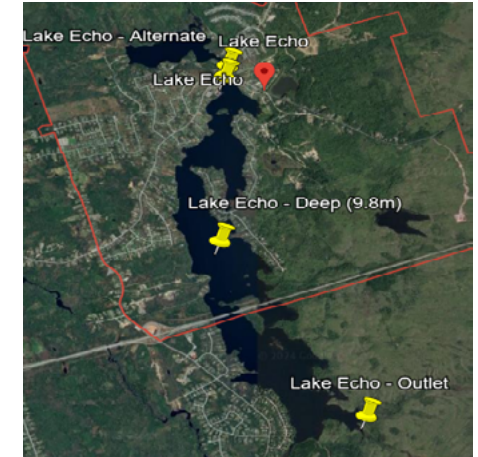
Lake Echo, Lake Echo, Nova Scotia

SPRING AND SUMMER 2022 – 2023 WATER QUALITY DATA

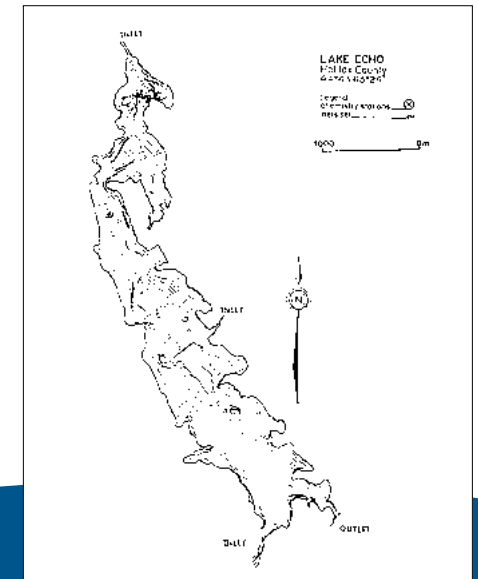
| Parameter | Spring 2022 5/16/2022 | Summer 2022 8/30/2022 | Spring 2023 5/3/2023 | Summer 2023 8/22/2023 | CCME FWAL Guideline |
|---|--------------------------|--------------------------|-------------------------|--------------------------|---|
| Sampling Team | Consultants | Consultants | Consultants | Consultants | n/a |
| pH | 6.79 | 7.06 | 5.69 | 5.36 | 6.5 to 9.0 |
| Dissolved Oxygen at Surface (mg/l) | 9.43 | 8.16 | 10.62 | 7.05 | Early life stages: >9.5 mg/L Other life stages >6.5 mg/L |
| Dissolved Chloride at Surface (Outlet) (mg/l) | 5.8 | 6.6 | 5.6 | 4.4 | Long-Term Exposure: >120 mg/L |
| Dissolved Chloride at Depth (mg/l) | 6.1 | 7.2 | 6.6 | 7.0 | Long-Term Exposure: >120 mg/L |
| Total Phosphorus at Surface (µg/l) | 6.4 | 11.0 | 5.0 | 11.0 | *See Table 5 |
| Total Phosphorus at Depth (µg/l) | 6.0 | 16.0 | 6.3 | 22.0 | *See Table 5 |
| Chlorophyll - a at Surface (µg/L) | 4.22 | 9.48 | 1.59 | 4.09 | *See Table 5 |
| E. coli at Surface (CFU/100ml) | ND | 2.0 | 2.0 | 2.0 | ≥ 235 CFU/100ml |

*Table 5 of the State of the Lakes report provides estimated Trophic States of lakes based on the CCME P Framework and the NALMS Chlorophyll-a Framework

halifax.ca/lakewatchers



Satellite Imagery Map of Lake Echo w/ Sampling Locations



Bathymetry Map of Lake Echo

Elbow Lake, Hubley, Nova Scotia

SPRING AND SUMMER 2022 – 2023 WATER QUALITY DATA

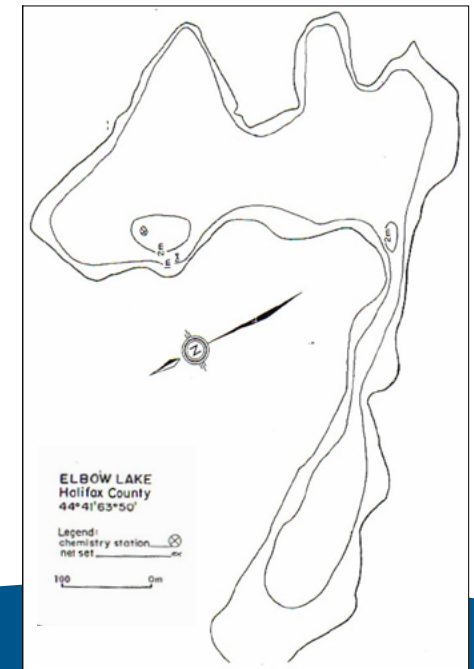
| Parameter | Spring 2022 5/12/2022 | Summer 2022 8/29/2022 | Spring 2023 4/20/2023 | Summer 2023 8/10/2023 | CCME FWAL Guideline |
|---|--------------------------|--------------------------|--------------------------|--------------------------|---|
| Sampling Team | Consultants | Consultants | Consultants | Consultants | n/a |
| pH | 7.36 | 6.70 | 6.70 | 6.53 | 6.5 to 9.0 |
| Dissolved Oxygen at Surface (mg/l) | 11.18 | 8.59 | 11.33 | 7.89 | Early life stages: >9.5 mg/L Other life stages >6.5 mg/L |
| Dissolved Chloride at Surface (Outlet) (mg/l) | 47 | 42 | 45 | 18 | Long-Term Exposure: >120 mg/L |
| Dissolved Chloride at Depth (mg/l) | 42 | 38 | 42 | 15 | Long-Term Exposure: >120 mg/L |
| Total Phosphorus at Surface (µg/l) | 13.0 | 5.8 | 7.9 | 15.0 | *See Table 5 |
| Total Phosphorus at Depth (µg/l) | 24.0 | 5.5 | 12.0 | 16.0 | *See Table 5 |
| Chlorophyll - a at Surface (µg/L) | 48.90 | 5.99 | 7.40 | 23.70 | *See Table 5 |
| E. coli at Surface (CFU/100ml) | ND | 2.0 | ND | 18 | ≥ 235 CFU/100ml |

*Table 5 of the State of the Lakes report provides estimated Trophic States of lakes based on the CCME P Framework and the NALMS Chlorophyll-a Framework

halifax.ca/lakewatchers



Satellite Imagery Map of Elbow Lake



Bathymetry Map of Elbow Lake



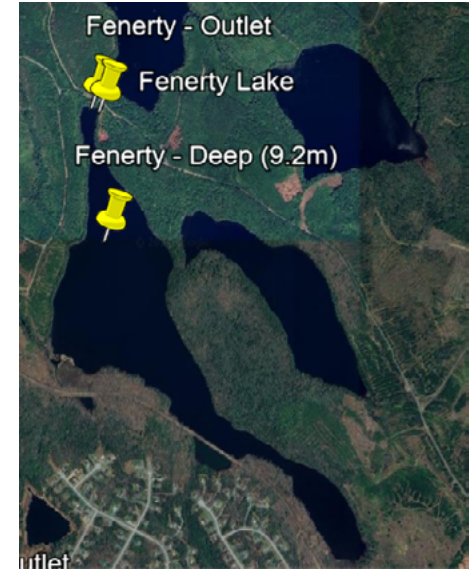
Fenerty Lake, Beaver Bank, Nova Scotia

SPRING AND SUMMER 2022 – 2023 WATER QUALITY DATA

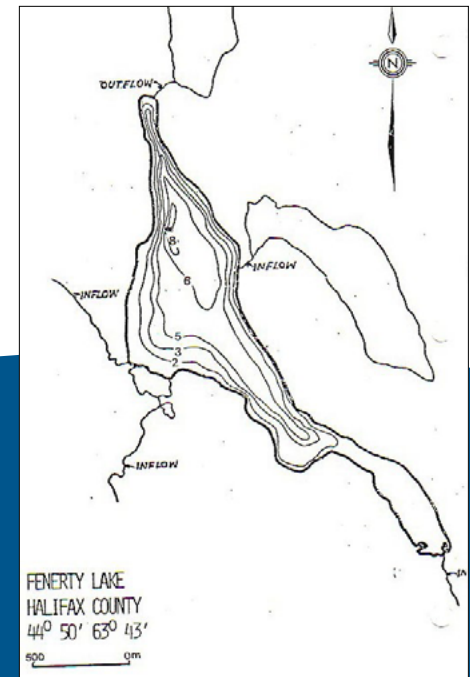
| Parameter | Spring 2022 5/5/2022 | Summer 2022 8/24/2022 | Spring 2023 4/25/2023 | Summer 2023 8/21/2023 | CCME FWAL Guideline |
|---|-------------------------|--------------------------|--------------------------|--------------------------|---|
| Sampling Team | Consultants | Consultants | Consultants | Consultants | n/a |
| pH | 7.21 | 8.75 | 6.73 | 6.44 | 6.5 to 9.0 |
| Dissolved Oxygen at Surface (mg/l) | 14.22 | 9.60 | 10.99 | 8.08 | Early life stages: >9.5 mg/L Other life stages >6.5 mg/L |
| Dissolved Chloride at Surface (Outlet) (mg/l) | 14.0 | 15.0 | 13.0 | 9.6 | Long-Term Exposure: >120 mg/L |
| Dissolved Chloride at Depth (mg/l) | 13.0 | 13.0 | 14.0 | 12.0 | Long-Term Exposure: >120 mg/L |
| Total Phosphorus at Surface (µg/l) | 15.0 | 17.0 | 11.0 | 22.0 | *See Table 5 |
| Total Phosphorus at Depth (µg/l) | 20.0 | 17.0 | 14.0 | 79.0 | *See Table 5 |
| Chlorophyll - a at Surface (µg/L) | 15.9 | 45.8 | 6.19 | 7.1 | *See Table 5 |
| E. coli at Surface (CFU/100ml) | ND | 4.0 | ND | 20.0 | ≥ 235 CFU/100ml |

*Table 5 of the State of the Lakes report provides estimated Trophic States of lakes based on the CCME P Framework and the NALMS Chlorophyll-a Framework

halifax.ca/lakewatchers



Satellite Imagery Map of Fenerty Lake w/ Sampling Locations



Bathymetry Map of Fenerty Lake

First Chain Lake, Halifax, Nova Scotia

SPRING AND SUMMER 2022 – 2023 WATER QUALITY DATA

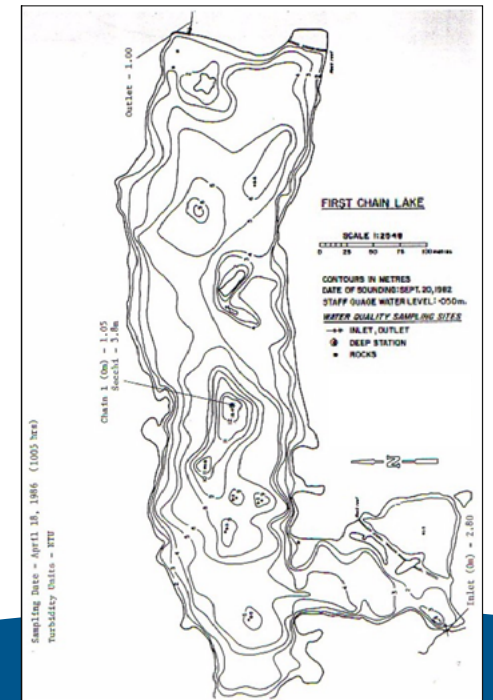
| Parameter | Spring 2022 5/19/2022 | Summer 2022 8/26/2022 | Spring 2023 4/28/2023 | Summer 2023 8/21/2023 | CCME FWAL Guideline |
|---|--------------------------|--------------------------|--------------------------|--------------------------|---|
| Sampling Team | Consultants | Consultants | Consultants | Consultants | n/a |
| pH | 4.69 | 4.42 | 4.84 | 4.76 | 6.5 to 9.0 |
| Dissolved Oxygen at Surface (mg/l) | 10.51 | 8.44 | 10.66 | 8.40 | Early life stages: >9.5 mg/L Other life stages >6.5 mg/L |
| Dissolved Chloride at Surface (Outlet) (mg/l) | 73 | 80 | 63 | 55 | Long-Term Exposure: >120 mg/L |
| Dissolved Chloride at Depth (mg/l) | 71 | 80 | 63 | 55 | Long-Term Exposure: >120 mg/L |
| Total Phosphorus at Surface (µg/l) | ND | 1.1 | ND | ND | *See Table 5 |
| Total Phosphorus at Depth (µg/l) | ND | 1.2 | 3.8 | 1.1 | *See Table 5 |
| Chlorophyll - a at Surface (µg/L) | 0.44 | 0.45 | 0.16 | 0.50 | *See Table 5 |
| E. coli at Surface (CFU/100ml) | ND | ND | ND | ND | ≥ 235 CFU/100ml |

*Table 5 of the State of the Lakes report provides estimated Trophic States of lakes based on the CCME P Framework and the NALMS Chlorophyll-a Framework

halifax.ca/lakewatchers



Satellite Imagery Map of First Chain Lake w/ Sampling Locations



Bathymetry Map of First Chain Lake



First Lake, Lower Sackville, Nova Scotia

SPRING AND SUMMER 2022 – 2023 WATER QUALITY DATA

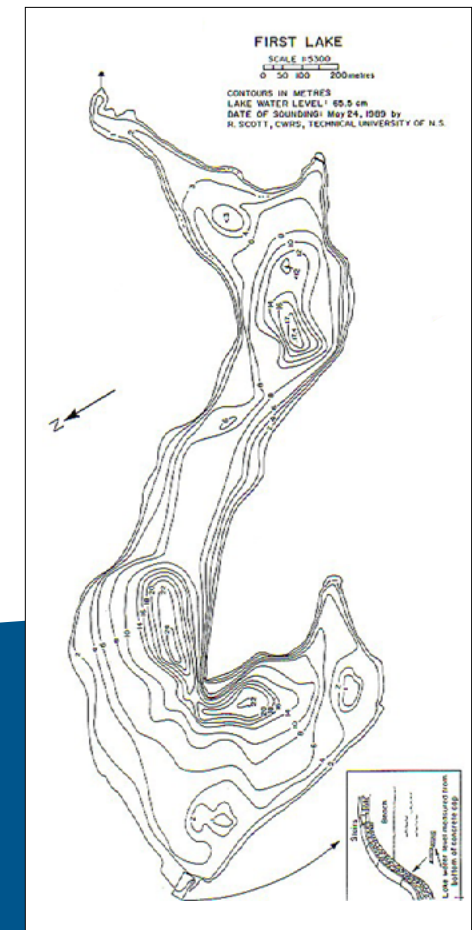
| Parameter | Spring 2022 10/5/2022 | Summer 2022 16/8/2022 | Spring 2023 25/4/2023 | Summer 2023 22/8/2023 | CCME FWAL Guideline |
|---|--------------------------|--------------------------|--------------------------|--------------------------|---|
| Sampling Team | Consultants | Volunteers | Volunteers | Volunteers | n/a |
| pH | 8.58 | 7.94 | 8.40 | 7.63 | 6.5 to 9.0 |
| Dissolved Oxygen at Surface (mg/l) | 11.01 | 7.63 | 10.98 | 8.66 | Early life stages: >9.5 mg/L Other life stages >6.5 mg/L |
| Dissolved Chloride at Surface (Outlet) (mg/l) | 140 | 120 | 120 | 83 | Long-Term Exposure: >120 mg/L |
| Dissolved Chloride at Depth (mg/l) | 140 | 120 | 120 | 120 | Long-Term Exposure: >120 mg/L |
| Total Phosphorus at Surface (µg/l) | 7.1 | ND | 5.7 | 5.4 | *See Table 5 |
| Total Phosphorus at Depth (µg/l) | 8.9 | 8.1 | 5.3 | 5.4 | *See Table 5 |
| Chlorophyll - a at Surface (µg/L) | 3.63 | 2.42 | 15.1 | 7.99 | *See Table 5 |
| E. coli at Surface (CFU/100ml) | ND | ND | ND | 6.0 | ≥ 235 CFU/100ml |

*Table 5 of the State of the Lakes report provides estimated Trophic States of lakes based on the CCME P Framework and the NALMS Chlorophyll-a Framework

halifax.ca/lakewatchers



Satellite Imagery Map of First Lake w/ Sampling Locations



Bathymetry Map of First Lake

Five Islands Lake, Hubley, Nova Scotia

SPRING AND SUMMER 2022 – 2023 WATER QUALITY DATA

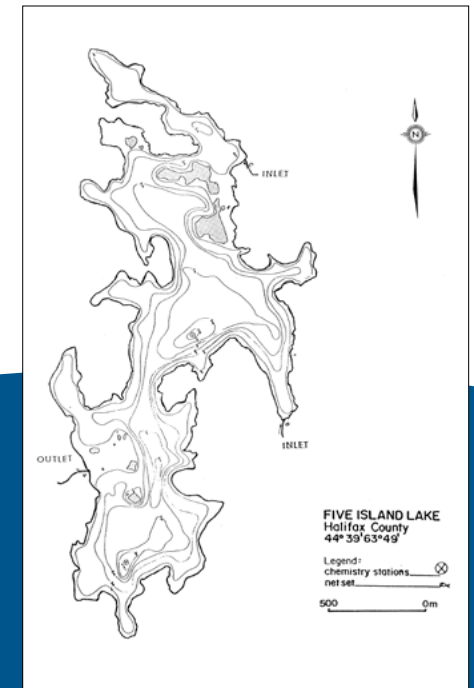
| Parameter | Spring 2022 5/2/2022 | Summer 2022 8/15/2022 | Spring 2023 4/17/2023 | Summer 2023 8/23/2023 | CCME FWAL Guideline |
|---|-------------------------|--------------------------|--------------------------|--------------------------|---|
| Sampling Team | Consultants | Consultants | Consultants | Volunteers | n/a |
| pH | 6.29 | 5.81 | 7.22 | 5.84 | 6.5 to 9.0 |
| Dissolved Oxygen at Surface (mg/l) | 11.04 | 7.74 | 11.07 | 7.55 | Early life stages: >9.5 mg/L Other life stages >6.5 mg/L |
| Dissolved Chloride at Surface (Outlet) (mg/l) | 18 | 19 | 14 | 13 | Long-Term Exposure: >120 mg/L |
| Dissolved Chloride at Depth (mg/l) | 19 | 18 | 18 | 17 | Long-Term Exposure: >120 mg/L |
| Total Phosphorus at Surface (µg/l) | 9.0 | 29.0 | 7.4 | 12.0 | *See Table 5 |
| Total Phosphorus at Depth (µg/l) | 8.3 | 19.0 | 6.8 | 70.0 | *See Table 5 |
| Chlorophyll - a at Surface (µg/L) | 4.23 | 2.36 | 2.75 | 4.08 | *See Table 5 |
| E. coli at Surface (CFU/100ml) | ND | 2.0 | 2.0 | 2.0 | ≥ 235 CFU/100ml |

*Table 5 of the State of the Lakes report provides estimated Trophic States of lakes based on the CCME P Framework and the NALMS Chlorophyll-a Framework

halifax.ca/lakewatchers



Satellite Imagery Map of Five Islands Lake w/ Sampling Locations



Bathymetry Map of Five Islands Lake

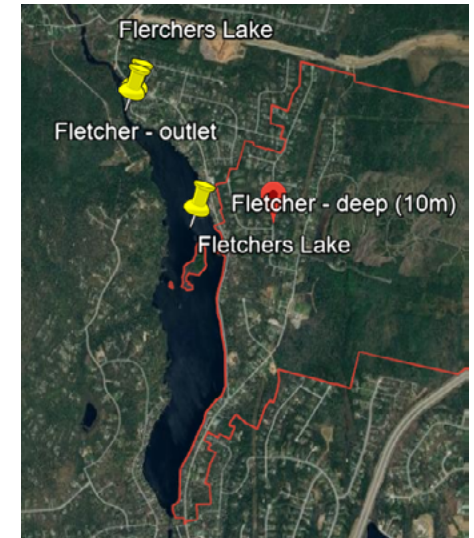
Fletchers Lake, Fall River, Nova Scotia

SPRING AND SUMMER 2022 – 2023 WATER QUALITY DATA

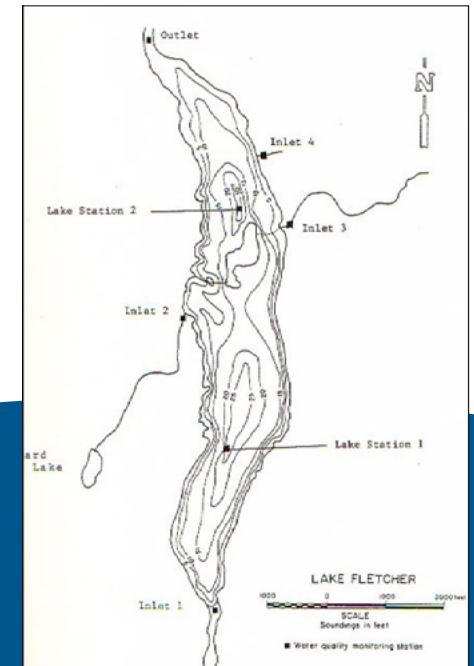
| Parameter | Spring 2022 5/2/2022 | Summer 2022 8/15/2022 | Spring 2023 4/17/2023 | Summer 2023 8/23/2023 | CCME FWAL Guideline |
|---|-------------------------|--------------------------|--------------------------|--------------------------|---|
| Sampling Team | Consultants | Consultants | Consultants | Consultants | n/a |
| pH | 7.55 | 7.27 | 7.28 | 6.84 | 6.5 to 9.0 |
| Dissolved Oxygen at Surface (mg/l) | 11.14 | 8.22 | 11.30 | 7.36 | Early life stages: >9.5 mg/L Other life stages >6.5 mg/L |
| Dissolved Chloride at Surface (Outlet) (mg/l) | 40 | 39 | 37 | 27 | Long-Term Exposure: >120 mg/L |
| Dissolved Chloride at Depth (mg/l) | 34 | 39 | 38 | 36 | Long-Term Exposure: >120 mg/L |
| Total Phosphorus at Surface (µg/l) | 4.8 | ND | 5.3 | 5.4 | *See Table 5 |
| Total Phosphorus at Depth (µg/l) | 5.3 | ND | 6.3 | ND | *See Table 5 |
| Chlorophyll - a at Surface (µg/L) | 2.32 | 3.72 | 1.13 | 3.74 | *See Table 5 |
| E. coli at Surface (CFU/100ml) | ND | 4.0 | ND | 86.0 | ≥ 235 CFU/100ml |

*Table 5 of the State of the Lakes report provides estimated Trophic States of lakes based on the CCME P Framework and the NALMS Chlorophyll-a Framework

halifax.ca/lakewatchers



Satellite Imagery Map of Fletchers Lake w/ Sampling Locations



Bathymetry Map of Fletchers Lake

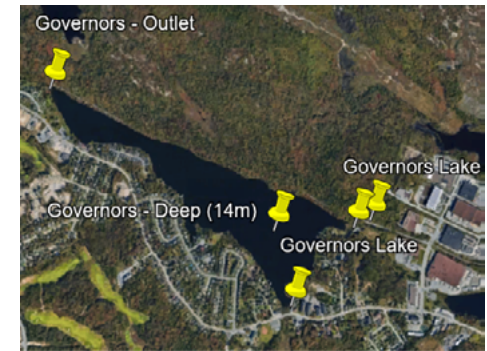
Governor Lake, Lakeside, Nova Scotia

SPRING AND SUMMER 2022 – 2023 WATER QUALITY DATA

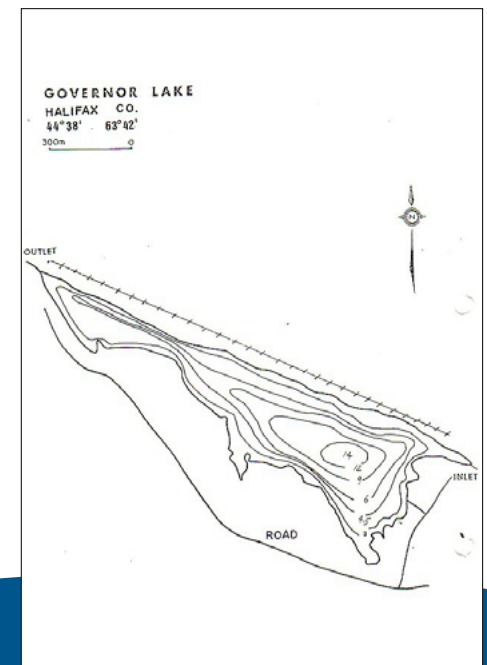
| Parameter | Spring 2022 5/2/2022 | Summer 2022 8/26/2022 | Spring 2023 4/26/2023 | Summer 2023 8/16/2023 | CCME FWAL Guideline |
|---|-------------------------|--------------------------|--------------------------|--------------------------|---|
| Sampling Team | Consultants | Collaborative | Collaborative | Collaborative | n/a |
| pH | 6.71 | 7.12 | 6.65 | 7.18 | 6.5 to 9.0 |
| Dissolved Oxygen at Surface (mg/l) | 11.24 | 8.22 | 10.99 | 7.47 | Early life stages: >9.5 mg/L Other life stages >6.5 mg/L |
| Dissolved Chloride at Surface (Outlet) (mg/l) | 150 | 130 | 120 | 63 | Long-Term Exposure: >120 mg/L |
| Dissolved Chloride at Depth (mg/l) | 150 | 150 | 120 | 120 | Long-Term Exposure: >120 mg/L |
| Total Phosphorus at Surface (µg/l) | 5.1 | 2.5 | 2.8 | 7.6 | *See Table 5 |
| Total Phosphorus at Depth (µg/l) | 5.4 | 8.6 | 6.9 | 15.0 | *See Table 5 |
| Chlorophyll - a at Surface (µg/L) | 0.75 | 2.69 | 2.72 | 4.32 | *See Table 5 |
| E. coli at Surface (CFU/100ml) | ND | 12 | ND | 40 | ≥ 235 CFU/100ml |

*Table 5 of the State of the Lakes report provides estimated Trophic States of lakes based on the CCME P Framework and the NALMS Chlorophyll-a Framework

halifax.ca/lakewatchers



Satellite Imagery Map of Governor Lake w/ Sampling Locations



Bathymetry Map of Governor Lake

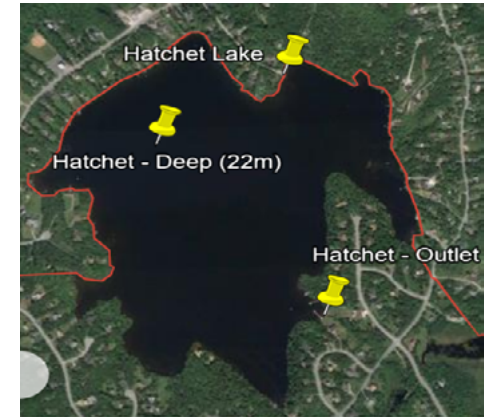
Hatchet Lake, Brookside, Nova Scotia

SPRING AND SUMMER 2022 – 2023 WATER QUALITY DATA

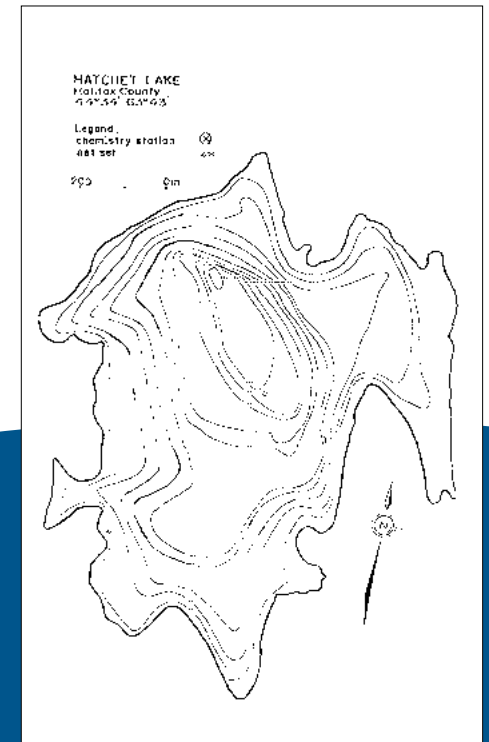
| Parameter | Spring 2022 5/6/2022 | Summer 2022 9/1/2022 | Spring 2023 5/2/2023 | Summer 2023 8/16/2023 | CCME FWAL Guideline |
|---|-------------------------|-------------------------|-------------------------|--------------------------|---|
| Sampling Team | Consultants | Consultants | Consultants | Consultants | n/a |
| pH | 8.84 | 6.70 | 8.13 | 6.52 | 6.5 to 9.0 |
| Dissolved Oxygen at Surface (mg/l) | 11.09 | 8.29 | 11.54 | 8.28 | Early life stages: >9.5 mg/L Other life stages >6.5 mg/L |
| Dissolved Chloride at Surface (Outlet) (mg/l) | 28 | 28 | 28 | 27 | Long-Term Exposure: >120 mg/L |
| Dissolved Chloride at Depth (mg/l) | 24 | 27 | 28 | 29 | Long-Term Exposure: >120 mg/L |
| Total Phosphorus at Surface (µg/l) | 3.6 | 4.0 | 9.4 | 2.7 | *See Table 5 |
| Total Phosphorus at Depth (µg/l) | 3.0 | 7.7 | 2.9 | 6.7 | *See Table 5 |
| Chlorophyll - a at Surface (µg/L) | 1.59 | 1.86 | 0.61 | 4.12 | *See Table 5 |
| E. coli at Surface (CFU/100ml) | ND | 14.0 | 14.0 | 2.0 | ≥ 235 CFU/100ml |

*Table 5 of the State of the Lakes report provides estimated Trophic States of lakes based on the CCME P Framework and the NALMS Chlorophyll-a Framework

halifax.ca/lakewatchers



Satellite Imagery Map of Hatchet Lake w/ Sampling Locations



Bathymetry Map of Hatchet Lake

Hubley Big Lake, Hubley, Nova Scotia

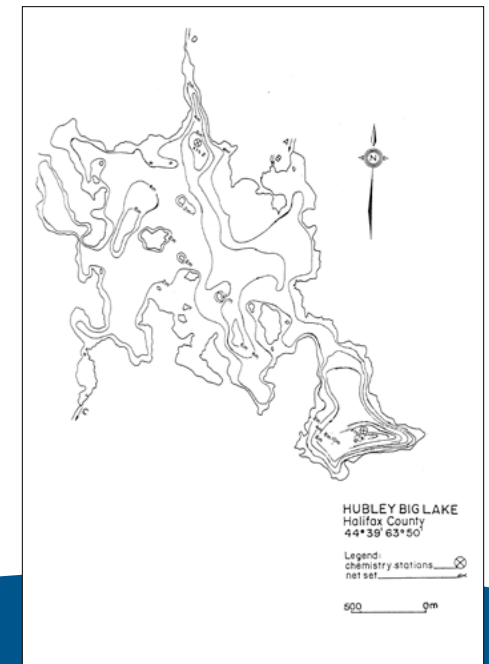
SPRING AND SUMMER 2022 – 2023 WATER QUALITY DATA

| Parameter | Spring 2022 5/2/2022 | Summer 2022 8/15/2022 | Spring 2023 4/17/2023 | Summer 2023 8/23/2023 | CCME FWAL Guideline |
|---|-------------------------|--------------------------|--------------------------|--------------------------|---|
| Sampling Team | Consultants | Consultants | Consultants | Consultants | n/a |
| pH | 5.64 | 5.45 | 5.10 | 5.58 | 6.5 to 9.0 |
| Dissolved Oxygen at Surface (mg/l) | 10.10 | 8.18 | 10.92 | 7.91 | Early life stages: >9.5 mg/L Other life stages >6.5 mg/L |
| Dissolved Chloride at Surface (Outlet) (mg/l) | 13.0 | 12.0 | 12.0 | 11.0 | Long-Term Exposure: >120 mg/L |
| Dissolved Chloride at Depth (mg/l) | 6.6 | 6.4 | 8.0 | 12.0 | Long-Term Exposure: >120 mg/L |
| Total Phosphorus at Surface (µg/l) | 6.9 | 4.4 | 6.3 | 13.0 | *See Table 5 |
| Total Phosphorus at Depth (µg/l) | 7.6 | 23.0 | 9.6 | 38.0 | *See Table 5 |
| Chlorophyll - a at Surface (µg/L) | 2.80 | 4.28 | 1.85 | 8.55 | *See Table 5 |
| E. coli at Surface (CFU/100ml) | ND | ND | ND | 2.0 | ≥ 235 CFU/100ml |

*Table 5 of the State of the Lakes report provides estimated Trophic States of lakes based on the CCME P Framework and the NALMS Chlorophyll-a Framework



Satellite Imagery Map of Hubley Big Lake w/ Sampling Locations



Bathymetry Map of Hubley Big Lake

halifax.ca/lakewatchers



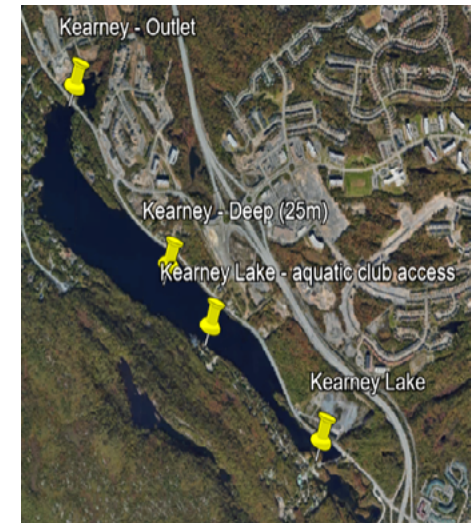
Kearney Lake, Bedford, Nova Scotia

SPRING AND SUMMER 2022 – 2023 WATER QUALITY DATA

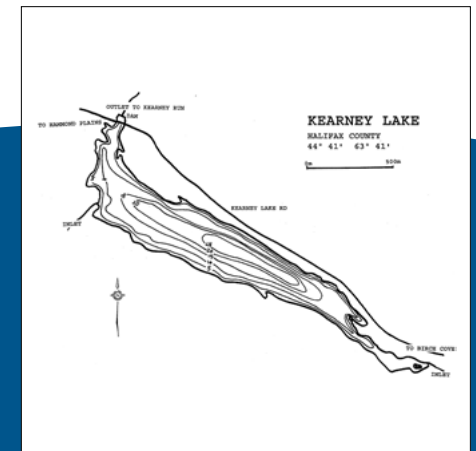
| Parameter | Spring 2022 5/4/2022 | Summer 2022 8/18/2022 | Spring 2023 4/24/2023 | Summer 2023 8/29/2023 | CCME FWAL Guideline |
|---|-------------------------|--------------------------|--------------------------|--------------------------|---|
| Sampling Team | Consultants | Collaborative | Volunteers | Volunteers | n/a |
| pH | 7.46 | 6.89 | 7.10 | 6.83 | 6.5 to 9.0 |
| Dissolved Oxygen at Surface (mg/l) | 11.11 | 8.49 | 10.65 | 6.77 | Early life stages: >9.5 mg/L Other life stages >6.5 mg/L |
| Dissolved Chloride at Surface (Outlet) (mg/l) | 65 | 70 | 62 | 29 | Long-Term Exposure: >120 mg/L |
| Dissolved Chloride at Depth (mg/l) | 67 | 67 | 60 | 58 | Long-Term Exposure: >120 mg/L |
| Total Phosphorus at Surface (µg/l) | 2.0 | ND | 4.6 | 2.7 | *See Table 5 |
| Total Phosphorus at Depth (µg/l) | 1.9 | ND | 4.4 | 3.4 | *See Table 5 |
| Chlorophyll - a at Surface (µg/L) | 0.79 | 1.80 | 0.41 | 1.24 | *See Table 5 |
| E. coli at Surface (CFU/100ml) | ND | 2.0 | ND | 4.0 | ≥ 235 CFU/100ml |

*Table 5 of the State of the Lakes report provides estimated Trophic States of lakes based on the CCME P Framework and the NALMS Chlorophyll-a Framework

halifax.ca/lakewatchers



Satellite Imagery Map of Kearney Lake w/ Sampling Locations



Bathymetry Map of Kearney Lake

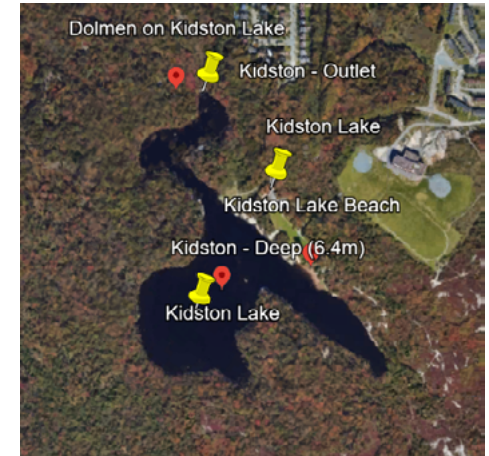
Kidston Lake, Spryfield, Nova Scotia

SPRING AND SUMMER 2022 – 2023 WATER QUALITY DATA

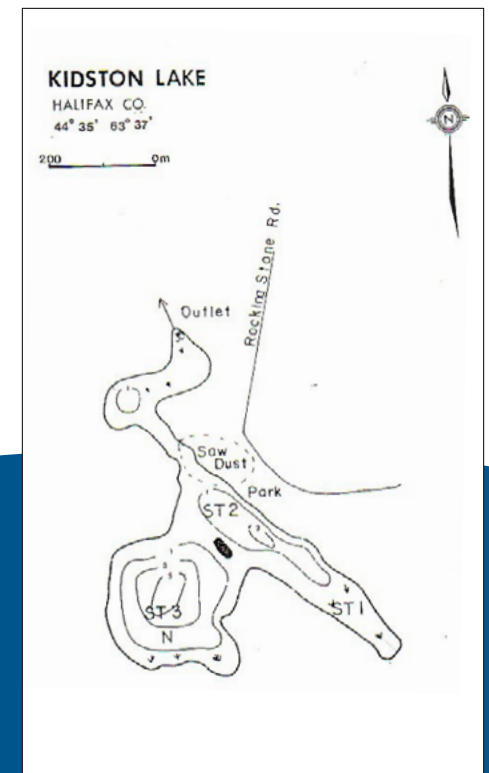
| Parameter | Spring 2022 4/29/2022 | Summer 2022 8/19/2022 | Spring 2023 4/20/2023 | Summer 2023 8/9/2023 | CCME FWAL Guideline |
|---|--------------------------|--------------------------|--------------------------|-------------------------|---|
| Sampling Team | Consultants | Consultants | Consultants | Consultants | n/a |
| pH | 5.61 | 7.01 | 6.26 | 6.53 | 6.5 to 9.0 |
| Dissolved Oxygen at Surface (mg/l) | 9.41 | 7.96 | 10.58 | 7.66 | Early life stages: >9.5 mg/L Other life stages >6.5 mg/L |
| Dissolved Chloride at Surface (Outlet) (mg/l) | 6.1 | 6.1 | 5.2 | 4.6 | Long-Term Exposure: >120 mg/L |
| Dissolved Chloride at Depth (mg/l) | 6.3 | 6.5 | 5.0 | 6.0 | Long-Term Exposure: >120 mg/L |
| Total Phosphorus at Surface (µg/l) | 4.0 | 14.0 | 4.7 | 6.8 | *See Table 5 |
| Total Phosphorus at Depth (µg/l) | 2.9 | 16.0 | 9.7 | 16.0 | *See Table 5 |
| Chlorophyll - a at Surface (µg/L) | 1.6 | 1.2 | 0.8 | 2.2 | *See Table 5 |
| E. coli at Surface (CFU/100ml) | ND | 8.0 | 4.0 | 250 | ≥ 235 CFU/100ml |

*Table 5 of the State of the Lakes report provides estimated Trophic States of lakes based on the CCME P Framework and the NALMS Chlorophyll-a Framework

halifax.ca/lakewatchers



Satellite Imagery Map of Kidston Lake Spryfield w/ Sampling Locations



Bathymetry Map of Kidston Lake

Kinsac Lake, Fall River, Nova Scotia

SPRING AND SUMMER 2022 – 2023 WATER QUALITY DATA

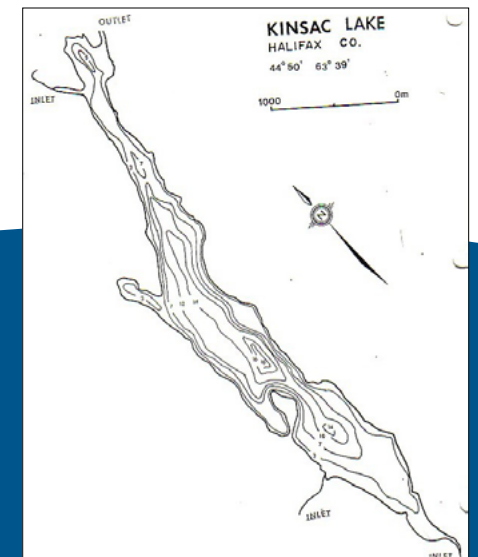
| Parameter | Spring 2022 5/2/2022 | Summer 2022 8/15/2022 | Spring 2023 4/17/2023 | Summer 2023 8/23/2023 | CCME FWAL Guideline |
|---|-------------------------|--------------------------|--------------------------|--------------------------|---|
| Sampling Team | Consultants | Consultants | Consultants | Consultants | n/a |
| pH | 7.35 | 7.13 | 6.62 | 6.58 | 6.5 to 9.0 |
| Dissolved Oxygen at Surface (mg/l) | 10.73 | 8.08 | 11.39 | 6.90 | Early life stages: >9.5 mg/L Other life stages >6.5 mg/L |
| Dissolved Chloride at Surface (Outlet) (mg/l) | 11.00 | 18.00 | 16.00 | 9.70 | Long-Term Exposure: >120 mg/L |
| Dissolved Chloride at Depth (mg/l) | 24.0 | 21.0 | 19.0 | 18.0 | Long-Term Exposure: >120 mg/L |
| Total Phosphorus at Surface (µg/l) | 8.3 | ND | 5.2 | 13.0 | *See Table 5 |
| Total Phosphorus at Depth (µg/l) | 6.8 | 4.2 | 4.5 | 5.1 | *See Table 5 |
| Chlorophyll - a at Surface (µg/L) | 1.44 | 3.93 | 1.66 | 7.50 | *See Table 5 |
| E. coli at Surface (CFU/100ml) | ND | 6.0 | ND | 4.0 | ≥ 235 CFU/100ml |

*Table 5 of the State of the Lakes report provides estimated Trophic States of lakes based on the CCME P Framework and the NALMS Chlorophyll-a Framework

halifax.ca/lakewatchers



Satellite Imagery Map of Kinsac Lake w/ Sampling Locations



Bathymetry Map of Kinsac Lake

Lemont Lake, Dartmouth, Nova Scotia

SPRING AND SUMMER 2022 – 2023 WATER QUALITY DATA

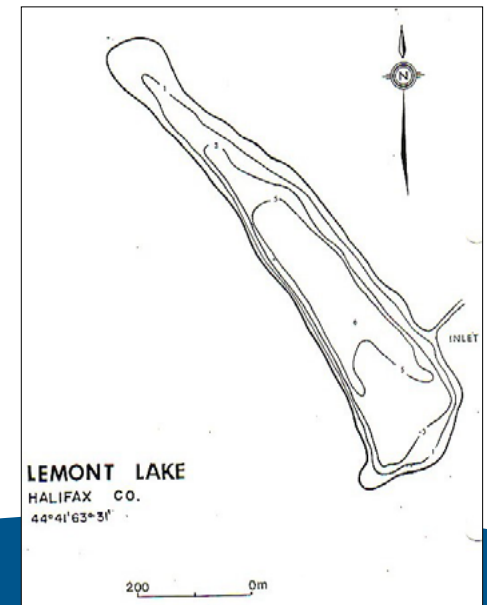
| Parameter | Spring 2022 5/6/2022 | Summer 2022 8/15/2022 | Spring 2023 4/17/2023 | Summer 2023 8/8/2023 | CCME FWAL Guideline |
|---|-------------------------|--------------------------|--------------------------|-------------------------|---|
| Sampling Team | Consultants | Consultants | Consultants | Consultants | n/a |
| pH | 6.21 | 6.74 | 7.84 | 6.24 | 6.5 to 9.0 |
| Dissolved Oxygen at Surface (mg/l) | 12.46 | 7.81 | 11.37 | 7.61 | Early life stages: >9.5 mg/L Other life stages >6.5 mg/L |
| Dissolved Chloride at Surface (Outlet) (mg/l) | 12 | 12 | 11 | 10 | Long-Term Exposure: >120 mg/L |
| Dissolved Chloride at Depth (mg/l) | 12.0 | 12.0 | 11.0 | 7.7 | Long-Term Exposure: >120 mg/L |
| Total Phosphorus at Surface (µg/l) | 3.4 | ND | ND | 4.0 | *See Table 5 |
| Total Phosphorus at Depth (µg/l) | 1.7 | ND | 1.6 | 4.9 | *See Table 5 |
| Chlorophyll - a at Surface (µg/L) | 0.82 | 1.33 | 0.56 | 2.78 | *See Table 5 |
| E. coli at Surface (CFU/100ml) | ND | 20 | ND | 22 | ≥ 235 CFU/100ml |

*Table 5 of the State of the Lakes report provides estimated Trophic States of lakes based on the CCME P Framework and the NALMS Chlorophyll-a Framework

halifax.ca/lakewatchers



Satellite Imagery Map of Lemont Lake w/ Sampling Locations



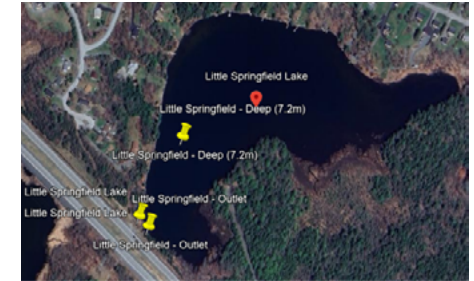
Bathymetry Map of Lemont Lake



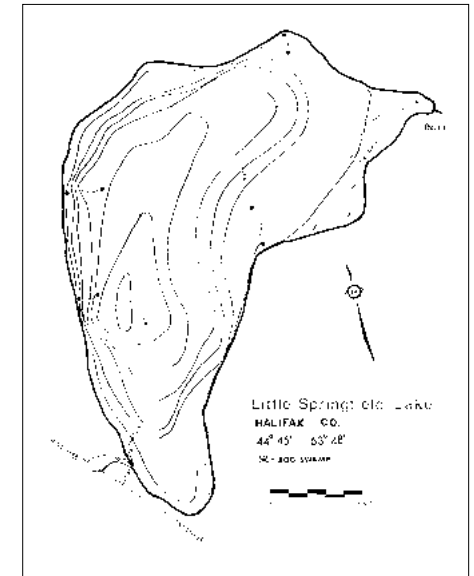
Little Springfield Lake, Middle Sackville, Nova Scotia

SPRING AND SUMMER 2022 – 2023 WATER QUALITY DATA

| Parameter | Spring 2022 5/3/2022 | Summer 2022 8/18/2022 | Spring 2023 4/19/2023 | Summer 2023 8/8/2023 | CCME FWAL Guideline |
|---|-------------------------|--------------------------|--------------------------|-------------------------|---|
| Sampling Team | Consultants | Consultants | Consultants | Consultants | n/a |
| pH | 6.32 | 6.60 | 6.41 | 6.75 | 6.5 to 9.0 |
| Dissolved Oxygen at Surface (mg/l) | 12.40 | 7.67 | 10.82 | 8.37 | Early life stages: >9.5 mg/L Other life stages >6.5 mg/L |
| Dissolved Chloride at Surface (Outlet) (mg/l) | 74 | 72 | 63 | 43 | Long-Term Exposure: >120 mg/L |
| Dissolved Chloride at Depth (mg/l) | 74 | 72 | 61 | 61 | Long-Term Exposure: >120 mg/L |
| Total Phosphorus at Surface (µg/l) | 5.6 | ND | 3.7 | 5.3 | *See Table 5 |
| Total Phosphorus at Depth (µg/l) | 5.1 | 4.4 | 4.6 | ND | *See Table 5 |
| Chlorophyll - a at Surface (µg/L) | 1.14 | 2.02 | 0.89 | 7.43 | *See Table 5 |
| E. coli at Surface (CFU/100ml) | ND | 12 | ND | 6.0 | ≥ 235 CFU/100ml |



Satellite Imagery Map of Little Springfield Lake w/ Sampling Locations



Bathymetry Map of Little Springfield Lake

*Table 5 of the State of the Lakes report provides estimated Trophic States of lakes based on the CCME P Framework and the NALMS Chlorophyll-a Framework

halifax.ca/lakewatchers



Long Lake, Halifax, Nova Scotia

SPRING AND SUMMER 2022 – 2023 WATER QUALITY DATA

| Parameter | Spring 2022 5/11/2022 | Summer 2022 8/24/2022 | Spring 2023 4/26/2023 | Summer 2023 8/11/2023 | CCME FWAL Guideline |
|---|--------------------------|--------------------------|--------------------------|--------------------------|---|
| Sampling Team | Consultants | Consultants | Consultants | Collaborative | n/a |
| pH | 6.73 | 6.34 | 5.98 | 5.77 | 6.5 to 9.0 |
| Dissolved Oxygen at Surface (mg/l) | 10.37 | 8.29 | 11.05 | 7.34 | Early life stages: >9.5 mg/L Other life stages >6.5 mg/L |
| Dissolved Chloride at Surface (Outlet) (mg/l) | 64 | 63 | 58 | 40 | Long-Term Exposure: >120 mg/L |
| Dissolved Chloride at Depth (mg/l) | 68 | 68 | 62 | 54 | Long-Term Exposure: >120 mg/L |
| Total Phosphorus at Surface (µg/l) | 2.5 | 2.9 | 3.7 | 3.9 | *See Table 5 |
| Total Phosphorus at Depth (µg/l) | 7.0 | 6.7 | 12.0 | 9.0 | *See Table 5 |
| Chlorophyll - a at Surface (µg/L) | 3.03 | 2.47 | 1.29 | 0.63 | *See Table 5 |
| E. coli at Surface (CFU/100ml) | 2.0 | 4.0 | 2.0 | 4.0 | ≥ 235 CFU/100ml |

*Table 5 of the State of the Lakes report provides estimated Trophic States of lakes based on the CCME P Framework and the NALMS Chlorophyll-a Framework

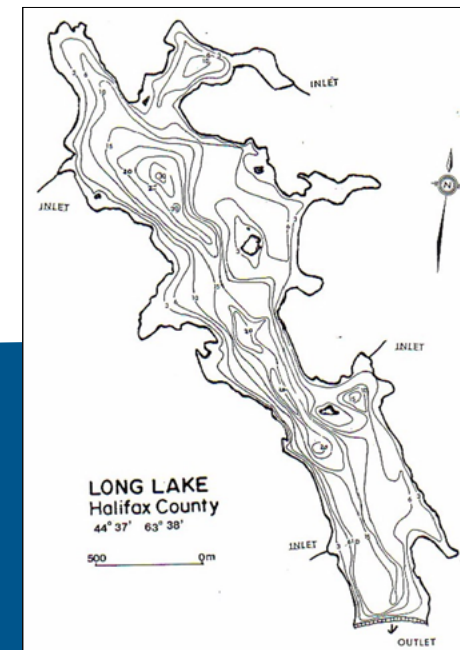
halifax.ca/lakewatchers

HalifACT Acting on
Climate
Together

LakeWatchers



Satellite Imagery Map of Long Lake
w/ Sampling Locations



Bathymetry Map of Long Lake

Long Pond, Halifax, Nova Scotia

SPRING AND SUMMER 2022 – 2023 WATER QUALITY DATA

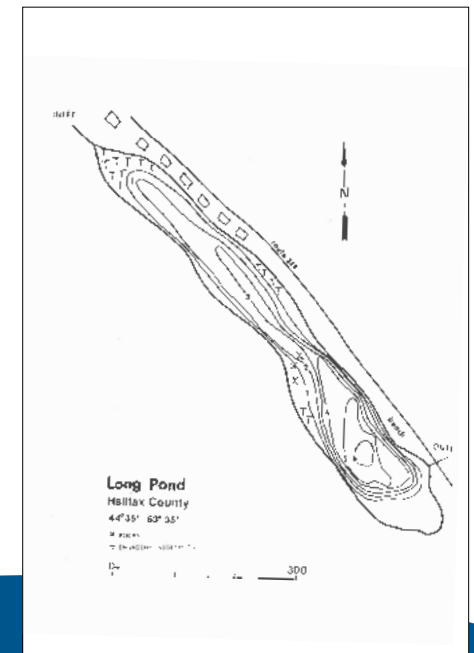
| Parameter | Spring 2022 5/3/2022 | Summer 2022 8/18/2022 | Spring 2023 4/19/2023 | Summer 2023 8/9/2023 | CCME FWAL Guideline |
|---|-------------------------|--------------------------|--------------------------|-------------------------|---|
| Sampling Team | Consultants | Consultants | Consultants | Consultants | n/a |
| pH | 5.77 | 5.96 | 6.55 | 5.26 | 6.5 to 9.0 |
| Dissolved Oxygen at Surface (mg/l) | 13.99 | 6.60 | 11.12 | 6.21 | Early life stages: >9.5 mg/L Other life stages >6.5 mg/L |
| Dissolved Chloride at Surface (Outlet) (mg/l) | 24 | 19 | 29 | 10 | Long-Term Exposure: >120 mg/L |
| Dissolved Chloride at Depth (mg/l) | 23 | 25 | 29 | 19 | Long-Term Exposure: >120 mg/L |
| Total Phosphorus at Surface (µg/l) | 13.0 | 8.5 | 6.6 | 17.0 | *See Table 5 |
| Total Phosphorus at Depth (µg/l) | 7.9 | 140.0 | 8.6 | 130.0 | *See Table 5 |
| Chlorophyll - a at Surface (µg/L) | 0.63 | 3.61 | 1.26 | 0.91 | *See Table 5 |
| E. coli at Surface (CFU/100ml) | ND | 26 | ND | 30 | ≥ 235 CFU/100ml |

*Table 5 of the State of the Lakes report provides estimated Trophic States of lakes based on the CCME P Framework and the NALMS Chlorophyll-a Framework

halifax.ca/lakewatchers



Satellite Imagery Map of Long Pond w/ Sampling Locations



Bathymetry Map of Long Pond

Loon Lake, Westphal, Nova Scotia

SPRING AND SUMMER 2022 – 2023 WATER QUALITY DATA

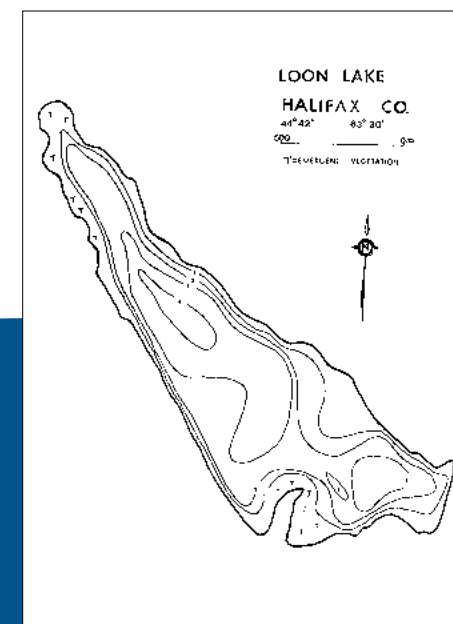
| Parameter | Spring 2022 4/25/2022 | Summer 2022 8/12/2022 | Spring 2023 4/17/2023 | Summer 2023 8/8/2023 | CCME FWAL Guideline |
|---|--------------------------|--------------------------|--------------------------|-------------------------|---|
| Sampling Team | Consultants | Consultants | Consultants | Consultants | n/a |
| pH | 5.00 | 7.38 | 7.22 | 6.89 | 6.5 to 9.0 |
| Dissolved Oxygen at Surface (mg/l) | 11.40 | 7.77 | 11.76 | 7.93 | Early life stages: >9.5 mg/L Other life stages >6.5 mg/L |
| Dissolved Chloride at Surface (Outlet) (mg/l) | 84 | 89 | 76 | 58 | Long-Term Exposure: >120 mg/L |
| Dissolved Chloride at Depth (mg/l) | 85 | 88 | 77 | 59 | Long-Term Exposure: >120 mg/L |
| Total Phosphorus at Surface (µg/l) | 8.8 | ND | 1.5 | 3.8 | *See Table 5 |
| Total Phosphorus at Depth (µg/l) | 8.3 | ND | 1.7 | 4.9 | *See Table 5 |
| Chlorophyll - a at Surface (µg/L) | 1.41 | 1.70 | 3.18 | 4.71 | *See Table 5 |
| E. coli at Surface (CFU/100ml) | ND | ND | ND | 34 | ≥ 235 CFU/100ml |

*Table 5 of the State of the Lakes report provides estimated Trophic States of lakes based on the CCME P Framework and the NALMS Chlorophyll-a Framework

halifax.ca/lakewatchers



Satellite Imagery Map of Loon Lake w/ Sampling Locations



Bathymetry Map of Loon Lake



Lovett Lake, Beechville, Nova Scotia

SPRING AND SUMMER 2022 – 2023 WATER QUALITY DATA

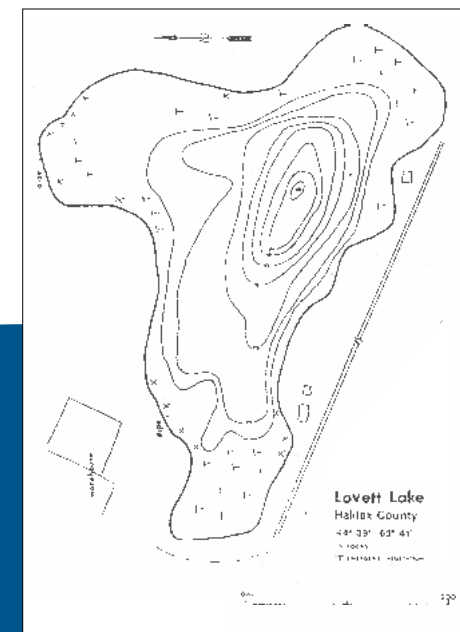
| Parameter | Spring 2022 5/3/2022 | Summer 2022 8/15/2022 | Spring 2023 4/18/2023 | Summer 2023 8/14/2023 | CCME FWAL Guideline |
|---|-------------------------|--------------------------|--------------------------|--------------------------|---|
| Sampling Team | Consultants | Consultants | Consultants | Consultants | n/a |
| pH | 5.97 | 6.97 | 6.54 | 6.86 | 6.5 to 9.0 |
| Dissolved Oxygen at Surface (mg/l) | 14.32 | 8.13 | 10.78 | 8.25 | Early life stages: >9.5 mg/L Other life stages >6.5 mg/L |
| Dissolved Chloride at Surface (Outlet) (mg/l) | 260 | 150 | 250 | 66 | Long-Term Exposure: >120 mg/L |
| Dissolved Chloride at Depth (mg/l) | 260 | 200 | 270 | 190 | Long-Term Exposure: >120 mg/L |
| Total Phosphorus at Surface (µg/l) | 2.9 | ND | 2.4 | 6.5 | *See Table 5 |
| Total Phosphorus at Depth (µg/l) | 3.5 | ND | 1.7 | 3.8 | *See Table 5 |
| Chlorophyll - a at Surface (µg/L) | 0.79 | 4.95 | 0.78 | 5.15 | *See Table 5 |
| E. coli at Surface (CFU/100ml) | ND | 58 | 14 | > 500 | ≥ 235 CFU/100ml |

*Table 5 of the State of the Lakes report provides estimated Trophic States of lakes based on the CCME P Framework and the NALMS Chlorophyll-a Framework

halifax.ca/lakewatchers



Satellite Imagery Map of Lovett Lake w/ Sampling Locations



Bathymetry Map of Lovett Lake

Maynard Lake, Dartmouth, Nova Scotia

SPRING AND SUMMER 2022 – 2023 WATER QUALITY DATA

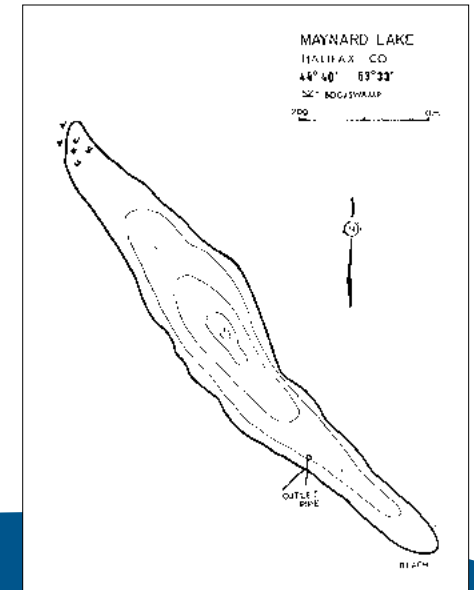
| Parameter | Spring 2022 4/26/2022 | Summer 2022 8/16/2022 | Spring 2023 4/18/2023 | Summer 2023 8/23/2023 | CCME FWAL Guideline |
|---|--------------------------|--------------------------|--------------------------|--------------------------|---|
| Sampling Team | Consultants | Collaborative | Collaborative | Volunteers | n/a |
| pH | 7.95 | 8.10 | 6.99 | 7.11 | 6.5 to 9.0 |
| Dissolved Oxygen at Surface (mg/l) | 9.63 | 7.98 | 11.41 | 7.35 | Early life stages: >9.5 mg/L Other life stages >6.5 mg/L |
| Dissolved Chloride at Surface (Outlet) (mg/l) | 91 | 94 | 87 | 75 | Long-Term Exposure: >120 mg/L |
| Dissolved Chloride at Depth (mg/l) | 91 | 94 | 87 | 89 | Long-Term Exposure: >120 mg/L |
| Total Phosphorus at Surface (µg/l) | 3.2 | ND | 2.4 | 4.9 | *See Table 5 |
| Total Phosphorus at Depth (µg/l) | 4.7 | 2.5 | 3.5 | 56.0 | *See Table 5 |
| Chlorophyll - a at Surface (µg/L) | 2.29 | 2.67 | 2.13 | 2.61 | *See Table 5 |
| E. coli at Surface (CFU/100ml) | 1.0 | 66.0 | 2.0 | ND | ≥ 235 CFU/100ml |

*Table 5 of the State of the Lakes report provides estimated Trophic States of lakes based on the CCME P Framework and the NALMS Chlorophyll-a Framework

halifax.ca/lakewatchers



Satellite Imagery Map of Maynard Lake w/ Sampling Locations



Bathymetry Map of Maynard Lake



McCabe Lake, Lucasville, Nova Scotia

SPRING AND SUMMER 2022 – 2023 WATER QUALITY DATA

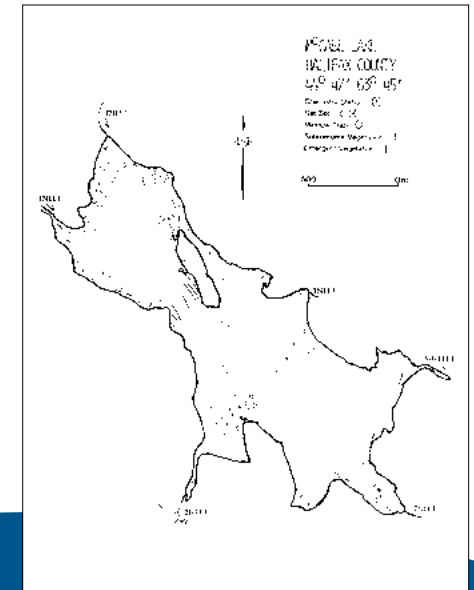
| Parameter | Spring 2022 5/10/2022 | Summer 2022 8/18/2022 | Spring 2023 4/17/2023 | Summer 2023 8/8/2023 | CCME FWAL Guideline |
|---|--------------------------|--------------------------|--------------------------|-------------------------|---|
| Sampling Team | Consultants | Consultants | Consultants | Consultants | n/a |
| pH | 7.09 | 7.04 | 6.70 | 5.95 | 6.5 to 9.0 |
| Dissolved Oxygen at Surface (mg/l) | 10.15 | 7.61 | 11.44 | 6.97 | Early life stages: >9.5 mg/L Other life stages >6.5 mg/L |
| Dissolved Chloride at Surface (Outlet) (mg/l) | 14.00 | 13.00 | 15.00 | 6.30 | Long-Term Exposure: >120 mg/L |
| Dissolved Chloride at Depth (mg/l) | 15.0 | 14.0 | 15.0 | 9.2 | Long-Term Exposure: >120 mg/L |
| Total Phosphorus at Surface (µg/l) | 4.5 | 2.1 | 6.9 | 8.5 | *See Table 5 |
| Total Phosphorus at Depth (µg/l) | 14.0 | 8.1 | 3.3 | 11.0 | *See Table 5 |
| Chlorophyll - a at Surface (µg/L) | 2.35 | 4.13 | 1.49 | 5.82 | *See Table 5 |
| E. coli at Surface (CFU/100ml) | ND | 2.0 | ND | 4.0 | ≥ 235 CFU/100ml |

*Table 5 of the State of the Lakes report provides estimated Trophic States of lakes based on the CCME P Framework and the NALMS Chlorophyll-a Framework

halifax.ca/lakewatchers



Satellite Imagery Map of McCabe Lake w/ Sampling Locations



Bathymetry Map of McCabe Lake

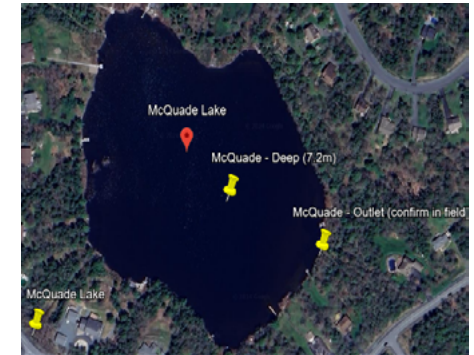
McQuade Lake, Hammonds Plains, Nova Scotia

SPRING AND SUMMER 2022 – 2023 WATER QUALITY DATA

| Parameter | Spring 2022 5/13/2022 | Summer 2022 8/16/2022 | Spring 2023 4/17/2023 | Summer 2023 8/14/2023 | CCME FWAL Guideline |
|---|--------------------------|--------------------------|--------------------------|--------------------------|---|
| Sampling Team | Consultants | Consultants | Consultants | Volunteers | n/a |
| pH | 8.3 | 7.07 | 7.21 | 7.03 | 6.5 to 9.0 |
| Dissolved Oxygen at Surface (mg/l) | 10.46 | 8.59 | 11.23 | 6.72 | Early life stages: >9.5 mg/L Other life stages >6.5 mg/L |
| Dissolved Chloride at Surface (Outlet) (mg/l) | 70 | 56 | 60 | 19 | Long-Term Exposure: >120 mg/L |
| Dissolved Chloride at Depth (mg/l) | 70 | 72 | 60 | 59 | Long-Term Exposure: >120 mg/L |
| Total Phosphorus at Surface (µg/l) | 16.0 | 1.4 | 6.1 | 13.0 | *See Table 5 |
| Total Phosphorus at Depth (µg/l) | 20.0 | 20.0 | 7.4 | 15.0 | *See Table 5 |
| Chlorophyll - a at Surface (µg/L) | 6.68 | 6.37 | 8.59 | 11.0 | *See Table 5 |
| E. coli at Surface (CFU/100ml) | 2.0 | 120.0 | 2.0 | 66.0 | ≥ 235 CFU/100ml |

*Table 5 of the State of the Lakes report provides estimated Trophic States of lakes based on the CCME P Framework and the NALMS Chlorophyll-a Framework

halifax.ca/lakewatchers



Satellite Imagery Map of McQuade Lake w/ Sampling Locations



Bathymetry Map of McQuade Lake

Lake Micmac, Dartmouth, Nova Scotia

SPRING AND SUMMER 2022 – 2023 WATER QUALITY DATA

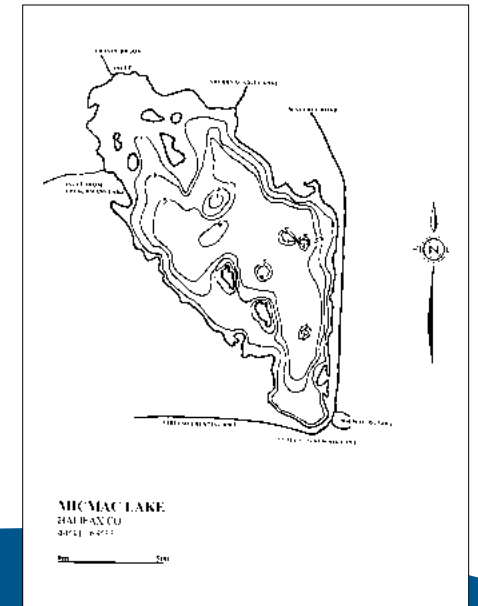
| Parameter | Spring 2022 4/27/2022 | Summer 2022 8/16/2022 | Spring 2023 4/18/2023 | Summer 2023 8/14/2023 | CCME FWAL Guideline |
|---|--------------------------|--------------------------|--------------------------|--------------------------|---|
| Sampling Team | Consultants | Consultants | Collaborative | Collaborative | n/a |
| pH | 8.28 | 7.78 | 7.80 | 7.51 | 6.5 to 9.0 |
| Dissolved Oxygen at Surface (mg/l) | 9.90 | 8.33 | 11.62 | 7.90 | Early life stages: >9.5 mg/L Other life stages >6.5 mg/L |
| Dissolved Chloride at Surface (Outlet) (mg/l) | 250 | 220 | 210 | 120 | Long-Term Exposure: >120 mg/L |
| Dissolved Chloride at Depth (mg/l) | 240 | 220 | 220 | 120 | Long-Term Exposure: >120 mg/L |
| Total Phosphorus at Surface (µg/l) | 4.2 | 3.2 | ND | 5.1 | *See Table 5 |
| Total Phosphorus at Depth (µg/l) | 1.9 | ND | ND | 3.9 | *See Table 5 |
| Chlorophyll - a at Surface (µg/L) | 3.63 | 5.64 | 0.56 | 4.37 | *See Table 5 |
| E. coli at Surface (CFU/100ml) | ND | 16.0 | ND | 38.0 | ≥ 235 CFU/100ml |

*Table 5 of the State of the Lakes report provides estimated Trophic States of lakes based on the CCME P Framework and the NALMS Chlorophyll-a Framework

halifax.ca/lakewatchers



Satellite Imagery Map of Lake Micmac w/ Sampling Locations



Bathymetry Map of Lake Micmac

Mill Lake, Head of St. Margarets Bay, Nova Scotia

SPRING AND SUMMER 2022 – 2023 WATER QUALITY DATA

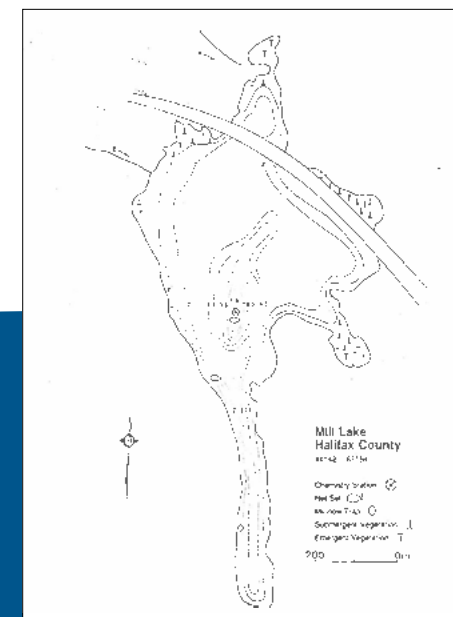
| Parameter | Spring 2022 13/5/2022 | Summer 2022 29/8/2022 | Spring 2023 20/4/2023 | Summer 2023 10/8/2023 | CCME FWAL Guideline |
|---|--------------------------|--------------------------|--------------------------|--------------------------|---|
| Sampling Team | Consultants | Consultants | Consultants | Consultants | n/a |
| pH | 5.71 | 6.26 | 5.59 | NA | 6.5 to 9.0 |
| Dissolved Oxygen at Surface (mg/l) | 10.74 | 8.23 | 11.0 | NA | Early life stages: >9.5 mg/L Other life stages >6.5 mg/L |
| Dissolved Chloride at Surface (Outlet) (mg/l) | 4.8 | 4.5 | 6.7 | 5.5 | Long-Term Exposure: >120 mg/L |
| Dissolved Chloride at Depth (mg/l) | 5.0 | 7.7 | 5.7 | 11.0 | Long-Term Exposure: >120 mg/L |
| Total Phosphorus at Surface (µg/l) | 3.3 | 2.1 | 3.7 | 2.9 | *See Table 5 |
| Total Phosphorus at Depth (µg/l) | 3.3 | 10.0 | 4.4 | 14.0 | *See Table 5 |
| Chlorophyll - a at Surface (µg/L) | 1.74 | 1.96 | 1.34 | 1.80 | *See Table 5 |
| E. coli at Surface (CFU/100ml) | ND | ND | ND | 12.0 | ≥ 235 CFU/100ml |

*Table 5 of the State of the Lakes report provides estimated Trophic States of lakes based on the CCME P Framework and the NALMS Chlorophyll-a Framework

halifax.ca/lakewatchers



Satellite Imagery Map of Mill Lake w/ Sampling Locations



Bathymetry Map of Mill Lake

Miller Lake, Fall River, Nova Scotia

SPRING AND SUMMER 2022 – 2023 WATER QUALITY DATA

| Parameter | Spring 2022 5/2/2022 | Summer 2022 8/17/2022 | Spring 2023 4/20/2023 | Summer 2023 8/9/2023 | CCME FWAL Guideline |
|---|-------------------------|--------------------------|--------------------------|-------------------------|---|
| Sampling Team | Consultants | Consultants | Consultants | Consultants | n/a |
| pH | 7.71 | 7.19 | 6.94 | 6.77 | 6.5 to 9.0 |
| Dissolved Oxygen at Surface (mg/l) | 10.68 | 8.04 | 11.06 | 7.48 | Early life stages: >9.5 mg/L Other life stages >6.5 mg/L |
| Dissolved Chloride at Surface (Outlet) (mg/l) | 25 | 25 | 27 | 13 | Long-Term Exposure: >120 mg/L |
| Dissolved Chloride at Depth (mg/l) | 30 | 28 | 25 | 29 | Long-Term Exposure: >120 mg/L |
| Total Phosphorus at Surface (µg/l) | 4.3 | ND | 3.5 | 6.9 | *See Table 5 |
| Total Phosphorus at Depth (µg/l) | 5.0 | 2.4 | 4.6 | 7.8 | *See Table 5 |
| Chlorophyll - a at Surface (µg/L) | 1.92 | 2.03 | 1.16 | 2.55 | *See Table 5 |
| E. coli at Surface (CFU/100ml) | 2.0 | 2.0 | ND | 10.0 | ≥ 235 CFU/100ml |

*Table 5 of the State of the Lakes report provides estimated Trophic States of lakes based on the CCME P Framework and the NALMS Chlorophyll-a Framework

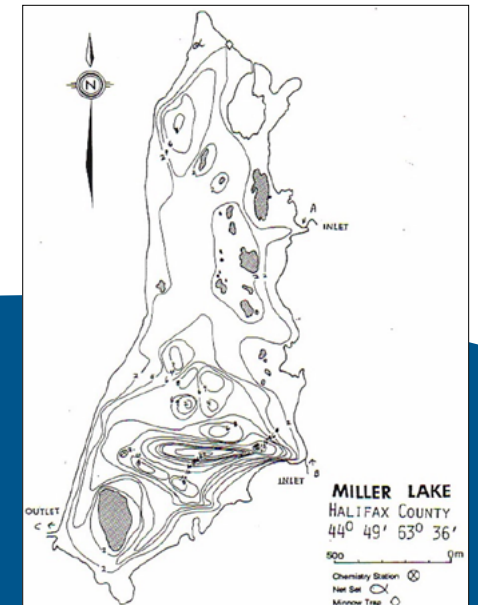
halifax.ca/lakewatchers

HalifACT Acting on
Climate
Together

LakeWatchers



Satellite Imagery Map of Miller Lake
w/ Sampling Locations



Bathymetry Map of Miller Lake

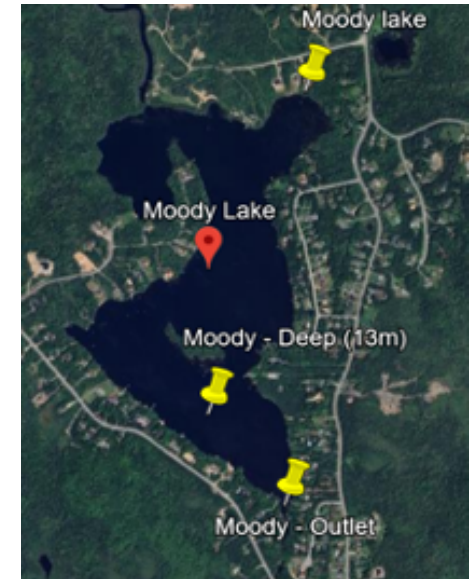
Moody Lake, Williamswood, Nova Scotia

SPRING AND SUMMER 2022 – 2023 WATER QUALITY DATA

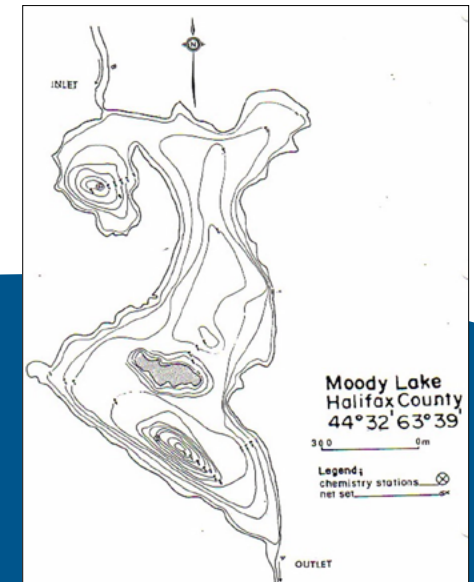
| Parameter | Spring 2022 5/11/2022 | Summer 2022 9/1/2022 | Spring 2023 4/19/2023 | Summer 2023 8/23/2023 | CCME FWAL Guideline |
|---|--------------------------|-------------------------|--------------------------|--------------------------|---|
| Sampling Team | Consultants | Consultants | Consultants | Consultants | n/a |
| pH | 6.56 | 6.62 | 5.57 | 5.33 | 6.5 to 9.0 |
| Dissolved Oxygen at Surface (mg/l) | 10.15 | 8.11 | 11.08 | 7.16 | Early life stages: >9.5 mg/L Other life stages >6.5 mg/L |
| Dissolved Chloride at Surface (Outlet) (mg/l) | 12.0 | 9.3 | 13.0 | 6.5 | Long-Term Exposure: >120 mg/L |
| Dissolved Chloride at Depth (mg/l) | 12.0 | 11.0 | 13.0 | 9.7 | Long-Term Exposure: >120 mg/L |
| Total Phosphorus at Surface (µg/l) | 6.0 | 12.0 | 8.1 | ND | *See Table 5 |
| Total Phosphorus at Depth (µg/l) | 7.2 | 14.0 | 7.6 | 25.0 | *See Table 5 |
| Chlorophyll - a at Surface (µg/L) | 1.52 | 2.29 | 0.76 | 0.88 | *See Table 5 |
| E. coli at Surface (CFU/100ml) | 32.0 | 2.0 | 4.0 | ND | ≥ 235 CFU/100ml |

*Table 5 of the State of the Lakes report provides estimated Trophic States of lakes based on the CCME P Framework and the NALMS Chlorophyll-a Framework

halifax.ca/lakewatchers



Satellite Imagery Map of Moody Lake w/ Sampling Locations



Bathymetry Map of Moody Lake



Morris Lake, Dartmouth, Nova Scotia

SPRING AND SUMMER 2022 – 2023 WATER QUALITY DATA

| Parameter | Spring 2022 4/26/2022 | Summer 2022 8/22/2022 | Spring 2023 4/10/2023 | Summer 2023 8/29/2023 | CCME FWAL Guideline |
|---|--------------------------|--------------------------|--------------------------|--------------------------|---|
| Sampling Team | Consultants | Volunteers | Volunteers | Volunteers | n/a |
| pH | 7.14 | 7.54 | 7.62 | 7.42 | 6.5 to 9.0 |
| Dissolved Oxygen at Surface (mg/l) | 10.89 | 7.34 | 10.92 | 8.20 | Early life stages: >9.5 mg/L Other life stages >6.5 mg/L |
| Dissolved Chloride at Surface (Outlet) (mg/l) | 110 | 93 | 91 | 58 | Long-Term Exposure: >120 mg/L |
| Dissolved Chloride at Depth (mg/l) | 100 | 93 | 90 | 69 | Long-Term Exposure: >120 mg/L |
| Total Phosphorus at Surface (µg/l) | 7.5 | 3.9 | 2.2 | 3.8 | *See Table 5 |
| Total Phosphorus at Depth (µg/l) | 2.1 | 8.2 | 3.1 | ND | *See Table 5 |
| Chlorophyll - a at Surface (µg/L) | 0.81 | 2.12 | 0.53 | 1.52 | *See Table 5 |
| E. coli at Surface (CFU/100ml) | ND | ND | ND | 8.0 | ≥ 235 CFU/100ml |

*Table 5 of the State of the Lakes report provides estimated Trophic States of lakes based on the CCME P Framework and the NALMS Chlorophyll-a Framework

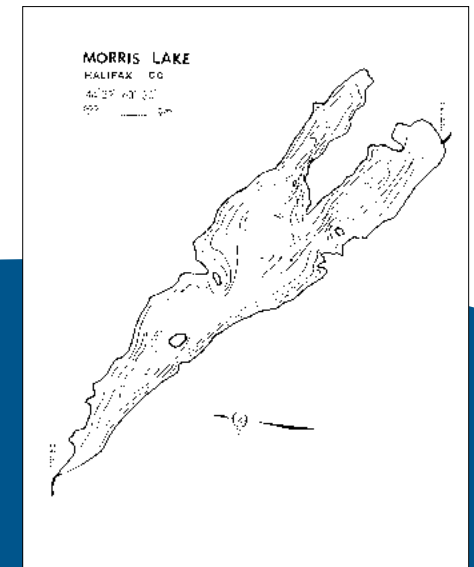
halifax.ca/lakewatchers

HalifACT Acting on
Climate
Together

LakeWatchers



Satellite Imagery Map of Morris Lake w/ Sampling Locations



Bathymetry Map of Morris Lake



Oat Hill Lake, Dartmouth, Nova Scotia

SPRING AND SUMMER 2022 – 2023 WATER QUALITY DATA

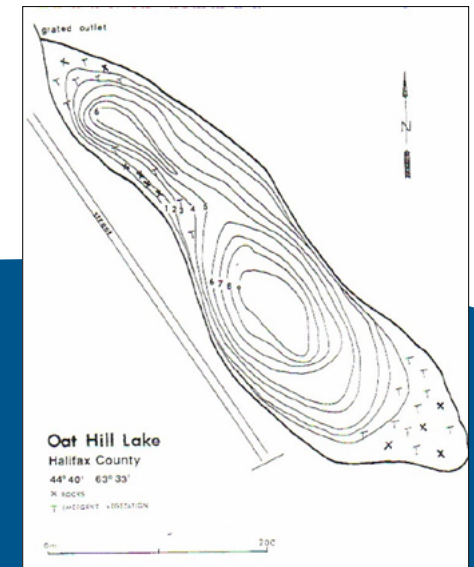
| Parameter | Spring 2022 4/28/2022 | Summer 2022 8/28/2022 | Spring 2023 4/23/2023 | Summer 2023 8/28/2023 | CCME FWAL Guideline |
|---|--------------------------|--------------------------|--------------------------|--------------------------|---|
| Sampling Team | Consultants | Volunteers | Volunteers | Volunteers | n/a |
| pH | 7.73 | 7.12 | 7.75 | 7.42 | 6.5 to 9.0 |
| Dissolved Oxygen at Surface (mg/l) | 11.08 | 81.50 | 11.20 | 7.00 | Early life stages: >9.5 mg/L Other life stages >6.5 mg/L |
| Dissolved Chloride at Surface (Outlet) (mg/l) | 190 | 140 | 180 | 83 | Long-Term Exposure: >120 mg/L |
| Dissolved Chloride at Depth (mg/l) | 190 | 160 | 180 | 170 | Long-Term Exposure: >120 mg/L |
| Total Phosphorus at Surface (µg/l) | 6.1 | 7.1 | 5.2 | 14.0 | *See Table 5 |
| Total Phosphorus at Depth (µg/l) | 10.0 | 22.0 | 14.0 | 55.0 | *See Table 5 |
| Chlorophyll - a at Surface (µg/L) | 6.48 | 4.54 | 1.72 | 8.08 | *See Table 5 |
| E. coli at Surface (CFU/100ml) | ND | 10.0 | ND | 14.0 | ≥ 235 CFU/100ml |

*Table 5 of the State of the Lakes report provides estimated Trophic States of lakes based on the CCME P Framework and the NALMS Chlorophyll-a Framework

halifax.ca/lakewatchers



Satellite Imagery Map of Oat Hill Lake w/ Sampling Locations



Bathymetry Map of Oat Hill Lake



Paper Mill Lake, Bedford, Nova Scotia

SPRING AND SUMMER 2022 – 2023 WATER QUALITY DATA

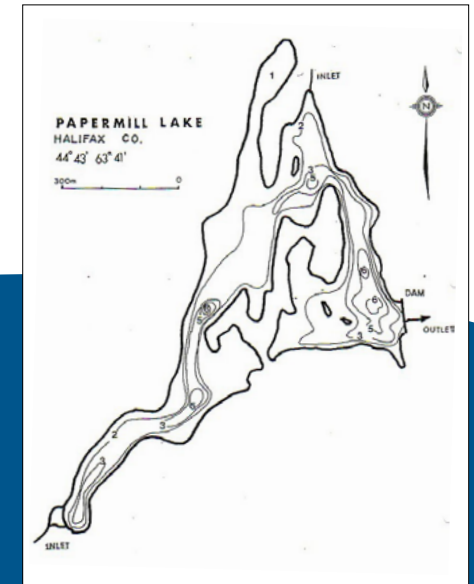
| Parameter | Spring 2022 4/29/2022 | Summer 2022 8/23/2022 | Spring 2023 4/19/2023 | Summer 2023 8/11/2023 | CCME FWAL Guideline |
|---|--------------------------|--------------------------|--------------------------|--------------------------|---|
| Sampling Team | Consultants | Consultants | Consultants | Consultants | n/a |
| pH | 6.56 | 7.30 | 6.79 | 6.88 | 6.5 to 9.0 |
| Dissolved Oxygen at Surface (mg/l) | 10.07 | 8.49 | 10.59 | 8.16 | Early life stages: >9.5 mg/L Other life stages >6.5 mg/L |
| Dissolved Chloride at Surface (Outlet) (mg/l) | 73 | 80 | 78 | 31 | Long-Term Exposure: >120 mg/L |
| Dissolved Chloride at Depth (mg/l) | 75 | 77 | 80 | 37 | Long-Term Exposure: >120 mg/L |
| Total Phosphorus at Surface (µg/l) | 2.6 | ND | 1.8 | 3.9 | *See Table 5 |
| Total Phosphorus at Depth (µg/l) | 3.3 | ND | 2.2 | 3.0 | *See Table 5 |
| Chlorophyll - a at Surface (µg/L) | 0.81 | 1.66 | 1.22 | 1.11 | *See Table 5 |
| E. coli at Surface (CFU/100ml) | 4.0 | 6.0 | ND | 30 | ≥ 235 CFU/100ml |

*Table 5 of the State of the Lakes report provides estimated Trophic States of lakes based on the CCME P Framework and the NALMS Chlorophyll-a Framework

halifax.ca/lakewatchers



Satellite Imagery Map of Paper Mill Lake w/ Sampling Locations



Bathymetry Map of Paper Mill Lake



Penhorn Lake, Dartmouth, Nova Scotia

SPRING AND SUMMER 2022 – 2023 WATER QUALITY DATA

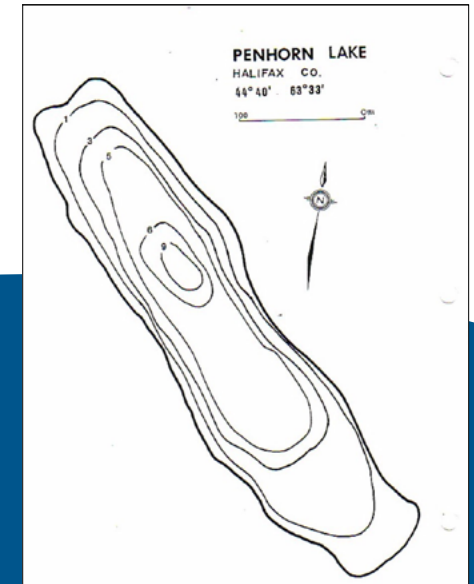
| Parameter | Spring 2022 4/26/2022 | Summer 2022 8/12/2022 | Spring 2023 4/18/2023 | Summer 2023 8/21/2023 | CCME FWAL Guideline |
|---|--------------------------|--------------------------|--------------------------|--------------------------|---|
| Sampling Team | Consultants | Consultants | Collaborative | Volunteers | n/a |
| pH | 8.06 | 7.64 | 7.36 | 7.75 | 6.5 to 9.0 |
| Dissolved Oxygen at Surface (mg/l) | 9.87 | 7.58 | 11.21 | 7.00 | Early life stages: >9.5 mg/L Other life stages >6.5 mg/L |
| Dissolved Chloride at Surface (Outlet) (mg/l) | 140 | 120 | 120 | 93 | Long-Term Exposure: >120 mg/L |
| Dissolved Chloride at Depth (mg/l) | 140 | 130 | 130 | 130 | Long-Term Exposure: >120 mg/L |
| Total Phosphorus at Surface (µg/l) | 10.0 | ND | 5.3 | 7.1 | *See Table 5 |
| Total Phosphorus at Depth (µg/l) | 6.4 | 110.0 | 6.0 | 52.0 | *See Table 5 |
| Chlorophyll - a at Surface (µg/L) | 1.43 | 6.27 | 1.01 | 14.6 | *See Table 5 |
| E. coli at Surface (CFU/100ml) | 1.0 | 16.0 | 6.0 | 14.0 | ≥ 235 CFU/100ml |

*Table 5 of the State of the Lakes report provides estimated Trophic States of lakes based on the CCME P Framework and the NALMS Chlorophyll-a Framework

halifax.ca/lakewatchers



Satellite Imagery Map of Penhorn Lake w/ Sampling Locations



Bathymetry Map of Penhorn Lake



Petpeswick Lake, Musquodoboit Harbour, Nova Scotia

SPRING AND SUMMER 2022 – 2023 WATER QUALITY DATA

| Parameter | Spring 2022 5/16/2022 | Summer 2022 8/30/2022 | Spring 2023 5/3/2023 | Summer 2023 8/22/2023 | CCME FWAL Guideline |
|---|--------------------------|--------------------------|-------------------------|--------------------------|---|
| Sampling Team | Consultants | Consultants | Consultants | Consultants | n/a |
| pH | 8.52 | 6.79 | 6.08 | 6.74 | 6.5 to 9.0 |
| Dissolved Oxygen at Surface (mg/l) | 10.34 | 8.40 | 11.77 | 8.45 | Early life stages: >9.5 mg/L Other life stages >6.5 mg/L |
| Dissolved Chloride at Surface (Outlet) (mg/l) | 14 | 13 | 13 | 12 | Long-Term Exposure: >120 mg/L |
| Dissolved Chloride at Depth (mg/l) | 14 | 13 | 13 | 13 | Long-Term Exposure: >120 mg/L |
| Total Phosphorus at Surface (µg/l) | 1.4 | 2.0 | 1.4 | 1.5 | *See Table 5 |
| Total Phosphorus at Depth (µg/l) | 1.5 | 3.1 | 1.1 | 3.2 | *See Table 5 |
| Chlorophyll - a at Surface (µg/L) | 1.21 | 1.12 | 1.07 | 1.77 | *See Table 5 |
| E. coli at Surface (CFU/100ml) | ND | 2.0 | ND | ND | ≥ 235 CFU/100ml |

*Table 5 of the State of the Lakes report provides estimated Trophic States of lakes based on the CCME P Framework and the NALMS Chlorophyll-a Framework

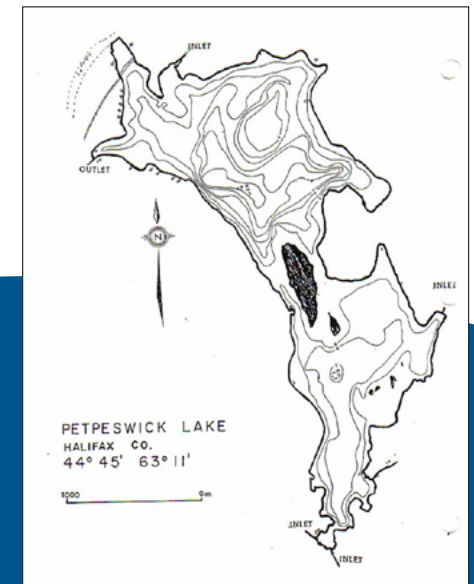
halifax.ca/lakewatchers

HalifACT Acting on
Climate
Together

LakeWatchers



Satellite Imagery Map of Petpeswick Lake w/ Sampling Locations



Bathymetry Map of Petpeswick Lake



Pine Lake, Devon, Nova Scotia

SPRING AND SUMMER 2022 – 2023 WATER QUALITY DATA

| Parameter | Spring 2022 5/26/2022 | Summer 2022 8/23/2022 | Spring 2023 4/24/2023 | Summer 2023 8/15/2023 | CCME FWAL Guideline |
|---|--------------------------|--------------------------|--------------------------|--------------------------|---|
| Sampling Team | Consultants | Consultants | Consultants | Consultants | n/a |
| pH | 5.16 | 5.43 | 5.23 | 5.07 | 6.5 to 9.0 |
| Dissolved Oxygen at Surface (mg/l) | 9.98 | 8.40 | 11.30 | 8.00 | Early life stages: >9.5 mg/L Other life stages >6.5 mg/L |
| Dissolved Chloride at Surface (Outlet) (mg/l) | 4.5 | 3.9 | 4.0 | 3.4 | Long-Term Exposure: >120 mg/L |
| Dissolved Chloride at Depth (mg/l) | 4.7 | 3.9 | 4.0 | 5.3 | Long-Term Exposure: >120 mg/L |
| Total Phosphorus at Surface (µg/l) | 6.6 | ND | 7.5 | 4.0 | *See Table 5 |
| Total Phosphorus at Depth (µg/l) | 1.5 | 3.1 | 1.1 | 3.2 | *See Table 5 |
| Chlorophyll - a at Surface (µg/L) | 1.56 | 3.15 | 1.37 | 3.19 | *See Table 5 |
| E. coli at Surface (CFU/100ml) | ND | ND | ND | ND | ≥ 235 CFU/100ml |



Satellite Imagery Map of Pine Lake w/ Sampling Locations



Bathymetry Map of Pine Lake

*Table 5 of the State of the Lakes report provides estimated Trophic States of lakes based on the CCME P Framework and the NALMS Chlorophyll-a Framework

halifax.ca/lakewatchers

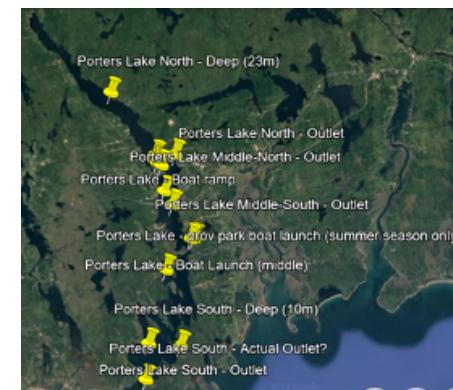
Porters Lake (South and Mid-South), Nova Scotia

SPRING AND SUMMER 2022 – 2023 WATER QUALITY DATA

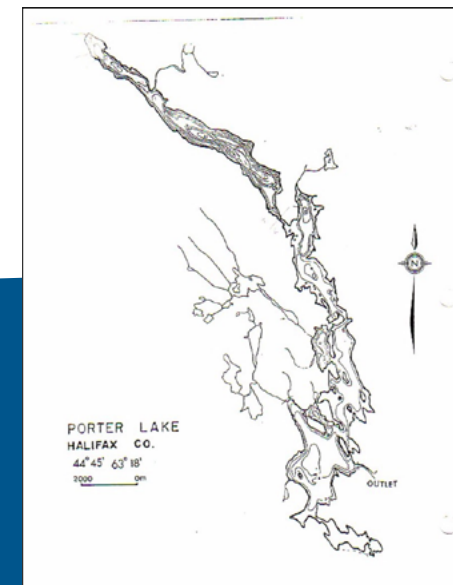
| Parameter | Station | Spring 2022 5/13/2022 | Summer 2022 8/23/2022 | Spring 2023 4/25/2023 | Summer 2023 8/15/2023 | CCME FWAL Guideline |
|--|-----------|--------------------------|--------------------------|--------------------------|--------------------------|---|
| Sampling Team | | Consultants | Consultants | Consultants | Consultants | n/a |
| pH | South | 8.53 | 7.78 | 7.84 | 7.87 | 6.5 to 9.0 |
| | Mid-South | 8.04 | 7.56 | 7.46 | 6.40 | |
| Dissolved Oxygen at Surface (mg/l) | South | 9.78 | 7.87 | 10.16 | 8.61 | Early life stages: >9.5 mg/L Other life stages >6.5 mg/L |
| | Mid-South | 9.60 | 7.98 | 10.71 | 7.76 | |
| Dissolved Chloride at Surface (Outlet) (mg/l) | South | 5700 | 9900 | 9100 | 2300 | Long-Term Exposure: >120 mg/L |
| | Mid-South | 1700 | 5200 | 4600 | 570 | |
| Dissolved Chloride at Depth (mg/l) | South | 13000 | 14000 | 15000 | 14000 | |
| | Mid-South | 10000 | 12000 | 13000 | 12000 | |
| Total Phosphorus at Surface (µg/l) | South | 5.7 | ND | 9.5 | 6.9 | *See Table 5 |
| | Mid-South | 2.7 | 11.0 | 3.7 | 5.3 | |
| Total Phosphorus at Depth (µg/l) | South | 27.0 | 190.0 | 42.0 | 560.0 | *See Table 5 |
| | Mid-South | 5.4 | ND | 5.5 | 3.9 | |
| Chlorophyll - a at Surface (µg/L) | South | 1.25 | 1.41 | 0.44 | 10.40 | *See Table 5 |
| | Mid-South | 1.36 | 0.98 | 0.97 | 2.96 | |
| E. coli at Surface (CFU/100ml) | South | ND | ND | ND | 10.0 | ≥ 235 CFU/100ml |
| | Mid-South | ND | ND | 2.0 | 20.0 | |

*Table 5 of the State of the Lakes report provides estimated Trophic States of lakes based on the CCME P Framework and the NALMS Chlorophyll-a Framework

halifax.ca/lakewatchers



Satellite Imagery Map of Porters Lake w/ Sampling Locations



Bathymetry Map of Porters Lake

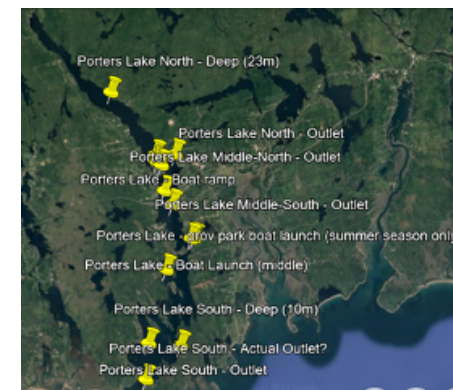
Porters Lake (North and Mid-North), Nova Scotia

SPRING AND SUMMER 2022 – 2023 WATER QUALITY DATA

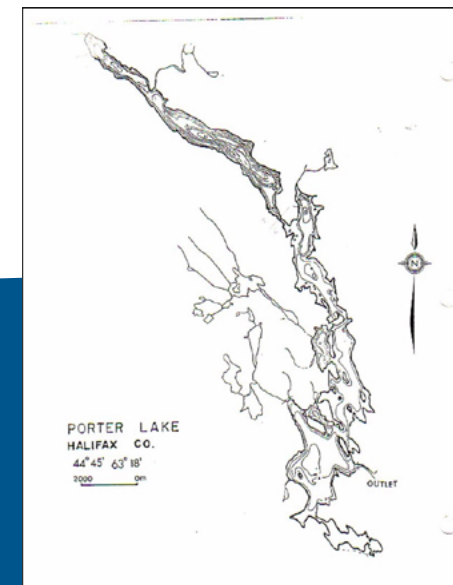
| Parameter | Station | Spring 2022 5/16/2022 | Summer 2022 8/23/2022 | Spring 2023 4/25/2023 | Summer 2023 8/15/2023 | CCME FWAL Guideline |
|---|-----------|--------------------------|--------------------------|--------------------------|--------------------------|---|
| Sampling Team | | Consultants | Consultants | Consultants | Consultants | n/a |
| pH | North | 7.78 | 6.76 | 6.60 | 5.42 | 6.5 to 9.0 |
| | Mid-North | 7.89 | 7.41 | 7.26 | 6.03 | |
| Dissolved Oxygen at Surface (mg/l) | North | 10.48 | 8.13 | 11.7 | 7.56 | Early life stages: >9.5 mg/L Other life stages >6.5 mg/L |
| | Mid-North | 9.64 | 8.15 | 10.83 | 7.85 | |
| Dissolved Chloride at Surface (Outlet) (mg/l) | North | 800 | 390 | 420 | 150 | Long-Term Exposure: >120 mg/L |
| | Mid-North | 1400 | 1900 | 1700 | 230 | |
| Dissolved Chloride at Depth (mg/l) | North | 1900 | 620 | 780 | 900 | |
| | Mid-North | 11000 | 11000 | 12000 | 12000 | |
| Total Phosphorus at Surface (µg/l) | North | 3.3 | 14.0 | 5.8 | 8.6 | *See Table 5 |
| | Mid-North | 2.1 | 9.5 | 3.6 | 5.5 | |
| Total Phosphorus at Depth (µg/l) | North | 8.6 | ND | 4.5 | 3.3 | *See Table 5 |
| | Mid-North | 50.0 | 26.0 | 7.1 | 1.4 | |
| Chlorophyll - a at Surface (µg/L) | North | 0.88 | 3.37 | 0.55 | 8.20 | *See Table 5 |
| | Mid-North | 2.47 | 1.23 | 1.24 | 3.44 | |
| E. coli at Surface (CFU/100ml) | North | ND | ND | ND | 8.0 | ≥ 235 CFU/100ml |
| | Mid-North | 2.0 | ND | ND | 8.0 | |

*Table 5 of the State of the Lakes report provides estimated Trophic States of lakes based on the CCME P Framework and the NALMS Chlorophyll-a Framework

halifax.ca/lakewatchers



Satellite Imagery Map of Porters Lake w/ Sampling Locations



Bathymetry Map of Porters Lake

Powder Mill Lake, Waverley, Nova Scotia

SPRING AND SUMMER 2022 – 2023 WATER QUALITY DATA

| Parameter | Spring 2022 5/5/2022 | Summer 2022 8/22/2022 | Spring 2023 4/28/2023 | Summer 2023 8/15/2023 | CCME FWAL Guideline |
|---|-------------------------|--------------------------|--------------------------|--------------------------|---|
| Sampling Team | Consultants | Consultants | Volunteers | Volunteers | n/a |
| pH | 8.22 | 7.62 | 7.76 | 7.29 | 6.5 to 9.0 |
| Dissolved Oxygen at Surface (mg/l) | 11.04 | 8.58 | 10.01 | 7.76 | Early life stages: >9.5 mg/L Other life stages >6.5 mg/L |
| Dissolved Chloride at Surface (Outlet) (mg/l) | 54 | 65 | 51 | 41 | Long-Term Exposure: >120 mg/L |
| Dissolved Chloride at Depth (mg/l) | 44 | 54 | 45 | 52 | Long-Term Exposure: >120 mg/L |
| Total Phosphorus at Surface (µg/l) | 6.2 | ND | 1.7 | 5.7 | *See Table 5 |
| Total Phosphorus at Depth (µg/l) | 3.7 | ND | 5.3 | 5.6 | *See Table 5 |
| Chlorophyll - a at Surface (µg/L) | 3.95 | 1.95 | 1.91 | 5.34 | *See Table 5 |
| E. coli at Surface (CFU/100ml) | ND | ND | ND | 2.0 | ≥ 235 CFU/100ml |

*Table 5 of the State of the Lakes report provides estimated Trophic States of lakes based on the CCME P Framework and the NALMS Chlorophyll-a Framework

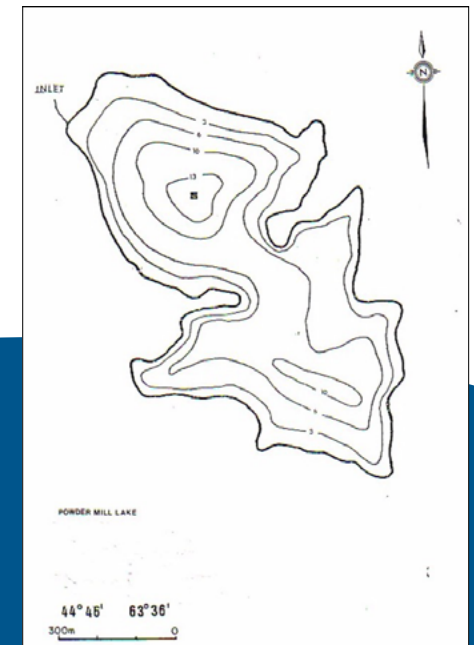
halifax.ca/lakewatchers

HalifACT Acting on
Climate
Together

LakeWatchers



Satellite Imagery Map of Powder Mill Lake w/ Sampling Locations



Bathymetry Map of Powder Mill Lake



Quarry Lake, Halifax, Nova Scotia

SPRING AND SUMMER 2022 – 2023 WATER QUALITY DATA

| Parameter | Spring 2022 5/16/2022 | Summer 2022 8/25/2022 | Spring 2023 5/4/2023 | Summer 2023 8/16/2023 | CCME FWAL Guideline |
|---|--------------------------|--------------------------|-------------------------|--------------------------|---|
| Sampling Team | Consultants | Consultants | Consultants | Consultants | n/a |
| pH | 5.40 | 6.13 | 5.22 | 5.58 | 6.5 to 9.0 |
| Dissolved Oxygen at Surface (mg/l) | 10.1 | 8.51 | 10.74 | 7.68 | Early life stages: >9.5 mg/L Other life stages >6.5 mg/L |
| Dissolved Chloride at Surface (Outlet) (mg/l) | 76 | 69 | 49 | 26 | Long-Term Exposure: >120 mg/L |
| Dissolved Chloride at Depth (mg/l) | 73 | 72 | 50 | 51 | Long-Term Exposure: >120 mg/L |
| Total Phosphorus at Surface (µg/l) | 2.8 | ND | 2.3 | 2.8 | *See Table 5 |
| Total Phosphorus at Depth (µg/l) | 2.6 | 6.1 | 2.9 | 10.0 | *See Table 5 |
| Chlorophyll - a at Surface (µg/L) | 0.86 | 1.36 | 0.39 | 2.46 | *See Table 5 |
| E. coli at Surface (CFU/100ml) | ND | 8.0 | ND | ND | ≥ 235 CFU/100ml |

*Table 5 of the State of the Lakes report provides estimated Trophic States of lakes based on the CCME P Framework and the NALMS Chlorophyll-a Framework

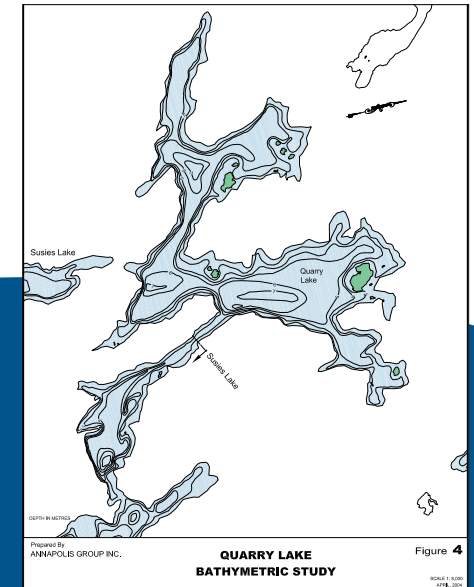
halifax.ca/lakewatchers

HalifACT Acting on
Climate
Together

LakeWatchers



Satellite Imagery Map of Quarry Lake w/ Sampling Locations



Bathymetry Map of Quarry Lake



Ragged Lake, Goodwood, Nova Scotia

SPRING AND SUMMER 2022 – 2023 WATER QUALITY DATA

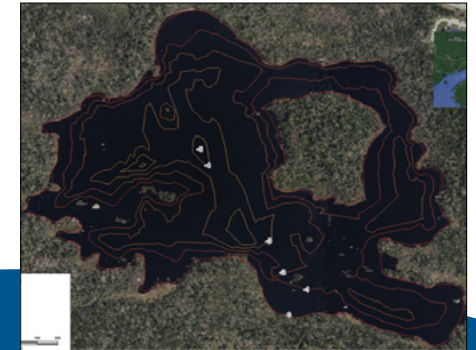
| Parameter | Spring 2022 5/18/2022 | Summer 2022 8/25/2022 | Spring 2023 4/26/2023 | Summer 2023 8/21/2023 | CCME FWAL Guideline |
|---|--------------------------|--------------------------|--------------------------|--------------------------|---|
| Sampling Team | Consultants | Consultants | Consultants | Consultants | n/a |
| pH | 4.76 | 4.90 | 4.87 | 5.05 | 6.5 to 9.0 |
| Dissolved Oxygen at Surface (mg/l) | 10.18 | 8.22 | 10.20 | 7.72 | Early life stages: >9.5 mg/L Other life stages >6.5 mg/L |
| Dissolved Chloride at Surface (Outlet) (mg/l) | 41 | 36 | 34 | 22 | Long-Term Exposure: >120 mg/L |
| Dissolved Chloride at Depth (mg/l) | 39 | 37 | 33 | 22 | Long-Term Exposure: >120 mg/L |
| Total Phosphorus at Surface (µg/l) | 9.1 | 6.5 | 5.9 | 9.4 | *See Table 5 |
| Total Phosphorus at Depth (µg/l) | 25.0 | 6.7 | 6.1 | 12.0 | *See Table 5 |
| Chlorophyll - a at Surface (µg/L) | 0.54 | 1.15 | 0.79 | 1.44 | *See Table 5 |
| E. coli at Surface (CFU/100ml) | ND | 2.0 | ND | 10.0 | ≥ 235 CFU/100ml |

*Table 5 of the State of the Lakes report provides estimated Trophic States of lakes based on the CCME P Framework and the NALMS Chlorophyll-a Framework

halifax.ca/lakewatchers



Satellite Imagery Map of Ragged Lake w/ Sampling Locations



Bathymetry Map of Ragged Lake

Rocky Lake (NE Basin), Waverley, Nova Scotia

SPRING AND SUMMER 2022 – 2023 WATER QUALITY DATA

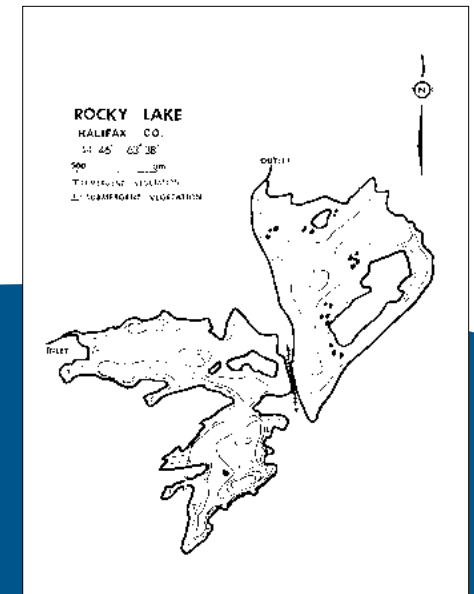
| Parameter | Spring 2022 5/16/2022 | Summer 2022 8/18/2022 | Spring 2023 4/19/2023 | Summer 2023 8/13/2023 | CCME FWAL Guideline |
|---|--------------------------|--------------------------|--------------------------|--------------------------|---|
| Sampling Team | Consultants | Consultants | Consultants | Volunteers | n/a |
| pH | 7.03 | 7.74 | 6.80 | 7.86 | 6.5 to 9.0 |
| Dissolved Oxygen at Surface (mg/l) | 9.96 | 8.19 | 10.89 | 7.27 | Early life stages: >9.5 mg/L Other life stages >6.5 mg/L |
| Dissolved Chloride at Surface (Outlet) (mg/l) | 91 | 99 | 73 | 55 | Long-Term Exposure: >120 mg/L |
| Dissolved Chloride at Depth (mg/l) | 93 | 98 | 74 | 56 | Long-Term Exposure: >120 mg/L |
| Total Phosphorus at Surface (µg/l) | 2.2 | ND | 2.8 | 4.1 | *See Table 5 |
| Total Phosphorus at Depth (µg/l) | 2.9 | ND | 2.7 | 3.8 | *See Table 5 |
| Chlorophyll - a at Surface (µg/L) | 3.12 | 6.00 | 1.38 | 4.71 | *See Table 5 |
| E. coli at Surface (CFU/100ml) | ND | 4 | ND | 2 | ≥ 235 CFU/100ml |

*Table 5 of the State of the Lakes report provides estimated Trophic States of lakes based on the CCME P Framework and the NALMS Chlorophyll-a Framework

halifax.ca/lakewatchers



Satellite Imagery Map of Rocky Lake w/ Sampling Locations



Bathymetry Map of Rocky Lake

Russell Lake, Dartmouth, Nova Scotia

SPRING AND SUMMER 2022 – 2023 WATER QUALITY DATA

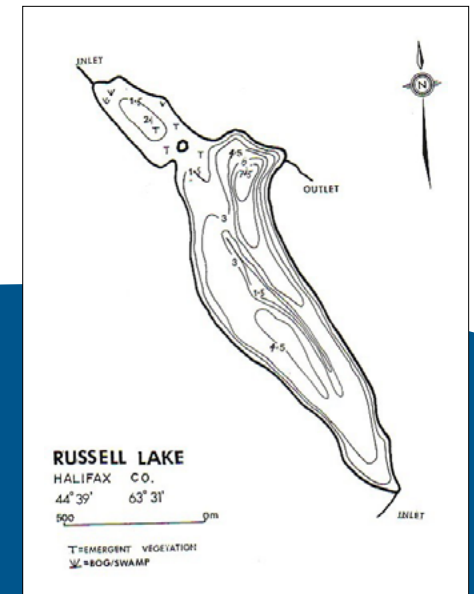
| Parameter | Spring 2022 4/28/2022 | Summer 2022 8/22/2022 | Spring 2023 5/11/2023 | Summer 2023 9/7/2023 | CCME FWAL Guideline |
|---|--------------------------|--------------------------|--------------------------|-------------------------|---|
| Sampling Team | Consultants | Volunteers | Volunteers | Volunteers | n/a |
| pH | 6.81 | 7.44 | 7.83 | 7.59 | 6.5 to 9.0 |
| Dissolved Oxygen at Surface (mg/l) | 9.77 | 7.56 | 10.54 | 8.71 | Early life stages: >9.5 mg/L Other life stages >6.5 mg/L |
| Dissolved Chloride at Surface (Outlet) (mg/l) | 220 | 180 | 190 | 97 | Long-Term Exposure: >120 mg/L |
| Dissolved Chloride at Depth (mg/l) | 220 | 180 | 190 | 170 | Long-Term Exposure: >120 mg/L |
| Total Phosphorus at Surface (µg/l) | 4.8 | 5.1 | 3.2 | 6.7 | *See Table 5 |
| Total Phosphorus at Depth (µg/l) | 3.9 | 58.0 | 3.7 | ND | *See Table 5 |
| Chlorophyll - a at Surface (µg/L) | 2.48 | 11.9 | 0.76 | 2.79 | *See Table 5 |
| E. coli at Surface (CFU/100ml) | 10 | 2 | ND | 12 | ≥ 235 CFU/100ml |

*Table 5 of the State of the Lakes report provides estimated Trophic States of lakes based on the CCME P Framework and the NALMS Chlorophyll-a Framework

halifax.ca/lakewatchers



Satellite Imagery of Russell Lake w/ Sampling Locations



Bathymetry Map of Russell Lake



Sandy Lake, Bedford, Nova Scotia

SPRING AND SUMMER 2022 – 2023 WATER QUALITY DATA

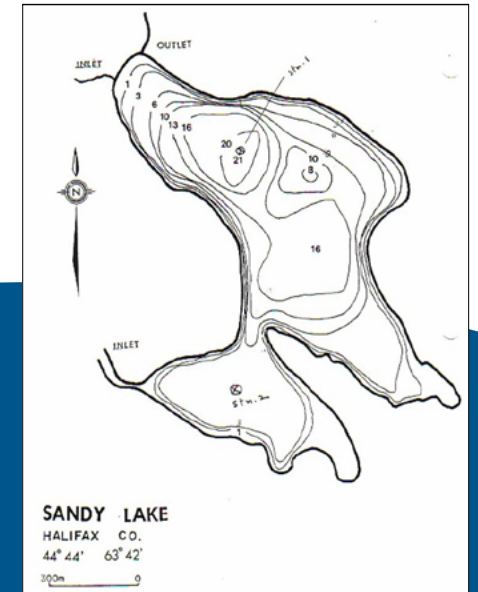
| Parameter | Spring 2022 5/4/2022 | Summer 2022 8/22/2022 | Spring 2023 4/21/2023 | Summer 2023 8/14/2023 | CCME FWAL Guideline |
|---|-------------------------|--------------------------|--------------------------|--------------------------|---|
| Sampling Team | Consultants | Volunteers | Volunteers | Volunteers | n/a |
| pH | 7.75 | NA | 6.82 | 6.58 | 6.5 to 9.0 |
| Dissolved Oxygen at Surface (mg/l) | 11.17 | 8.08 | 11.85 | 8.62 | Early life stages: >9.5 mg/L Other life stages >6.5 mg/L |
| Dissolved Chloride at Surface (Outlet) (mg/l) | 49 | 49 | 46 | 19 | Long-Term Exposure: >120 mg/L |
| Dissolved Chloride at Depth (mg/l) | 57 | 55 | 44 | 42 | Long-Term Exposure: >120 mg/L |
| Total Phosphorus at Surface (µg/l) | 6.0 | ND | 3.5 | 8.8 | *See Table 5 |
| Total Phosphorus at Depth (µg/l) | 7.0 | 4.7 | 7.4 | 8.7 | *See Table 5 |
| Chlorophyll - a at Surface (µg/L) | 3.26 | 5.22 | NA | 3.28 | *See Table 5 |
| E. coli at Surface (CFU/100ml) | ND | 2.0 | ND | 8.0 | ≥ 235 CFU/100ml |

*Table 5 of the State of the Lakes report provides estimated Trophic States of lakes based on the CCME P Framework and the NALMS Chlorophyll-a Framework

halifax.ca/lakewatchers



Satellite Imagery Map of Sandy Lake
w/ Sampling Locations



Bathymetry Map of Sandy Lake

Sandy Lake, Glen Arbour, Nova Scotia

SPRING AND SUMMER 2022 – 2023 WATER QUALITY DATA

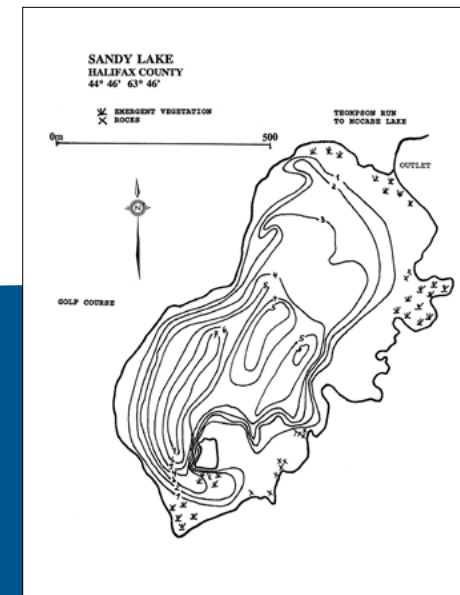
| Parameter | Spring 2022 5/13/2022 | Summer 2022 8/24/2022 | Spring 2023 4/18/2023 | Summer 2023 8/14/2023 | CCME FWAL Guideline |
|---|--------------------------|--------------------------|--------------------------|--------------------------|---|
| Sampling Team | Consultants | Consultants | Consultants | Consultants | n/a |
| pH | 6.67 | 6.64 | 7.00 | 6.52 | 6.5 to 9.0 |
| Dissolved Oxygen at Surface (mg/l) | 10.6 | 8.48 | 10.80 | 8.07 | Early life stages: >9.5 mg/L Other life stages >6.5 mg/L |
| Dissolved Chloride at Surface (Outlet) (mg/l) | 11.0 | 10.0 | 8.8 | 7.0 | Long-Term Exposure: >120 mg/L |
| Dissolved Chloride at Depth (mg/l) | 11.0 | 12.0 | 9.2 | 10.0 | Long-Term Exposure: >120 mg/L |
| Total Phosphorus at Surface (µg/l) | 2.0 | 3.5 | 2.1 | 3.8 | *See Table 5 |
| Total Phosphorus at Depth (µg/l) | 2.2 | ND | 4.0 | 9.1 | *See Table 5 |
| Chlorophyll - a at Surface (µg/L) | 1.97 | 2.08 | 1.24 | 4.81 | *See Table 5 |
| E. coli at Surface (CFU/100ml) | ND | 2.0 | ND | 6.0 | ≥ 235 CFU/100ml |

*Table 5 of the State of the Lakes report provides estimated Trophic States of lakes based on the CCME P Framework and the NALMS Chlorophyll-a Framework

halifax.ca/lakewatchers



Satellite Imagery Map of Sandy Lake (G A) w/ Sampling Locations



Bathymetry Map of Sandy Lake



Scots Lake, Musquodoboit Harbour, Nova Scotia

SPRING AND SUMMER 2022 – 2023 WATER QUALITY DATA

| Parameter | Spring 2022 5/16/2022 | Summer 2022 8/30/2022 | Spring 2023 5/4/2023 | Summer 2023 8/22/2023 | CCME FWAL Guideline |
|---|--------------------------|--------------------------|-------------------------|--------------------------|---|
| Sampling Team | Consultants | Consultants | Consultants | Consultants | n/a |
| pH | 5.68 | 6.14 | 5.51 | 5.68 | 6.5 to 9.0 |
| Dissolved Oxygen at Surface (mg/l) | 10.77 | 8.42 | 11.64 | 8.21 | Early life stages: >9.5 mg/L Other life stages >6.5 mg/L |
| Dissolved Chloride at Surface (Outlet) (mg/l) | 4.7 | 5.1 | 5.2 | 5.1 | Long-Term Exposure: >120 mg/L |
| Dissolved Chloride at Depth (mg/l) | 4.7 | 5.2 | 5.3 | 5.5 | Long-Term Exposure: >120 mg/L |
| Total Phosphorus at Surface (µg/l) | 4.4 | 2.8 | 3.3 | 3.3 | *See Table 5 |
| Total Phosphorus at Depth (µg/l) | 6.8 | 4.6 | 2.0 | 5.8 | *See Table 5 |
| Chlorophyll - a at Surface (µg/L) | 1.72 | 2.73 | 1.47 | 2.56 | *See Table 5 |
| E. coli at Surface (CFU/100ml) | ND | ND | 2.0 | 12.0 | ≥ 235 CFU/100ml |

*Table 5 of the State of the Lakes report provides estimated Trophic States of lakes based on the CCME P Framework and the NALMS Chlorophyll-a Framework

halifax.ca/lakewatchers



Satellite Imagery Map of Scots Lake
w/ Sampling Locations



Bathymetry Map of Scots Lake

Second Lake, Windsor Junction, Nova Scotia

SPRING AND SUMMER 2022 – 2023 WATER QUALITY DATA

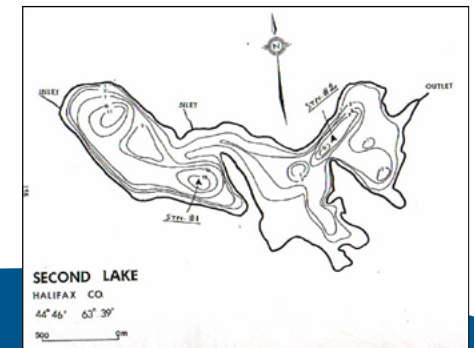
| Parameter | Spring 2022 5/5/2022 | Summer 2022 8/14/2022 | Spring 2023 4/26/2023 | Summer 2023 8/14/2023 | CCME FWAL Guideline |
|---|-------------------------|--------------------------|--------------------------|--------------------------|---|
| Sampling Team | Consultants | Volunteers | Volunteers | Volunteers | n/a |
| pH | 7.51 | 7.56 | 7.51 | 7.32 | 6.5 to 9.0 |
| Dissolved Oxygen at Surface (mg/l) | 11.04 | 7.50 | 11.40 | 9.21 | Early life stages: >9.5 mg/L Other life stages >6.5 mg/L |
| Dissolved Chloride at Surface (Outlet) (mg/l) | 36 | 38 | 32 | 21 | Long-Term Exposure: >120 mg/L |
| Dissolved Chloride at Depth (mg/l) | 38 | 39 | 35 | 34 | Long-Term Exposure: >120 mg/L |
| Total Phosphorus at Surface (µg/l) | 5.5 | ND | 3.1 | 7.0 | *See Table 5 |
| Total Phosphorus at Depth (µg/l) | 4.3 | 3.8 | 3.8 | 6.6 | *See Table 5 |
| Chlorophyll - a at Surface (µg/L) | 3.92 | 1.12 | 1.57 | 9.77 | *See Table 5 |
| E. coli at Surface (CFU/100ml) | ND | ND | ND | 14 | ≥ 235 CFU/100ml |

*Table 5 of the State of the Lakes report provides estimated Trophic States of lakes based on the CCME P Framework and the NALMS Chlorophyll-a Framework

halifax.ca/lakewatchers



Satellite Imagery Map of Second Lake w/ Sampling Locations



Bathymetry Map of Second Lake

Settle Lake, Dartmouth, Nova Scotia

SPRING AND SUMMER 2022 – 2023 WATER QUALITY DATA

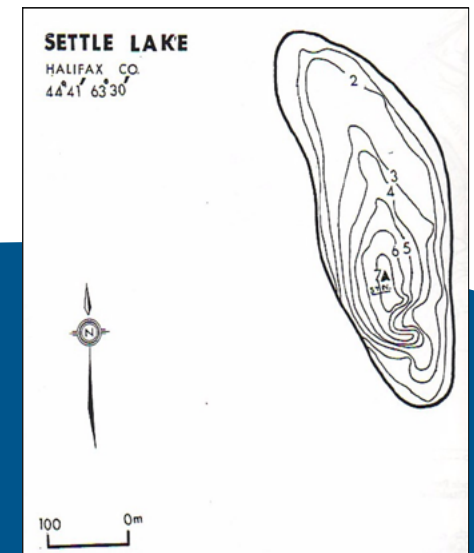
| Parameter | Spring 2022 5/5/2022 | Summer 2022 8/12/2022 | Spring 2023 4/18/2023 | Summer 2023 8/15/2023 | CCME FWAL Guideline |
|---|-------------------------|--------------------------|--------------------------|--------------------------|---|
| Sampling Team | Consultants | Consultants | Consultants | Volunteers | n/a |
| pH | 6.37 | 7.06 | 6.87 | 8.78 | 6.5 to 9.0 |
| Dissolved Oxygen at Surface (mg/l) | 14.58 | 7.12 | 11.17 | 9.44 | Early life stages: >9.5 mg/L Other life stages >6.5 mg/L |
| Dissolved Chloride at Surface (Outlet) (mg/l) | 130 | 110 | 110 | 56 | Long-Term Exposure: >120 mg/L |
| Dissolved Chloride at Depth (mg/l) | 150 | 130 | 110 | 57 | Long-Term Exposure: >120 mg/L |
| Total Phosphorus at Surface (µg/l) | 8.6 | 3.8 | 5.1 | 54.0 | *See Table 5 |
| Total Phosphorus at Depth (µg/l) | 9.9 | 120.0 | 15.0 | 19.0 | *See Table 5 |
| Chlorophyll - a at Surface (µg/L) | 2.96 | 6.73 | 1.48 | 124.0 | *See Table 5 |
| E. coli at Surface (CFU/100ml) | ND | 64 | ND | 28 | ≥ 235 CFU/100ml |

*Table 5 of the State of the Lakes report provides estimated Trophic States of lakes based on the CCME P Framework and the NALMS Chlorophyll-a Framework

halifax.ca/lakewatchers



Satellite Imagery Map of Settle Lake w/ Sampling Locations



Bathymetry Map of Settle Lake

Sheldrake Lake, Hubley, Nova Scotia

SPRING AND SUMMER 2022 – 2023 WATER QUALITY DATA

| Parameter | Spring 2022 5/13/2022 | Summer 2022 8/15/2022 | Spring 2023 4/17/2023 | Summer 2023 8/9/2023 | CCME FWAL Guideline |
|---|--------------------------|--------------------------|--------------------------|-------------------------|---|
| Sampling Team | Consultants | Consultants | Consultants | Collaborative | n/a |
| pH | 5.79 | 6.57 | 5.71 | 5.76 | 6.5 to 9.0 |
| Dissolved Oxygen at Surface (mg/l) | 9.96 | 7.81 | 10.6 | 7.12 | Early life stages: >9.5 mg/L Other life stages >6.5 mg/L |
| Dissolved Chloride at Surface (Outlet) (mg/l) | 32 | 28 | 32 | 16 | Long-Term Exposure: >120 mg/L |
| Dissolved Chloride at Depth (mg/l) | 32 | 34 | 33 | 29 | Long-Term Exposure: >120 mg/L |
| Total Phosphorus at Surface (µg/l) | 13.0 | 11.0 | 7.9 | 29.0 | *See Table 5 |
| Total Phosphorus at Depth (µg/l) | 13. | 71 | 24 | 77 | *See Table 5 |
| Chlorophyll - a at Surface (µg/L) | 3.30 | 8.72 | 4.10 | 18.20 | *See Table 5 |
| E. coli at Surface (CFU/100ml) | ND | 8.0 | ND | 8.0 | ≥ 235 CFU/100ml |

*Table 5 of the State of the Lakes report provides estimated Trophic States of lakes based on the CCME P Framework and the NALMS Chlorophyll-a Framework

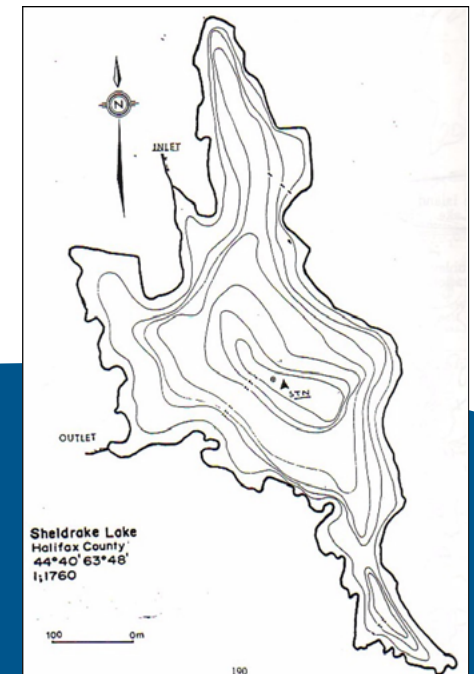
halifax.ca/lakewatchers

HalifACT Acting on
Climate
Together

LakeWatchers



Satellite Imagery Map of Sheldrake Lake w/ Sampling Locations



Bathymetry Map of Sheldrake Lake

Shubenacadie Grand Lake, Wellington, Nova Scotia

SPRING AND SUMMER 2022 – 2023 WATER QUALITY DATA

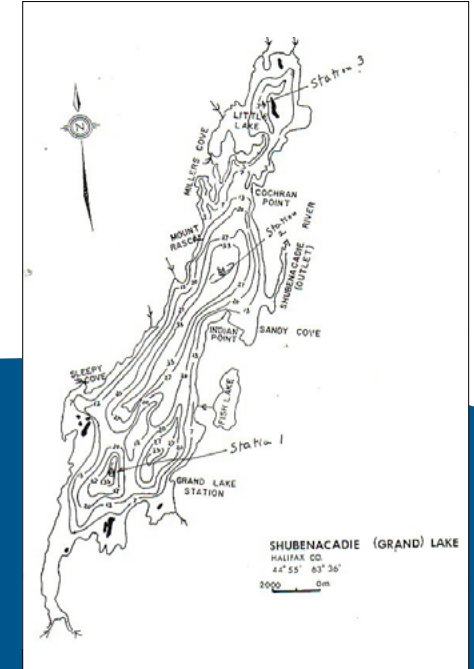
| Parameter | Spring 2022 5/3/2022 | Summer 2022 8/26/2022 | Spring 2023 5/3/2023 | Summer 2023 8/14/2023 | CCME FWAL Guideline |
|---|-------------------------|--------------------------|-------------------------|--------------------------|---|
| Sampling Team | Consultants | Consultants | Consultants | Volunteers | n/a |
| pH | 7.80 | 7.51 | 7.28 | 6.89 | 6.5 to 9.0 |
| Dissolved Oxygen at Surface (mg/l) | 11.59 | 8.41 | 12.23 | 8.03 | Early life stages: >9.5 mg/L Other life stages >6.5 mg/L |
| Dissolved Chloride at Surface (Outlet) (mg/l) | 20 | 20 | 21 | 17 | Long-Term Exposure: >120 mg/L |
| Dissolved Chloride at Depth (mg/l) | 20 | 20 | 20 | 20 | Long-Term Exposure: >120 mg/L |
| Total Phosphorus at Surface (µg/l) | 4.1 | 1.3 | 1.5 | 3.9 | *See Table 5 |
| Total Phosphorus at Depth (µg/l) | 3.7 | ND | 1.4 | 2.3 | *See Table 5 |
| Chlorophyll - a at Surface (µg/L) | 1.10 | 4.33 | 1.06 | 9.06 | *See Table 5 |
| E. coli at Surface (CFU/100ml) | ND | ND | 2.0 | 12.0 | ≥ 235 CFU/100ml |

*Table 5 of the State of the Lakes report provides estimated Trophic States of lakes based on the CCME P Framework and the NALMS Chlorophyll-a Framework

halifax.ca/lakewatchers



Satellite Imagery Map of Shubenacadie w/ Sampling Locations



Bathymetry Map of Shubenacadie

Springfield Lake, Middle Sackville, Nova Scotia

SPRING AND SUMMER 2022 – 2023 WATER QUALITY DATA

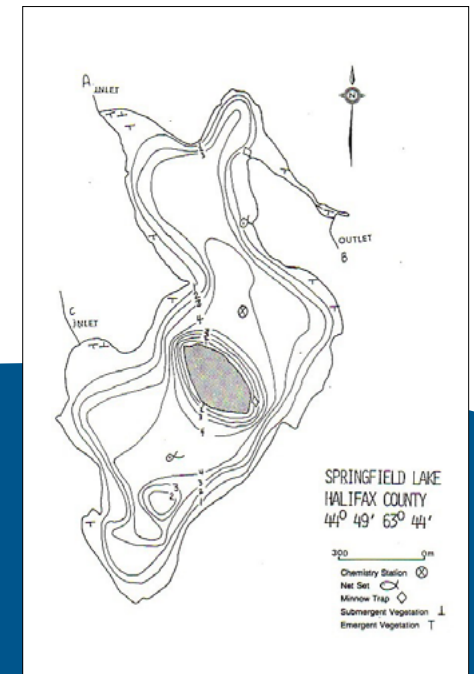
| Parameter | Spring 2022 5/3/2022 | Summer 2022 8/18/2022 | Spring 2023 4/19/2023 | Summer 2023 8/8/2023 | CCME FWAL Guideline |
|---|-------------------------|--------------------------|--------------------------|-------------------------|---|
| Sampling Team | Consultants | Consultants | Consultants | Consultants | n/a |
| pH | 6.04 | 7.12 | 6.83 | 7.15 | 6.5 to 9.0 |
| Dissolved Oxygen at Surface (mg/l) | 13.54 | 8.10 | 11.05 | 7.77 | Early life stages: >9.5 mg/L Other life stages >6.5 mg/L |
| Dissolved Chloride at Surface (Outlet) (mg/l) | 16 | 20 | 18 | 14 | Long-Term Exposure: >120 mg/L |
| Dissolved Chloride at Depth (mg/l) | 21 | 20 | 18 | 14 | Long-Term Exposure: >120 mg/L |
| Total Phosphorus at Surface (µg/l) | 4.4 | ND | 3.4 | 7.4 | *See Table 5 |
| Total Phosphorus at Depth (µg/l) | 5.1 | 4.4 | 4.6 | ND | *See Table 5 |
| Chlorophyll - a at Surface (µg/L) | 0.50 | 1.79 | 0.30 | 3.82 | *See Table 5 |
| E. coli at Surface (CFU/100ml) | ND | 8.0 | ND | 8.0 | ≥ 235 CFU/100ml |

*Table 5 of the State of the Lakes report provides estimated Trophic States of lakes based on the CCME P Framework and the NALMS Chlorophyll-a Framework

halifax.ca/lakewatchers



Satellite Imagery Map of Springfield Lake w/ Sampling Locations



Bathymetry Map of Springfield Lake

Stillwater Lake, Upper Tantallon, Nova Scotia

SPRING AND SUMMER 2022 – 2023 WATER QUALITY DATA

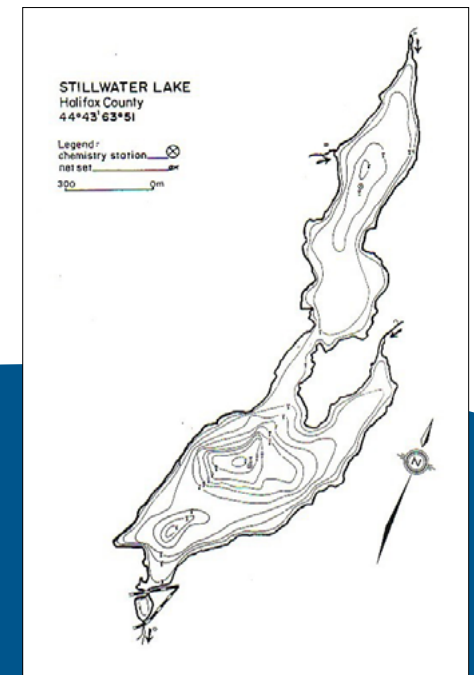
| Parameter | Spring 2022 5/12/2022 | Summer 2022 8/24/2022 | Spring 2023 4/26/2023 | Summer 2023 8/25/2023 | CCME FWAL Guideline |
|---|--------------------------|--------------------------|--------------------------|--------------------------|---|
| Sampling Team | Consultants | Consultants | Consultants | Volunteers | n/a |
| pH | 6.25 | 6.89 | 6.28 | 5.85 | 6.5 to 9.0 |
| Dissolved Oxygen at Surface (mg/l) | 10.07 | 8.44 | 11.34 | 7.75 | Early life stages: >9.5 mg/L Other life stages >6.5 mg/L |
| Dissolved Chloride at Surface (Outlet) (mg/l) | 13.0 | 11.0 | 11.0 | 6.5 | Long-Term Exposure: >120 mg/L |
| Dissolved Chloride at Depth (mg/l) | 13.0 | 12.0 | 11.0 | 6.5 | Long-Term Exposure: >120 mg/L |
| Total Phosphorus at Surface (µg/l) | 6.6 | 4.4 | 2.6 | 13.0 | *See Table 5 |
| Total Phosphorus at Depth (µg/l) | 5.8 | 7.7 | 4.0 | 13.0 | *See Table 5 |
| Chlorophyll - a at Surface (µg/L) | 2.49 | 4.64 | 3.78 | 5.36 | *See Table 5 |
| E. coli at Surface (CFU/100ml) | ND | 4.0 | ND | ND | ≥ 235 CFU/100ml |

*Table 5 of the State of the Lakes report provides estimated Trophic States of lakes based on the CCME P Framework and the NALMS Chlorophyll-a Framework

halifax.ca/lakewatchers



Satellite Imagery Map of Stillwater Lake w/ Sampling Locations



Bathymetry Map of Stillwater Lake

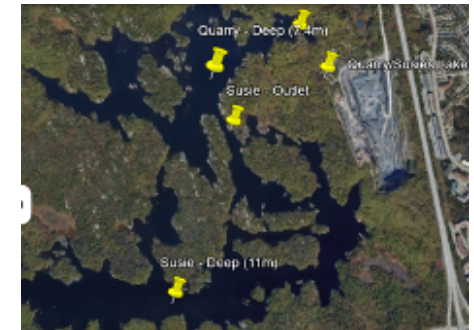
Susies Lake, Halifax, Nova Scotia

SPRING AND SUMMER 2022 – 2023 WATER QUALITY DATA

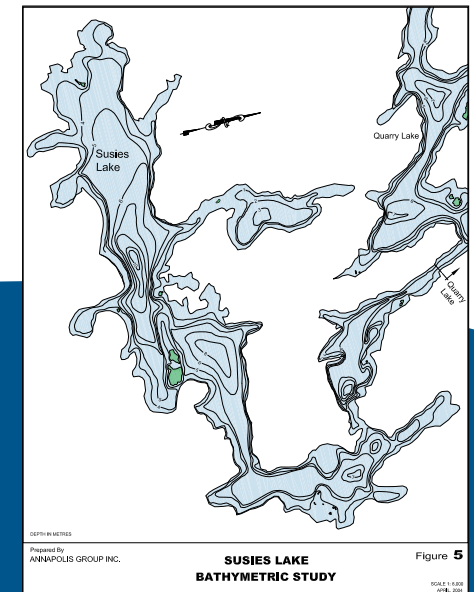
| Parameter | Spring 2022 5/16/2022 | Summer 2022 8/25/2022 | Spring 2023 5/4/2023 | Summer 2023 8/16/2023 | CCME FWAL Guideline |
|---|--------------------------|--------------------------|-------------------------|--------------------------|---|
| Sampling Team | Consultants | Consultants | Consultants | Consultants | n/a |
| pH | 5.31 | 5.74 | 4.88 | 5.26 | 6.5 to 9.0 |
| Dissolved Oxygen at Surface (mg/l) | 10.14 | 8.39 | 11.00 | 7.50 | Early life stages: >9.5 mg/L Other life stages >6.5 mg/L |
| Dissolved Chloride at Surface (Outlet) (mg/l) | 79 | 69 | 69 | 27 | Long-Term Exposure: >120 mg/L |
| Dissolved Chloride at Depth (mg/l) | 67 | 74 | 58 | 51 | Long-Term Exposure: >120 mg/L |
| Total Phosphorus at Surface (µg/l) | 2.2 | 2.4 | 2.5 | 4.2 | *See Table 5 |
| Total Phosphorus at Depth (µg/l) | 2.8 | 18.0 | 2.7 | 15.0 | *See Table 5 |
| Chlorophyll - a at Surface (µg/L) | 0.91 | 1.86 | 0.33 | 1.65 | *See Table 5 |
| E. coli at Surface (CFU/100ml) | ND | ND | 2.0 | 6.0 | ≥ 235 CFU/100ml |

*Table 5 of the State of the Lakes report provides estimated Trophic States of lakes based on the CCME P Framework and the NALMS Chlorophyll-a Framework

halifax.ca/lakewatchers



Satellite Imagery Map of Susies Lake w/ Sampling Locations



Bathymetry Map of Susies Lake



Third Lake, Windsor Junction, Nova Scotia

SPRING AND SUMMER 2022 – 2023 WATER QUALITY DATA

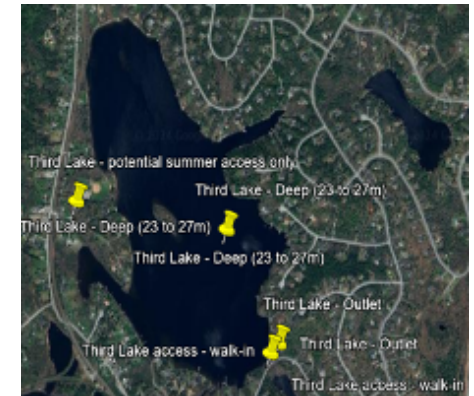
| Parameter | Spring 2022 5/9/2022 | Summer 2022 8/30/2022 | Spring 2023 4/28/2023 | Summer 2023 8/17/2023 | CCME FWAL Guideline |
|---|-------------------------|--------------------------|--------------------------|--------------------------|---|
| Sampling Team | Consultants | Collaborative | Consultants | Volunteers | n/a |
| pH | 8.1 | 7.1 | 6.6 | 7.3 | 6.5 to 9.0 |
| Dissolved Oxygen at Surface (mg/l) | 10.96 | 8.33 | 11.72 | 8.44 | Early life stages: >9.5 mg/L Other life stages >6.5 mg/L |
| Dissolved Chloride at Surface (Outlet) (mg/l) | 26 | 29 | 28 | 22 | Long-Term Exposure: >120 mg/L |
| Dissolved Chloride at Depth (mg/l) | 25 | 27 | 27 | 29 | Long-Term Exposure: >120 mg/L |
| Total Phosphorus at Surface (µg/l) | 3.4 | 3.6 | 2.3 | 5.6 | *See Table 5 |
| Total Phosphorus at Depth (µg/l) | 3.8 | 3.5 | 3.7 | 59.0 | *See Table 5 |
| Chlorophyll - a at Surface (µg/L) | 5.30 | 2.18 | 2.49 | 5.07 | *See Table 5 |
| E. coli at Surface (CFU/100ml) | ND | 6.0 | ND | 4.0 | ≥ 235 CFU/100ml |

*Table 5 of the State of the Lakes report provides estimated Trophic States of lakes based on the CCME P Framework and the NALMS Chlorophyll-a Framework

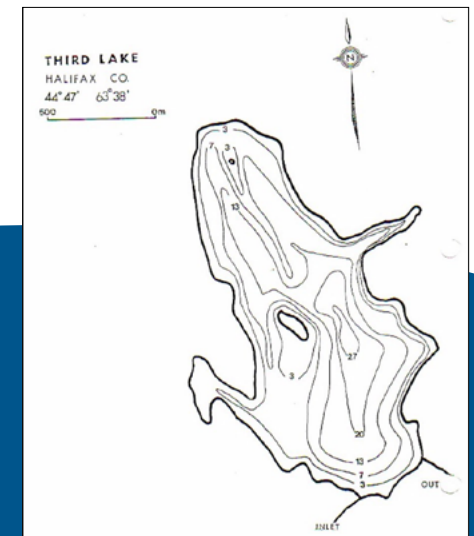
halifax.ca/lakewatchers

HalifACT Acting on
Climate
Together

LakeWatchers



Satellite Imagery Map of Third Lake w/ Sampling Locations



Bathymetry Map of Third Lake



Thomas Lake (North and South), Fall River, Nova Scotia

SPRING AND SUMMER 2022 – 2023 WATER QUALITY DATA

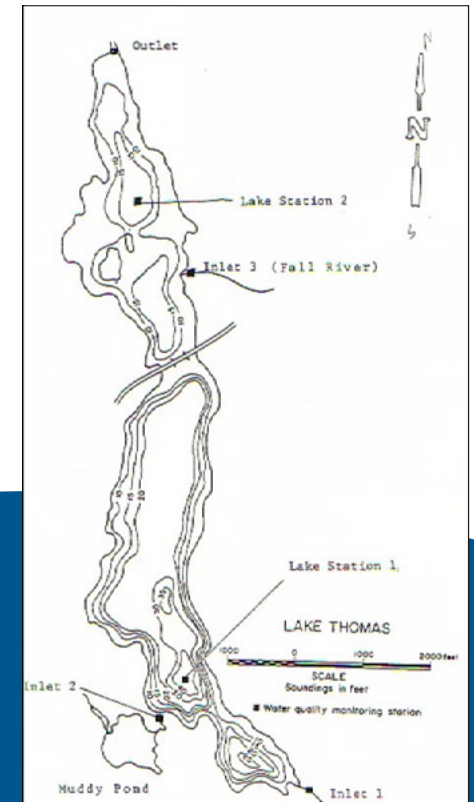
| Parameter | Station | Spring 2022 5/2/2022 | Summer 2022 8/17/2022 | Spring 2023 4/20/2023 | Summer 2023 8/14/2023 | CCME FWAL Guideline |
|--|---------|-------------------------|--------------------------|--------------------------|--------------------------|---|
| Sampling Team | | Consultants | Consultants | Consultants | Consultants | n/a |
| pH | North | 7.13 | 7.38 | 7.22 | 7.18 | 6.5 to 9.0 |
| | South | 6.77 | 7.59 | 6.84 | 6.88 | |
| Dissolved Oxygen at Surface (mg/l) | North | 11.96 | 8.06 | 11.47 | 7.68 | Early life stages: >9.5 mg/L Other life stages >6.5 mg/L |
| | South | 12.96 | 8.44 | 11.92 | 7.18 | |
| Dissolved Chloride at Surface (Outlet) (mg/l) | North | 40 | 41 | 37 | 29 | Long-Term Exposure: >120 mg/L |
| | South | 40 | 43 | 41 | 34 | |
| Dissolved Chloride at Depth (mg/l) | North | 38 | 40 | 37 | 23 | *See Table 5 |
| | South | 46 | 42 | 41 | 40 | |
| Total Phosphorus at Surface (µg/l) | North | 2.3 | ND | 4.1 | 2.8 | *See Table 5 |
| | South | 3.1 | ND | 2.7 | 15.0 | |
| Total Phosphorus at Depth (µg/l) | North | 2.9 | ND | 4.5 | 4.0 | *See Table 5 |
| | South | 1.9 | 2.0 | 3.0 | 4.2 | |
| Chlorophyll - a at Surface (µg/L) | North | 2.49 | 4.15 | 1.24 | 3.40 | *See Table 5 |
| | South | 2.72 | 3.37 | 1.21 | 3.20 | |
| E. coli at Surface (CFU/100ml) | North | ND | 6.0 | ND | 8.0 | ≥ 235 CFU/100ml |
| | South | ND | 10 | ND | 10 | |

*Table 5 of the State of the Lakes report provides estimated Trophic States of lakes based on the CCME P Framework and the NALMS Chlorophyll-a Framework

halifax.ca/lakewatchers



Satellite Imagery Map of Thomas Lake w/ Sampling Locations



Bathymetry Map of Thomas Lake

Topsail Lake, Dartmouth, Nova Scotia

SPRING AND SUMMER 2022 – 2023 WATER QUALITY DATA

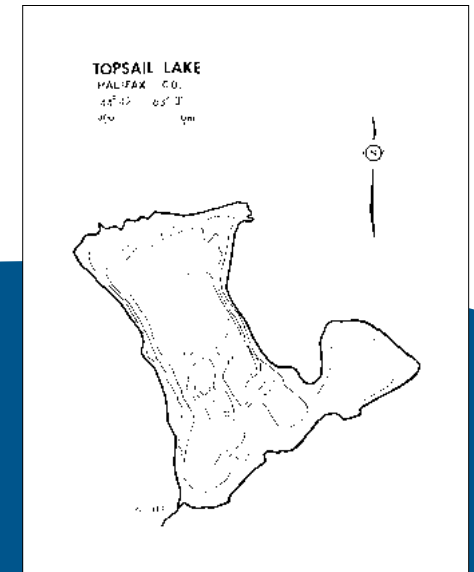
| Parameter | Spring 2022 4/26/2022 | Summer 2022 8/12/2022 | Spring 2023 4/18/2023 | Summer 2023 8/8/2023 | CCME FWAL Guideline |
|---|--------------------------|--------------------------|--------------------------|-------------------------|---|
| Sampling Team | Consultants | Consultants | Consultants | Consultants | n/a |
| pH | 7.57 | 6.28 | 6.49 | 6.29 | 6.5 to 9.0 |
| Dissolved Oxygen at Surface (mg/l) | 13.83 | 8.10 | 11.43 | 7.70 | Early life stages: >9.5 mg/L Other life stages >6.5 mg/L |
| Dissolved Chloride at Surface (Outlet) (mg/l) | 13.0 | 14.0 | 12.0 | 12.0 | Long-Term Exposure: >120 mg/L |
| Dissolved Chloride at Depth (mg/l) | 14 | 14 | 13 | 11 | Long-Term Exposure: >120 mg/L |
| Total Phosphorus at Surface (µg/l) | 2.4 | ND | ND | 2.1 | *See Table 5 |
| Total Phosphorus at Depth (µg/l) | 12.0 | ND | ND | 2.3 | *See Table 5 |
| Chlorophyll - a at Surface (µg/L) | 0.82 | 0.96 | 0.64 | 0.77 | *See Table 5 |
| E. coli at Surface (CFU/100ml) | ND | 20 | ND | NA | ≥ 235 CFU/100ml |

*Table 5 of the State of the Lakes report provides estimated Trophic States of lakes based on the CCME P Framework and the NALMS Chlorophyll-a Framework

halifax.ca/lakewatchers



Satellite Imagery Map of Topsail Lake w/ Sampling Locations



Bathymetry Map of Topsail Lake

Tucker Lake, Beaver Bank, Nova Scotia

SPRING AND SUMMER 2022 – 2023 WATER QUALITY DATA

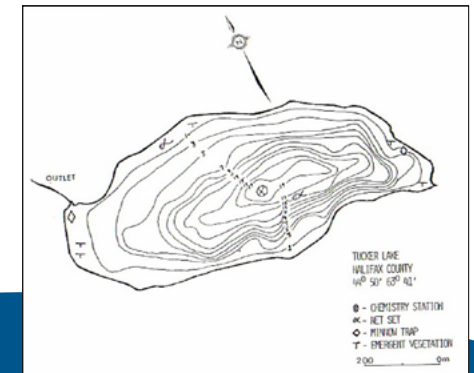
| Parameter | Spring 2022 5/10/2022 | Summer 2022 8/19/2022 | Spring 2023 4/25/2023 | Summer 2023 8/16/2023 | CCME FWAL Guideline |
|---|--------------------------|--------------------------|--------------------------|--------------------------|---|
| Sampling Team | Consultants | Consultants | Consultants | Volunteers | n/a |
| pH | 8.08 | 7.38 | 7.28 | 7.38 | 6.5 to 9.0 |
| Dissolved Oxygen at Surface (mg/l) | 10.84 | 8.33 | 11.26 | 7.66 | Early life stages: >9.5 mg/L Other life stages >6.5 mg/L |
| Dissolved Chloride at Surface (Outlet) (mg/l) | 51 | 51 | 48 | 34 | Long-Term Exposure: >120 mg/L |
| Dissolved Chloride at Depth (mg/l) | 50 | 52 | 47 | 49 | Long-Term Exposure: >120 mg/L |
| Total Phosphorus at Surface (µg/l) | 11.0 | ND | 2.8 | 4.6 | *See Table 5 |
| Total Phosphorus at Depth (µg/l) | 4.8 | ND | 3.6 | 7.5 | *See Table 5 |
| Chlorophyll - a at Surface (µg/L) | 1.63 | 0.829 | 0.734 | 3.26 | *See Table 5 |
| E. coli at Surface (CFU/100ml) | 2.0 | 10.0 | ND | 8.0 | ≥ 235 CFU/100ml |

*Table 5 of the State of the Lakes report provides estimated Trophic States of lakes based on the CCME P Framework and the NALMS Chlorophyll-a Framework

halifax.ca/lakewatchers



Satellite Imagery Map of Tucker Lake w/ Sampling Locations



Bathymetry Map of Tucker Lake

Whites Lake, Whites Lake, Nova Scotia

SPRING AND SUMMER 2022 – 2023 WATER QUALITY DATA

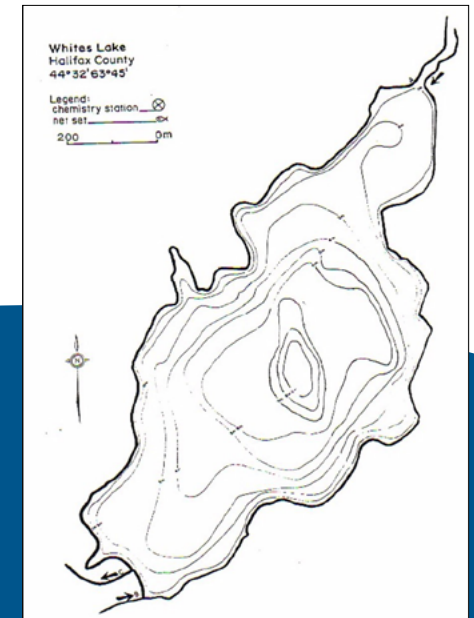
| Parameter | Spring 2022 5/11/2022 | Summer 2022 9/1/2022 | Spring 2023 5/2/2023 | Summer 2023 8/16/2023 | CCME FWAL Guideline |
|---|--------------------------|-------------------------|-------------------------|--------------------------|---|
| Sampling Team | Consultants | Consultants | Consultants | Consultants | n/a |
| pH | 6.39 | 5.91 | 5.37 | 5.70 | 6.5 to 9.0 |
| Dissolved Oxygen at Surface (mg/l) | 9.92 | 7.94 | 10.62 | 7.35 | Early life stages: >9.5 mg/L Other life stages >6.5 mg/L |
| Dissolved Chloride at Surface (Outlet) (mg/l) | 14.0 | 14.0 | 14.0 | 9.2 | Long-Term Exposure: >120 mg/L |
| Dissolved Chloride at Depth (mg/l) | 13 | 13 | 14 | 12 | Long-Term Exposure: >120 mg/L |
| Total Phosphorus at Surface (µg/l) | 5.8 | 12.0 | 13.0 | 12.0 | *See Table 5 |
| Total Phosphorus at Depth (µg/l) | 5.9 | 26.0 | 7.6 | 26.0 | *See Table 5 |
| Chlorophyll - a at Surface (µg/L) | 3.07 | 7.03 | 2.09 | 6.59 | *See Table 5 |
| E. coli at Surface (CFU/100ml) | ND | 4.0 | 2.0 | 4.0 | ≥ 235 CFU/100ml |

*Table 5 of the State of the Lakes report provides estimated Trophic States of lakes based on the CCME P Framework and the NALMS Chlorophyll-a Framework

halifax.ca/lakewatchers



Satellite Imagery Map of Whites Lake w/ Sampling Locations



Bathymetry Map of Whites Lake

Lake William, Waverley, Nova Scotia

SPRING AND SUMMER 2022 – 2023 WATER QUALITY DATA

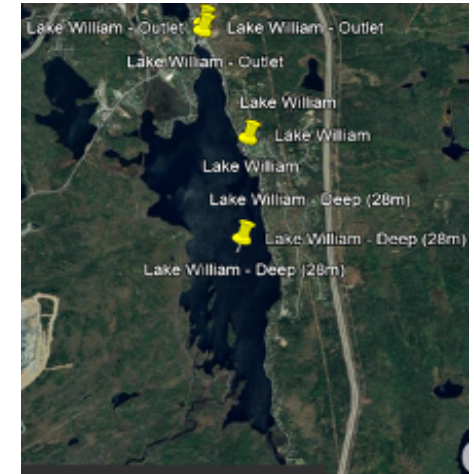
| Parameter | Spring 2022 5/3/2022 | Summer 2022 8/22/2022 | Spring 2023 4/20/2023 | Summer 2023 8/1/2023 | CCME FWAL Guideline |
|---|-------------------------|--------------------------|--------------------------|-------------------------|---|
| Sampling Team | Consultants | Consultants | Consultants | Volunteers | n/a |
| pH | 7.28 | 7.60 | 7.31 | 7.14 | 6.5 to 9.0 |
| Dissolved Oxygen at Surface (mg/l) | 11.88 | 8.85 | 12.52 | 6.62 | Early life stages: >9.5 mg/L Other life stages >6.5 mg/L |
| Dissolved Chloride at Surface (Outlet) (mg/l) | 68 | 45 | 41 | 38 | Long-Term Exposure: >120 mg/L |
| Dissolved Chloride at Depth (mg/l) | 44 | 42 | 41 | 43 | Long-Term Exposure: >120 mg/L |
| Total Phosphorus at Surface (µg/l) | 4.2 | ND | 2.5 | 4.1 | *See Table 5 |
| Total Phosphorus at Depth (µg/l) | 4.5 | ND | 3.0 | 5.5 | *See Table 5 |
| Chlorophyll - a at Surface (µg/L) | 2.45 | 4.15 | 1.49 | 7.53 | *See Table 5 |
| E. coli at Surface (CFU/100ml) | ND | ND | ND | ND | ≥ 235 CFU/100ml |

*Table 5 of the State of the Lakes report provides estimated Trophic States of lakes based on the CCME P Framework and the NALMS Chlorophyll-a Framework

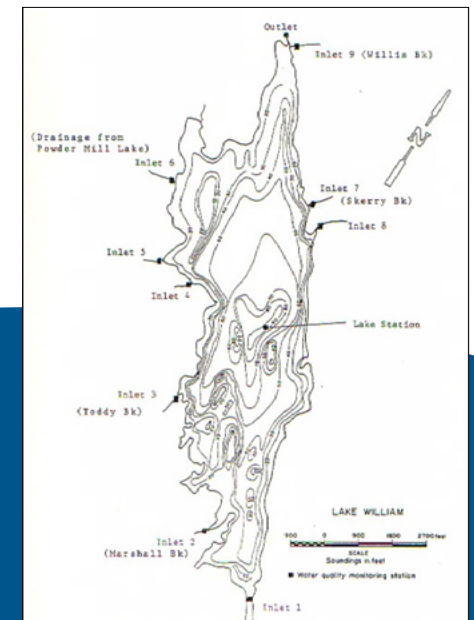
halifax.ca/lakewatchers

HalifACT Acting on
Climate
Together

LakeWatchers



Satellite Imagery Map of Lake William w/ Sampling Locations



Bathymetry Map of Lake William, Waverley

Williams Lake, Spryfield, Nova Scotia

SPRING AND SUMMER 2022 – 2023 WATER QUALITY DATA

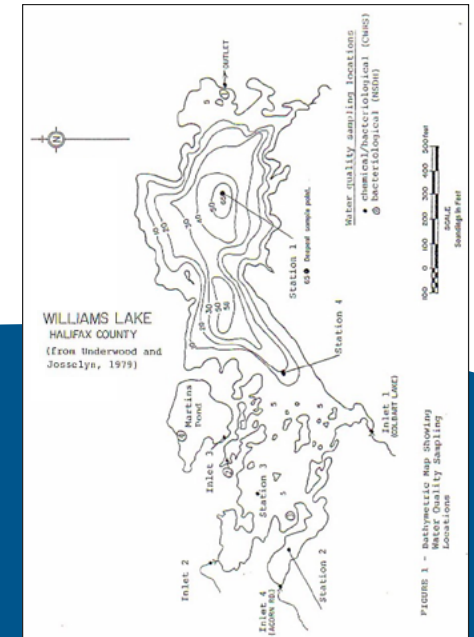
| Parameter | Spring 2022 5/2/2022 | Summer 2022 8/19/2022 | Spring 2023 4/19/2023 | Summer 2023 8/9/2023 | CCME FWAL Guideline |
|---|-------------------------|--------------------------|--------------------------|-------------------------|---|
| Sampling Team | Consultants | Consultants | Consultants | Consultants | n/a |
| pH | 7.87 | 6.85 | 6.59 | 6.51 | 6.5 to 9.0 |
| Dissolved Oxygen at Surface (mg/l) | 11.19 | 8.27 | 11.37 | 7.93 | Early life stages: >9.5 mg/L Other life stages >6.5 mg/L |
| Dissolved Chloride at Surface (Outlet) (mg/l) | 59 | 66 | 50 | 46 | Long-Term Exposure: >120 mg/L |
| Dissolved Chloride at Depth (mg/l) | 57 | 63 | 49 | 51 | Long-Term Exposure: >120 mg/L |
| Total Phosphorus at Surface (µg/l) | 7.6 | ND | 13.0 | 3.4 | *See Table 5 |
| Total Phosphorus at Depth (µg/l) | 4.6 | ND | 3.2 | 17.0 | *See Table 5 |
| Chlorophyll - a at Surface (µg/L) | 3.92 | 1.91 | 1.23 | 2.64 | *See Table 5 |
| E. coli at Surface (CFU/100ml) | ND | 4.0 | ND | 8.0 | ≥ 235 CFU/100ml |

*Table 5 of the State of the Lakes report provides estimated Trophic States of lakes based on the CCME P Framework and the NALMS Chlorophyll-a Framework

halifax.ca/lakewatchers



Satellite Imagery Map of Williams Lake w/ Sampling Locations



Bathymetry Map of Williams Lake



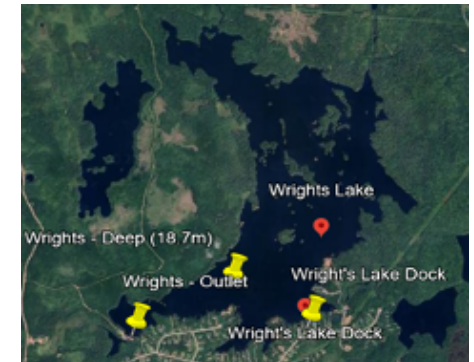
Wrights Lake, Upper Hammonds Plains, Nova Scotia

SPRING AND SUMMER 2022 – 2023 WATER QUALITY DATA

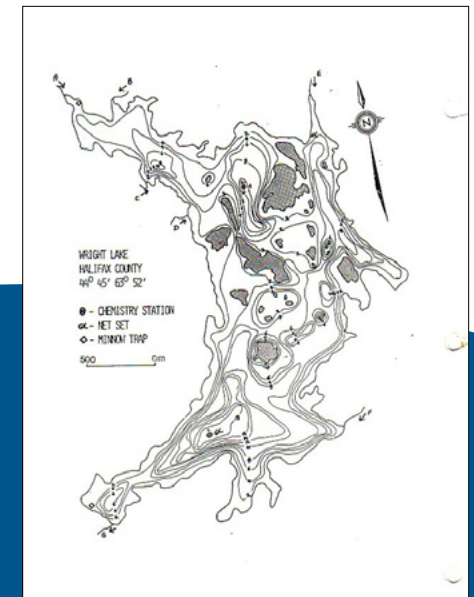
| Parameter | Spring 2022 12/5/2022 | Summer 2022 29/8/2022 | Spring 2023 20/4/2023 | Summer 2023 10/8/2023 | CCME FWAL Guideline |
|---|--------------------------|--------------------------|--------------------------|--------------------------|---|
| Sampling Team | Consultants | Consultants | Consultants | Consultants | n/a |
| pH | 5.83 | 7.02 | 5.93 | 5.97 | 6.5 to 9.0 |
| Dissolved Oxygen at Surface (mg/l) | 10.91 | 8.66 | 11.70 | 7.75 | Early life stages: >9.5 mg/L Other life stages >6.5 mg/L |
| Dissolved Chloride at Surface (Outlet) (mg/l) | 6.1 | 6.2 | 6.4 | 4.9 | Long-Term Exposure: >120 mg/L |
| Dissolved Chloride at Depth (mg/l) | 6.4 | 6.5 | 6.8 | 6.8 | Long-Term Exposure: >120 mg/L |
| Total Phosphorus at Surface (µg/l) | 4.6 | ND | 3.2 | 2.3 | *See Table 5 |
| Total Phosphorus at Depth (µg/l) | 3.4 | ND | 3.4 | 2.1 | *See Table 5 |
| Chlorophyll - a at Surface (µg/L) | 1.7 | 2.2 | 0.9 | 3.0 | *See Table 5 |
| E. coli at Surface (CFU/100ml) | ND | 2.0 | ND | 4.0 | ≥ 235 CFU/100ml |

*Table 5 of the State of the Lakes report provides estimated Trophic States of lakes based on the CCME P Framework and the NALMS Chlorophyll-a Framework

halifax.ca/lakewatchers



Satellite Imagery Map of Wrights Lake w/ Sampling Locations



Bathymetry Map of Wrights Lake