

Lake Echo

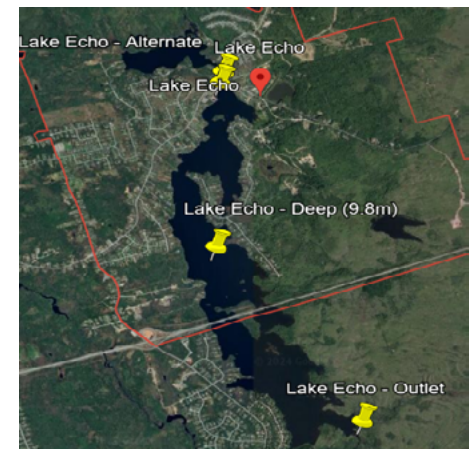
(Approximate maximum depth: 11.3 m)

LAKE ECHO, HALIFAX REGIONAL MUNICIPALITY, NOVA SCOTIA

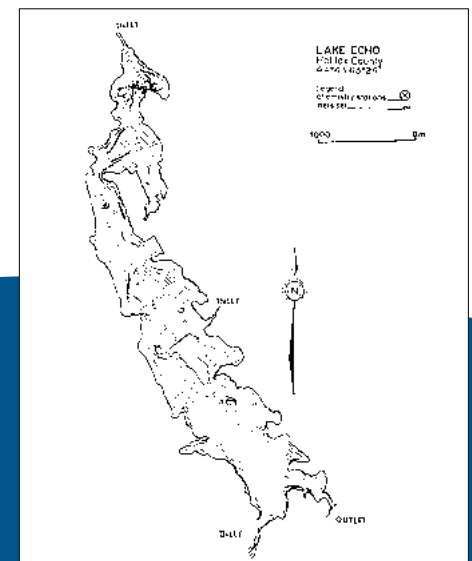
Parameter	Spring 22	Summer 22	Spring 23	Summer 23	Spring 24	Summer 24
Team	Consultant	Consultant	Consultant	Consultant	Consultant	Volunteer
Date	May 16	August 30	May 3	August 22	May 2	August 13
Secchi Depth	1.8 m	2.0 m	1.4 m	0.9 m	1.3 m	1.7 m
Surface pH	6.79	7.06	5.69	5.36	5.51	5.86
Surface SpC	0.0349 ms/cm	0.0378 ms/cm	0.0378 ms/cm	0.0278 ms/cm	0.0306 ms/cm	0.0368 ms/cm
Surface Temp	15.1 °C	24.2 °C	10.7 °C	21.8 °C	10.5 °C	23.8 °C
Surface DO	9.43 mg/L	8.16 mg/L	10.62 mg/L	7.05 mg/L	10.56 mg/L	6.37 mg/L
Summer Stratified?		Yes		Yes		Yes
Thermocline Depth (from lake surface)		6.5 m		7 m		6 m
Anoxic Layer Thickness (from lakebed at deepest location)		4.8 m (42%)		4.3 m (38%)		5.3 m (47%)
Strength of evidence for Internal Loading		Weak		Weak		Strong
Estimated Trophic Status (based on summer Chl- α)		Mesotrophic		Mesotrophic		Mesoeutrophic
Deepwater Chloride	6.1 mg/L	7.2 mg/L	6.6 mg/L	7.0 mg/L	5.2 mg/L	14 mg/L
E. coli Outlet/Surface (CFU/100ml)	ND / ND	2 / 2	8 / 2	2 / 2	Not Collected	2 / 8

*ND = 'non-detect' for E.coli, indicating less than 2 CFU / 100 ml

halifax.ca/lakewatchers



Satellite Imagery Map of Lake Echo w/ Sampling Locations



Bathymetry Map of Lake Echo