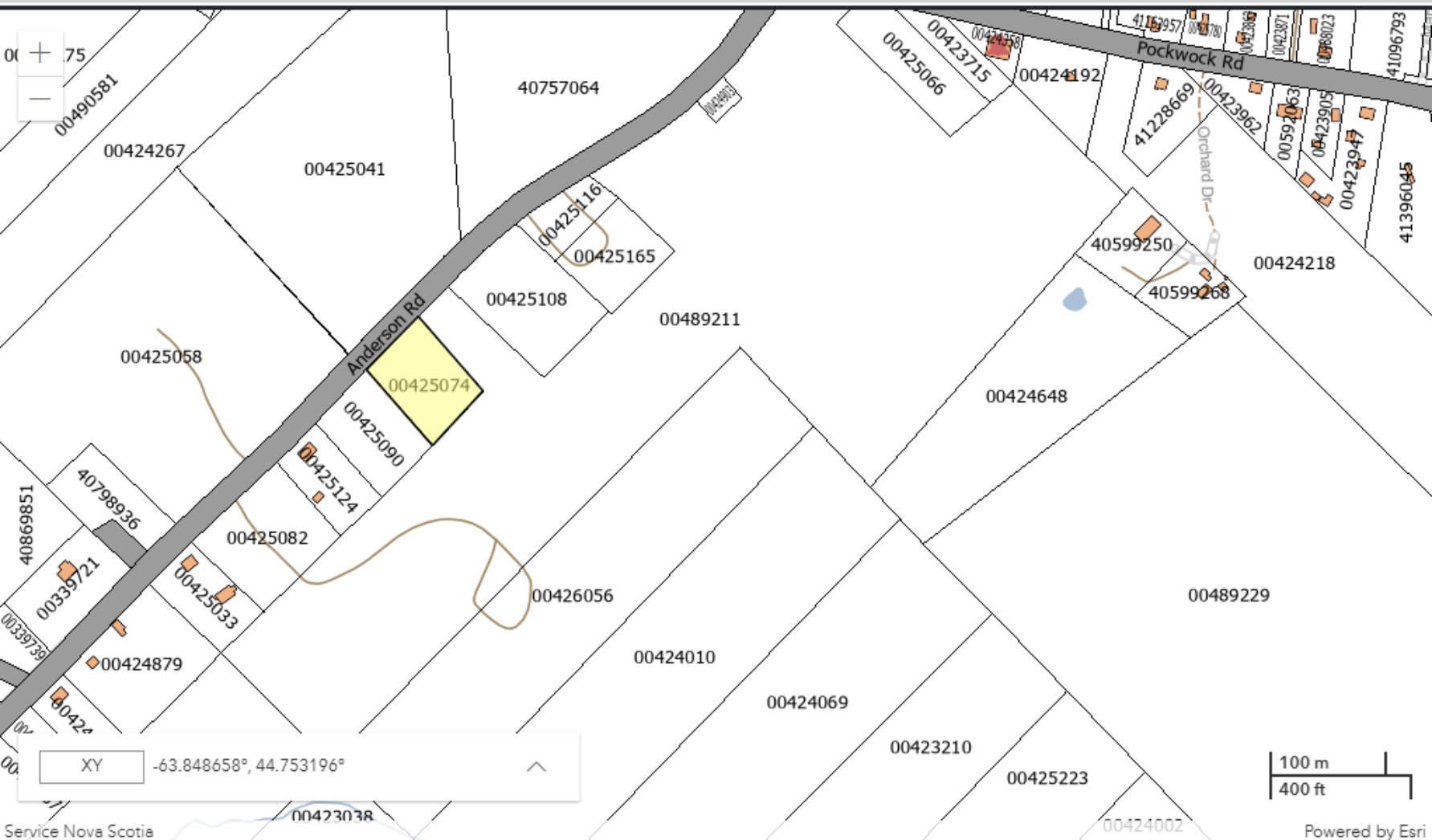


SCHEDULE "A"

PID 425074

Lot D as shown on "Plan Showing Lands Claimed by Whitney & Thomas Marsman, Anderson's Road, Upper Hammonds Plains" signed by Donald V. Purcell, Nova Scotia Land Surveyor on May 14, 1971 and recorded at the Halifax County Land Registration Office on April 12, 1972 as Plan 11031 in Drawer 151.



Lat: 44-45-011N

Long: 063-50-055W

Scale:	4505
--------	------

Go

Zoom: 15 v

The Provincial mapping is a graphical representation of property boundaries which approximate the size, configuration and location of parcels. Care has been taken to ensure the best possible quality, however, this map is not a land survey and is not intended to be used for legal descriptions or to calculate exact dimensions or area. The Provincial mapping is not conclusive as to the location, boundaries or extent of a parcel [Land Registration Act subsection 21(2)]. THIS IS NOT AN OFFICIAL RECORD.