



June 19, 2025

# Parkland Dr AT Improvements 30% Design

ATAC Meeting





## Meeting Goals

1

Present the refined concept design options

2

Acquire feedback





# PROJECT INTRODUCTION

# Project Objective

The objective of the project is to prepare an active transportation improvement functional design along Parkland Drive and Regency Park Drive between Kearney Lake Road and Thomas Raddall Drive.





**Existing Transit Routes**

30A, 30B, 39, 136, 137, 138



**Truck Route**

No



**Speed Limit**

50 km/hr



**Transit Priority Corridor**

No

In the range of 10,000 daily vehicles (24hr TMC at the Lacewood Drive intersection)

**LEGEND**

- Concrete Sidewalk
- Multi-Use Pathway
- Trail
- Existing Bus Stop

# Project Scope

**A**

## Initiate project

- Host Kick-Off Meeting
- Conduct Site Visit

**B**

## Establish existing conditions of the project study corridors

- Topographical survey
- Develop a base map

**C**

## Refine Concept Design

- Prepare concept drawing
- HRM Technical Committee #1

**D**

## Public Engagement

- Prepare public engagement materials  
(**deliverable**)

**E**

## Prepare Functional Design

- Complete functional design draft (**deliverable**)
- HRM Technical Committee #2
- Present at ATAC and AAC
- Finalize Functional Design
- Prepare Final Functional Design Submission  
(**deliverable**)



Project  
Introduction

Concept  
Discussion

Next Steps

# PREVIOUS CONCEPT OPTIONS



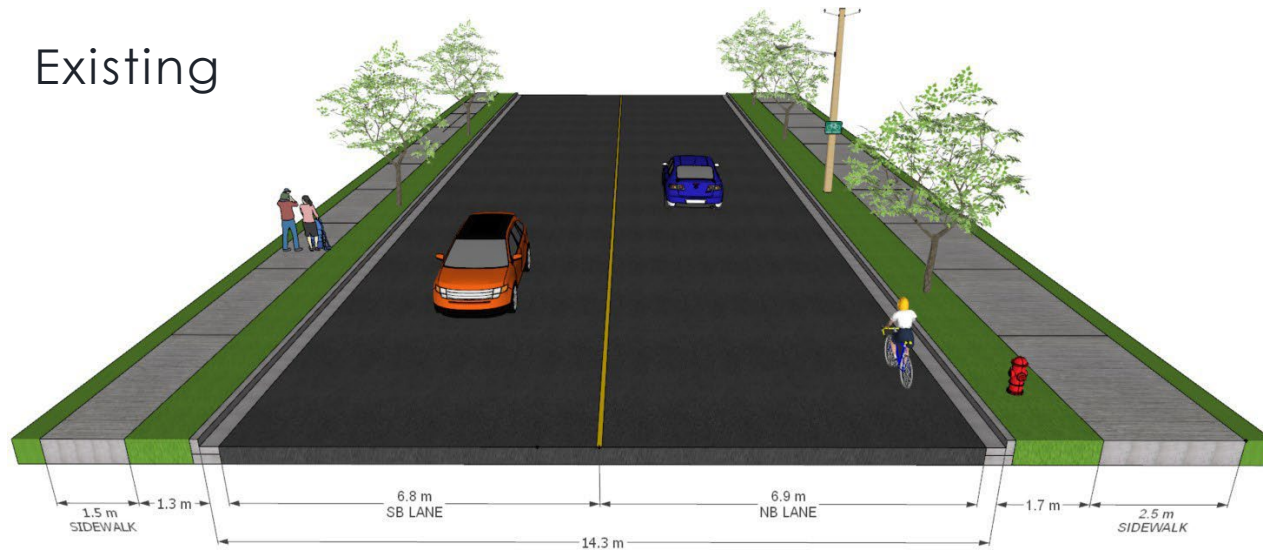
# Parkland Drive Concept 1

Project Introduction

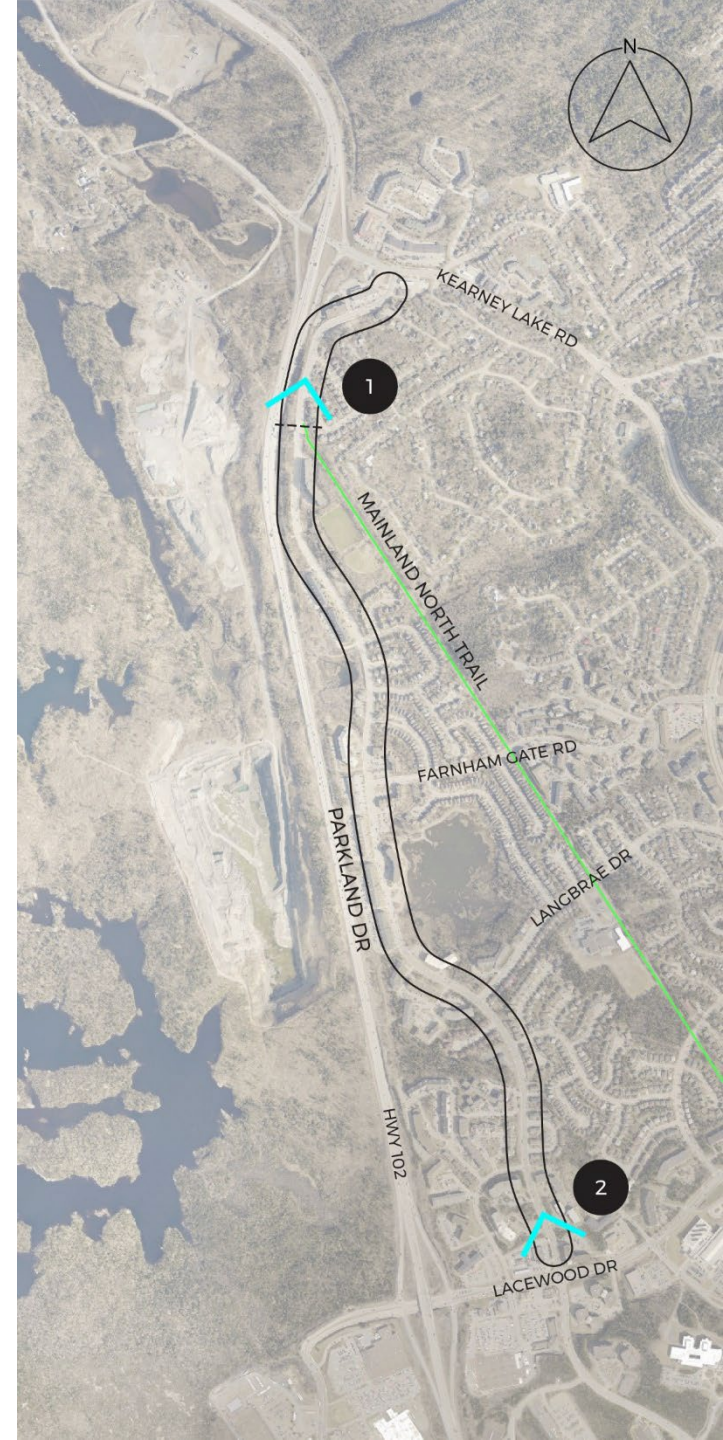
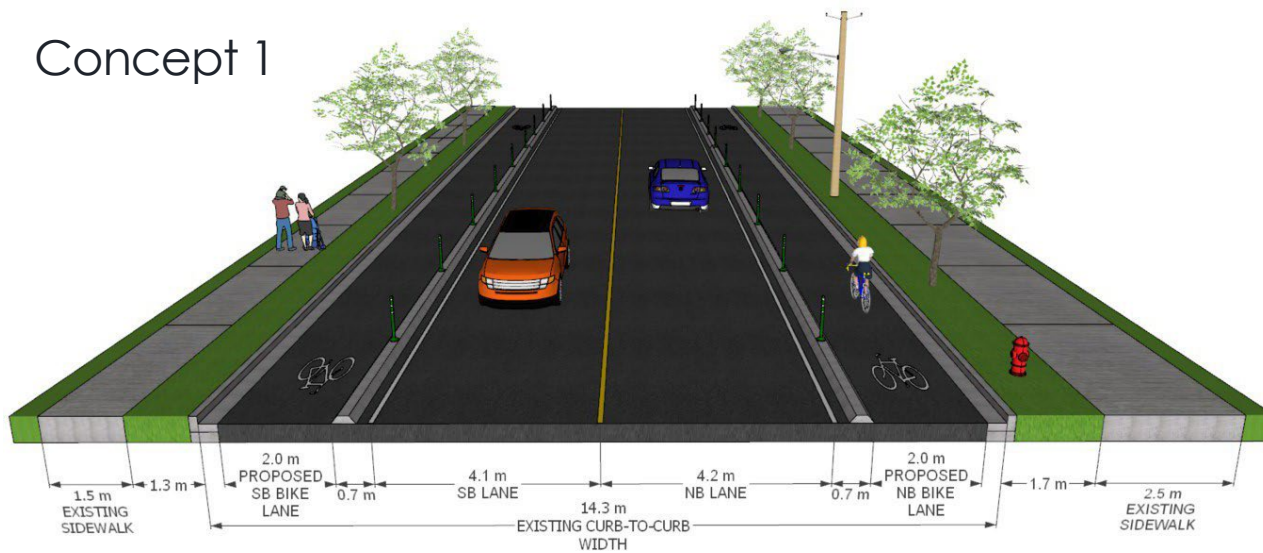
Concept Discussion

Next Steps

## 1 Existing



## 1 Concept 1





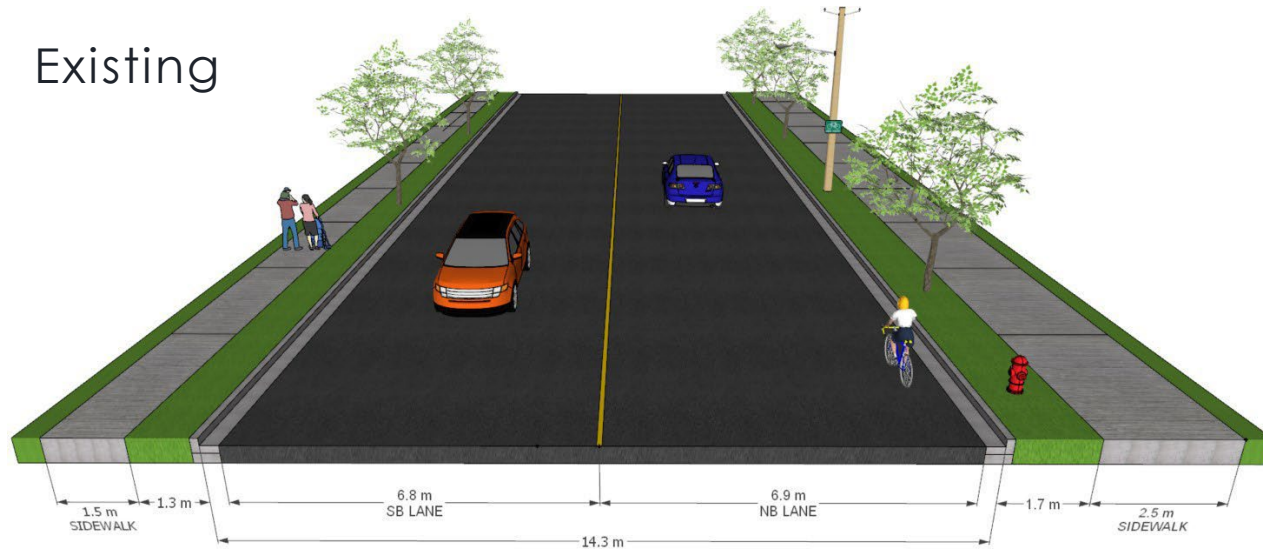
# Parkland Drive Concept 2

Project Introduction

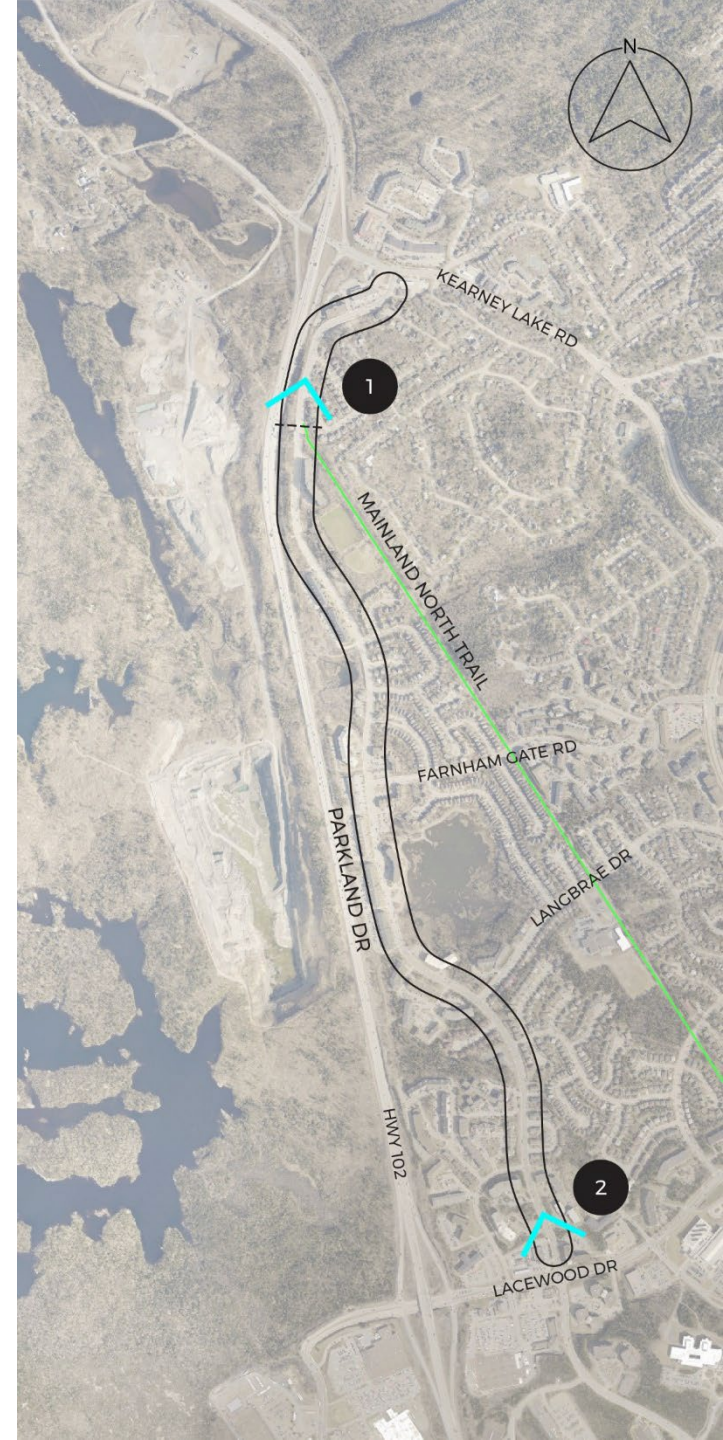
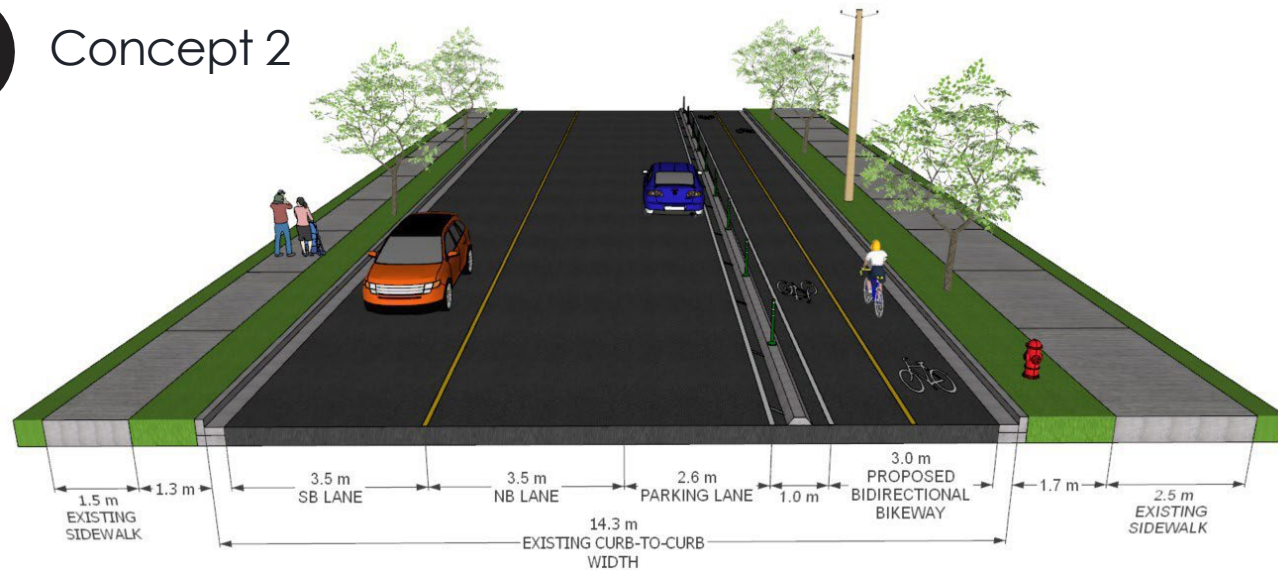
Concept Discussion

Next Steps

## 1 Existing



## 1 Concept 2





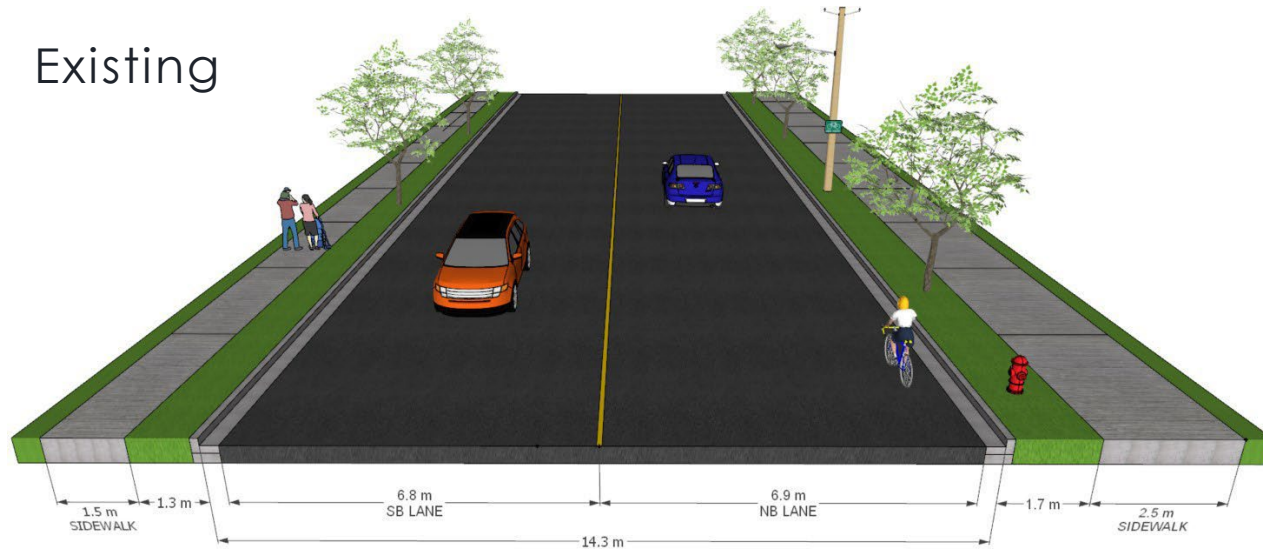
# Parkland Drive Concept 3

Project Introduction

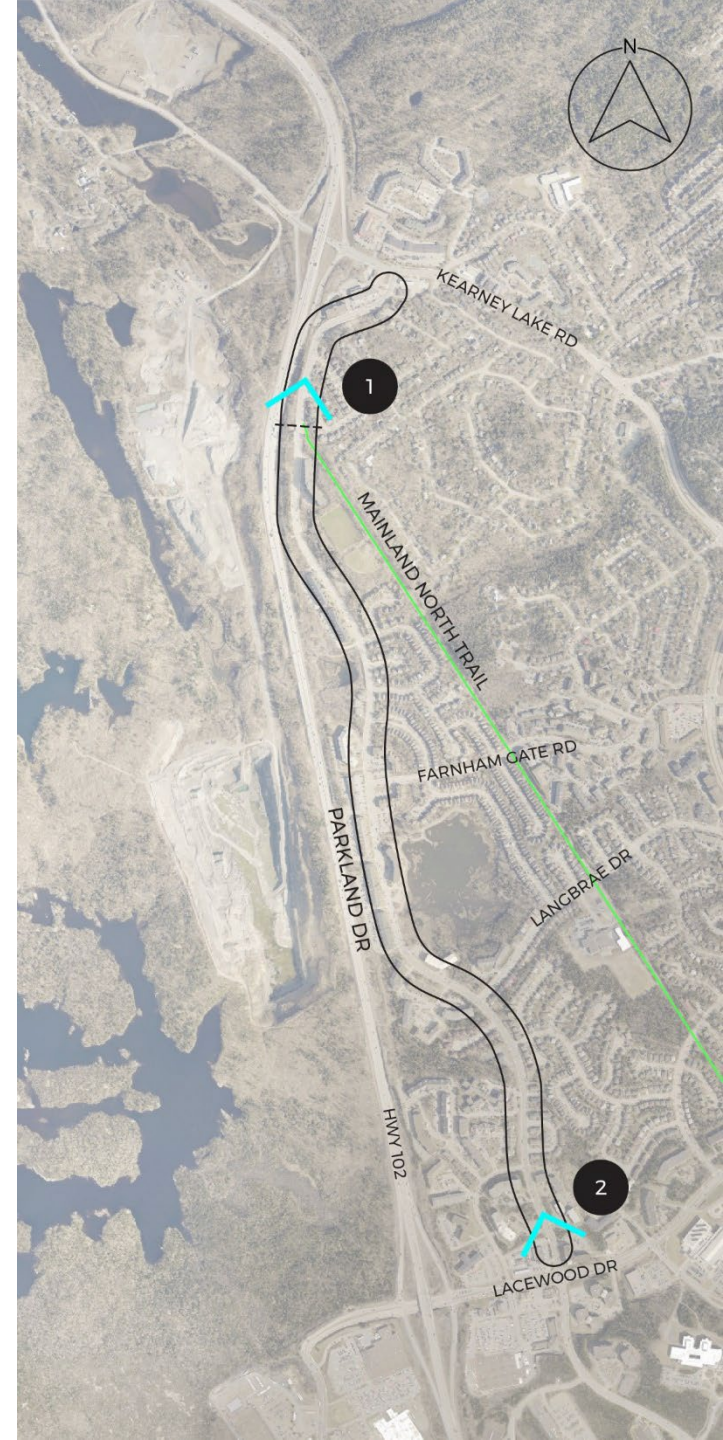
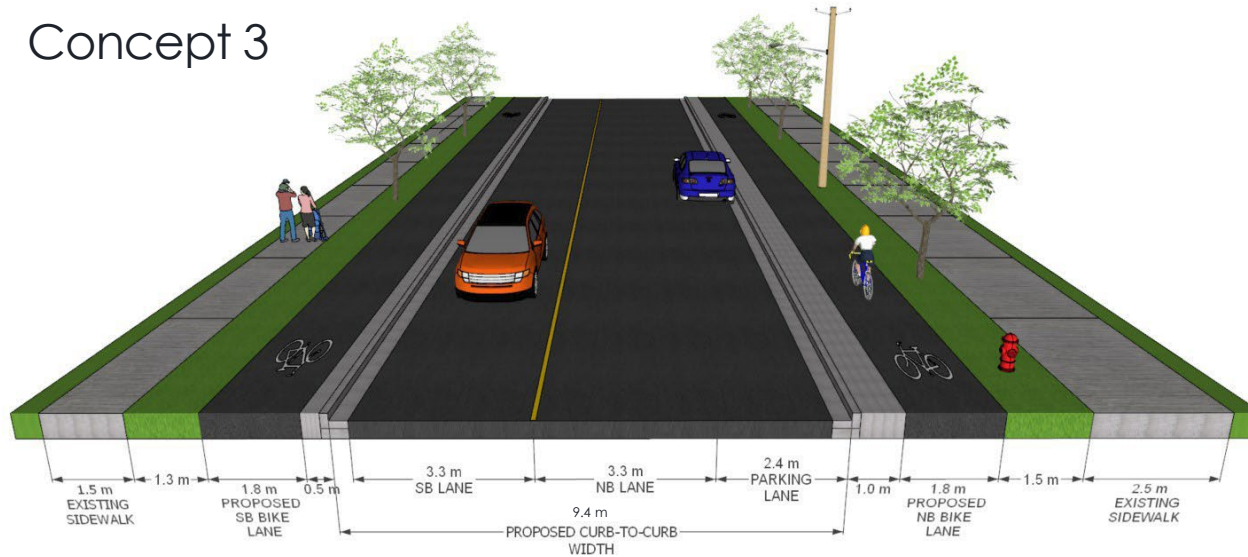
Concept Discussion

Next Steps

## 1 Existing



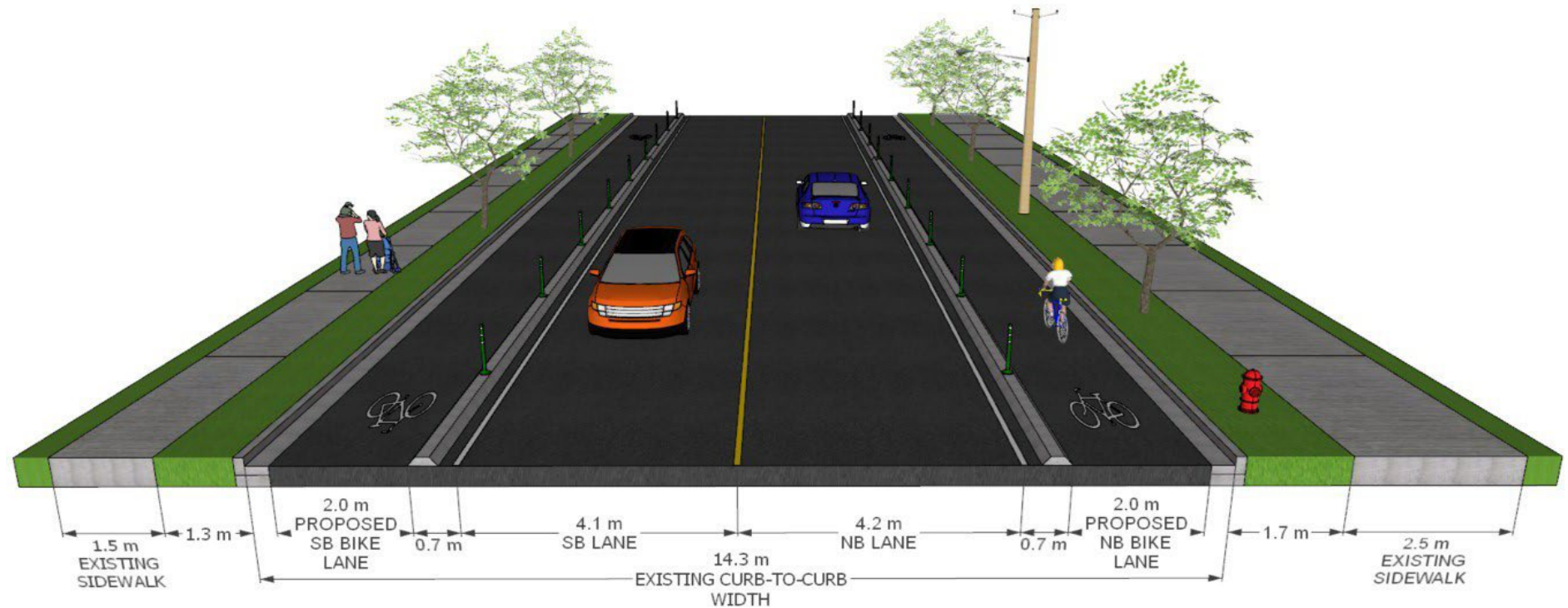
## 1 Concept 3



# Parkland Drive - Selected Concept

Based on the results of high-level analysis, unidirectional protected bike lanes are recommended for implementation along Parkland Drive, with a key contributing factor being the benefits associated with providing access to origins, destinations and existing/future bikeway routes located on both sides of the road.

Due to the anticipated roadwork planned not being full recapitalization, it is recommended that HRM consider implementation of a tactical installation (Option 1).







Project  
Introduction

Concept  
Discussion

Next Steps

# REFINED CONCEPT OPTION

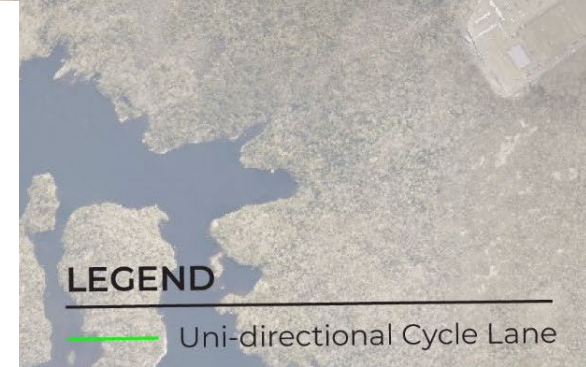
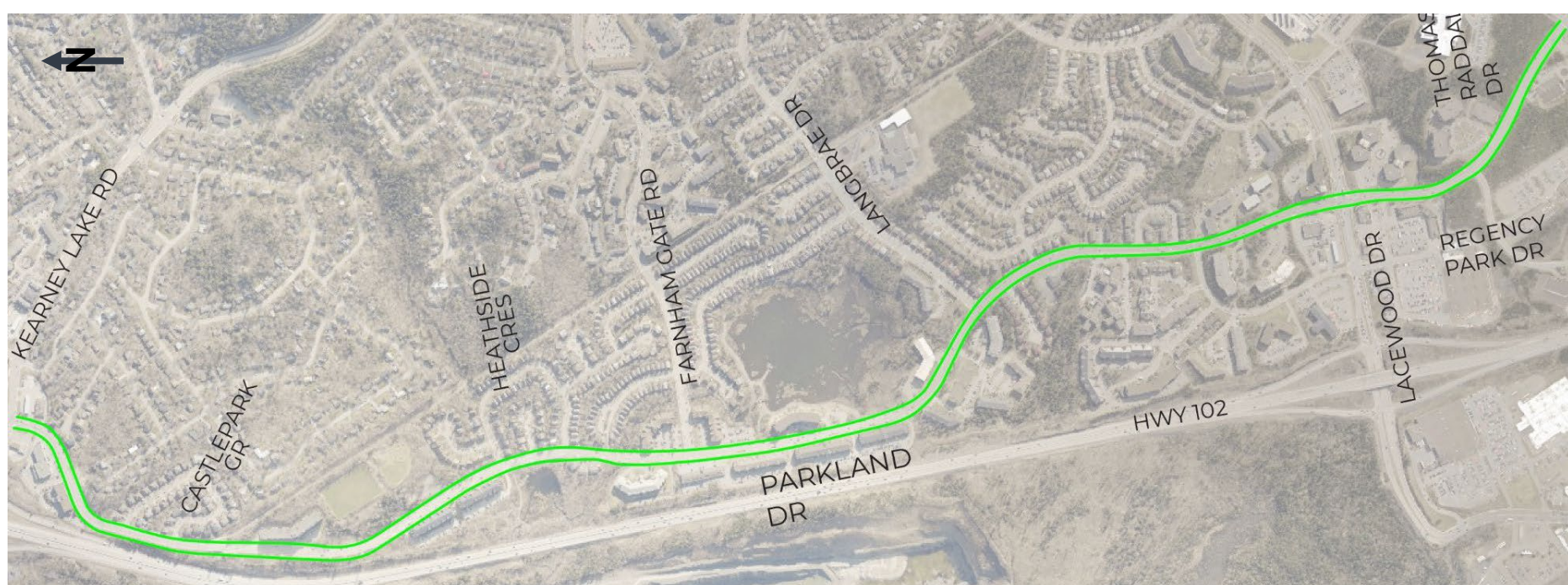


# Refined Concept

Project Introduction

Concept Discussion

Next Steps





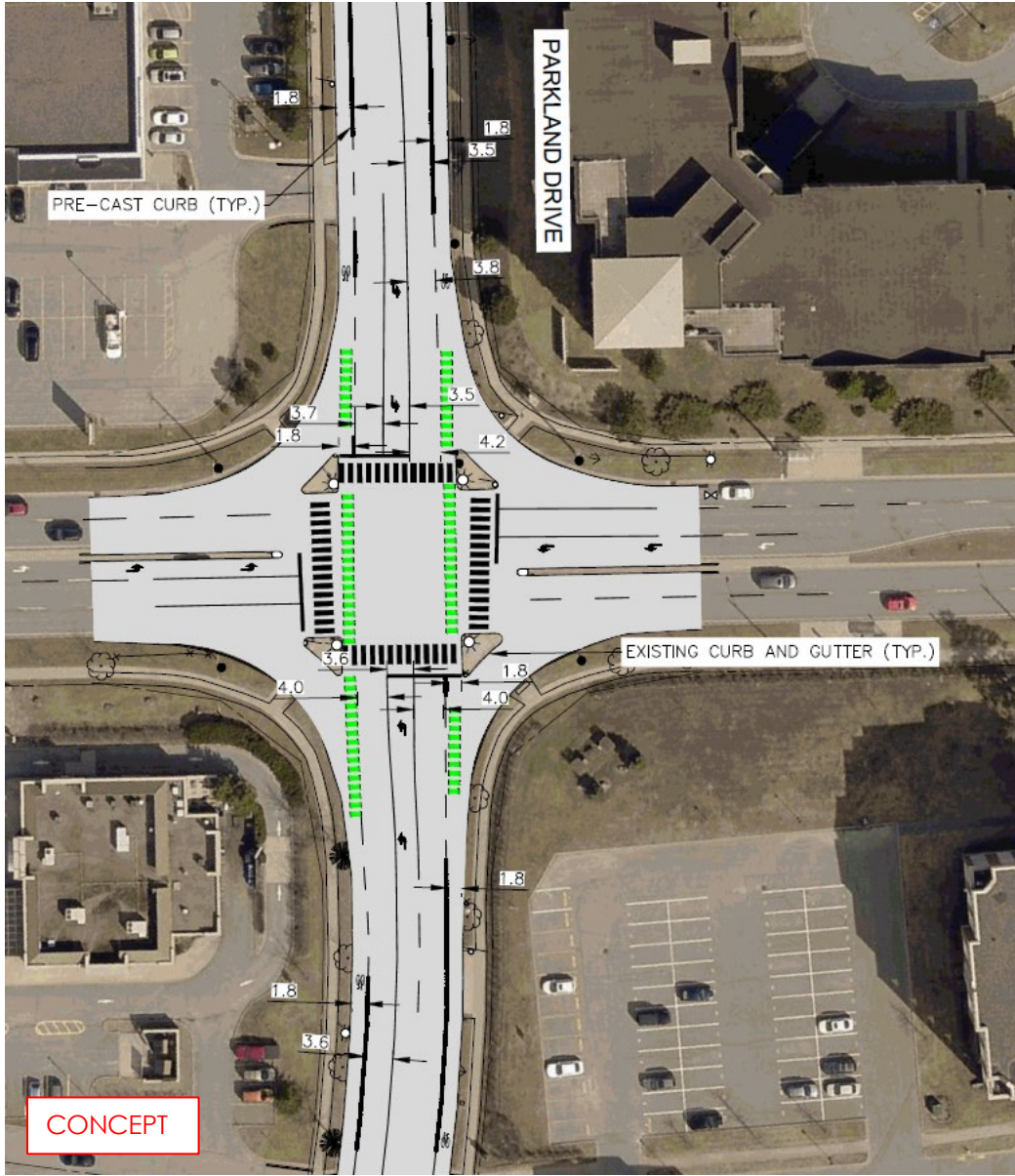
# Refined Concept: Parkland at Lacewood Intersection Options

Project  
Introduction

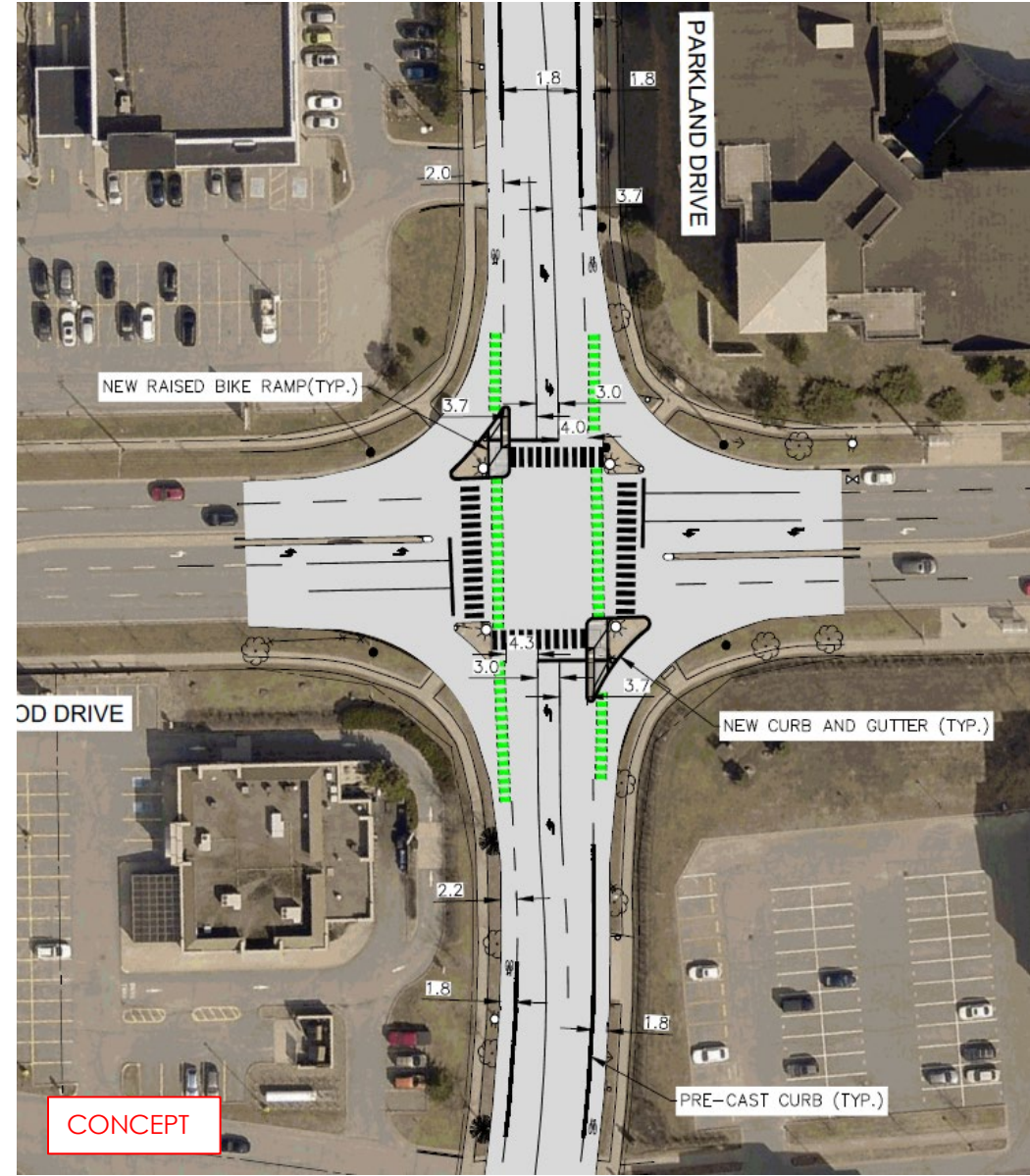
Concept  
Discussion

Next Steps

## Option 1



## Option 2





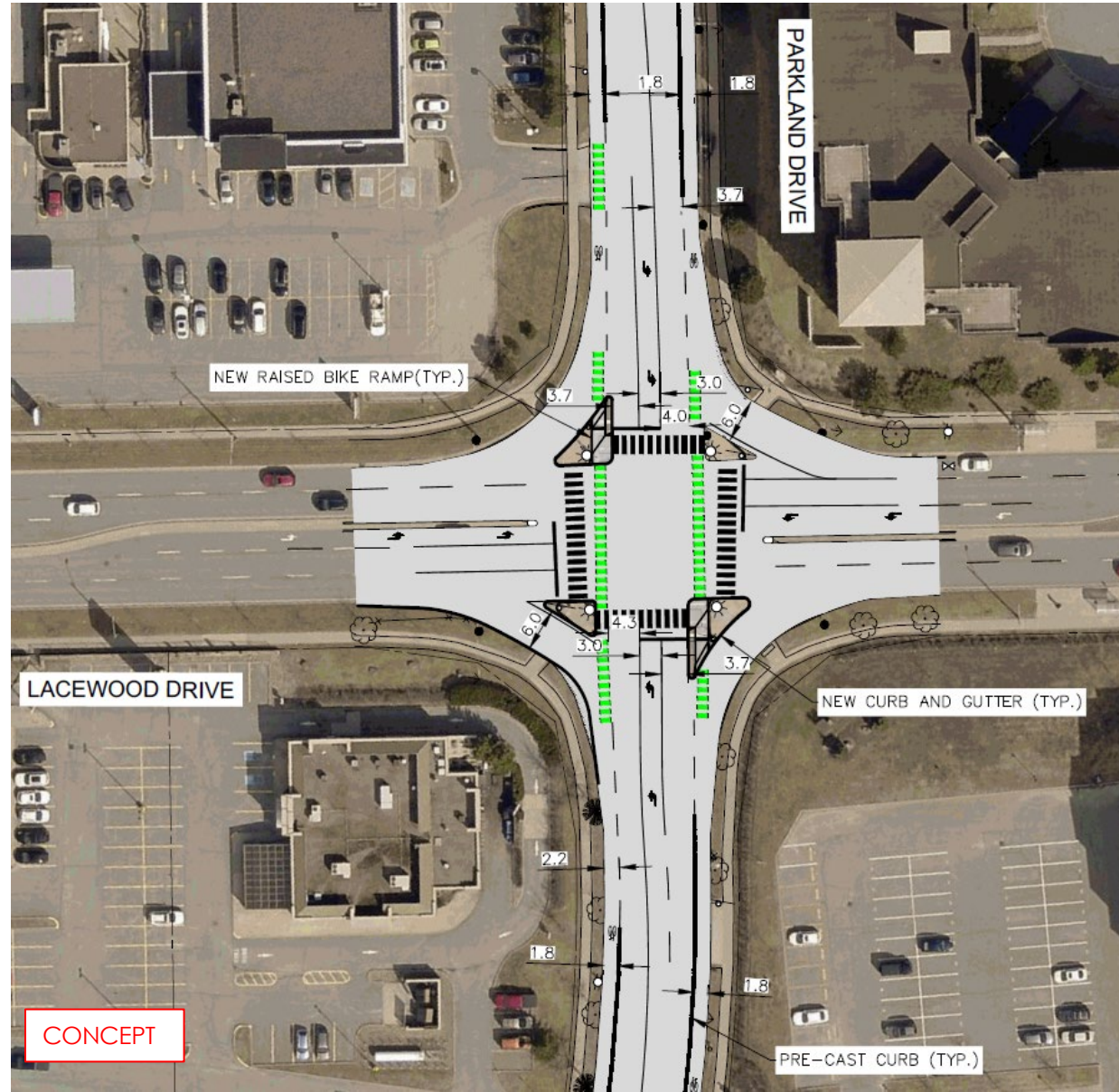
# Refined Concept: Parkland at Lacewood Intersection Options

Project Introduction

Concept Discussion

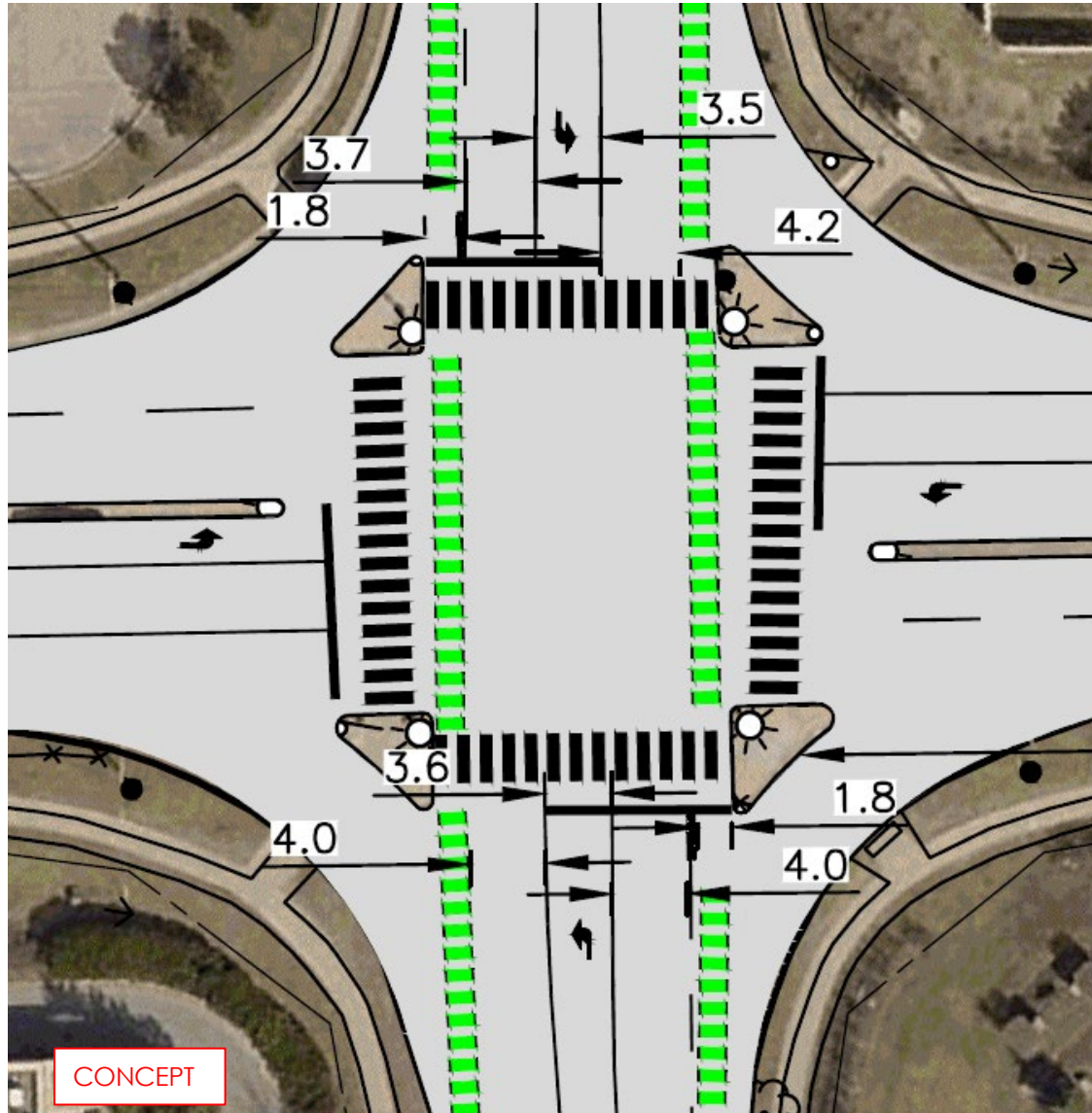
Next Steps

## Option 3

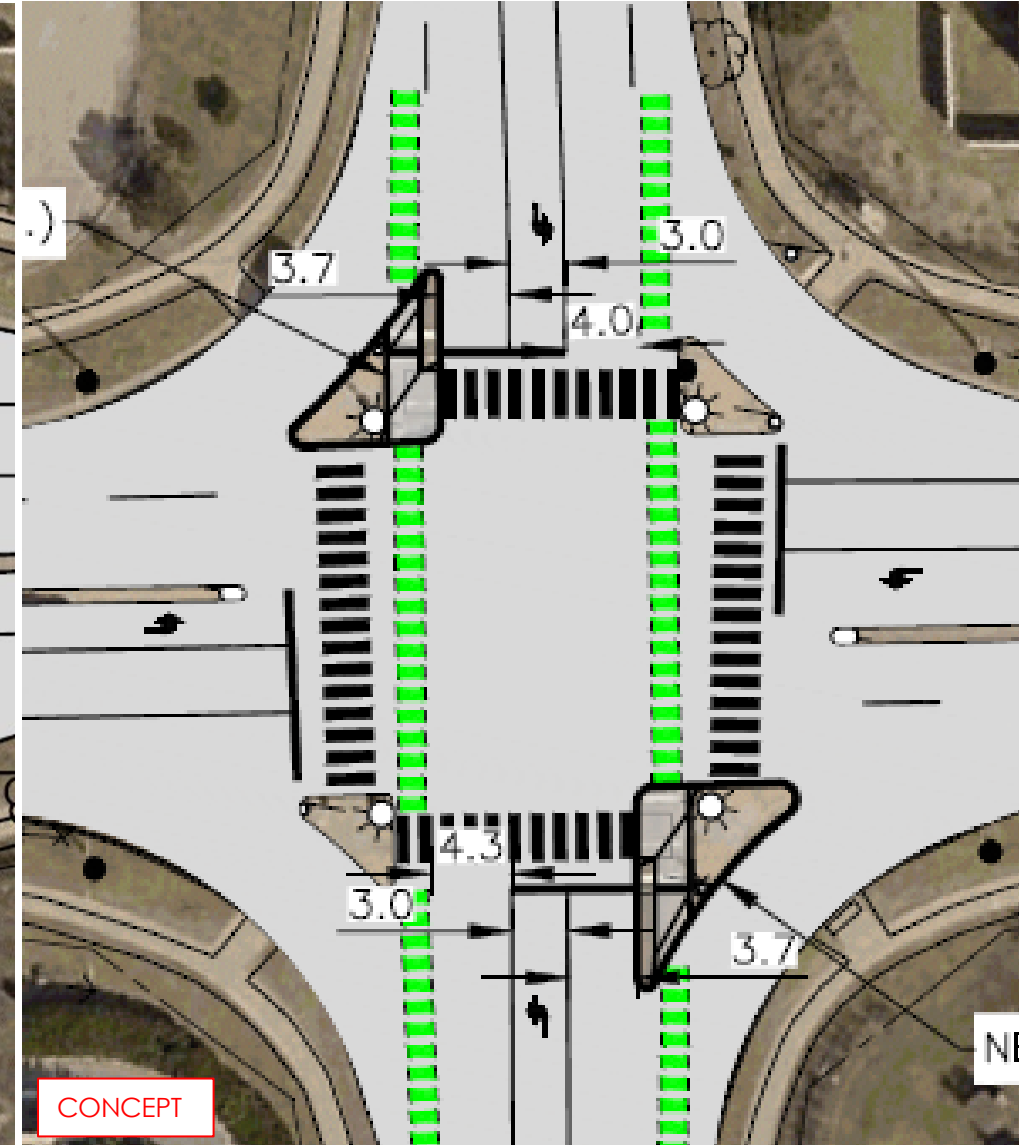


# Refined Concept: Parkland at Lacewood Intersection Options

## Option 1



## Option 2





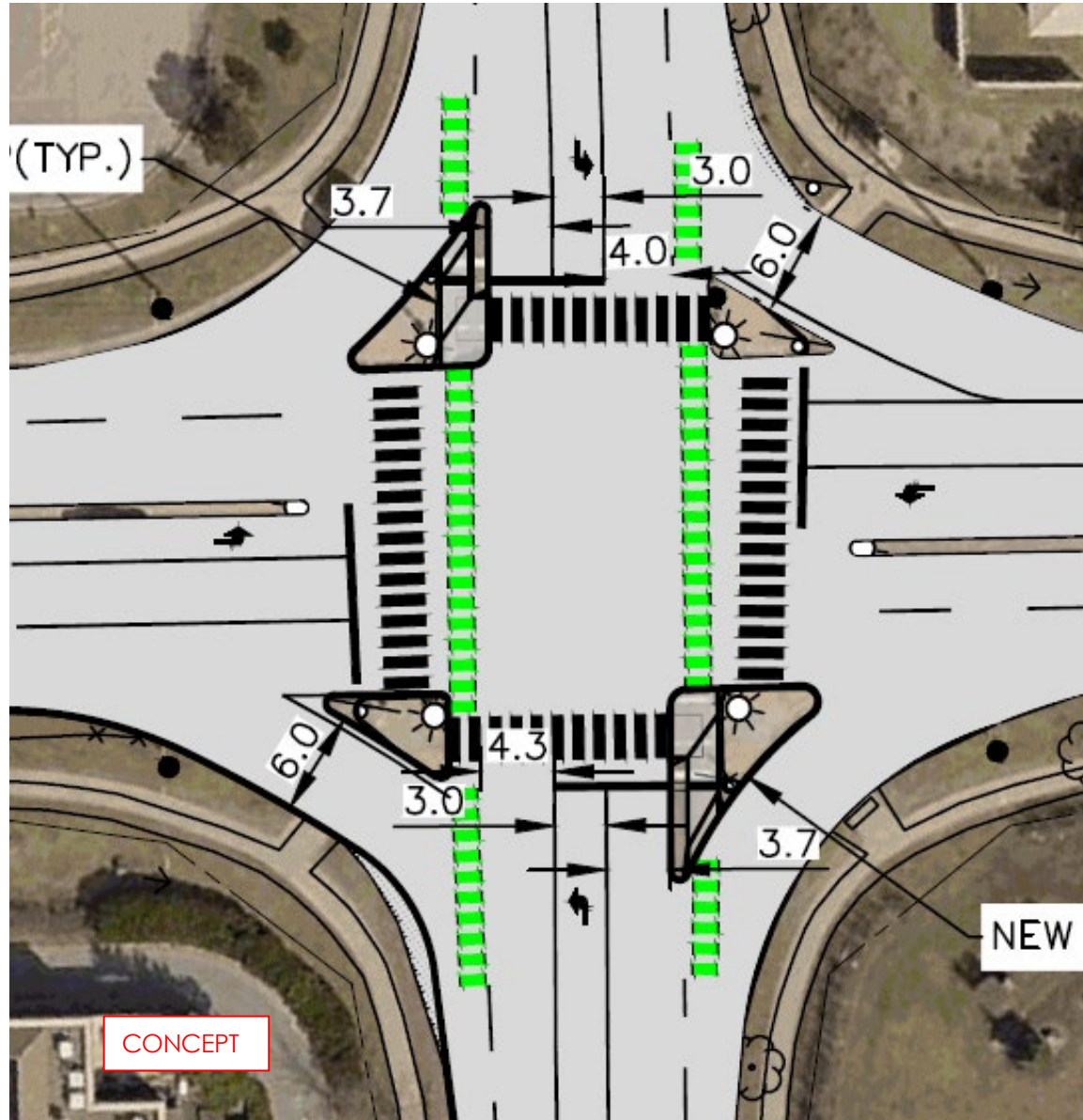
# Refined Concept: Parkland at Lacewood Intersection Options

Project  
Introduction

Concept  
Discussion

Next Steps

### Option 3





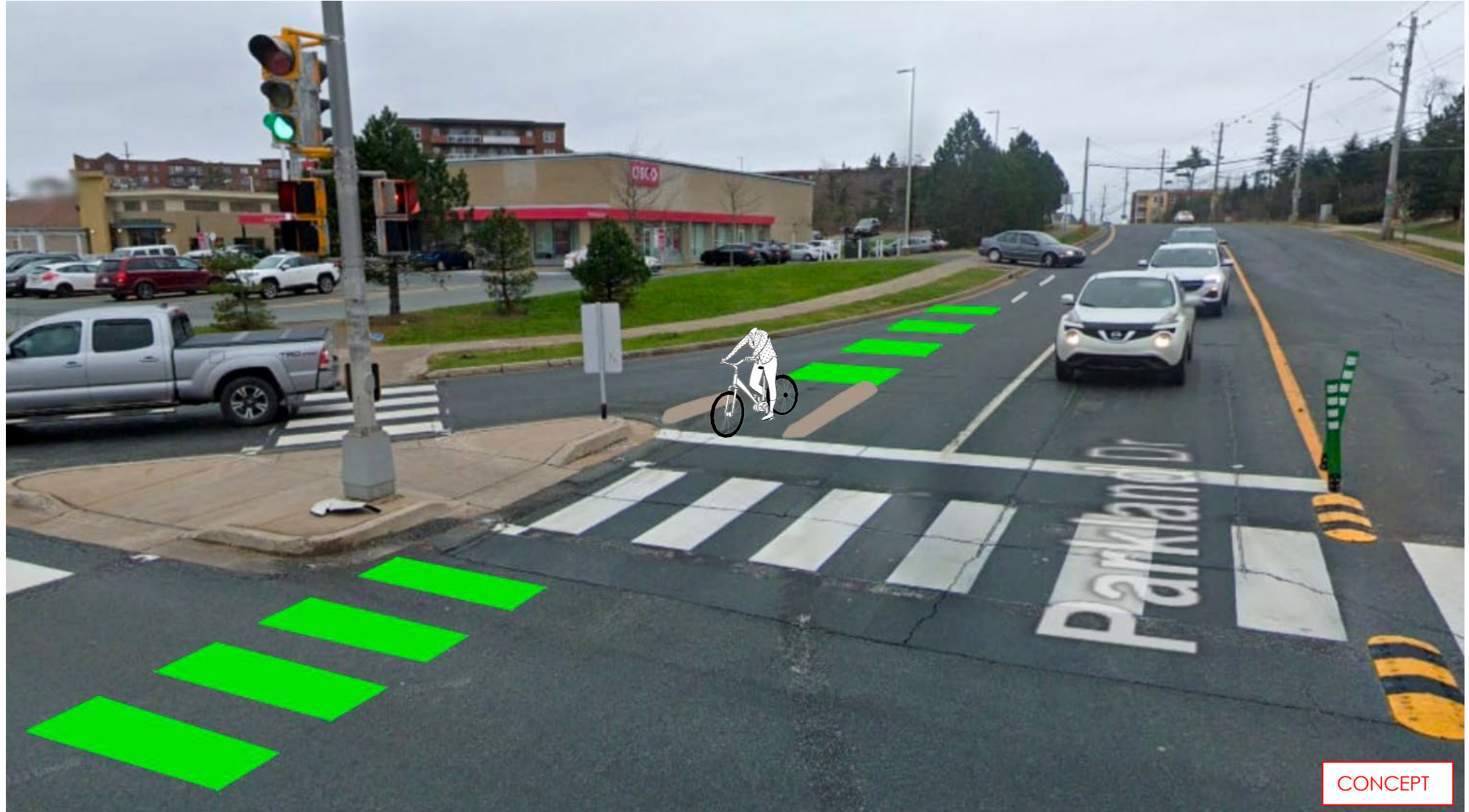
# Refined Concept: Parkland at Lacewood Intersection

## Option 1: What it could look like

Project  
Introduction

Concept  
Discussion

Next Steps



# Refined Concept: Parkland at Lacewood Intersection

Option 2/3: What it could look like: Macdonald Bridge Example





# Refined Concept: Left Turns at Intersections

Project  
Introduction

Concept  
Discussion

Next Steps





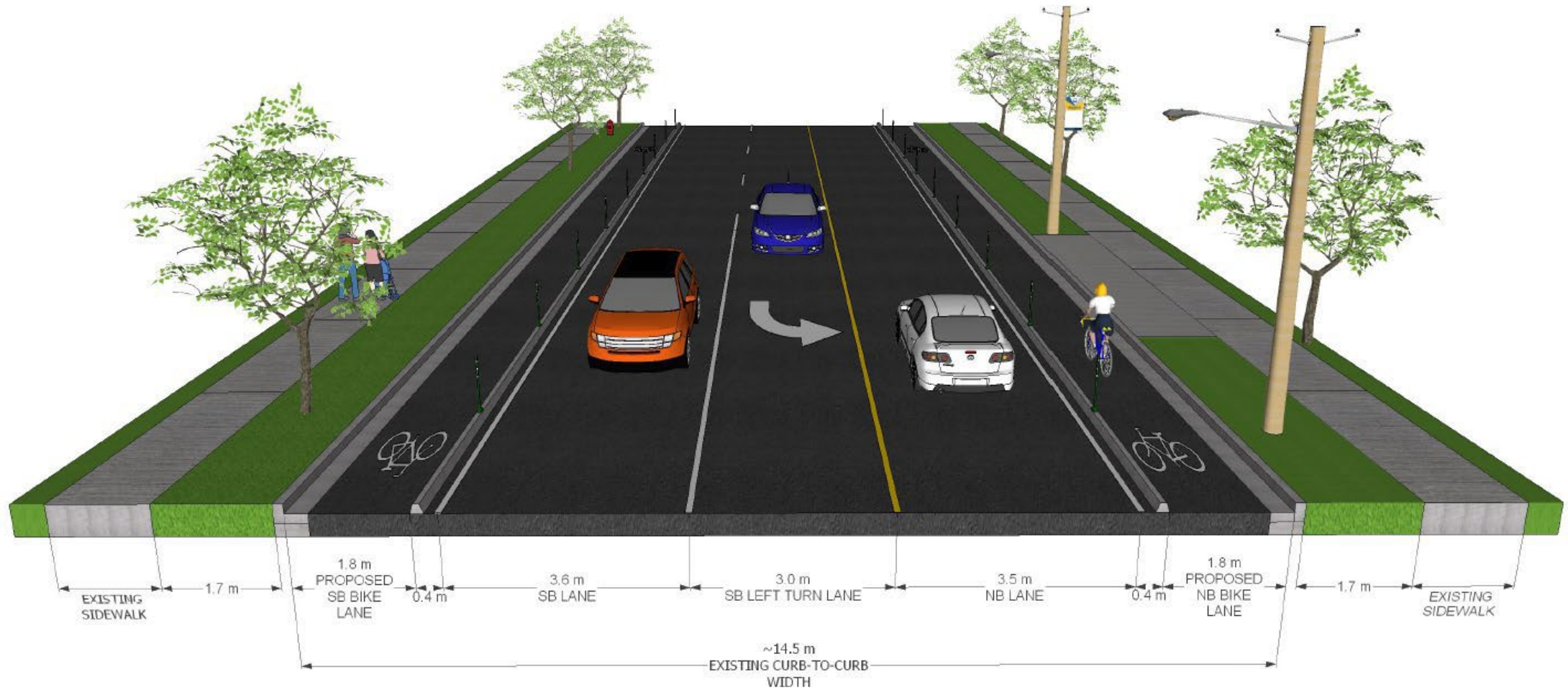
# Refined Concept: Left Turns at Intersections

## Cross-section: Option 1

Project Introduction

Concept Discussion

Next Steps





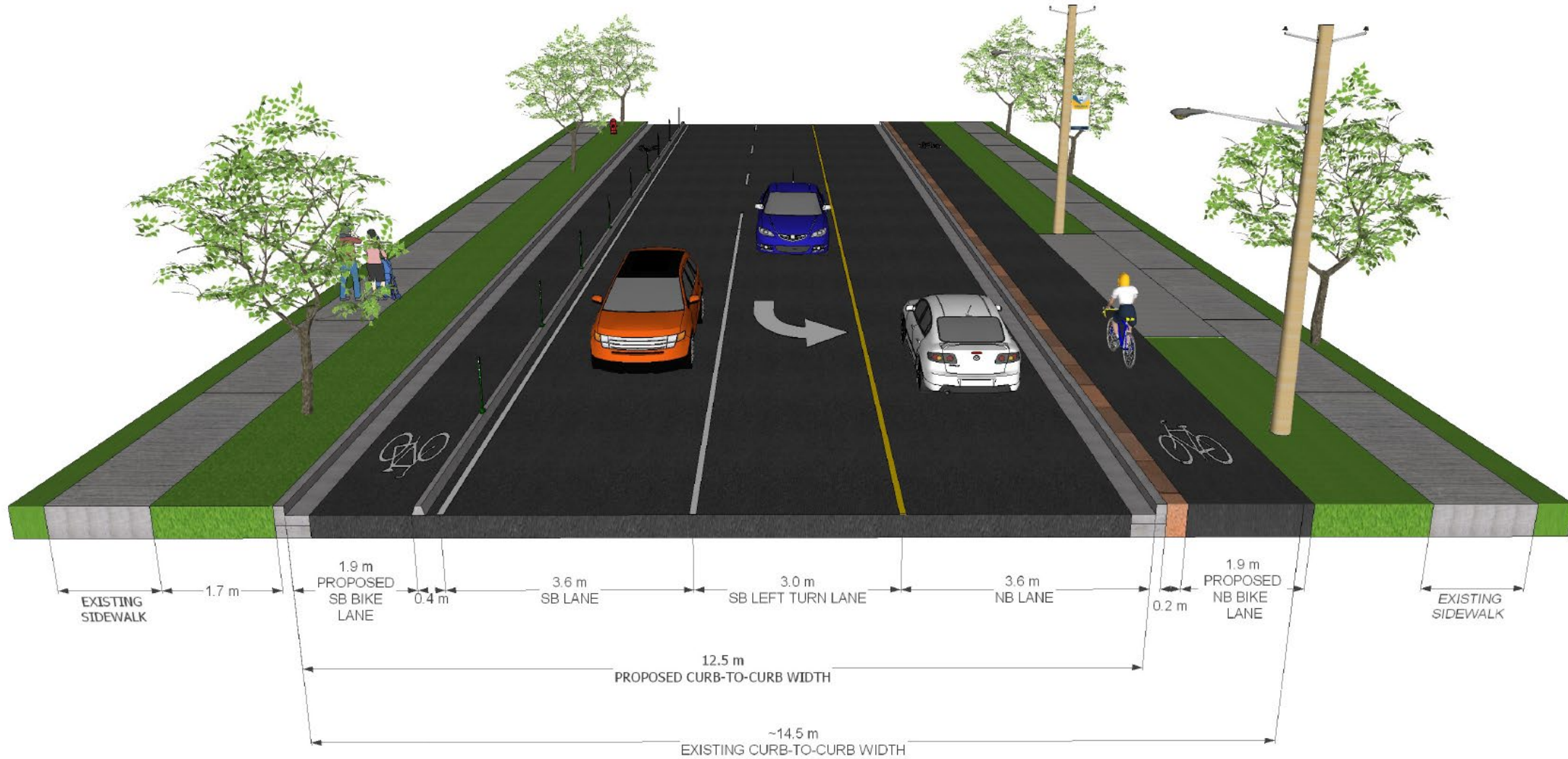
# Refined Concept: Left Turns at Intersections

## Cross-section: Option 2

Project Introduction

Concept Discussion

Next Steps





# Refined Concept: Left Turns at Intersections

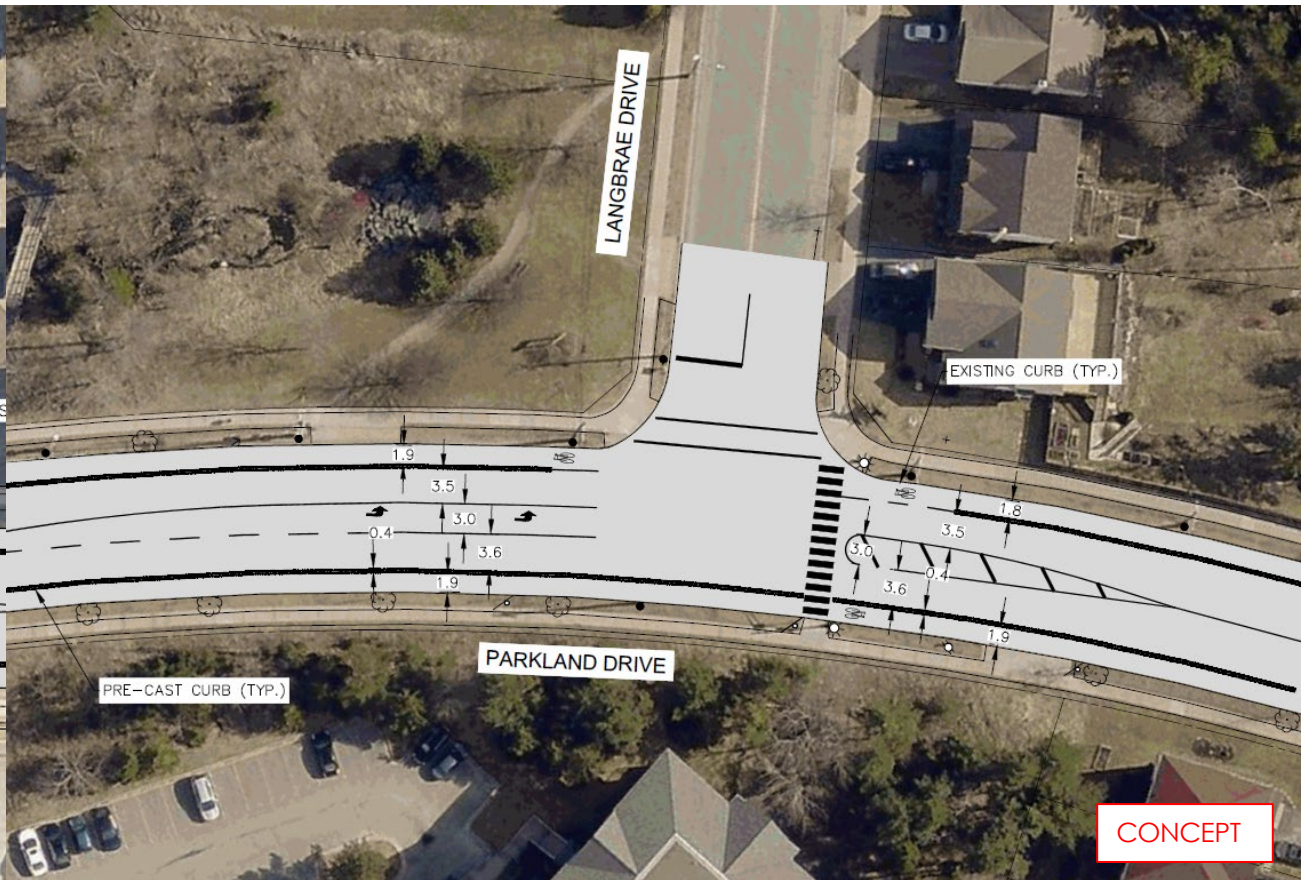
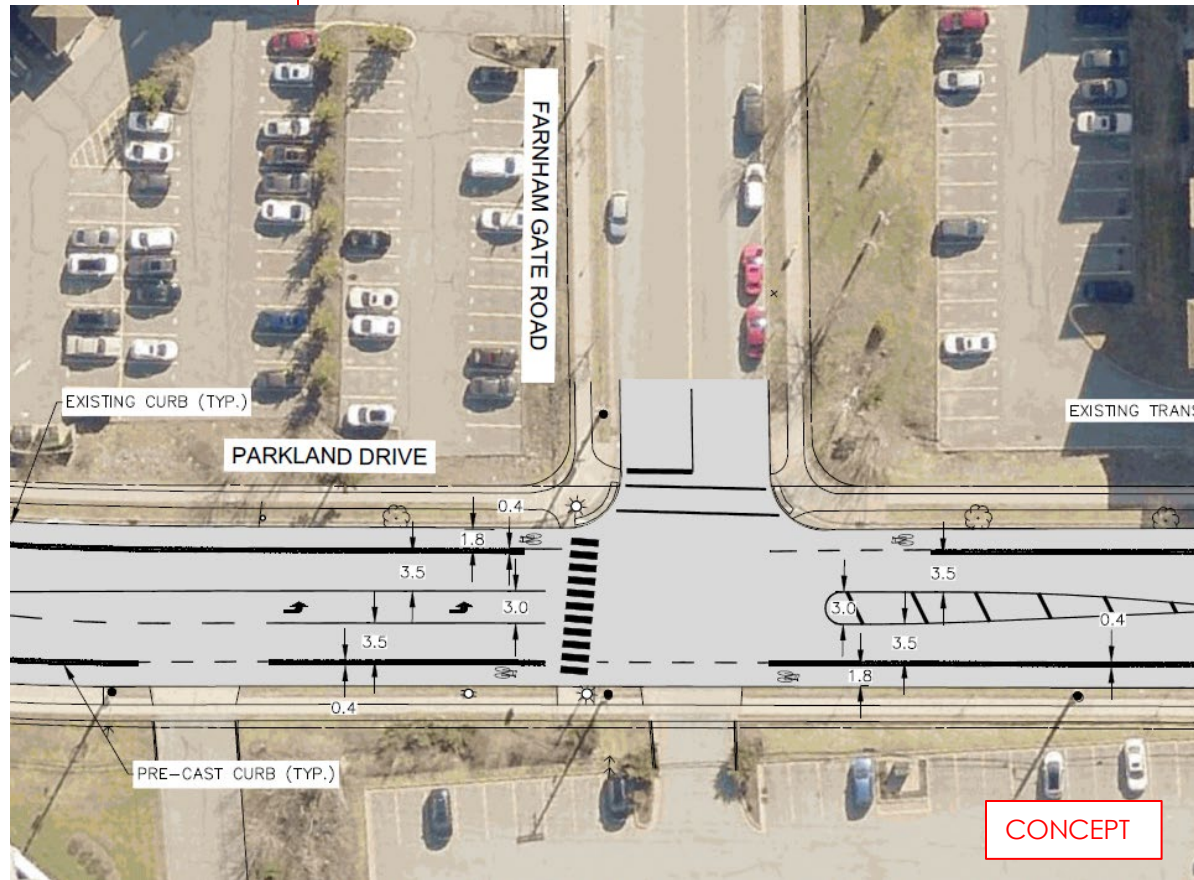
Project  
Introduction

Concept  
Discussion

Next Steps

## Farnham Gate Road

## Langbrae Drive

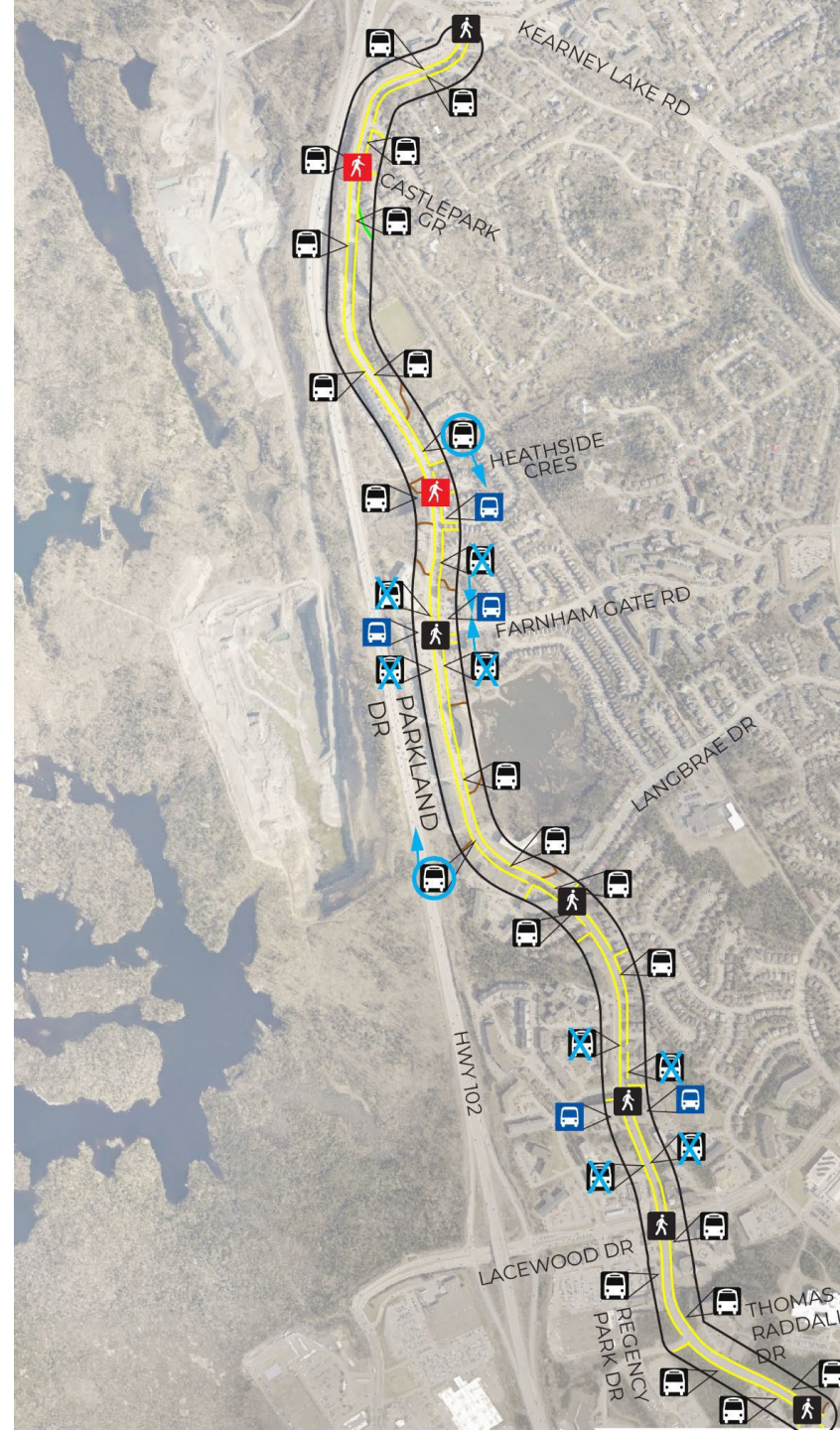




# Refined Concept – Transit and Pedestrians

The refined concept proposes:

- keeping existing sidewalks on both sides of the road,
- two new pedestrian crossings:
  - at the northern-most access to Heathside Crescent,
  - second at the southern-most access to Castlepark Grove,
- consolidation of transit stops (to be confirmed by HRM Transit team).



## LEGEND

- Concrete Sidewalk
- Multi-Use Pathway
- Trail
- Existing Bus Stop
- Proposed Bus Stop
- Existing Crosswalk
- Proposed Crosswalk

# Refined Concept: Transit Stops

Project  
Introduction

Concept  
Discussion

Next Steps







Project  
Introduction

Concept  
Discussion

Next Steps

# NEXT STEPS

# Next Steps

Project Introduction

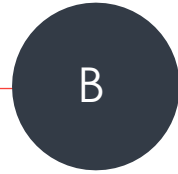
Concept Discussion

Next Steps



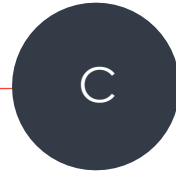
## Project Initiation – April 2025

- ✓ Host Kick-Off meeting (April 15)
- ✓ Site visit/Topographical Survey



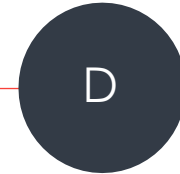
## Refine Concept– May-June 2025

- ✓ Develop a base map
- ✓ Refine Concept Design Considerations
- ✓ Technical Committee Meeting #1 (June 5)



## Engagement – June-August 2025

- ✓ Public Engagement (June 18)
- Present to ATAC and AAC, June 16<sup>th</sup> and 19<sup>th</sup> meetings
- Technical Committee Meeting #2 (week of July 14)



## Functional Design & Reporting – June-August 2025

- Prepare Draft Functional Design (week of June 30)
- Final Functional Design Submission (week of July 28<sup>th</sup>)

Finished



Thank You

