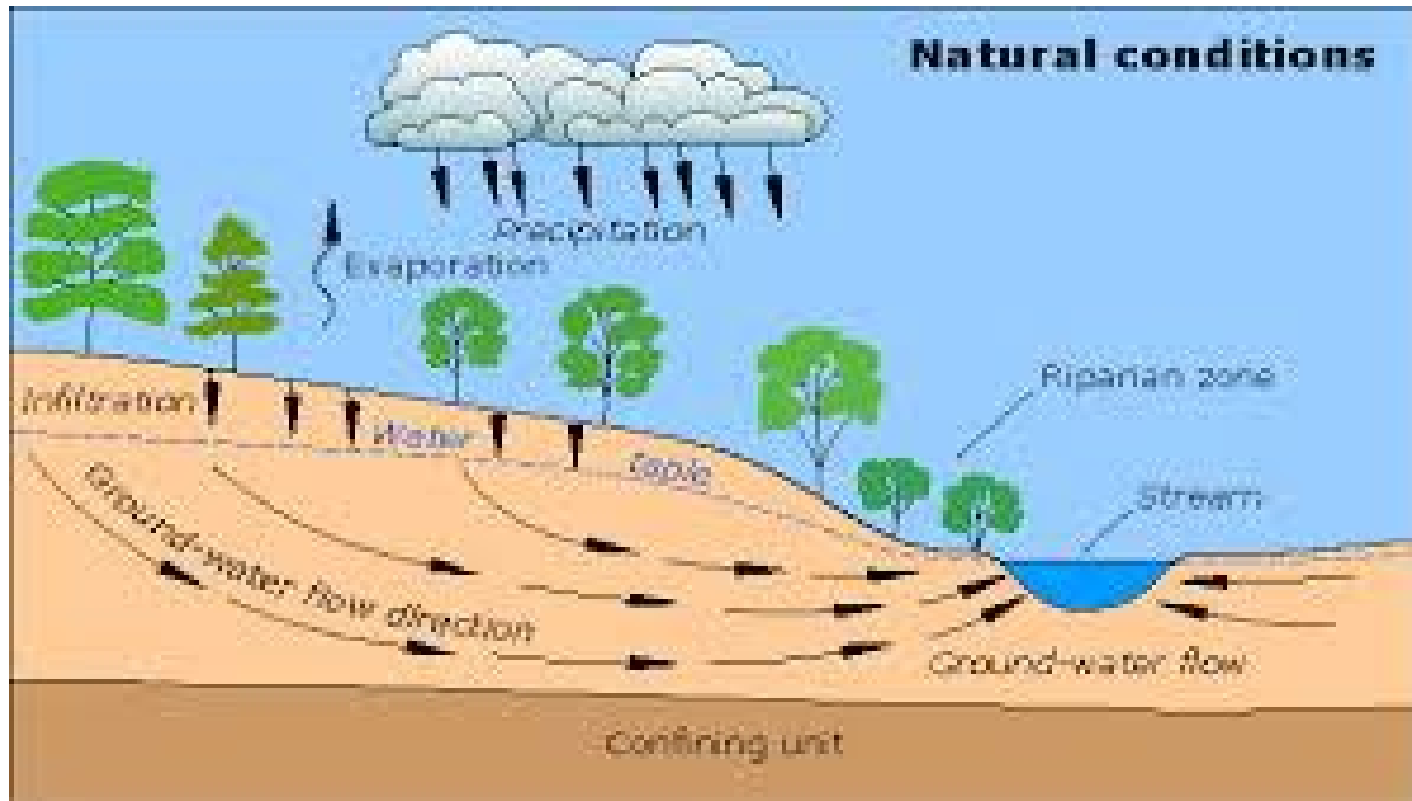


Item 10.3.3

Silty Groundwater Discharge to Wetlands & Streams



How Does This Happen?



Eisners Wetland



Southdale Development



Southdale Development 2022



Southdale Development



Eisners Wetland



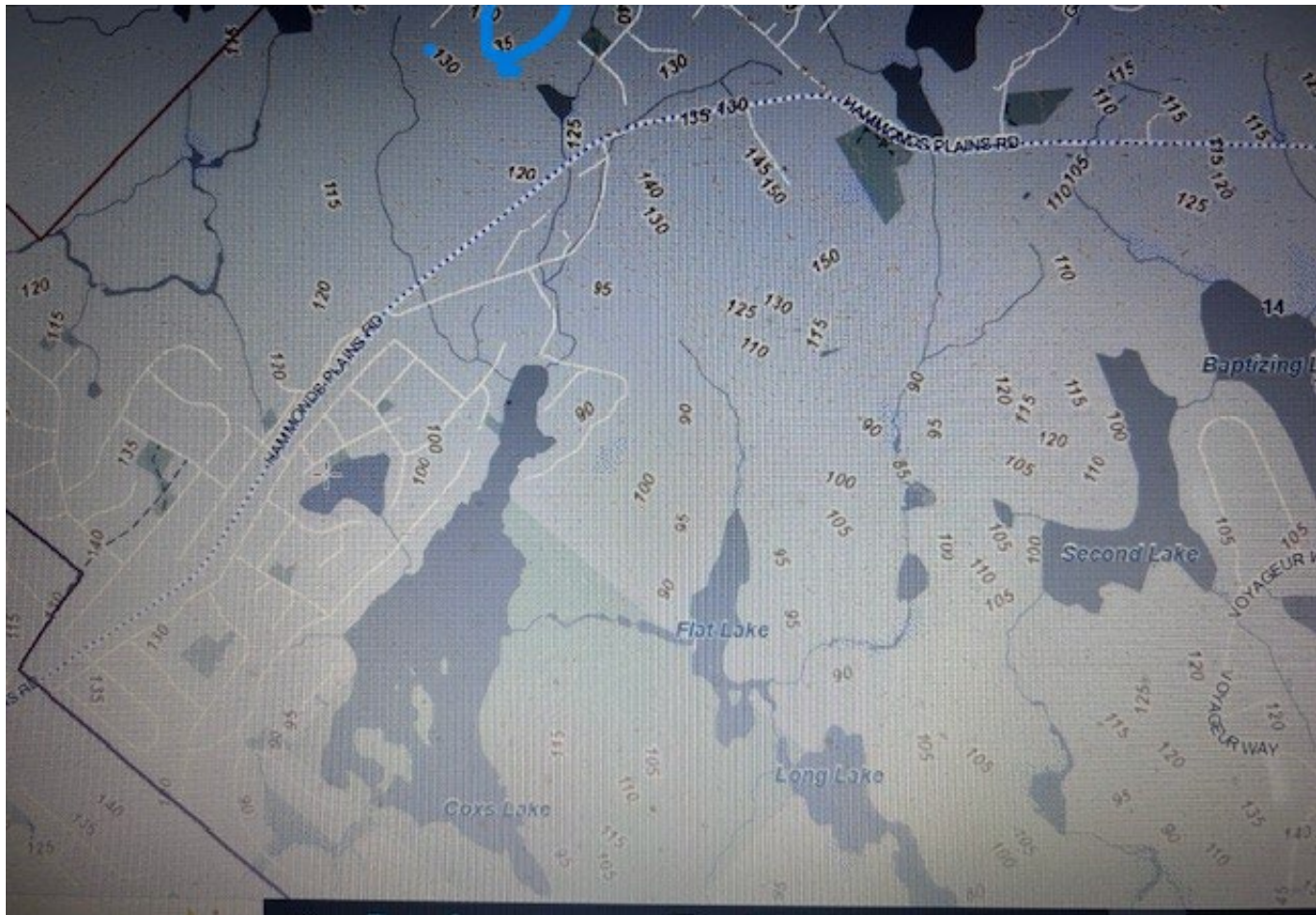
Eisners Wetland



Southdale Development



Perry's Pond Development



Perry's Pond Development



Perry's Pond Development



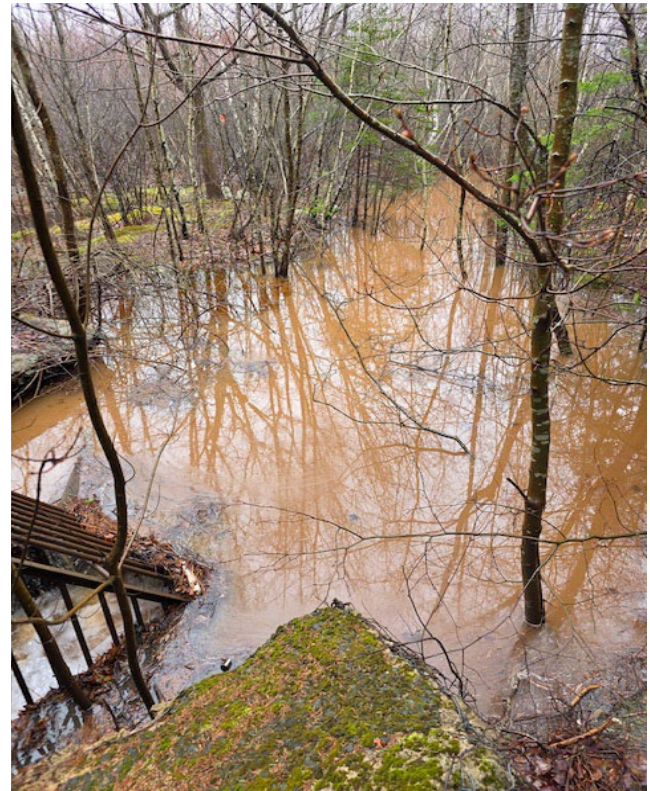
Voyageur Estates



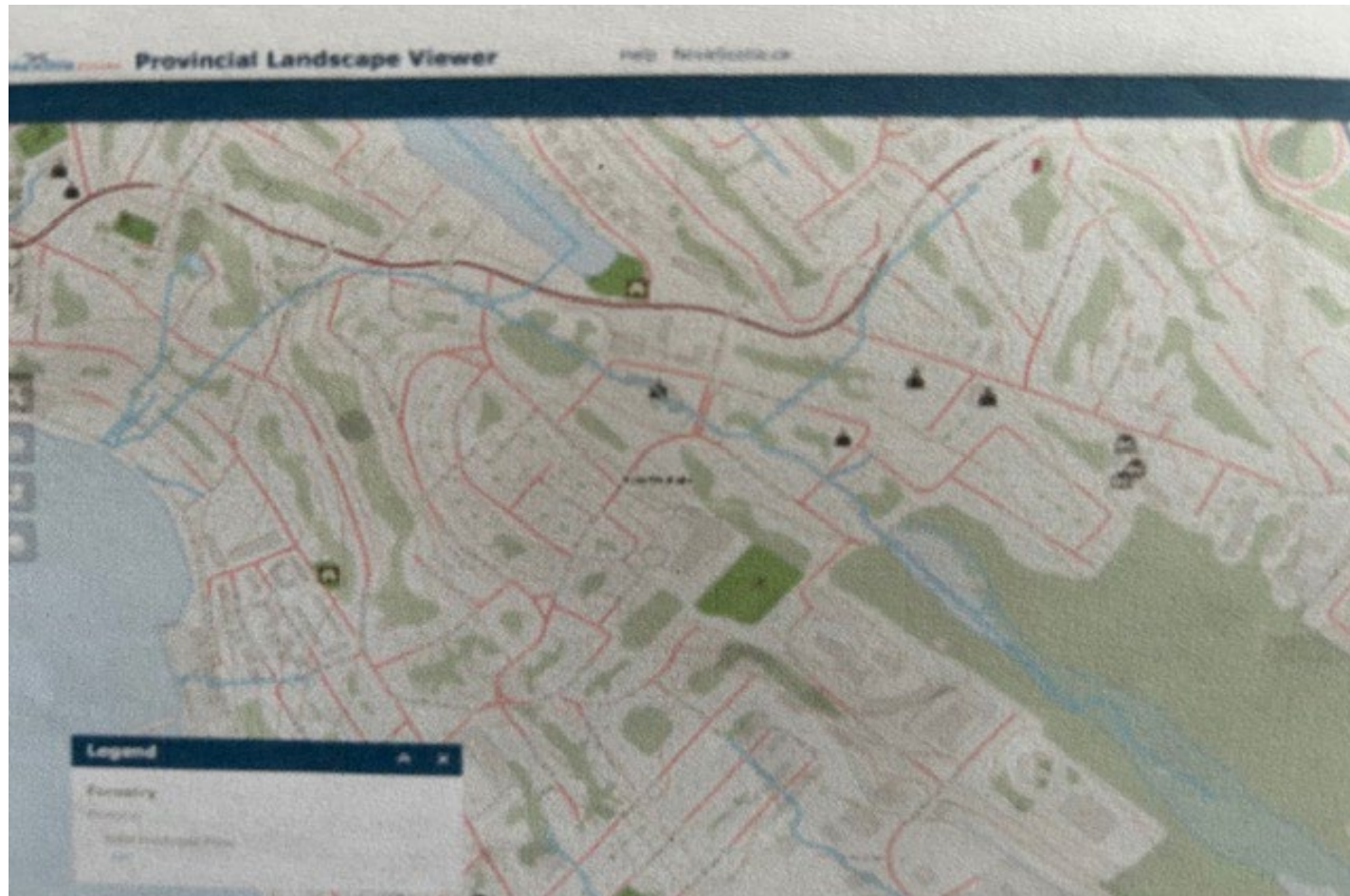
Southdale 2024



Southdale / Eisners Wetland 2025



Stormwater Flow HW



Higher Intensity Shorter Duration Rainfall Events



Solutions?

- Be Proactive, not reactive
- Require Groundwater be assessed
in addition to Surface Water
- Use grain size analysis to assess
whether an issue (silty sand till)
- Amend By-Laws:
 - Lot Grading L-400, Grade Alteration &
Stormwater Management G-200, ??

Solutions?

- Require specifications for preventative measures in Grade Alteration / Lot Grading Permits
- Buffers should not include any grade alteration, tree cutting, nor surface water collection ponds
- Surface water collection ponds should be partially lined & intercept shallow groundwater

Solutions?

- Integrate Surface Water and Groundwater Management Plans to ensure no flooding nor dryouts of receiving waters
- Design to incorporate 1 in 200 yr storm events as feds have been doing since early 2000's

New Goodwood Organic Processing Facility

