

May 22, 2025

HALIFAX

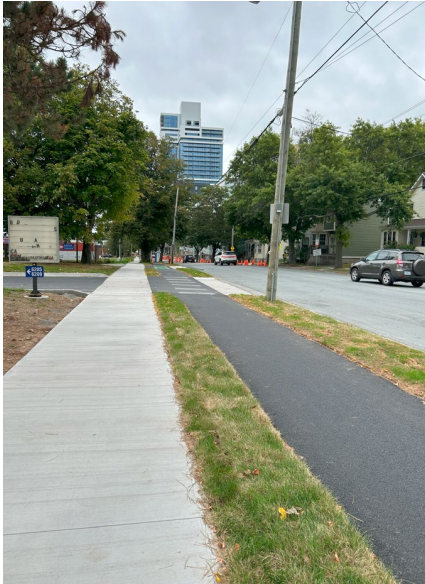
Regional Centre All Ages and Abilities Bikeway Network

Update to Transportation Standing Committee

Original AAA Plan



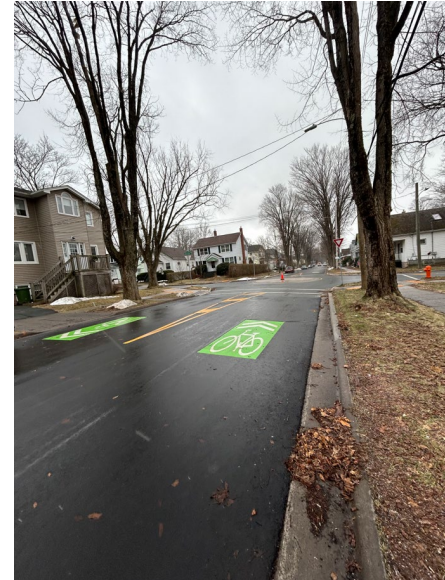
Types of AAA Facilities in HRM



Protected Bike Lane (Almon St.)



Multi-use Pathway (Joe Howe)



Local Street Bikeway (Liverpool)

2

Completed to Date

Facility Type	#km targeted	#km built to Dec 2024	% completed
Protected Bike Lane	21	9	42.7%
Local Street Bikeway	14	4	30.4%
Multi-use pathway	19	16	86.1%
Total target (*)	53	29	54.5%

Project Management Office

In 2024, HRM Public Works established an internal Project Management Office. The PMO has a dedicated manager, three program managers, including a dedicated AAA Program Manager and 5 full-time project managers.

PMO and AAA Program Manager:

- Aligning segments with program goals
- Coordinating teams
- Monitoring progress and addressing issues, ensuring overall program delivery as planned



In House Design and Delivery

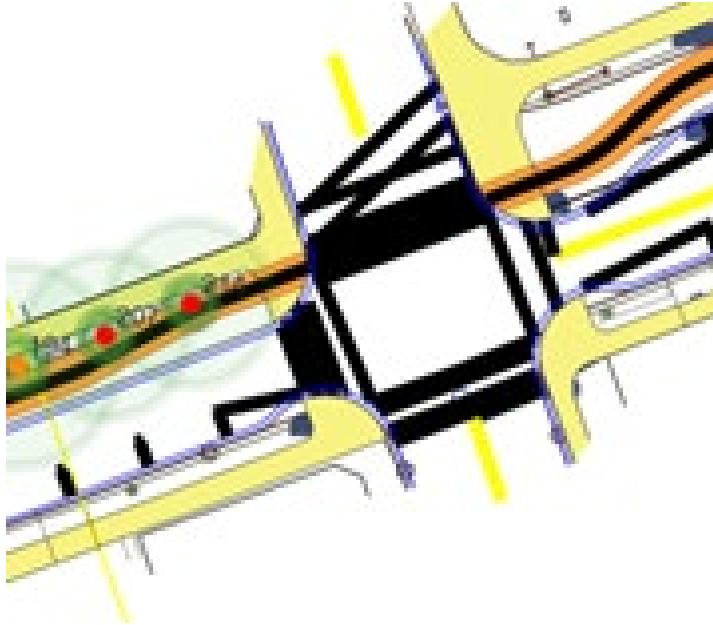


AAA projects of a medium to low complexity are designed and delivered in house.



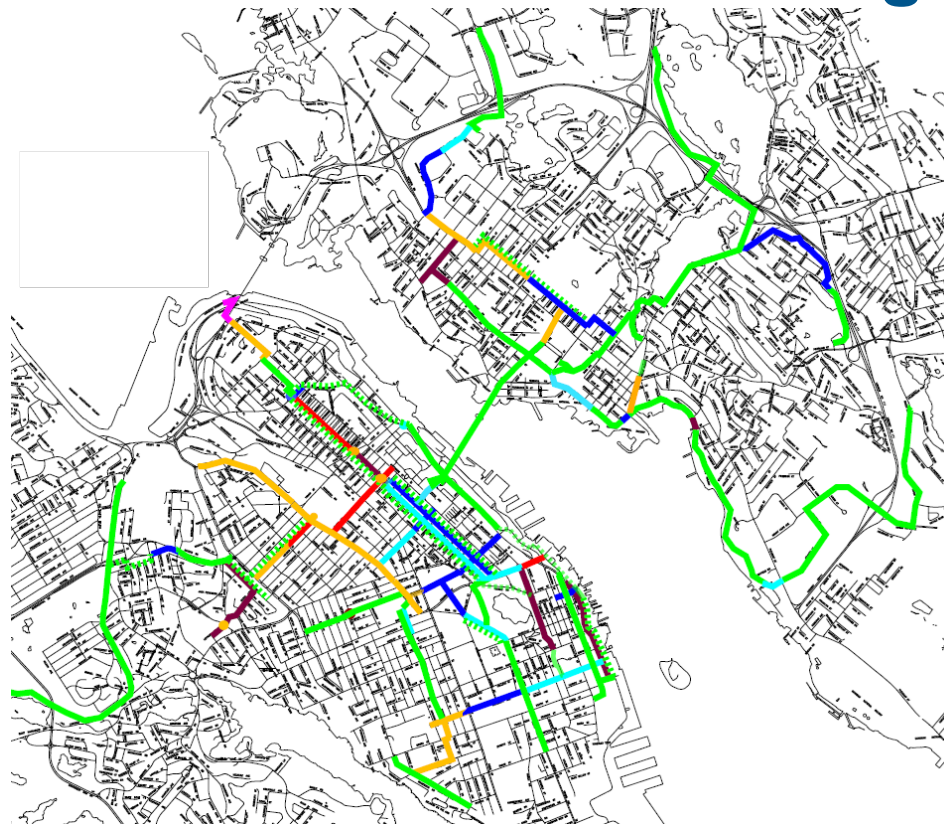
Meet monthly with the AAA Program Manager to review designs, milestones, schedule and project specific risks.

Projects Managed by the PMO



- Project segments managed by the PMO are designed externally and delivered by the PMO PM.
- Meet monthly with the consultant reviewing designs, milestones, schedule and risks.

Implementation of Remaining AAA Segments



HALIFAX

2025 Construction Season

Brunswick Street – Cogswell to Spring Garden (0.89km) – tendered

Farrell Street – MUP and Separated bi-directional bikeway (0.76km) - PTR

Lower Water – Terminal Road to Duke Street,(1.1km) – PTR completed

Isleville - Bloomfield to Young (0.47km) LSB – Final Design

George Dauphinee / Peter Lowe (1.0km) LSB – awarded

Allan/Harvard Diverter – PTR completed

Dartmouth Harbour (Parker to Old Ferry) – Design completed requires land acquisition

Planned kms to deliver: 4.4km

2026 Construction Season

Slayter St LSB – Thistle Street to Albro Lake – Functional Design – Design In House

University Avenue AAA- Phase 1 – Dalhousie Quad to Robie Street – PMO Delivered – Preliminary Design

Peninsula South - West Connection LSB – Cartaret Street - PMO Delivered – Preliminary Design

Isleville/Kaye/Young and Isleville/Almon Intersections – In House - Detailed Design

Welsford – Functional planning – In House

Windsor Street – Phase 1 – Functional planning – PMO Delivered

William Hunt - Mumford – Intersection – Functional planning – In house

Novalea MUP – Detailed design

Victoria Rd – Detailed design – PMO delivered

Liverpool Phase 2 – Functional planning – In house

Canal Greenway/ Sawmill Creek – PMO delivered as part of the Sullivan's Pond Project

Planned kms to deliver: 8.0km

Program Budget as of 2025

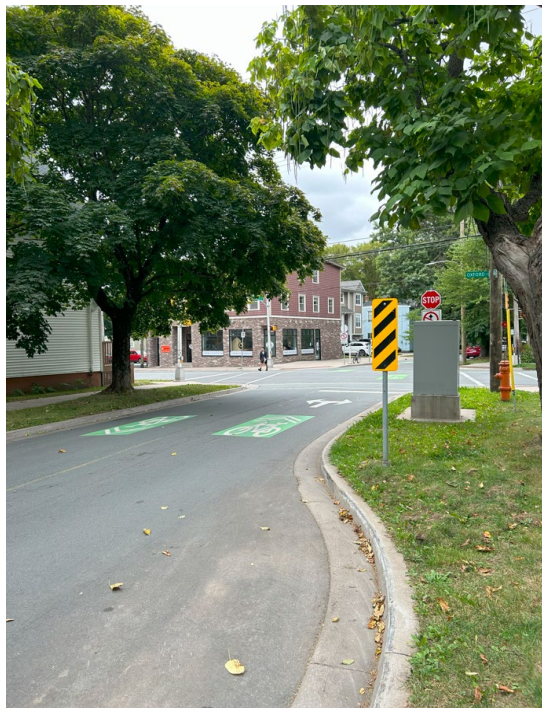
	Federal Funding	Provincial Funding	Municipal Funding	Total Program Cost
Total program cost to date of March 31, 2025	\$ 7,482,500*	\$ 4,987,835*	\$ 3,345,836	\$ 15,816,171
Fiscal Year 2025-26	\$ 4,885,000	\$ 3,224,100	\$ 1,660,900	\$ 9,770,000
Fiscal Year 2026-27			\$ 15,325,647	\$ 15,325,647
Fiscal Year 2027-28			\$ 17,794,000	\$ 17,794,000
Fiscal Year 2028-29			\$ 24,370,138	\$ 24,370,138
Fiscal Year 2029-30 & later			\$ 9,730,000	\$ 9,730,000
Total program cost	\$ 12,367,500	\$ 8,211,935	\$ 72,226,521	\$ 92,805,956

* Final numbers may vary. This figure includes an estimate for claim #7 which has not yet been received.

Risks to Program Implementation



Thank you – Questions?



Regional Centre All Ages and Abilities Bikeway Network

HALIFAX