



COUNCILLOR JANET STEELE

DISTRICT 12 NEWSLETTER

TIMBERLEA - BEECHVILLE - CLAYTON PARK - WEDGEWOOD

A MESSAGE FROM COUNCILLOR STEELE

Happy May, District 12!

It is hard to believe it is May already! I trust your spring is off to a good start and before we know it, summer will be here.

There are many wonderful events taking place this month, such as the Community Well-Being Expo, a bird walk in Belcher's Marsh, and the Senior's Recreation Services Public Engagement. Details can be found below in this newsletter.

Mother's Day is coming up and I want to wish all the mothers and mother figures out there a Happy Mother's Day. Thank you for everything you do. Your invaluable contributions shape families, communities, and our society.

As always, please feel free to reach out to me anytime with your municipal questions or concerns.



COUNCILLOR DROP-IN

I will not be hosting a Councillor Drop-In this month as I am hosting a Councillor and MLA Meet and Greet with MLA Adegoke Fadare. Details can be found below – I hope to see you there!

You're Invited

Meet & Greet with Councillor Janet Steele and MLA Adegoke Fadare

Join your local representatives for an evening of conversation, community, and connection.

Bring your questions, ideas, or just stop by to say hello!

📍 Parkland Clayton Park (118 Fairfax Drive)

📅 Thursday, May 22

🕒 6:30 p.m. – 8:00 p.m.



All are welcome!



HALIFAX

halifax.ca | 311 | contactus@311.halifax.ca



COUNCILLOR JANET STEELE

TIMBERLEA - BEECHVILLE - CLAYTON PARK - WEDGEWOOD

BEECHVILLE, LAKESIDE, TIMBERLEA COMMUNITY CORNER

BLT Community Centre Update

There have been a few issues that have delayed the opening of the new centre until late fall 2025. During excavation, it was discovered that the site contained unsuitable material for building and it took an extra month to remove this material and replace it with proper material.

In addition, there were issues with the supplier for the curtain wall, which required us to redesign the entire glass curtain wall.

The official opening of the centre will depend on when programming can begin. I will be sure to advise when the date has been finalized.

During construction, recreation programs continue to take place at 1300 St. Margaret's Bay Road, neighbourhood schools, and the fire hall. Further information can be found on our [website](#).



It was great to see the progress on the new BLT Community Centre. It is the first time I have seen it from the inside.

Earth Day Fundraiser in Support of BLT Pantry and Bags of Love



There was a steady stream of supporters at the Earth Day Fundraiser in support of the BLT Pantry and Bags of Love at Lily Bee Bazaar on April 26. Thanks to all who supported these worthy causes.

Timberlea Parkway and St. Margaret's Bay Road Traffic Lights

As spring weight restrictions have just been lifted (April 27), the contractor is planning to start the traffic light installation at the Timberlea/St. Margaret's Bay intersection around the end of May. If that changes, I will provide updates in my e-newsletters as they become available.



SATURDAY, JUNE 21 ANNUAL CAR SHOW & SHINE

10:00 a.m. to 2:00 p.m.

Welcome One and All!

Join other car enthusiasts and share your love of vintage, classic, muscle cars and motorcycles and help raise funds for the good works of St. Andrew's Anglican Church.

Registration to show your vehicle is free and admission to view these beautifully maintained vehicles is by donation. We are happy to offer you this opportunity to connect with other car enthusiasts and display your beautifully maintained vehicles with the community or enjoy an afternoon of browsing and talking with car owners.

Contact Tom Pilsent (pilsent.tom@gmail.com) for more information.

Beautifully restored
Vintage, Classic,
Muscle Cars &
Motorcycles

Community BBQ and
lots of Family Fun

Fundraiser for
St. Andrew's Church

Registration to Show
Your Vehicle is FREE

Admission to Event is
by Donation

ST. ANDREW'S CHURCH
2553 St. Margaret's Bay Rd
Timberlea, NS B3T 1H1

June 21, 2025
10:00 am - 2:00 pm



COUNCILLOR JANET STEELE

TIMBERLEA - BEECHVILLE - CLAYTON PARK - WEDGEWOOD

CLAYTON PARK, WEDGEWOOD COMMUNITY CORNER

Friends of Clayton Park AGM

It was fantastic to attend the April 23 AGM and to meet so many engaged youth in our community. The Friends of Clayton Park have their annual summer barbecue scheduled for Sunday, Aug. 17 at Veterans Park with Monday Aug. 18 as the rain date.

Friends of Blue Mountain Birch Cove Lakes Society

Volunteers and supporters were celebrated at the Friends of Blue Mountain Birch Cove Lakes Society meeting on April 27 at beautiful Maskwa Aquatic Club. Friends of Blue



Mountain Birch Cove Lakes is dedicated to creating a wilderness park that all Nova Scotians can enjoy. Mary Ann McGrath, the current board chair, is focused on protecting and shoring up the borders of the park and working with all partners to create a National Urban Park.

Thomas Raddall Shelter Village Update

This site is currently operating at capacity with approximately 40 residents. The Shelter's residents would welcome an opportunity to participate in community social and recreational events. Many residents are searching for local employment and volunteer opportunities, and they would like to let the wider community know they are eager to give back to their community.

In addition to opportunities to get involved with the community, they could benefit from new sock and underwear donations (all sizes and genders) and a basketball net. To reach them, email or call Lauren McLennan, Manager of Community Connections, Atlantic Shelter Society at lmclennan@acsociety.ca or by phone at 902-210-1536.

Belchers Marsh Beaver Concern

Recently, some Clayton Park residents have raised concerns with me about the trees in the Belchers Marsh Park being destroyed by beavers. To follow up on this, I shared residents' concerns with HRM Parks and Recreation. When a wildlife complaint is received, HRM asks our wildlife management contractor to coordinate with the provincial Department of Natural Resources (DNR) and follows their guidance on the appropriate actions for the area. In the case of Belchers Marsh Park, the assessment determined that beavers have contributed to tree loss due to a limited food supply in the area and a permit was issued for the relocation of the beavers. This process is currently underway.

Although the property is under HRM's jurisdiction, we do not proceed with any beaver management activities without advice from DNR.

Ultimately, decisions regarding wildlife relocation are based on information provided by DNR. If DNR advises against relocating a beaver, we follow that recommendation. We rely on DNR as the subject matter experts for these cases, as they have biologists and wildlife specialists who provide guidance on the appropriate course of action. DNR has an established process to assess each situation and recommend solutions, which may, in some cases, include the relocation of wildlife.

Continued on next page →



COUNCILLOR JANET STEELE

TIMBERLEA - BEECHVILLE - CLAYTON PARK - WEDGEWOOD

Halifax Northwest Trails Association (HNWTA) Belcher's Marsh Clean Up



On April 26, the HNWTA hosted a successful Belchers Marsh Clean up with more than two dozen volunteers. Approximately 350 pounds of garbage was collected, including four car tires and a large mattress. Thanks to all who came out to support our community.

Seniors Recreation Services Plan Public Engagement

The Halifax Regional Municipality is inviting residents to provide feedback on recreation programming for seniors 60 years and older.


Residents are encouraged to complete the survey or attend one of the upcoming public engagement sessions listed on our [website](#). The survey will remain open until Wednesday, June 4.

The engagement session for District 12 will be held on Thursday May 22, 1:30 – 4:30 p.m. at Keshen Goodman Library.

Parks & Recreation is in the process of developing a Seniors Recreation Services plan. This project is aimed at shaping the municipality's recreation programs and services for seniors over the next five years. Seniors' groups and individuals will be actively involved in creating this plan – and a Seniors' Recreation Advisory Group has been established to provide leadership and support to staff during the planning process.

For more information, visit [our website](#).



 SAT MAY 31 2025
10:00 AM - 2 PM
ADMISSION IS FREE!

We welcome you to join us on Saturday, May 31 from 10 am - 2 pm at the Canada Games Centre as we host the Community Wellbeing Expo.

Community members one-stop-shop for upcoming events and activities, community mobilization information, volunteer opportunities and more!

If you are interested in setting up a table, please contact Cara at Cara.Sunderland@nshealth.ca by Friday, May 9. Spaces are limited.

Brought To You By



Monday May 26th | 8:00 am - 9:00 am
Registration opens May

HALIFAX

halifax.ca | 311 | contactus@311.halifax.ca



COUNCILLOR JANET STEELE

TIMBERLEA - BEECHVILLE - CLAYTON PARK - WEDGEWOOD

MARKETING LEVY SPECIAL EVENT RESERVE GRANTS

Applications are now open for the [Marketing Levy Special Event Reserve Grants](#), offering support for non-profit organizations to host large-scale events in the Halifax region.

These grants help bring exciting new events to our community, while promoting tourism and boosting local business activity.

Two grant programs are available:

- **Distinguished Events Program:** Designed for large-scale, one-time events with national or international appeal. Events must attract multi-day visitors and have a minimum budget of \$50,000.
- **New Events (Emerging) Program:** Supports organizations creating or bringing a new event to the municipality that fills a gap in the current event calendar. These events should also aim to grow into annual tourism attractions, with a minimum budget of \$50,000 and proven event management experience.

These grants are funded through the municipality's hotel tax and help grow our local economy by supporting high-impact events.

The deadline to apply is Friday, May 30.



Congratulations to the 2025 District 12 Volunteer Award recipients Daniel Yun, Efua Inkoom, Barb Charteris, Paula Blackmore, Layla Hussain and Malaka Habib. Thank you for your dedication and commitment to our community.

COUNCILLOR SLOW DOWN SIGNS

If you are interested in a slow down sign for your lawn/personal property, please email me at janet.steele@halifax.ca. These signs are made of plastic and come with the lawn stakes for installation.

Please be informed that the District 12 "Please Drive Slowly" signs are NOT a traffic calming measure, and they have no authority to direct or slow down traffic, or make children safer on the streets.



I had the pleasure of attending the Nova Scotia Nature Trust Gala on April 16.



HALIFAX

halifax.ca | 311 | contactus@311.halifax.ca



COUNCILLOR JANET STEELE

TIMBERLEA - BEECHVILLE - CLAYTON PARK - WEDGEWOOD

SECOND UNIT INCENTIVE PROGRAM

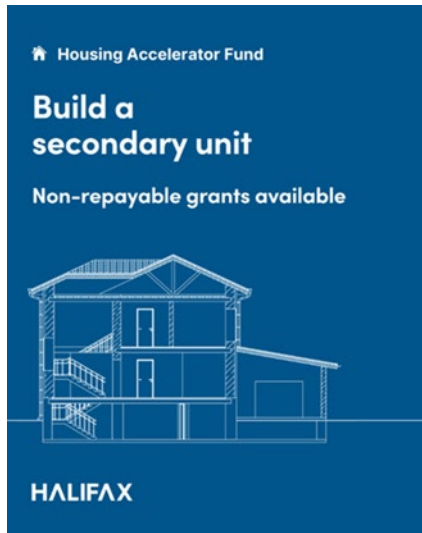
HRM, with help from funding from the federal government's Housing Accelerator Fund, has introduced a new grant program to help property owners create more housing options.

The Second Unit Incentive

Program offers financial grants to help offset costs associated with building new secondary units.

Eligible residents can receive up to \$12,000 to help reduce building expenses related to water and wastewater.

Applications will be open until June 1, 2026, or until funding is fully allocated. More information on how to apply can be found on HRM's [website](#).



Fairview Food Pantry Fundraiser

FREE WILDFIRE RISK ASSESSMENT FROM FIRESMART

Wildfires are becoming more frequent and severe, especially in areas where homes meet natural vegetation. To help reduce this risk, Halifax Regional Fire & Emergency is offering free, voluntary FireSmart property assessments to residents.

As part of this service, trained staff will visit your home, identify potential wildfire hazards—like flammable materials or overgrown vegetation—and provide personalized tips to help you make your property safer.

Request your free assessment [here](#) or call 311 to learn more. Taking action now can make a big difference in protecting your home.



This Hour Has 22 Minutes with the Mayor and Council Colleagues

HALIFAX

halifax.ca | 311 | contactus@311.halifax.ca



COUNCILLOR JANET STEELE

TIMBERLEA - BEECHVILLE - CLAYTON PARK - WEDGEWOOD

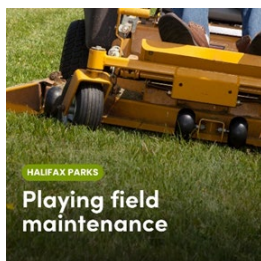
SHAPE YOUR CITY

The [Shape Your City online hub](#) complements traditional consultation activities led or facilitated by the municipality like open houses and town halls. Public engagement is a vital component of every project undertaken by the Halifax Regional Municipality. Shape Your City makes engagement programs like these more inclusive and accessible and makes it easier for you to share your opinions through tools like discussion forums, quick polls and surveys.

[Shape Your City](#) makes it easy to share your input from the comfort of your home on a range of municipal initiatives and projects. All active online engagements are currently listed here: [Welcome to Shape Your City | Shape Your City Halifax](#)

PLAYING FIELD MAINTENANCE UNDERWAY

Parks staff have begun seasonal maintenance of playing fields. We maintain over 300 fields and ball diamonds throughout the municipality for residents to use and enjoy. For more information, click [here](#).



CLEARING STORM DRAINS, CATCHBASINS AND HYDRANTS

Halifax Water is encouraging residents to check their storm drains/catch basins to ensure they are clear. If you see they are blocked by snow, we ask that customers clear them if they are able, and it is safe to do so.



Rockingham Heritage Society Annual Luncheon and Keynote

DISTRICT 12 2025/26 PARKS CAPITAL PROJECTS

Below is a list of the approved planned parks capital projects for 25/26 in District 12.

Outdoor Recreation 2025/26 Capital

Mainland Common Westridge Ball Diamond - Ball Diamond rehabilitation

Mainland Common All Weathers Fields #1 & #2 - lighting rehabilitation

Outdoor Recreation Carry Forward Capital

Recreational Trail Grant - Halifax Northwest Trails Association

Blue Mountain-Birch Cove Lakes Regional Park - Julius Blvd. Park trailhead parking lot (design)

Beechville Lakeside Timberlea Recreation Park - new splash pad

Munroe Park - walkway rehabilitation (integrated with Public Works improvements)



COUNCILLOR JANET STEELE

TIMBERLEA - BEECHVILLE - CLAYTON PARK - WEDGEWOOD

MUNICIPALITY SETS 2026-2030 STRATEGIC PLANNING PROCESS

The municipality's administration has started creating the 2026-2030 Strategic Plan and Regional Council has approved the proposed approach in finalizing the Plan.

The Strategic Plan reflects the municipality's vision, mission and values – and establishes key areas of focus now and into the future. The four-year plan outlines priorities and goals, which guide how the municipality tracks progress and aligns business plans and budgets. The plan also helps municipal employees understand how their work fits into the long-term goals of the organization, and how they can work together to make a difference in the region.

The draft Plan content has been informed by the results of the [2024 Resident Survey](#) and workshops with Regional Council and the administration's senior leadership.

Beginning in May, Regional Council will review the draft plan. This feedback will then inform a subsequent round of working group meetings and plan development in advance of the final Plan being presented to Regional Council in summer 2025.

For more information, read the staff report [here](#).

DISTRICT 12 2025/26 PLANNED CAPITAL WORK

I am resharing the list of planned capital work for this season as the budget has now been approved and this is a common question from residents.

Below you will find a list of the planned capital work for 2025/26 in District 12.

Street Recapitalization

Balsam St. – Oliver to Hamilton (Carryover)

Hamilton St. – Oliver to Balsam (Carryover)

Merganser Ave. – Grebe to End (Integrated Traffic Calming)

Oliver St. – St. Margaret's to End (Carryover)

Asphalt Overlays

Regency Park Dr. – Lacewood to End (Integrated Traffic Calming)

New Sidewalks

St. Margaret's Bay Rd. – Lakeside Park to Transit Stop 6164 (Carryover)

Walkways

Regency Park Dr. to 283 Thomas Raddall Dr.

Traffic Management Projects

Traffic Calming

- Langbrae Dr.

New Traffic Signals

- St. Margaret's Bay Rd. at Timberlea Village Parkway (carry-over from 2024)

Planer Patching

St. Margaret's Bay Rd – Timberlea Village Parkway to Beech Tree



Celebrating McHappy Day at 201 Chain Lake Drive



COUNCILLOR JANET STEELE

TIMBERLEA - BEECHVILLE - CLAYTON PARK - WEDGEWOOD

311 MUNICIPAL SERVICES AND INFORMATION

For routine municipal matters such as reporting potholes, requesting traffic calming assessments, garbage collection and much more, please call 311 or email contactus@311.halifax.ca. Please feel free to copy me on your email if this is not a routine matter.

When you call 311, your request is logged and tracked to ensure follow up and action by the appropriate department. Please be sure to advise the agent if you would like to receive a follow up from staff regarding your service request.

For more information about how to get in touch, please visit our [website](#).

ON-STREET PARKING

I have been receiving many phone calls and emails related to on-street parking complaints. Here are a few common parking restrictions to remember:

- **Blocked Driveways:** Please ensure you're not blocking anyone's driveway. It's a common frustration and can cause significant inconvenience.
- **Time Limits:** Unless signs indicate a shorter limit, on-street parking is limited to 24 hours. Commercial vehicles are limited to 2 hours.
- **Curb Distance:** Park no more than 150 mm (approximately 6 inches) from the curb. This includes avoiding parking in the middle of cul-de-sacs.
- **Direction of Parking:** Always park in the direction of traffic flow. Parking facing the wrong way is both illegal and unsafe.
- **Fire Hydrants:** Never park within 5 metres (approximately 16 feet) of a fire hydrant. Clear access is crucial for emergency services.

- **Intersections/Stop Signs:** Do not park too close to intersections or stop signs. This obstructs visibility and creates safety hazards.

Your cooperation helps maintain clear and safe streets for all residents. If you observe parking infractions, please report them by calling 311 or emailing contactus@311.halifax.ca

For more information on parking in HRM, visit our [website](#).



DISTRICT CAPITAL FUND

Each councillor has a small fund that can be used to support non-profits to undertake activities that will benefit the community. To apply, we require a letter of request, including the name and address of the non-profit group, and explanation of how the funds will be used and a completed [Capital Request Form](#)





COUNCILLOR JANET STEELE

TIMBERLEA - BEECHVILLE - CLAYTON PARK - WEDGEWOOD

REGIONAL COUNCIL MEETINGS

There are two Regional Council meetings scheduled for May. Regional Council meetings are held on Tuesdays:

- May 13
- May 27

Check out the full schedule of upcoming meetings – including committees [here](#). Meeting agendas (including the specific start time of 10 a.m. or 1 p.m.) and a link to watch the video are generally available by the Friday prior to the meeting. Reports on the items that councillors vote on are available and are linked throughout the meeting agenda.

COMMUNITY COUNCIL SCHEDULE AND AGENDA

The Halifax and West Community Council normally meets once a month on Tuesdays at 6 p.m. in Council Chambers. Meeting dates, time and location are subject to change. You can find agendas, report, and minutes [online](#).

Stay tuned for the video link to be shared closer to the next Halifax and West meeting, scheduled for May 20.

Currently serving on:

Environment and Sustainability Standing Committee

Community Planning and Economic Development Standing Committee

Appeals Standing Committee

Halifax and West Community Council

Halifax Water Board of Commissioners

Canada Games Centre Board of Directors

Otter Lake Community Monitoring Committee

LAND ACKNOWLEDGEMENT

Halifax is committed to strengthening its relationship with Indigenous communities and honouring the significant contributions of Indigenous peoples. Another way the municipality has demonstrated this is by formalizing the official Land Acknowledgement.

In Nova Scotia, we are all Treaty People; with that comes roles and responsibilities.

Land Acknowledgement

The Halifax Regional Municipality is located in Mi'kma'ki, the ancestral and traditional lands of the Mi'kmaq people. The municipality acknowledges the Peace and Friendship Treaties signed in this Territory and recognizes that we are all Treaty People.

AFRICAN NOVA SCOTIAN LAND ACKNOWLEDGEMENT

The Halifax Regional Municipality recognizes that African Nova Scotians are a distinct founding people in Nova Scotia who have been a key part of the province's culture and history.



COUNCILLOR JANET STEELE
DISTRICT 12
TIMBERLEA-BEECHVILLE-CLAYTON
PARK-WEDGEWOOD
(902)-471-3123
Janet.Steele@halifax.ca
PO BOX 1749
HALIFAX, NS B3J 3A5
www.halifax.ca