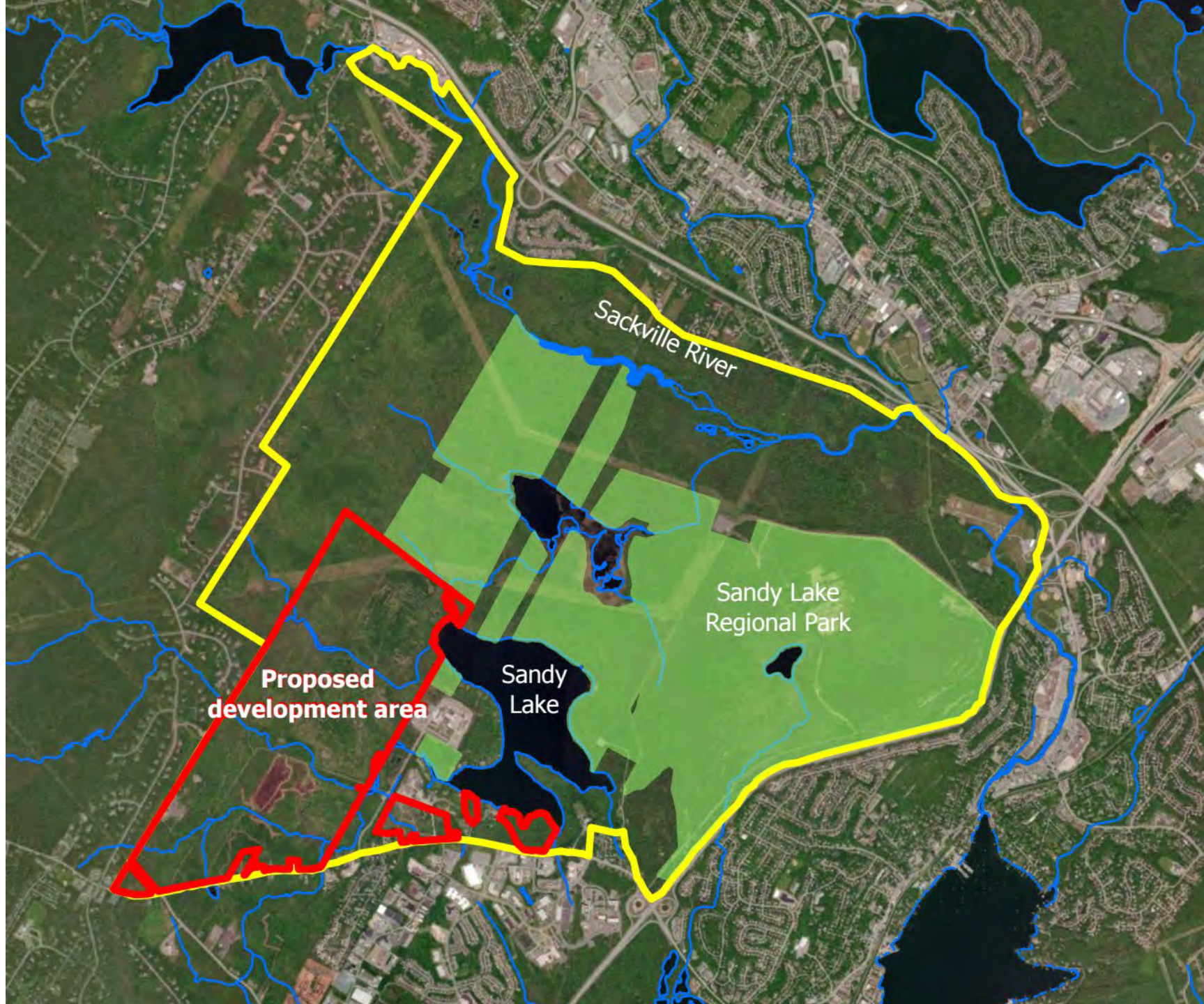


An aerial photograph of a large, dark blue lake surrounded by a dense forest. The trees show vibrant autumn colors, including yellows, oranges, and reds, contrasting with the deep blue of the water. The lake is nestled between rolling hills and forested land.

Item 10.3.2

Sandy Lake – Sackville River Regional Park Coalition update

Presented by Karen McKendry,
Ecology Action Centre, part of the
Sandy Lake – Sackville River Regional Park Coalition



Sackville River

Sandy Lake
Regional Park

**Proposed
development area**

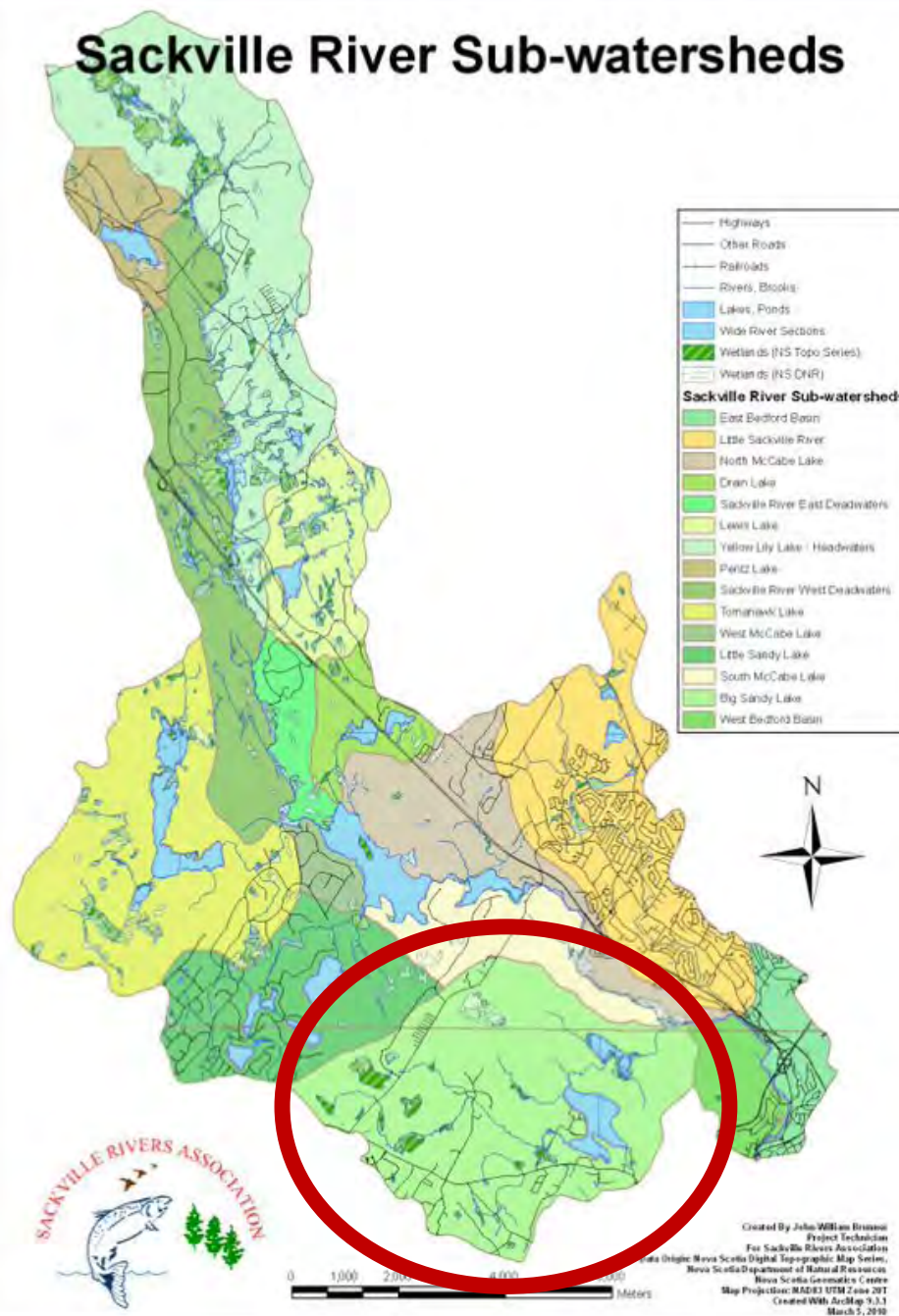
Sandy
Lake

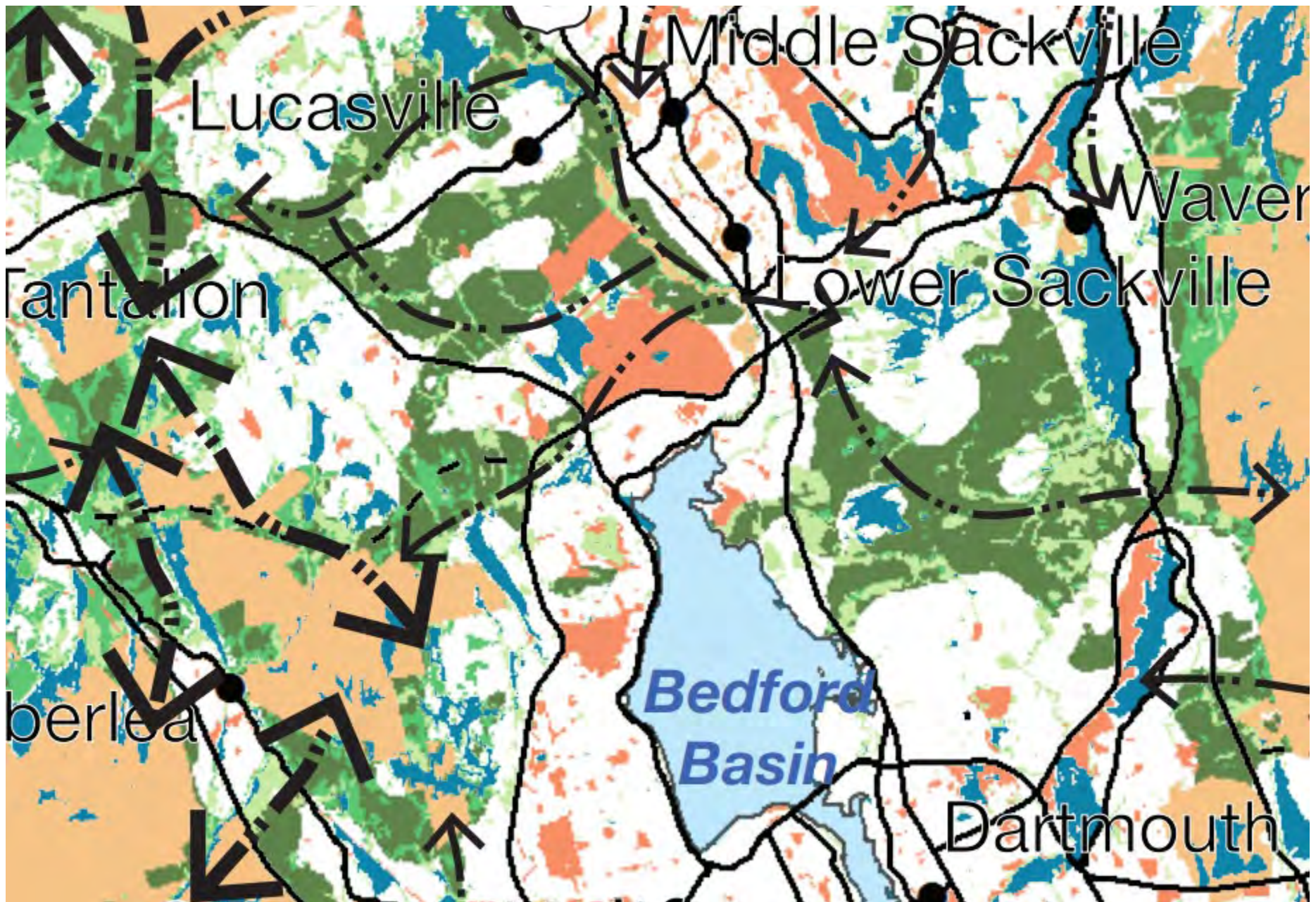






Sackville River Sub-watersheds



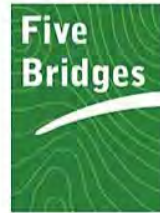




Sandy Lake Conservation Association
 sandylake.org sandylakecoalition.ca



**LUCASVILLE
GREENWAY SOCIETY**
 Icons of a person walking, a person on a bicycle, and a person running.



**Wilderness
Heritage
Trust**



**Friends of
BLUE MOUNTAIN -
BIRCH COVE LAKES**



**AGROPUR
Dairy Cooperative**



**NOVA SCOTIA
BIRD SOCIETY**



THE ST. MARGARET'S BAY STEWARDSHIP ASSOCIATION



**FRIENDS OF NATURE
CONSERVATION SOCIETY**



A NEW VISION OF AGING FOR CANADA



**Nova Scotia
Wild Flora
Society**



**Ecology
Action
Centre**



**CAPE
Canadian Association
of Physicians
for the Environment
Association Canadienne
des Médecins
pour l'Environnement
ACME**



“To preserve and protect over 2,800 acres of wildlife and aquatic habitat surrounding the Sandy Lake - Sackville River for historical, cultural, nature conservation, educational, and recreational uses.”





The Heart of the Area

Sandy Lake – Sackville River Regional Park Planning context



Future Service Communities



Last Updated: August 8, 2024

The [Regional Plan Review](#) has identified the need for additional serviced lands to accommodate population growth. With [provincial funding support](#), the municipality is conducting a series of technical studies to inform decisions about potential serviced development in four study areas. Stantec has been awarded the contract to conduct the Future Serviced Communities Studies through

a request for proposals process. The four locations being studied are:

- Lands to the west of Sandy Lake in Bedford;
- Highway 102 West Corridor lands in Halifax;
- Lands southeast of Morris Lake in Dartmouth and Cole Harbour; and
- Lands including and immediately surrounding the former Nova Scotia Home for Colored Children (now owned by Akoma Holdings) in Westphal.

Project Status

Stantec has made significant progress on the study's environmental, servicing, and transportation study components. Fieldwork and stakeholder consultations are now complete and drafts of study components are being provided to the Municipality for technical review. The draft land suitability analyses (LSAs) are being

Who's Listening

Stephanie Salloum

Principal Planner, Planned Growth
Halifax Regional Municipality

Email sallous@halifax.ca

SS

Ben Sivak

Manager, Planned Growth
Halifax Regional Municipality

Email sivakb@halifax.ca

BS

FAQs

[Why were these study areas chosen?](#)

[What is a Special Planning Area?](#)

[How will the studies be used?](#)

[How can I get involved?](#)

Anytime now: Final reports on 4 Future Serviced Communities, incl. Sandy Lake

- Background studies on the environment
- Staff will present to HRM Council, but also the Task Force
- Task Force/ Minister will decide to advance development

[Take Action](#)

Sandy Lake - Sackville River Regional Park Coalition

Let's resolve unfinished business by finally protecting
Sandy Lake and Sackville River



An aerial photograph of a large, dark blue lake, likely Sandy Lake, surrounded by dense forests. The trees show vibrant autumn colors of yellow, orange, and red, contrasting with the deep blue of the water. The lake is nestled between rolling hills, and the overall scene is peaceful and scenic.

Thank you

Presented by Karen McKendry,
Ecology Action Centre, part of the
Sandy Lake – Sackville River Regional Park Coalition