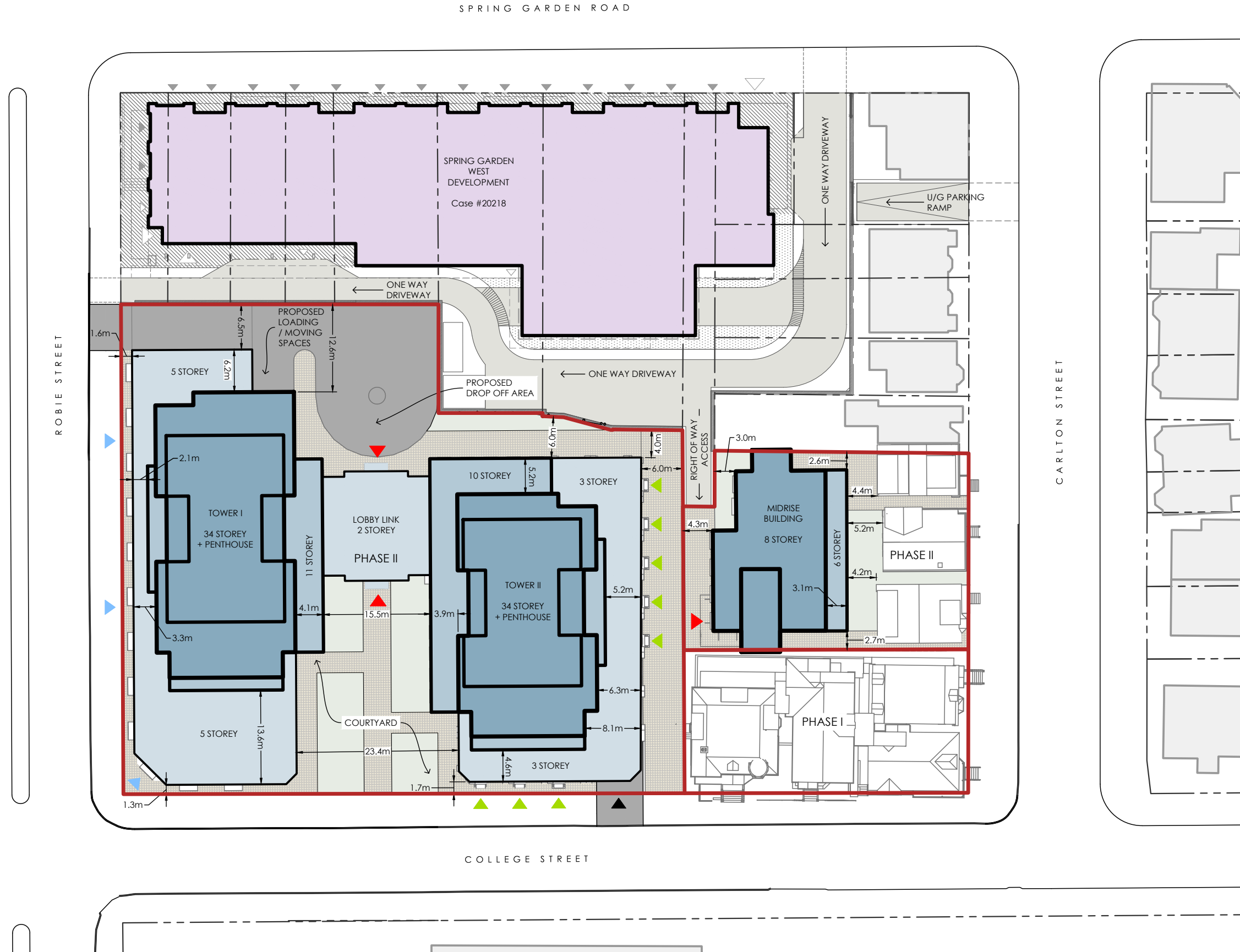


FILE: C:\Users\Ken\Zwickler\Projects - 2023\Projects\23-104 Promenade Phase 1\4_Planning\1-DWG\23-104-SITE_PLAN.dwg SHEET: OVERALL



LEGEND

- SITE BOUNDARY
- - - ADJACENT PROPERTY BOUNDARY
- ▶ COMMERCIAL ENTRANCE
- ▼ RESIDENTIAL ENTRANCE
- ▲ U/G PARKING ENTRANCE
- ▶ GRADE RELATED UNITS

SITE SUMMARY:

- PHASE I 0.09 Ha / 0.22 ACRES
- PHASE II 0.62 Ha / 1.53 ACRES
- LAND AREA: 0.71 Ha / 1.75 ACRES

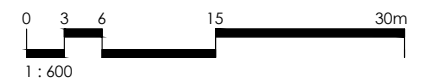
NOTES:

- SUBJECT TO SURVEY.
- PROPERTY LINES AND TOPOGRAPHIC FEATURES ARE APPROXIMATE ONLY.

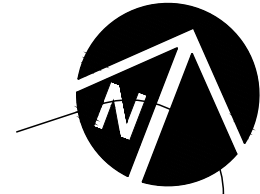
SOURCES:

- SITE PLAN BASED ON SURVEY CAD FILE: '3808 TOPO OUT NAD83.DWG'
- ADJACENT PROPERTY LINES AND TOPOGRAPHIC FEATURES ARE PROVINCIAL MAPPING.

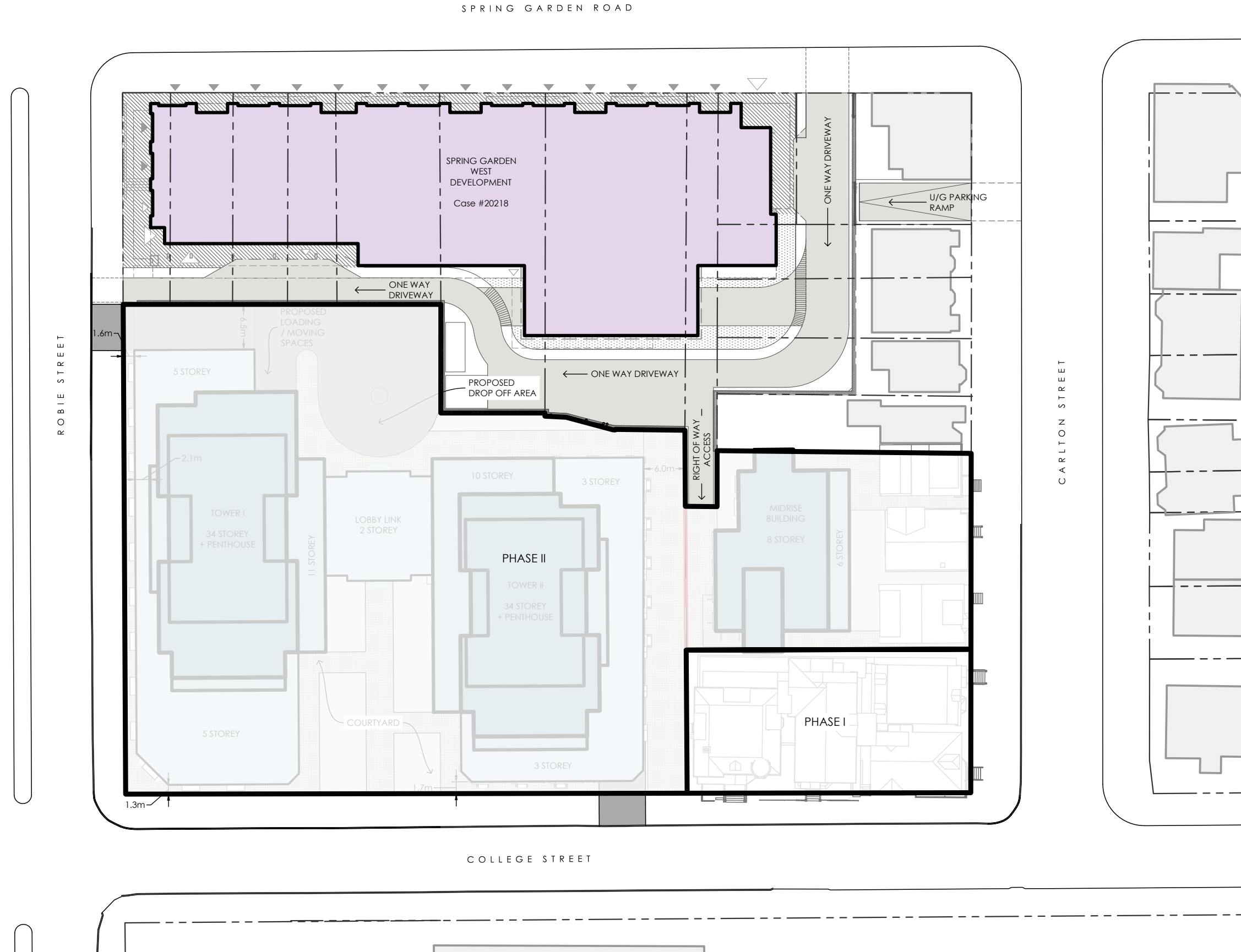
SCALE



**DRAFT - FOR REVIEW ONLY
DECEMBER 03, 2024**



FILE: C:\Users\Ken\Zwickler\Zoreski Architecture & Planning\Projects - 2023\Projects\23-104 Promenade Phase 1\4_Planning\1-DWG\23-104-SITE_PLAN.dwg SHEET: OVERALL PHASING



LEGEND

- SITE BOUNDARY
- - - - - ADJACENT PROPERTY BOUNDARY

SITE SUMMARY:

- PHASE I 0.09 Ha / 0.22 ACRES
- PHASE II 0.62 Ha / 1.53 ACRES
- LAND AREA: 0.71 Ha / 1.75 ACRES

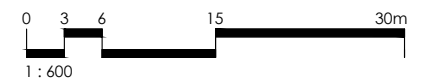
NOTES:

- SUBJECT TO SURVEY.
- PROPERTY LINES AND TOPOGRAPHIC FEATURES ARE APPROXIMATE ONLY.

SOURCES:

- SITE PLAN BASED ON SURVEY CAD FILE: '3808 TOPO OUT NAD83.DWG'
- ADJACENT PROPERTY LINES AND TOPOGRAPHIC FEATURES ARE PROVINCIAL MAPPING.

SCALE



**DRAFT - FOR REVIEW ONLY
DECEMBER 03, 2024**