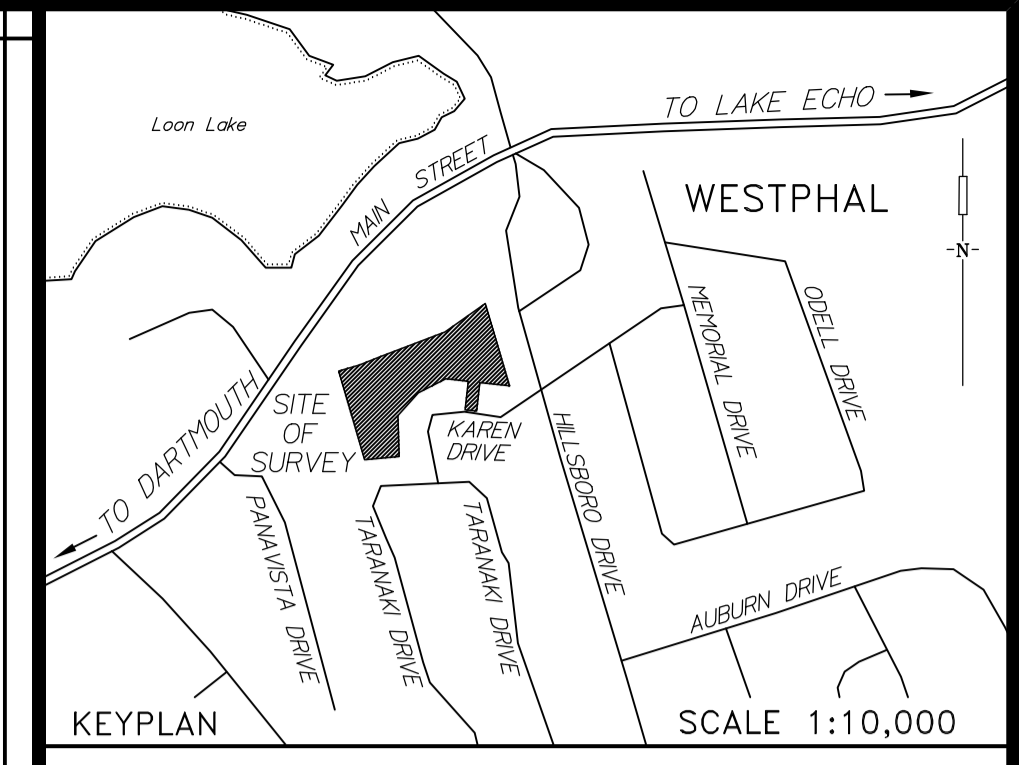
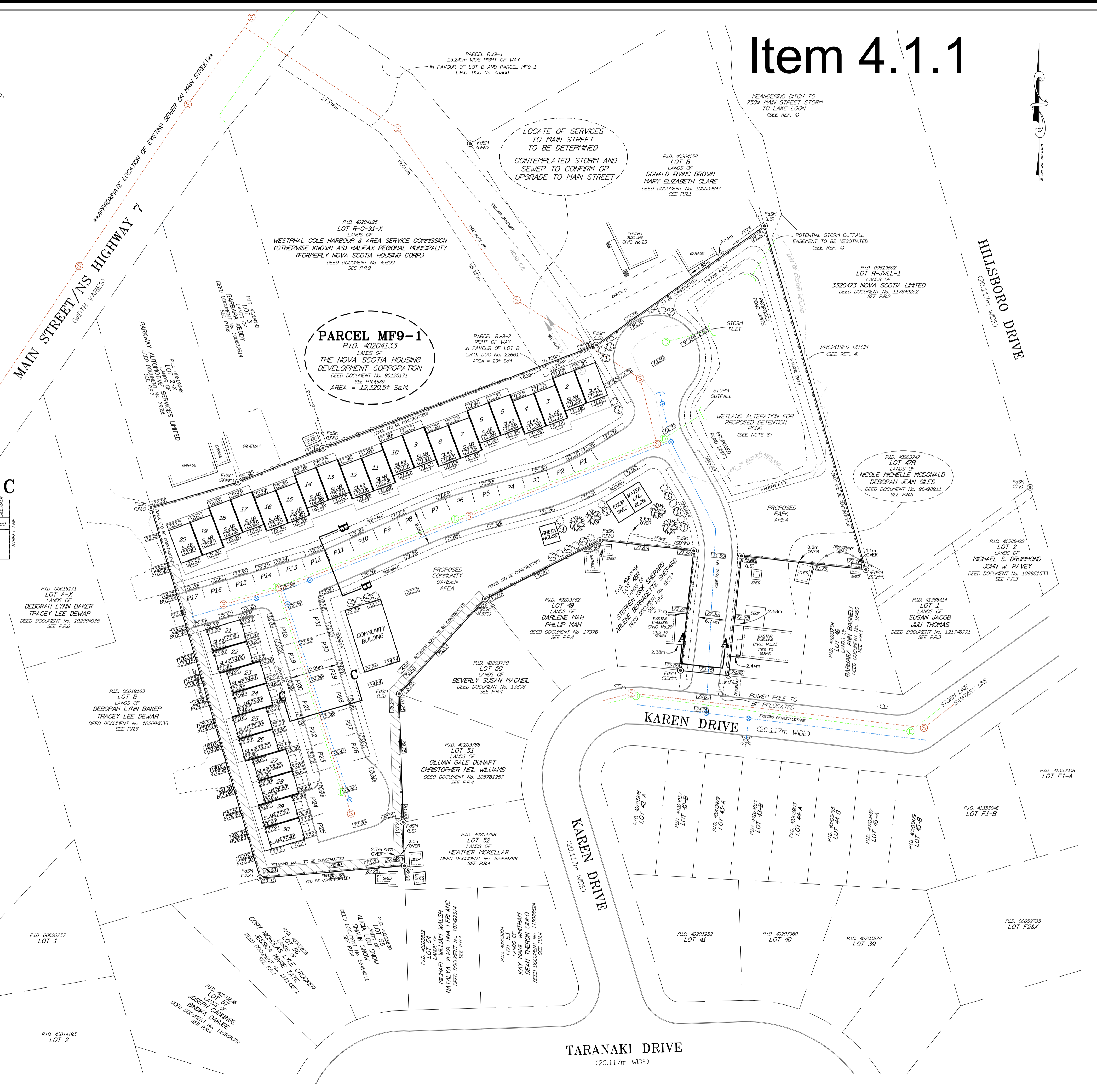
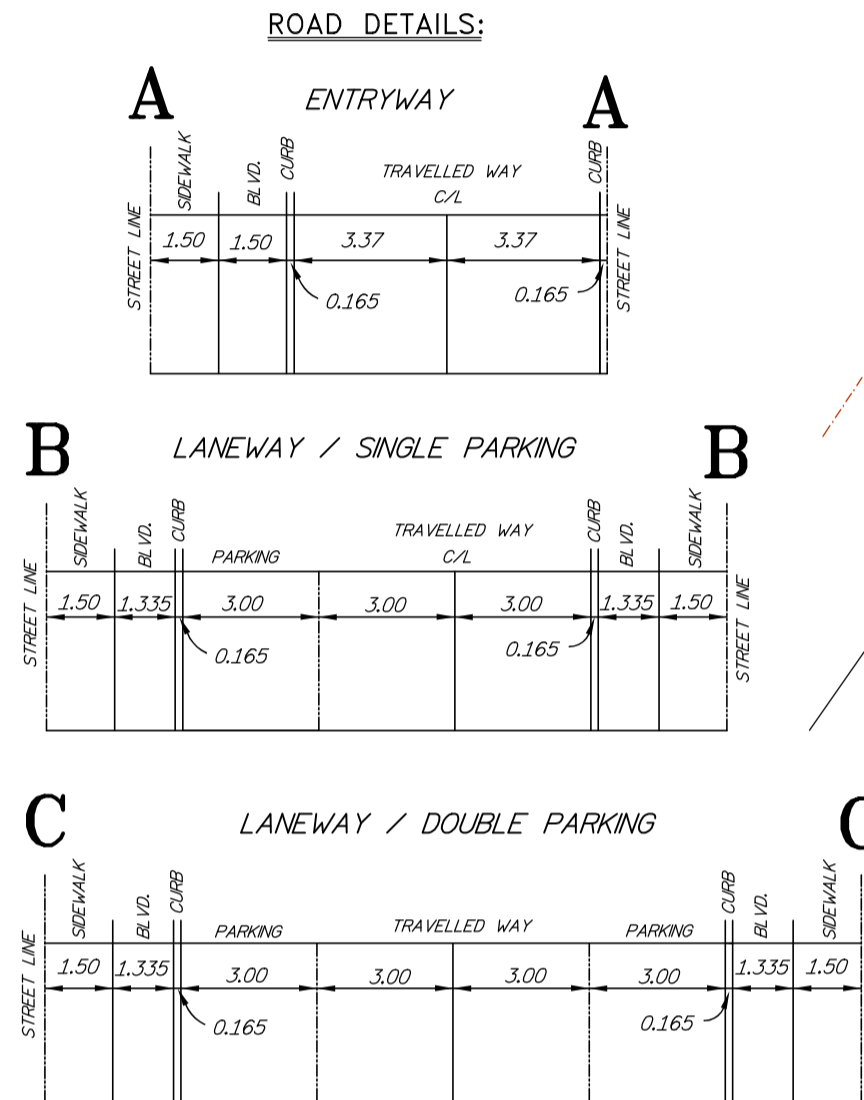


- PLAN REFERENCES:**
- PLAN SHOWING SUBDIVISION OF LANDS OWNED BY JOHN GORDON BELL, AT WESTPHAL, HALIFAX COUNTY, SIGNED BY L. R. FEETHAM, P.L.S., DATED JULY 6, 1967, AND REGISTERED AS PLAN NUMBER 8377.
 - PLAN OF SURVEY OF LOT 15, BEING A SUBDIVISION OF LOT R-JML-1, LANDS OF HILLSBORO HOLDINGS INC. SIGNED BY THOMAS F. GIOVANNETTI, N.S.L.S., DATED FEBRUARY 22, 2018, AND REGISTERED AS PLAN NUMBER 112623567.
 - PLAN OF SURVEY OF LOT 1, LOT 2, LOT 3, & LOT 4, BEING A SUBDIVISION OF LOT JML-1 (PID 0819922) AND REMAINDER LOT R-JML-2 (PID 40720153), LANDS CONVEYED TO J. WALTER LAHEY LTD., SIGNED BY THOMAS F. GIOVANNETTI, N.S.L.S., DATED FEBRUARY 14, 2014, AND REGISTERED AS PLAN NUMBER 103523667.
 - PLAN SHOWING SUBDIVISION, PHASE 9, FOREST HILLS LAND ASSEMBLY, THE NOVA SCOTIA HOUSING COMMISSION (REVISED), SIGNED BY FRANK LONGSTAFF, N.S.L.S., DATED FEBRUARY 10, 1977, AND REGISTERED AS PLAN NUMBER 18969.
 - PLAN SHOWING SUBDIVISION, PHASE 9, FOREST HILLS LAND ASSEMBLY, THE NOVA SCOTIA HOUSING COMMISSION (REVISED), SIGNED BY FRANK LONGSTAFF, N.S.L.S., DATED MAY 6, 1982, AND REGISTERED AS PLAN NUMBER 20125.
 - SUBDIVISION PLAN SHOWING A PORTION OF THE ESTATE OF THOMAS BELL, SIGNED BY H. K. REDLOCK, P.L.S., DATED APRIL 16, 1960, AND REGISTERED AS PLAN NUMBER 4807.
 - PLAN SHOWING SUBDIVISION OF LANDS OWNED BY MR. JOHN G. BELL, AT WESTPHAL, HALIFAX COUNTY, SIGNED BY L. R. FEETHAM, P.L.S., DATED OCTOBER 26, 1963, AND REGISTERED AS PLAN NUMBER 7657.
 - PLAN SHOWING SUBDIVISION OF LANDS OWNED BY JOHN GORDON BELL, AT WESTPHAL, HALIFAX COUNTY, SIGNED BY L. R. FEETHAM, P.L.S., DATED JULY 6, 1967, AND REGISTERED AS PLAN NUMBER 8378.
 - PLAN SHOWING SUBDIVISION, PHASE 9, FOREST HILLS LAND ASSEMBLY, THE NOVA SCOTIA HOUSING COMMISSION, SIGNED BY FRANK LONGSTAFF, N.S.L.S., DATED NOVEMBER 3, 1976, AND REGISTERED AS PLAN NUMBER 18204.

Item 4.1.1



- NOTES:**
- CONCEPT PLAN TO BE USED FOR INITIAL HRY DISCUSSIONS ONLY
 - FINAL DESIGN TO BE A REFLECTION OF THE INTENDED DEVELOPMENT PERMIT PROCESS
 - BUILDING FOOTPRINT ONLY SHOWS FINAL GRADE OF FOUNDATION STEPPED UP ON FINAL GRADES
 - ARCHITECTURAL AND LANDSCAPE SITE ELEMENTS TO BE DETERMINED BASED ON FINAL GRADES
 - ALL ELEVATIONS ARE CGVD2013
 - CONTOUR INTERVALS AT 0.25m
 - TRANSVERSE LOCATE REQUIRED FOR PIPE LOCATION TOWARDS MAIN STREET. STORM AND SEWER MANHOLES TO BE CONFIRMED
 - POST-FLOWS TO EQUAL PRE-FLOWS, ACCOMMODATED BY THE RETENTION/DETENTION POND
 - THE SURVEY WAS EXECUTED DURING THE PERIOD OF JULY 25, 2023 TO OCTOBER 2, 2023.
 - DISTANCES SHOWN ON THIS PLAN ARE GRID DISTANCES AS DERIVED FROM GNSS OBSERVATIONS
 - 1200 YEAR FLOOD LIMITS OF ANY AREA PRONE TO FLOODING CAN NOT BE MADE UNDER THE CERTIFICATION OR SEAL OF A NS LAND SURVEYOR AS IT IS CONSIDERED TO BE PROFESSIONAL ENGINEERING.
 - OCCUPATION PREScriptive RIGHTS UNKNOWN
 - UTILITY LOCATIONS SHOWN ARE PROPOSED ONLY. WATER MAIN TO BE 200mm, STORM AND SANITARY SEWER TO BE 300mm IN DEVELOPMENT PROCESS.
 - POWER SERVICE LOCATION TO BE DETERMINED
 - ALL UTILITY SERVICE SIZES SUBJECT TO CAPACITY REVIEW.
 - WATER, SEWER AND STORM SERVICES WILL BE SHOWN PENDING APPLICABLE CAPACITY STUDIES.

- REFERENCES:**
- CPWC PARKING AREAS ADVISORY DOCUMENT, ISBN 0-660-10199-8
 - HALIFAX REGIONAL MUNICIPALITY PUBLIC WORKS AND TRANSPORTATION SERVICES - DESIGN GUIDELINES
 - HALIFAX REGIONAL MUNICIPALITY WATER COMMISSION - DESIGN SPECIFICATIONS - DRAWING HWSD-140
 - SITE PLAN FOR TOPSOIL REMOVAL - CIVTECH ENGINEERING - JUNE 11, 2022

LEGEND:

LANDS DEALT WITH BY THIS SURVEY	OTHER LANDS
NOVA SCOTIA HIGH PRECISION MONUMENT	NSHP.M
SURVEY MARKER	S.M.
CONCRETE NAIL	C.N.
FOUND	F.
PLAN REFERENCE	P.R.
PROPERTY IDENTIFICATION NUMBER	P.I.D.
NOT TO SCALE	N.T.S.
UNKNOWN	U.N.K.
SERVANT DUMBRACK HACKENZIE & MACDONALD LTD.	CS2910
CIVTECH ENGINEERING AND SURVEYING LTD.	COV0
FRANK LONGSTAFF, N.S.L.S.	(L.S.)
FRED HUTCHINSON, N.S.L.S.	(S78)
PROPERTY ONLINE	P.O.L.
BUILDING	B.
WATER VALVE, HYDRANT	W.V.
UTILITY POLE	U.P.
NOVA SCOTIA LAND SURVEYOR	N.S.L.S.
SEWER MAN	S.M.
STORM MAN	S.M.
WATER MAN	W.M.
LANDSCAPING AREA	L.A.
STORM MANHOLE, SEWER MANHOLE	S.M.
TREE, SHRUBS	T.S.

GNSS SURVEY TYPE:	NRTK	SOURCE:	CarNet
COORDINATE SYSTEM INFORMATION			
HORIZONTAL DATUM:	NAD83 (CSRS)	EPOCH:	2010.0
VERTICAL DATUM:	CGVD2013	CALCULATED OFFSET BETWEEN CGVD28/CGVD2013	0.589m
M.T.M. ZONE 5 CENTRAL MERIDIAN 64° 30'			
COMBINED SCALE FACTOR AT THE SITE OF SURVEY: 0.999967			

CONCEPT SCHEMATIC FOR ARCHITECTURAL BUILDING DESIGN & GRADING LANDS CONVEYED TO THE NOVA SCOTIA HOUSING DEVELOPMENT CORPORATION KAREN DRIVE, WESTPHAL HALIFAX REGIONAL MUNICIPALITY, NOVA SCOTIA

DATED THIS 16th DAY OF OCTOBER, 2024

CIVTECH ENGINEERING & SURVEYING LIMITED
P.O. Box 3237, D.E.P.S., DARTMOUTH
NOVA SCOTIA, B2W 5G2, 434-4600

GRAPHIC SCALE
1 : 500

No.	REVISION/REMARKS	DATE	SCALE:
1	BUILDING LOCATION ADJUSTMENT	MAY 31, 2024	1:500

DRAWN BY: K. SHEFFER | CHECKED BY: T. GIOVANNETTI | 23192CON4