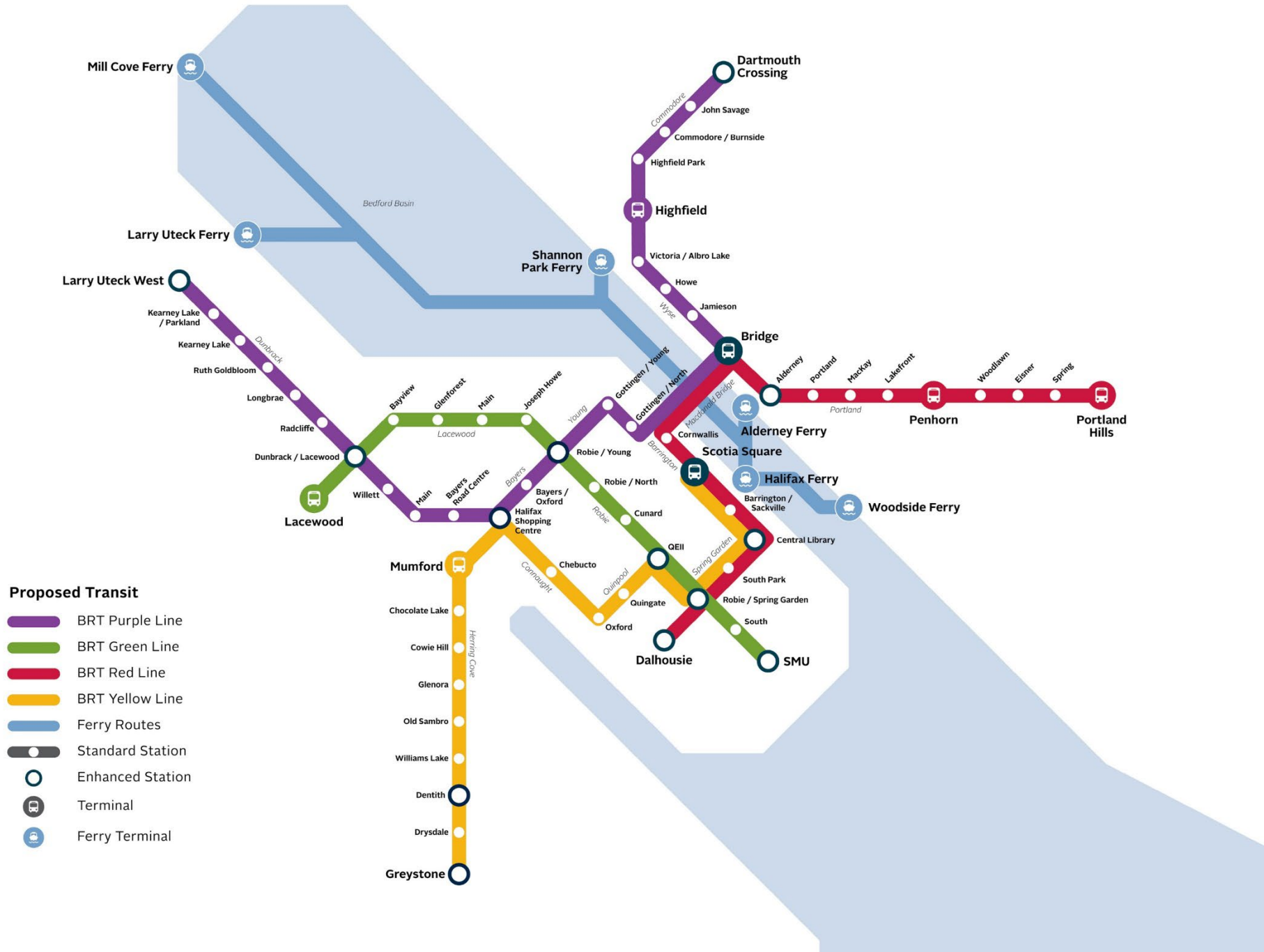


HALIFAX
TRANSIT

Halifax Transit Presentation

Date: Sept 23, 2024





Mill Cove Ferry Service Project

Project Objectives - the Why?

1

Unprecedented population growth;
reduce congestion on main transportation corridors

2

Implement HRM's Rapid Transit Strategy;
reduce reliance on personal vehicles

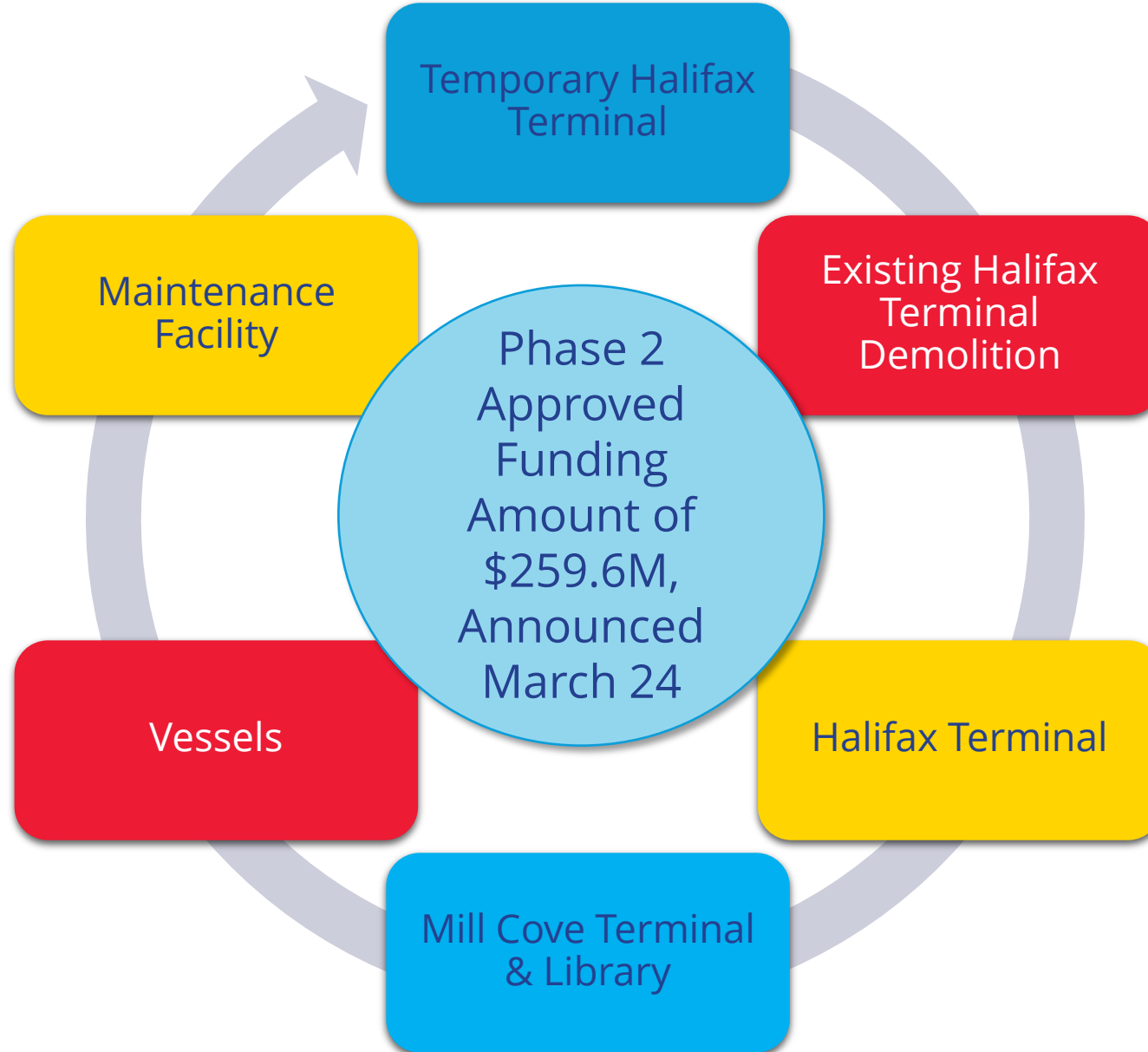
3

Decarbonize HRM's transit system;
achieve a Net-zero economy by 2050

4

Increase climate change resiliency;
Protect HRM's infrastructure and transportation network

Phase 2



Vessel Statement of Requirements



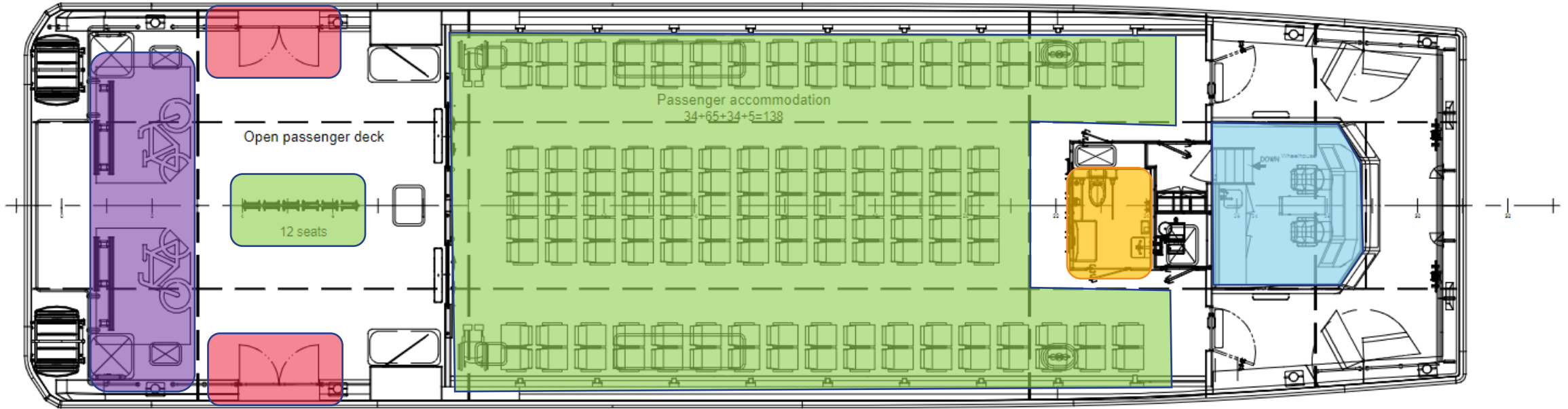
- battery electric propulsion requiring no more than 3 MW of charging power
- capacity for 150 passengers
- complete a round trip on 1 charge
- universally accessible main deck
- space for mobility devices
- protected space for 16 bicycles
- wake shall be no larger than wake from current ferries
- vessels to be completely interchangeable
- overall length less than 32 m
- vessel service life of 30 years
- able to transit through broken ice at speeds up to 4 knots

Vessel General Arrangement

Passenger Seating for 12

Passenger Seating for 138

Wheelhouse



Mobility Devices & Bicycles

Passenger Boarding

Washroom

Main deck - layout 1

Mill Cove Terminal & Library

Marine Infrastructure

- 2 operational berths
- 3 additional berths
- 1 berth crane accessible
- Breakwater for safe harbour

Building

- Terminal & Library
- ~ 30,000 ft²
- Net-zero Ready
- Climate Change Resilient

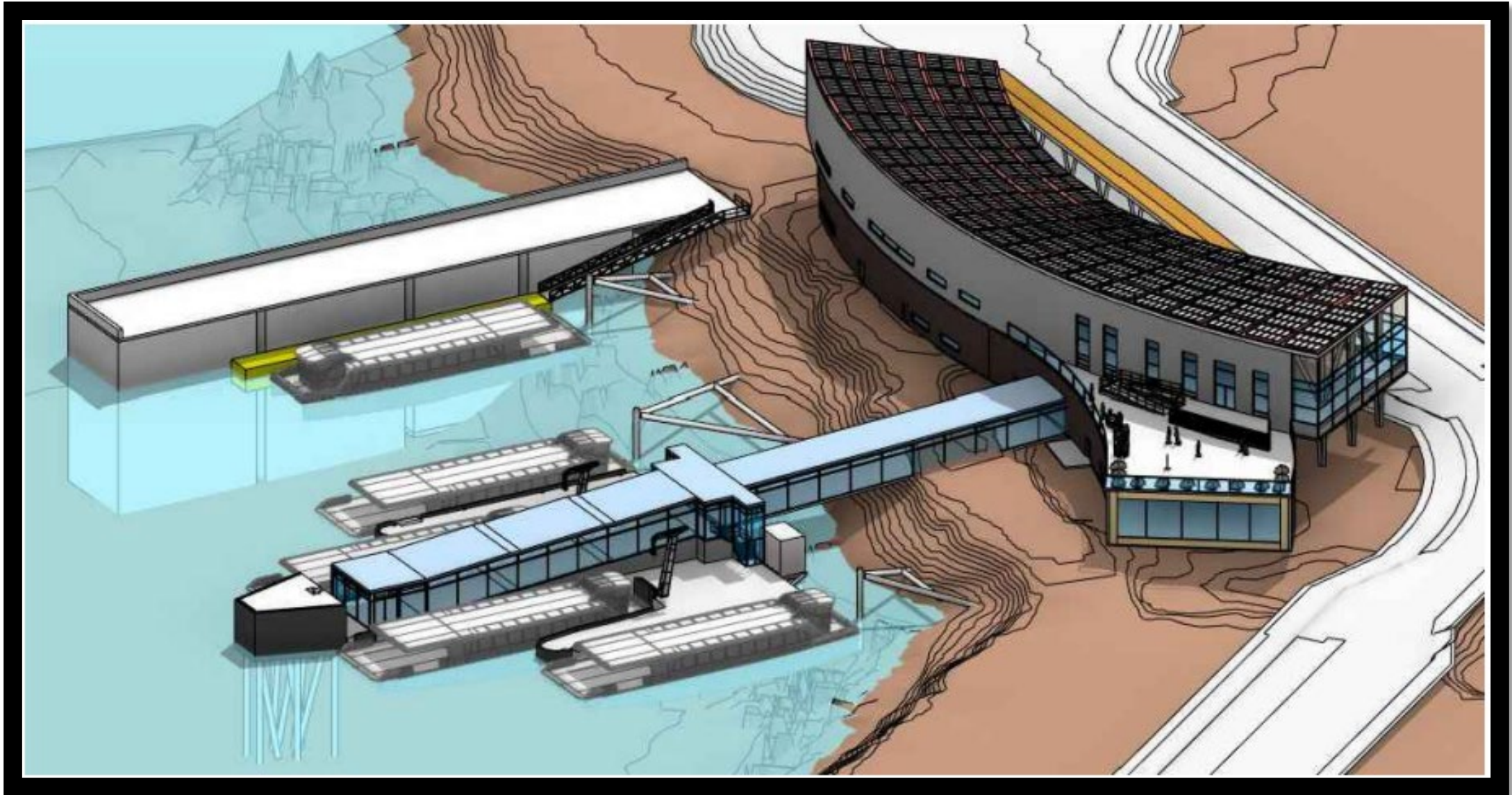
Site Works

- Bridge over CN Rail line
- Multi-modal connections
- Parking
- Climate Change Resilient





Mill Cove Terminal & Library Marine Infrastructure



Mill Cove Terminal Marine Infrastructure



Halifax Terminal

Marine Infrastructure

- 2 operational berths
- 2 berths for existing routes
- Accommodate future routes

Building

- Oriented linearly along boardwalk
- ~ 28,000 ft²
- Net-zero Ready
- Climate Change Resilient

Site Works

- Finished floor to rise 1.2 m
- 3 modes of access into the terminal
- Moved 9 m to the east, providing wider boardwalk

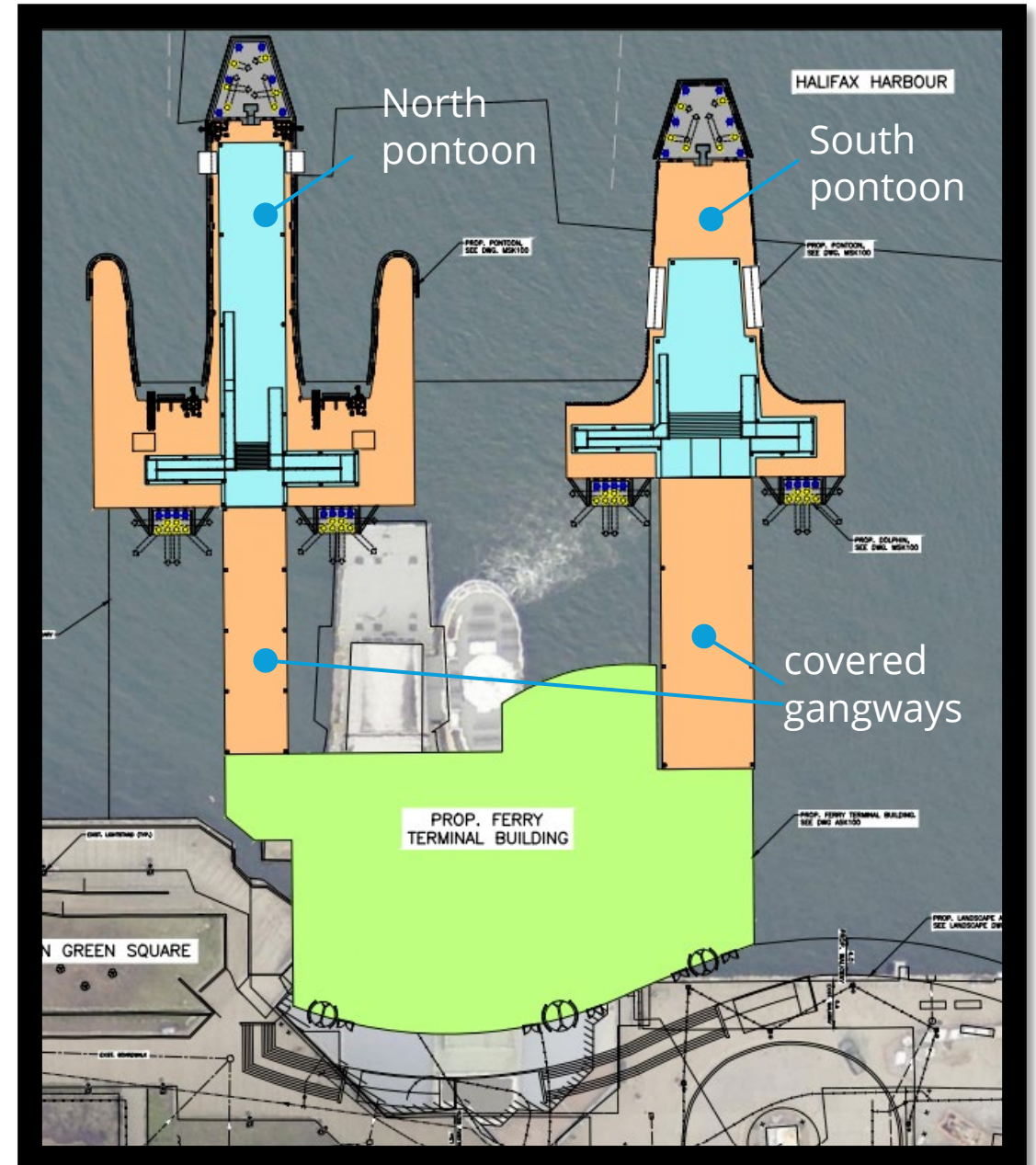
Halifax Terminal Marine Infrastructure



Halifax Terminal Marine Infrastructure

Characteristics

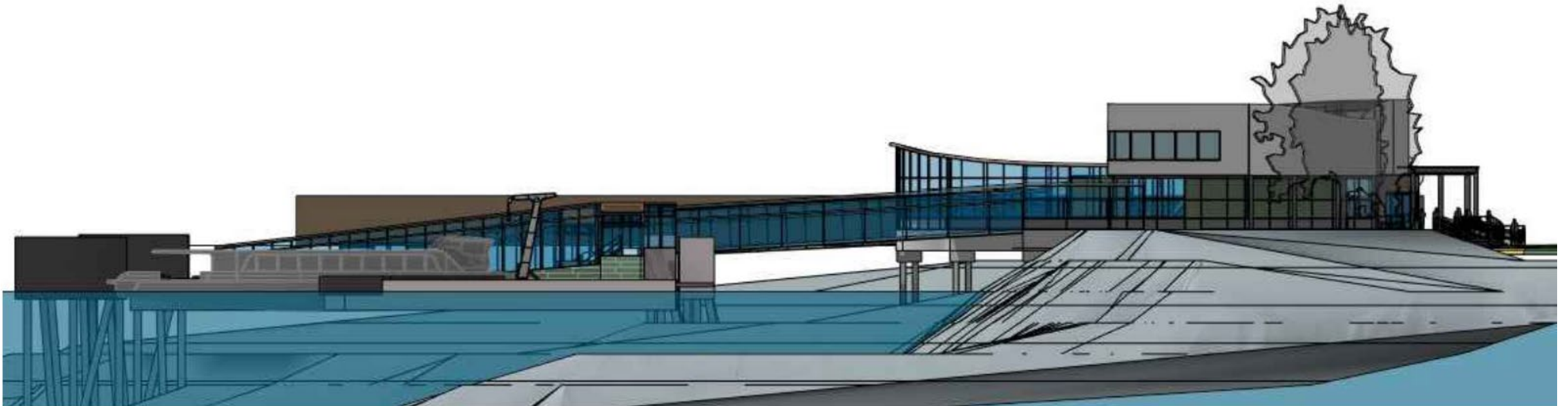
- 2 floating pontoons accessed by covered gangways
- Gangways are accessible in all tidal conditions
- South pontoon will provide 2 berths for existing ferry routes
- North pontoon will have 2 berths capable of fast charging
- A third berth can be added in the future to incorporate additional ferry routes





TOP 3 Priorities

1. Procurement
 - a. Terminal Progressive Design Build
 - b. Vessel Design Build
2. Consultation
3. Finalize Schedule and Timelines



Wela'liog
Thank you

