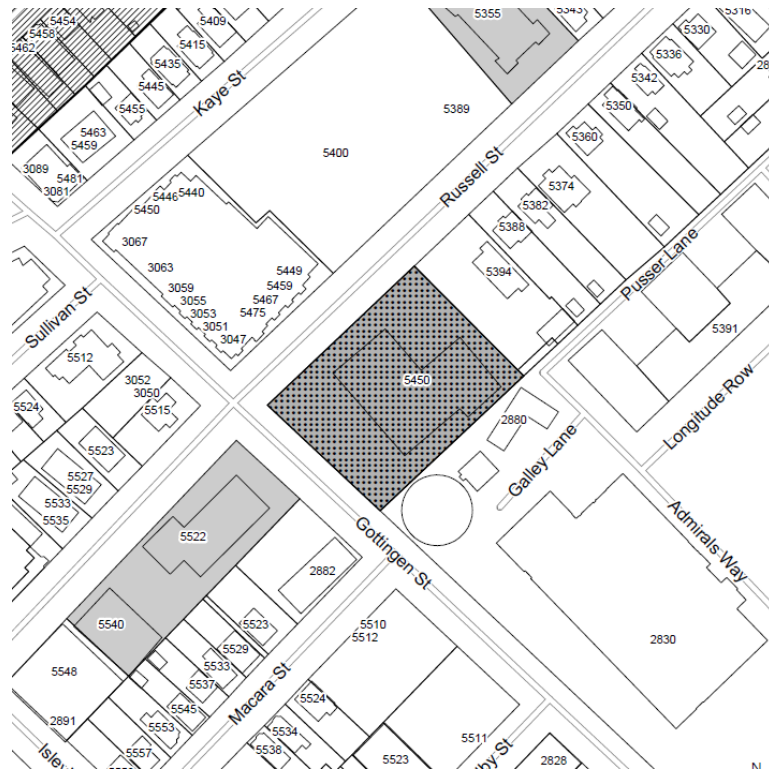


**HRTG-2024-00692 –  
5450 Russell Street, Halifax**

Request to Include Property in the Registry of  
Heritage Property for the Halifax Regional  
Municipality

# Location



# Registration for Evaluation Criteria – Buildings

Criterion	Maximum Score
1. Age	25
2.[a] Historical <u>or</u> [b] Architectural Importance	20
3. Significance of Architect / Builder	10
4. Architectural Merit: Construction Type <u>and</u> Style	20
5. Architectural Integrity	15
6. Relationship to Surrounding Area	10
<b>Total</b>	<b>100</b>

# 1. Age

- Board of School Commissioners began exploring site for a new boys' school in 1916
- Architect Walter Johannes Busch presented the Board with plans for ten-room school which were approved in 1916
- School is first identified in McAlpine's City Directory for 1916 and 1918 Assessment Map



# 1. Age

Date of Construction	Points	Timeline
1749 - 1785	25	Halifax Garrison Town to the Loyalist migration
1786 - 1830	20	Boom period following construction of Shubenacadie Canal
1831 - 1867	16	From Boom to Confederation
1868 - 1899	13	Confederation to the end of the 19 <sup>th</sup> century
1900 - 1917	9	Turn of the Century to Halifax Harbour Explosion
1918 - 1945	5	The War Years
1945 - Present	3	Post-War

## 2a. Historical Importance

- Representative of Public Education Reform in Nova Scotia at the turn of the century
- The Compulsory of Education Act of 1888 led to the construction of several new schools in Halifax at turn of the century
- The school was used as temporary living quarters for reconstruction workers, and a dining hall was built behind the school



Temporary Dining Hall for Reconstruction Workers after the Halifax Explosion, with 5450 Russell Street to the right

## 2a. Historical Importance

Importance	Points	Comments
Highly important, Unique, or representative of an era	16 - 20	
Moderately important, Unique, or representative of an era	11 - 15	
Somewhat important, or representative of an era	10 - 1	
Not important, Unique, or representative of an era	0	

### 3. Significance of Architect

- Designed by Walter Johannes Busch (1865-1924)
- Trained under his father, esteemed architect Henry F. Busch
- Specialized in educational building design: St. Patrick's Girls' High School, Chebucto Road Public School, Tower Road School and Bloomfield School.
- Contractors were Falconer & McDonald who specialized in institutional buildings



Walter  
Johannes  
Busch  
(Source:  
Ancestry.ca)

7



# 3. Significance of Architect

Status	Points
Nationally	7 - 10
Provincially Significant	4 - 6
Locally Significant	1 - 3
Not Significant	0



## 4a. Architectural Merit *[Construction Type]*

- Concrete framing clad in brick
- Few brick buildings within the surrounding area remain
- Although brick has been parged with stucco, this intervention could be reversed in the future



Stucco parging  
and granite block  
and stone  
foundation (May  
2024)

## 4a. Architectural Merit [*Construction Type*]

<b>A) Construction type</b>	<b>Points</b>
Very rare/ early example	7 - 10
Moderately rare/ early	4 - 6
Somewhat rare/ early example	1 - 3
Not rare/ common example	0

## 4b. Architectural Merit *[Style]*

- Character-defining elements include but are not limited to:
  - Two-and-a-half storey, Edwardian Classicism style institutional building with rectangular long façade;
  - Central bay at the north elevation topped by parapet and segmental arch inscription stone reading ‘A.D. 1916’;
  - Above-ground granite cut stone and rubblestone foundation;
  - Granite string courses and lug sills; and,
  - Two-leaf wood glazed entrance on the north elevation with tall multiple-light flat transom and arched transom.

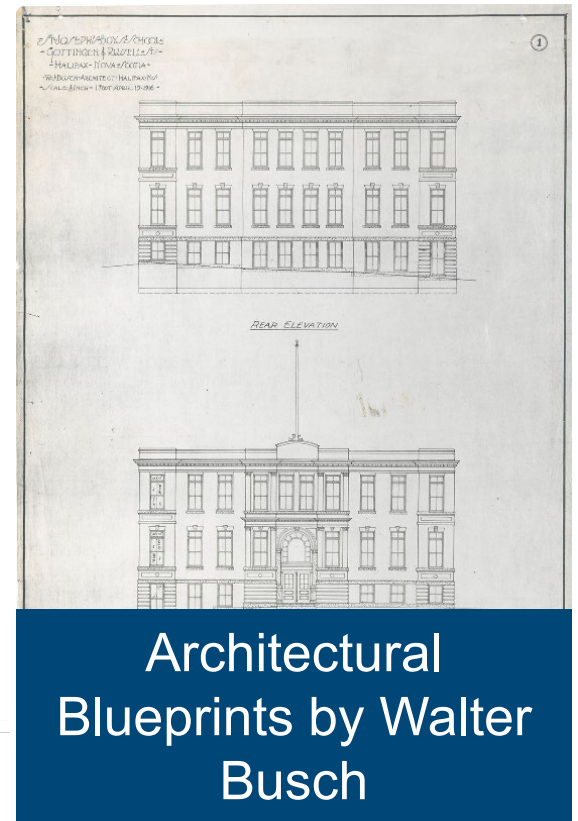


## 4b. Architectural Merit *[Style]*

<b>B) Style</b>	<b>Points</b>
Very rare/ early example	7 - 10
Moderately rare/ early	4 - 6
Somewhat rare/ early example	1 - 3
Not rare/ common example	0

# 5. Architectural Integrity

- Modifications to the original structure include:
  - Red brick has been parged with stucco;
  - Rear addition built circa 1958;
  - Changes to the transom above the north elevation entrance;
  - Removal of dentil trim and brick piers;
  - Windows have been replaced;
  - Decorative cornice with brackets, and brick detailing along portions of the foundation have been removed;
  - Voussoirs with keystones have been removed;
  - Entablature surrounding west elevation has been removed;
  - Some doors and windows have been blinded.



# 5. Architectural Integrity

<b>Exterior</b>	<b>Points</b>
Largely unchanged	11 - 15
Modest changes	6 - 10
Major changes	1 - 5
Seriously compromised	0



# 6. Relationship to Surrounding Area

- Serves as a landmark as one of the few masonry buildings in the area
- The school has physical, historical and visual relationships with St. Mark's Church as another Walter Busch designed, masonry institutional building of a similar era



Gottingen Street  
facing south (May  
2024)



# 6. Relationship to Surrounding Area

Points	Comments
6 - 10	The building is an important architectural asset contributing to the heritage character of the surrounding area.
1 - 5	The Architecture is compatible with the surrounding area and maintains its heritage character.
0	Does not contribute to the character of the surrounding area.



Russell Street facing east (May 2024)

**HALIFAX**

**Thank you**