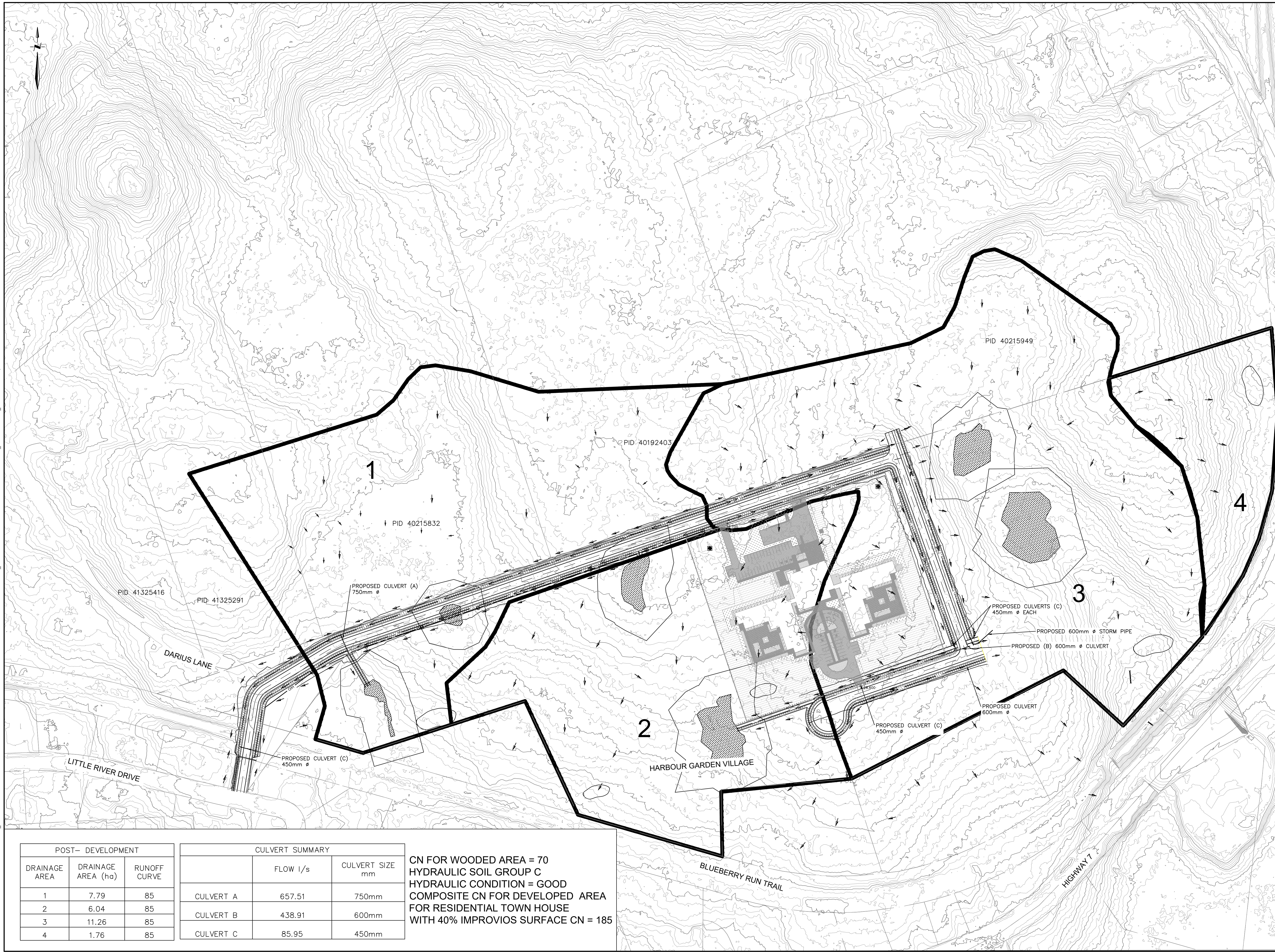


Y:\SHARED\CAD\ART\H01\PROJECTS\2023\DELTA\202308000 - HARBOUR GARDEN - MISC.ENG. SERVICES\SUBPHASE 03 - VARIANCE FOR ROAD A\24_CADD\DESIGN\DESIGN DRAWINGS\STORMWATER_MANAGEMENT_CONCEPT.DWG, 12/08/2024 9:35 AM



NOTES

LEGEND:

- PROPOSED DITCH
- STORMWATER RUNOFF DIRECTION
- PROPOSED CULVERT
- WETLAND & 20.0 m BUFFER
- STORMWATER MANAGEMENT FEATURE

0.0	2024/08/09	ISSUED FOR REVIEW	JAP	TV
NO.	DATE	REVISIONS	BY	APPR.

--	--	--	--	--



PRELIMINARY ONLY
DATE PLOTTED: Aug 12, 2024
NOT TO BE USED FOR CONSTRUCTION

PROJECT TITLE

HARBOUR GARDEN VILLAGE INC.

MUSQUODOBOIT HARBOUR N.S.

DRAWING TITLE

**POST DEVELOPMENT
CONCEPT STORMWATER
MANAGEMENT PLAN**

Scale	Drawn By	Design By
15m 0 30m (1:1500 FULL SCALE)	JAP	T.V.
	Checked By	Cadd Check
	T.V.	
	Sheet	01 of 01

File Name
STORMWATER_MANAGEMENT_CONCEPT.DWG

Drawing No.
C-02

POST- DEVELOPMENT		
DRAINAGE AREA	DRAINAGE AREA (ha)	RUNOFF CURVE
1	7.79	85
2	6.04	85
3	11.26	85
4	1.76	85

CULVERT SUMMARY		
	FLOW l/s	CULVERT SIZE mm
CULVERT A	657.51	750mm
CULVERT B	438.91	600mm
CULVERT C	85.95	450mm

CN FOR WOODED AREA = 70
 HYDRAULIC SOIL GROUP C
 HYDRAULIC CONDITION = GOOD
 COMPOSITE CN FOR DEVELOPED AREA FOR RESIDENTIAL TOWN HOUSE WITH 40% IMPROVIOS SURFACE CN = 185