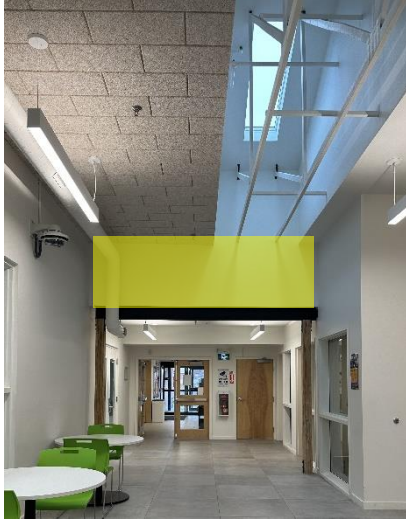


There are a number of available wall spaces in the Dartmouth North Community Centre that would be suitable for public art. Here are the main opportunities.

Atrium Walls

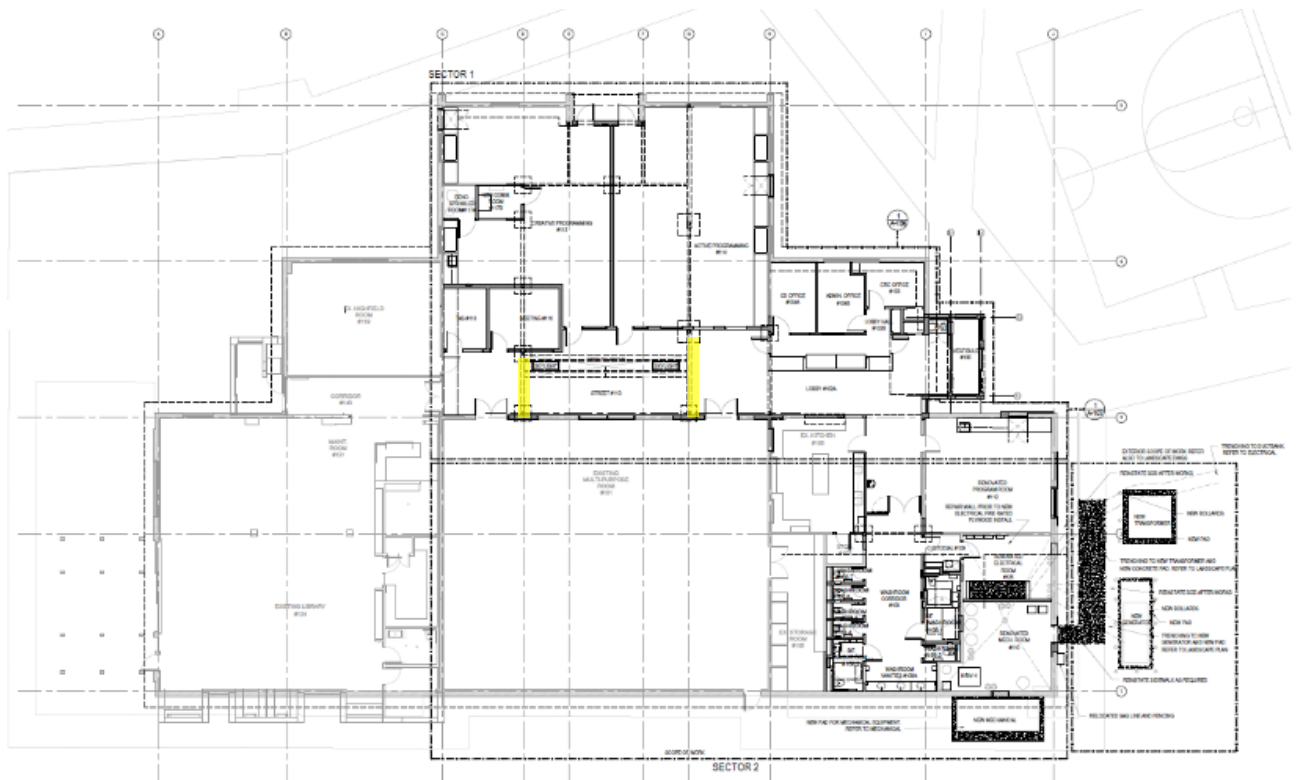
The atrium space features two opposing bulk-head walls. The space is high enough to not be reached by those using the space and also provides an interconnected opportunity.



Approx. 10' x 4'



Approx. 14' x 4'

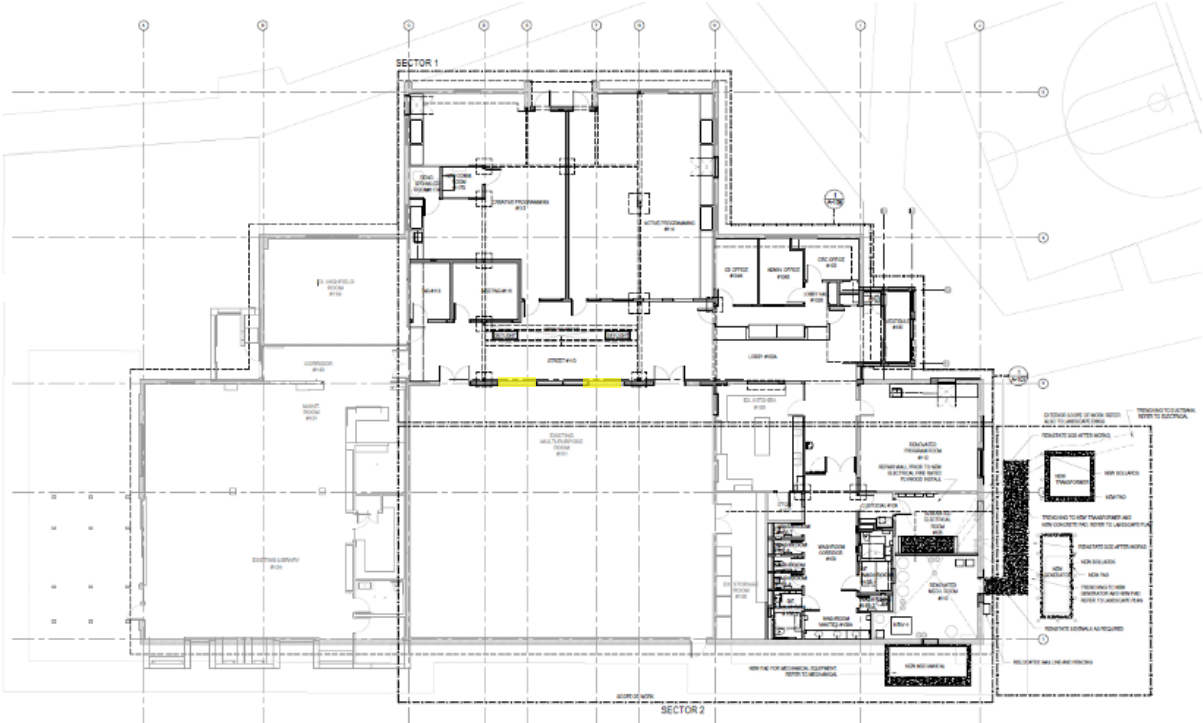


Multi-Purpose Wall

The wall outside the multipurpose room features two side-by-side walls with seating against them. Many people sit at these tables, and so if selected the artist may want to utilize only the upper portion of the walls.



Approx. 8' x 10'

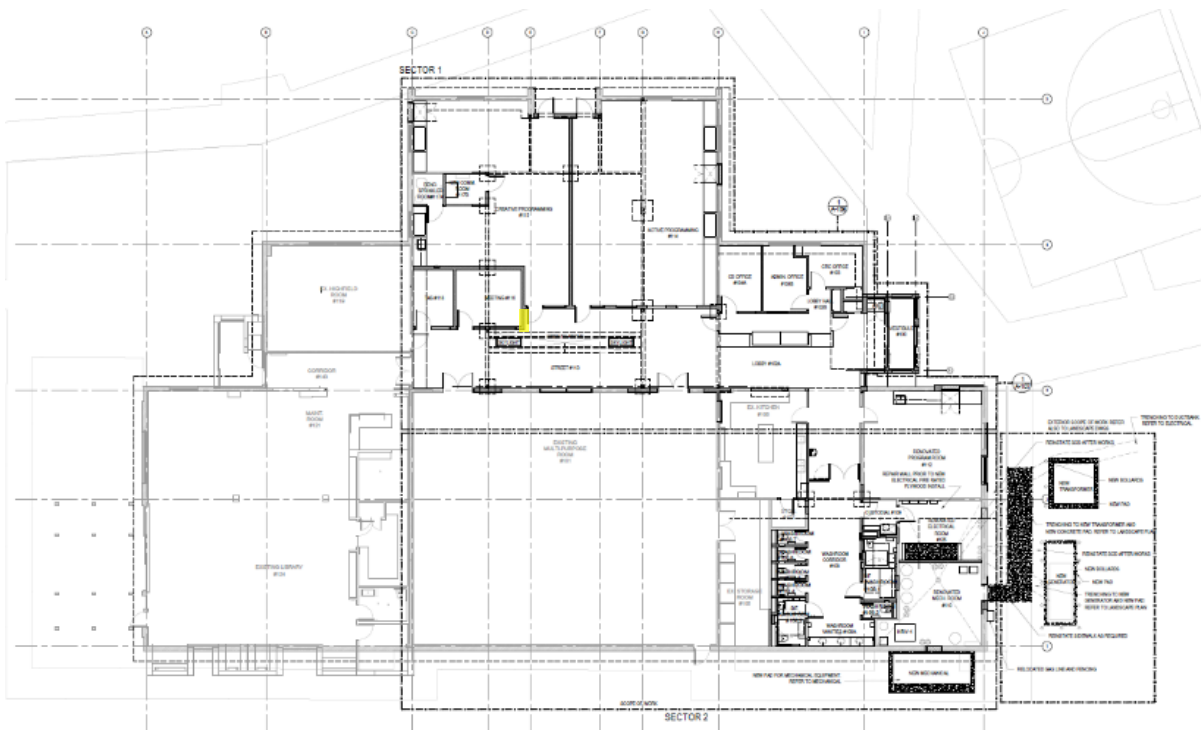


Activity Room Side-Wall

The Activity Room wall features a long narrow area.



Approx. 4' x 10'



Reception Area

The reception desk sits across from a long wall with a couch at the base of the wall.



Approx. 16' x 6'

