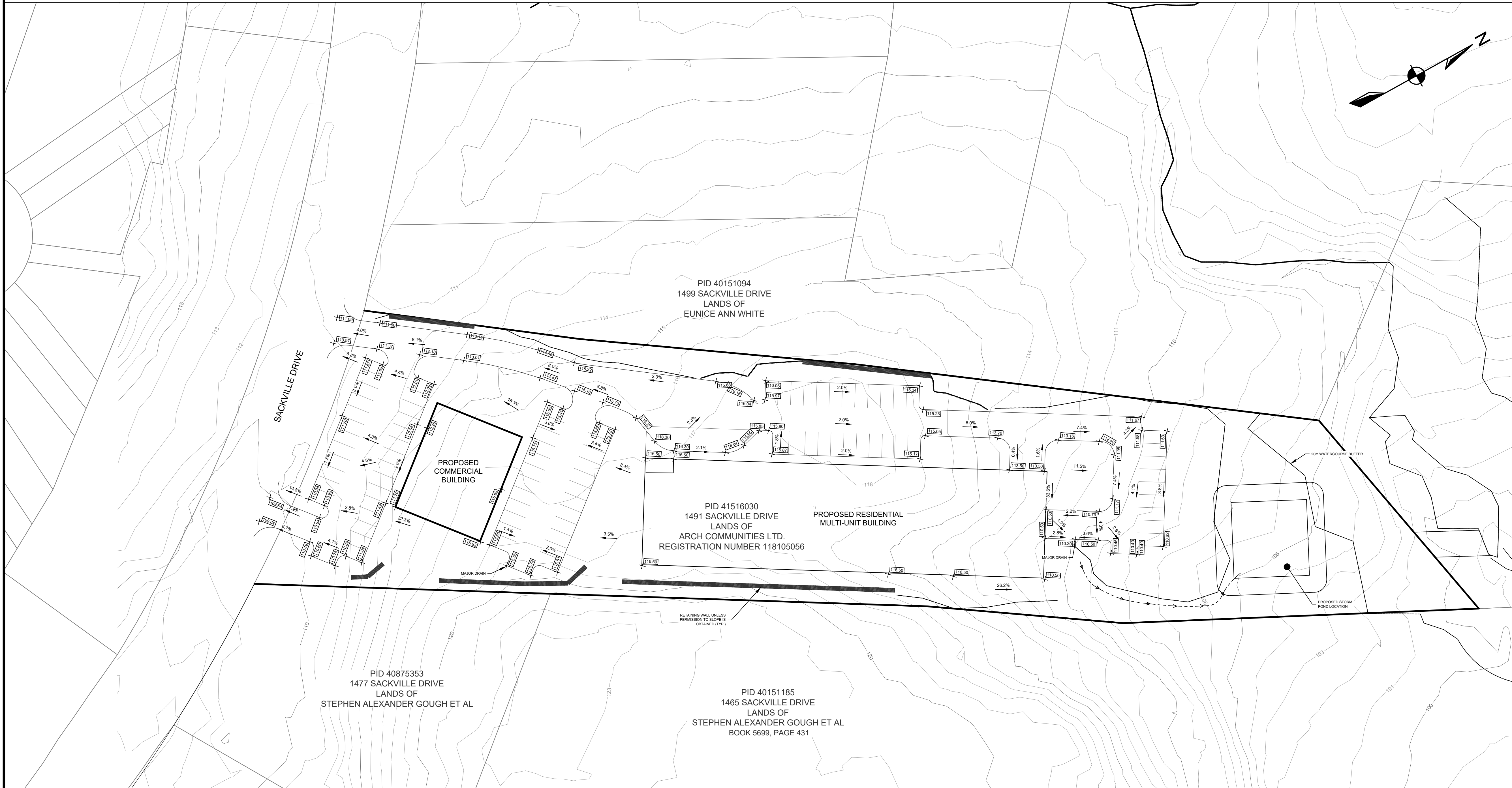
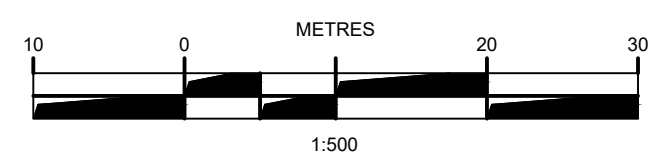
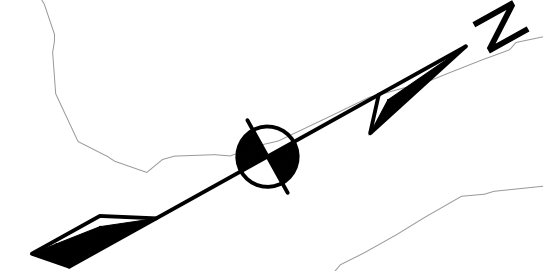




1. CONTOUR INFORMATION OBTAINED FROM HRM LIDAR DATA. CONTOUR INTERVAL = 1.0m.
2. ADJACENT PROPERTY BOUNDARIES OBTAINED FROM PROVINCIAL MAPPING ARE APPROXIMATE AND SUBJECT TO LEGAL SURVEY.
3. ZONING AND SERVICE BOUNDARIES OBTAINED FROM exploreHRM AND ARE APPROXIMATE.
4. WATERCOURSES AND WETLANDS BY McCALLUM ENVIRONMENTAL.
5. LAYOUT SUBJECT TO DETAILED DESIGN.



| ISSUE | DATE | DESCRIPTION | CONSULTANT |
|-------|------|-------------|------------|
| | | | |
| | | | |
| | | | |

DESIGNPOINT
engineering • surveying • solutions

902.832.5597 designpoint.ca

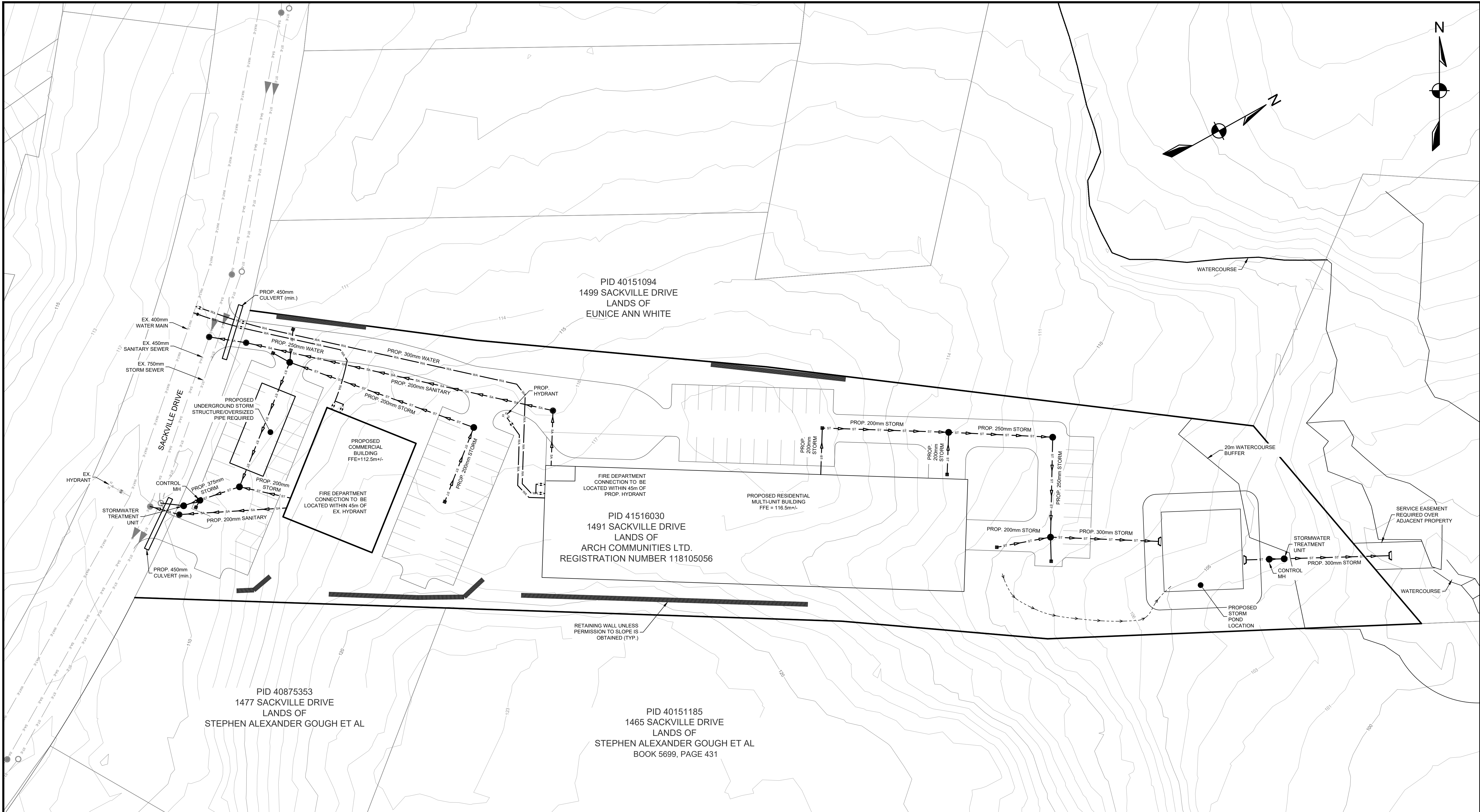
PRELIMINARY
31 JULY 2023

CLIENT
ARCH COMMUNITIES LTD.

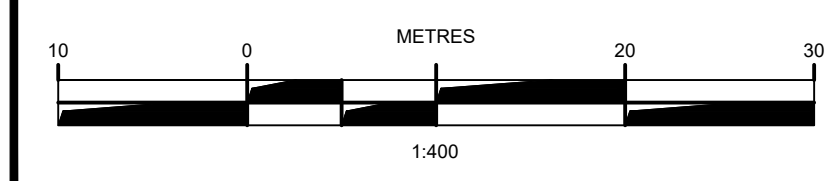
PROJECT DESCRIPTION
KELSIE LANDS
MIDDLE SACKVILLE, NS
SHEET DESCRIPTION

PRELIMINARY SITE GRADING

| | | | |
|----------------|-------------------------|-----------------------|--------------------------|
| Drawn STAFF | Engineer A. FORSYTHE | Project No. 23-176 | Drawing No. C1 |
| Scale 1:500 | File Name C1.dwg | | 1 of 1 |



- NOTES**
1. CONTOUR INFORMATION OBTAINED FROM HRM LIDAR DATA. CONTOUR INTERVAL = 1.0m.
 2. ADJACENT PROPERTY BOUNDARIES OBTAINED FROM PROVINCIAL MAPPING ARE APPROXIMATE AND SUBJECT TO LEGAL SURVEY.
 3. ZONING AND SERVICE BOUNDARIES OBTAINED FROM exploreHRM AND ARE APPROXIMATE.
 4. WATERCOURSES AND WETLANDS BY McCALLUM ENVIRONMENTAL.
 5. LAYOUT SUBJECT TO DETAILED DESIGN.
 6. ALL WORKS TO BE IN ACCORDANCE WITH HALIFAX WATER DESIGN AND CONSTRUCTION SPECIFICATIONS AND HALIFAX REGIONAL MUNICIPALITY MUNICIPAL DESIGN GUIDELINES (CURRENT EDITIONS).
 7. ALL WORKS TO BE IN ACCORDANCE WITH THE "STANDARD SPECIFICATION FOR MUNICIPAL SERVICES" PREPARED JOINTLY BY THE NOVA SCOTIA ROADBUILDERS ASSOCIATION AND THE CONSULTING ENGINEERS OF NOVA SCOTIA (CURRENT EDITION).
 8. ALL WORKS TO BE IN ACCORDANCE WITH REQUIREMENTS OF ALL PERMITS AND REGULATIONS AS ISSUED BY THE NOVA SCOTIA DEPARTMENT OF ENVIRONMENT.
 9. PROPERTY LINES BASED ON PROVINCIAL MAPPING AND ARE APPROXIMATE, AND SUBJECT TO LEGAL SURVEY.
 10. LOCATIONS OF EXISTING INFRASTRUCTURE ARE BASED ON BEST AVAILABLE INFORMATION, INCLUDING RECORD INFORMATION, AND ARE APPROXIMATE.
 11. SITE PLAN PREPARED BY OTHERS.
 12. DRAWINGS SUBJECT TO APPROVAL BY THE APPLICABLE APPROVAL AGENCIES (i.e. HALIFAX WATER, NOVA SCOTIA DEPARTMENT OF ENVIRONMENT, HALIFAX REGIONAL MUNICIPALITY) PRIOR TO CONSTRUCTION.
 13. PROPOSED PIPE SIZES AND LOCATIONS ARE PRELIMINARY AND SUBJECT TO DETAILED DESIGN AND APPROVAL, AND COORDINATION WITH MECHANICAL DESIGNER.
 14. WATER SYSTEM HYDRAULIC GRADE LINE = 558' (171m) (LUCASVILLE HIGH).
 15. STORMWATER MANAGEMENT MEASURES REQUIRED TO COMPLY WITH THE HALIFAX STORMWATER MANAGEMENT STANDARDS FOR DEVELOPMENT ACTIVITIES TO BE REVIEWED AND DETERMINED AS PART OF DETAIL DESIGN.
 16. STORMWATER BALANCING REQUIRED TO BALANCE POST DEVELOPMENT AND PRE-DEVELOPMENT FLOWS.



PRELIMINARY
1 JUN 2023

| | | | | |
|------------------------------|---|---|------------------------------------|----------------------|
| PREPARED FOR | PREPARED BY | PROJECT | Engineer | Drawn |
| ARCH COMMUNITIES LTD. | DESIGNPOINT engineering • surveying • solutions | SERVICING SCHEMATIC KELSIE LANDS MIDDLE SACKVILLE, NOVA SCOTIA | ASF | STAFF |
| | | | Scale 1:250 | Date 31 JUL 2023 |
| | | | Project No. 23-176 | Drawing No. C-SCH |
| | | | Filename 23-176 - Prelim C1.dwg | 1 OF 1 |