



August 22, 2024

Alderney Drive Functional Plan: Phase 1

ATAC Meeting

Re: Item 9.1.1



Meeting Goals

- 1 WSP to provide an overview of the Project
- 2 Review the work that has been completed so far
- 3 Review the Intersection Concept Options and discuss public feedback
- 4 ATAC to provide feedback/comments on revised Intersection Concept Options
- 5 Inform ATAC that the Survey is open from July 17th – August 23rd

www.shapeyourcityhalifax.ca/alderney-drive





Project
Introduction

Existing
Conditions

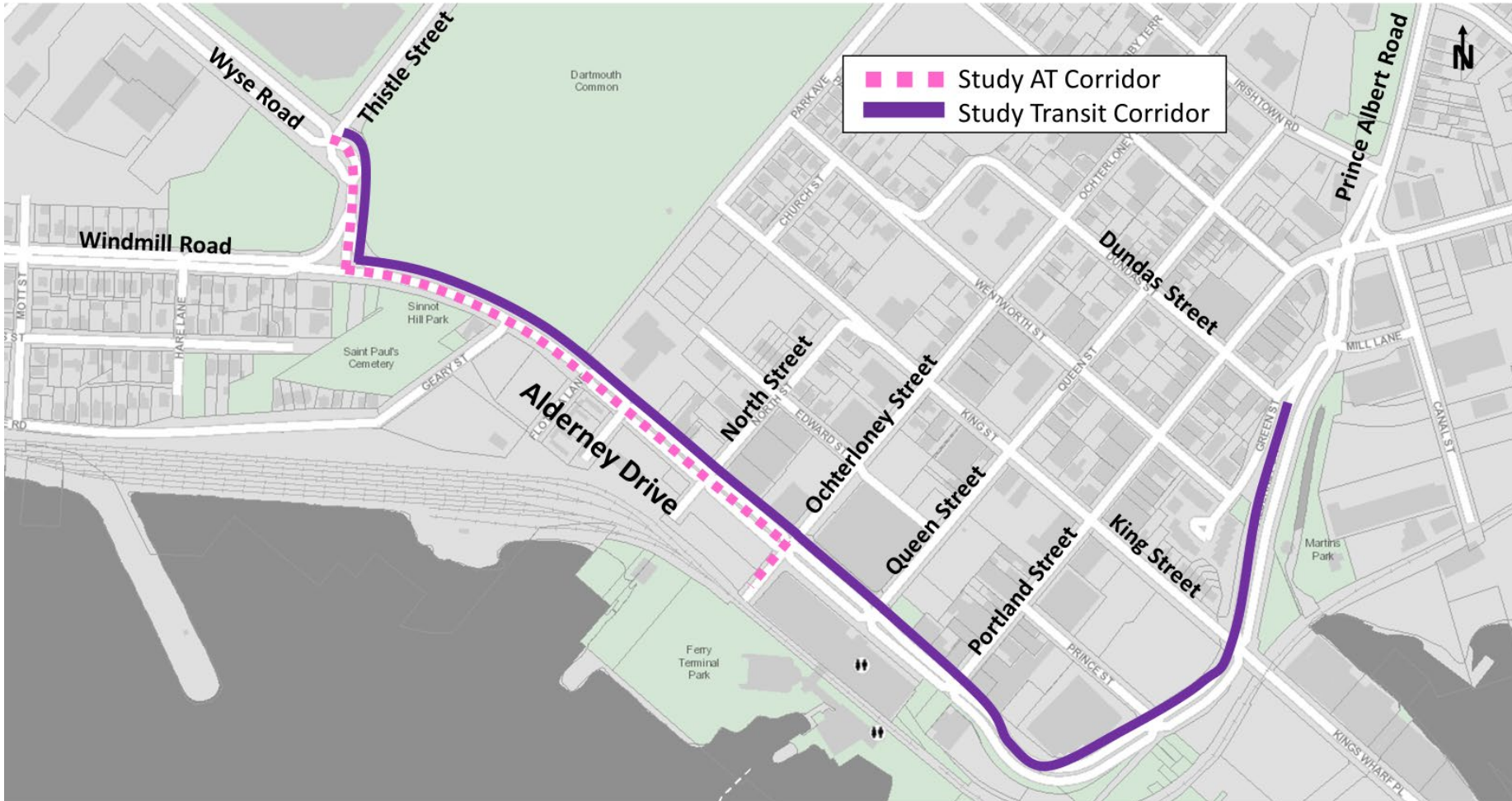
Concept
Discussion

Next Steps

PROJECT INTRODUCTION

Project Objective

The objective of the project is to develop an Alderney Drive functional plan for a transit corridor between Wyse Road and Prince Albert Road and all ages and abilities (AAA) active transportation route between the Dartmouth Harbourfront Trail (ending at Alderney Gate) to the protected bike lanes on Wyse Road at the intersection with Thistle Street.



Municipal Guidance

1 Integrated Mobility Plan (IMP)

- Established a vision to provide residents with a choice of connected, healthy, affordable, sustainable travel options for moving both people and goods, through integrated transportation and land-use planning.
- Identified the need to establish an AAA bicycle network in the Regional Centre of HRM.
- AAA bicycle network includes the Alderney Gate to Wyse Road bikeway corridor with connections to the Dartmouth Harbourfront Trail, the Lyle-Shore Local Street Bikeway, the Wyse Road protected bike lanes and the Dartmouth Common Greenway.
- Developed a Rapid Transit Strategy for faster, better-connected, more frequent, and easier-to-use transit service.

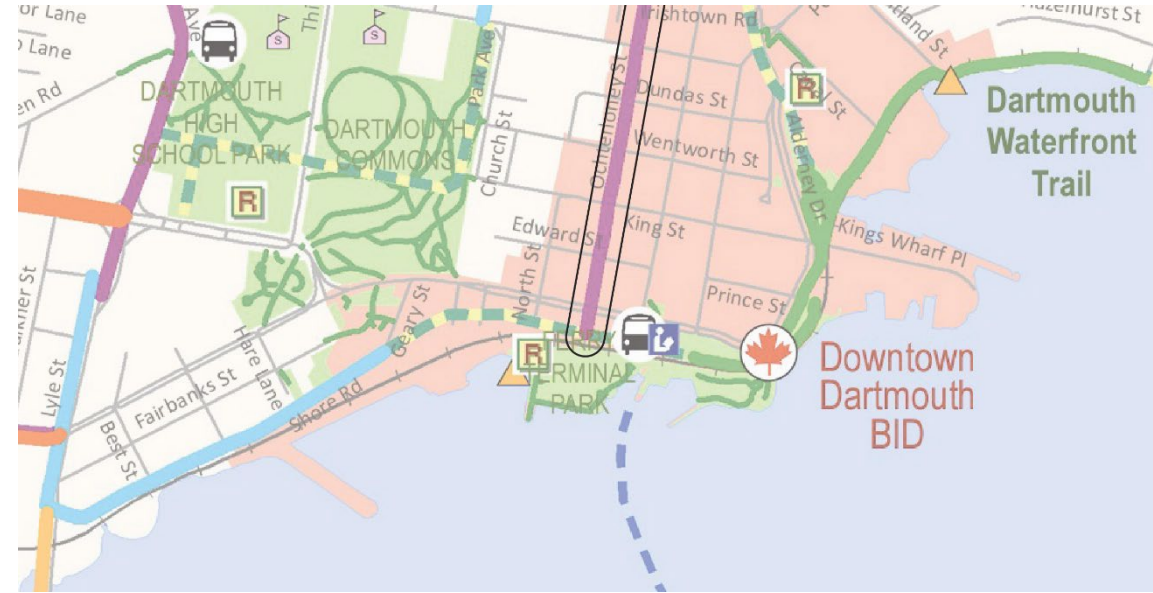


Municipal Guidance

2



Active Transportation (AT) Priorities Plan




- Set municipal priorities to double the number of trips made on foot and by bike by 2026.
- Identified the additional connection to the Ochterloney Street candidate Bike Route.








Project Scope




- A** Initiate project
 - Host Kick-Off Meeting
 - Conduct site visit

- B** Establish existing conditions of the project study area
 - Prepare base plan drawing 
 - Prepare Existing Conditions Report 

- C** Develop up to three conceptual AAA active transportation designs for the study corridor
 - Prepare plan view drawings 
 - Prepare typical cross sections 
 - Prepare intersection drawings 

-  **D** Conduct public and stakeholder engagement
- Develop engagement strategy 
 - Prepare for and host stakeholder and public engagement
 - Prepare What We Heard Report 

- E** Evaluate the conceptual bikeway designs
 - Establish a list of evaluation criteria 
 - Evaluate the concept design
 - Prepare Options Evaluation Summary Report 

- F** Prepare functional design and report
 - Develop 30% design drawings 
 - Prepare Class 'C' cost estimate 
 - Prepare Functional Plan Report 



Project
Introduction

Existing
Conditions

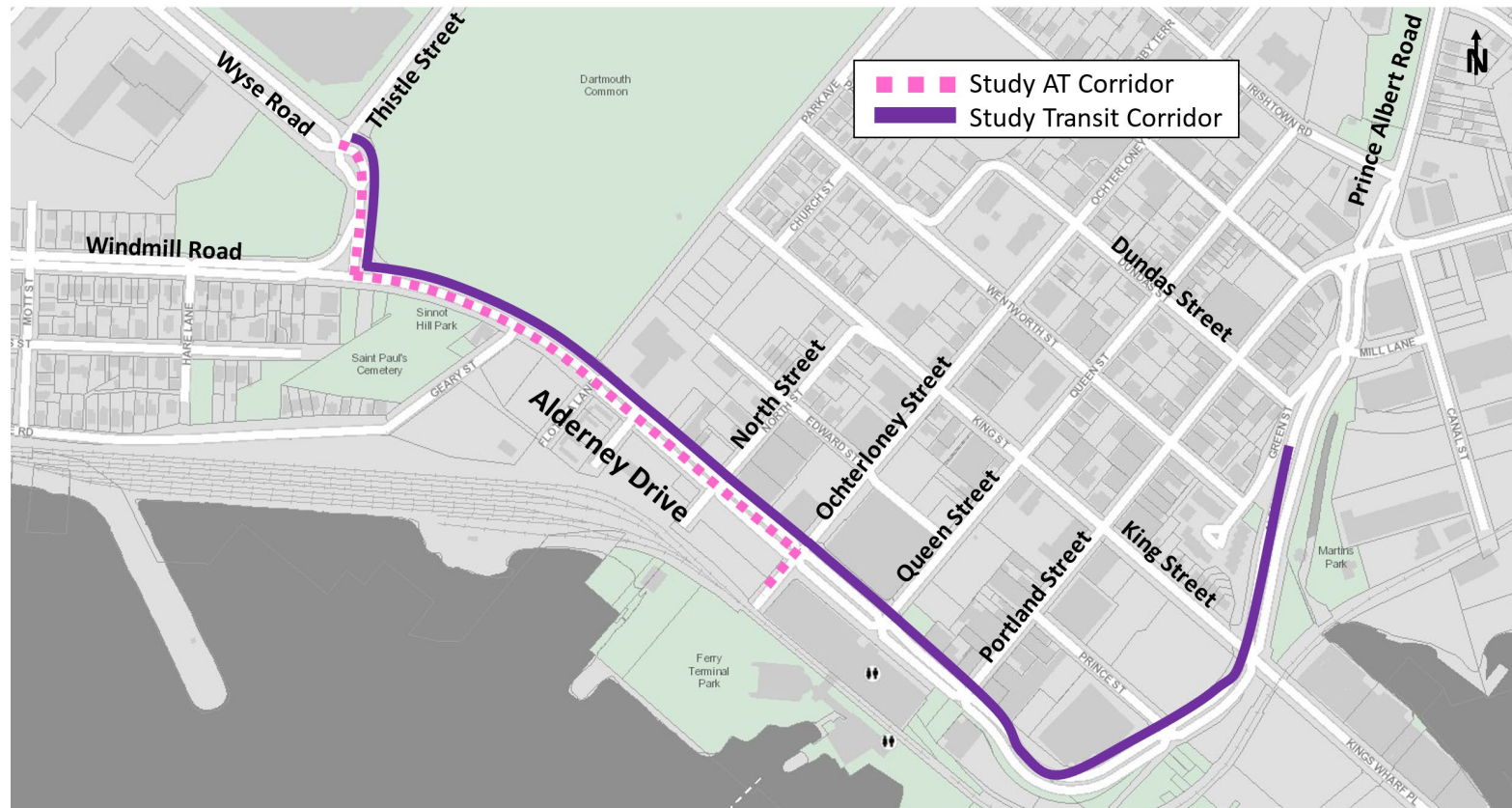
Concept
Discussion

Next Steps

EXISTING CONDITIONS

Project Study Area

The project study area, located predominantly within Downtown Dartmouth, encompasses segments of the arterial roadways of Wyse Road, Windmill Road, and Alderney Drive, as well as the local street segment of Ochterloney Street between Alderney Drive and the Dartmouth Harbourfront Trail. The arterial road segments have also been designated as part of a future transit priority corridor. The northwest end of the active transportation corridor is bordered by the Dartmouth Common while the southeast end connects to the downtown core, providing access to shops and services.



Traffic Control



LEGEND



Signalized Intersection

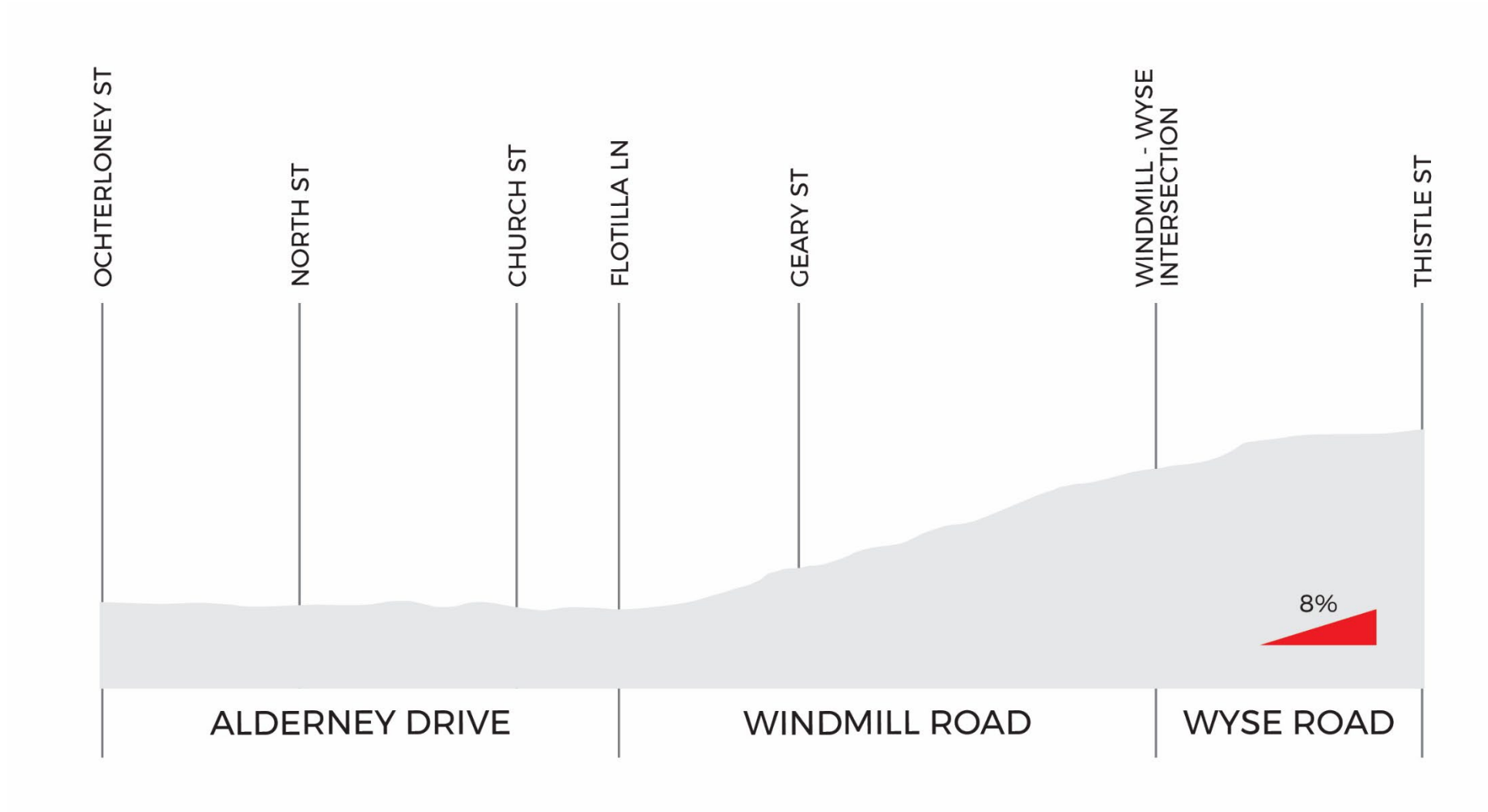


RRFB Crossing



RA-5 Crossing

Grade



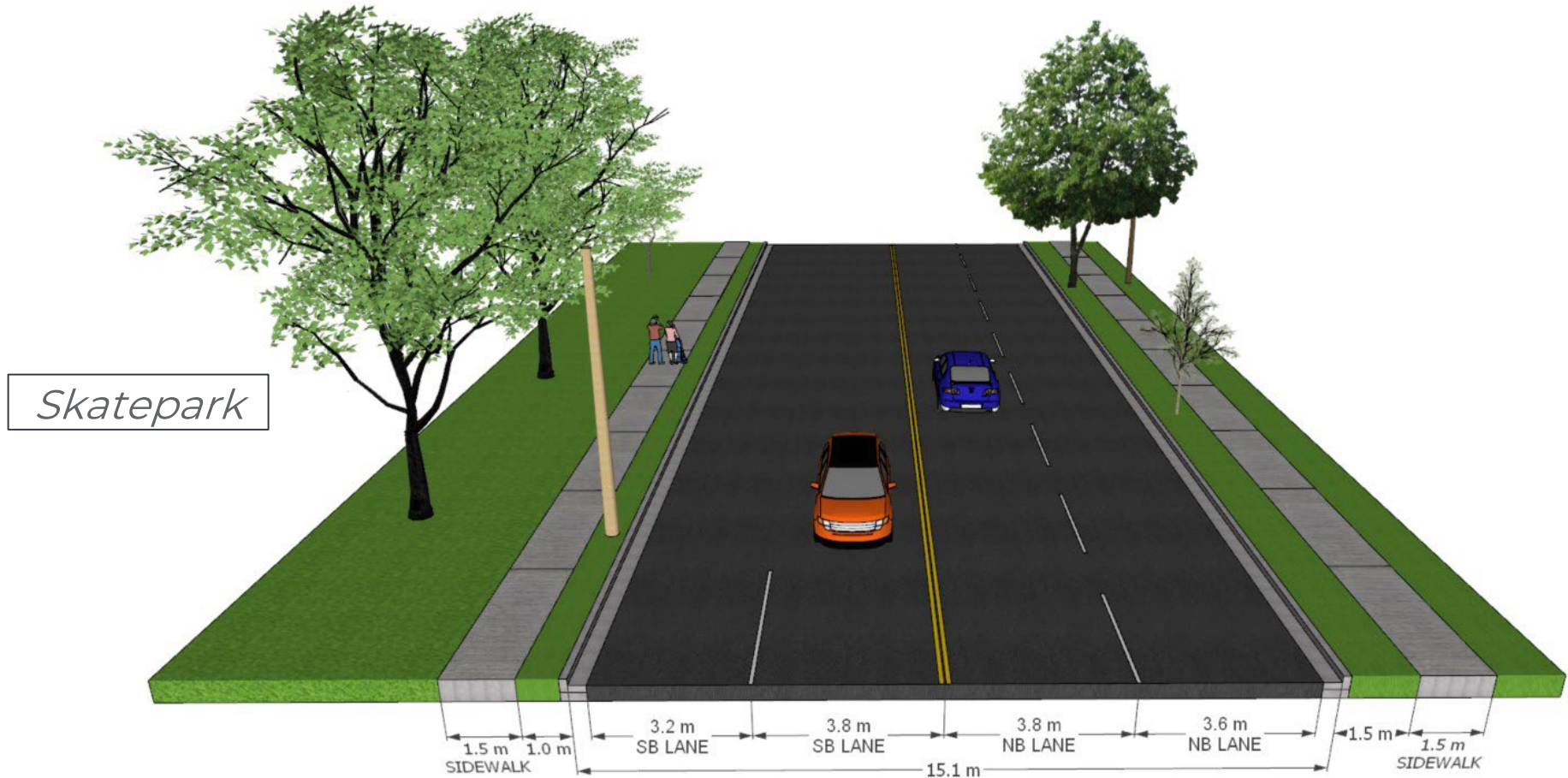
Cross Section Locations





Wyse Road

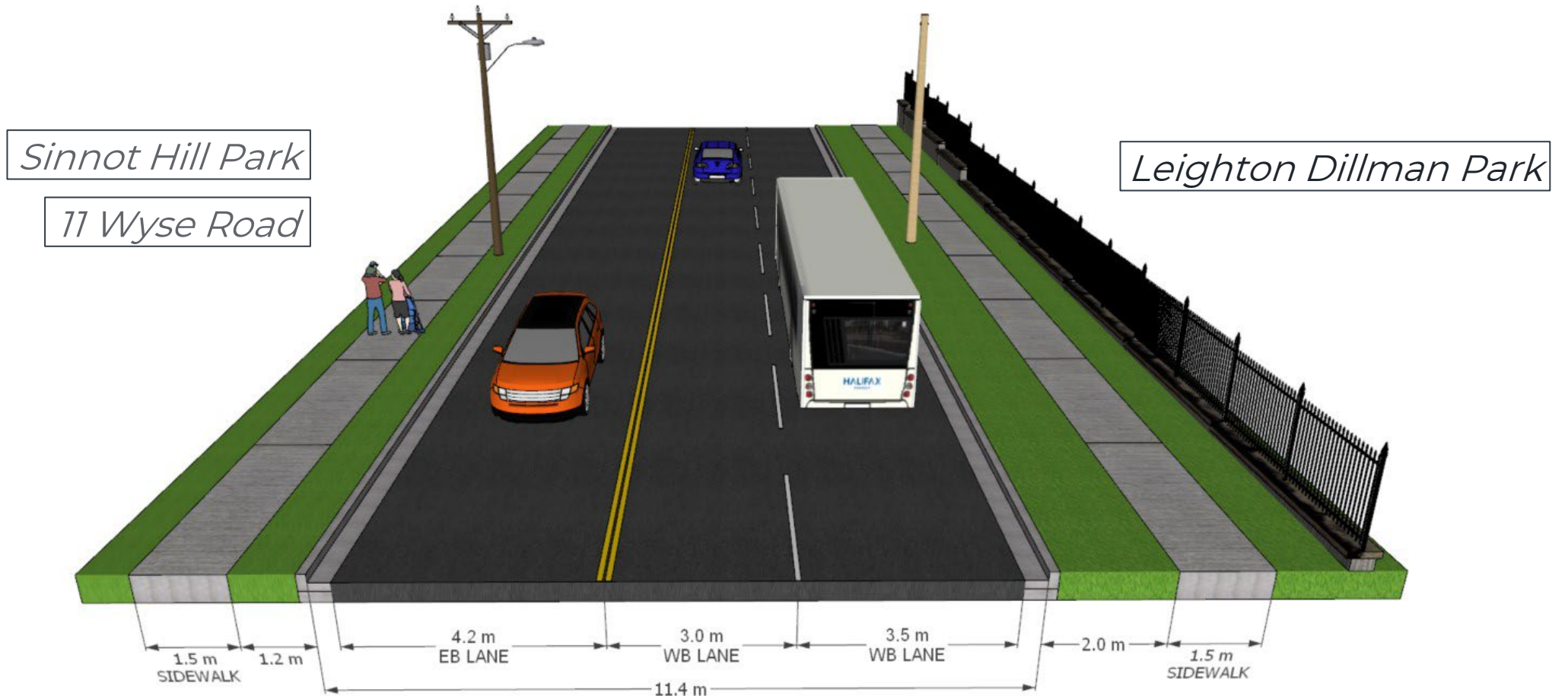
Wyse Road, between Thistle Street and Windmill Road, is a 3-lane arterial roadway with a southbound left transit queue-jump lane and a right turn channel on the approach to the signalized intersection with Windmill Road. Wyse Road is designated as a day-time truck route and facilitates the movement of buses for many transit routes to and from both the Bridge Terminal and Alderney Terminal. The statutory speed limit is 50km/hr.





Windmill Road

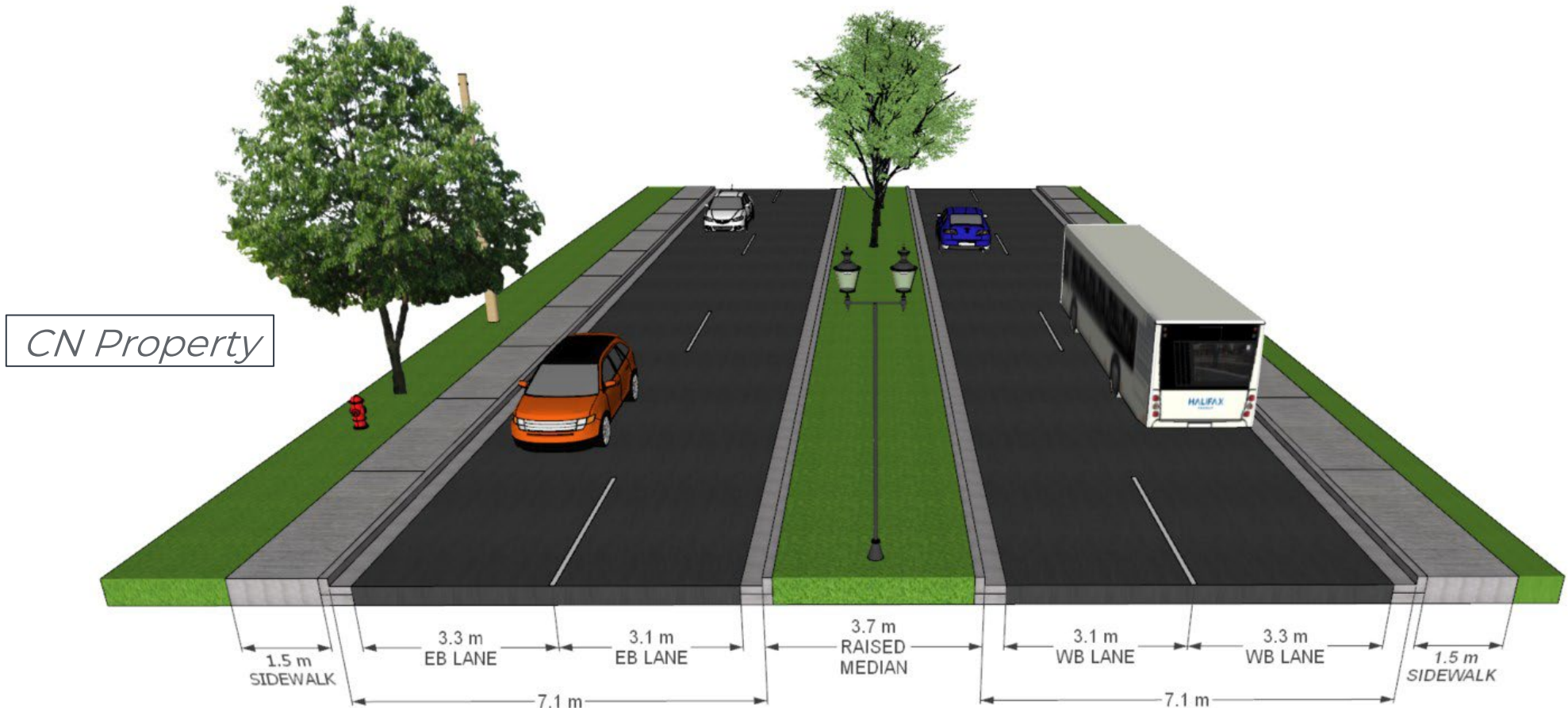
Windmill Road, to the east of the intersection with Wyse Road, is a 3-lane arterial roadway with a statutory speed limit of 50km/h. Within the project study area, Windmill Road is designated as a day-time truck route and facilitates the movement of buses for many transit routes to and from both the Bridge Terminal and Alderney Terminal.





Alderney Drive

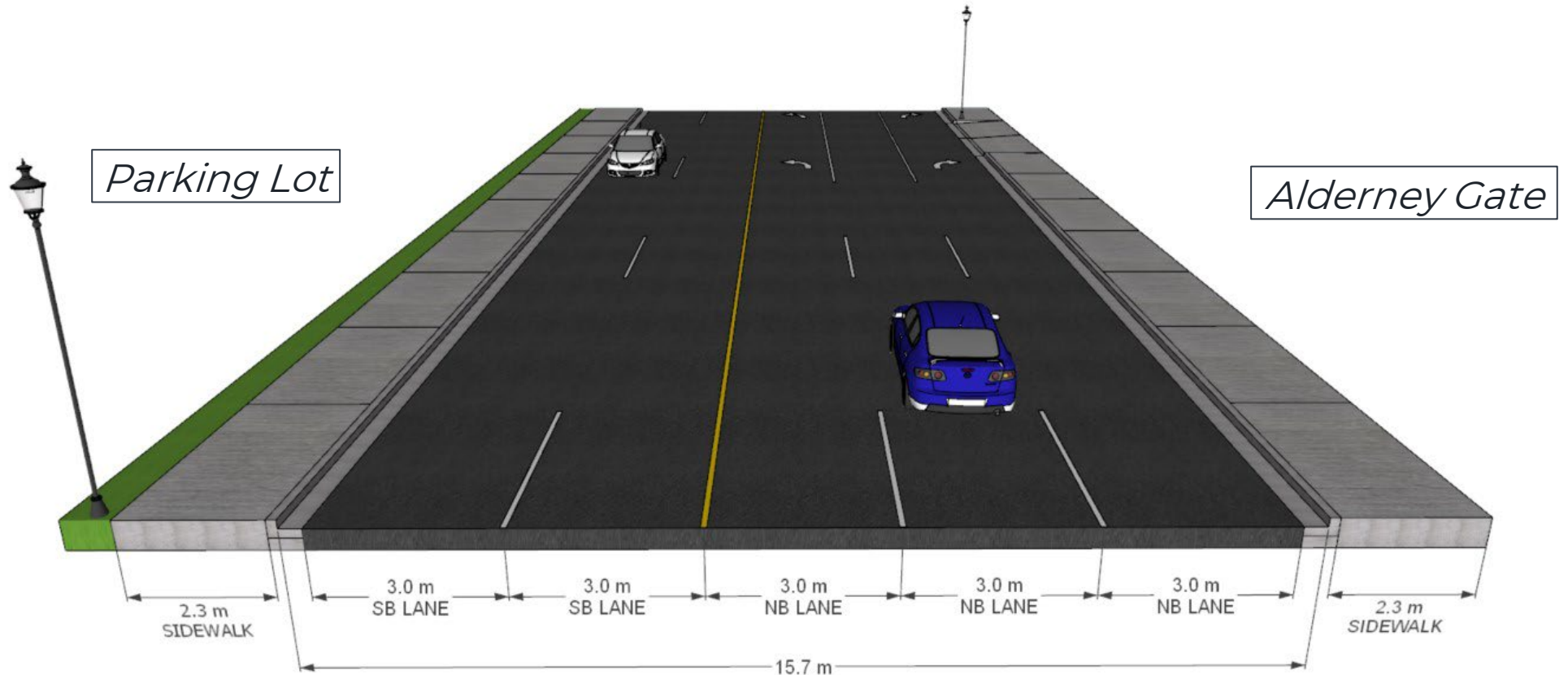
Alderney Drive, between Flotilla Lane and Ochterloney Street, is a 4-lane arterial roadway with a raised centre median and statutory speed limit of 50km/h. Alderney Drive is designated as a day-time truck route and facilitates the movement of buses for many transit routes to and from both the Bridge Terminal and Alderney Terminal.





Ochterloney Street

Ochterloney Street, between Alderney Drive and the Dartmouth Harbourfront Trail, is a short 3-lane local street with a northbound left turn lane and a right turn lane approaching the signalized intersection with Alderney Drive. The statutory speed limit is 50km/hr.



Bicycle Network

Project Introduction

Existing Conditions

Concept Discussion

Next Steps



LEGEND

- | | | | |
|--|-------------------------------|--|------------------------------------|
| | Existing Protected Bikeway | | Wyse Road Protected Bike Lanes |
| | Existing Greenway | | Macdonald Bridge Bikeway |
| | Proposed Greenway | | Nantucket Avenue Multi-Use Pathway |
| | Proposed Local Street Bikeway | | Dartmouth Common Greenway |
| | Bikeway Desired (Type TBD) | | Dartmouth Harbourfront Trail |

Core Pedestrian Network

Project
Introduction

Existing
Conditions

Concept
Discussion

Next Steps



LEGEND

- Existing Sidewalk
- Existing Multi-Use Pathway

Traffic Volume Data

The following eight intersections have been considered in the analysis completed for this functional plan, and turning movement counts were collected in September 2024.

1. Wyse Road and Thistle Street
2. Wyse Road at Windmill Road
3. Alderney Drive and North Street
4. Alderney Drive and Ochterloney Street
5. Alderney Drive and Queen Street
6. Alderney Drive and Portland Street
7. Alderney Drive and King Street
8. Alderney Drive and Portland Street / Prince Albert Road





Project
Introduction

Existing
Conditions

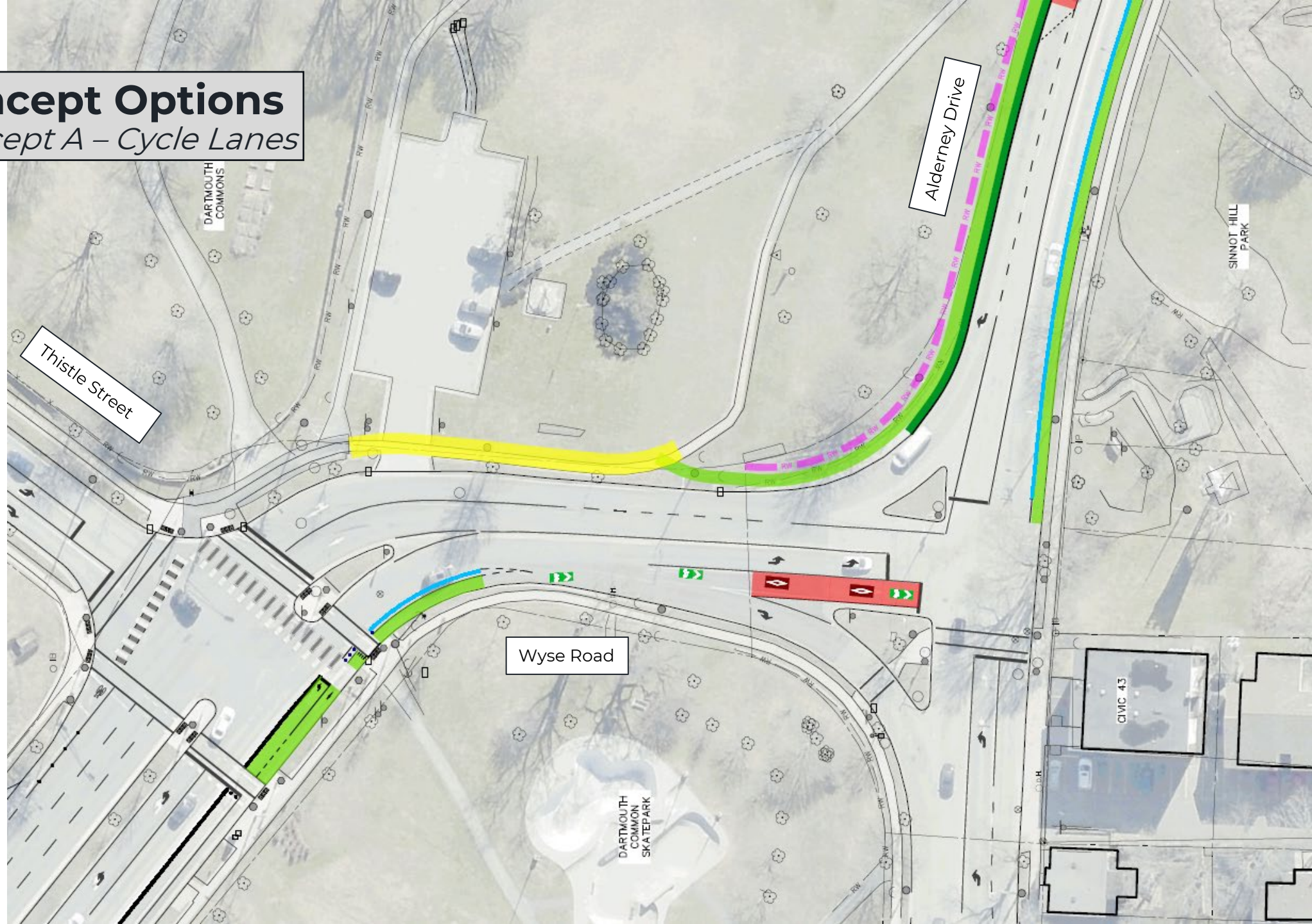
Concept
Discussion

Next Steps

CONCEPT DISCUSSION – Wyse to Ochterloney

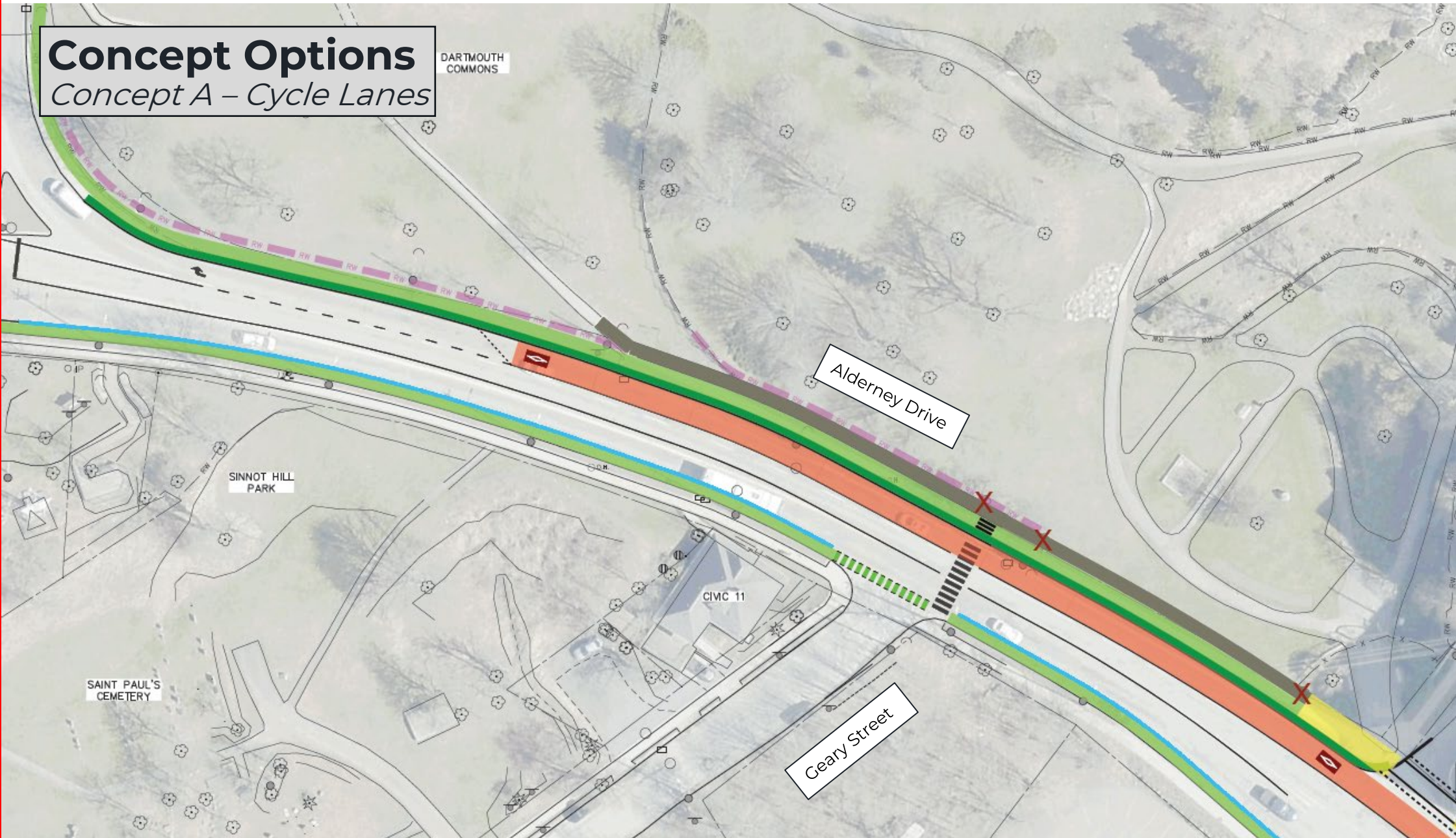
Concept Options

Concept A – Cycle Lanes



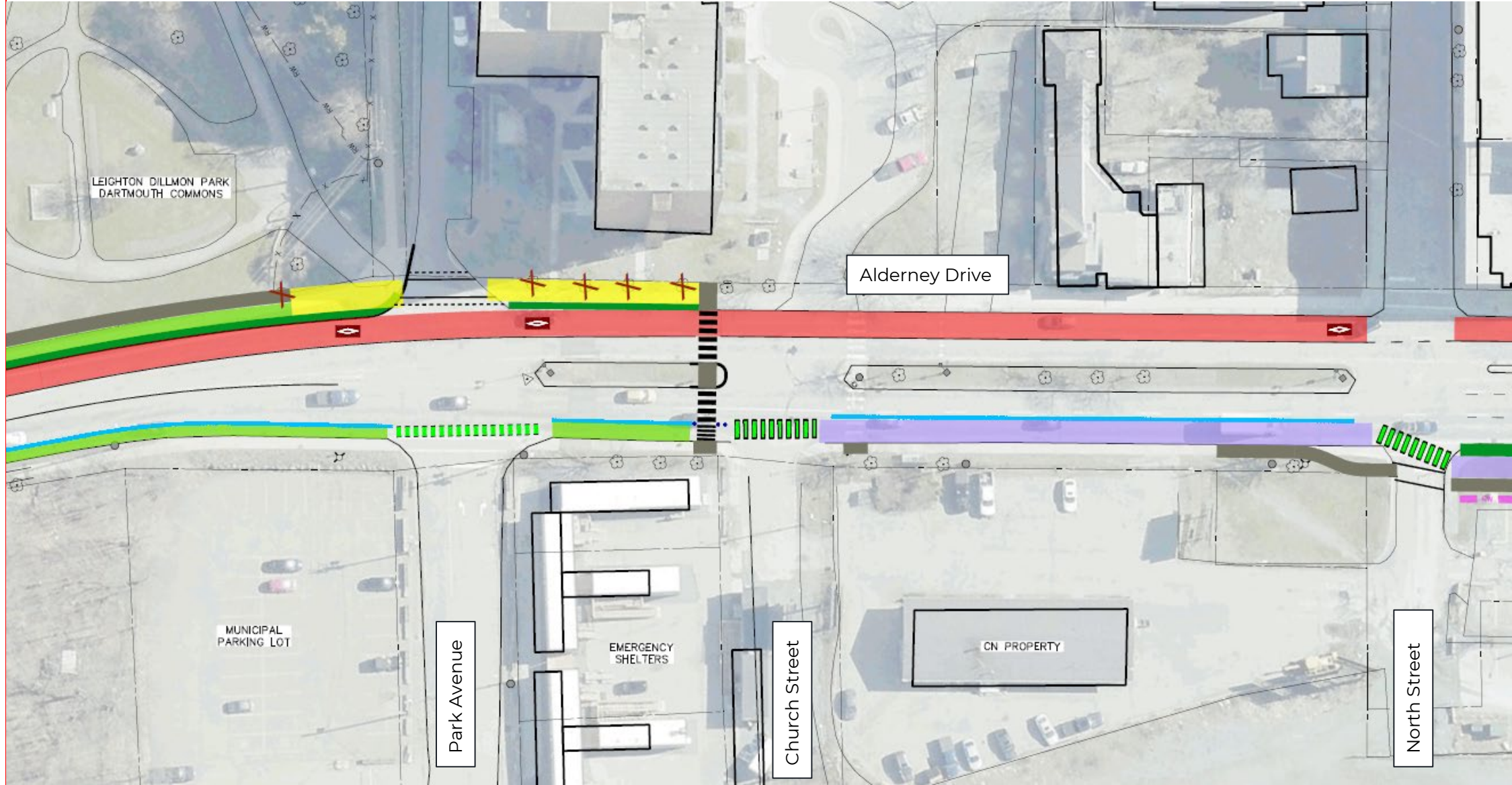
Concept Options

Concept A – Cycle Lanes



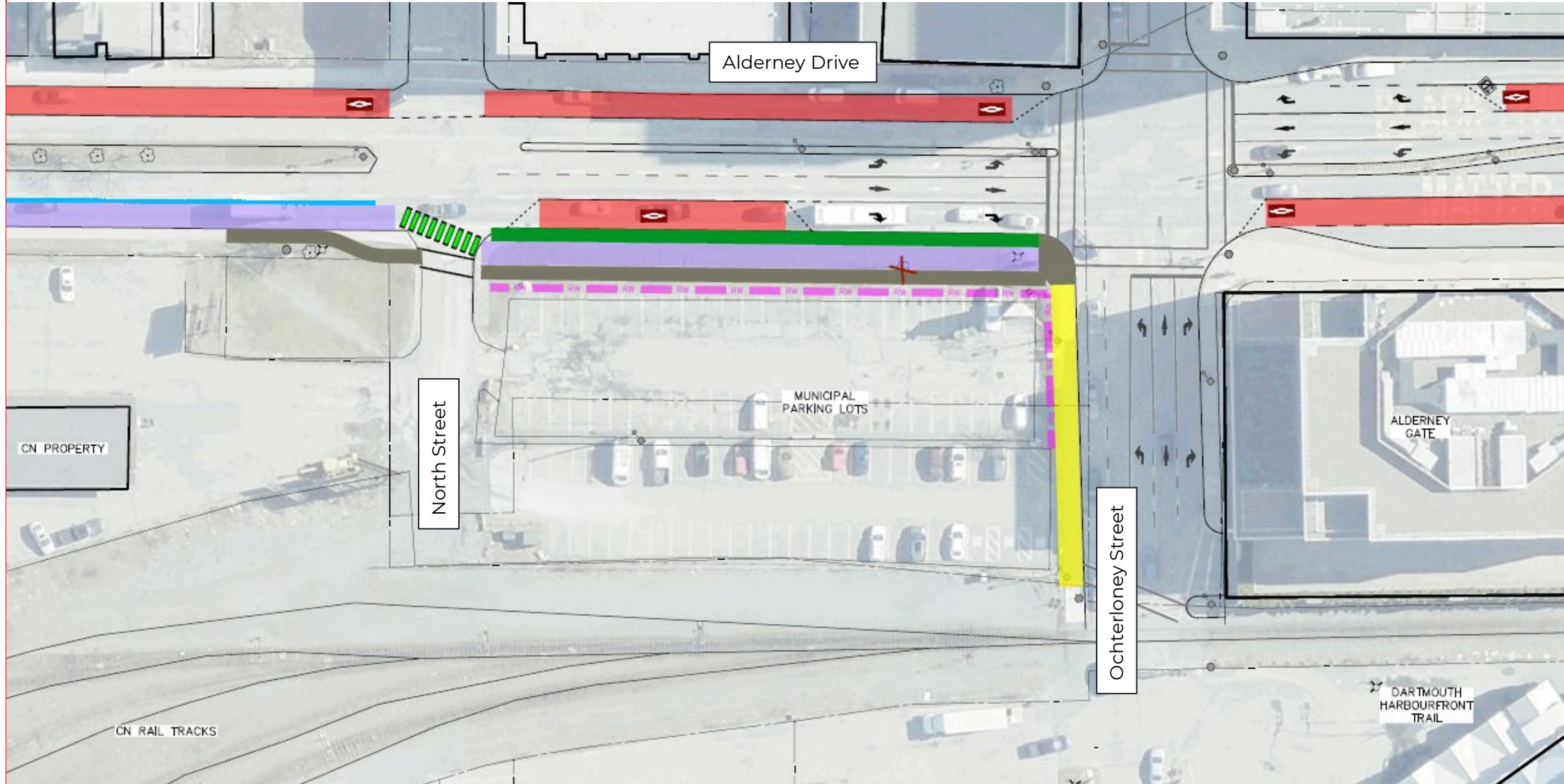
Concept Options

Concept A – Cycle Lanes



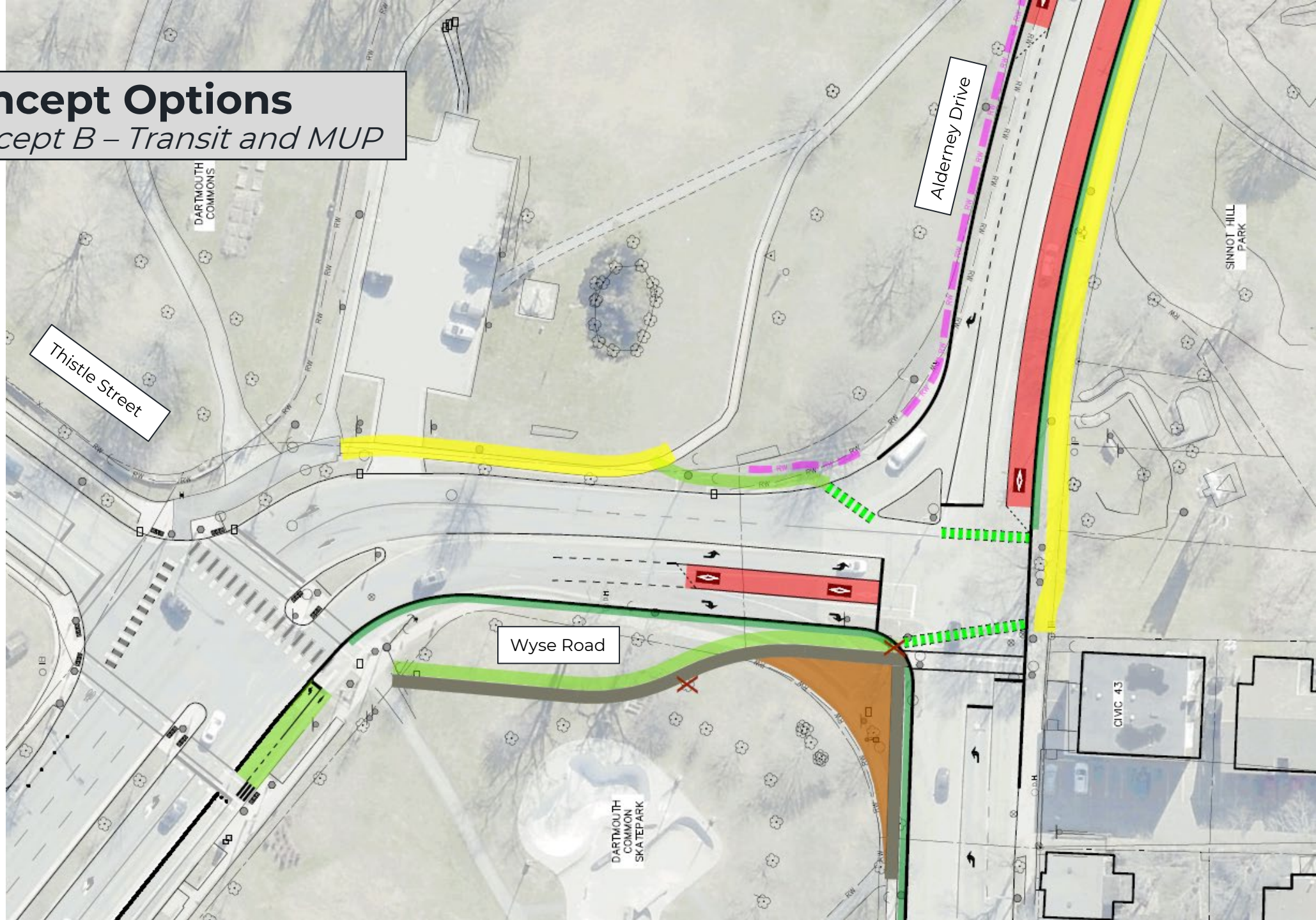
Concept Options

Concept A – Cycle Lanes



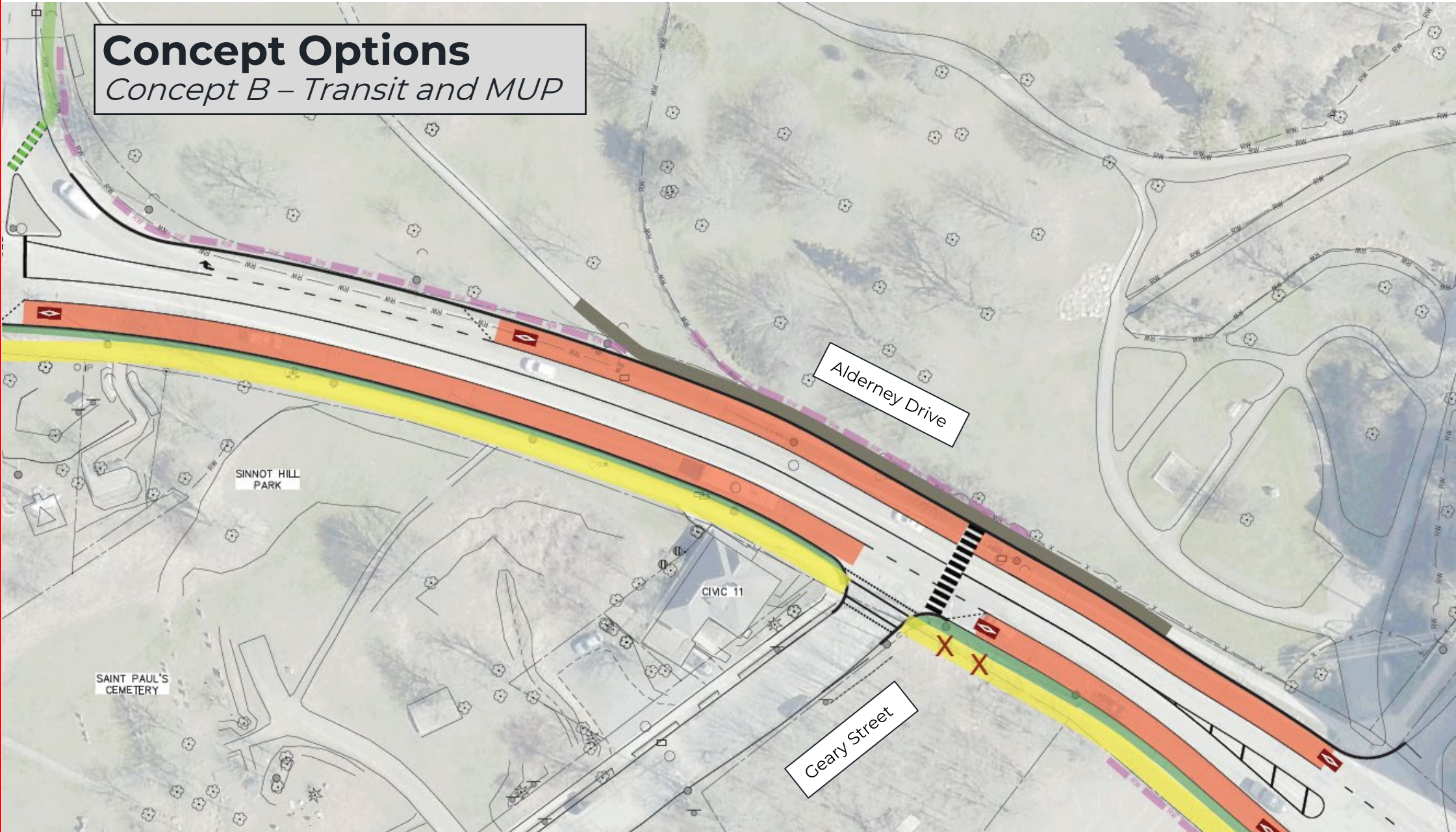
Concept Options

Concept B – Transit and MUP



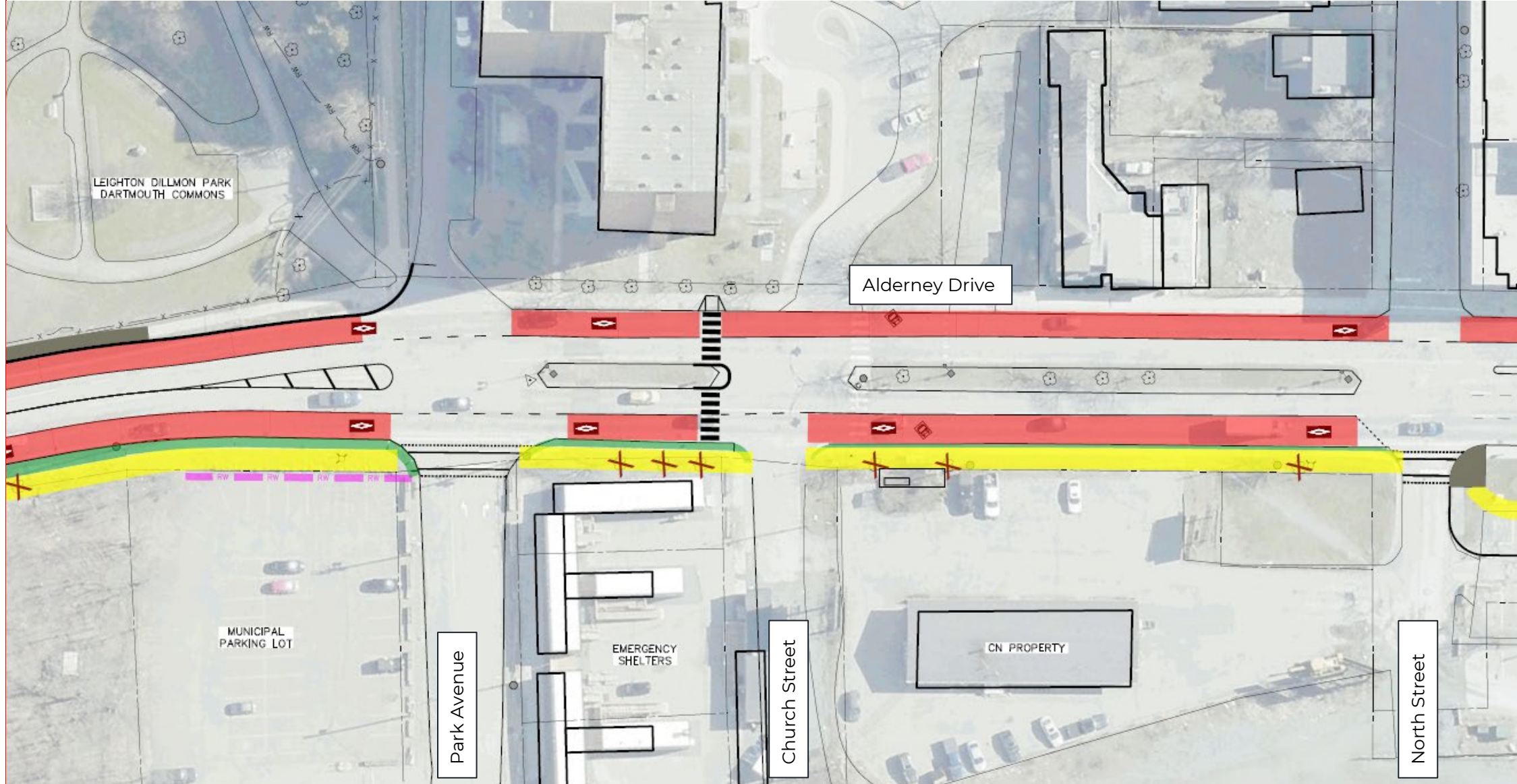
Concept Options

Concept B – Transit and MUP



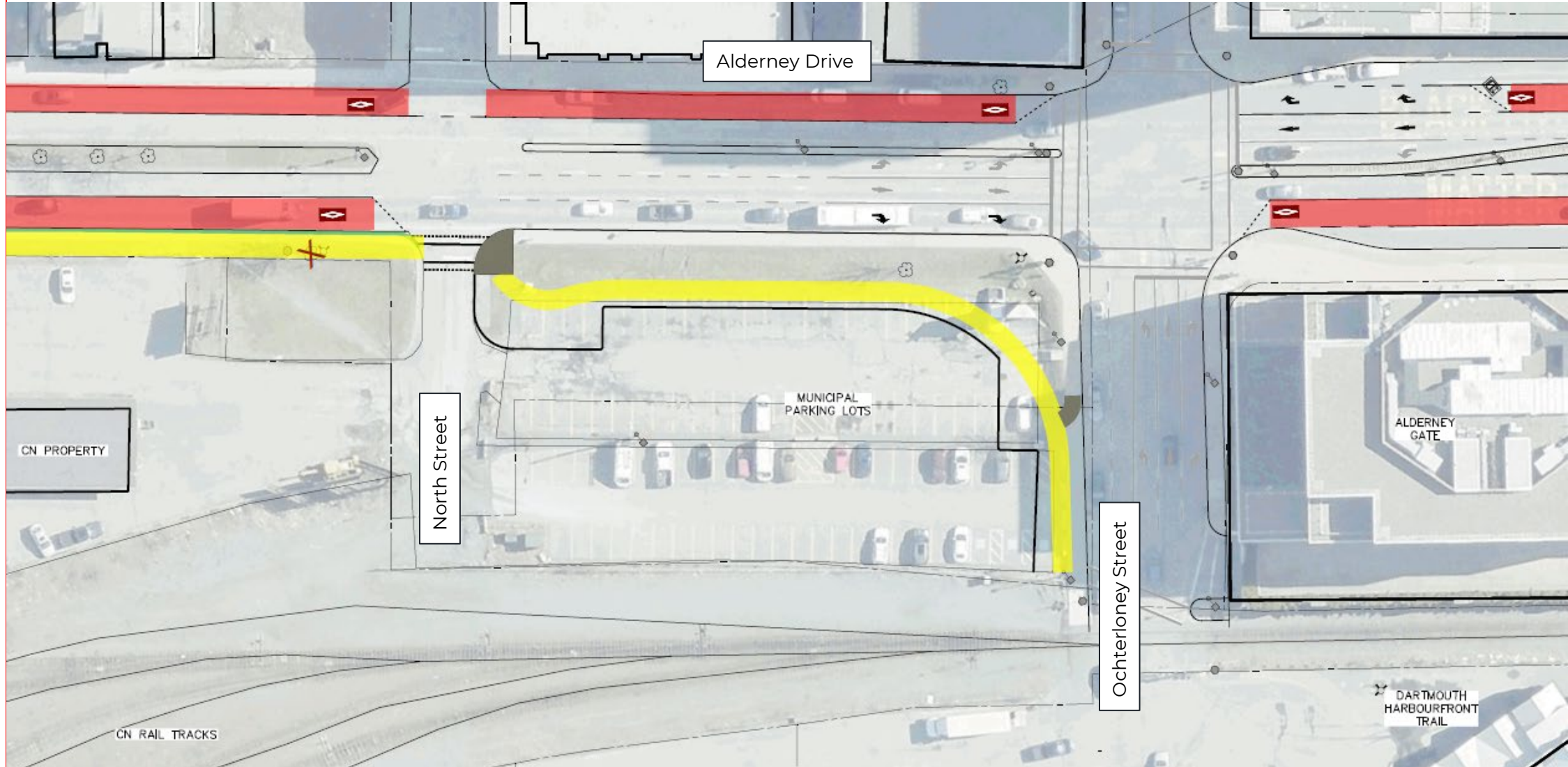
Concept Options

Concept B – Transit and MUP



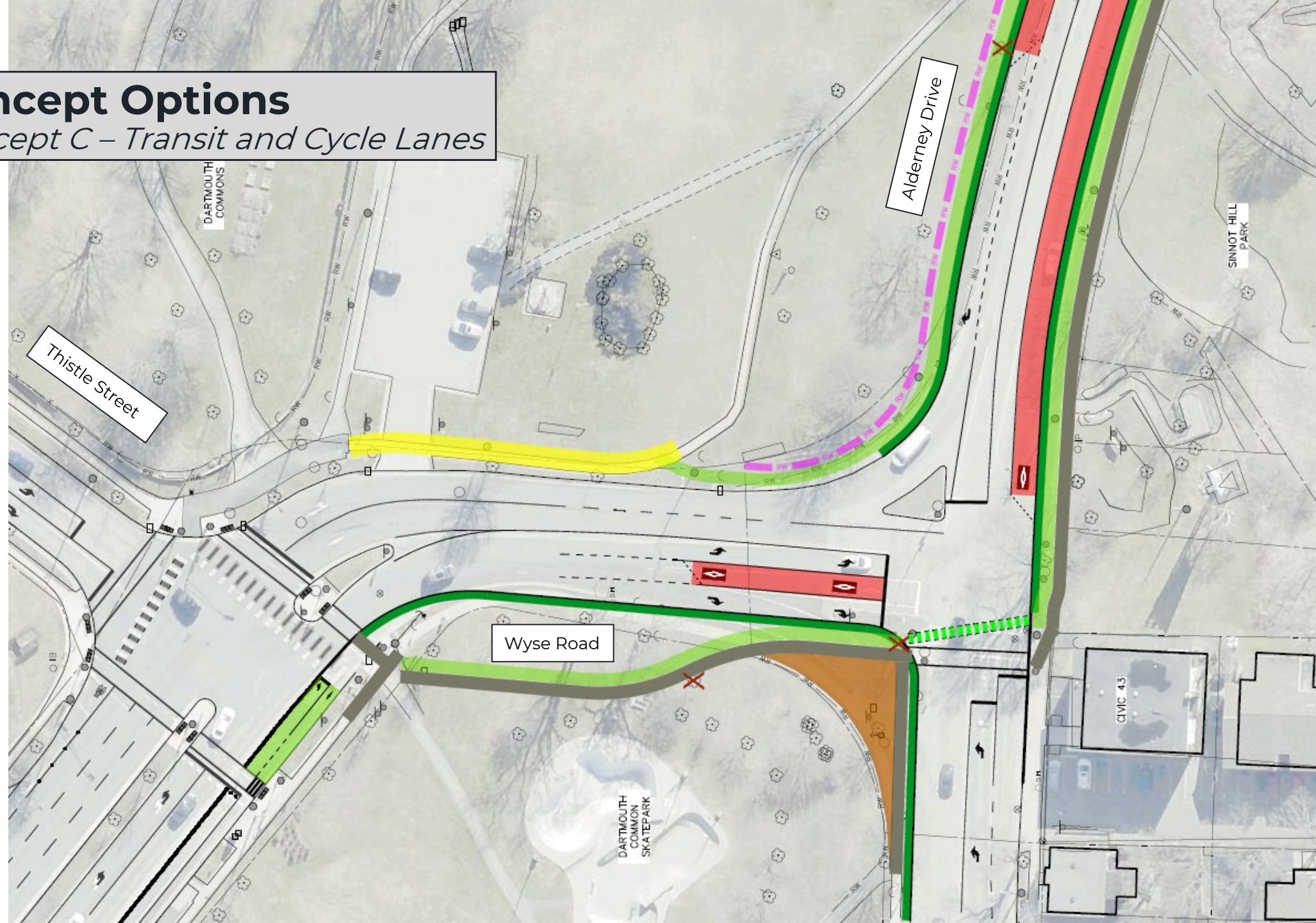
Concept Options

Concept B – Transit and MUP



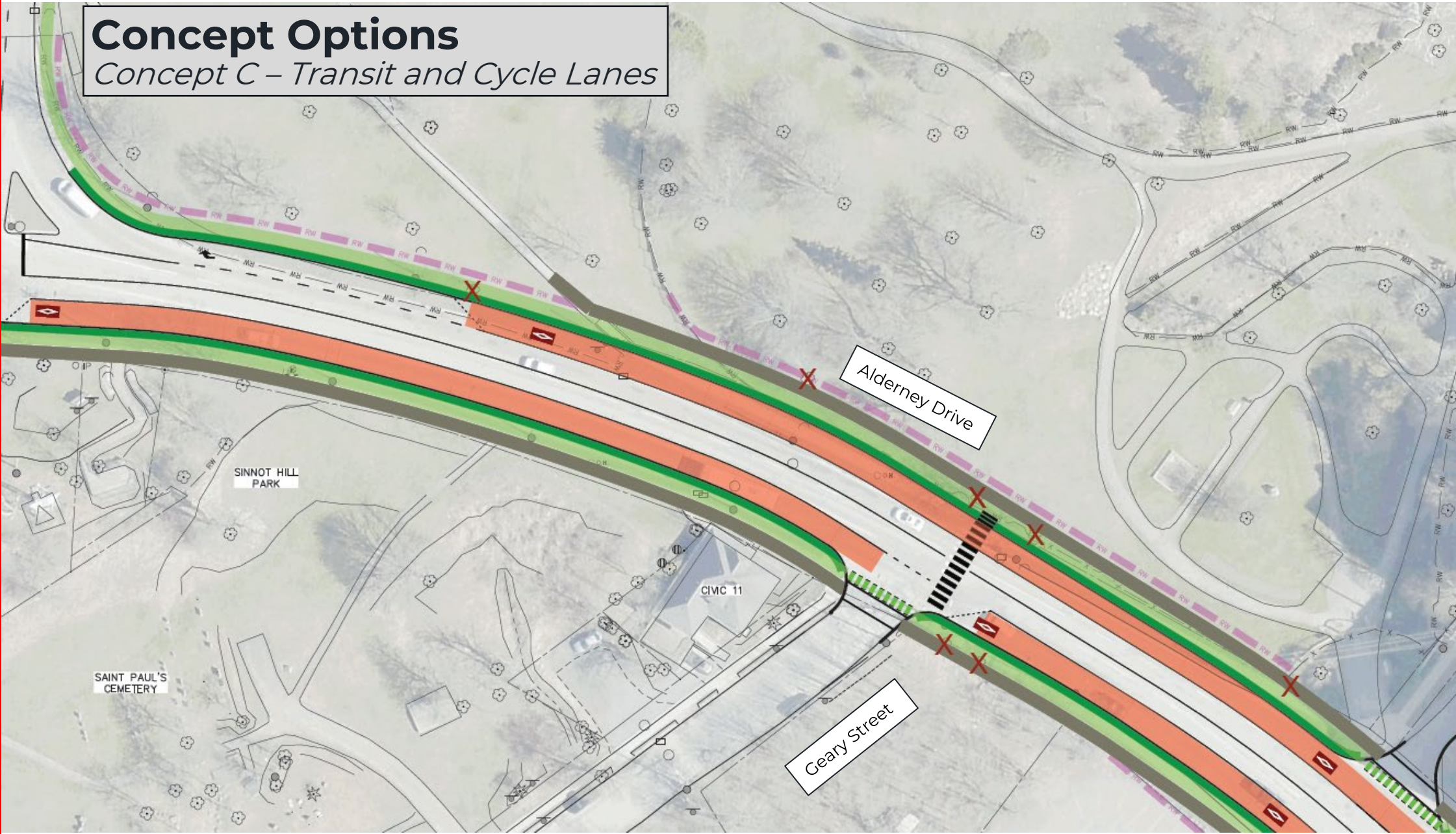
Concept Options

Concept C – Transit and Cycle Lanes



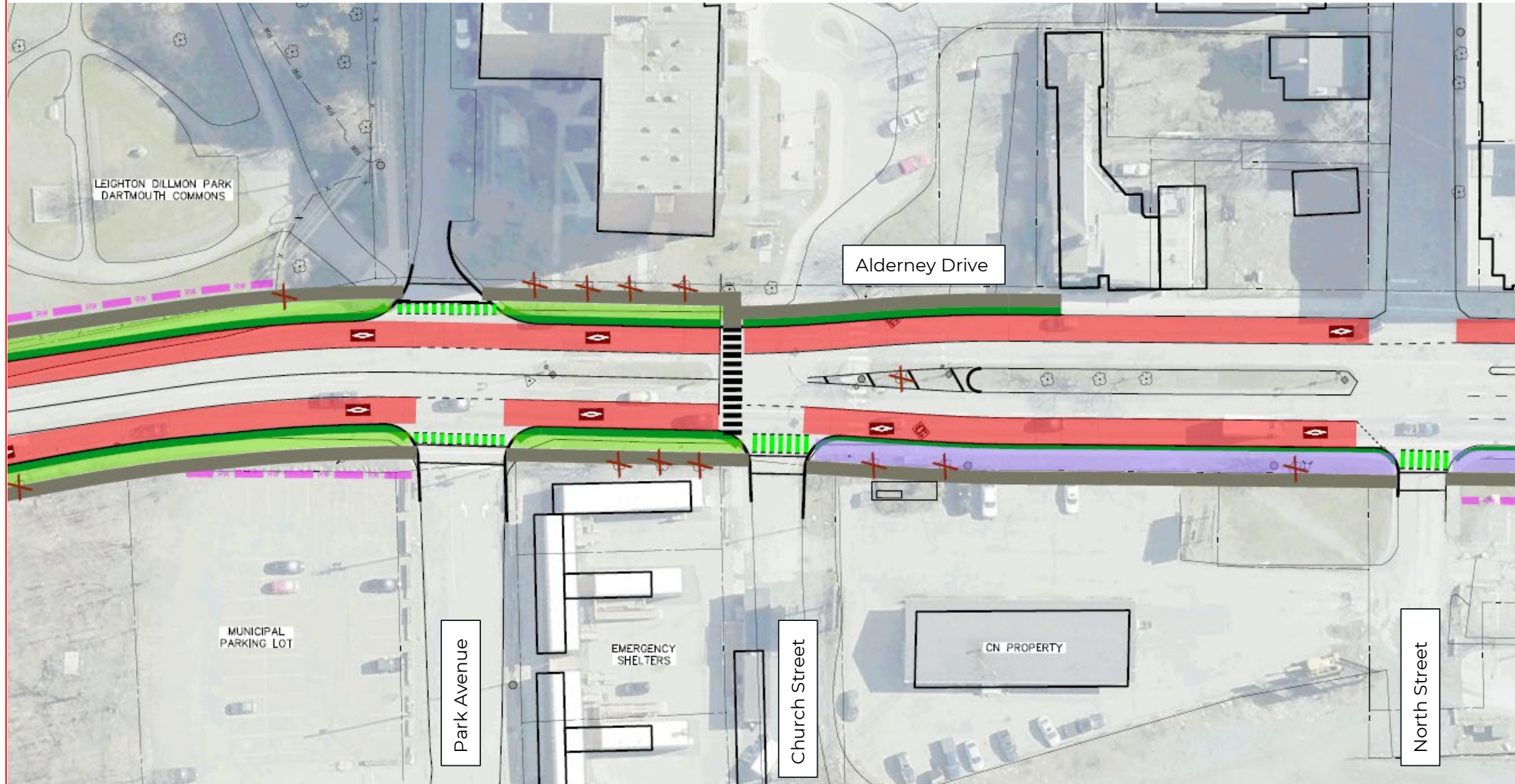
Concept Options

Concept C – Transit and Cycle Lanes



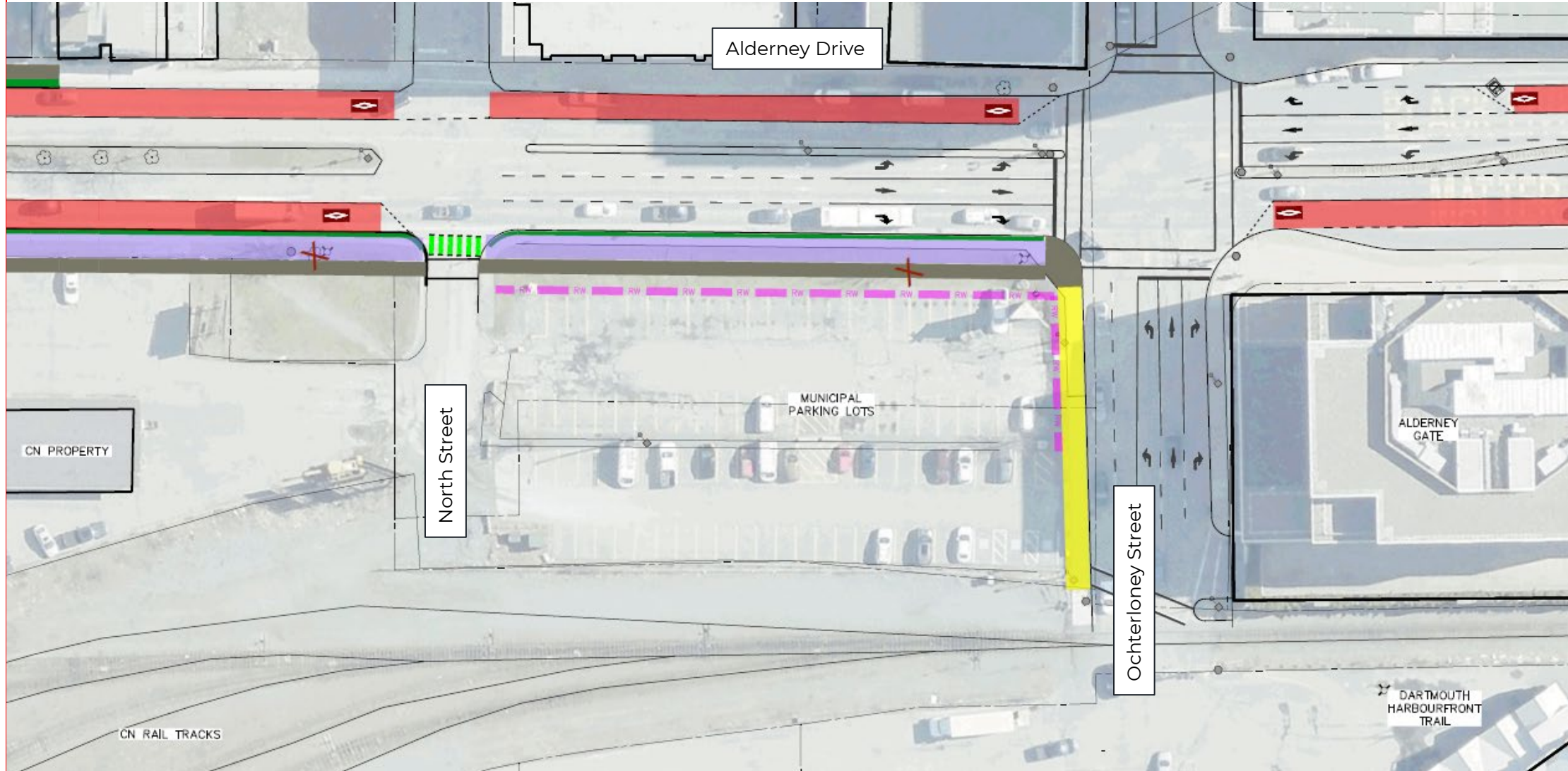
Concept Options

Concept C – Transit and Cycle Lanes



Concept Options

Concept C – Transit and Cycle Lanes





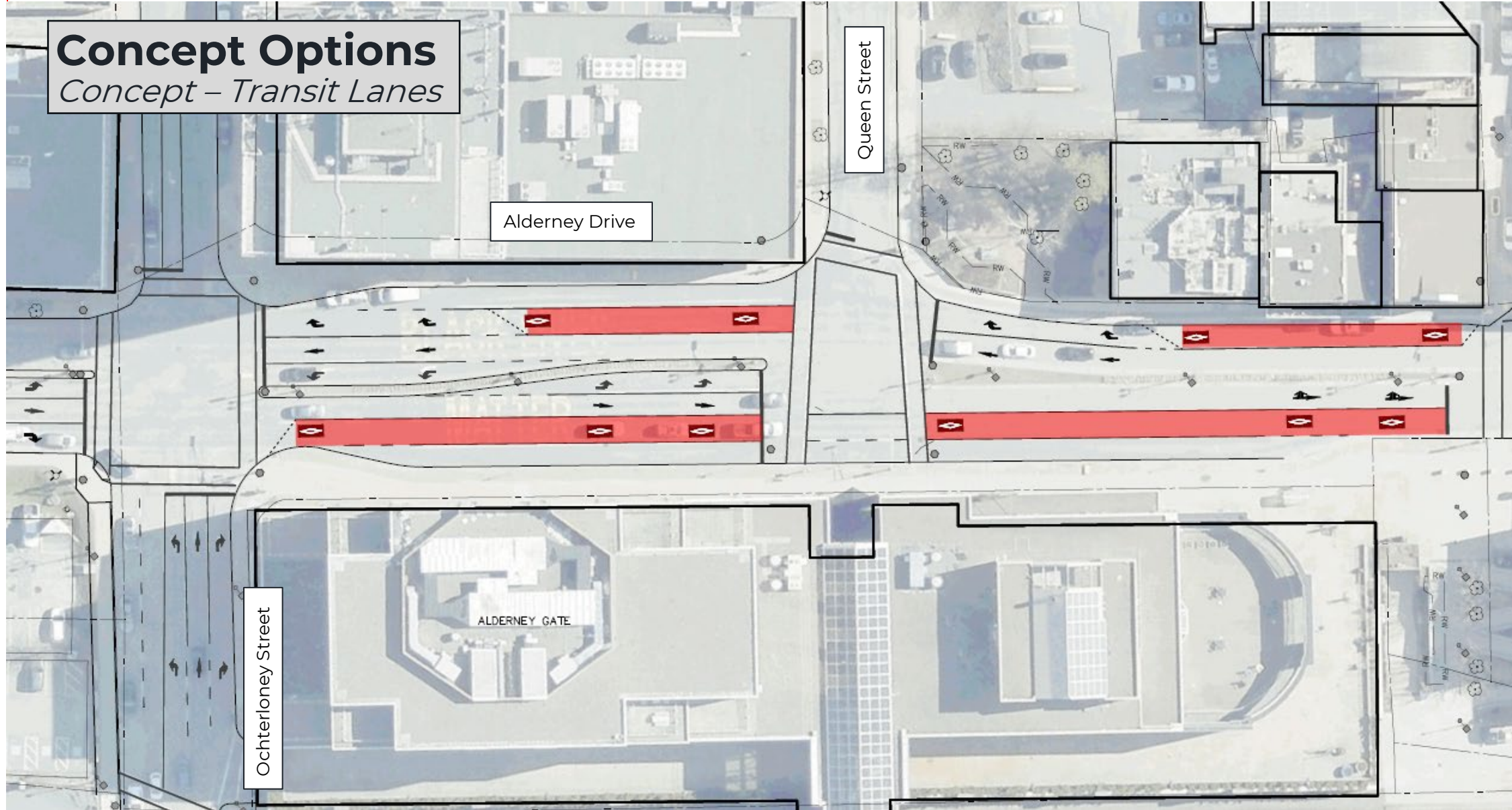
Project
Introduction

Existing
Conditions

Concept
Discussion

Next Steps

CONCEPT DISCUSSION – Ochterloney to PAPA





Project
Introduction

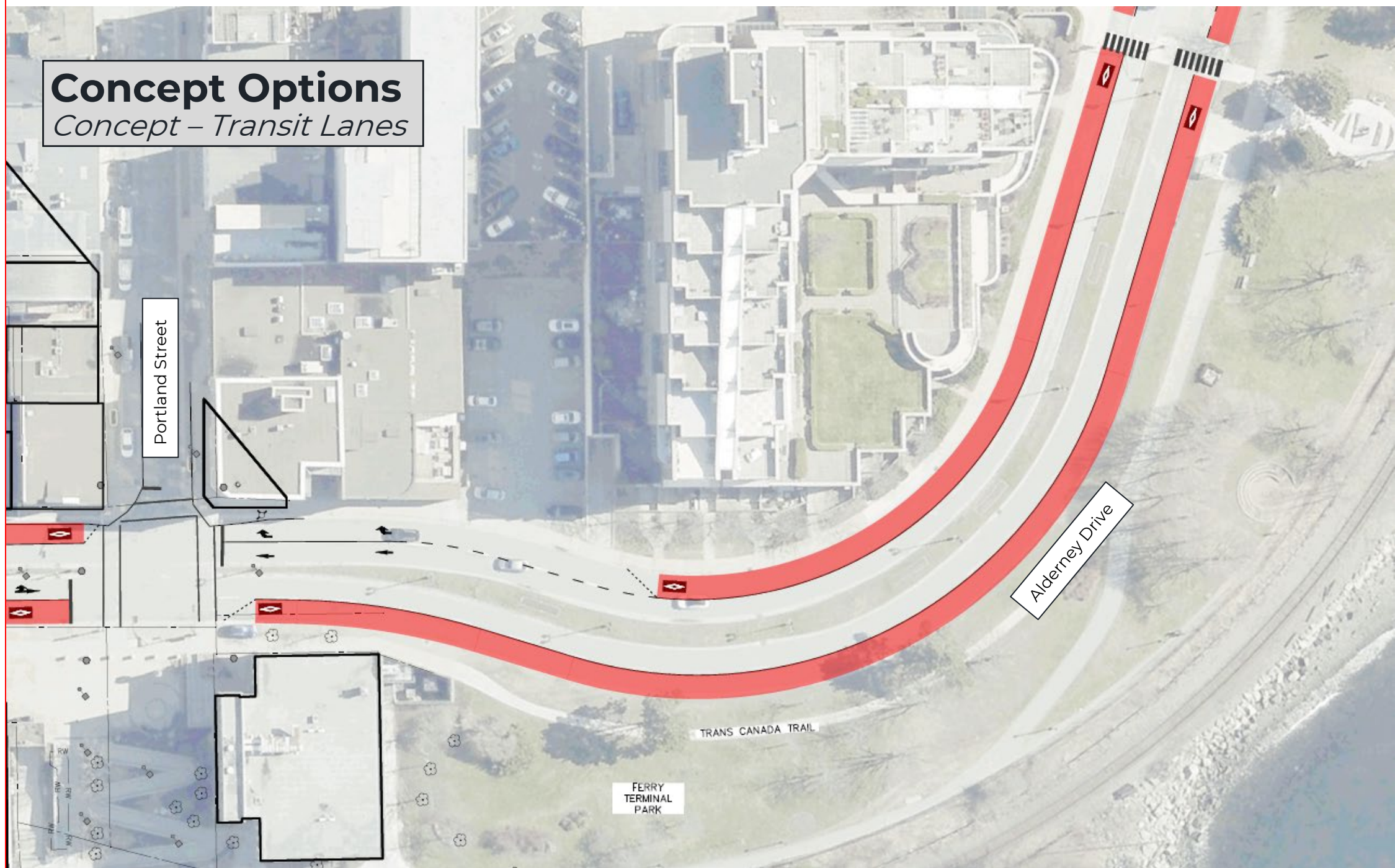
Existing
Conditions

Concept
Discussion

Next Steps

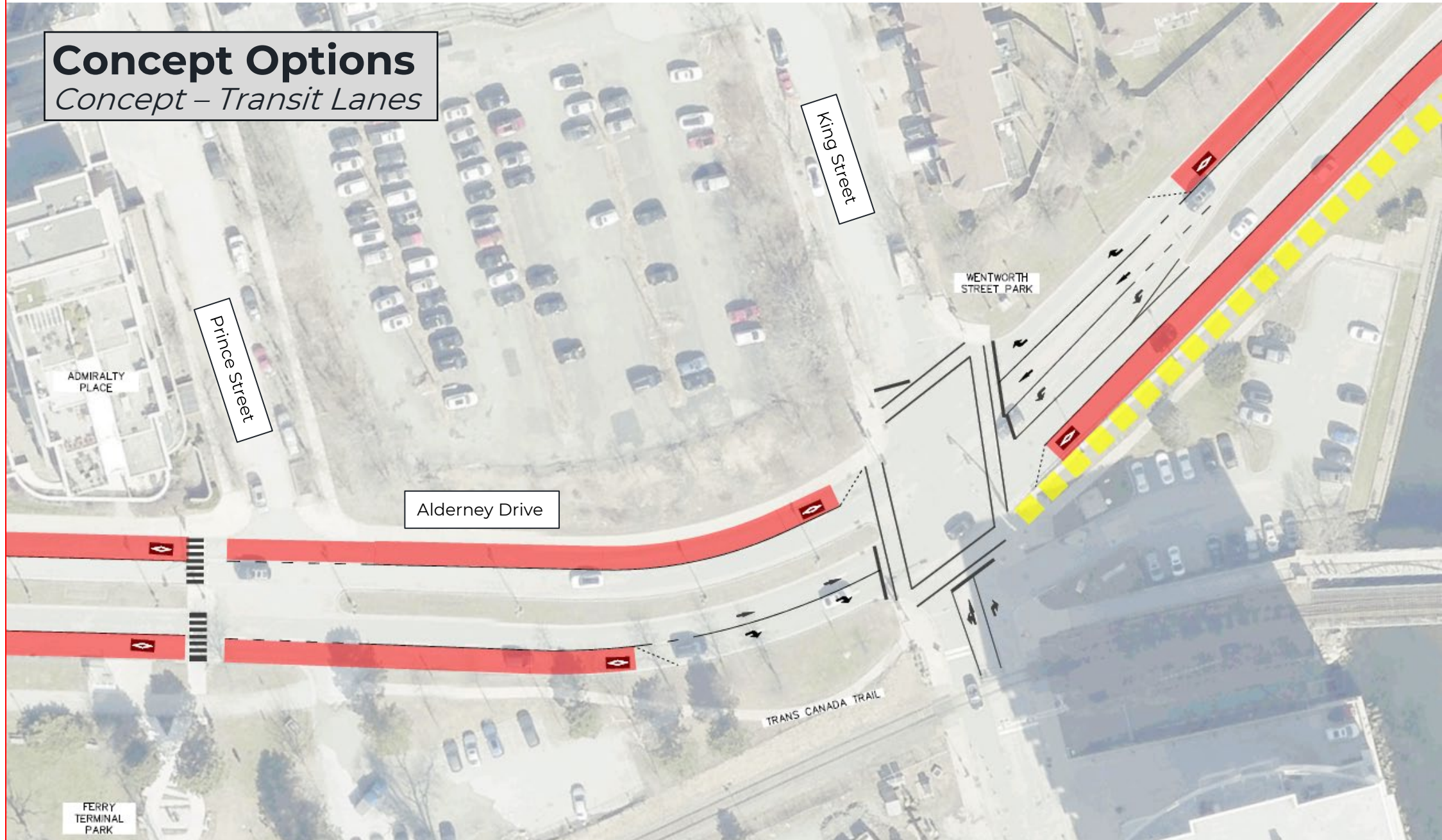
Concept Options

Concept – Transit Lanes



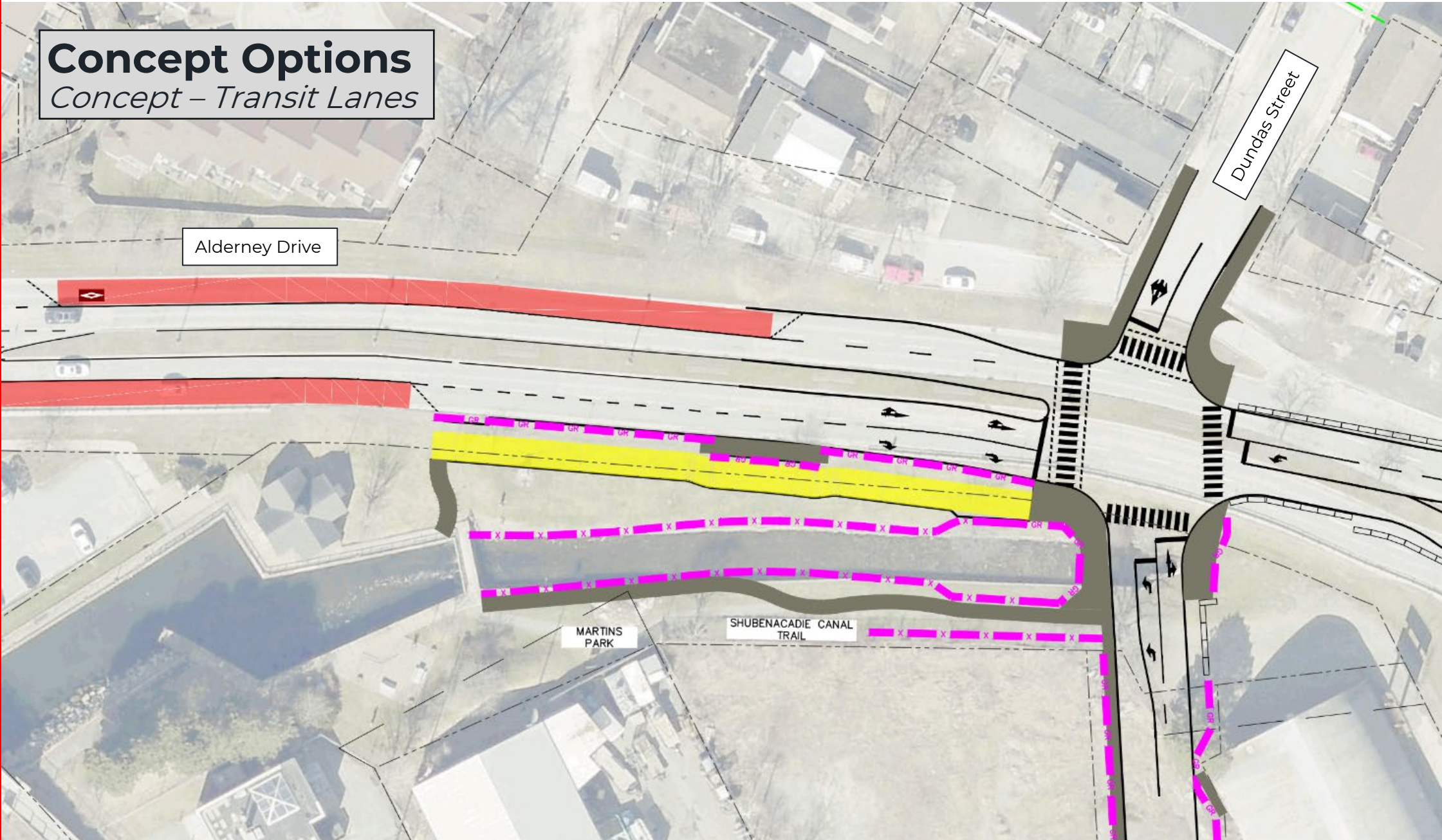
Concept Options

Concept – Transit Lanes



Concept Options

Concept – Transit Lanes





Project
Introduction

Existing
Conditions

Concept
Discussion

Next Steps

PUBLIC ENGAGEMENT

Public Engagement



Public Engagement Sessions

Wednesday, July 17th and Monday, July 22nd, 2024
Zatzman Sportsplex from 6:00 pm – 8:00 pm

Approximately 40 attendees from the neighborhood and surrounding communities

Many comments received



Shape Your City - Survey

Survey is open from July 17th – August 23rd

www.shapeyourcityhalifax.ca/alderney-drive



Stakeholder Site Walkthrough - Scheduled

Monday, August 26th and Wednesday, August 28th, 2024

1:30 pm – 3:30 pm

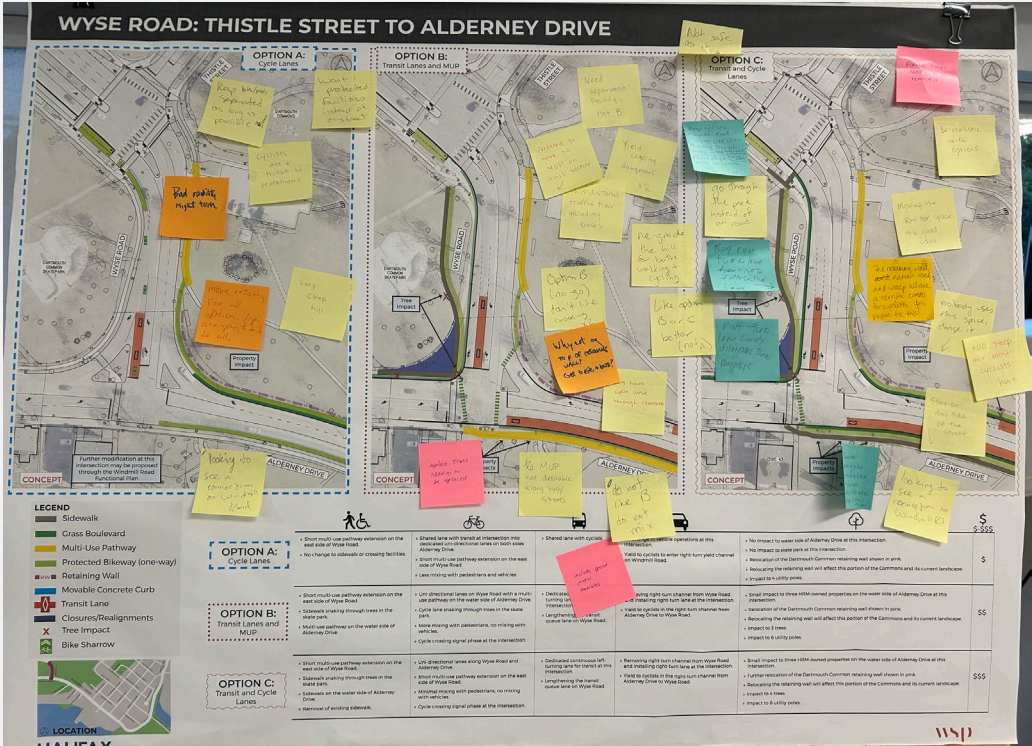
Consider congestion during events

Prioritize transit to move the most people

Keep cyclists and pedestrians separate

Build for the future

Option C



Public Engagement



Shape Your City Survey – Preliminary Feedback

Get rid of parking along Alderney Drive

Concern about impact on Dartmouth Common retaining wall and mature trees

Keep Lyle and Shore as an option for cyclists

Do not reduce the number of lanes

Better cycling connections to Ochterloney and Portland Street

SURVEY RESPONSE REPORT

10 July 2024 - 08 August 2024

PROJECT NAME:

Alderney Drive Functional Plan - Phase One (Active Transportation & Transit)



Project
Introduction

Existing
Conditions

Concept
Discussion

Next Steps

NEXT STEPS

Next Steps

Project Introduction

Existing Conditions

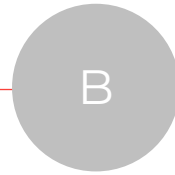
Concept Discussion

Next Steps



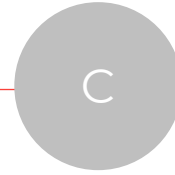
Project Initiation – December 2022

- ✓ Host Kick-Off meeting (December 7)
- ✓ Conduct site visit (December 14)



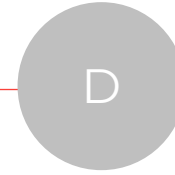
Existing Conditions – January 2023

- ✓ Prepare base plan drawing
- ✓ Prepare draft Existing Conditions Memo
- ✓ Submit final Existing Conditions Report



Initial Concept Design – February 2023

- ✓ Prepare plan view drawings
- ✓ Prepare typical cross sections
- ✓ Prepare intersection drawings



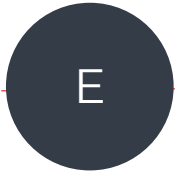
Updated Concept Design – June 2024

- ✓ Prepare plan view drawings
- ✓ Prepare typical cross sections
- ✓ Prepare intersection drawings




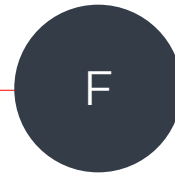
Project Reinitiation and Scope Change – February 2024

Next Steps



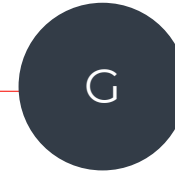
Public & Stakeholder Engagement – August 2024

- ✓ Prepare public engagement materials
 - ✓ Launch and host public engagement activities & events
 - ✓ Engage with community advocacy groups
- 
- Present at AAC and ATAC
 - Prepare draft WWH Report
 - Submit Final WWH Report



Evaluation – September 2024

- Establish a list of evaluation criteria
- Evaluate the concepts
- Prepare draft Options Evaluation Summary Report
- Submit final Options Evaluation Summary Report



Functional Design & Report – October 2024

- Develop 30% design drawings
- Prepare Class 'C' cost estimate
- Prepare draft Functional Plan Report
- Submit final Functional Plan Report

Finished

Thank You

