



August 19, 2024

# Alderney Drive Functional Plan: Phase 1

AAC Meeting



# Meeting Goals

- 1 WSP to provide an overview of the Project
- 2 Review the work that has been completed so far
- 3 Review the Intersection Concept Options and discuss public feedback
- 4 AAC to provide feedback/comments on revised Intersection Concept Options
- 5 Inform AAC that the Survey is open from July 17<sup>th</sup> – August 23<sup>rd</sup>  
[www.shapeyourcityhalifax.ca/alderney-drive](http://www.shapeyourcityhalifax.ca/alderney-drive)



Project  
Introduction

Existing  
Conditions

Concept  
Discussion

Next Steps

# PROJECT INTRODUCTION

# Project Objective

The objective of the project is to develop an Alderney Drive functional plan for a transit corridor between Wyse Road and Prince Albert Road and all ages and abilities (AAA) active transportation route between the Dartmouth Harbourfront Trail (ending at Alderney Gate) to the protected bike lanes on Wyse Road at the intersection with Thistle Street.



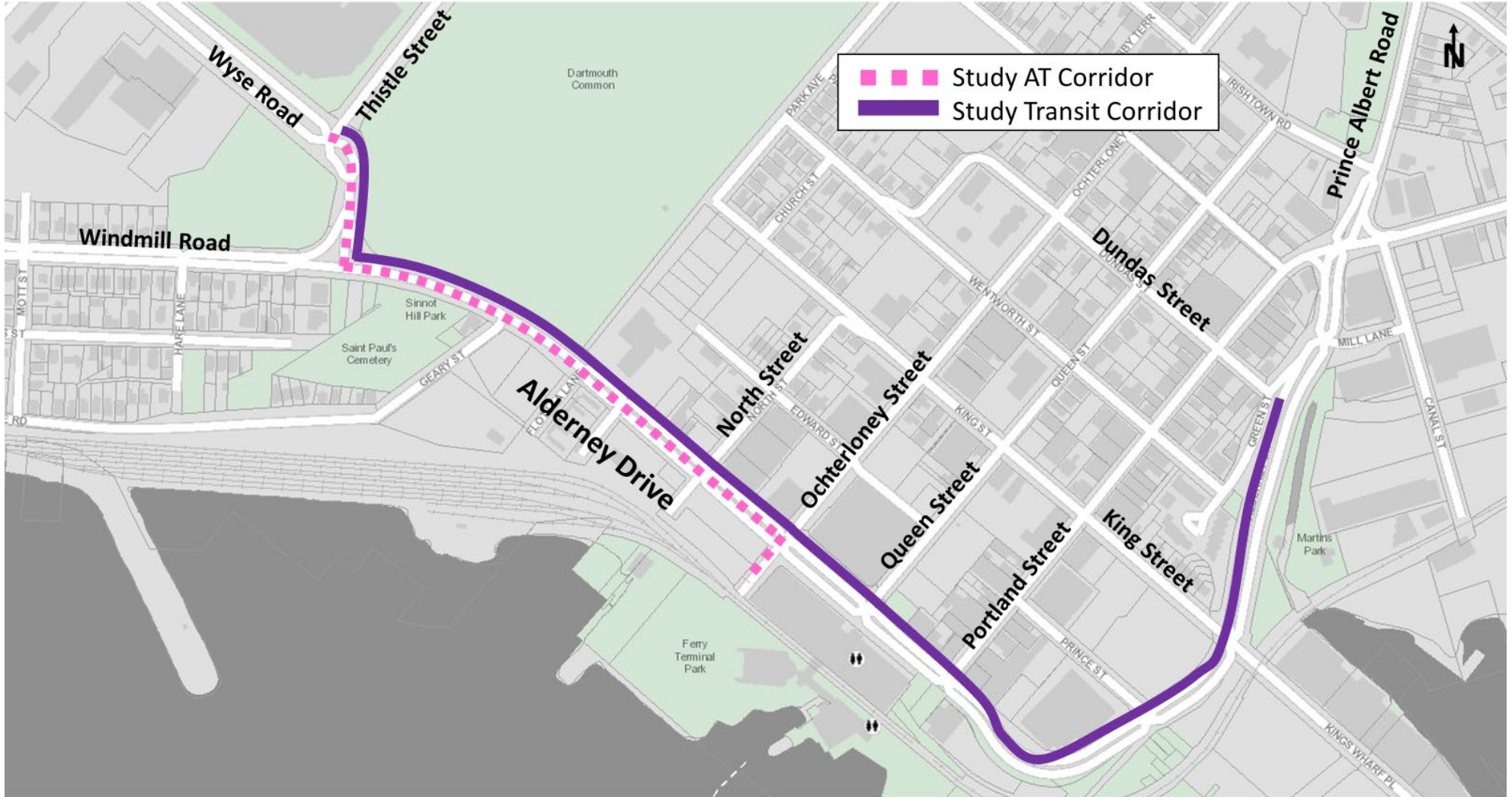
# Project Objective

Project Introduction

Existing Conditions

Concept Discussion

Next Steps



## Municipal Guidance

- 1 Integrated Mobility Plan (IMP)
  - Established a vision to provide residents with a choice of connected, healthy, affordable, sustainable travel options for moving both people and goods, through integrated transportation and land-use planning.
  - Identified the need to establish an AAA bicycle network in the Regional Centre of HRM.
  - AAA bicycle network includes the Alderney Gate to Wyse Road bikeway corridor with connections to the Dartmouth Harbourfront Trail, the Lyle-Shore Local Street Bikeway, the Wyse Road protected bike lanes and the Dartmouth Common Greenway.
  - Developed a Rapid Transit Strategy for faster, better-connected, more frequent, and easier-to-use transit service.

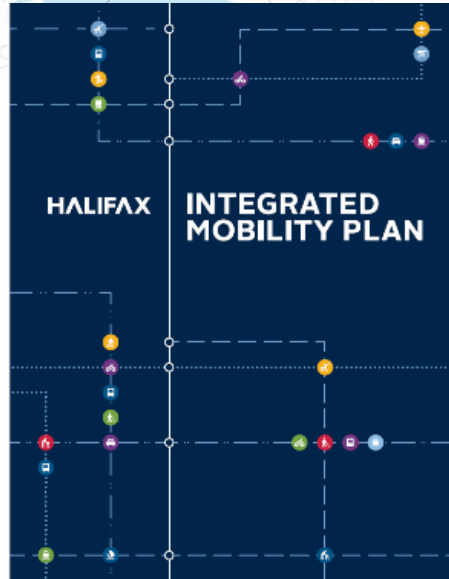
# Municipal Guidance

Project Introduction

Existing Conditions

Concept Discussion

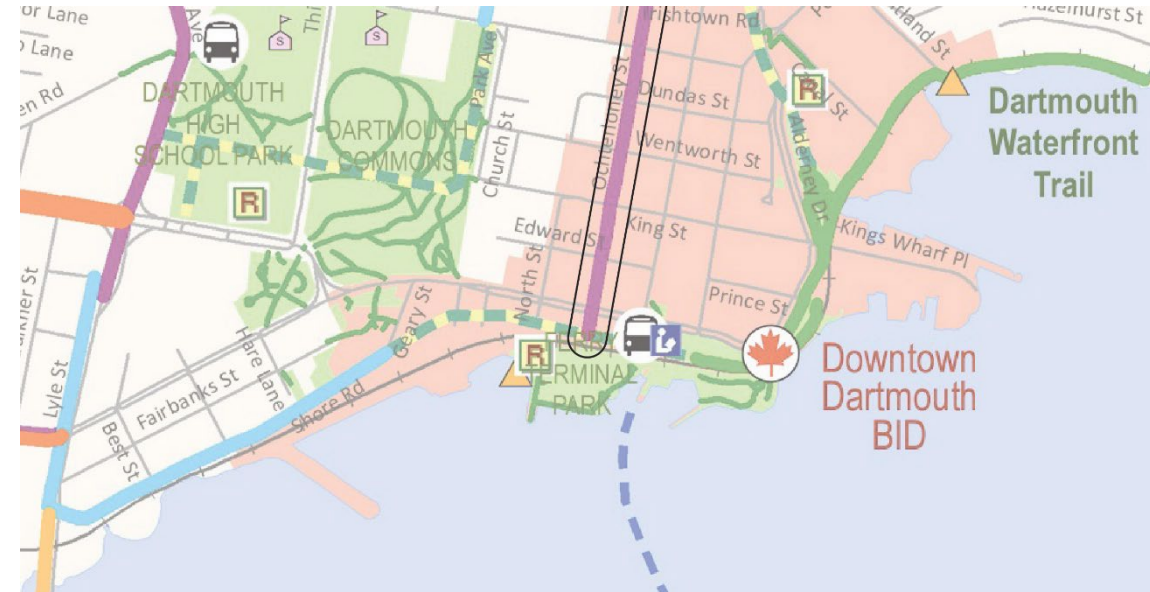
Next Steps



## Municipal Guidance






### 2 Active Transportation (AT) Priorities Plan

- Set municipal priorities to double the number of trips made on foot and by bike by 2026.
- Identified the additional connection to the Ochterloney Street candidate Bike Route.










# Project Scope

- A** Initiate project
  - Host Kick-Off Meeting
  - Conduct site visit
  
- B** Establish existing conditions of the project study area
  - Prepare base plan drawing 
  - Prepare Existing Conditions Report 
  
- C** Develop up to three conceptual AAA active transportation designs for the study corridor
  - Prepare plan view drawings 
  - Prepare typical cross sections 
  - Prepare intersection drawings 

## Project Scope

- > **D** Conduct public and stakeholder engagement
- Prepare for and host stakeholder and public engagement
  - Prepare What We Heard Report 

- E** Evaluate the conceptual bikeway designs
- Establish a list of evaluation criteria
  - Evaluate the concept design
  - Prepare Options Evaluation Summary Report 

- F** Prepare functional design and report
- Develop 30% design drawings 
  - Prepare Class 'C' cost estimate 
  - Prepare Functional Plan Report 



Project  
Introduction

Existing  
Conditions

Concept  
Discussion

Next Steps

# EXISTING CONDITIONS

# Traffic Control

Project Introduction

Existing Conditions

Concept Discussion

Next Steps



## LEGEND



Signalized Intersection



RRFB Crossing



RA-5 Crossing



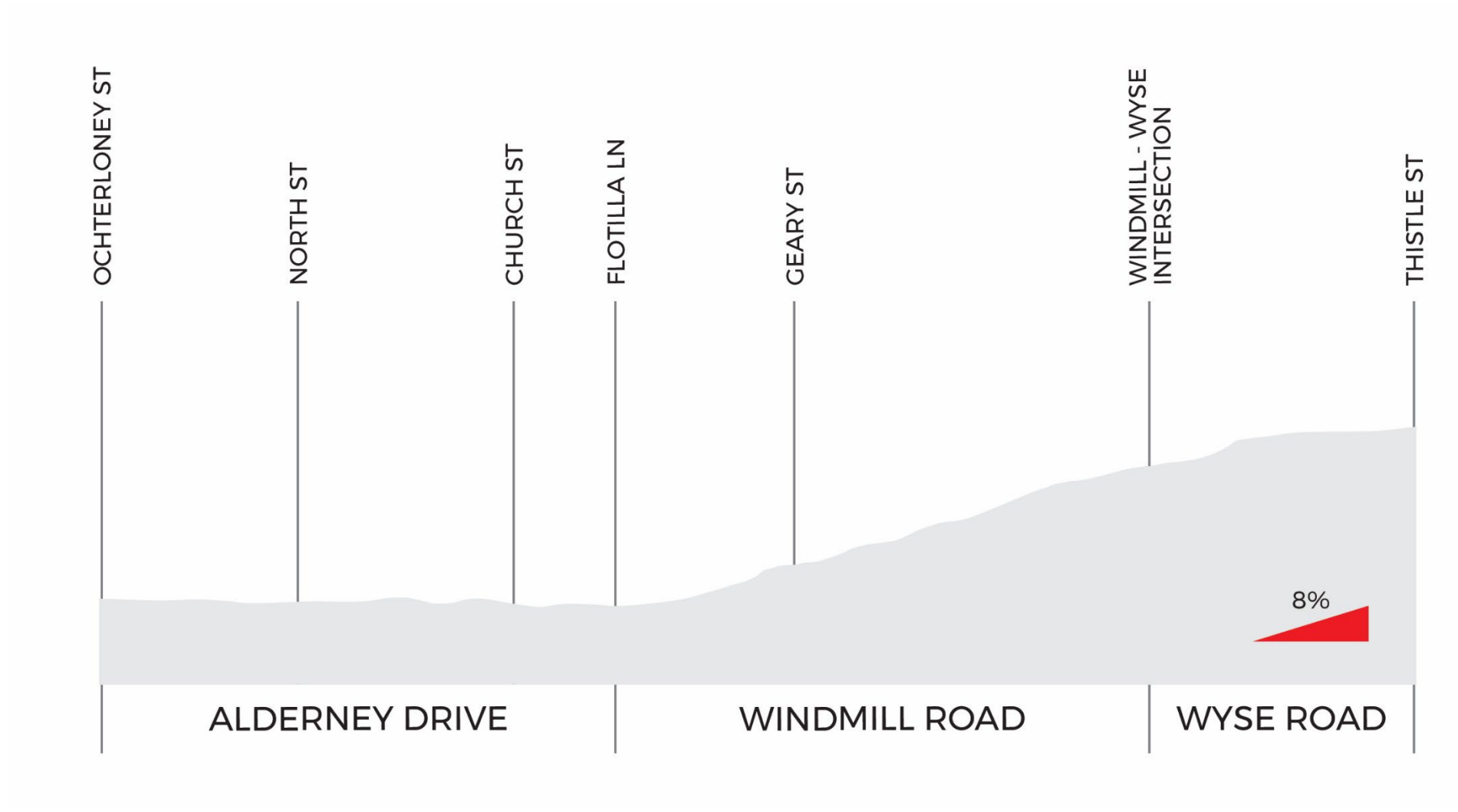
# Grade

Project Introduction

Existing Conditions

Concept Discussion

Next Steps



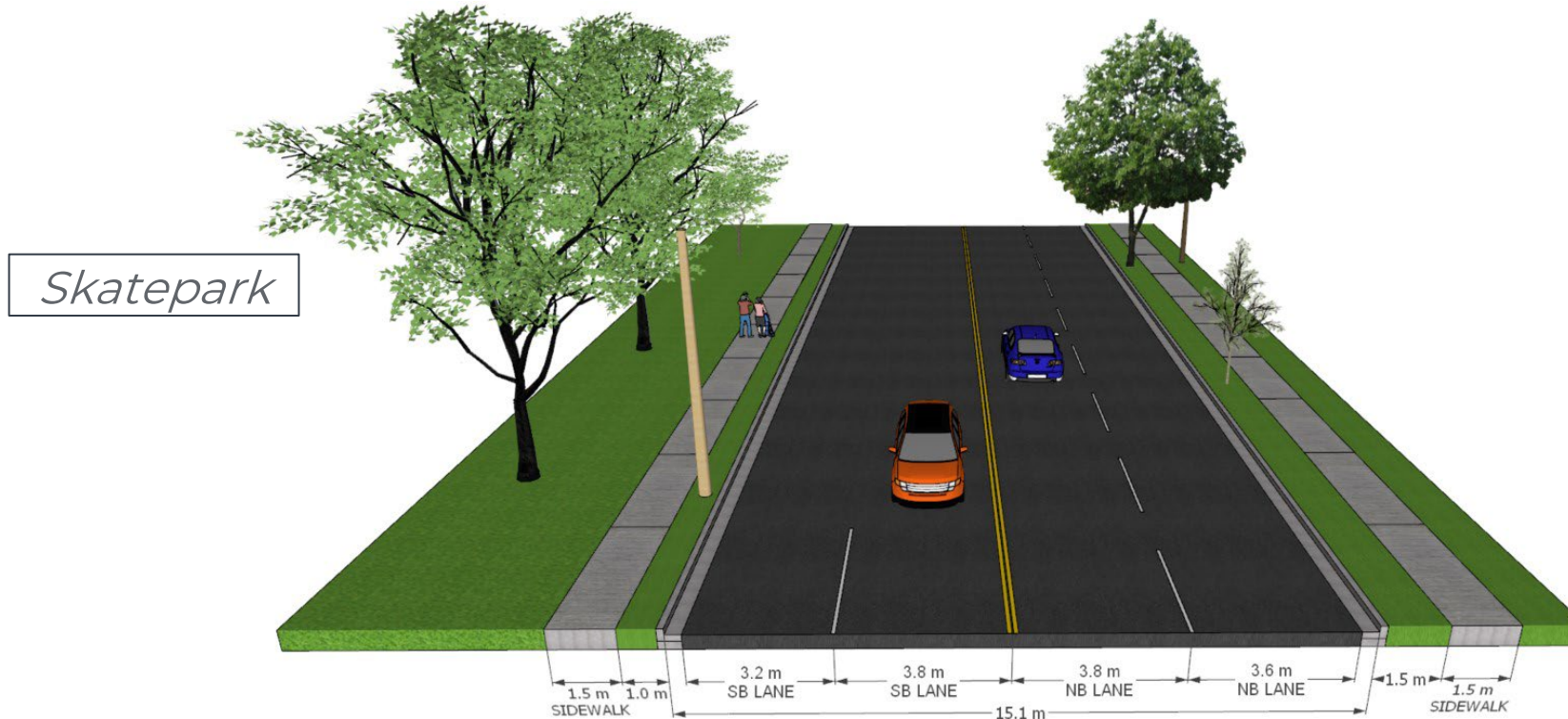
# Cross Section Locations





## Wyse Road

Wyse Road, between Thistle Street and Windmill Road, is a 3-lane arterial roadway with a southbound left transit queue-jump lane and a right turn channel on the approach to the signalized intersection with Windmill Road. Wyse Road is designated as a day-time truck route and facilitates the movement of buses for many transit routes to and from both the Bridge Terminal and Alderney Terminal. The statutory speed limit is 50km/hr.

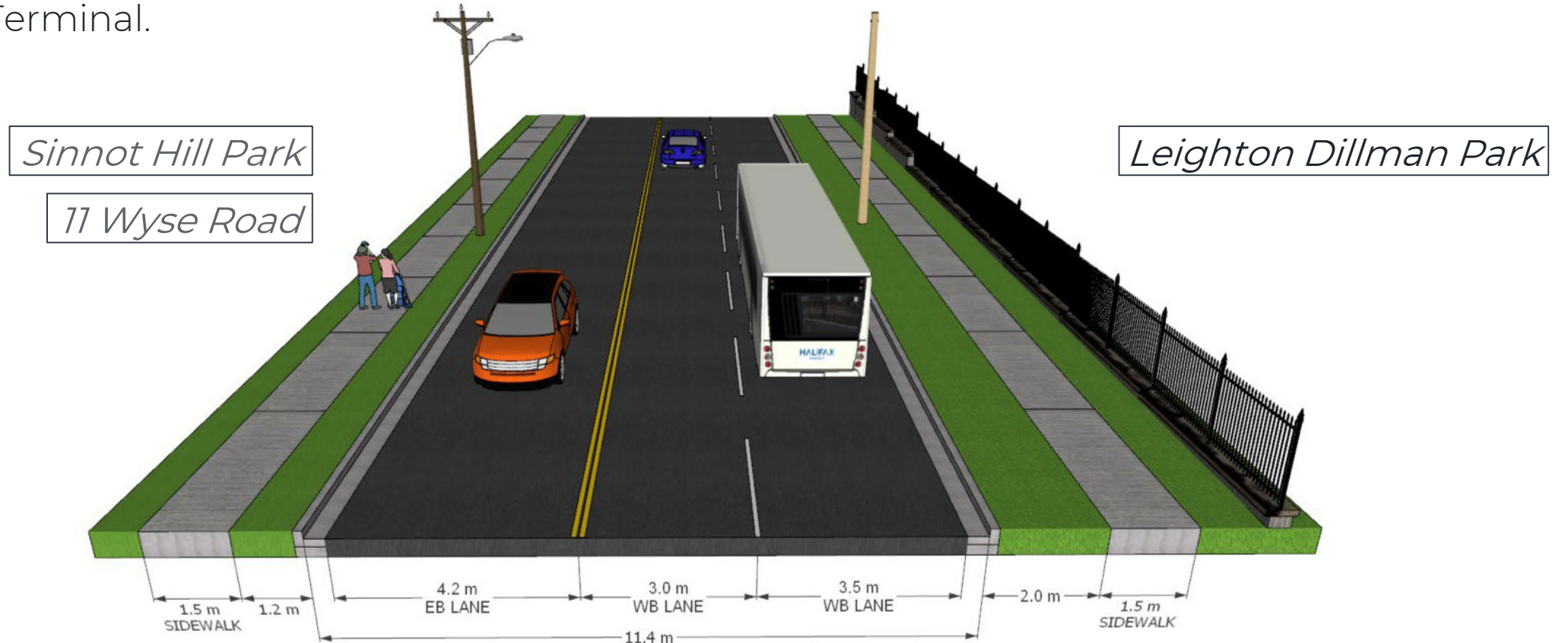






# Windmill Road

Windmill Road, to the east of the intersection with Wyse Road, is a 3-lane arterial roadway with a statutory speed limit of 50km/h. Within the project study area, Windmill Road is designated as a day-time truck route and facilitates the movement of buses for many transit routes to and from both the Bridge Terminal and Alderney Terminal.



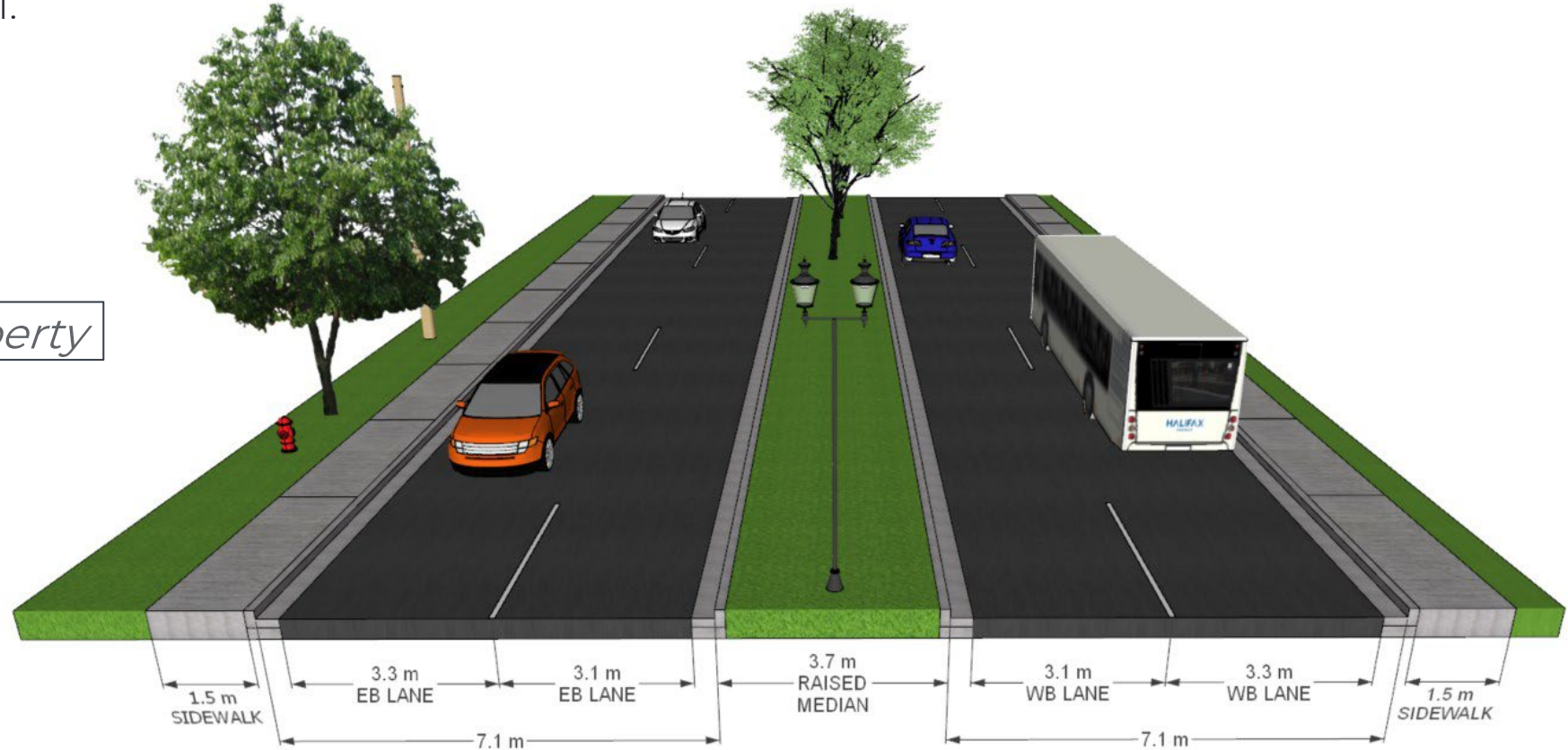


# Alderney Drive

Alderney Drive, between Flotilla Lane and Ochterloney Street, is a 4-lane arterial roadway with a raised centre median and statutory speed limit of 50km/h. Alderney Drive is designated as a day-time truck route and facilitates the movement of buses for many transit routes to and from both the Bridge Terminal and Alderney Terminal.



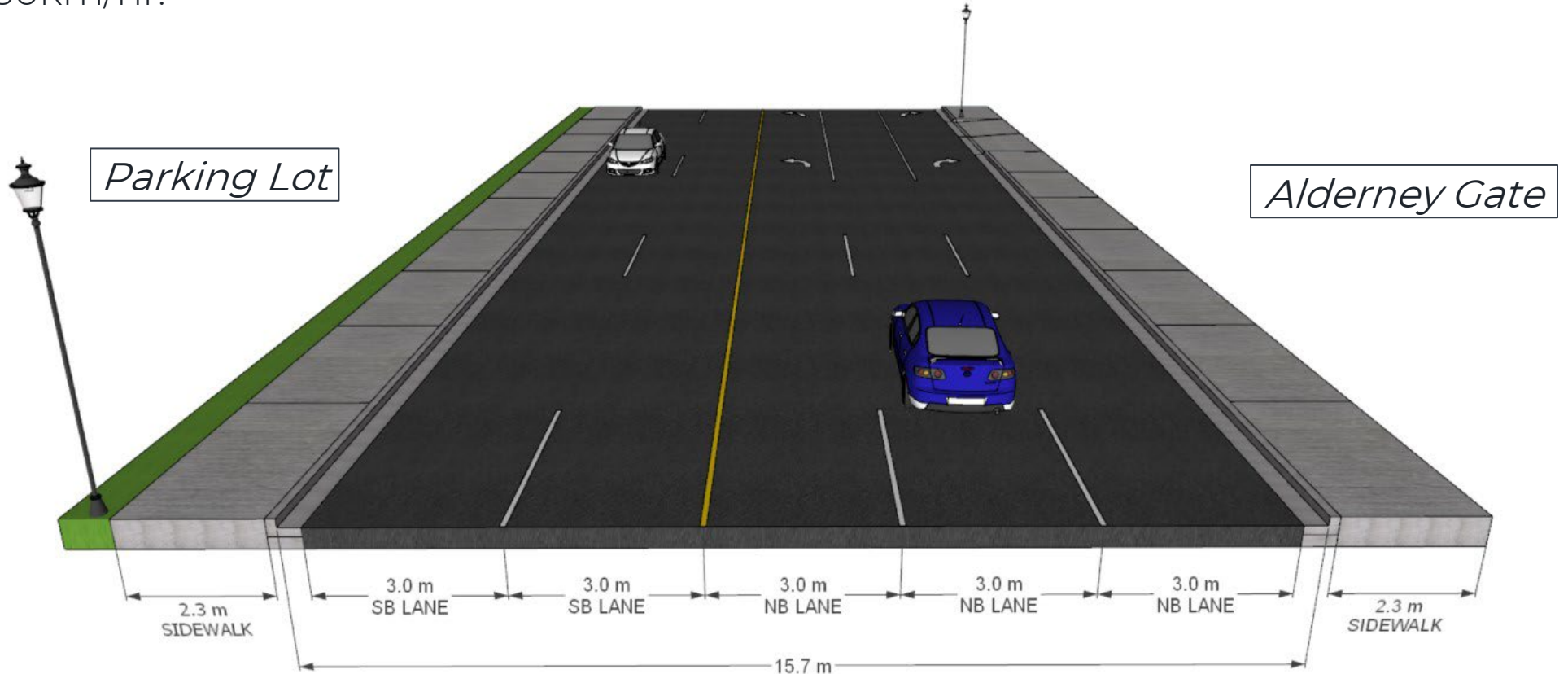
CN Property





# Ochterloney Street

Ochterloney Street, between Alderney Drive and the Dartmouth Harbourfront Trail, is a short 3-lane local street with a northbound left turn lane and a right turn lane approaching the signalized intersection with Alderney Drive. The statutory speed limit is 50km/hr.



# Bicycle Network

Project Introduction

Existing Conditions

Concept Discussion

Next Steps



## LEGEND

Existing Protected Bikeway

Existing Greenway

Proposed Greenway

Proposed Local Street Bikeway

Bikeway Desired (Type TBD)

1 Wyse Road Protected Bike Lanes

2 Macdonald Bridge Bikeway

3 Nantucket Avenue Multi-Use Pathway

4 Dartmouth Common Greenway

5 Dartmouth Harbourfront Trail



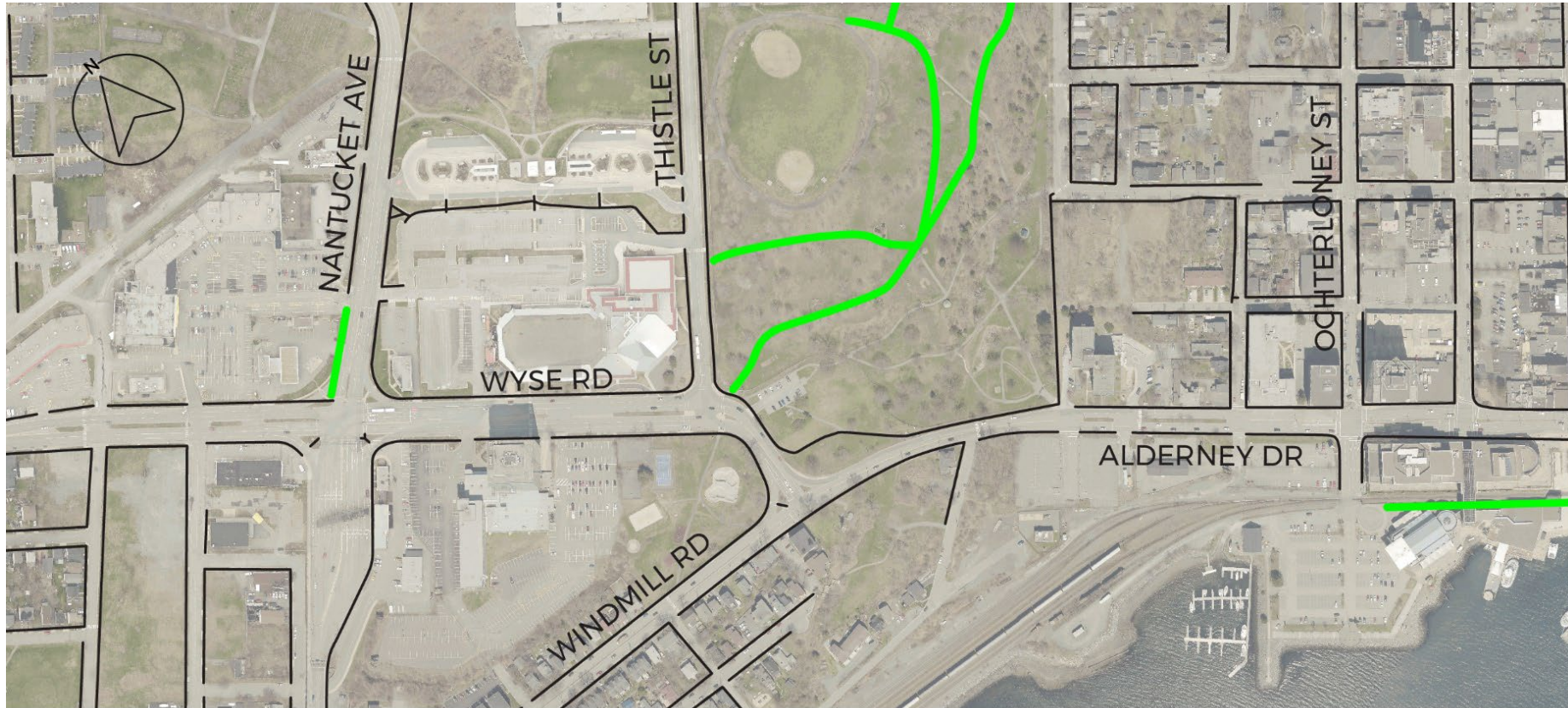
# Core Pedestrian Network

Project  
Introduction

Existing  
Conditions

Concept  
Discussion

Next Steps



## LEGEND

- Existing Sidewalk
- Existing Multi-Use Pathway



# Traffic Volume Data

Project  
Introduction

Existing  
Conditions

Concept  
Discussion

Next Steps

The following eight intersections have been considered in the analysis completed for this functional plan, and turning movement counts were collected in September 2024.

1. Wyse Road and Thistle Street
2. Wyse Road at Windmill Road
3. Alderney Drive and North Street
4. Alderney Drive and Ochterloney Street
5. Alderney Drive and Queen Street
6. Alderney Drive and Portland Street
7. Alderney Drive and King Street
8. Alderney Drive and Portland Street / Prince Albert Road





Project  
Introduction

Existing  
Conditions

Concept  
Discussion

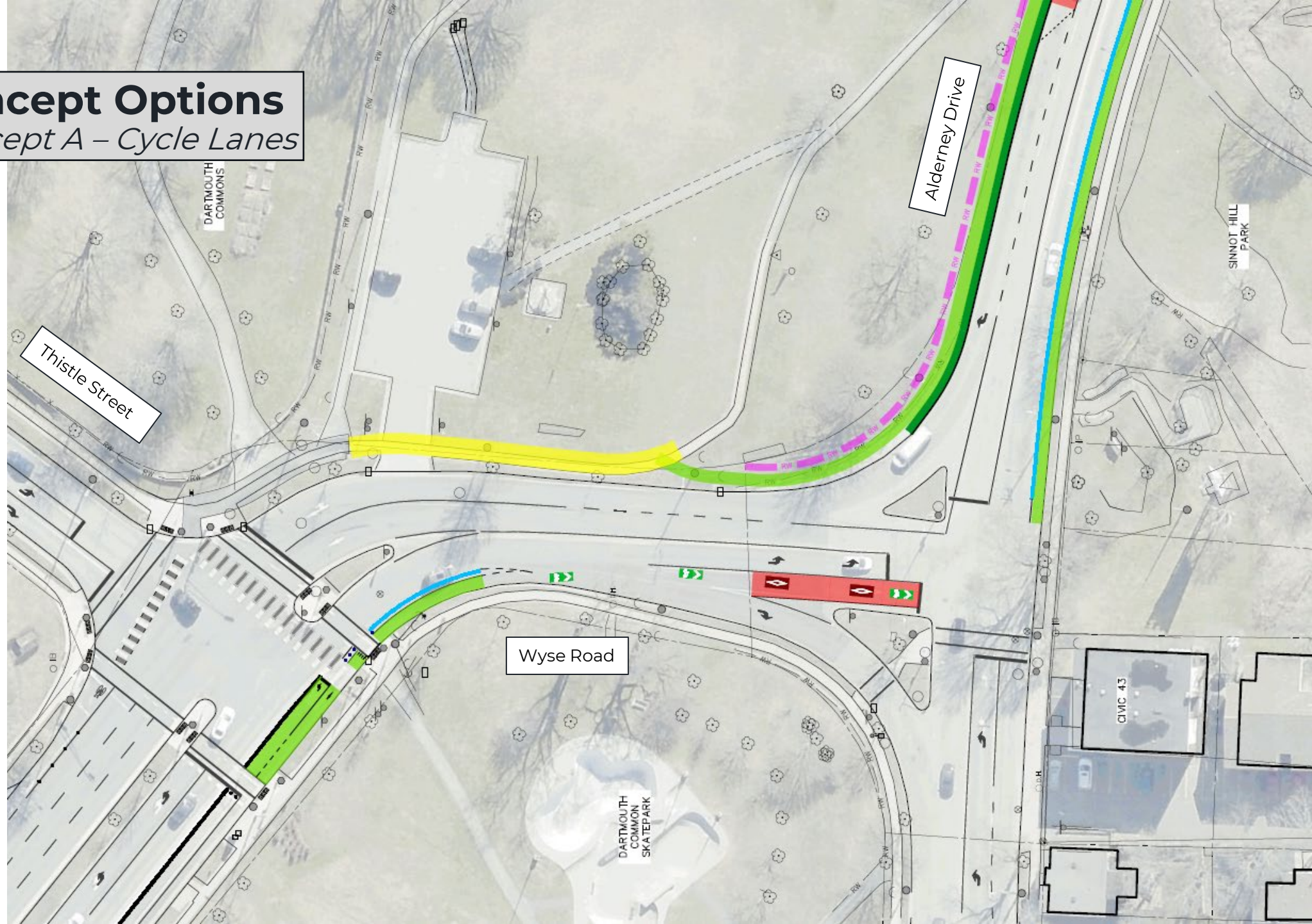
Next Steps

# CONCEPT DISCUSSION – Wyse to Ochterloney



# Concept Options

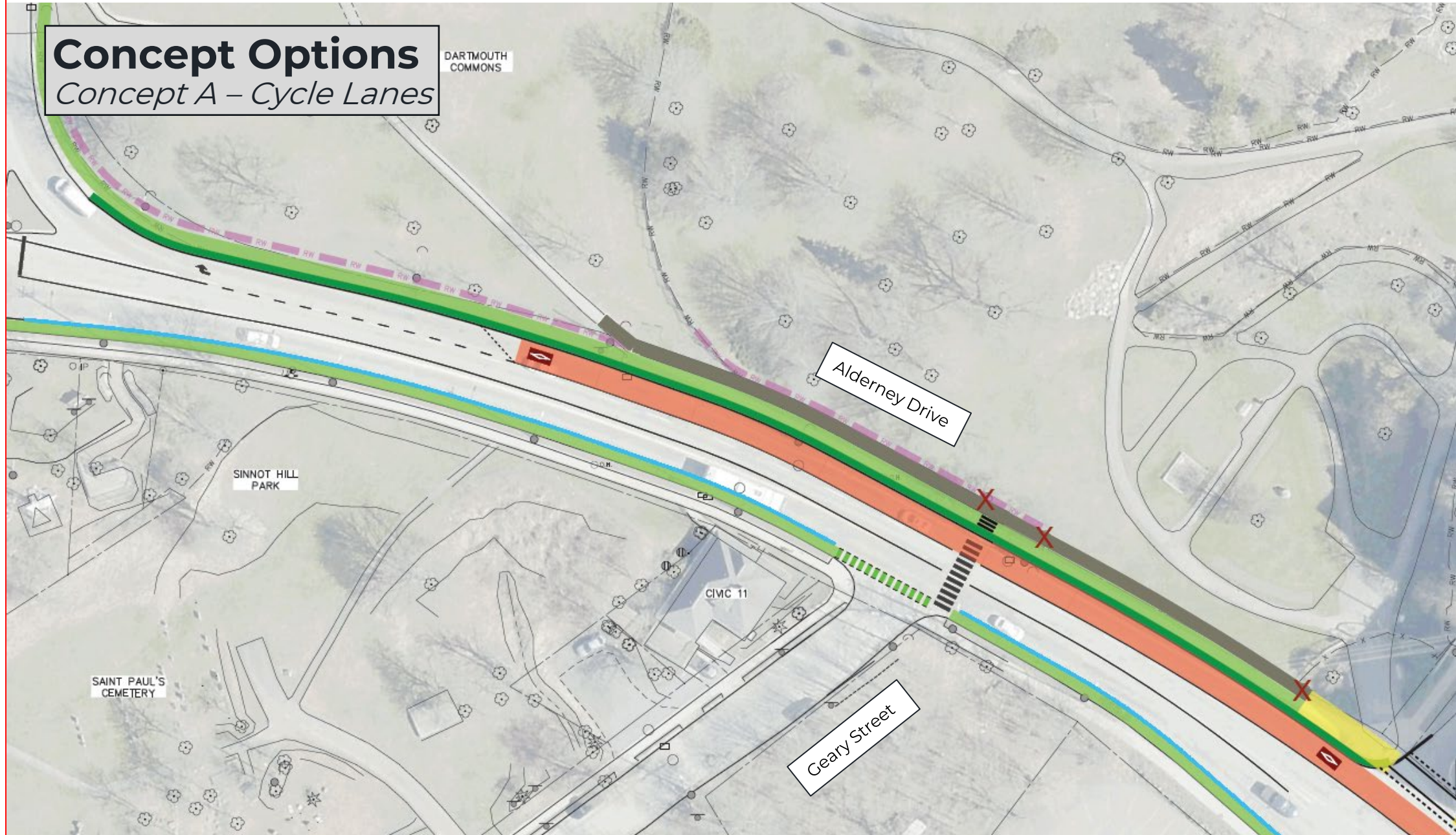
*Concept A – Cycle Lanes*





# Concept Options

*Concept A – Cycle Lanes*





# Concept Options

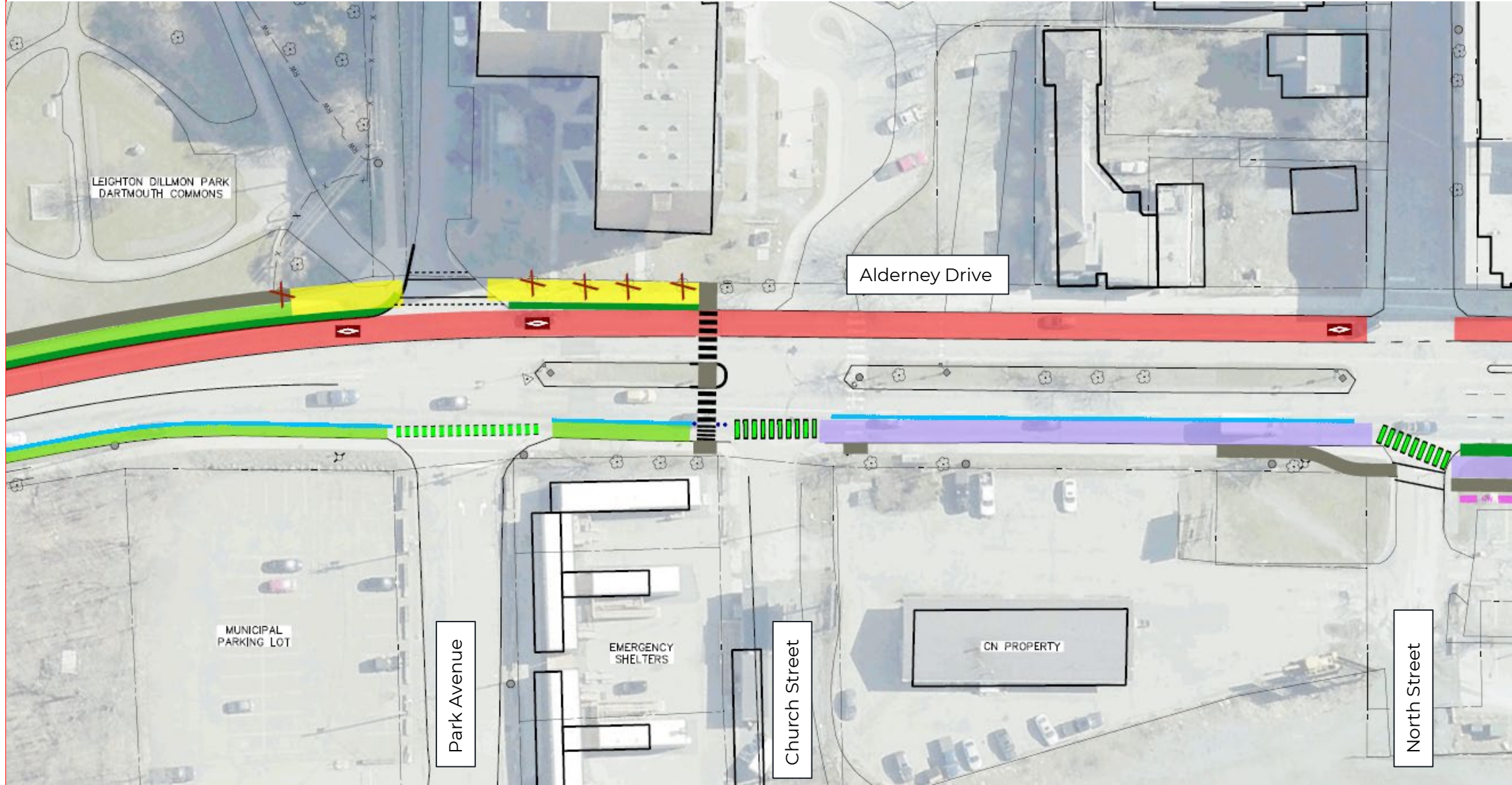
## Concept A – Cycle Lanes

Project Introduction

Existing Conditions

Concept Discussion

Next Steps



# Concept Options

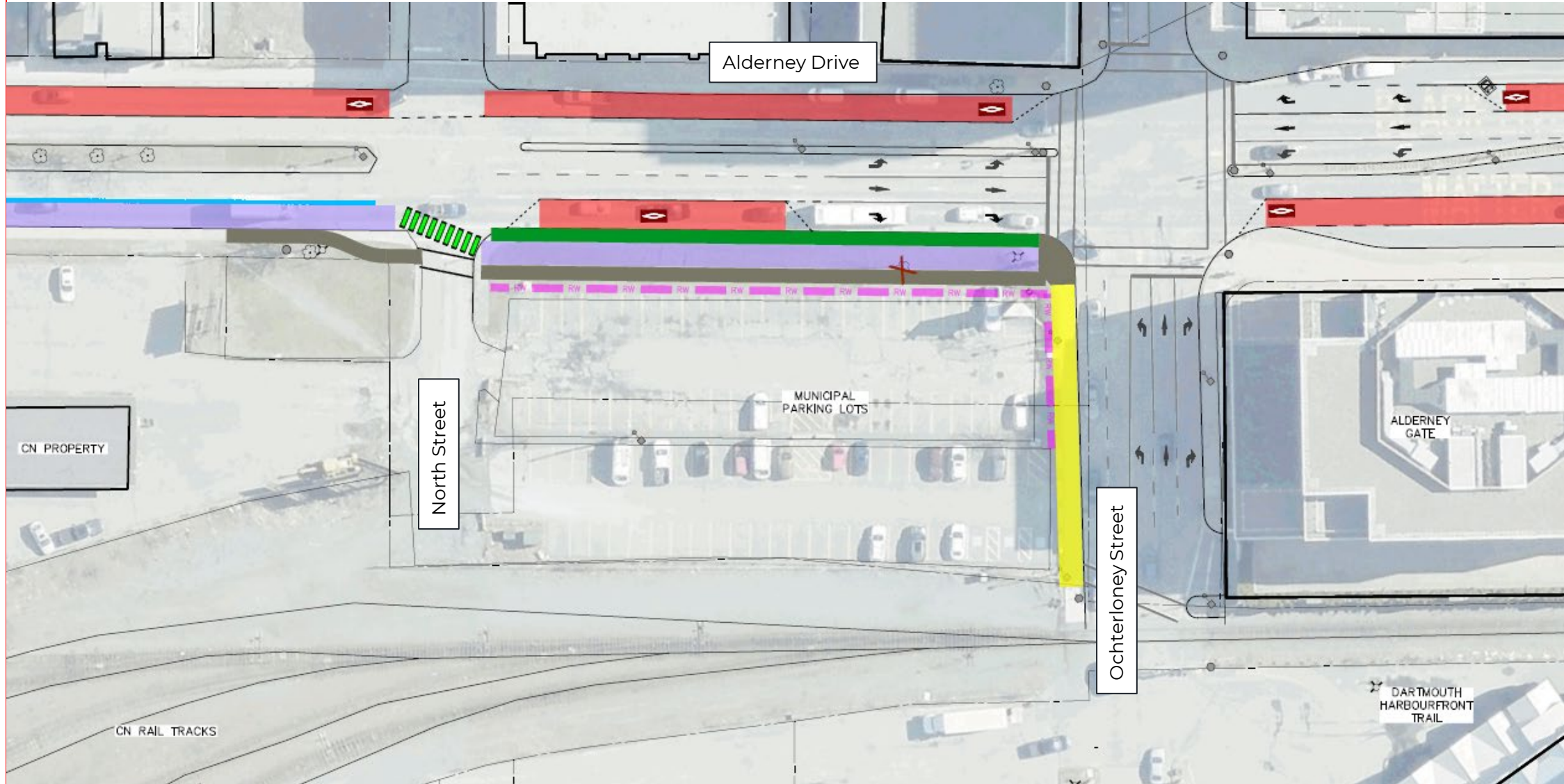
## Concept A – Cycle Lanes

Project Introduction

Existing Conditions

Concept Discussion

Next Steps











Project  
Introduction

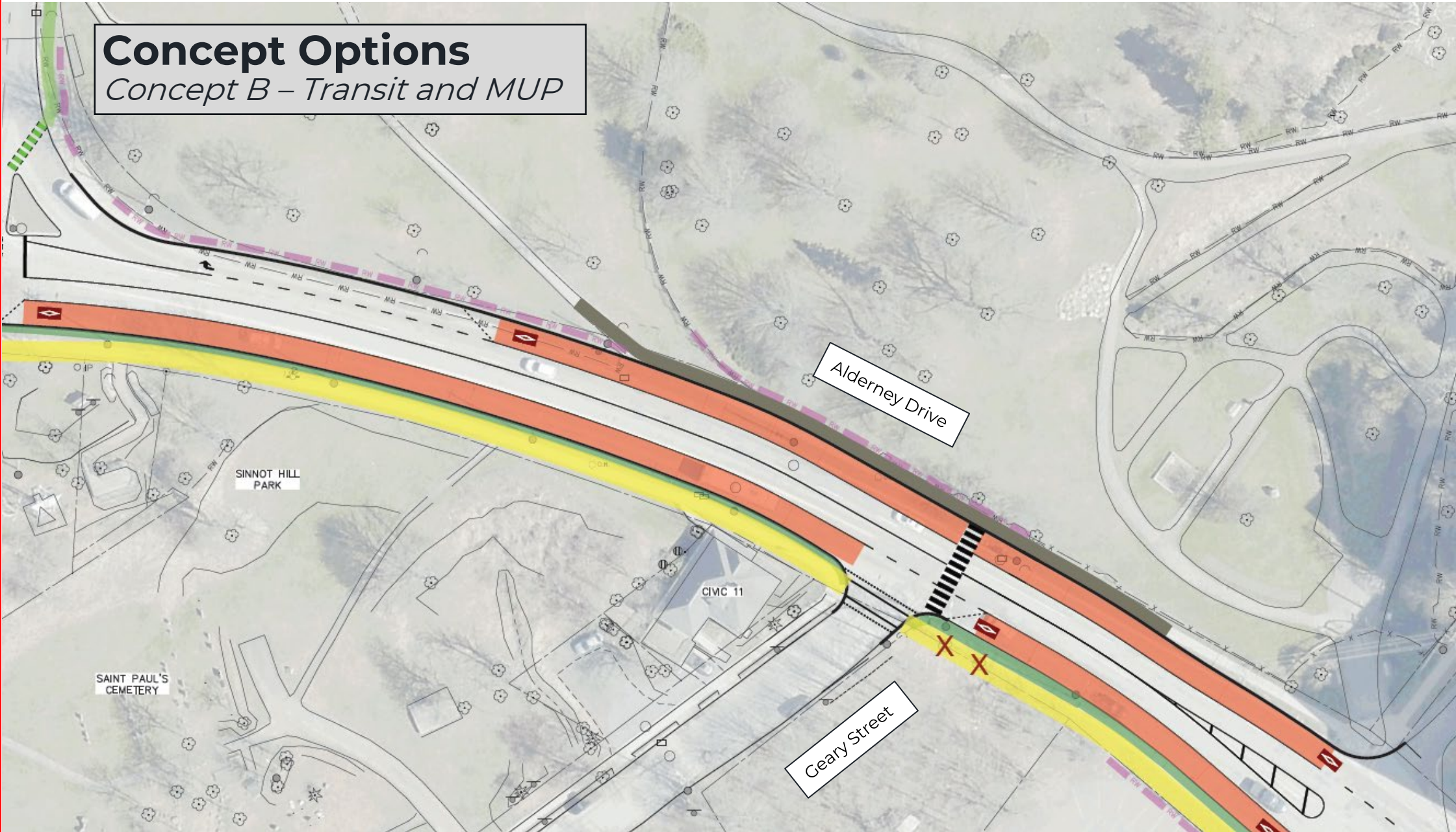
Existing  
Conditions

Concept  
Discussion

Next Steps

# Concept Options

*Concept B – Transit and MUP*





# Concept Options

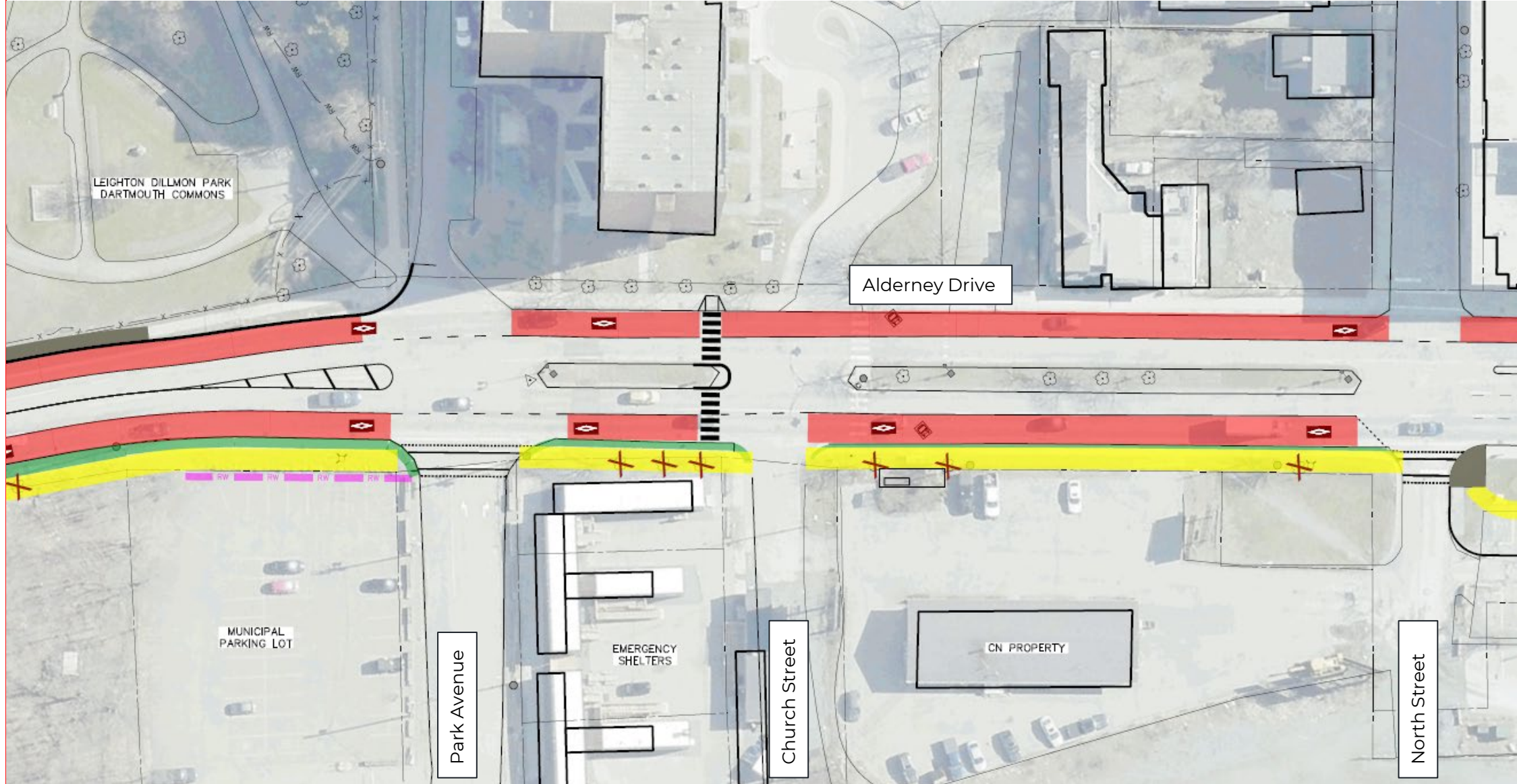
## Concept B – Transit and MUP

Project Introduction

Existing Conditions

Concept Discussion

Next Steps





# Concept Options

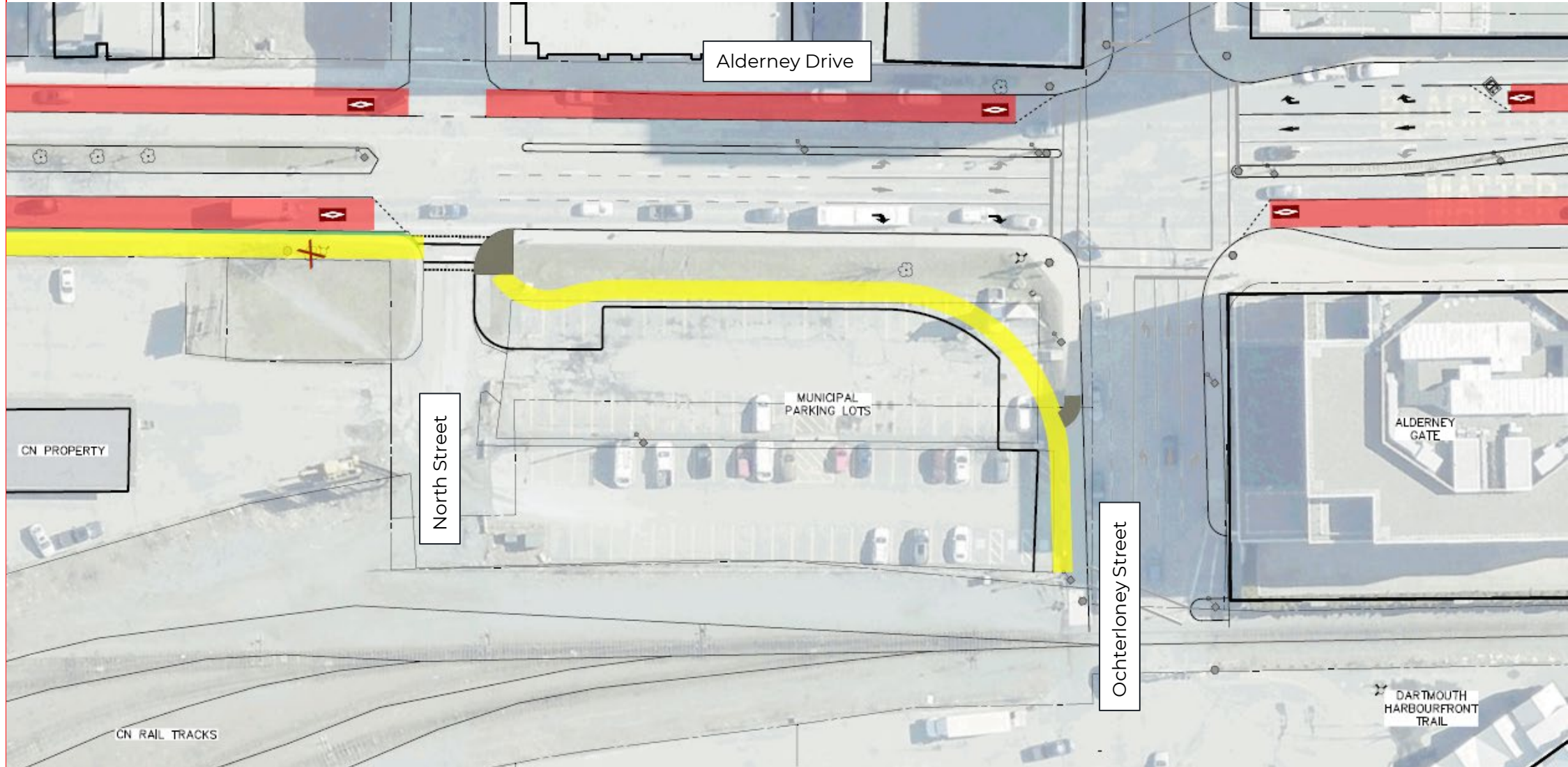
## *Concept B – Transit and MUP*

Project Introduction

Existing Conditions

Concept Discussion

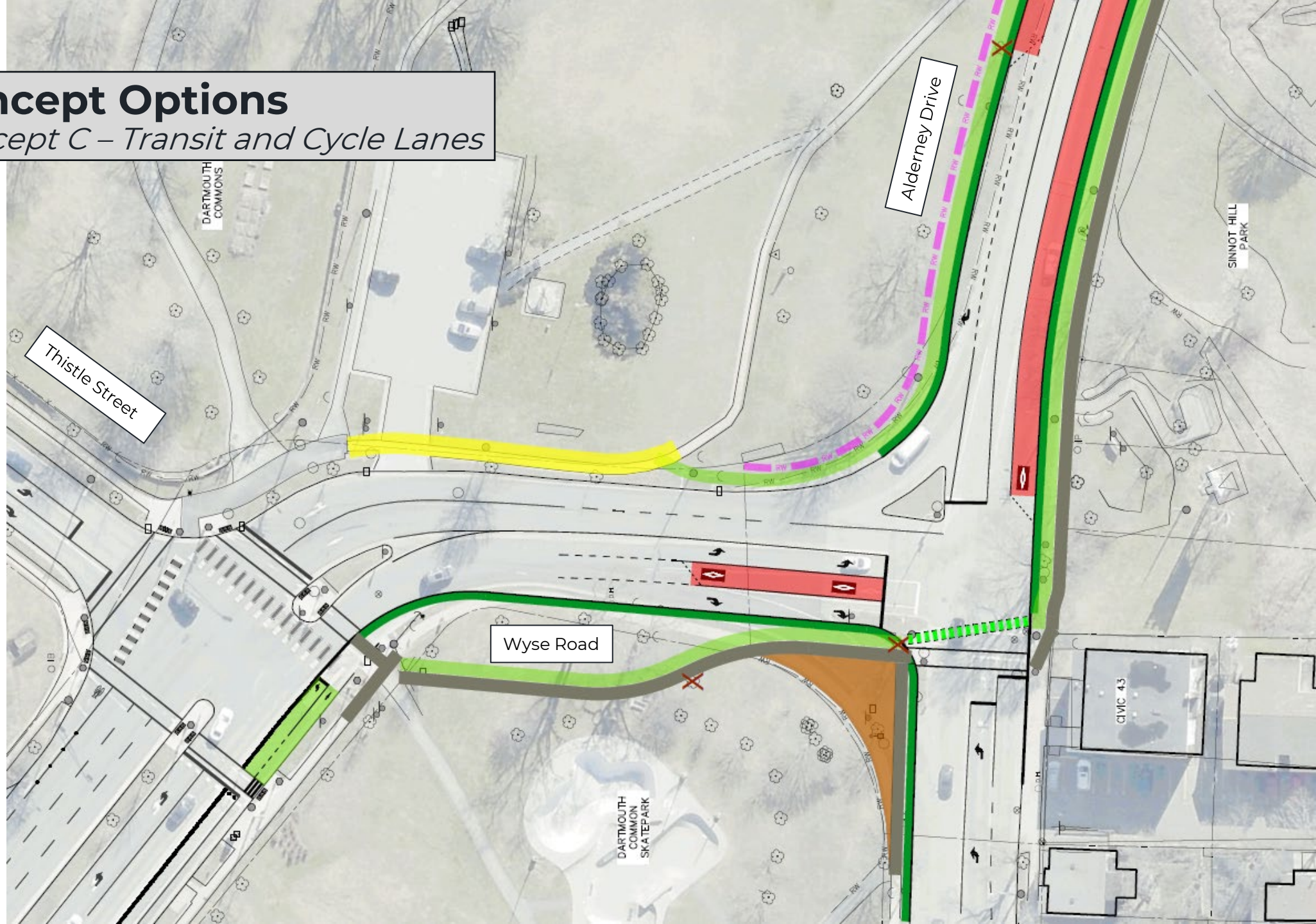
Next Steps





# Concept Options

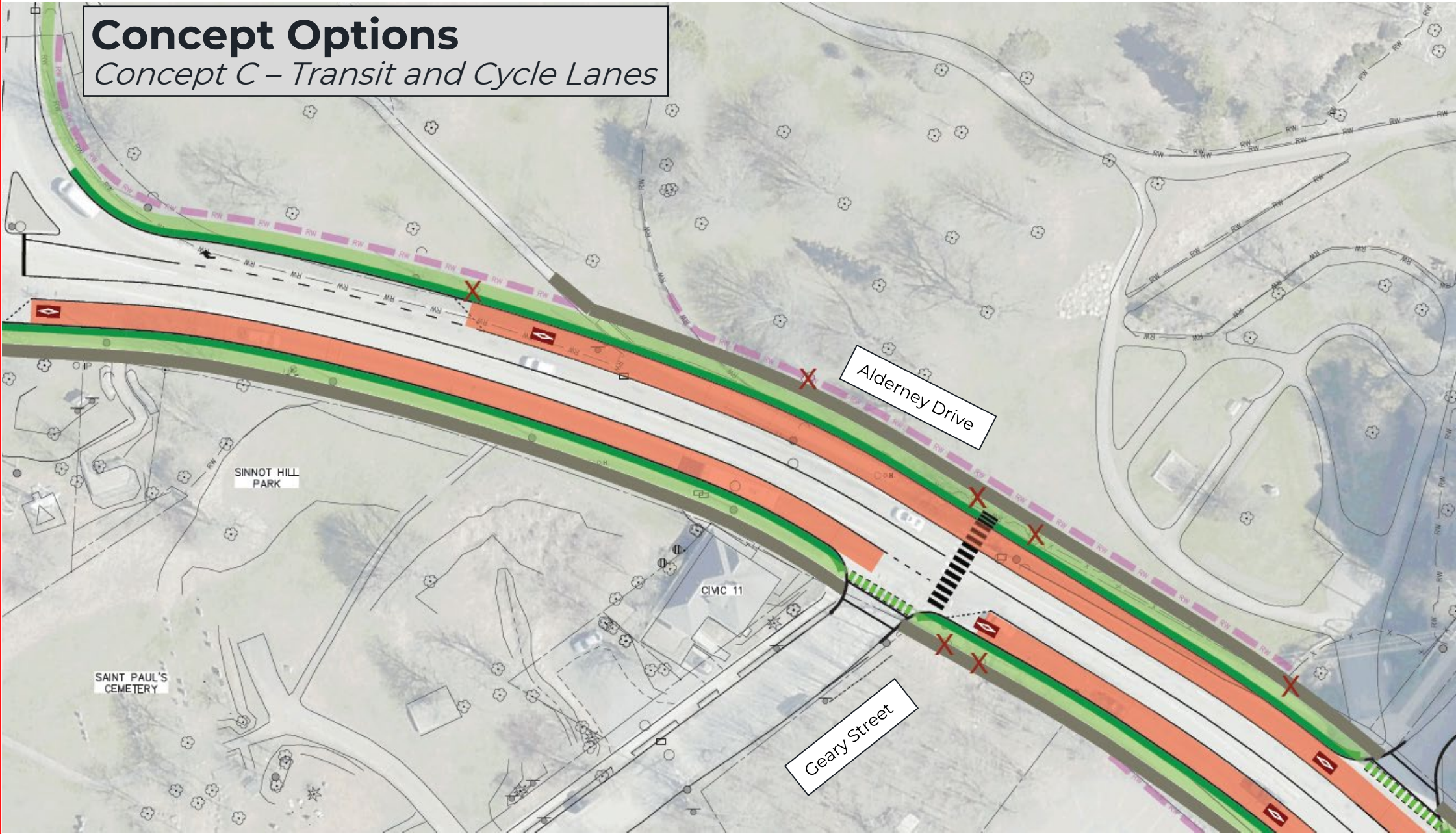
## Concept C – Transit and Cycle Lanes





# Concept Options

*Concept C – Transit and Cycle Lanes*





# Concept Options

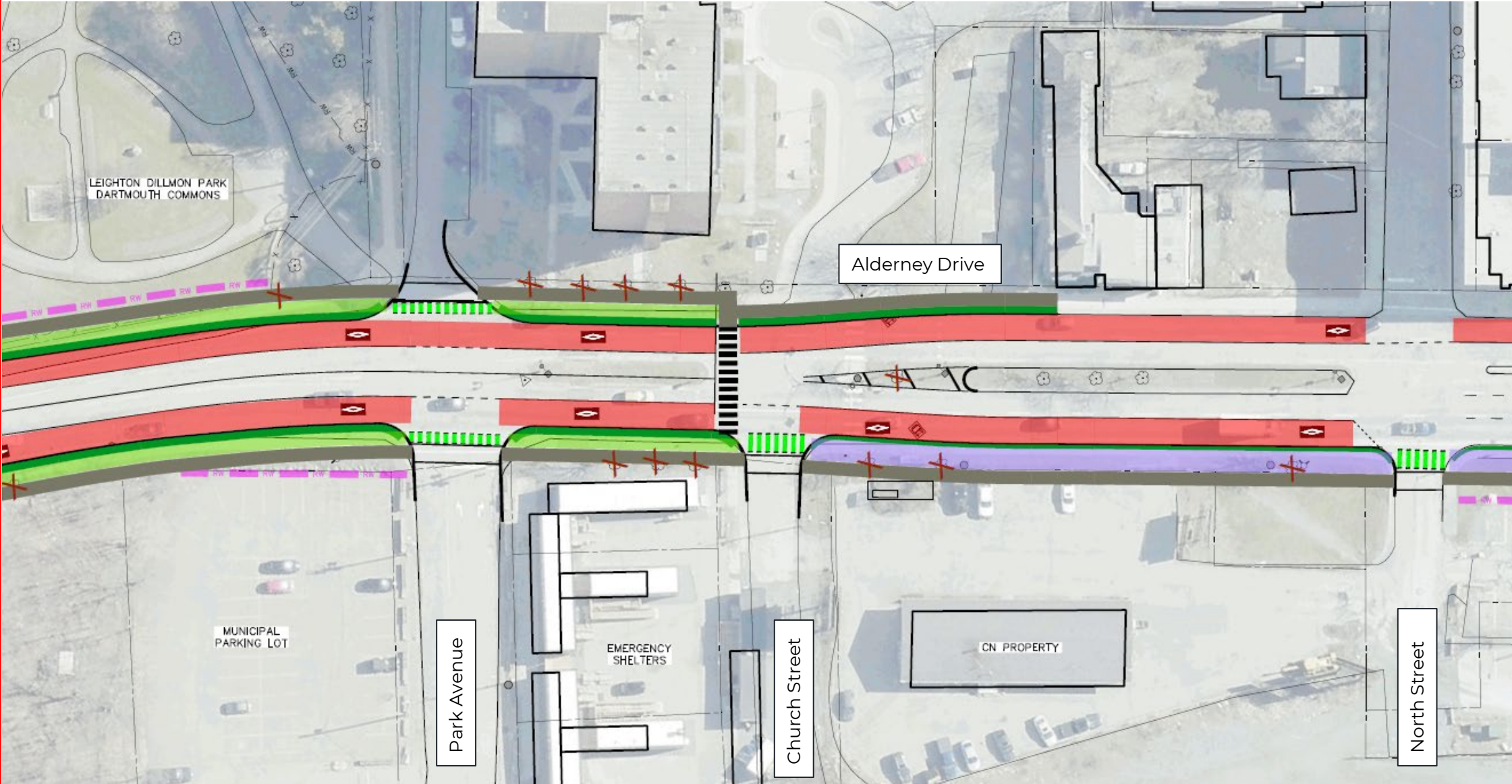
## *Concept C – Transit and Cycle Lanes*

Project Introduction

Existing Conditions

Concept Discussion

Next Steps



# Concept Options

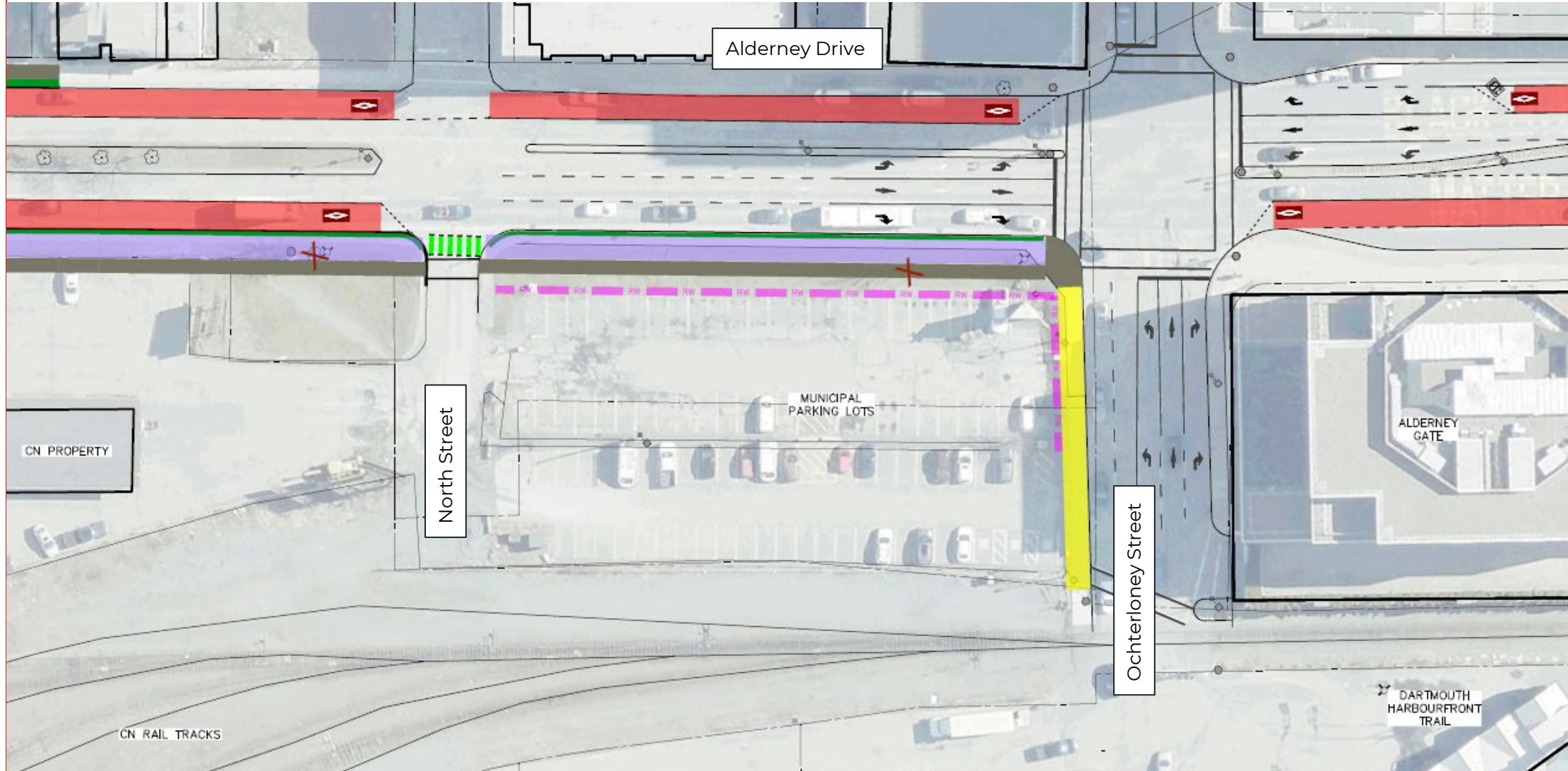
## Concept C – Transit and Cycle Lanes

Project Introduction

Existing Conditions

Concept Discussion

Next Steps





Project  
Introduction

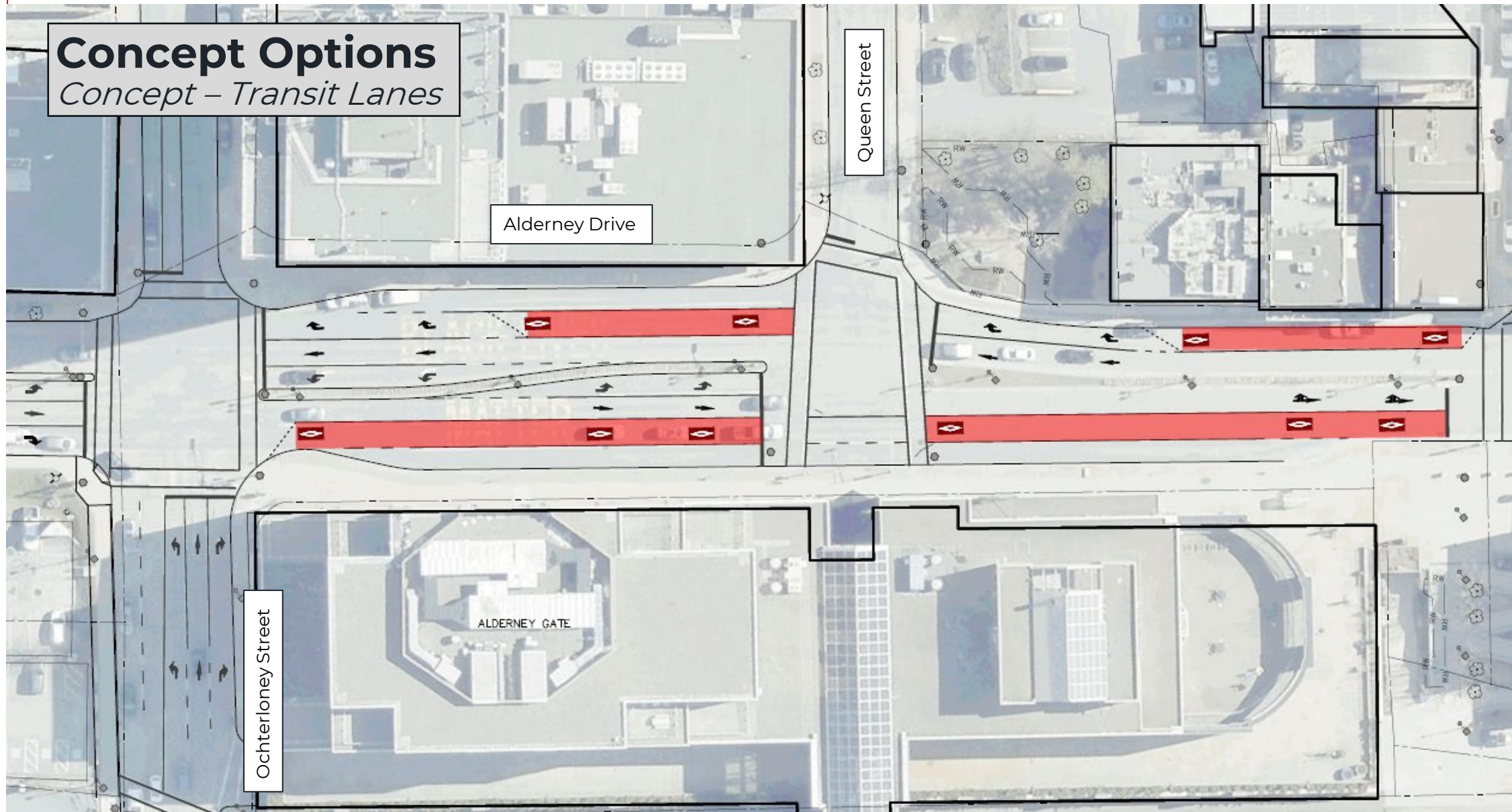
Existing  
Conditions

Concept  
Discussion

Next Steps

# CONCEPT DISCUSSION – Ochterloney to PAPA







# Concept Options

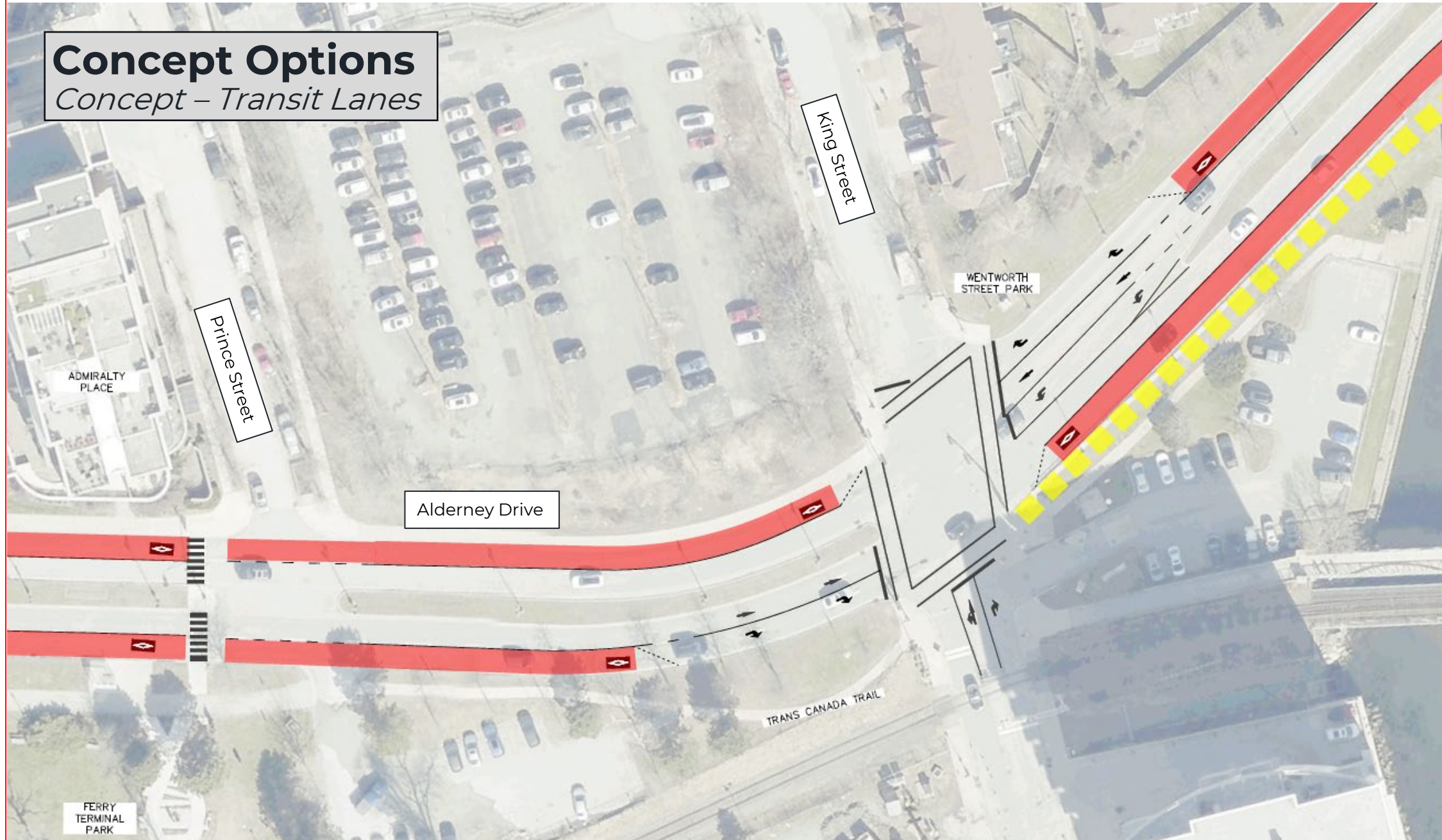
*Concept – Transit Lanes*





# Concept Options

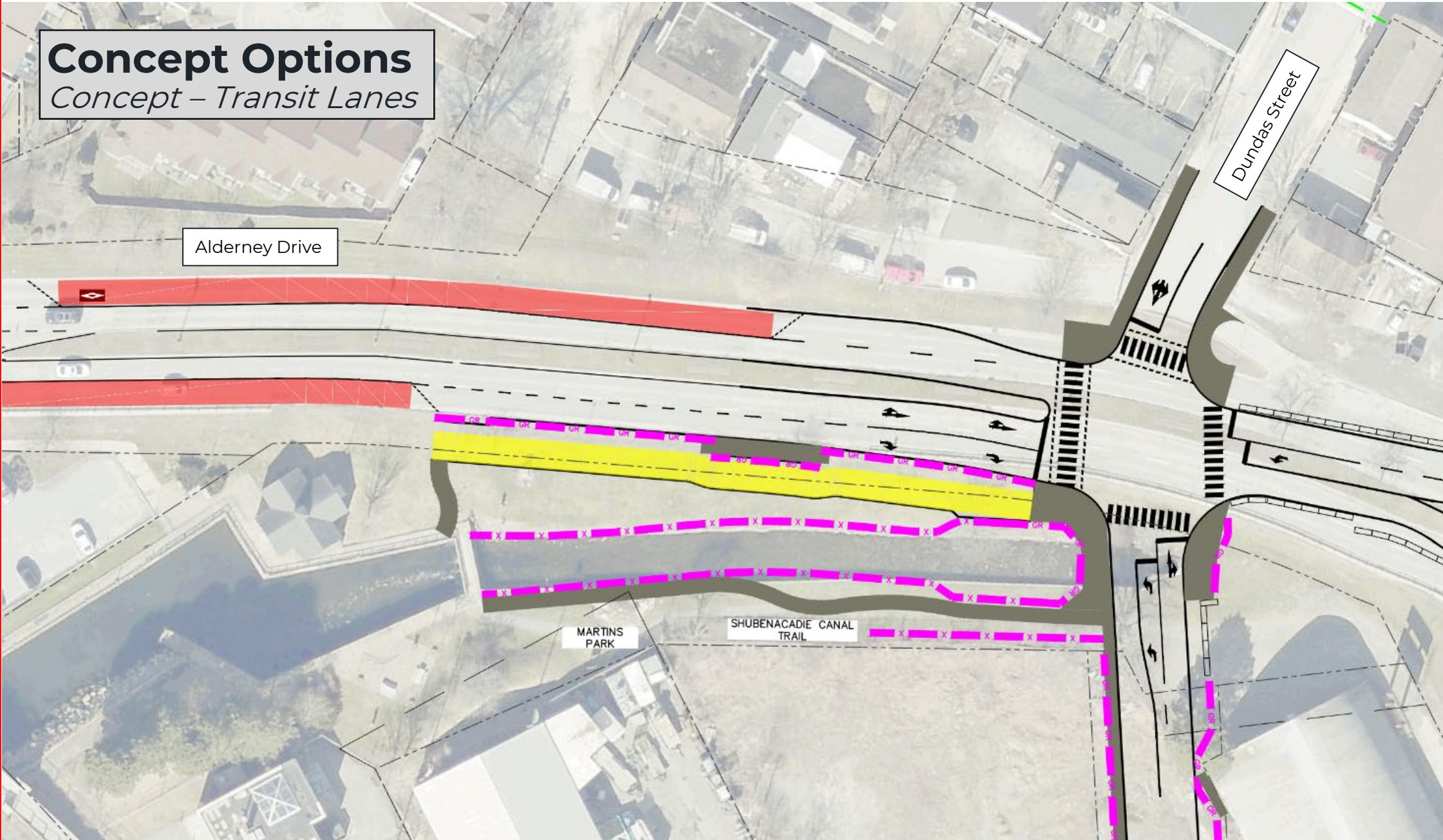
*Concept – Transit Lanes*





# Concept Options

*Concept – Transit Lanes*







Project  
Introduction

Existing  
Conditions

Concept  
Discussion

Next Steps

# PUBLIC ENGAGEMENT





# Public Engagement

Project  
Introduction

Existing  
Conditions

Concept  
Discussion

Next Steps

## ● Shape Your City - Survey

Survey is open from July 17<sup>th</sup> – August 23<sup>rd</sup>

[www.shapeyourcityhalifax.ca/alderney-drive](http://www.shapeyourcityhalifax.ca/alderney-drive)

## ● Stakeholder Site Walkthrough - Scheduled

Monday, August 26<sup>th</sup> 1:00 pm – 3:00 pm and Wednesday,  
August 28<sup>th</sup>, 2024

1:30 pm – 3:30 pm

# Public Engagement

Project Introduction

Existing Conditions

Concept Discussion

Next Steps

## ● Shape Your City Survey – Preliminary Feedback

Get rid of parking along Alderney Drive

Do not reduce the number of lanes

Better cycling connections to Ochterloney and Portland Street

Concern about impact on Dartmouth Common retaining wall and mature trees

Keep Lyle and Shore as an option for cyclists

### SURVEY RESPONSE REPORT

10 July 2024 - 08 August 2024

#### PROJECT NAME:

Alderney Drive Functional Plan - Phase One (Active Transportation & Transit)





Project  
Introduction

Existing  
Conditions

Concept  
Discussion

Next Steps

# NEXT STEPS



# Next Steps

A

## Project Initiation – December 2022

- ✓ Host Kick-Off meeting  
(December 7)
- ✓ Conduct site visit  
(December 14)

B

## Existing Conditions – January 2023

- ✓ Prepare base plan drawing
- ✓ Prepare draft Existing Conditions Memo
- ✓ Submit final Existing Conditions Report



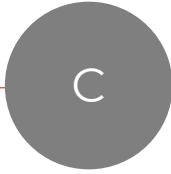
# Next Steps

Project Introduction

Existing Conditions

Concept Discussion

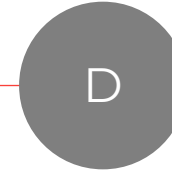
Next Steps



## Initial Concept Design – February 2023

- ✓ Prepare plan view drawings
- ✓ Prepare typical cross sections
- ✓ Prepare intersection drawings

**Project Reinitiation and Scope Change – February 2024**



## Updated Concept Design – June 2024

- ✓ Prepare plan view drawings
- ✓ Prepare typical cross sections
- ✓ Prepare intersection drawings

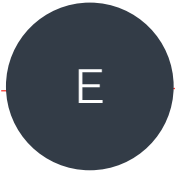
# Next Steps

Project  
Introduction

Existing  
Conditions

Concept  
Discussion

Next Steps



## Public & Stakeholder Engagement – August 2024

- ✓ Prepare public engagement materials
  - ✓ Launch and host public engagement activities & events
  - ✓ Engage with community advocacy groups
- >  Present at AAC and ATAC
  - Prepare draft WWH Report
  - Submit Final WWH Report



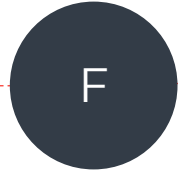
# Next Steps

Project Introduction

Existing Conditions

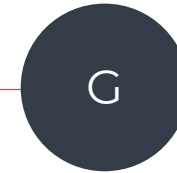
Concept Discussion

Next Steps



## Evaluation – September 2024

- Establish a list of evaluation criteria
- Evaluate the concepts
- Prepare draft Options Evaluation Summary Report
- Submit final Options Evaluation Summary Report



## Functional Design & Report – October 2024

- Develop 30% design drawings
- Prepare Class 'C' cost estimate
- Prepare draft Functional Plan Report
- Submit final Functional Plan Report

Finished

Thank You

