

TIMBERLEA/LAKESIDE/ BEECHVILLE LAND USE BY-LAW

Schedule A Zoning

Legend

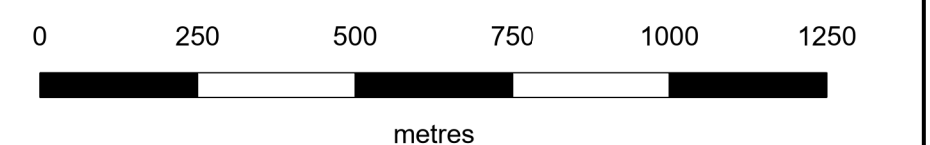
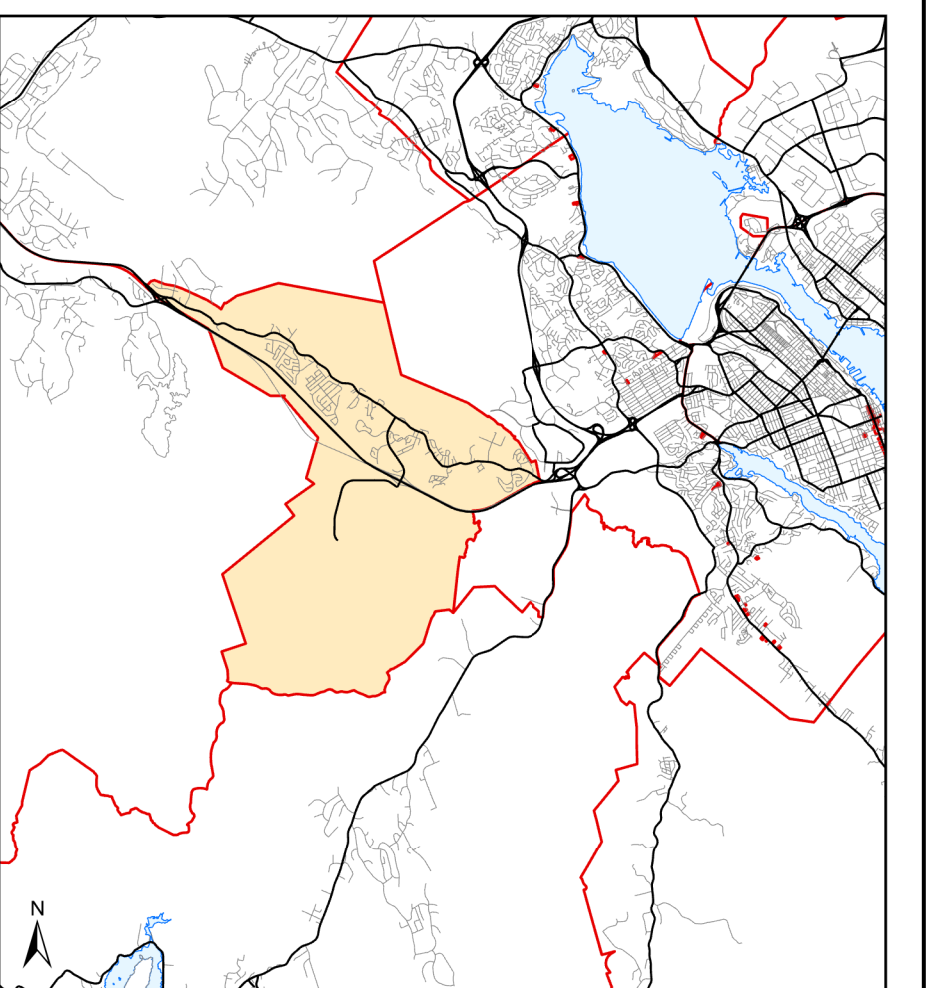
- R-1 Single Unit Dwelling
- R-1A Auxiliary Dwelling Unit
- R-2 Two Unit Dwelling
- R-3 Mobile Dwelling
- R-4 Multi-Unit Dwelling
- R-5 Townhouse Dwelling
- C-1 Local Business
- C-2 General Business
- C-3 Service Business
- I-1 Light Industry
- I-4 Transmitter
- MR-1 Mixed Resource
- P-1 Open Space
- P-2 Community Facility
- P-4 Conservation
- CDD Comprehensive Development District
- WC Western Common Regional Park
- UR Urban Reserve
- RPK Regional Park
- PA Protected Area
- BCDD Beechville Comprehensive Development District

- Bylaw Area Boundary
- Beechville Community Boundary

The complete package of zoning regulations varies for each community planning area. Reference to the complete package, together with the full text of the land use by-law, must be made in order to determine the permitted land uses and requirements for any land in HRM. Complete information for each land use by-law is available from HRM Planning Services.

These documents are copyrighted to Halifax Regional Municipality and may not be copied for the purpose of resale.

Key Map



Prepared by HRM Planning Services
Effective: 13 June 2024

Note: HRM does not guarantee the accuracy of any representation on this plan. Date of map does not indicate date of data creation.

