





Existing Parking and Site Accessories

LOCATION CERTIFICATE

LOT 84
Lands of
ROBERT J. MCMUWN
and
EILEEN M. McMULLIN
PIO. 00482786

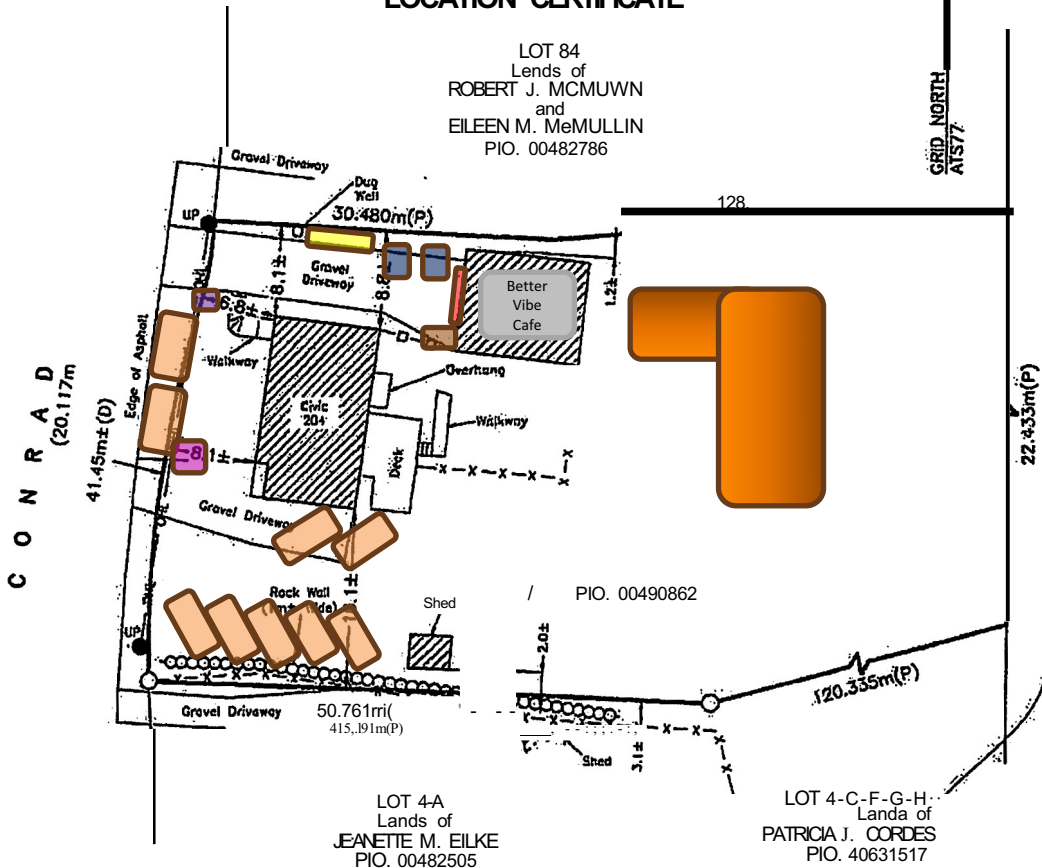
GRID NORTH
A1577

Parking Legend

-  Bicycle
-  Accessible
-  Vehicle
-  Electric Vehicle

Site Accessories Legend

-  Business Wall Signage
-  Standalone Sign Parking Direction
-  Garbage Pick-Up Commercial
-  Garbage Receptacle
-  Picnic Tables
-  Construction Debris







Proposed Parking and Site Accessories

LOCATION CERTIFICATE

LOT 84
Lands of
ROBERT J. MCMUWEN
and
EILEEN M. McMULLIN
PIO. 00482786

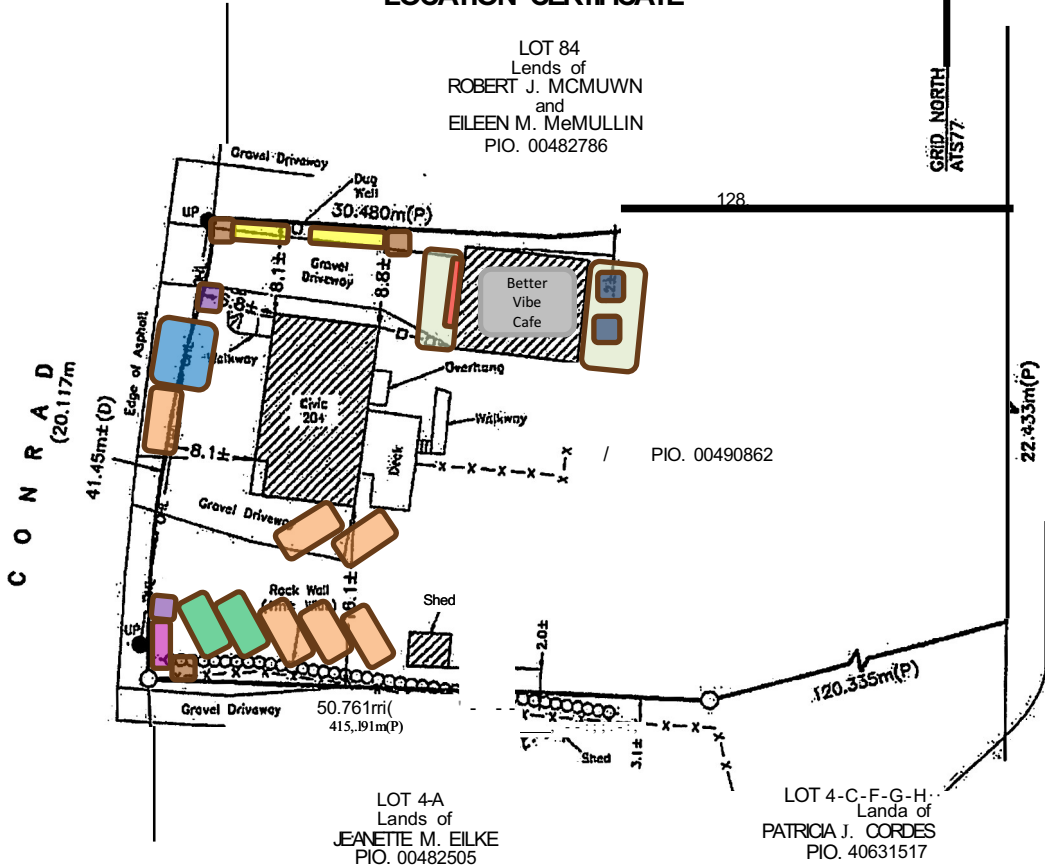
GRID NORTH
AT 57'

Parking Legend

-  Bicycle
-  Accessible
-  Vehicle
-  Electric Vehicle

Site Accessories Legend

-  Business Wall Signage
-  Standalone Sign
-  Garbage Pick-Up Commercial
-  Garbage Receptacle
-  Picnic Tables
-  Decking with Privacy Fence







PIO. 00490862

LOT 4-A
Lands of
JEANETTE M. EILKE
PIO. 00482505

LOT 4-C-F-G-H
Lands of
PATRICIA J. CORDES
PIO. 40631517

Existing Drainage and Septic

Drainage Legend

-  French Drain with 4-6 inch sleeved drain pipe
-  Septic Tank
-  Septic Field
-  Flow Direction

LOCATION CERTIFICATE

LOT 84
Lands of
ROBERT J. MCMUWN
and
EILEEN M. McMULLIN
PIO. 00482786

