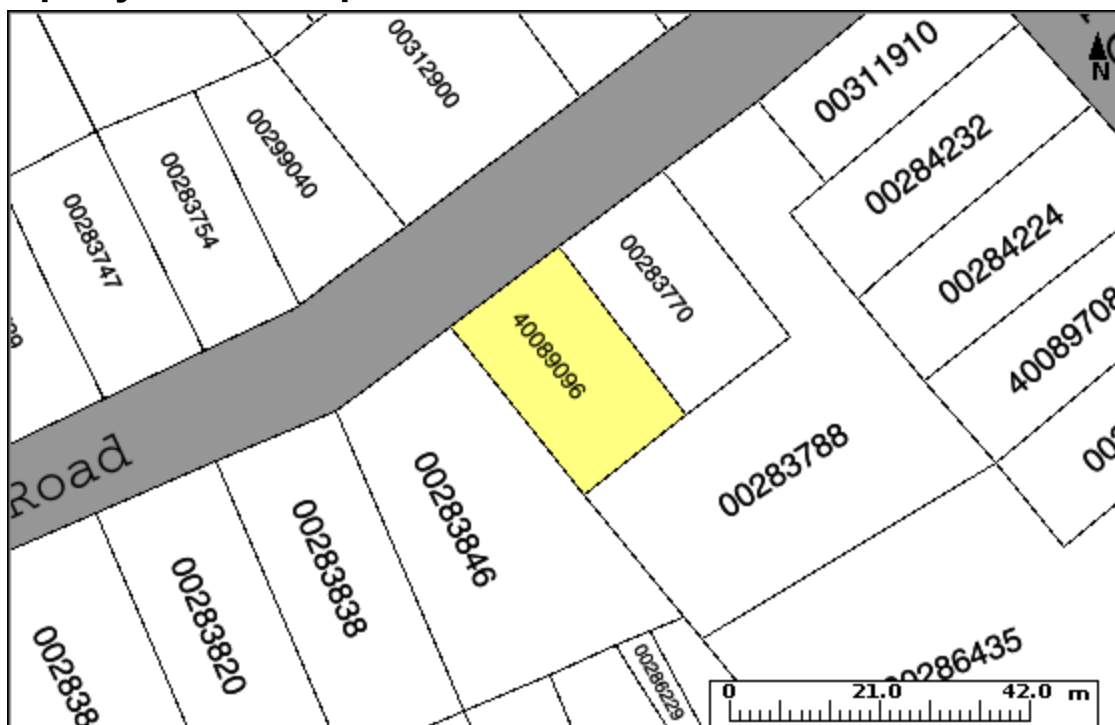




# Property Online Map

Date: **Oct 11, 2023 11:44:48 AM**



<b>PID:</b> 40089096	<b>Owner:</b> TUJAX DEVELOPMENTS LIMITED	<b>AAN:</b> 04836111
<b>County:</b> HALIFAX COUNTY		<b>Value:</b> \$293,500 (2023 RESIDENTIAL TAXABLE)
<b>LR Status:</b> LAND REGISTRATION	<b>Address:</b> 4 CATAMARAN ROAD HALIFAX	

The Provincial mapping is a graphical representation of property boundaries which approximate the size, configuration and location of parcels. Care has been taken to ensure the best possible quality, however, this map is not a land survey and is not intended to be used for legal descriptions or to calculate exact dimensions or area. The Provincial mapping is not conclusive as to the location, boundaries or extent of a parcel [*Land Registration Act* subsection 21(2)]. THIS IS NOT AN OFFICIAL RECORD.

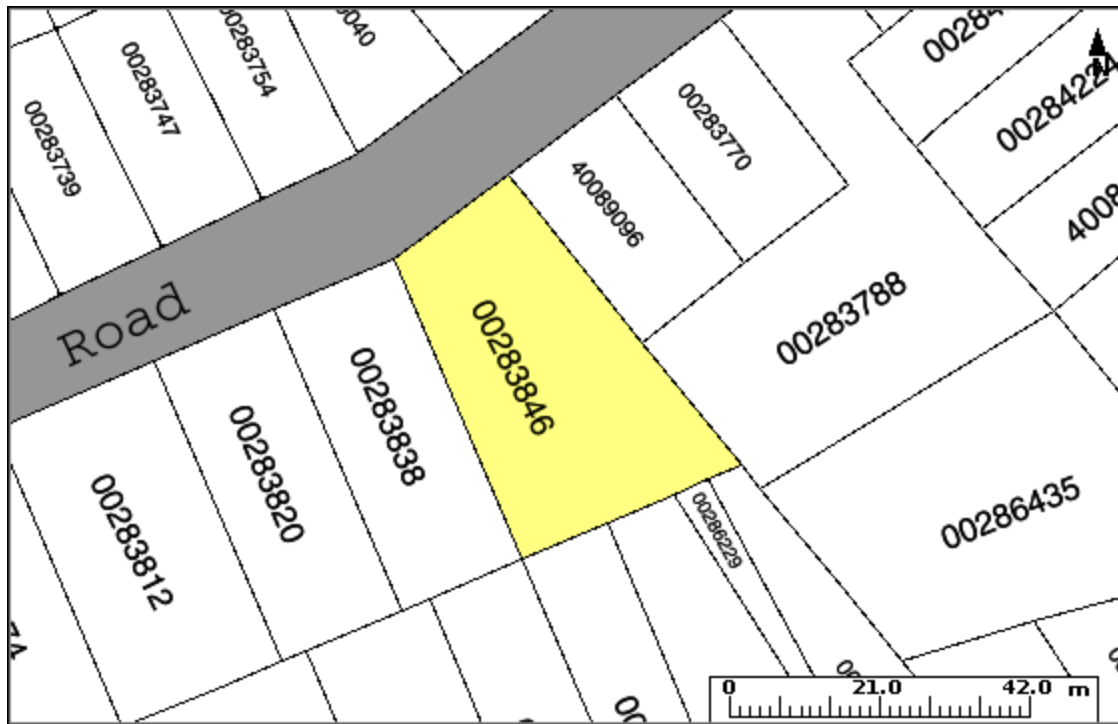
### Property Online version 2.0

This page and all contents are copyright © 1999-2003, [Government of Nova Scotia](http://www.government.nova Scotia.ca), all rights reserved.



## Property Online Map

Date: **Oct 11, 2023 11:46:21 AM**



<b>PID:</b> 00283846	<b>Owner:</b> TUJAX DEVELOPMENTS LIMITED	<b>AAN:</b> 01897608
<b>County:</b> HALIFAX COUNTY		<b>Value:</b> \$268,800 (2023 RESIDENTIAL TAXABLE)
<b>LR Status:</b> LAND REGISTRATION	<b>Address:</b> 6 CATAMARAN ROAD HALIFAX	

The Provincial mapping is a graphical representation of property boundaries which approximate the size, configuration and location of parcels. Care has been taken to ensure the best possible quality, however, this map is not a land survey and is not intended to be used for legal descriptions or to calculate exact dimensions or area. The Provincial mapping is not conclusive as to the location, boundaries or extent of a parcel [*Land Registration Act* subsection 21(2)]. THIS IS NOT AN OFFICIAL RECORD.

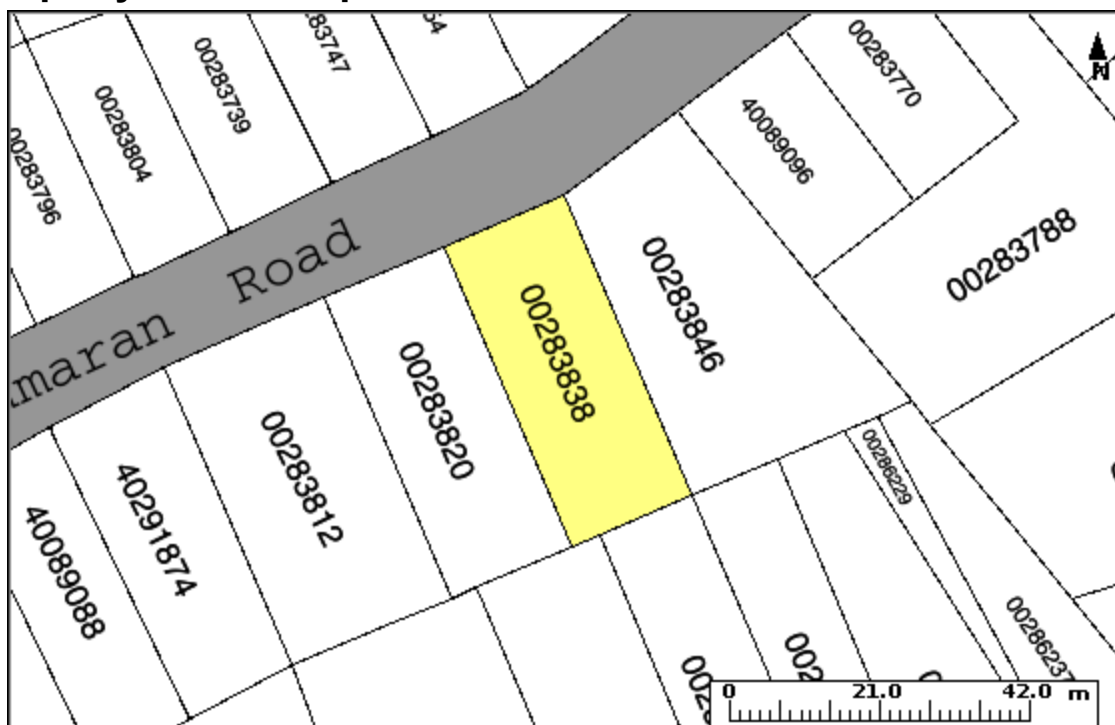
### Property Online version 2.0

This page and all contents are copyright © 1999-2003, [Government of Nova Scotia](http://www.government.nova-scotia.ca), all rights reserved.



# Property Online Map

Date: **Oct 11, 2023 11:52:48 AM**



<b>PID:</b> 00283838	<b>Owner:</b> TUJAX DEVELOPMENTS LIMITED	<b>AAN:</b> 00012734
<b>County:</b> HALIFAX COUNTY		<b>Value:</b> \$760,200 (2023 RESIDENTIAL TAXABLE)
<b>LR Status:</b> LAND REGISTRATION	<b>Address:</b> 8 CATAMARAN ROAD HALIFAX	

The Provincial mapping is a graphical representation of property boundaries which approximate the size, configuration and location of parcels. Care has been taken to ensure the best possible quality, however, this map is not a land survey and is not intended to be used for legal descriptions or to calculate exact dimensions or area. The Provincial mapping is not conclusive as to the location, boundaries or extent of a parcel [*Land Registration Act* subsection 21(2)]. THIS IS NOT AN OFFICIAL RECORD.

### Property Online version 2.0

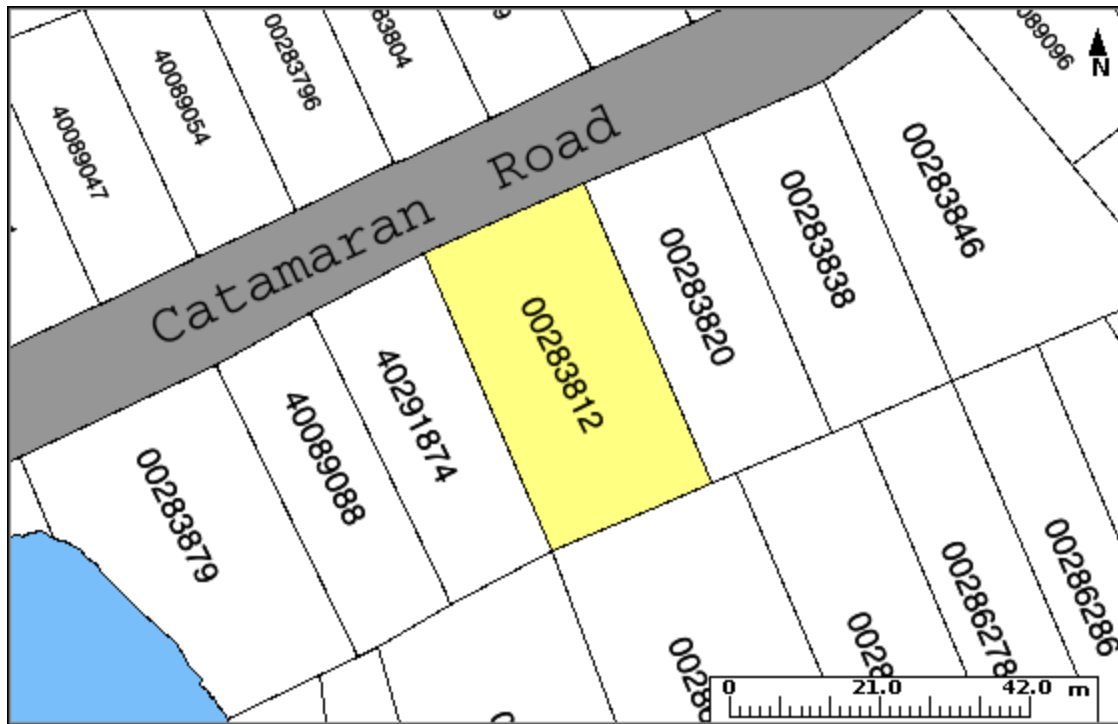
This page and all contents are copyright © 1999-2003, [Government of Nova Scotia](http://www.governmentofnovascotia.ca), all rights reserved.





## Property Online Map

Date: **Oct 11, 2023 11:56:00 AM**



<b>PID:</b> 00283812	<b>Owner:</b> TUJAX DEVELOPMENTS LIMITED	<b>AAN:</b> 02273829
<b>County:</b> HALIFAX COUNTY	TUJAX DEVELOPMENTS LIMITED	<b>Value:</b> \$274,200 (2023 RESIDENTIAL TAXABLE)
<b>LR Status:</b> LAND REGISTRATION	TUJAX DEVELOPMENTS LIMITED	
	<b>Address:</b> 12 CATAMARAN ROAD HALIFAX	

The Provincial mapping is a graphical representation of property boundaries which approximate the size, configuration and location of parcels. Care has been taken to ensure the best possible quality, however, this map is not a land survey and is not intended to be used for legal descriptions or to calculate exact dimensions or area. The Provincial mapping is not conclusive as to the location, boundaries or extent of a parcel [*Land Registration Act* subsection 21(2)]. THIS IS NOT AN OFFICIAL RECORD.

### Property Online version 2.0

This page and all contents are copyright © 1999-2003, [Government of Nova Scotia](https://www.government.nova-scotia.ca/), all rights reserved.