

## PLANNING DISTRICT 5 (CHEBUCTO PENINSULA) LAND USE BY-LAW Schedule A Zoning

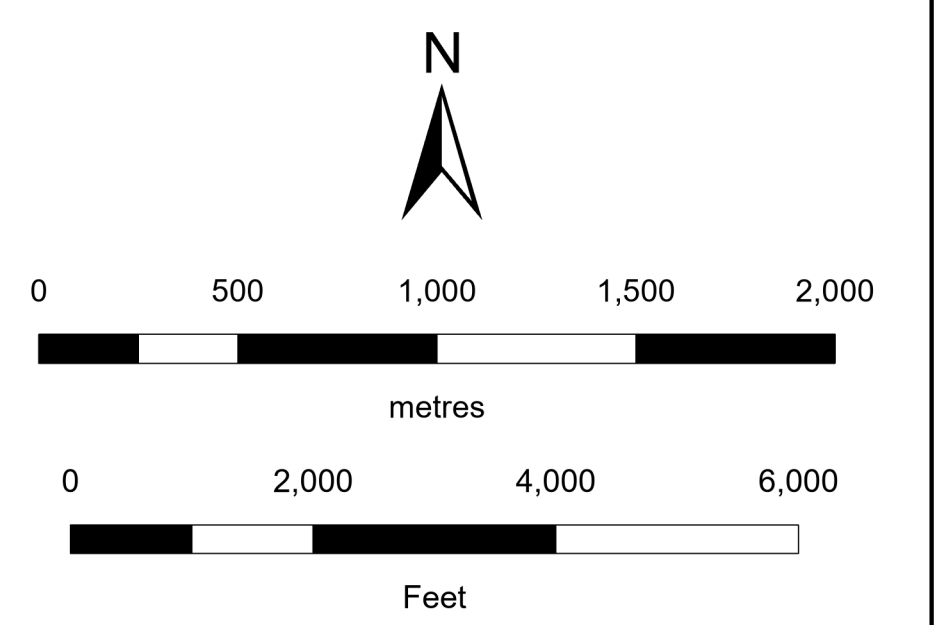
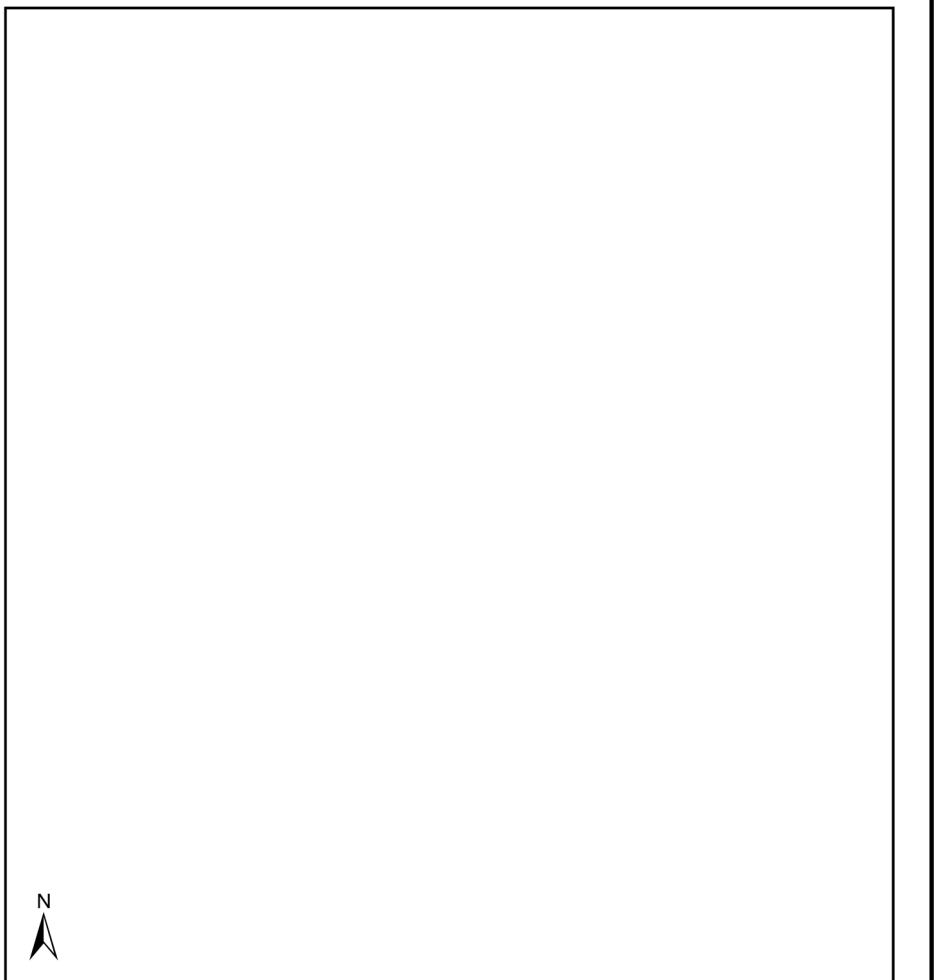
### Legend

- R-1 Single Unit Dwelling
- R-2 Two Unit Dwelling
- R-2a Residential Home Occupation
- R-2b Residential Equine
- R-6 Rural Residential
- R-6A Rural Mixed Residential
- HCR Herring Cove Residential
- V-1 Harrietsfield Village Centre
- V-3 Ketch Harbour Village Centre
- V-4 Sambro General Building
- C-1 Local Business
- C-2 General Business
- C-5 Industrial Commercial
- F-1 Fishing Industry
- P-2 Community Facility
- P-3 Park
- P-4 Conservation
- P-5 Special Facility
- D-1 DND
- RPK Regional Park
- UR Urban Reserve
- CD-2 C&D Materials Processing Facilities
- CD-3 C&D Materials Disposal Sites
- PA Protected Area

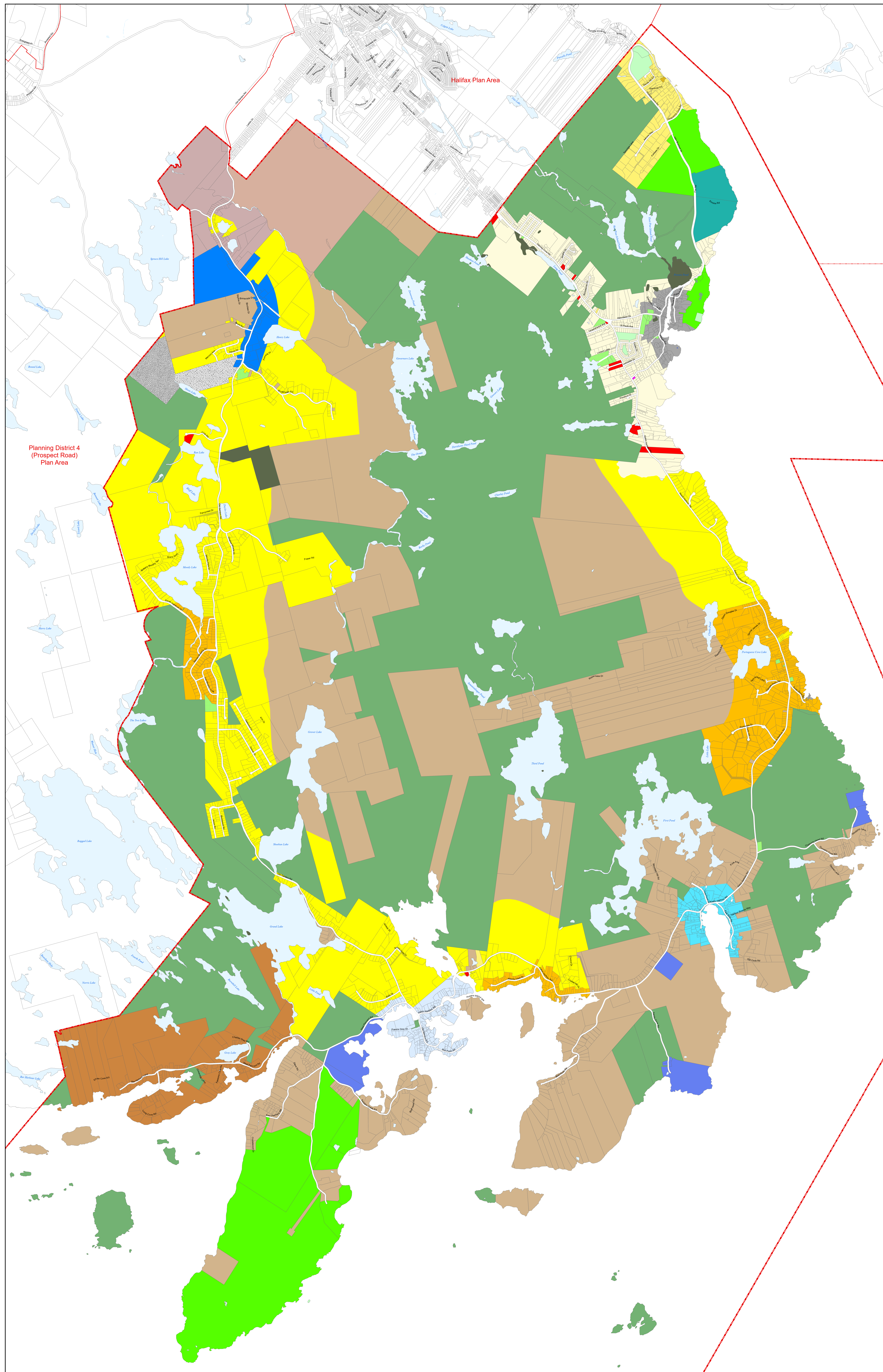
The complete package of zoning regulations varies for each community planning area. Reference to the complete package, together with the full text of the land use by-law, must be made in order to determine the permitted land uses and requirements for any land in HRM. Complete information for each land use by-law is available from HRM Planning Services.

These documents are copyrighted to Halifax Regional Municipality and may not be copied for the purpose of resale.

### Key Map



Updated: 30 November 2022  
Compiled by HRM Planning Services.  
HRM does not guarantee the accuracy of any representation on this plan.  
Date of map does not indicate date of data creation.



Halifax Plan Area

Planning District 4  
(Prospect Road)  
Plan Area