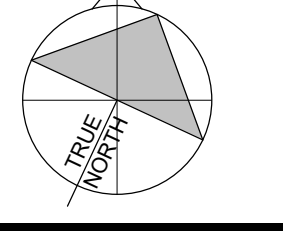


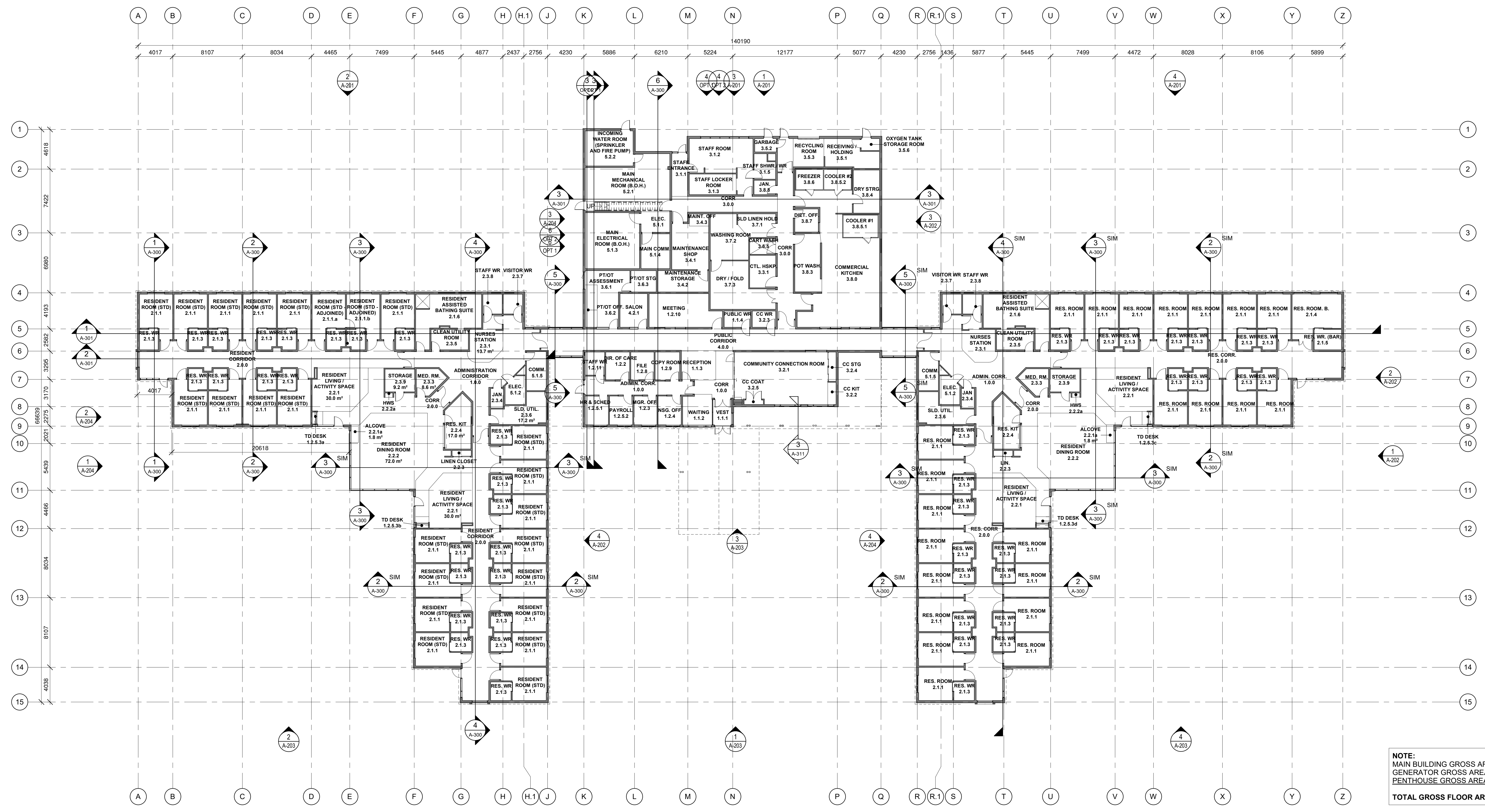
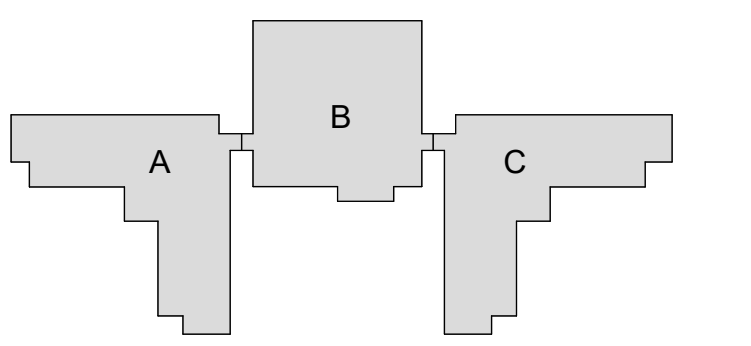
**NOT FOR
CONSTRUCTION**

THIS BAR IS 25mm LONG WHEN PLOTTED AT
CORRECT SCALE. DO NOT SCALE DRAWINGS.

NORTH ARROW: DIGITAL REFERENCE: 25mm



PROJECT NO: 229-00175-00 CONTRACT NO:
DRAWN BY: Author CHECKED BY: Checker APPROVED BY: Approver
REVISION:



NOTE:
MAIN BUILDING GROSS AREA = 3,728m²
GENERATOR GROSS AREA = 57m²
PENTHOUSE GROSS AREA = 126m²
TOTAL GROSS FLOOR AREA = 3,911m²

1:200 **A1** FLOOR PLAN - LEVEL 1 - OVERALL

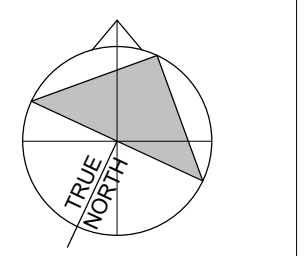
**THE BIRCHES NURSING
HOME REPLACEMENT
FACILITY**

**LEVEL 1 - FLOOR PLAN -
OVERALL - REFERENCE**

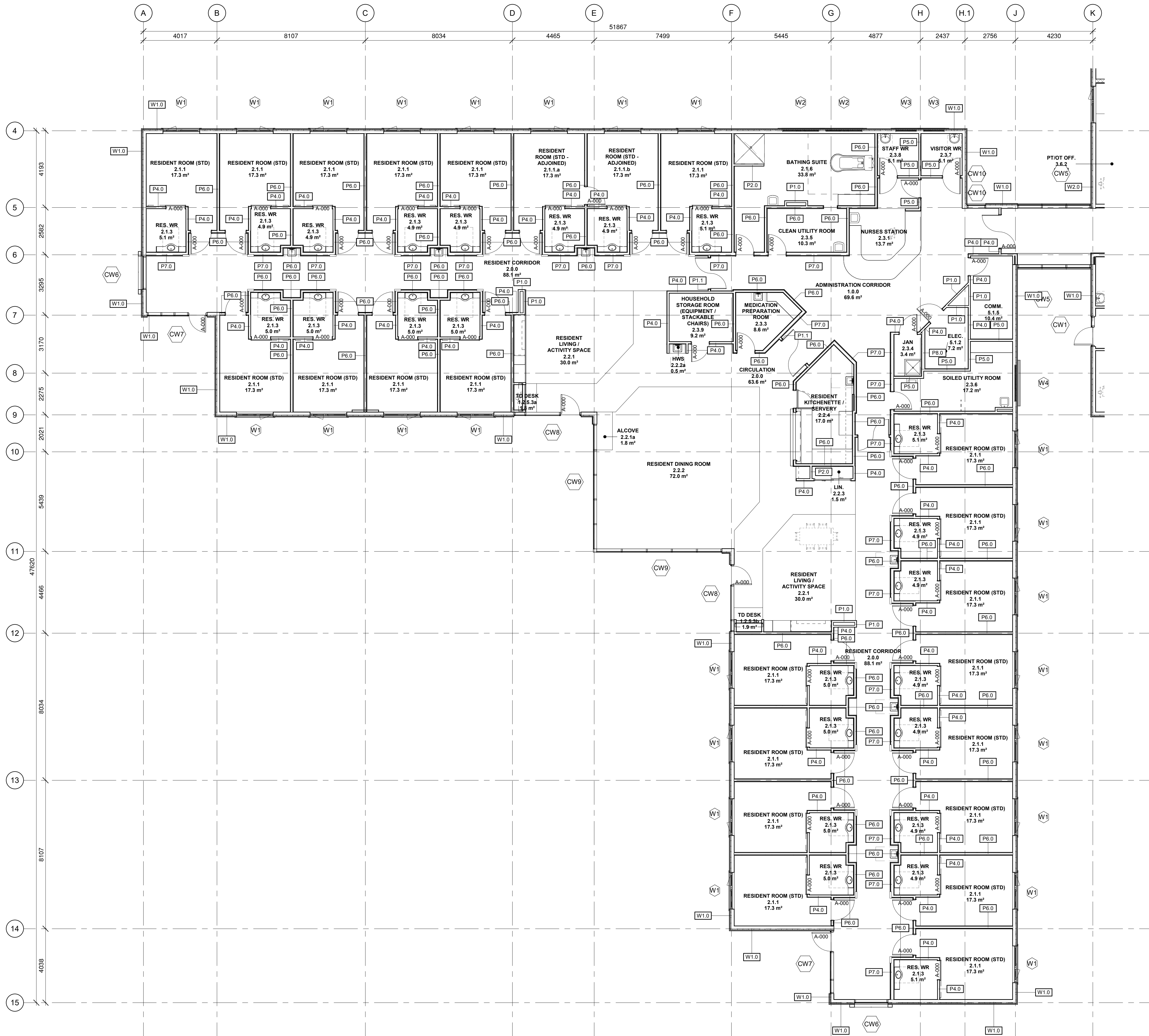
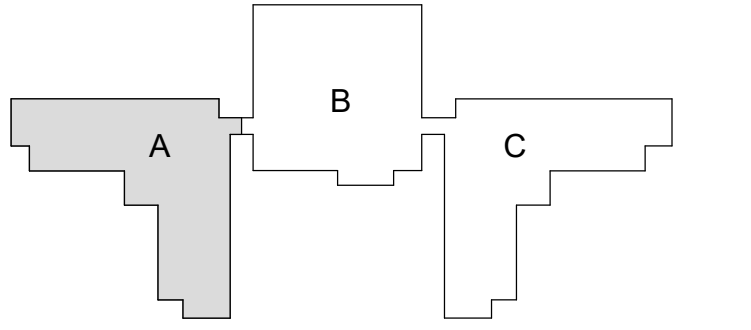
**NOT FOR
CONSTRUCTION**

THIS BAR IS 25mm LONG WHEN PLOTTED AT
CORRECT SCALE. DO NOT SCALE DRAWINGS.

NORTH ARROW: DIGITAL REFERENCE: 25mm



PROJECT NO.: 229-00175-00 CONTRACT NO.:
DRAWN BY: Author CHECKED BY: Checker APPROVED BY: Approver
KEY PLAN:



1:100 FLOOR PLAN - LEVEL 1 - WING 'A'

**THE BIRCHES NURSING
HOME REPLACEMENT
FACILITY**

DRAWING TITLE

**LEVEL 1 - FLOOR PLAN -
WING 'A'**

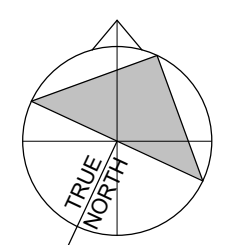
DRAWING NO. **A-101.1**

PRINT DATE: 2023-06-10 1:52:45 PM

**NOT FOR
CONSTRUCTION**

THIS BAR IS 25mm LONG WHEN PLOTTED AT
CORRECT SCALE. DO NOT SCALE DRAWINGS.

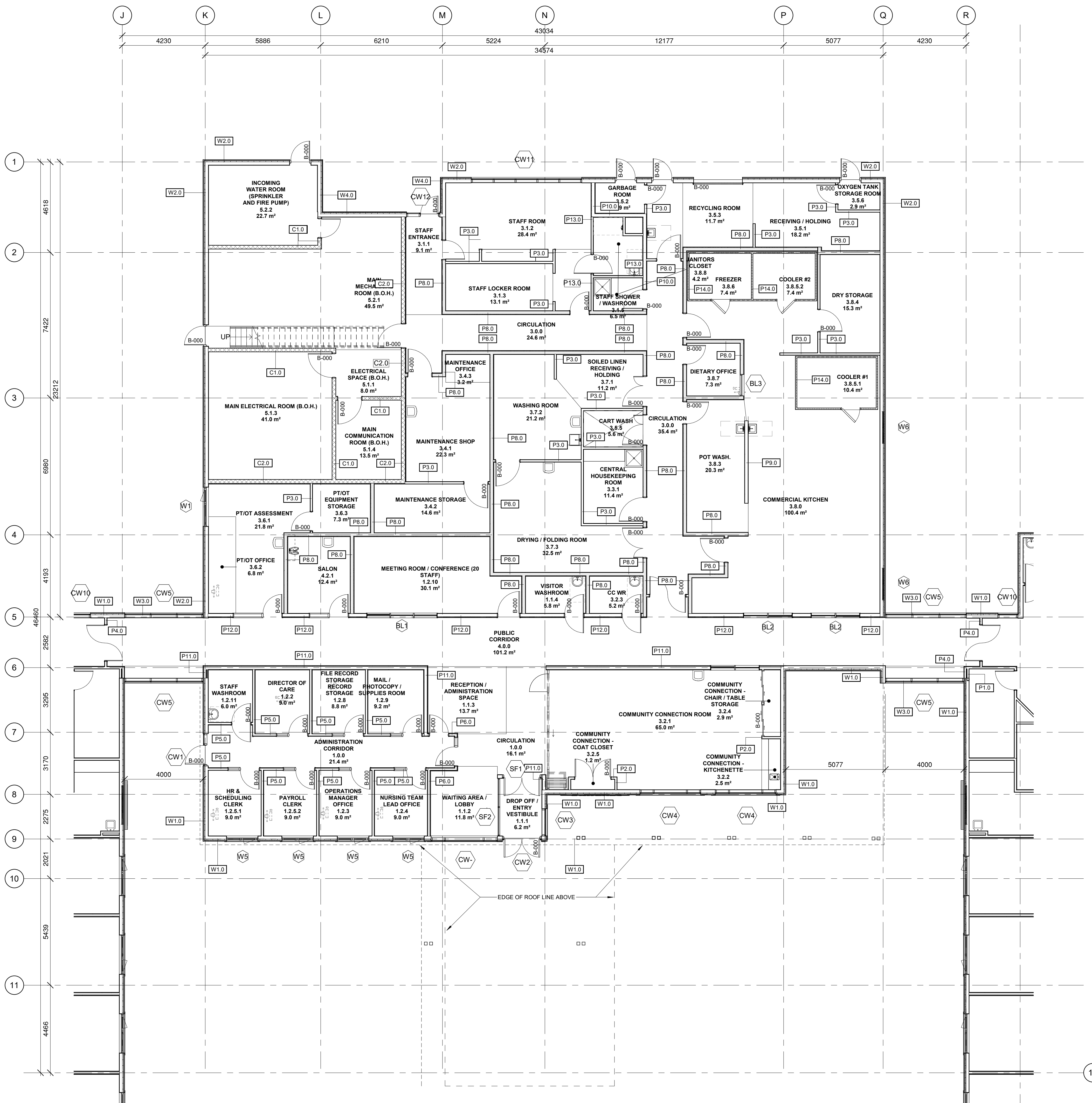
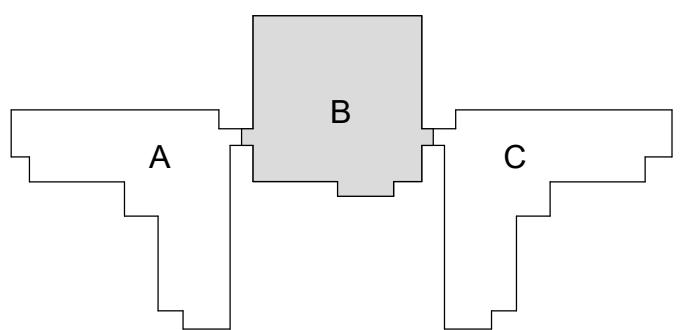
NORTH ARROW: DIGITAL REFERENCE: 25mm



PROJECT NO: 229-00175-00 CONTRACT NO:

DRAWN BY: Author CHECKED BY: Checker APPROVED BY: Approver

KEYPLAN:



1:100 **FLOOR PLAN - LEVEL 1 - WING 'B'**

| | | |
|---|------------|----------------------------------|
| 2 | 2023.08.10 | ISSUED FOR DEVELOPMENT AGREEMENT |
| 1 | 2023.07.21 | ISSUED FOR DD REPORT |
| | | ISSUED |

**THE BIRCHES NURSING
HOME REPLACEMENT
FACILITY**

DRAWING TITLE

**LEVEL 1 - FLOOR PLAN -
WING 'B'**

DRAWING NO.

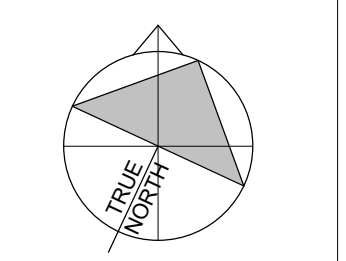
A-101.2

PRINT DATE: 2023-08-10 1:58:12 PM

**NOT FOR
 CONSTRUCTION**

THIS BAR IS 25mm LONG WHEN PLOTTED AT
 CORRECT SCALE. DO NOT SCALE DRAWINGS.

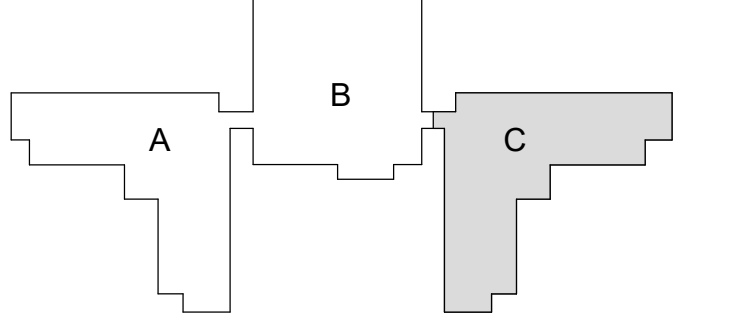
NORTH ARROW: DIGITAL REFERENCE: 25mm



PROJECT NO: 229-0075-00 CONTRACT NO:

DRAWN BY: Author CHECKED BY: Checker APPROVED BY: Approver

KEY PLAN:



| | | |
|---|------------|----------------------------------|
| 2 | 2023.08.10 | ISSUED FOR DEVELOPMENT AGREEMENT |
| 1 | 2023.07.21 | ISSUED FOR DD REPORT |
| | | ISSUED |

**THE BIRCHES NURSING
 HOME REPLACEMENT
 FACILITY**

DRAWING TITLE

**LEVEL 1 - FLOOR PLAN -
 WING 'C'**

DRAWING NO. **A-101.3**

PRINT DATE: 2023-08-10 2:06:46 PM

