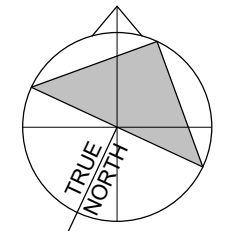


**NOT FOR
CONSTRUCTION**

THIS BAR IS 25mm LONG WHEN PLOTTED AT
CORRECT SCALE. DO NOT SCALE DRAWINGS.

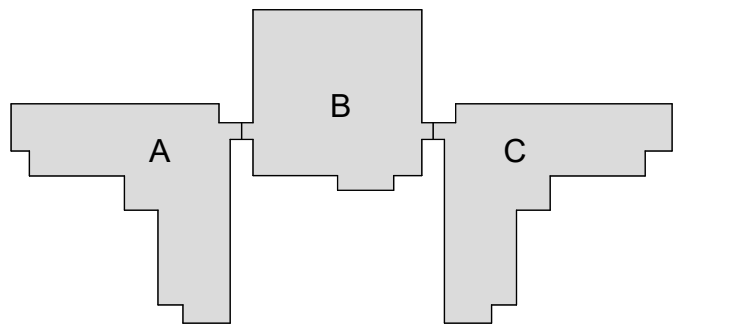
NORTH ARROW: DIGITAL REFERENCE: 25mm



PROJECT NO.: 229-00175-00 CONTRACT NO.:

DRAWN BY: Author CHECKED BY: Checker APPROVED BY: Approver

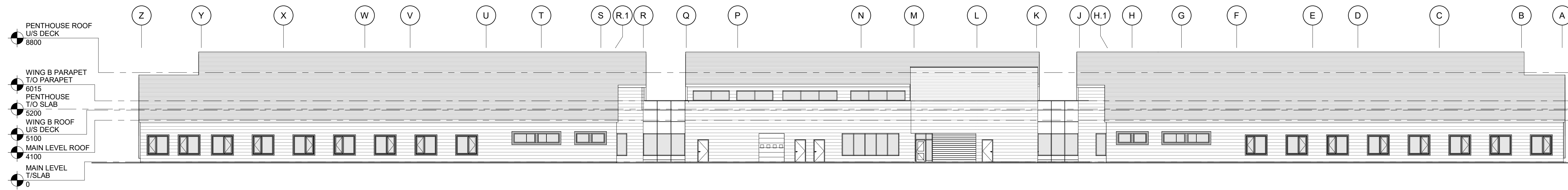
KEYPLAN:



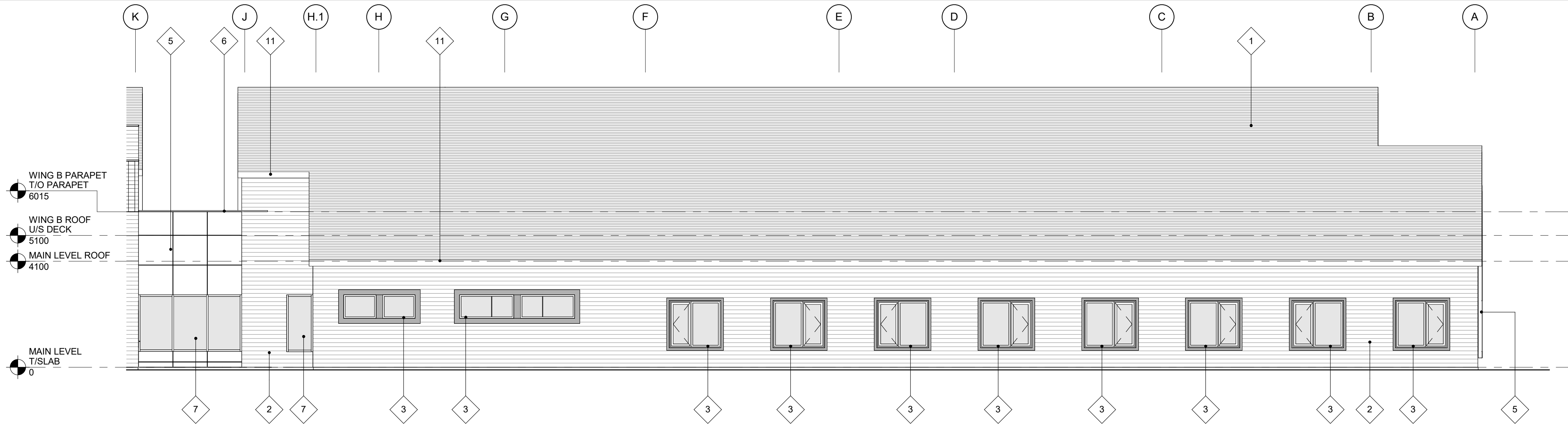
EXTERIOR MATERIALS LEGEND

NOTE: EXTERIOR MATERIALS LEGEND TO BE COORDINATED
WITH SPECIFICATION FOR ALL TYPES AND COLORS

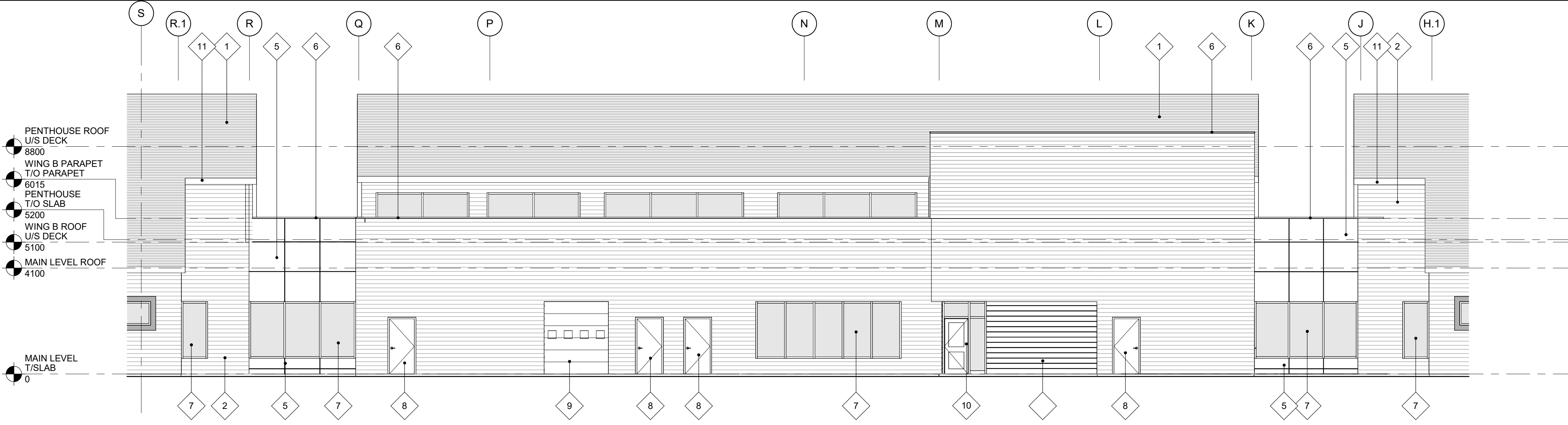
- 1 METAL STANDING SEAM ROOF
- 2 VINYL SHAKE SIDING
- 3 VINYL WINDOWS (COLOUR BLACK/ CHARCOAL GREY)
- 4 PREFINISHED METAL COMPOSITE PANEL WINDOW BOX
- 5 PREFINISHED METAL COMPOSITE PANEL
- 6 PREFINISHED METAL FLASHING
- 7 CURTAIN WALL SYSTEM AND GLAZING
- 8 PREFINISHED METAL DOOR
- 9 PREFINISHED OVERHEAD SECTIONAL DOOR
- 10 ALUMINIUM DOOR, FRAME AND GLAZING SYSTEM
- 11 PREFINISHED SOFFIT / FASCIA BOARD
- 12 PREFINISHED ROOF VENT
- 13 PLACEHOLDER FOR SIGNAGE
- 14 CORRUGATED METAL SIDING



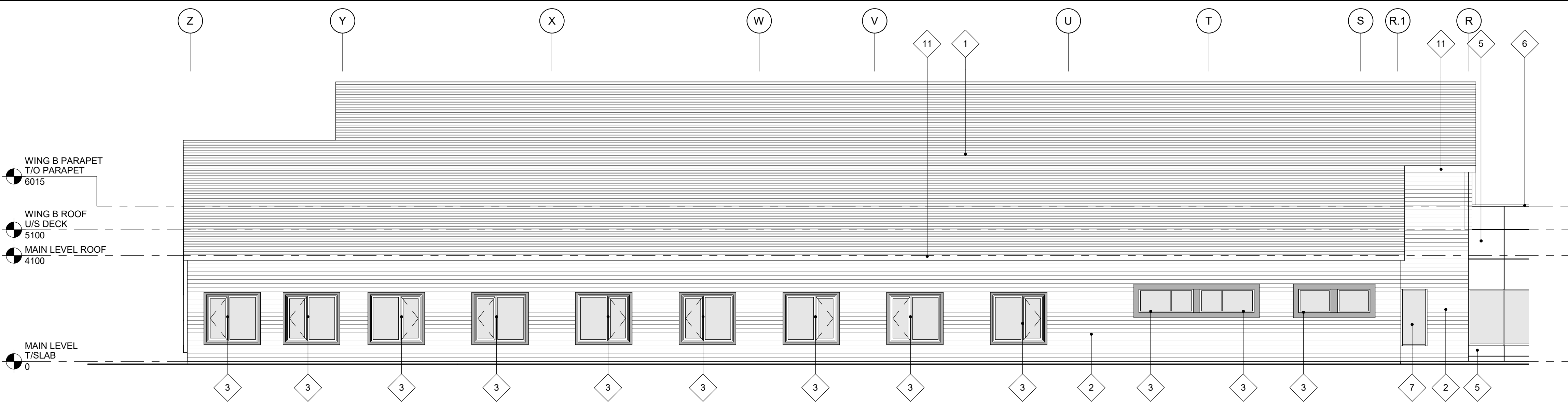
1 : 200 **1** EXTERIOR ELEVATION - NORTH - OVERALL



1 : 100 **2** EXTERIOR ELEVATION - NORTH - WING 'A'



1 : 100 **3** EXTERIOR ELEVATION - NORTH - WING 'B'



1 : 100 **4** EXTERIOR ELEVATION - NORTH - WING 'C'

| | | |
|---|------------|----------------------------------|
| 2 | 2023.08.10 | ISSUED FOR DEVELOPMENT AGREEMENT |
| 1 | 2023.07.21 | ISSUED FOR DD REPORT |
| | | ISSUED |

**THE BIRCHES NURSING
HOME REPLACEMENT
FACILITY**

DRAWING TITLE

**EXTERIOR ELEVATIONS
- NORTH**

DRAWING NO. **A-201**

PRINT DATE: 2023-08-10 2:08:19 PM

CONSULTANT

CONSULTANT

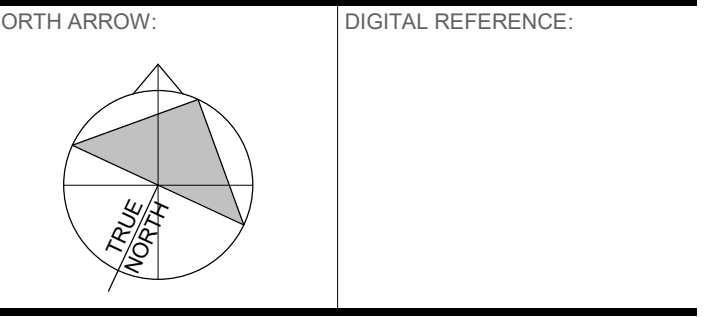
CLIENT

COPYRIGHT NOTICE
THIS DRAWING AND DESIGN IS COPYRIGHT PROTECTED.
DO NOT REPRODUCE OR REVISE WITHOUT WRITTEN
PERMISSION BY ARCHITECTURE49 INC.

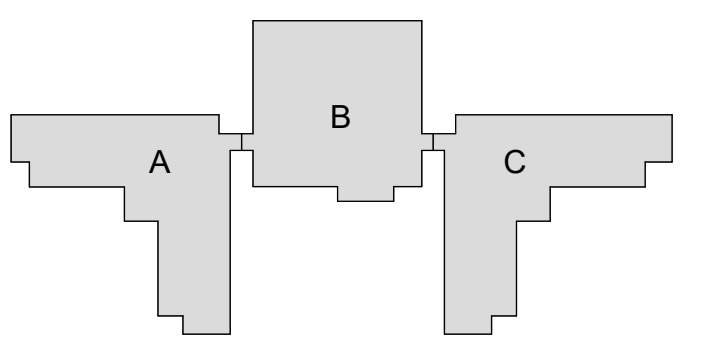
SEAL:

NOT FOR CONSTRUCTION

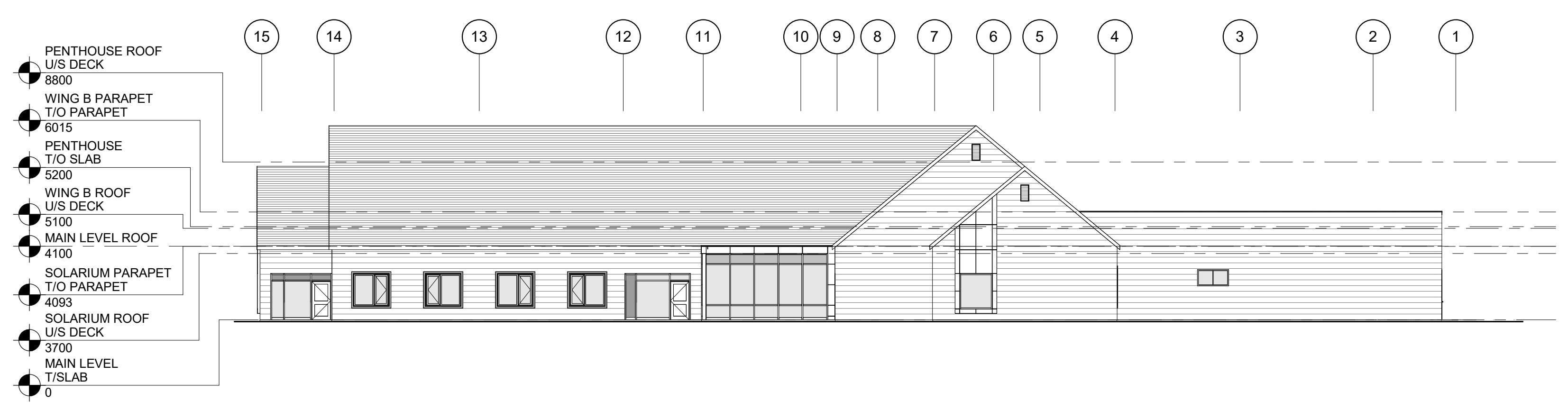
THIS BAR IS 25mm LONG WHEN PLOTTED AT CORRECT SCALE. DO NOT SCALE DRAWINGS.



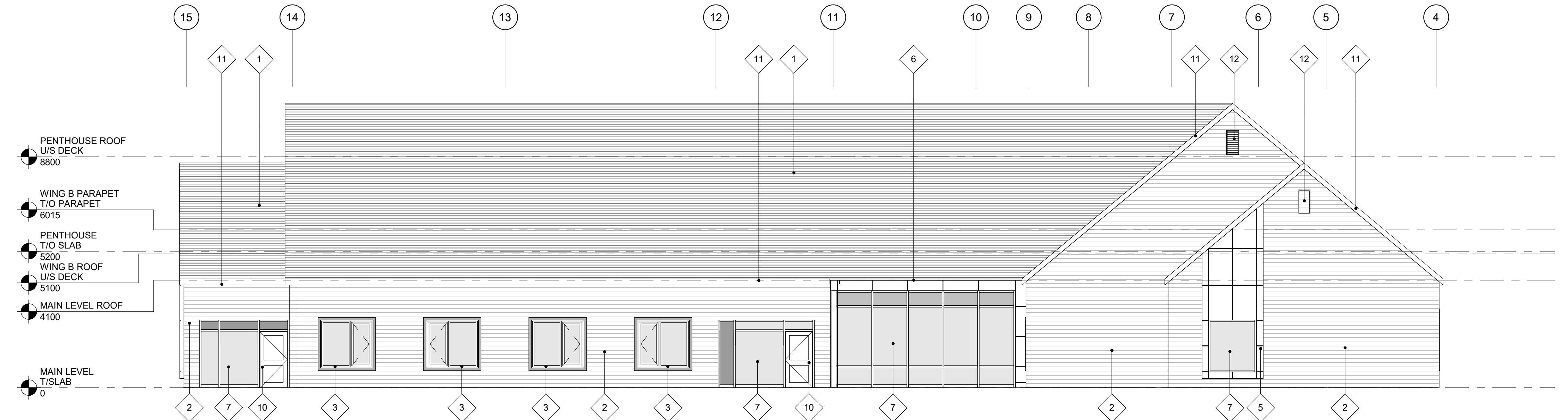
PROJECT NO: 229-00175-00 CONTRACT NO:
DRAWN BY: Author CHECKED BY: Checker APPROVED BY: Approver



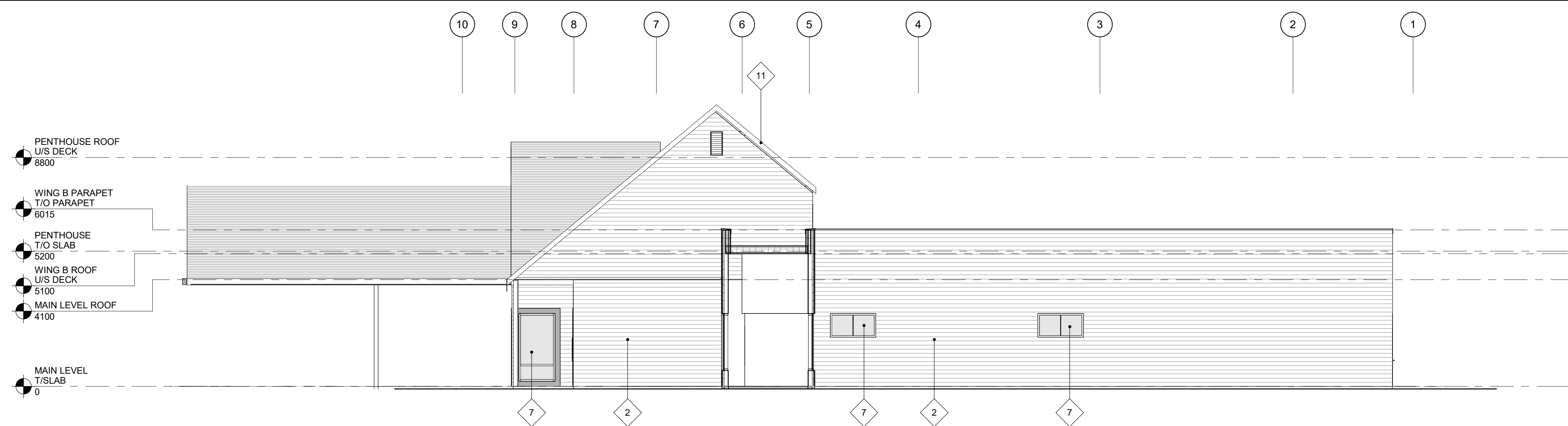
- EXTERIOR MATERIALS LEGEND**
NOTE: EXTERIOR MATERIALS LEGEND TO BE COORDINATED WITH SPECIFICATION FOR ALL TYPES AND COLORS
- 1 METAL STANDING SEAM ROOF
 - 2 VINYL SHAKE SIDING
 - 3 VINYL WINDOWS (COLOUR BLACK/ CHARCOAL GREY)
 - 4 PREFINISHED METAL COMPOSITE PANEL WINDOW BOX
 - 5 PREFINISHED METAL COMPOSITE PANEL
 - 6 PREFINISHED METAL FLASHING
 - 7 CURTAIN WALL SYSTEM AND GLAZING
 - 8 PREFINISHED METAL DOOR
 - 9 PREFINISHED OVERHEAD SECTIONAL DOOR
 - 10 ALUMINIUM DOOR, FRAME AND GLAZING SYSTEM
 - 11 PREFINISHED SOFFIT / FASCIA BOARD
 - 12 PREFINISHED ROOF VENT
 - 13 PLACEHOLDER FOR SIGNAGE
 - 14 CORRUGATED METAL SIDING



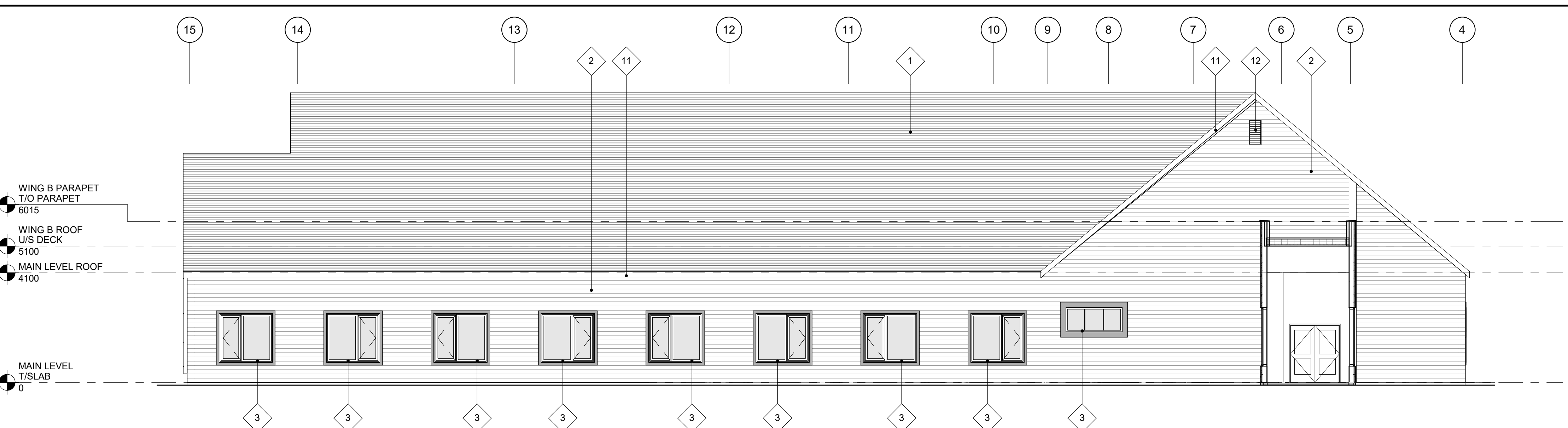
1:200 **1** EXTERIOR ELEVATION - EAST - OVERALL



1:100 **2** EXTERIOR ELEVATION - EAST - WING 'D'



1:100 **3** EXTERIOR ELEVATION - EAST - WING 'B'



1:100 **4** EXTERIOR ELEVATION - EAST - WING 'A'

| | | |
|---|------------|----------------------------------|
| 2 | 2023.08.10 | ISSUED FOR DEVELOPMENT AGREEMENT |
| 1 | 2023.07.21 | ISSUED FOR DD REPORT |
| | | ISSUED |

THE BIRCHES NURSING HOME REPLACEMENT FACILITY

DRAWING TITLE

EXTERIOR ELEVATIONS - EAST

DRAWING NO. **A-202**

PRINT DATE: 2023-08-10 2:09:36 PM

CONSULTANT

CONSULTANT

CLIENT

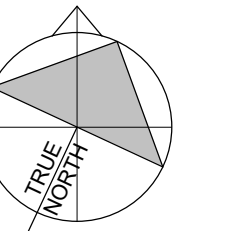
COPYRIGHT NOTICE
THIS DRAWING AND DESIGN IS COPYRIGHT PROTECTED.
DO NOT REPRODUCE OR REVISE WITHOUT WRITTEN
PERMISSION BY ARCHITECTURE49 INC.

SEAL:

**NOT FOR
CONSTRUCTION**

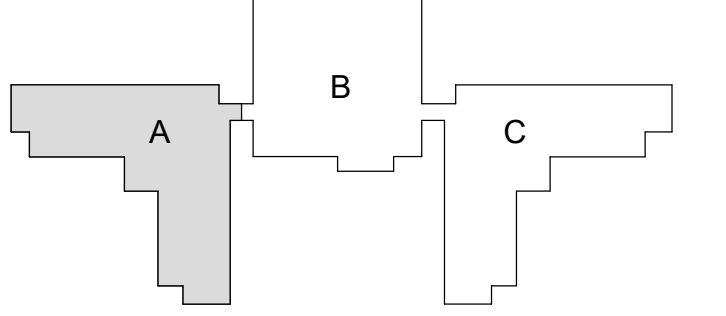
THIS BAR IS 25mm LONG WHEN PLOTTED AT
CORRECT SCALE. DO NOT SCALE DRAWINGS. 25mm

NORTH ARROW: DIGITAL REFERENCE:



PROJECT NO: 229-00175-00 CONTRACT NO:
DRAWN BY: Author CHECKED BY: Checker APPROVED BY: Approver

KEYPLAN:



| | | |
|---|------------|----------------------------------|
| 2 | 2023.08.10 | ISSUED FOR DEVELOPMENT AGREEMENT |
| 1 | 2023.07.21 | ISSUED FOR DD REPORT |
| | | ISSUED |

**THE BIRCHES NURSING
HOME REPLACEMENT
FACILITY**

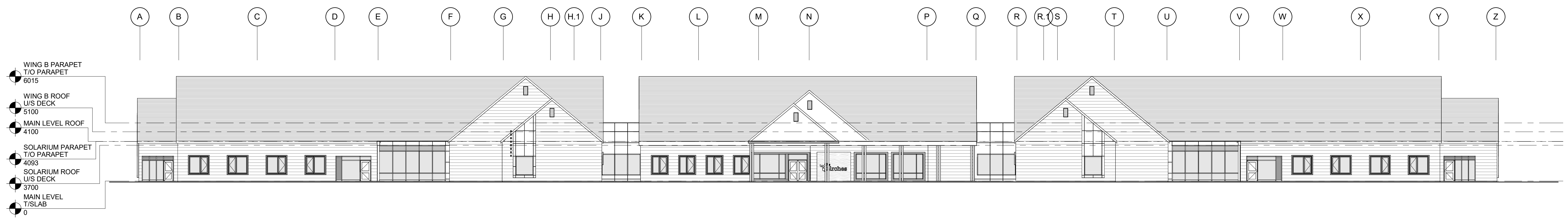
DRAWING TITLE

**EXTERIOR ELEVATIONS
- SOUTH**

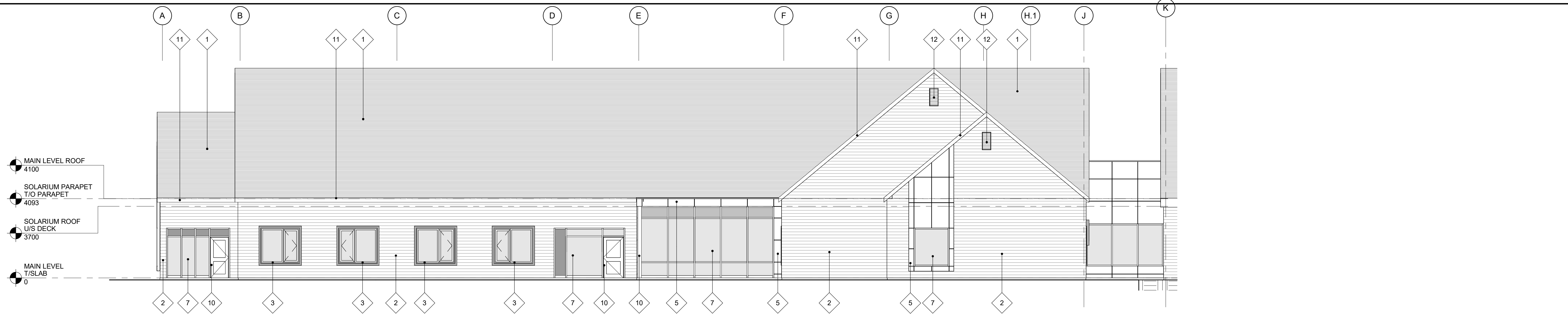
DRAWING NO. **A-203**

PRINT DATE: 2023-08-10 2:11:08 PM

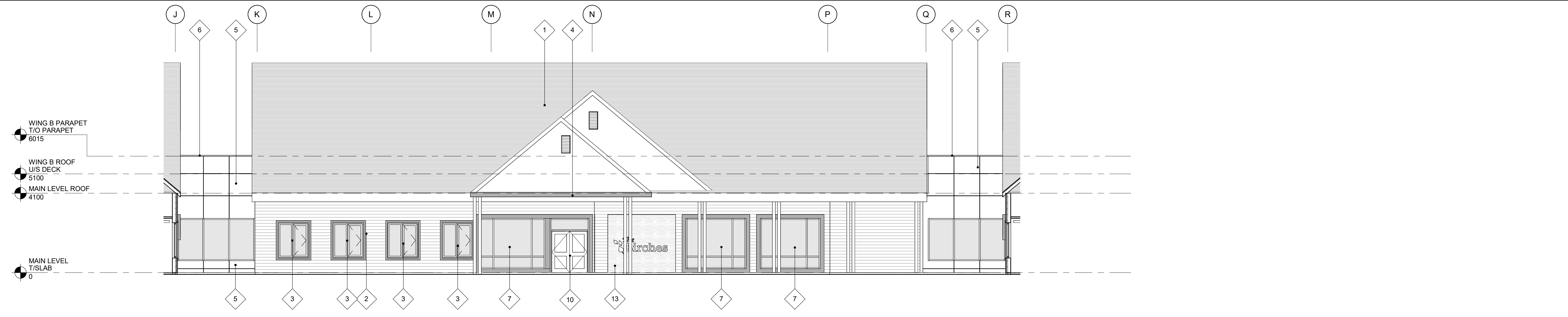
- EXTERIOR MATERIALS LEGEND**
NOTE: EXTERIOR MATERIALS LEGEND TO BE COORDINATED
WITH SPECIFICATION FOR ALL TYPES AND COLORS
- 1 METAL STANDING SEAM ROOF
 - 2 VINYL SHAKE SIDING
 - 3 VINYL WINDOWS (COLOUR BLACK/ CHARCOAL GREY)
 - 4 PREFINISHED METAL COMPOSITE PANEL WINDOW BOX
 - 5 PREFINISHED METAL COMPOSITE PANEL
 - 6 PREFINISHED METAL FLASHING
 - 7 CURTAIN WALL SYSTEM AND GLAZING
 - 8 PREFINISHED METAL DOOR
 - 9 PREFINISHED OVERHEAD SECTIONAL DOOR
 - 10 ALUMINIUM DOOR, FRAME AND GLAZING SYSTEM
 - 11 PREFINISHED SOFFIT / FASCIA BOARD
 - 12 PREFINISHED ROOF VENT
 - 13 PLACEHOLDER FOR SIGNAGE
 - 14 CORRUGATED METAL SIDING



1: 200 **1** EXTERIOR ELEVATION - SOUTH - OVERALL
A-203



1: 100 **2** EXTERIOR ELEVATION - SOUTH - WING 'A'
A-203



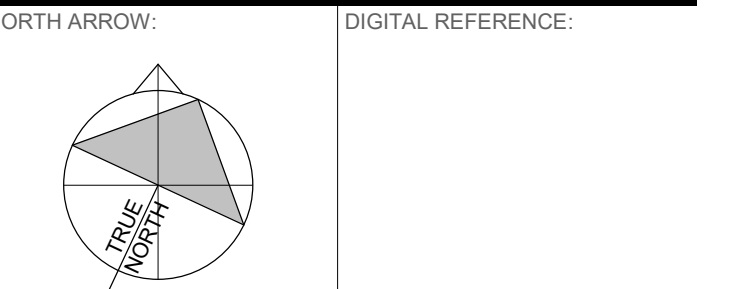
1: 100 **3** EXTERIOR ELEVATION - SOUTH - WING 'B'
A-203



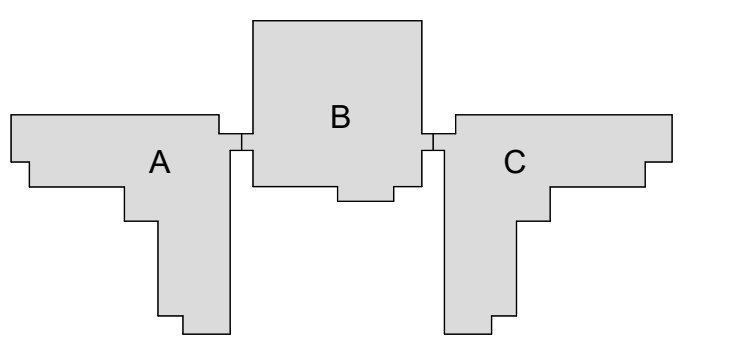
1: 100 **4** EXTERIOR ELEVATION - SOUTH - WING 'C'
A-203

NOT FOR CONSTRUCTION

THIS BAR IS 25mm LONG WHEN PLOTTED AT CORRECT SCALE. DO NOT SCALE DRAWINGS. 25mm



PROJECT NO: 229-00175-00 CONTRACT NO:
DRAWN BY: Author CHECKED BY: Checker APPROVED BY: Approver



| | | |
|-----|------------|----------------------------------|
| 2 | 2023.08.10 | ISSUED FOR DEVELOPMENT AGREEMENT |
| 1 | 2023.07.21 | ISSUED FOR DD REPORT |
| NO. | DATE | ISSUED |

THE BIRCHES NURSING HOME REPLACEMENT FACILITY

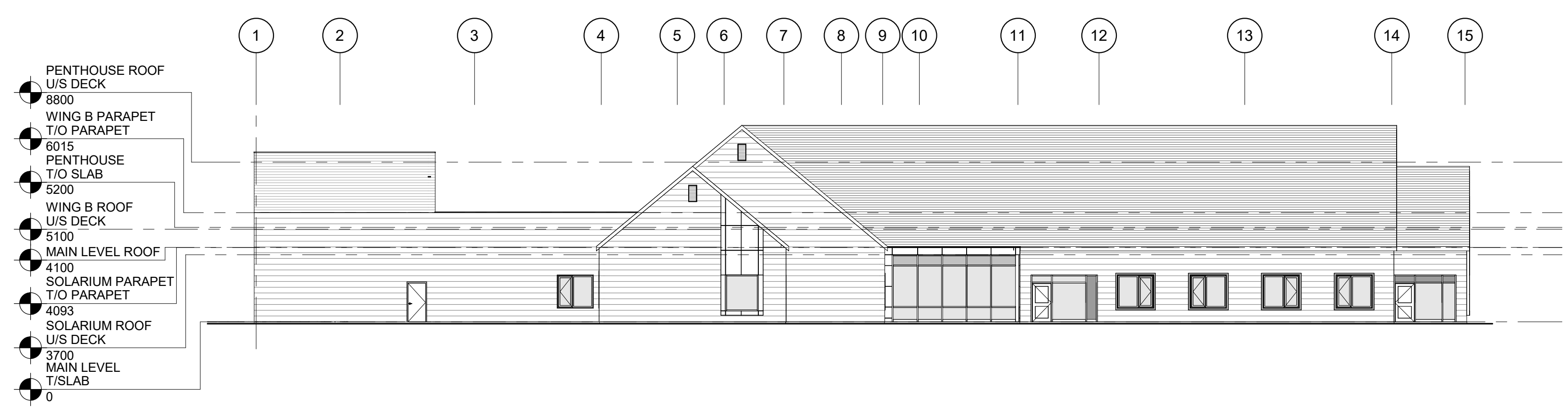
DRAWING TITLE

EXTERIOR ELEVATIONS - WEST

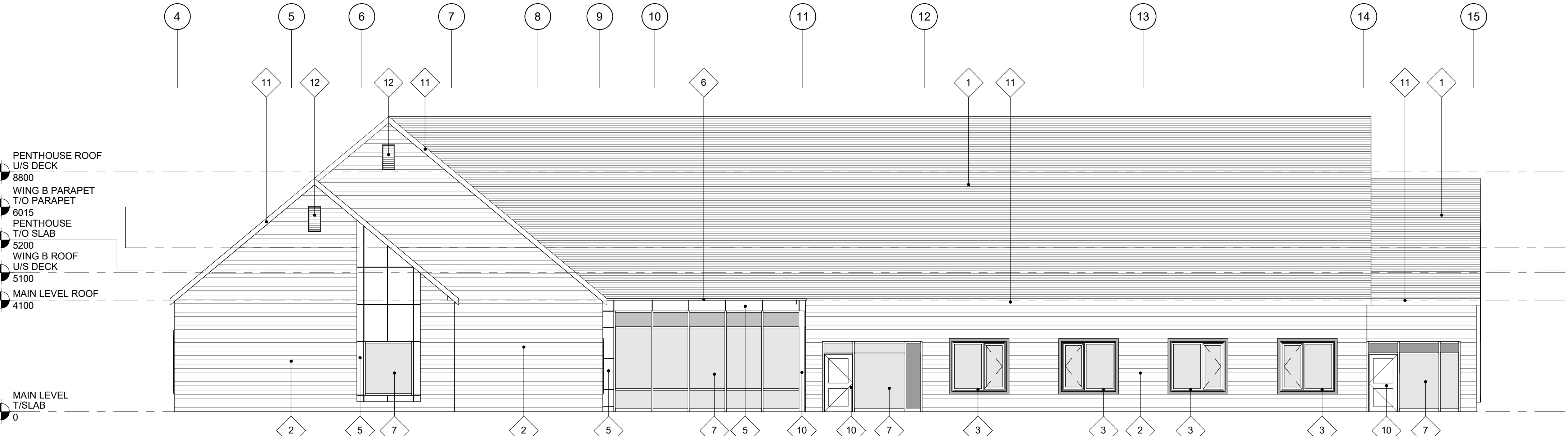
DRAWING NO. **A-204**

PRINT DATE: 2023-08-10 2:13:16 PM

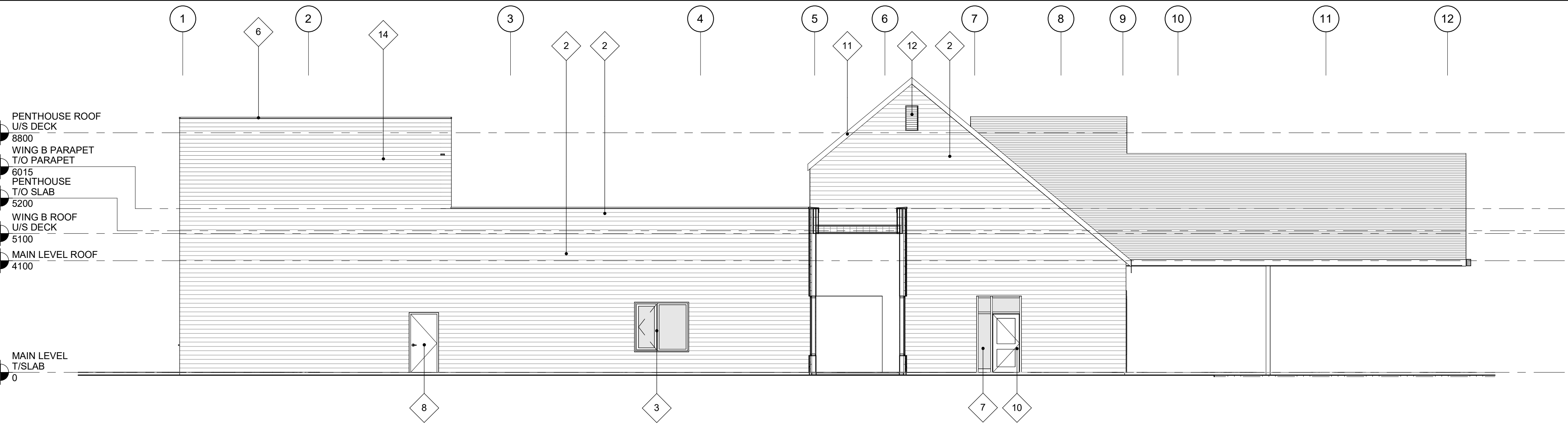
- EXTERIOR MATERIALS LEGEND**
NOTE: EXTERIOR MATERIALS LEGEND TO BE COORDINATED WITH SPECIFICATION FOR ALL TYPES AND COLORS
- 1 METAL STANDING SEAM ROOF
 - 2 VINYL SHAKE SIDING
 - 3 VINYL WINDOWS (COLOUR BLACK/ CHARCOAL GREY)
 - 4 PREFINISHED METAL COMPOSITE PANEL WINDOW BOX
 - 5 PREFINISHED METAL COMPOSITE PANEL
 - 6 PREFINISHED METAL FLASHING
 - 7 CURTAIN WALL SYSTEM AND GLAZING
 - 8 PREFINISHED METAL DOOR
 - 9 PREFINISHED OVERHEAD SECTIONAL DOOR
 - 10 ALUMINIUM DOOR, FRAME AND GLAZING SYSTEM
 - 11 PREFINISHED SOFFIT / FASCIA BOARD
 - 12 PREFINISHED ROOF VENT
 - 13 PLACEHOLDER FOR SIGNAGE
 - 14 CORRUGATED METAL SIDING



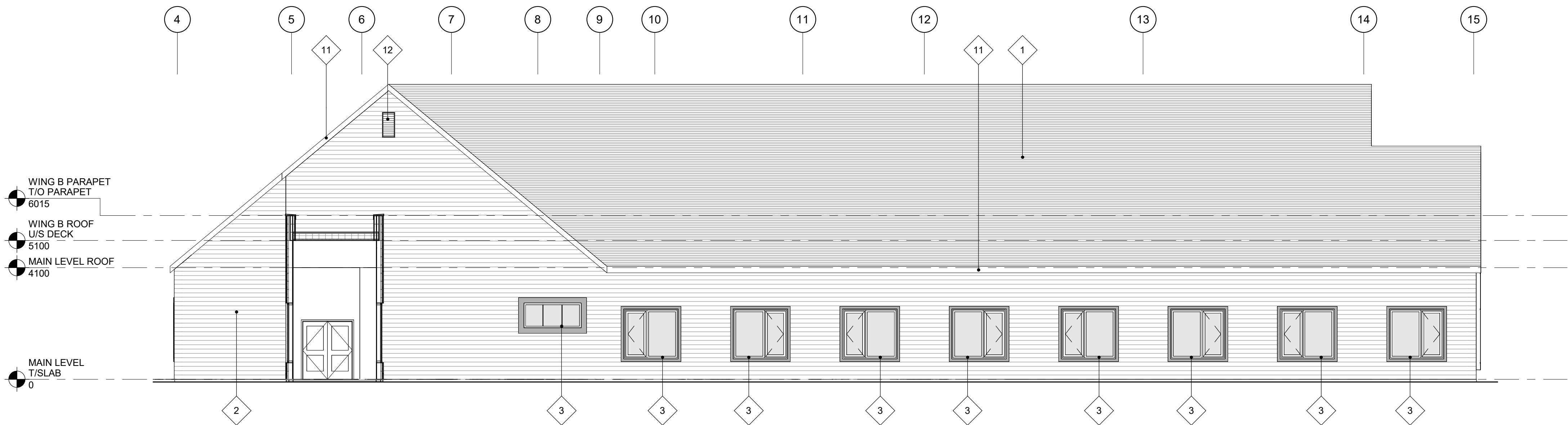
1:200 **1 EXTERIOR ELEVATION - WEST - OVERALL**
A-204



1:100 **2 EXTERIOR ELEVATION - WEST - WING 'A'**
A-204



1:100 **3 EXTERIOR ELEVATION - WEST - WING 'B'**
A-204



1:100 **4 EXTERIOR ELEVATION - WEST - WING 'C'**
A-204