



PO Box 1749  
Halifax, Nova Scotia  
B3J 3A5 Canada

## MEMORANDUM

**TO:** Western Commons Advisory Committee  
**FROM:** Jennifer Chapman, Project Manager – Client and Project Management Services, Property Fleet and the Environment  
**DATE:** November 15, 2023  
**SUBJECT:** **Ragged Lake Watershed Study**

Attention Chair and Members of WCAC,

HRM has procured Dillon Consulting to complete a Watershed Impact Study of the Prospect River Sub-watershed. The project was launched on March 14, 2023. The project is broken into three categories: research, analysis and synthesis. The project is currently in the research phase.

Key deliverables for the research phase are as follows:

- Background information review (complete)
- Review HRM Natural Systems Conservation Study (complete)
- Research and map floodplain hazard lands (complete)
- Develop and undertake a water quality sampling program and baseline study (complete)
- Undertake water quality testing (in progress)

The water quality testing program includes 10 sampling events over 12 months and is anticipated to be completed in May 2024. Once the sampling program is complete, the consultant will move to the analysis phase of the project with the target synthesizing the information into a draft report by May 2025. The draft report will include the following:

- Recommend water quality baseline objectives for key receiving watercourses, including supporting rationale. These recommendations will be consistent with the CCME Guidelines for Water Quality and Sediment Quality for the Protection of Aquatic Life;
- Recommend mitigation and adaptation strategies to reduce flooding hazards to infrastructure and the environment, with an emphasis on natural and green infrastructure;
- Review, recommend, and verify areas that are suitable for development, have potential for development, and are to be avoided by industrial land development, and will build upon those presented in the 2021 Natural Systems Conservation Study; and

---

Client and Project Management Services, Property Fleet and the Environment

- Recommend engineered remedial measures to sustain fresh and marine water quality, prioritizing natural and green infrastructure options where possible, and summarize the potential benefits and limitations to the proposed measures.

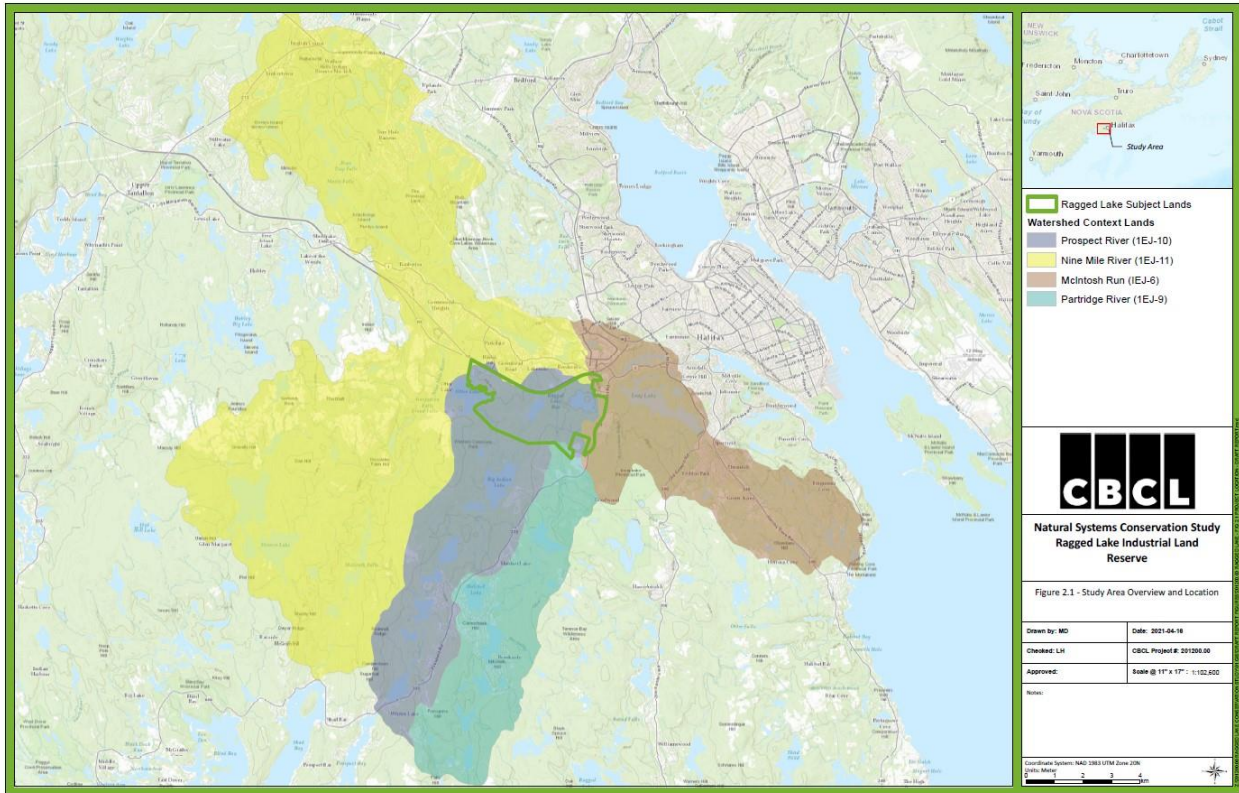


Figure 1: Industrial land reserve and the surrounding sub-watersheds