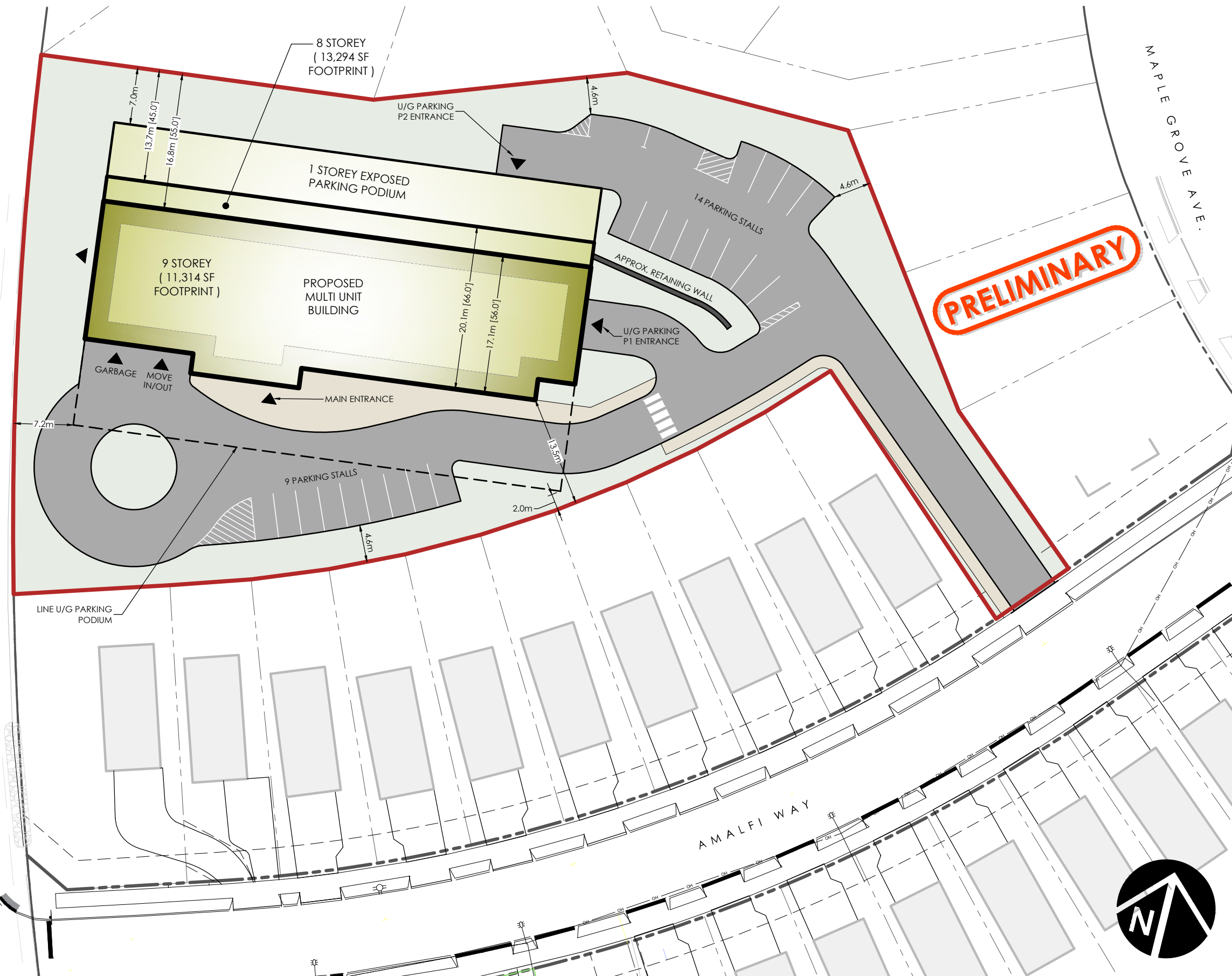


FILE: C:\Users\Ken.Zwickler\Zwickler Architecture & Planning\Projects - 2022\Projects\22-047 Brunello Amalfi Way Multi\4\_Planning\1-DWG\22-047-SITE\_PLAN-106.dwg SHEET: 11x17



**PRELIMINARY**

- LEGEND**
- Site Boundary
  - - - Adjacent Property Boundary
- SITE SUMMARY:**
- Total Land Area: 5,960.7 sm / 1.47 acres
  - Mult Unit Building: 76 Units
  - U/G Parking Provided: 80 stalls
  - Surface Parking Provided: 23 stalls
  - Total Parking Provided: 103 stalls
- NOTES:**
- Subject to survey. Property lines and topographic features are approximate only.
  - Site subject to by-law review and regulations.

**SOURCES:**

- Plan based on file: Marketway 2022-02-07.dwg'

**SCALE:**

0 1 2 3 4 5 10 15 25m  
1 : 500



PROJECT

**AMALFI WAY DEVELOPMENT**  
Timberlea, Nova Scotia

DRAWING

**SITE PLAN**

PROJECT NO. **22-047** DRAWING NUMBER

DRAWN BY: KJW

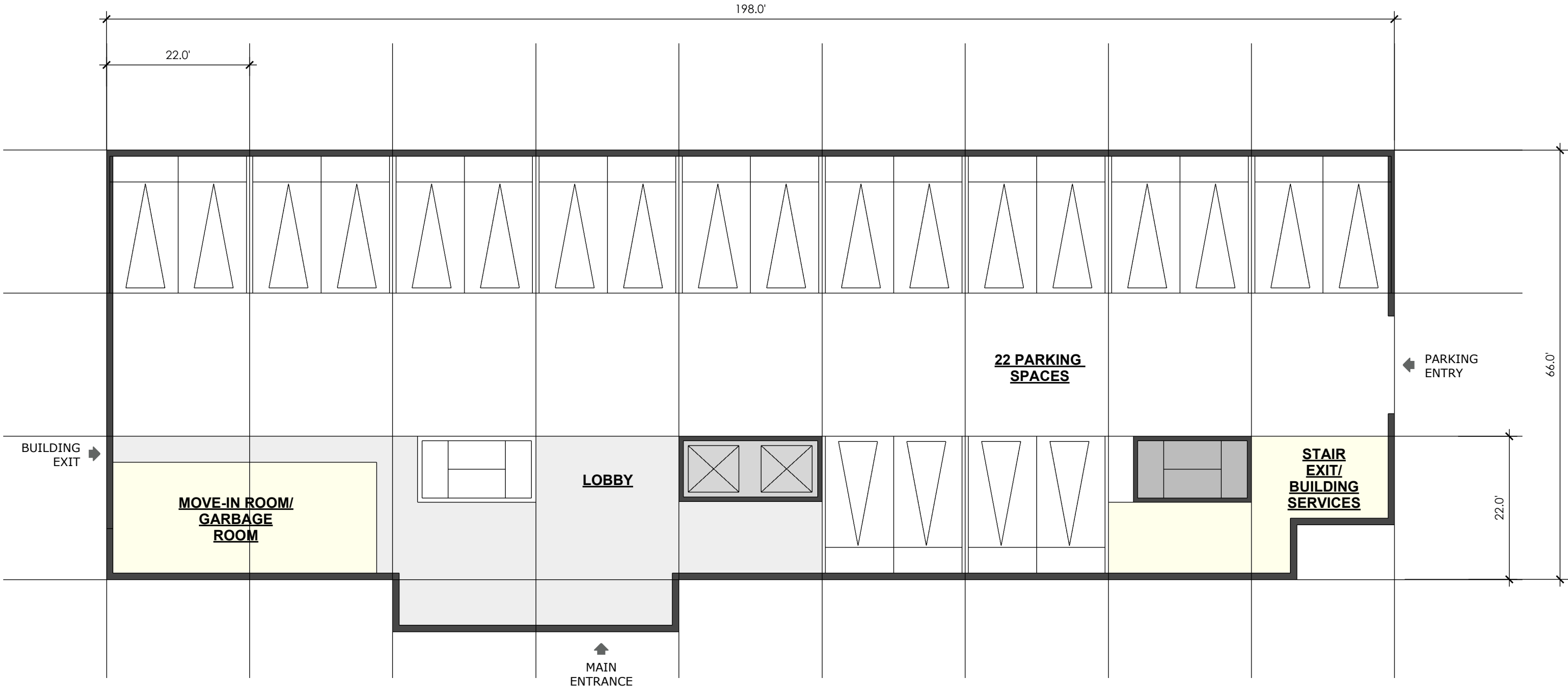
**106**

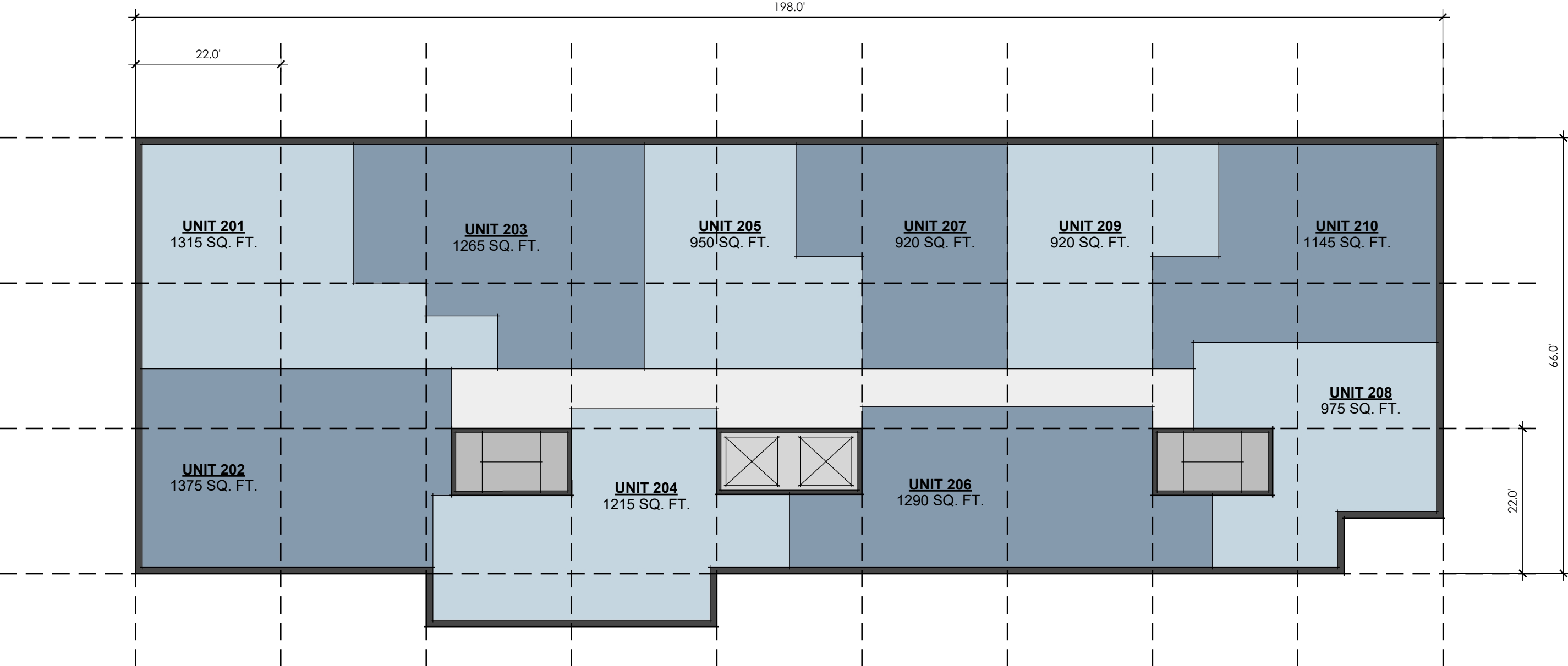
DATE: NOVEMBER 14, 2022

AMALFI WAY DEVELOPMENT / FLOOR PLANS - LEVEL P1

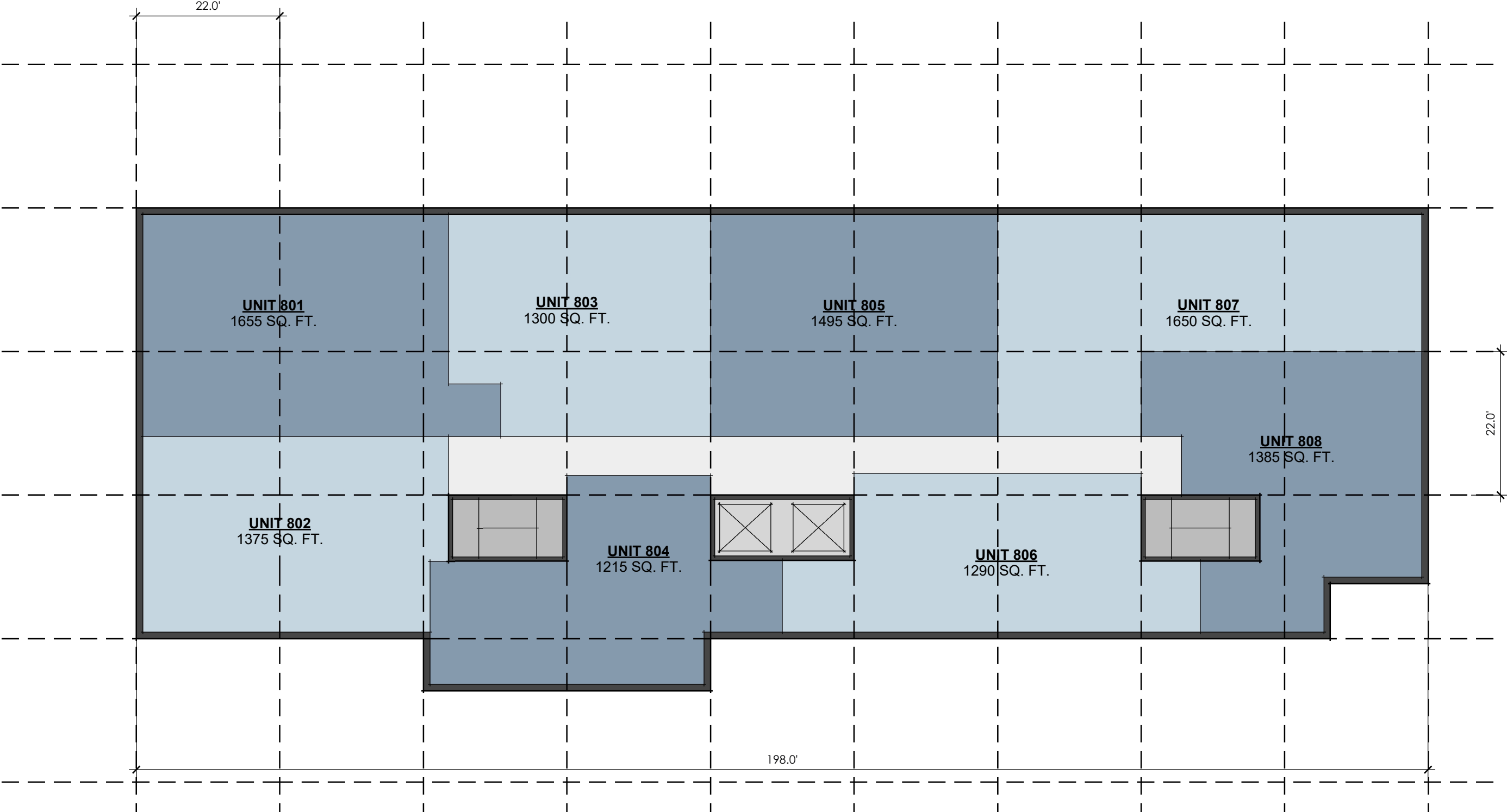


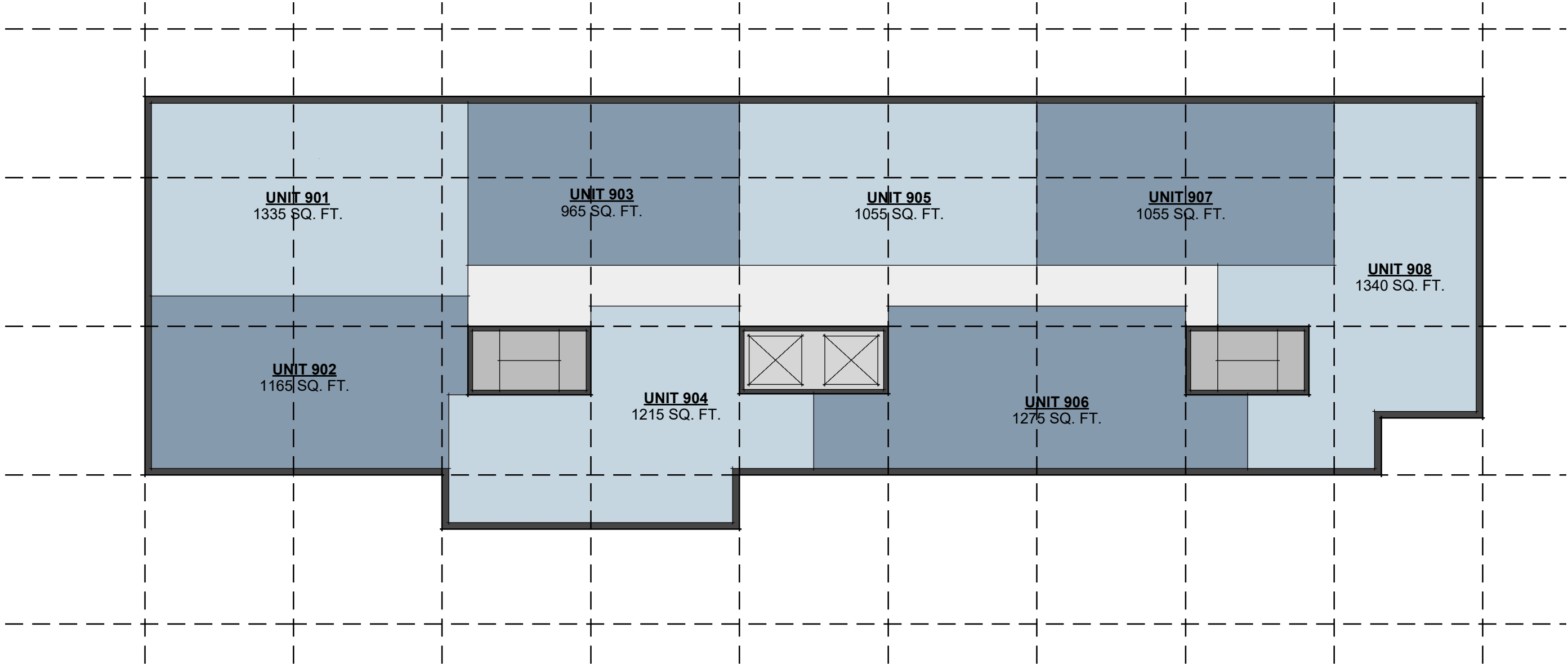
AMALFI WAY DEVELOPMENT / FLOOR PLANS - LEVEL 1





AMALFI WAY DEVELOPMENT / FLOOR PLANS - LEVEL 8

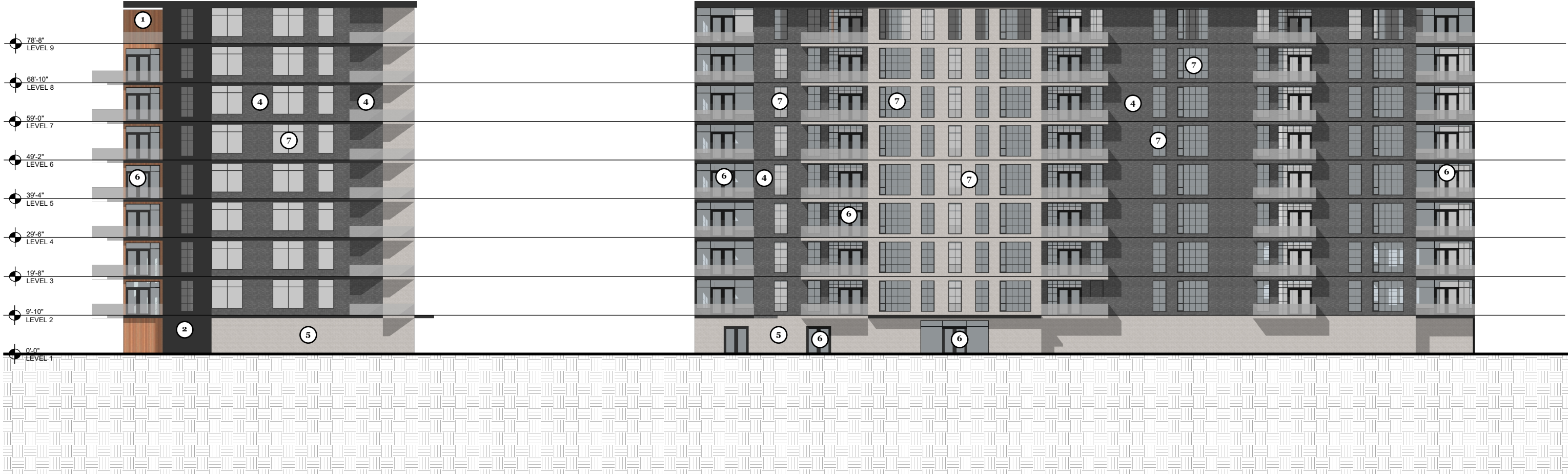




SCALE 1/16" = 1'-0"



AMALFI WAY DEVELOPMENT / ELEVATIONS

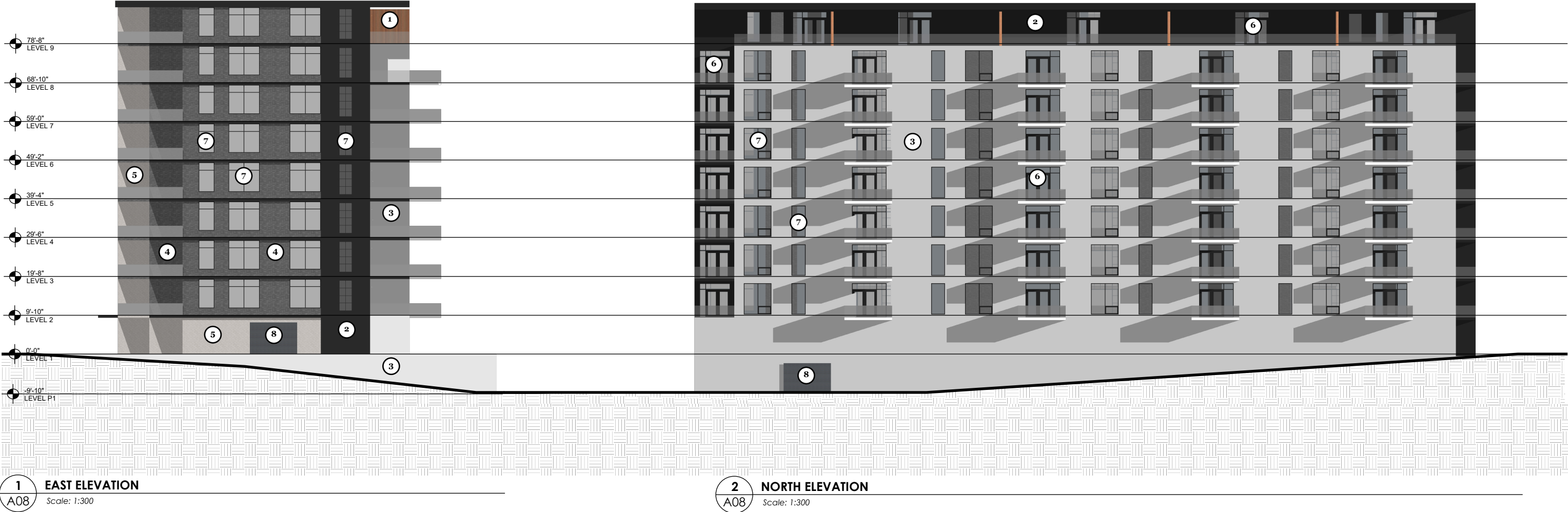


**1 WEST ELEVATION**  
A07 Scale: 1:300

**2 SOUTH ELEVATION**  
A07 Scale: 1:300

EXTERIOR MATERIALS LEGEND	
1	PREFINISHED ENGINEERED CLADDING TYPE A
2	PREFINISHED ENGINEERED CLADDING TYPE B
3	PREFINISHED ENGINEERED CLADDING TYPE C
4	MASONRY VENER TYPE 1
5	MASONRY VENER TYPE 2
6	PVC/ALUMINUM PATIO DOOR
7	PVC/ALUMINUM WINDOW
8	GARAGE DOOR

AMALFI WAY DEVELOPMENT / ELEVATIONS



**1 EAST ELEVATION**  
A08 Scale: 1:300

**2 NORTH ELEVATION**  
A08 Scale: 1:300

EXTERIOR MATERIALS LEGEND	
1	PREFINISHED ENGINEERED CLADDING TYPE A
2	PREFINISHED ENGINEERED CLADDING TYPE B
3	PREFINISHED ENGINEERED CLADDING TYPE C
4	MASONRY VENER TYPE 1
5	MASONRY VENER TYPE 2
6	PVC/ALUMINUM PATIO DOOR
7	PVC/ALUMINUM WINDOW
8	GARAGE DOOR





