

KEY PLAN

LEGEND		
EXISTING		PROPOSED
--- 25.0 ---	CONTOUR LINE	--- 25.0 ---
⊙/⊙BF	CURB STOP/GATE/BUTTERFLY VALVE	⊙/⊙BF
⊙	FIRE HYDRANT	⊙
◁	CONCRETE THRUST BLOCK	◁
↔	SIAMESE CONNECTION	↔
■/■/■	CATCH BASIN/PIT	■/■/■
---	CULVERT	---
⊕/⊕	ROCK LINING/DAM	⊕/⊕
▬▬▬	ROCK WALL/RETAINING WALL	▬▬▬
⊕/⊕	POWER POLE & ANCHOR/LIGHT STANDARD	⊕/⊕
⊙	TREE	⊙
⊕/⊕	STREET SIGN/PARKING METER	⊕/⊕
× 131.82	ELEVATION/GRADE	125.00 × / + 125.00
⊕	TEST PIT	⊕
→	DRAINAGE/SWALE FLOW DIRECTION	→
W	WATER MAIN/SERVICE	W
● SAN	SANITARY MANHOLE & PIPE	● SAN
○ STM	STORM MANHOLE & PIPE	○ STM
SAV/STM	COMBINED SEWER	SAV/STM
FM	FORCE MAIN	FM
GAS	GAS LINE	GAS
FL	100YR. FLOOD LIMIT	FL
U	GUARD RAIL	U
C	UNDERGROUND COMMUNICATIONS	C
P	UNDERGROUND POWER	P
---	OVERHEAD WIRES	---
---	PROPERTY LINE/BOUNDARY	---
---	FENCE	---
---	BUILDING	---
---	TOP OF SLOPE	---
---	TOE OF SLOPE	---
---	TREELINE	---
---	LIMITS OF DISTURBANCE	---

- NOTES**
- EXISTING WATER, STORM & SANITARY SEWER, U/G CONDUIT AND GAS UNDERGROUND PIPING BASED ON HRM GIS SEWER DATA AND HERITAGE GAS INFORMATION. CONTRACTOR TO VERIFY EXACT LOCATIONS AND ELEVATIONS IN THE FIELD.
 - PROPERTY BOUNDARIES HAVE BEEN COMPILED FROM VARIOUS SOURCES AND ARE SUBJECT TO SURVEY.
 - ALL WORK SHALL BE COMPLETED IN ACCORDANCE WITH NOVA SCOTIA REGULATIONS AND HRM BY-LAWS, HALIFAX WATER DESIGN AND CONSTRUCTION SPECIFICATIONS (LATEST EDITION) AND HRM MUNICIPAL SERVICE SYSTEM GUIDELINES "RED BOOK" (LATEST EDITION).
 - CONTRACTOR TO DISCONNECT, PLUG AND ABANDON EXISTING WATER SERVICE LATERALS FOR CIVIC NO 247 MAIN STREET AT THE MAIN. CONTRACTOR TO REMOVE VALVE BOXES AND VALVES/SHUT OFFS AFTER THE LATERALS HAVE BEEN DISCONNECTED FROM MAIN.
 - CONTRACTOR TO CAP AND ABANDON ALL EXISTING SEWER LATERALS FOR CIVIC NO. 247 MAIN STREET AT THE MAIN.
 - ROOF FLOW CONTROL DRAINS WILL CONTROL POST DEVELOPMENT STORM FLOWS TO PRE-DEVELOPMENT LEVELS.

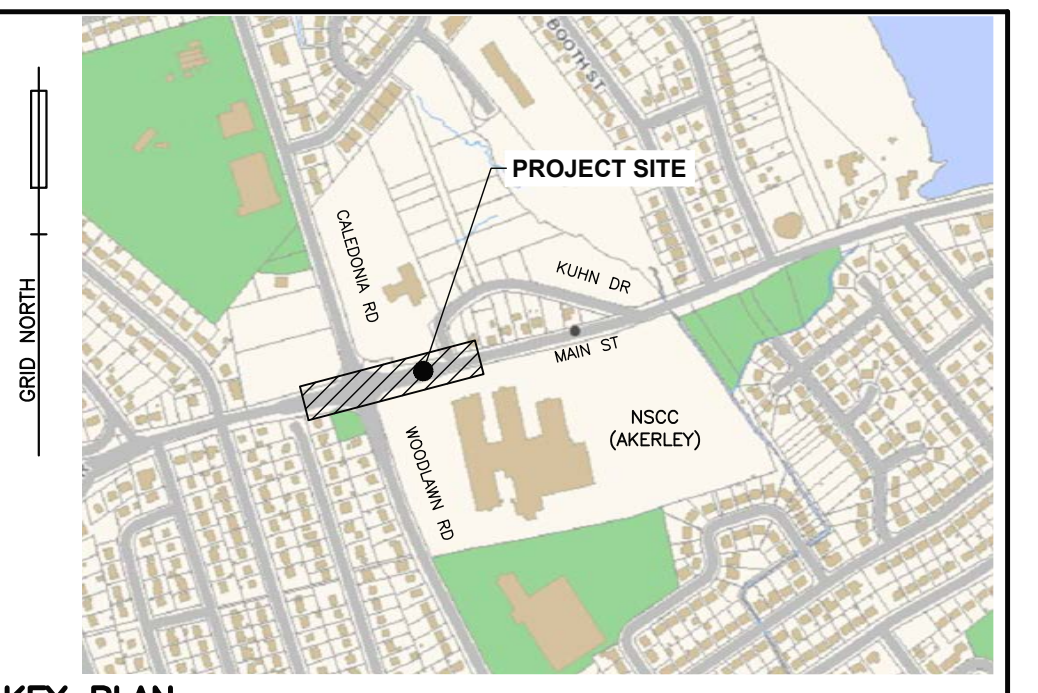
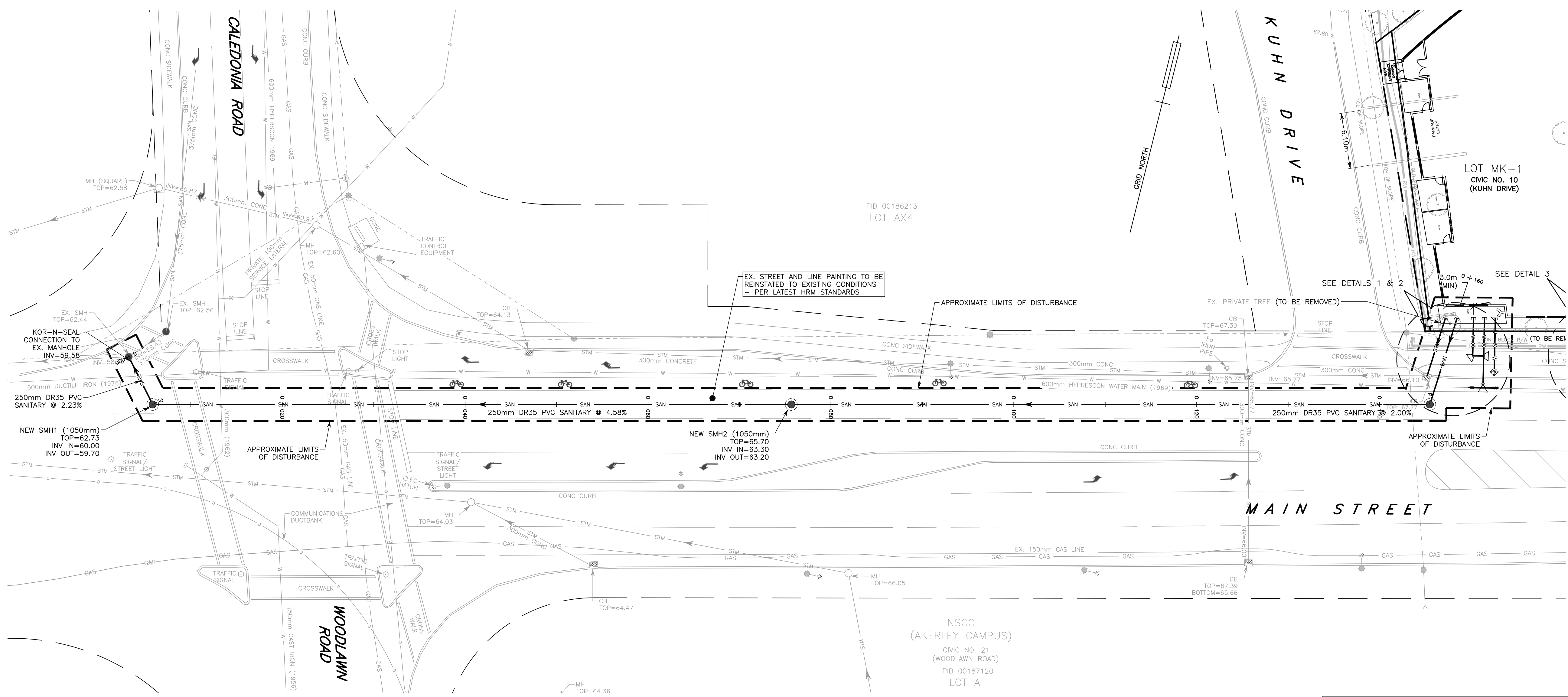
No.	YY/MM/DD	Revision	Description	Appr'd
2	23/04/27	REISSUED FOR DEVELOPMENT AGREEMENT		
1	22/12/13	ISSUED FOR DEVELOPMENT AGREEMENT		
0	22/05/16	ISSUED FOR REVIEW		

**SANITARY SEWER EXTENSION
247 MAIN STREET
DARTMOUTH, NOVA SCOTIA**

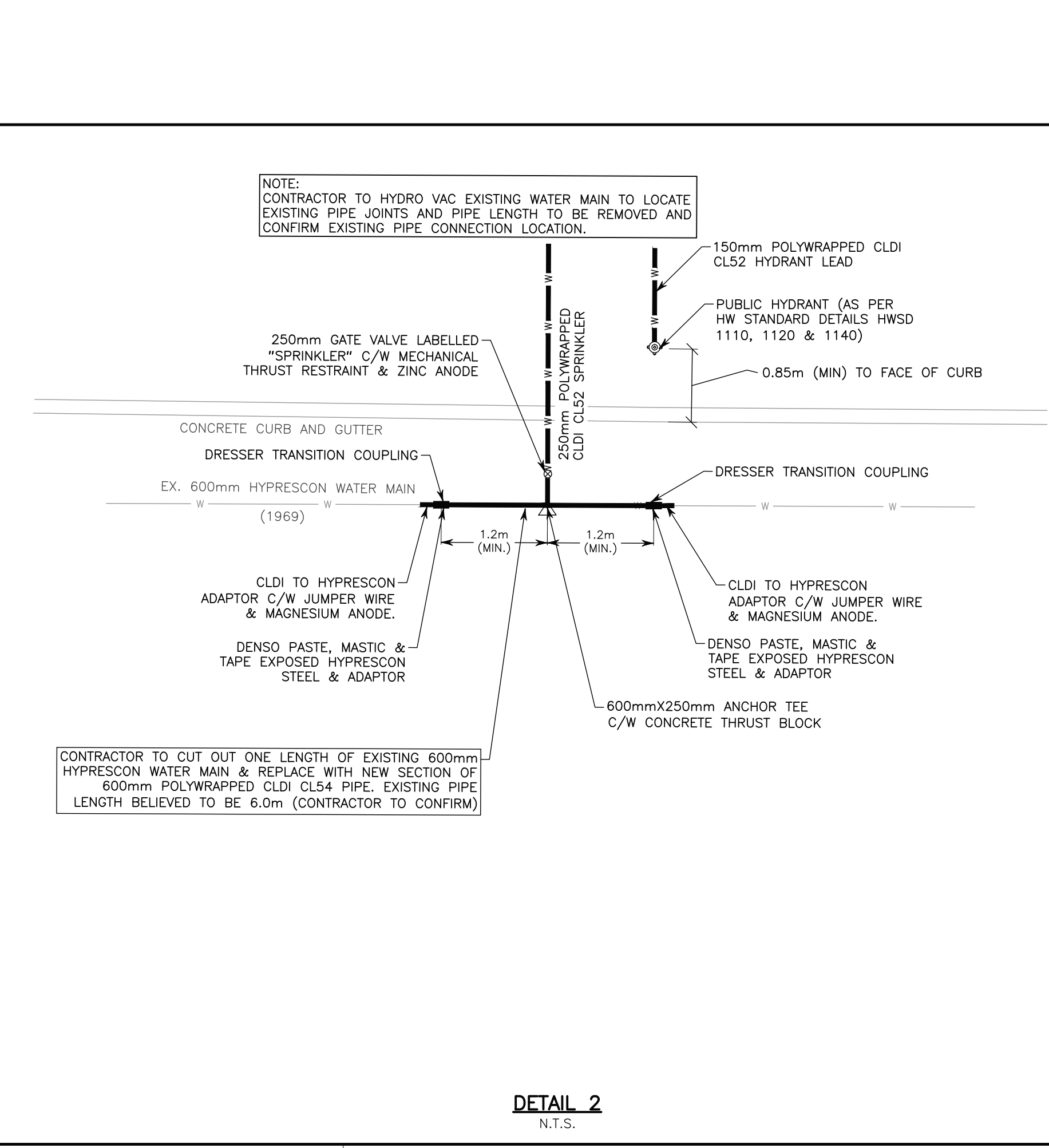
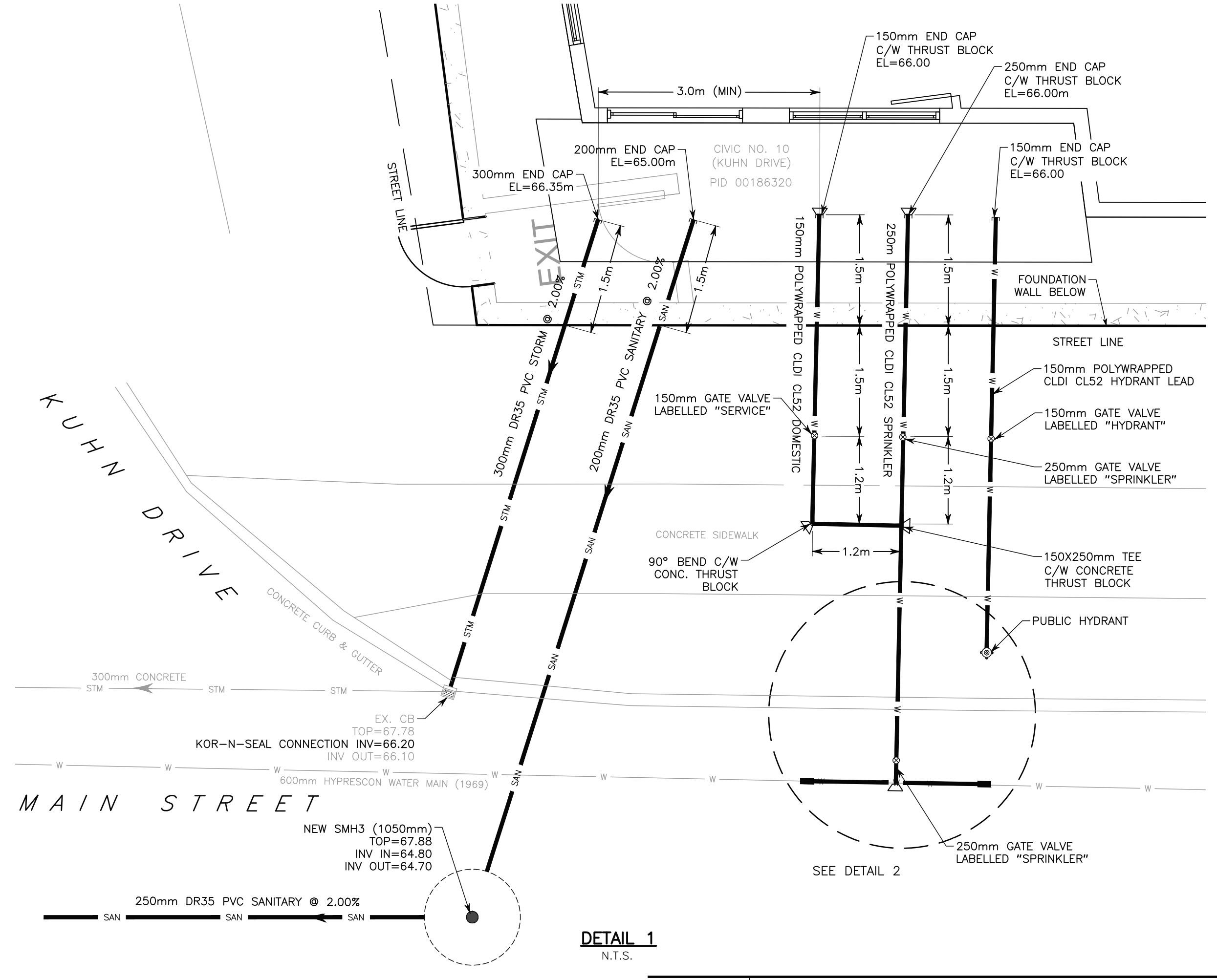
BUILDING SERVICING SCHEMATIC

Date DECEMBER 13, 2022	Drawn S. SOO	Project No. FILE NO. 1-6-323 (36964)
Scale 1:250	Engineer A. PULSIFER	Plan No.
Reference ---	Approved A. PULSIFER	Drawing Name
Surveyed SDMM	Sheet	CO





EXISTING		LEGEND		PROPOSED	
25.0	CONTOUR LINE	25.0	CONTOUR LINE	25.0	CONTOUR LINE
⊙/⊙BF	CURB STOP/GATE/BUTTERFLY VALVE	⊙/⊙BF	CURB STOP/GATE/BUTTERFLY VALVE	⊙/⊙BF	CURB STOP/GATE/BUTTERFLY VALVE
⊙	FIRE HYDRANT	⊙	FIRE HYDRANT	⊙	FIRE HYDRANT
⊙	CONCRETE THRUST BLOCK	⊙	CONCRETE THRUST BLOCK	⊙	CONCRETE THRUST BLOCK
⊙	SIAMSESE CONNECTION	⊙	SIAMSESE CONNECTION	⊙	SIAMSESE CONNECTION
⊙	CATCH BASIN/PIT	⊙	CATCH BASIN/PIT	⊙	CATCH BASIN/PIT
⊙	CULVERT	⊙	CULVERT	⊙	CULVERT
⊙	ROCK LINING/DAM	⊙	ROCK LINING/DAM	⊙	ROCK LINING/DAM
⊙	ROCK WALL/RETAINING WALL	⊙	ROCK WALL/RETAINING WALL	⊙	ROCK WALL/RETAINING WALL
⊙	POWER POLE & ANCHOR/LIGHT STANDARD	⊙	POWER POLE & ANCHOR/LIGHT STANDARD	⊙	POWER POLE & ANCHOR/LIGHT STANDARD
⊙	TREE	⊙	TREE	⊙	TREE
⊙	STREET SIGN/PARKING METER	⊙	STREET SIGN/PARKING METER	⊙	STREET SIGN/PARKING METER
⊙	ELEVATION/GRADE	⊙	ELEVATION/GRADE	⊙	ELEVATION/GRADE
⊙	TEST PIT	⊙	TEST PIT	⊙	TEST PIT
⊙	DRAINAGE/SWALE FLOW DIRECTION	⊙	DRAINAGE/SWALE FLOW DIRECTION	⊙	DRAINAGE/SWALE FLOW DIRECTION
⊙	WATER MAIN/SERVICE	⊙	WATER MAIN/SERVICE	⊙	WATER MAIN/SERVICE
⊙	SANITARY MANHOLE & PIPE	⊙	SANITARY MANHOLE & PIPE	⊙	SANITARY MANHOLE & PIPE
⊙	STORM MANHOLE & PIPE	⊙	STORM MANHOLE & PIPE	⊙	STORM MANHOLE & PIPE
⊙	COMBINED SEWER	⊙	COMBINED SEWER	⊙	COMBINED SEWER
⊙	FORCE MAIN	⊙	FORCE MAIN	⊙	FORCE MAIN
⊙	GAS LINE	⊙	GAS LINE	⊙	GAS LINE
⊙	100YR. FLOOD LIMIT	⊙	100YR. FLOOD LIMIT	⊙	100YR. FLOOD LIMIT
⊙	GUARD RAIL	⊙	GUARD RAIL	⊙	GUARD RAIL
⊙	UNDERGROUND COMMUNICATIONS	⊙	UNDERGROUND COMMUNICATIONS	⊙	UNDERGROUND COMMUNICATIONS
⊙	UNDERGROUND POWER	⊙	UNDERGROUND POWER	⊙	UNDERGROUND POWER
⊙	OVERHEAD WIRES	⊙	OVERHEAD WIRES	⊙	OVERHEAD WIRES
⊙	PROPERTY LINE/BOUNDARY	⊙	PROPERTY LINE/BOUNDARY	⊙	PROPERTY LINE/BOUNDARY
⊙	FENCE	⊙	FENCE	⊙	FENCE
⊙	BUILDING	⊙	BUILDING	⊙	BUILDING
⊙	TOP OF SLOPE	⊙	TOP OF SLOPE	⊙	TOP OF SLOPE
⊙	TOE OF SLOPE	⊙	TOE OF SLOPE	⊙	TOE OF SLOPE
⊙	TREELINE	⊙	TREELINE	⊙	TREELINE
⊙	LIMITS OF DISTURBANCE	⊙	LIMITS OF DISTURBANCE	⊙	LIMITS OF DISTURBANCE



NOTES

- REFER TO C2 FOR CONSTRUCTION NOTES & DETAILS.
- REFER TO C3 FOR SERVICE PROFILE.

No.	YY/MM/DD	Revision	Description	Appr'd
2	23/04/27	REISSUED FOR DEVELOPMENT AGREEMENT		
1	22/12/13	ISSUED FOR DEVELOPMENT AGREEMENT		
0	22/05/16	ISSUED FOR REVIEW		

SDMM

Servant, Dumbrack, McKenzie & MacDonald Ltd.

NOVA SCOTIA LAND SURVEYORS & CONSULTING ENGINEERS

10473

36 OLAND CRESCENT
BAYERS LAKE BUSINESS PARK
HALIFAX, NS B3S 1G6

PHONE: (902) 455-1537
FAX: (902) 455-8479
WEB: WWW.SDMM.CO

**SANITARY SEWER EXTENSION
247 MAIN STREET
DARTMOUTH, NOVA SCOTIA**

SERVICING PLAN			
Date	May 16, 2022	Drawn	S. SOO
Scale	1:250	Engineer	A. PULSIFER
Reference	--	Approved	A. PULSIFER
Surveyed	SDMM	Sheet	
Project No.	FILE NO. 1-6-323 (36964)	Plan No.	
Drawing Name	C1		



HALIFAX REGIONAL MUNICIPALITY STANDARD DETAILS

HRM No.	
1	PAVEMENT STRUCTURE
11	SUBURBAN (ARTERIAL)
38	URBAN TRAFFIC SIGN POST
44	URBAN SIDEWALK
48	CONCRETE SIDEWALK REINFORCING
49	PEDESTRIAN RAMP ALIGNMENT
52	CONCRETE TRAFFIC ISLAND
53	CONCRETE CURB AND GUTTER
54	CURB RENEWAL/PAYMENT DETAILS
59	SHALLOW TRENCH REINSTATEMENT
60	DEEP TRENCH REINSTATEMENT
61	TRENCH BACKFILL & REINSTATEMENT-TESTING
78	UNDERGROUND CONDUIT
89	STANDARD INTERSECTION PAVEMENT MARKING LAYOUT
90	LONGITUDINAL AND TRANSVERSE PAVEMENT MARKINGS
91	PAVEMENT ARROWS
92	BICYCLE SYMBOL AND SHARED USE LANE SYMBOL
93	PEDESTRIAN & TRAIL CROSSING PAVEMENT MARKING LAYOUT
189	BICYCLE PAVEMENT MARKINGS
190	BICYCLE LANE CONFLICT MARKINGS

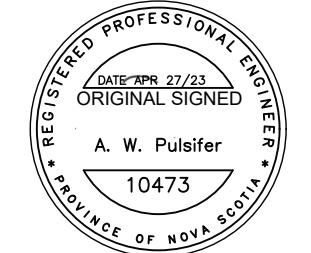
HALIFAX WATER STANDARD DETAILS

HWSD No.	
1000	TYPICAL TRENCH PAYMENT WIDTH (WATER, WASTEWATER & STORMWATER SYSTEMS)
1010	TYPICAL TRENCH DETAIL WATER SYSTEM INSTALLATION (WATER ONLY)
1020	POLYETHYLENE ENCASEMENT ON DUCTILE IRON WATER MAINS
1040	ZINC ANODE FOR VALVES AND COPPER SERVICE CONNECTIONS
1070	THRUST BLOCK REQUIREMENTS
1080	CONCRETE THRUST BLOCK
1110	HYDRANT INSTALLATION DETAIL
1120	HYDRANT LOCATION IN RELATION TO DRIVEWAYS & OTHER UTILITY STRUCTURES
1140	HYDRANT PAINTING
1210	TYPICAL DOMESTIC & SPRINKLER CONNECTIONS AS SEPARATE SERVICE CONNECTION
1250	REQ. MIN. CLEARANCES BTW U/G CONDUITS AND WATER SYSTEM
1400	NATURAL GAS INSTALLATION SEPARATIONS (POLYETHYLENE MAIN)
1440	TRENCH AND BACKFILL CROSS SECTION
1450	PRECAST MANHOLE
1460	MANHOLE FRAME AND COVER


NOTES:

- THIS DRAWING SHALL BE READ IN CONJUNCTION WITH ARCHITECTURAL, STRUCTURAL, MECHANICAL AND ELECTRICAL DRAWINGS. ANY DISCREPANCIES MUST BE BROUGHT TO THE ENGINEER'S ATTENTION IMMEDIATELY.
- CONTRACTOR SHALL NOTIFY SDMM 48 HOURS PRIOR TO THE START OF CONSTRUCTION TO SCHEDULE A PRECONSTRUCTION MEETING AND ARRANGE SUBSEQUENT SITE INSPECTIONS FOR DATA COLLECTION REQUIRED TO PREPARE RECORDS OF NEW WATER, STORMWATER AND WASTEWATER SERVICES AS PER HALIFAX WATER (HW) SPECIFICATIONS.**
- CONTRACTOR TO OBTAIN AND PAY FOR HALIFAX REGIONAL MUNICIPALITY (HRM) STREET & SERVICES PERMITS PRIOR TO CONSTRUCTION AND NOTIFY HRM AND HW OF SCHEDULED STREET WORK AT LEAST 48 HOURS PRIOR TO COMMENCING CONSTRUCTION. CONTRACTOR TO PAY FOR ALL HW INSPECTION FEES PRIOR TO WATER METER APPLICATION. CONTRACTOR MUST PAY FOR ALL SDMM FEES ASSOCIATED WITH ANY REPEAT SITE INSPECTIONS RESULTING FROM FAILED TESTS.
- EXISTING WATER, STORMWATER AND WASTEWATER UNDERGROUND PIPING IS BASED ON INFORMATION OBTAINED FROM HW; SDMM DOES NOT TAKE RESPONSIBILITY FOR THE INFORMATION RECEIVED FROM OTHERS. CONTRACTOR TO VERIFY EXACT LOCATION AND ELEVATION IN THE FIELD AND NOTIFY THE ENGINEER IF SITE CONDITIONS DIFFER FROM THOSE SHOWN ON THE APPROVED DESIGN DRAWINGS.
- CONTRACTOR TO CONTACT ALL UTILITY COMPANIES (HALIFAX WATER, BELL ALIANT, EASTLINK, NS POWER INC., HERITAGE GAS, ETC.) TO CONFIRM IF ANY UNDERGROUND SERVICES EXIST IN THE VICINITY OF PROPOSED WORK PRIOR TO EXCAVATION.
- EXISTING SITE TOPOGRAPHIC INFORMATION SURVEYED BY SDMM. ELEVATIONS REPRESENT EXISTING SITE GRADES PRIOR TO CONSTRUCTION - CONTACT SDMM FOR LOCAL SURVEY CONTROL.
- PROPERTY BOUNDARIES HAVE BEEN COMPILED AND ARE APPROXIMATE ONLY; BOUNDARIES HAVE NOT BEEN CONFIRMED BY SURVEY.
- CONTRACTOR MUST PREVENT EROSION OR SILTATION OF SURFACE RUNOFF FROM LEAVING THE CONSTRUCTION SITE THROUGH THE USE OF EROSION AND SEDIMENTATION CONTROLS (SEE NSE EROSION AND SEDIMENTATION CONTROL HANDBOOK FOR CONSTRUCTION SITES). CONSTRUCTION OR EXCAVATION DEWATERING TO MUNICIPAL SEWER SYSTEMS MUST ADHERE TO HALIFAX WATER REGULATIONS.
- ALL WORK SHALL BE COMPLETED IN ACCORDANCE WITH NOVA SCOTIA REGULATIONS AND HRM BY-LAWS, HW DESIGN AND CONSTRUCTION SPECIFICATIONS (LATEST EDITION) AND HRM MUNICIPAL SERVICE SYSTEM GUIDELINES "RED BOOK" (LATEST EDITION), AND HALIFAX WATER REGULATIONS.
- ALL CONSTRUCTION ACTIVITIES MUST BE SCHEDULED TO MINIMIZE SERVICE/PUBLIC ACCESS INTERRUPTION.
- THE PROPOSED WASTEWATER & STORMWATER SEWER, MANHOLES AND CATCH BASINS SHALL BE INSTALLED AS PER THE HW DESIGN AND CONSTRUCTION SPECIFICATIONS (LATEST EDITION). SEWER MANHOLES SHALL BE PRECAST 1050mm DIAMETER (MIN.) C/W BENCHING AND IMP R10 FRAME AND COVERS UNLESS OTHERWISE REQUIRED. PUBLIC MANHOLES INSTALLED OFF ASPHALT SHALL HAVE R-12 FRAMES AND COVERS. WASTEWATER MANHOLES SHALL BE WRAPPED IN BLUESKIN COMPLETE WITH CONCRETE ADJUSTMENT AS PER HW SPECIFICATIONS. CATCH BASINS TO BE 1050mm (MIN.) DIAMETER COMPLETE WITH FRAME AND GRATE; IMP S441 (AREA), IMP S361 (CURB), PYRAMID (IN LANDSCAPED AREAS) OR APPROVED EQUAL.
- PROPOSED CONCRETE STORMWATER AND WASTEWATER SEWERS SHALL CONFORM TO A.S.T.M C-78 (CLASS III). PROPOSED DRAIN PVC STORMWATER AND WASTEWATER SEWERS SHALL CONFORM TO CSA 182.1.
- WASTEWATER SERVICE LATERAL TO HAVE MINIMUM OF 2% SLOPE OR AS NOTED.
- WASTEWATER AND STORMWATER SERVICE LATERALS, FROM BUILDING TO MAIN, SHALL BE VIDEO INSPECTED BY CONTRACTOR. CONTRACTOR TO PROVIDE DIGITAL COPIES OF VIDEO INSPECTION COMPLETE WITH REPORT IN ACCORDANCE WITH HW SPECIFICATIONS TO THE ENGINEER, PRIOR TO THE WATER METER APPLICATION, FOR VERIFICATION.
- WASTEWATER SERVICE LATERAL (PIPE AND MANHOLES), FROM BUILDING TO MAIN, SHALL BE LEAKAGE TESTED (LOW PRESSURE AIR) AS PER HW STANDARD SPECIFICATIONS.
- ALL WATER SERVICE FITTINGS AND BENDS SHALL HAVE THRUST RESTRAINTS AS PER HW STANDARDS. SPRINKLER & WATER SERVICES SHALL BE CEMENT LINED DUCTILE IRON (CLDI) CLASS 52 COMPLETE WITH POLYETHYLENE ENCASEMENT UNLESS NOTED OTHERWISE. DOMESTIC SERVICES, LESS THAN 100mm DIA, SHALL BE TYPE K COPPER COMPLETE WITH PIPE WRAP INSULATION FROM CORPORATION STOP TO BUILDING. ALL NEW WATER SERVICES & FITTINGS TO BE INSTALLED WITH A MINIMUM OF 1.6m OF GROUND COVER. CONTRACTOR TO FOLLOW THE HW DESIGN AND CONSTRUCTION SPECIFICATIONS (LATEST EDITION) FOR INSTALLATION DETAILS.
- WHEN CROSSING SEWERS WITH A WATER SERVICE, CONTRACTOR SHALL PROVIDE A MINIMUM 450mm VERTICAL SEPARATION BETWEEN BOTTOM OF WATER SERVICE AND TOP OF SEWER. CONTRACTOR TO MAINTAIN A MINIMUM, 300mm VERTICAL AND 300mm HORIZONTAL, SEPARATION BETWEEN WATER AND SEWER SERVICES WHEN RUNNING SERVICE LATERALS PARALLEL IN THE SAME TRENCH. IF VERTICAL SEPARATIONS CANNOT BE MET AT CROSSINGS, CONTRACTOR SHALL PROVIDE CARRIER PIPE TO ISOLATE PIPES AND MAINTAIN A MINIMUM OF 150mm OF VERTICAL SEPARATION. CONTRACTOR TO PROVIDE H-40 RIGID INSULATION BETWEEN WATER SERVICES AND MANHOLES WHEN WITHIN 1.2m; 500mm MINIMUM SEPARATION BETWEEN WATER SERVICES AND MANHOLES SHALL BE MAINTAINED AS PER HW SPECIFICATIONS.
- WHEN INSTALLING WATER AND SEWER SERVICES NEAR GAS LINES, UNDERGROUND ELECTRICAL CONDUIT, STEAM OR HOT WATER PIPING, TRANSFORMER PADS, UTILITY POLES OR OTHER UTILITIES; SEWER SERVICES SHALL MAINTAIN 1.5m HORIZONTAL SEPARATION; WHEREAS WATER SERVICES SHALL MAINTAIN 2.0m HORIZONTAL SEPARATION UNLESS THE WATER SERVICE IS 50MM OR SMALLER, IN WHICH CASE 1.5m HORIZONTAL SEPARATION IS REQUIRED.
- FINAL GRADING SHALL BE CONSTRUCTED TO ENSURE POSITIVE DRAINAGE OF STORMWATER AWAY FROM BUILDINGS. UNLESS OTHERWISE STATED, CONSTRUCTED GRADES SHALL BE A MINIMUM OF 2% TO A MAXIMUM OF 3% (EXCEPT FOR ROCK FACES/RETAINING WALLS). ALL DISTURBED AREAS SHALL BE FINISHED WITH EITHER CONCRETE OR ASPHALT, TOPSOIL AND SEED OR SOD.
- ELEVATIONS AND SITE GRADINGS SHALL BE CONFIRMED BY CONTRACTOR WITH ENGINEER PRIOR TO CONSTRUCTION.
- CONTRACTOR TO SAW CUT EXISTING ASPHALT AND REINSTATE ADJACENT TO NEW DRIVEWAY ENTRANCE AND/OR CURB AS PER HRM DETAIL HRM54 AND THE ASPHALT REINSTATEMENT DETAILS HRM59, 60 & 61. CONTRACTOR SHALL COORDINATE AND PROVIDE REQUIRED GEOTECHNICAL CERTIFICATION TO HRM, REGARDLESS OF ASPHALT THICKNESS. CONTRACTOR TO REINSTATE ASPHALT WITH A MINIMUM 100mm NEW ASPHALT THICKNESS FOR LOCAL ROADS AND STREETS; FOR HIGHER CLASSIFICATIONS OF ROADS AND STREETS FOLLOW HRM STANDARD ASPHALT THICKNESS.

2	23/04/27	REISSUED FOR DEVELOPMENT AGREEMENT	
1	22/12/13	ISSUED FOR DEVELOPMENT AGREEMENT	
0	22/05/16	ISSUED FOR REVIEW	
No.	YY/MM/DD	Revision Description	Appr'd



A. W. Pulsifer
10473



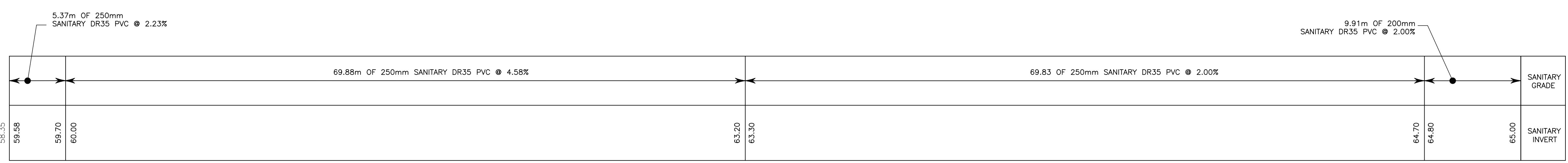
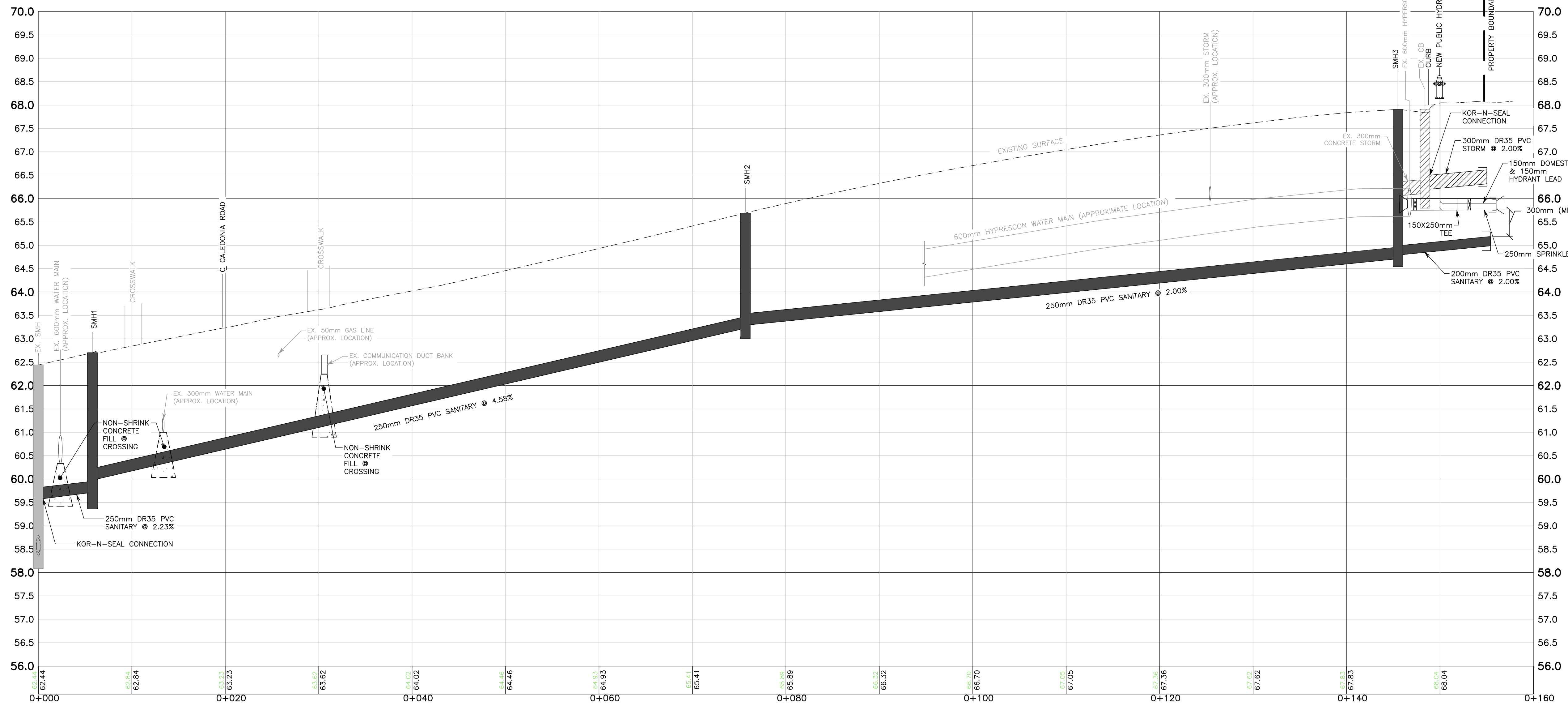
SDMM
Servant, Durbrack, McKenzie & MacDonald Ltd.
NOVA SCOTIA LAND SURVEYORS & CONSULTING ENGINEERS

36 OLAND CRESCENT
BAKERS LAKE BUSINESS PARK
HALIFAX, NS B3S 1G6

PHONE: (902) 455-1537
FAX: (902) 455-8479
WEB: www.sdmm.ns.ca

SANITARY SEWER EXTENSION
247 MAIN STREET
DARTMOUTH, NOVA SCOTIA

CONSTRUCTION NOTES AND DETAILS			
Date	Drawn	Project No.	FILE NO. 1-6-323 (36964)
MAY 16, 2022	S. SOO		
Scale	Engineer	Plan No.	Drawing Name
N.T.S	A. PULSIFER		
Reference	Approved		C2
--	A. PULSIFER		
Surveyed	Sheet		
SDMM			



SERVICE PROFILE
SCALE= HORIZ: 1:250
VERT: 1:50

LEGEND		
PROFILE		
EXISTING	GROUND	PROPOSED
[Symbol]	SANITARY	[Symbol]
[Symbol]	STORM	[Symbol]
[Symbol]	WATER	[Symbol]
[Symbol]	FOAM INSULATION	[Symbol]
[Symbol]	PIPE CROSSING	[Symbol]
[Symbol]	WATER VALVE	[Symbol]
[Symbol]	THRUST BLOCK	[Symbol]
[Symbol]	END CAP	[Symbol]

No.	YY/MM/DD	Revision	Description	Appr'd
2	23/04/27	REISSUED FOR DEVELOPMENT AGREEMENT		
1	22/12/13	ISSUED FOR DEVELOPMENT AGREEMENT		
0	22/05/16	ISSUED FOR REVIEW		

REGISTERED PROFESSIONAL ENGINEER
ORIGINAL SIGNED
A. W. Pulsifer
10473
PROVINCE OF NOVA SCOTIA

SDMM
Servant, Dunbrack, McKenzie & MacDonald Ltd.
NOVA SCOTIA LAND SURVEYORS & CONSULTING ENGINEERS
36 OLAND CRESCENT
BAKERS LAKE BUSINESS PARK
HALIFAX, NS B3S 1G5
PHONE: (902) 455-1537
FAX: (902) 455-8479
WEB: www.sdmm.ns.ca

SANITARY SEWER EXTENSION
247 MAIN STREET
DARTMOUTH, NOVA SCOTIA

SERVICE PROFILE

Date	MAY 16, 2022	Drawn	S. SOO	Project No.	FILE NO. 1-6-323 (36964)
Scale	AS NOTED	Engineer	A. PULSIFER	Plan No.	
Reference	--	Approved	A. PULSIFER	Drawing Name	
Surveyed	SDMM	Sheet			C3