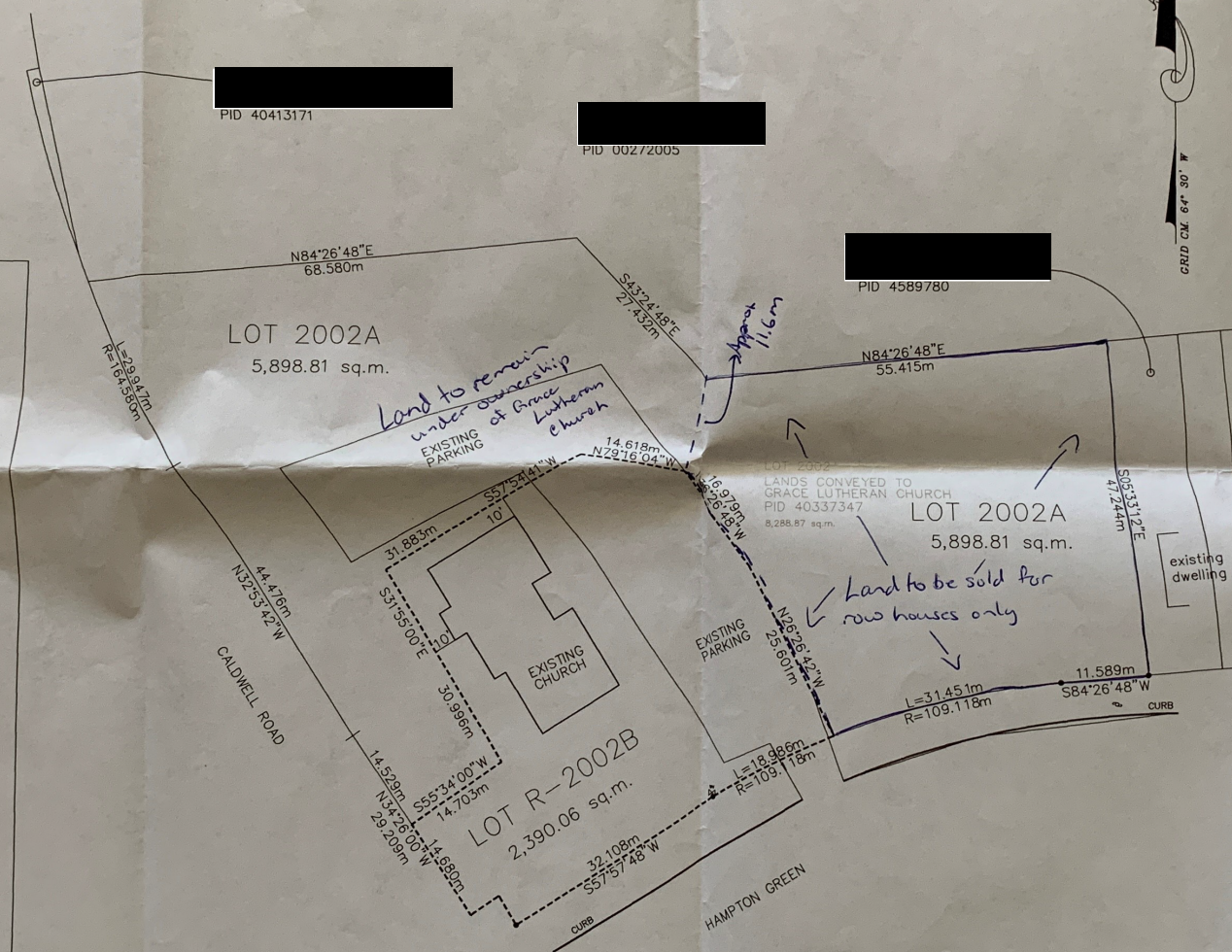


PLAN REFERENCES:

1. PLAN OF SURVEY OF LOTS 2001 TO 2005 INCL., PARCEL - 1 AND PARCEL - 2 SUBDIVISION OF BLOCK - DG, PORTION OF LAND ACQUIRED BY CLAYTON DEVELOPMENTS DEVELOPMENTS LIMITED. PREPARED BY SERVANT, DUNBRACK, MCKENZIE & MACDONALD LTD DATED: MARCH 29th, 1985

DEED REFERENCE:

1. LOT 2002. LANDS CONVEYED TO GRACE LUTHERAN CHURCH REGISTERED IN BOOK 5436, PAGE 851 AT THE HALIFAX COUNTY REGISTRY OF DEEDS



KEY PLAN
SCALE: NTS

LEGEND:

- LANDS DEALT WITH BY THIS SURVEY
- NOVA SCOTIA CO-ORDINATE MONUMENT
- SURVEY MARKER
- ROCK POST
- IRON BAR
- IRON PIPE
- FOUND, WITNESS, NOT TO SCALE
- PLAN, DEED
- CALCULATED FROM FIELD MEASUREMENTS
- ORDINARY HIGH WATER MARK
- THE LINE, TOTAL
- BEGINNING OF CURVE, END OF CURVE
- POINT OF COMMON CURVATURE, POINT OF REVERSE CURVATURE
- RADIUS, ARC, CHORD
- BUILDING
- POWER POLE, MANHOLE
- FIRE HYDRANT, CATCH BASIN
- NOTES :
- △ N.S.C.M.
 - S.M.
 - R.P.
 - I.B.
 - ⊙ I.P.
 - Fd. W.L. (N.T.S.)
 - (P), (D)
 - calc
 - O.H.W.M.
 - (T/L) (T)
 - S.C., E.C.
 - P.C.C., P.R.C.
 - R, A, C
 - ⊙ P.P., ⊙ M.H.
 - F.H. □ C.B.

PRELIMINARY PLAN OF SURVEY OF
LOT 2002A
 BEING A SUBDIVISION OF LOT 2000
 LANDS OF
GRACE LUTHERAN CHURCH
 CALDWELL ROAD AND HAMPTON GREEN, COLE HARBOUR
 HALIFAX REGIONAL MUNICIPALITY, NOVA SCOTIA

SURVEYORS CERTIFICATE

I, THOMAS F. GIOVANNETTI, NOVA SCOTIA LAND SURVEYOR, HEREBY CERTIFY THAT THE SURVEY REPRESENTED BY THIS PLAN WAS CONDUCTED UNDER MY SUPERVISION, AND THAT THE SURVEY AND PLAN WERE MADE IN ACCORDANCE WITH THE NOVA SCOTIA LAND SURVEYORS ACT AND THE REGULATIONS MADE THEREUNDER.

DATED THIS 21 ST DAY OF AUGUST 2014

NOVA SCOTIA LAND SURVEYOR 598

CIVTECH ENGINEERING & SURVEYING LIMITED
 P.O. Box 3237, D.E.P.S., DARTMOUTH
 NOVA SCOTIA, B2W 5G2, 434-4600

NO.	REVISION/REMARKS	DATE	SCALE:
			1: 500
DRAWN BY: A. STEVENS			CHECKED BY: T. GIOVANNETTI
			14161PRE