



Bruce Street Development



Bruce Street Development

3D VIEW

ASK1

TOTAL FOOTPRINT: 8,980SF

- COMMERCIAL: 5,200SF
- LOBBY: 340SF
- AMMENITY: 910SF
- SERVICES: 1,090SF



Bruce Street Development

GROUND LEVEL

ASK2

TOTAL FOOTPRINT: 9,050SF

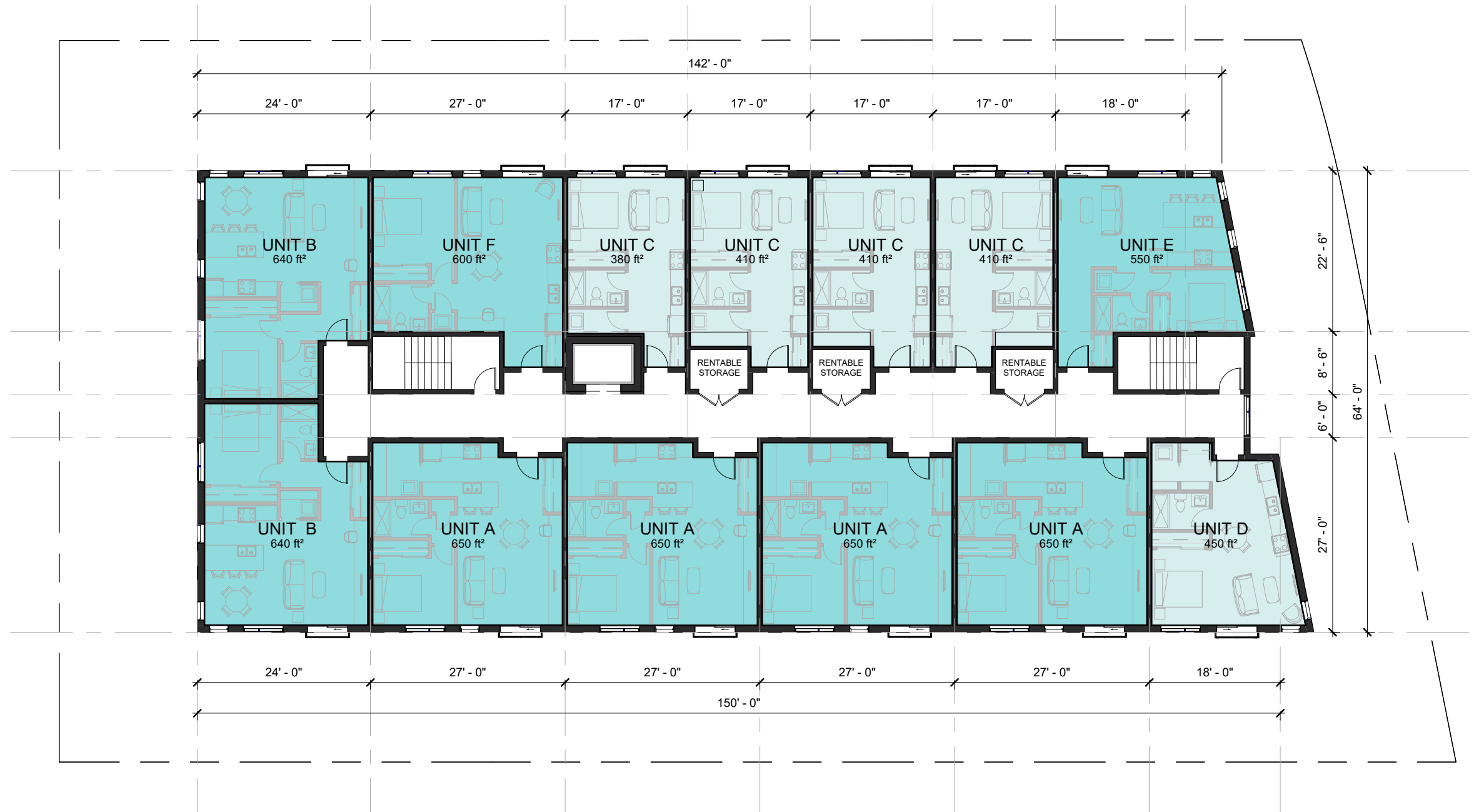
- BACHELOR x 5 2,050SF
- 1 BED x 8 5,030SF



Bruce Street Development

TOTAL FOOTPRINT: 9,050SF

- BACHELOR x 5 2,050SF
- 1 BED x 8 5,030SF



Bruce Street Development

Primary external buildings materials will be a mix of siding of various dimensions, direction and colour above the first level and a robust masonry type at the ground floor. Exact colours, texture and ratios of all elements shown are for inspiration only and may vary depending on availability and cost at the time of permitting.



EAST ELEVATION



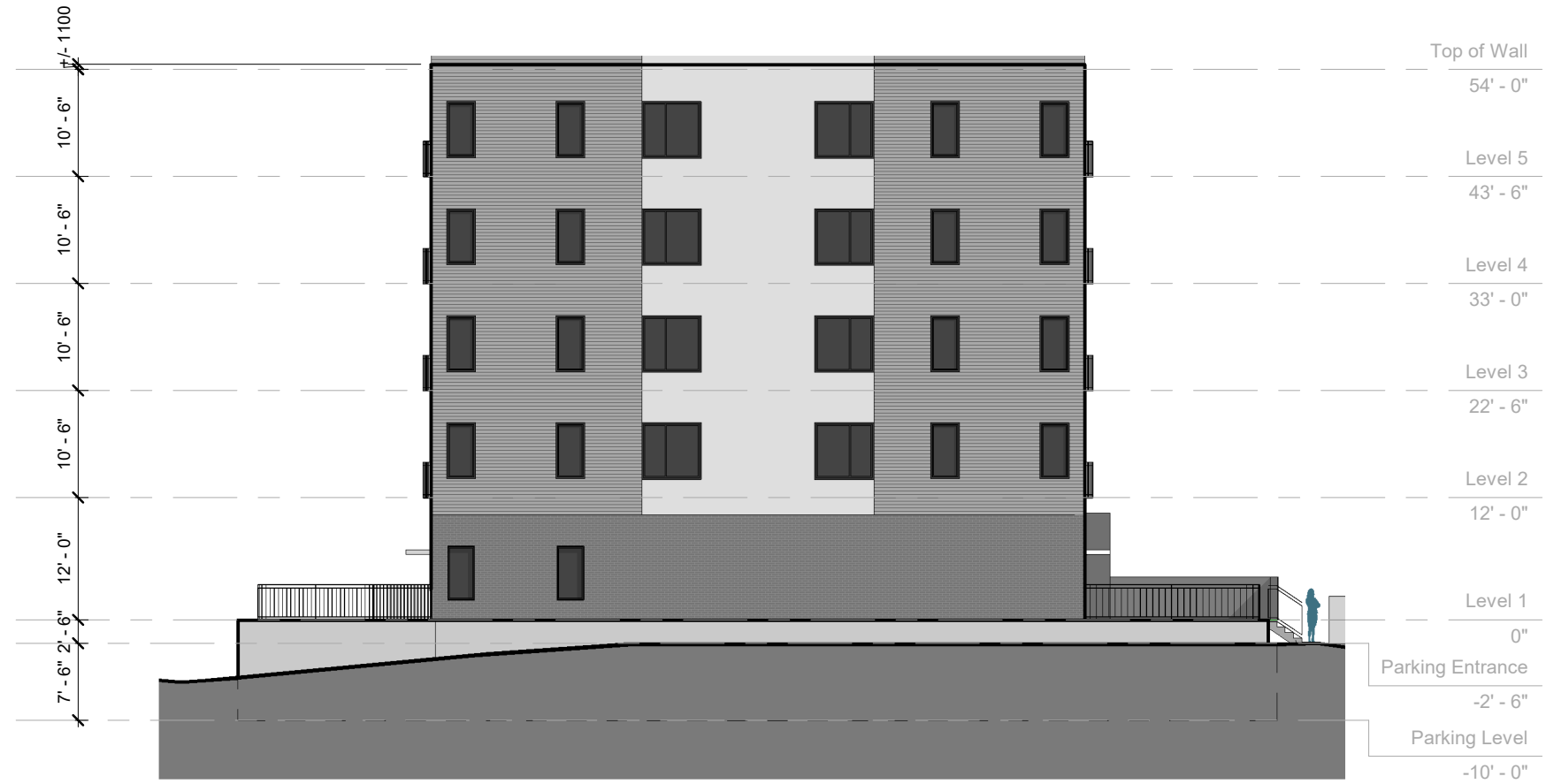
NORTH ELEVATION

Bruce Street Development

BUILDING ELEVATIONS

ASK5

Primary external buildings materials will be a mix of siding of various dimensions, direction and colour above the first level and a robust masonry type at the ground floor. Exact colours, texture and ratios of all elements shown are for inspiration only and may vary depending on availability and cost at the time of permitting.



WEST ELEVATION



SOUTH ELEVATION

Bruce Street Development

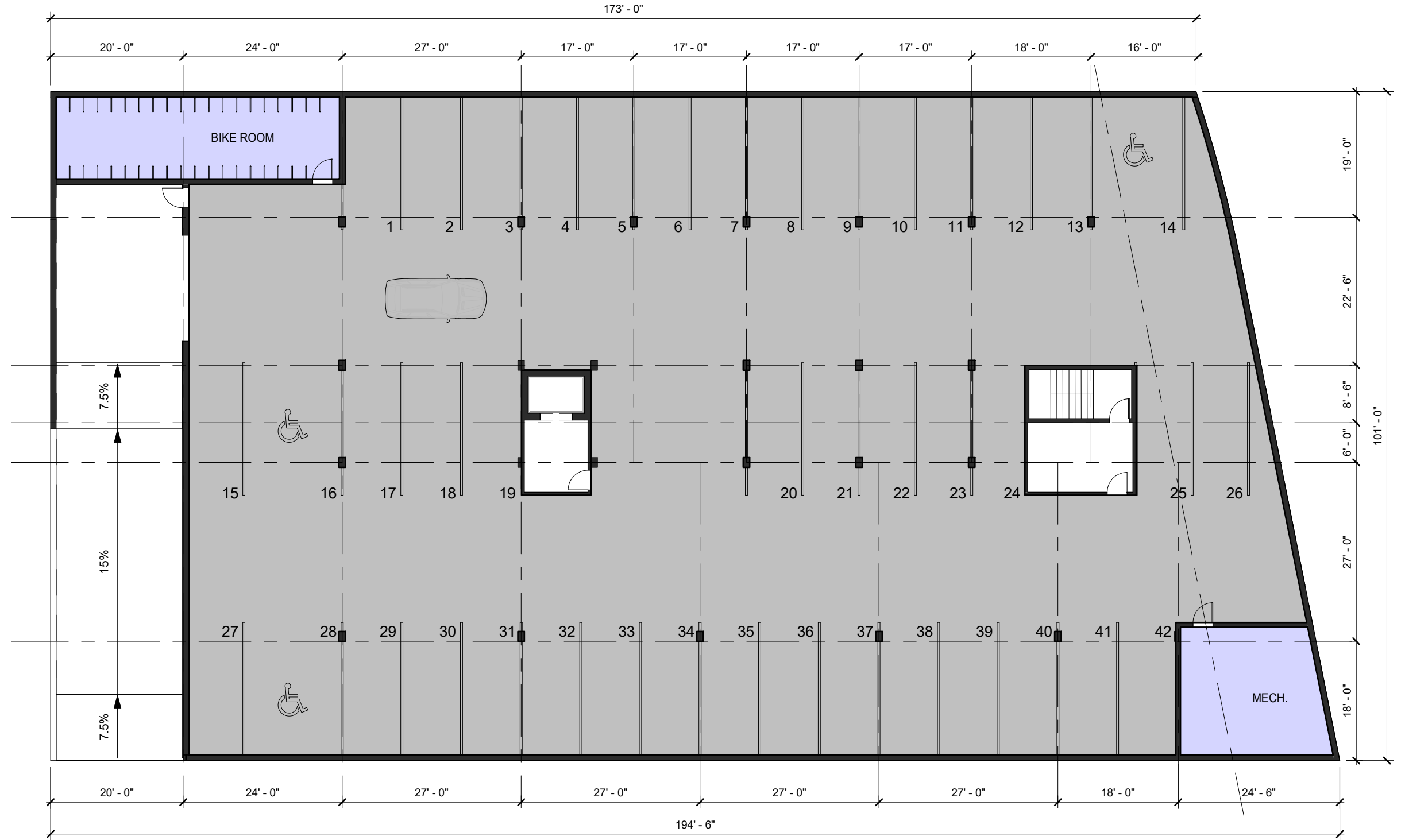
BUILDING ELEVATIONS

ASK6

TOTAL FOOTPRINT: 15,830SF

■ SERVICES: 900SF

TOTAL PARKING SPACE: 42
REGULAR SPACES: 41
BARRIER FREE SPACES: 3



Bruce Street Development

PARKING LEVEL

ASK7