



P.O. Box 1749  
Halifax, Nova Scotia  
B3J 3A5 Canada

**Item No. 5**  
**Halifax Regional Council**  
**January 24, 2023**

**TO:** Mayor Savage and Members of Halifax Regional Council

**SUBMITTED BY:** Original Signed

---

Cathie O'Toole, Chief Administrative Officer

**DATE:** January 16, 2023

**SUBJECT:** Incorporating the Wildlife Corridor Landscape Design Charrette

### INFORMATION REPORT

#### ORIGIN

On April 5, 2022, the following motion of Regional Council was put and passed:

*"15.3.1. THAT Halifax Regional Council direct the Chief Administrative Officer to prepare a staff report regarding incorporating the Wildlife Corridor Landscape Design Charette Report findings within the Green Network Plan."*

#### LEGISLATIVE AUTHORITY

*Halifax Regional Municipality Charter, Clause 229(1)(a)(b)(c)*

229(1) A municipal planning strategy must include statements of policy respecting...

- (a) the objectives of the Municipality in respect of its physical, economic and social environment;
- (b) the future use, management and development of lands within the Municipality;
- (c) the implementation and administration of the municipal planning strategy and the periodic review of the municipal planning strategy, its implementing land-use by-law and the extent to which the objectives set out in the municipal planning strategy are achieved.

## **BACKGROUND**

The Halifax Green Network Plan<sup>1</sup> (HGPN) defines an interconnected open space system for the entire municipality, highlights ecosystem functions and benefits, and outlines strategies to manage open space. Specifically, the HGPN provides land management and community design direction to:

- maintain ecologically and culturally important land and aquatic systems;
- promote the sustainable use of natural resources and economically important open spaces; and
- identify, define, and plan land suited for parks and corridors.

On August 14, 2018, Halifax Regional Council approved the HGPN. This approval included direction to use the HGPN as a framework for amending the existing Regional Plan and Secondary Planning Strategies and to carry out the actions contained in the HGPN through the multi-year budgeting and business planning process.

Actions 2 and 32 of the HGPN outline ways in which the Municipality should manage and improve wildlife corridors. Action 2 speaks to the ideal widths of important and essential corridors (100m & 1000m, respectively) and maintaining the most amount of width for a corridor when the ideal targets cannot be achieved. Action 32 outlines the need to amend the Regional Plan and secondary planning strategies to prioritize the preservation and creation of natural connections between the Chebucto Peninsula and Mainland Nova Scotia when considering development proposals and changes to planning policies and bylaws. To respond to these actions, the Regional Plan Review Work Plan<sup>2</sup> outlined that staff will:

Develop a regional approach to the protection of natural corridors that:

- Directs how natural corridors should be delineated at the regional and individual site level;
- Prioritizes wildlife connections to the Chebucto Peninsula;
- Includes clear policy direction for developing wildlife crossings through major infrastructure like highways and utility corridors; and
- Coordinates this work with the provincial government, utilities and other relevant stakeholders.

### **Wildlife Corridor Landscape Design Charrette**

On November 25, 2020, the Nova Scotia Crown Share Legacy Trust hosted a virtual charrette to bring together scientists, planning experts, and community advocacy groups with specific local area knowledge to create a conceptual map for wildlife corridors extending from the Backlands to the Ingram River Wilderness Area and the Sandy Lake-Sackville River Area. HRM Regional Planning staff attended this session. The report was submitted to HRM as an input to the ongoing Regional Plan Review<sup>3</sup> project on April 7, 2021.

On February 3, 2022, the Environment & Sustainability Standing Committee (ESSC) received a presentation from Karen McKendry, Wilderness Outreach Coordinator, Ecology Action Centre, respecting the Wildlife Corridor Landscape Design Charrette Report (Charrette Report)<sup>4</sup> for consideration and inclusion within the HGPN. The entire report is included within Attachment A. ESSC directed the Charrette Report to Regional Council, which passed a motion requesting staff to prepare a report “regarding

---

<sup>1</sup> <https://www.halifax.ca/about-halifax/regional-community-planning/regional-plan/halifax-green-network-plan>

<sup>2</sup> See Attachment E in the Regional Plan Review: Phase 3 Amendments report, available here: [https://cdn.halifax.ca/sites/default/files/documents/city-hall/regional-council/220712rc15113\\_0.pdf](https://cdn.halifax.ca/sites/default/files/documents/city-hall/regional-council/220712rc15113_0.pdf)

<sup>3</sup> For more information on the Regional Plan Review, please visit the project website at [www.shapeyourcityhalifax.ca/regional-plan](http://www.shapeyourcityhalifax.ca/regional-plan)

<sup>4</sup> Link to the Charette Report presentation here: <https://cdn.halifax.ca/sites/default/files/documents/city-hall/standing-committees/220203essc1031pres.pdf>

incorporating the Wildlife Corridor Landscape Design Charrette Report findings within the Green Network Plan.”<sup>5 6</sup>

The Charrette Report seeks to build on the existing wildlife corridor work of the HGNP, looking more closely at possible terrestrial and aquatic wildlife corridors within and connecting to the Chebucto Peninsula that were not identified within Maps 5 & 9 of the HGNP (Green Network Ecology Map & Green Network Map, respectively). The intention of the Charrette Report is to identify wildlife corridors that would increase landscape connectivity and proposes that these corridors be considered for addition into the HGNP and the Regional Plan as part of the current review process. The integration of the Charrette Report into planning documents contributes to the ongoing goals of the HalifACT Climate Action Plan,<sup>7</sup> Action 20 and 21 (protect, restore, maintain and expand natural areas and green infrastructure assets), and broadly supports Action 26 of HalifACT (preservation of natural areas and ecosystem health).

The Charrette Report examined four core areas within and connecting to the Chebucto Peninsula, identifying additional primary corridors, secondary corridors, aquatic corridors, and pinch points that were not included within the HGNP mapping. In addition, parcels of land or larger areas of land made up of multiple parcels are also identified as areas to consider for conservation. These corridors paint a more detailed picture of overall landscape connectivity in this area of HRM than what is included in the HGNP. The suggested additional corridors and connections identified in the Charrette Report frequently show a connection between an identified HGNP corridor to another, or an identified park space, while in some cases the suggested connections are outside of any lands identified in the HGNP.

## **DISCUSSION**

The Charrette Report will be used by staff to help design a regional approach to the protection of natural corridors, which will be implemented through HRM’s planning documents. The following provides a summary of the work that will be completed and major questions to be answered:

- *Ecological Mapping:* Work will be completed to analyze what ecological features are present within the suggested corridors and connections. Staff must gain an understanding of what features and wildlife are present in the area to better understand what areas to focus on for integration into planning documents.
- *Development Overlap:* An analysis will be conducted to examine what development, if any, is present or proposed within the areas in or adjacent to the suggested corridors and connections. As the group that created the Charrette Report did not have access to data regarding current and future development proposals, clarifying where development pressures are the most substantial within the areas identified in the Charrette Report will inform what corridors can or should be prioritized for protection.
- *Development Rights:* Staff will assess the current zoning and ownership of the proposed lands, to understand the impact of restrictions on development of protecting natural corridors. The Charrette Report proposes corridors and connections over lands that are privately and publicly owned. Gaining an understanding of the permitted uses within the current zones on the lands proposed within the corridors will help to formulate an understanding of potential conflicts that may arise from as-of-right developments occurring on or adjacent to lands with a proposed corridor. Some proposed corridors run through areas that are currently under a Development Agreement (DA).

---

<sup>5</sup> Minutes of ESSC meeting available here: <https://www.halifax.ca/sites/default/files/documents/city-hall/standing-committees/220303esscmmins.pdf>

<sup>6</sup> Minutes of Regional Council meeting available here: <https://cdn.halifax.ca/sites/default/files/documents/city-hall/regional-council/220405rcmins.pdf>

<sup>7</sup> Link to HalifACT Plan here: [https://www.halifax.ca/sites/default/files/documents/about-the-city/energy-environment/HRM\\_HaliFACT\\_vNew%20Logo\\_.pdf](https://www.halifax.ca/sites/default/files/documents/about-the-city/energy-environment/HRM_HaliFACT_vNew%20Logo_.pdf)

Staff will review the restrictions and options available to HRM associated with the alteration of the terms of a DA that has been created, or the future phases of a DA that is already partially built out.

- *Aquatic Corridors:* While the HGNP identifies the need to monitor and protect aquatic systems, no aquatic corridors have been identified within Map 5 or 9 of the HGNP. Staff will assess the feasibility of incorporating consideration of aquatic corridors into future planning policy and regulations. Staff will examine jurisdictional considerations to understand what power the Municipality has to control development surrounding an aquatic corridor, beyond the existing minimum requirement pertaining to riparian buffers. This work will help to inform the ongoing review and implementation of the HGNP Action 6 (increase standard watercourse buffer width to 30m), being examined in Phase 4 of the Regional Plan review.
- *Wildlife Crossings:* The Charrette Report proposed several corridors and connections that cross over major highways and roads. Staff will examine the feasibility and opportunities for wildlife crossings to be established within the areas identified in the Report and attempt to identify possible locations that would be suitable for a wildlife crossing. This work will also help respond to HGNP actions related to wildlife crossings (Actions 24, 40, & 41) and the Chebucto Peninsula (Actions 32, 33, & 34).
- *Prioritization of Corridors:* Staff will review all proposed corridors and areas of connection within the Charrette Report to establish locations that should be prioritized for consideration. Staff will assess what features or opportunities could be lost if a corridor was not preserved or maintained moving forward. Understanding what natural features and ecosystem services the Municipality has at a more localized level will contribute to the ongoing work of delineating natural corridors in land use policy and regulations.
- *Examination of Corridor Widths:* The Charrette Report identified several corridors that were narrower than the widths described in the HGNP (100m for important corridors & 1000m for essential corridors). Using the mapping described above, staff will determine where it is feasible to achieve the recommended corridor width, where only narrower corridors may be possible, and identify pinch points that should be prioritized for future widening.
- *Provincial Partnership and Coordination Opportunities:* Staff will engage in discussions with the Province (Department of Environment and Lands and Forestry) to understand the work that is being planned or underway, with regard to ecological connectivity. Gaining an understanding of additional support, information, and resources available to staff will contribute to a more thorough and collaborative integration of ecological considerations and wildlife corridors into land use policy and regulation.

*National Program for Ecological Corridors:* Staff will investigate the details of the program run by Parks Canada to establish any assistance or guidance the program may be able to provide to the integration of the Charrette Report into future planning work.

### **Next Steps**

This work has begun and will be undertaken as part of the ongoing Regional Plan Review. Staff anticipate releasing a draft of the revised Regional Plan in 2023, which will include policy related to wildlife corridors as outlined in this report.

### **FINANCIAL IMPLICATIONS**

The costs associated with undertaking the review of the Wildlife Corridor Landscape Design Charrette Report can be accommodated within the approved 2022-2023 operating budget.



## **COMMUNITY ENGAGEMENT**

The Halifax Green Network Plan was informed by three phases of extensive engagement with residents from urban, suburban and rural communities, provincial government departments and stakeholder groups. Those consultations provided valuable insight to inform the vision, principles, objectives, and actions within the HGNP. The Wildlife Corridor Landscape Design Charrette Report was a publicly organized collaboration, bringing together scientists, experts, and community advocacy groups to exchange ideas and knowledge. Additional public engagement will be carried out for individual HGNP action items as appropriate on a case-by-case basis.

## **ATTACHMENTS**

Attachment A                      Wildlife Corridor Landscape Design Charrette Report

---

A copy of this report can be obtained online at [halifax.ca](http://halifax.ca) or by contacting the Office of the Municipal Clerk at 902.490.4210.

Report Prepared by:              Matthew Conlin, Planner II, Regional & Community Planning, 902.719.9457  
Leah Perrin, Principal Planner, Regional & Community Planning, 902.476.3792

---

# **WILDLIFE CORRIDOR LANDSCAPE DESIGN CHARRETTE**

Chebucto-Timberlea-Sandy Lake area of Halifax, NS

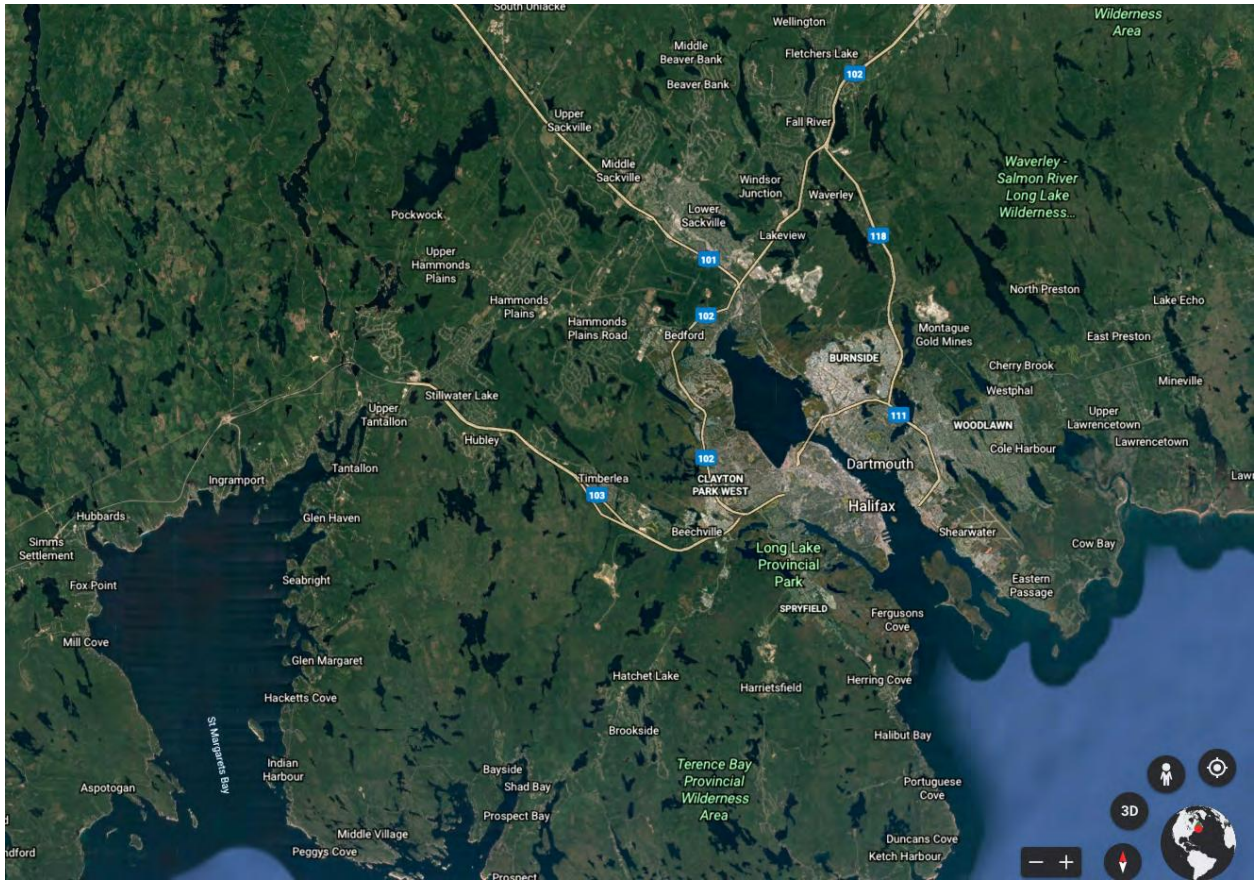
**Summary Document**



**NOVA SCOTIA CROWN SHARE LAND LEGACY TRUST**

Halifax, NS, March 2021





Source: Google Earth

Cite report as:

Nova Scotia Crown Share Land Legacy Trust. 2021. Wildlife Corridor Landscape Design Charrette: Chebucto-Timberlea-Sandy Lake area of Halifax, NS. Summary Document. Nova Scotia Crown Share Land Legacy Trust, Halifax, NS. Canada. 55pgs.

© Nova Scotia Crown Share Land Legacy Trust

Cover photo: Five Bridge Lakes, K. Beazley

*Halifax is located in Mi'kma'ki, the ancestral and unceded territory of the Mi'kmaq.*

*We are all Treaty people.*

## **INTRODUCTION AND CONTEXT**

Halifax Regional Municipality's initial regional plan (2006) and the regional plan update (2014) highlight the importance of ecological connectivity between natural areas so as to enable and facilitate the movement of species across intervening landscapes that are becoming increasingly occupied by a continuously expanding pattern of urban development. The 2006 and 2014 plans (Map 4, in each case) identify connectivity priorities at a macro scale; however, although useful in identifying the importance of planning for the protection and maintenance of ecological corridors, both plans lack detail in regard to providing explicit direction for on-the-ground implementation.

The 2014 plan therefore calls for the preparation of "a greenbelting and open space priorities plan to protect and preserve connectivity between natural areas and open space lands ...". The resulting Green Network Plan (2018) provides direction for land management and community design "to maintain ecologically and culturally important land and aquatic systems" and "to identify, define and plan land suited for parks [and protected areas] and corridors". A particular focus of the Green Network Plan (Map 9) is emphasis on the preservation and creation of natural connections between the Chebucto Peninsula and the greater Mainland.

As the Green Network Plan remained largely a 'desktop' effort based on available GIS information, the charrette approach reported on herein attempted to move the process a step forward, by bringing GIS experts together with other participants having scientific and local area knowledge, to map significant corridor opportunities and options relative to the Chebucto Peninsula and existing and proposed protected areas on the Peninsula and nearby greater Mainland, generally extending from Ingrams River to the Peninsula to the Sandy Lake area.

## **OVERVIEW**

Ecological connectivity is "the degree to which the landscape facilitates or impedes movement among resource patches" (Taylor et al., 1993, p. 571). It has both structural (based on the spatial structure of the landscape) and functional (based on how a particular organism reacts to the spatial structure of the landscape) elements, but the two are not mutually exclusive, with each informing the other (Brooks, 2003). At the landscape level, connectivity is often modelled through a core-corridor model, where large, vegetated areas serve as the core areas which are connected to one another by corridors.

Corridors are linear connections that facilitate through-movement across the landscape between core areas. Some corridors are contiguous, providing continuous physical connection between core habitat areas, while other are stepping stones, a linear series of smaller pieces of habitat linking two core habitat areas. Ideally, corridors should be as wide as possible to mitigate the edge effects that result from development on either side of a corridor and extend into the corridor, creating the zone of influence of human activity. For example, the zone of influence for black bears is 5 km in residential areas (Ford et al., 2020). To account for this zone of influence and to have a 1 km wide effective corridor for black bear, the corridor needs to be at least 6 km wide.

In Halifax Regional Municipality (HRM), the Halifax Green Network Plan was approved by Council in 2018. The Plan includes a framework to define an interconnected open space system, describes the benefits of such a system, and recommends actions to implement the Plan. To map the current state of connectivity of natural areas in HRM, the Plan used a core-corridor model, identifying 'Important Corridors' (the loss of which would impact local connectivity, but likely not regional

connectivity) and ‘Essential Corridors’ (those that provide critical or unique connections between core areas and are crucial to regional connectivity). According to the Plan, Essential Corridors should be at least 1 km wide (though the width should increase in proportion to the corridor’s length), and Important Corridors should be at least 100 m wide. Where these widths are not possible, the Plan calls for as wide of an area to be maintained as possible and for restoration activities to be undertaken to restore disturbed habitats and to mitigate the impacts of nearby human activity (Halifax Regional Municipality & O2 Planning and Design, 2018, p. 36).

While the Halifax Green Network Plan provides a good basis for regional level planning, there are opportunities to build on the Plan’s modeling and identify critical areas for connectivity at a finer scale, especially within and around the city’s urban core, where there is pressure from urban development, road construction and forestry. Ultimately, more refined corridor mapping and rationale is needed to inform Action 32 in the Plan: “Amend the Regional Plan and Municipal Planning Strategies to prioritize the preservation and creation of natural connections to the Chebucto Peninsula (Map 9) from the Mainland when reviewing development proposals and updating planning policies and zoning in the area.”

### **THE CHARRETTE PROCESS**

On November 25, 2020, the Nova Scotia Crown Share Land Legacy Trust (NSCSLLT) hosted a virtual charrette to bring together scientists, planning experts and community advocate groups (for a full list of participants see Appendix I) with specific local area knowledge to create a conceptual map for wildlife corridors extending from the Backlands to the Ingram River Wilderness Area and the Sandy Lake-Sackville River Area. These are the main areas that provide habitat connectivity for wildlife on the Mainland moving to and from the Chebucto Peninsula.

Participants were divided into four groups, each looking at connections between different core areas (Figure 1):

- a) Sackville River- Sandy Lake to Blue Mountain Birch Cove Lakes Wilderness Area (BMBCL);
- b) BMBCL to the proposed Ingram River Wilderness Area;
- c) BMBCL to the Five Bridge Lakes Wilderness Area; and,
- d) Five Bridge Lakes Wilderness Area to Long Lake Provincial Park and the Backlands.

Each group worked together to identify the critical connections in their core area, considering both terrestrial and aquatic connectivity, as well as both structural and functional elements of connectivity. The goal of this charrette was to create a series of maps (and their supporting rationale) that would build on the Plan’s corridors mapping and would also identify areas not currently being considered in connectivity planning which should be considered.

The objectives were to: 1) stimulate thinking about possible solutions and collaboration amongst knowledgeable individuals; 2) create a series of conceptual maps that could be used for future refinements and work in the area; 3) identify areas not currently being considered in connectivity planning, but that should be considered in the future; and, 4) advance the work of O2 in the HGNP in identifying potential wildlife corridors by utilizing the extensive local knowledge of participants.

Each group presented their mapped outputs to the larger group. The maps were then compiled and refined for consistent symbology for presentation in this summary report. The four separate maps were overlaid and combined to form a composite map of the larger region. The following sections provide overviews of each of the four group maps, as well as a summary and composite map.





Figure 1. Key areas of concern for four groups during the charrette: Sackville River and Sandy Lake to Blue Mountain Birch Cove Lakes Wilderness Area (BMBCL) (a); BMBCL to the proposed Ingram River Wilderness Area (b); BMBCL to the Five Bridge Lakes Wilderness Area (c); Five Bridge Lakes Wilderness Area to Long Lake Provincial Park and the Backlands (d).

## **1. SACKVILLE RIVER-SANDY LAKE TO BLUE MOUNTAIN BIRCH COVE LAKES**

### *Overview of the Area*

The first group was focused on connectivity from the Sackville River and Sandy Lake to Blue Mountain - Birch Cove Lakes Wilderness Area (BMBCL). The Halifax Green Network Plan designates the Sackville River Valley from McCabe Lake to the Bedford Rifle Range as an essential corridor, and there are two converging important corridors linking Sandy Lake Regional Park and BMBCL, looping around the Stonington Park subdivision (Figure 2).



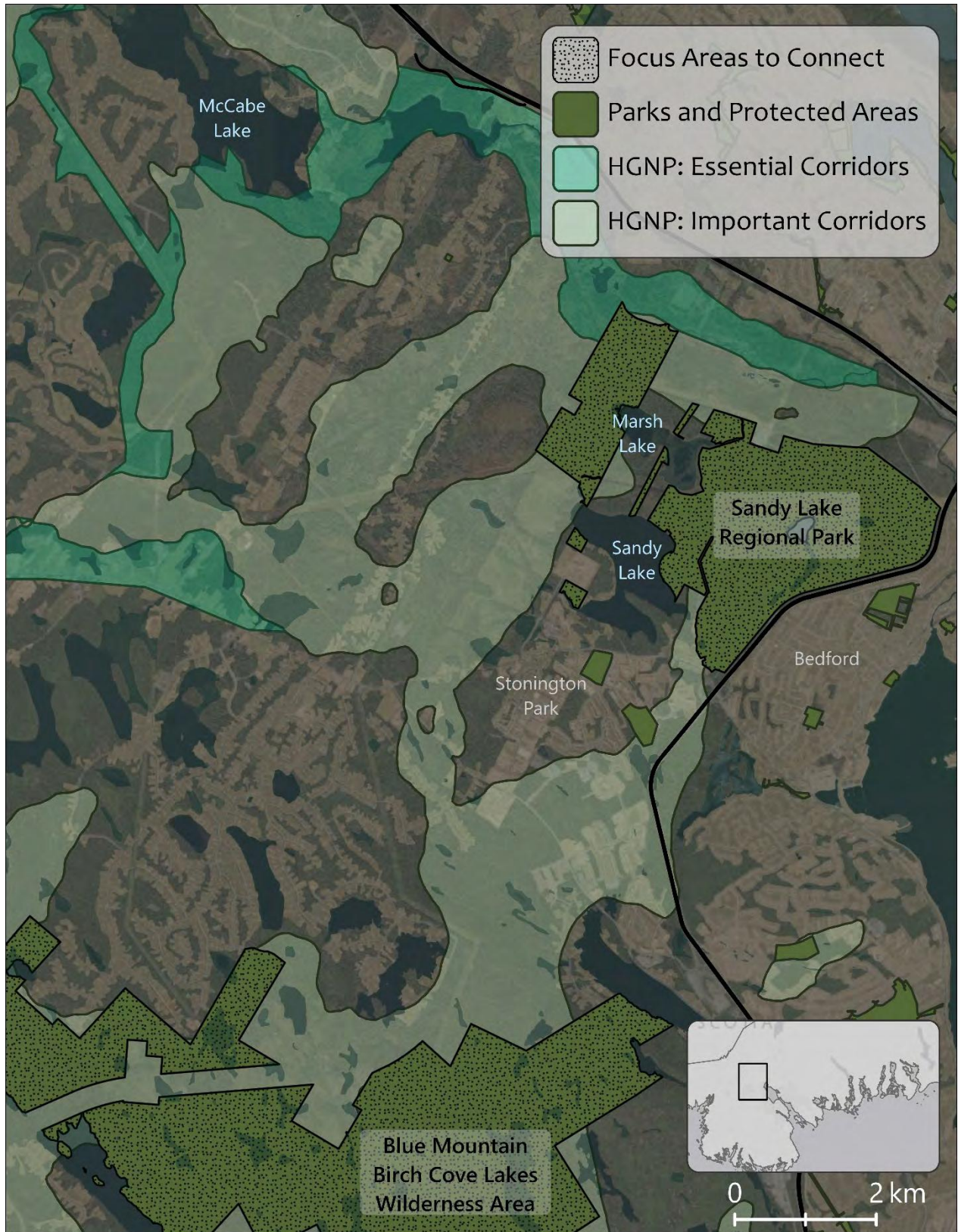


Figure 2. Overview of the area between Sandy Lake and Blue Mountain Birch Cove Lakes Wilderness Area



### *Primary Connections*

The group identified a primary corridor that runs from Webber Lake along the Sackville River Valley into Sandy Lake Regional Park, through an essential corridor identified in the Halifax Green Network Plan (Figure 3). Between the two larger protected parts of Sandy Lake Regional Park lies Marsh Lake, which the group identified as being critical habitat to protect and an important area for aquatic connectivity. The important corridors identified in the Halifax Green Network Plan actually go around much of this critical area rather than incorporating it.

Another primary connection identified by this group runs along the west side of Sandy Lake to the intersection of Hammonds Plains Road and Larry Uteck Boulevard, which was identified as a major pinchpoint for connectivity between Sandy Lake and BMBCL (Figure 4). At this juncture, there are a few options for connectivity, which could also point to potential candidate spots for wildlife crossing structures. It was noted that there are a number of wetlands around this intersection which are important habitat and should form the basis of the corridors in the area.

The group largely focused their identification of corridors on aiming to preserve the areas around streams in order to maintain both aquatic and terrestrial connectivity, incorporating known corridors of wildlife movement to refine corridor placement. A corridor along a powerline right of way was also identified through the Uplands Park subdivision, which is known to be used by wildlife currently. From the Black Duck Wetlands there is a relatively undeveloped path that connects to BMBCL (Figure 5).

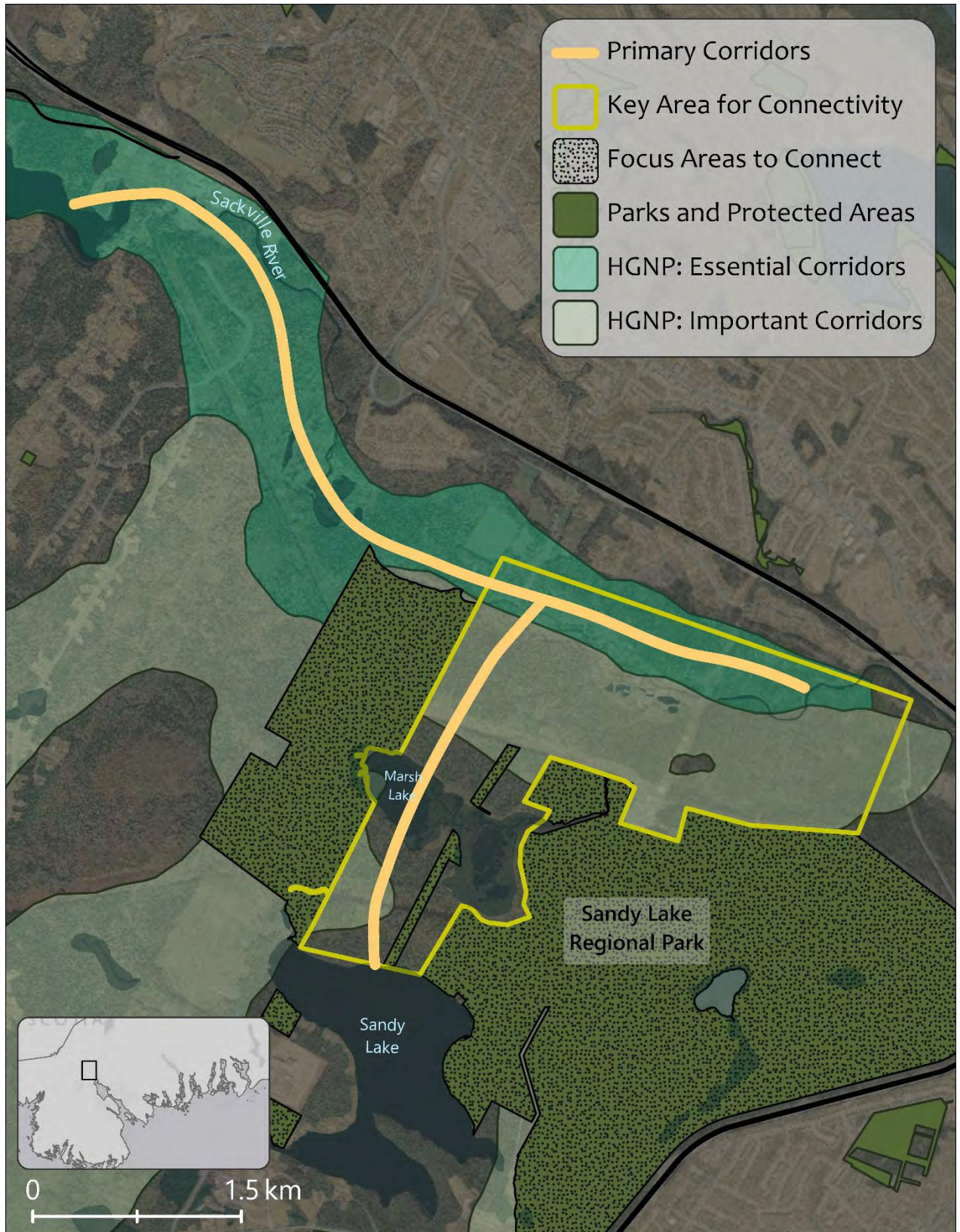


Figure 3. Connectivity between the Sackville River Valley and Sandy Lake, focused on the key area around Marsh Lake



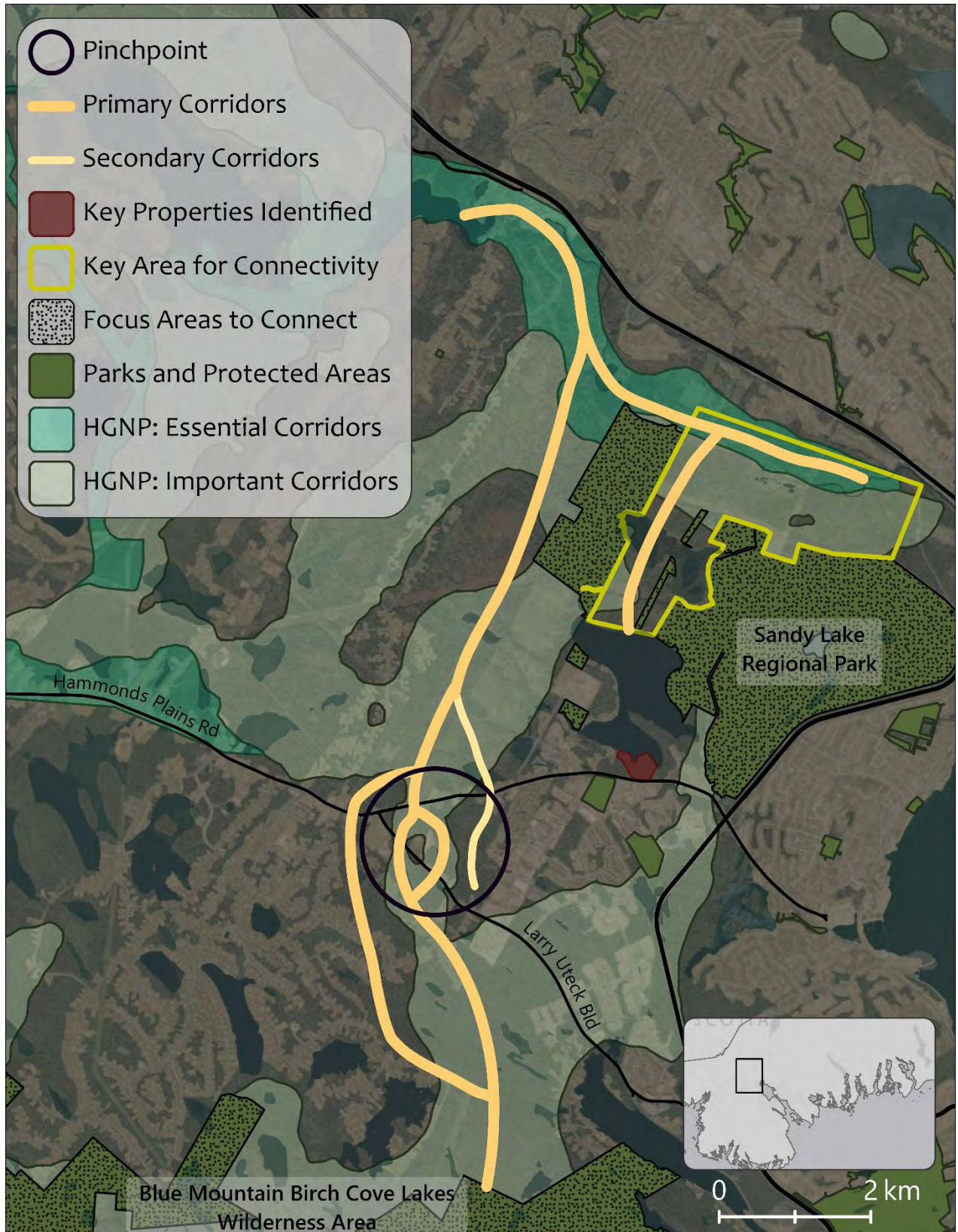


Figure 4. The main terrestrial connections between Sandy Lake and Blue Mountain Birch Cove Lakes Wilderness Area





Figure 5. Pinchpoint around the intersection of Hammonds Plains Road and Larry Uteck Boulevard

### *Aquatic Connectivity*

The entire Sackville River Valley was identified as being critical to protect, from McCabe Lake to the Bedford Basin, most of which is also designated as an essential corridor in the Halifax Green Network Plan (Figure 6). The group also noted that there is a pinchpoint for aquatic connectivity where the river meets Lucasville road, near Webber Lake (Figure 7).

As was noted above, Marsh Lake is an important area for connectivity, providing a direct linkage between the Sackville River and Sandy Lake via Peverills Brook. Other streams and their tributaries flow from the BMBCL Wilderness Area into Sandy Lake, flowing around the intersection of Hammonds Plains Road and Larry Uteck Boulevard. As was noted above, this is a critical area for connectivity, and the group first identified the aquatic connections and then widened them to incorporate terrestrial connectivity as well. Several wetlands and streams connecting them were identified, including Black Duck Brook, which eventually flows into Kearney Lake and links up with an aquatic connection also identified by the group focused on connectivity between BMBCL and Five Bridge Lakes Wilderness Area.

Across the study area, the corridors identified by the group largely followed those in the Halifax Green Network Plan, but there were some differences, as noted (Figure 8).



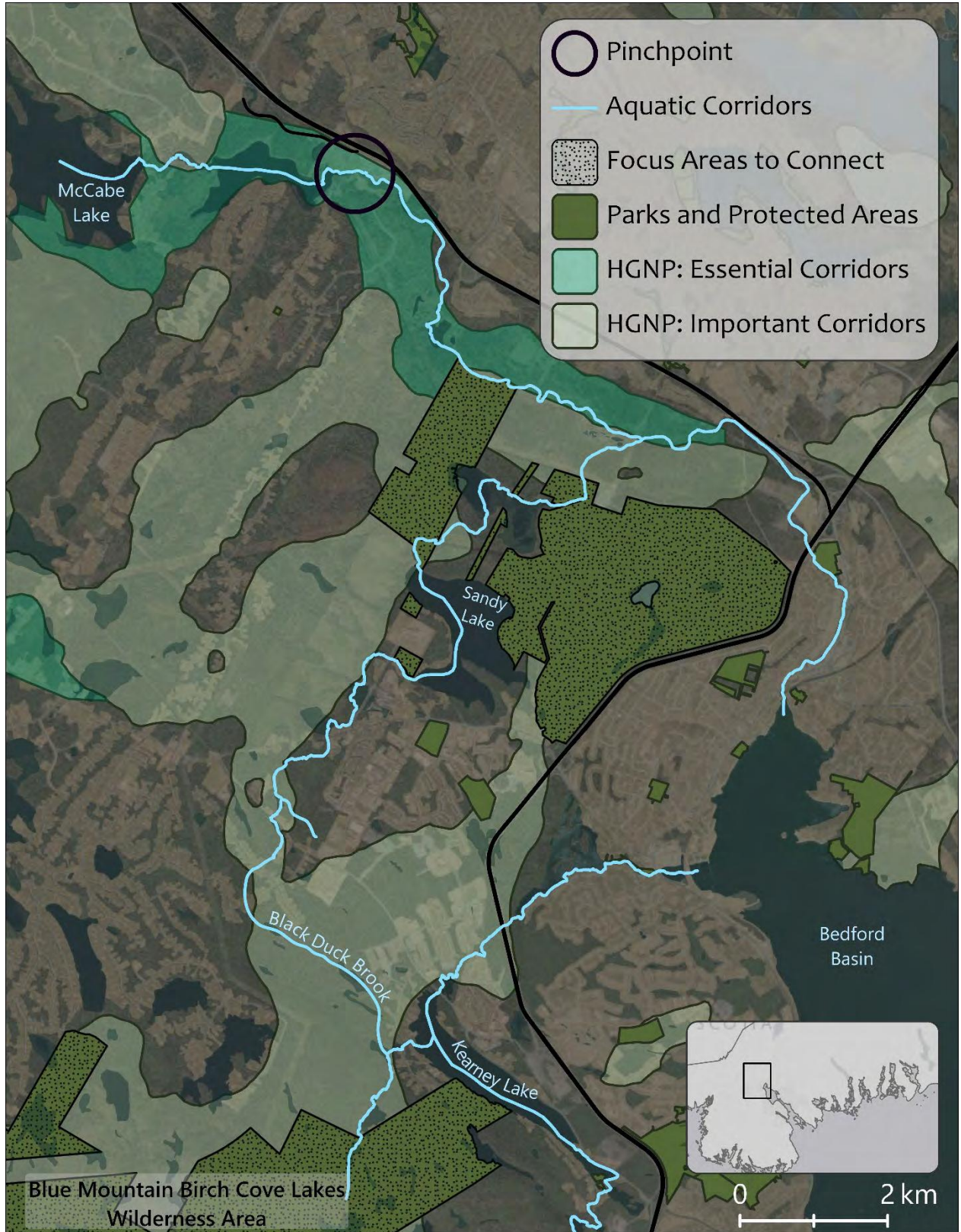


Figure 6. Aquatic Connectivity in the area around the Sackville River and Sandy Lake to Blue Mountain Birch Cove Lakes

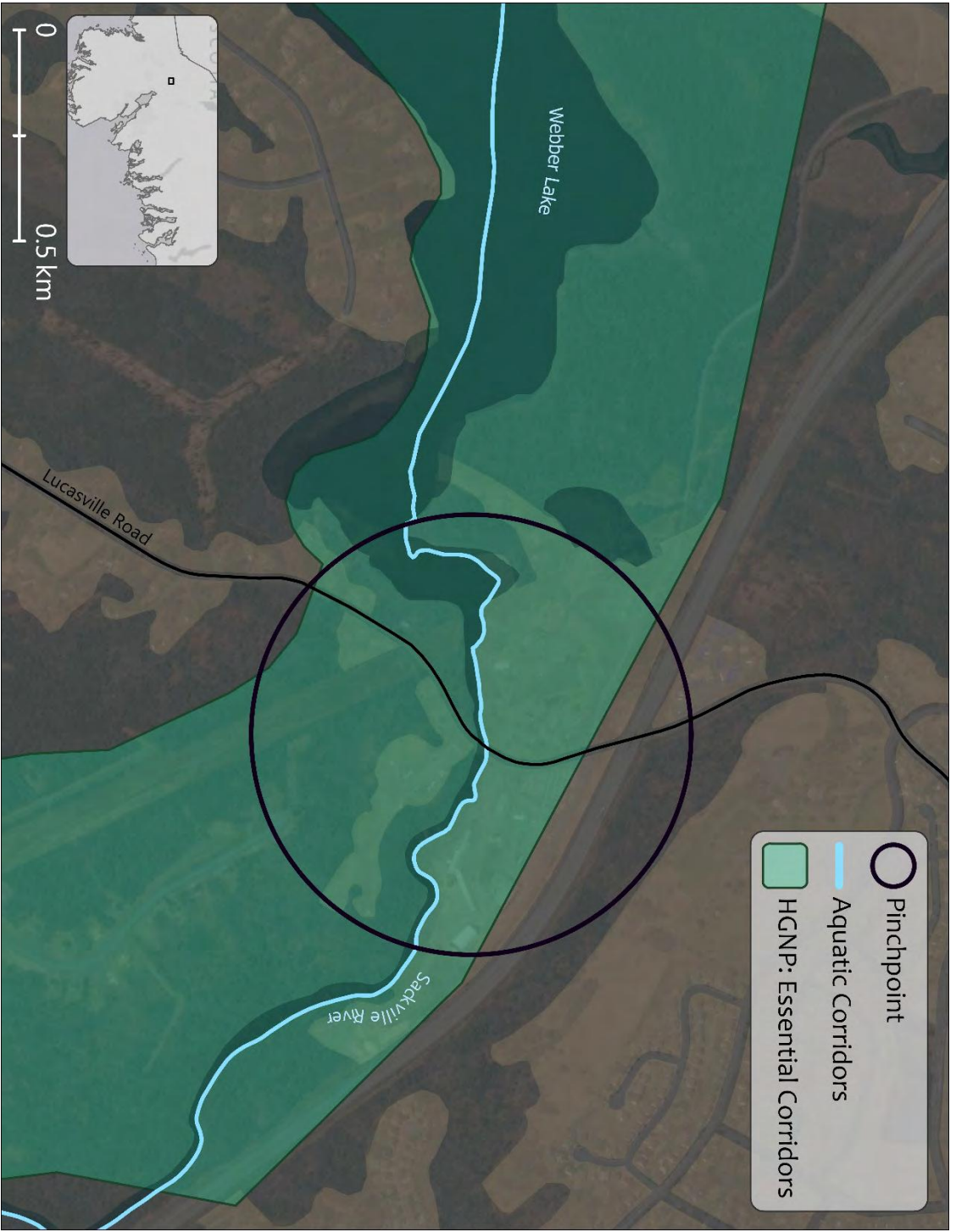


Figure 7. Pinchpoint in Aquatic Connectivity along the Sackville River at Lucasville Road near Webber Lake



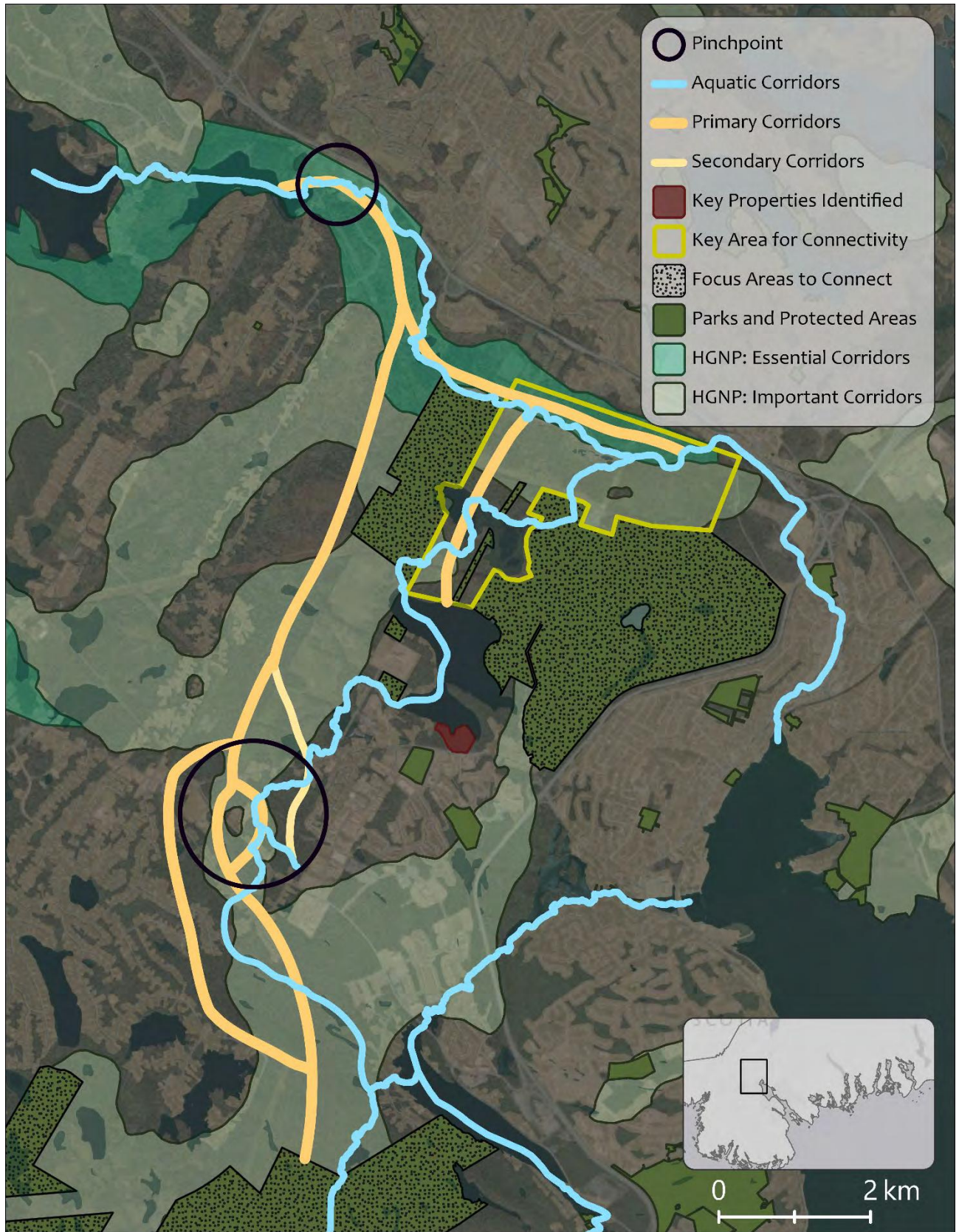


Figure 8. Summary map for the Sandy Lake to Blue Mountain Birch Cove Lakes group



## **BLUE MOUNTAIN BIRCH COVE LAKES TO INGRAM RIVER**

### *Overview of the Area*

The second group was focused on identifying areas for connectivity between the Blue Mountain Birch Cove Lakes (BMBCL) Wilderness Area and the Ingram River area and beyond (Figure 9). The Ingram River area is key to provincial scale connectivity, linking the Central and Western regions of the province. The St. Margarets Bay Stewardship Association has spearheaded a campaign to establish a core wilderness area on a block of Crown land formerly owned by the Bowater Mersey Paper Company, just to the north of St. Margarets Bay, as the proposed Ingram River Wilderness Area. The Halifax Green Network Plan identified two key corridors between BMBCL Wilderness Area and the Ingram River area. The wider of the two corridors flows to the north between the communities of Yankeetown and Glen Arbour, crossing Hammonds Plains Road as it continues towards the Pockwock Wilderness Area. A narrower corridor to the south flows through a more densely populated area, crossing Highway 103 twice, between the communities of Stillwater Lake and Hubley and to the west of the exit at Hammonds Plains Road, connecting also to Five Bridge Lakes Wilderness Area. Though highly developed, the latter corridor is identified as essential in the Halifax Green Network Plan.

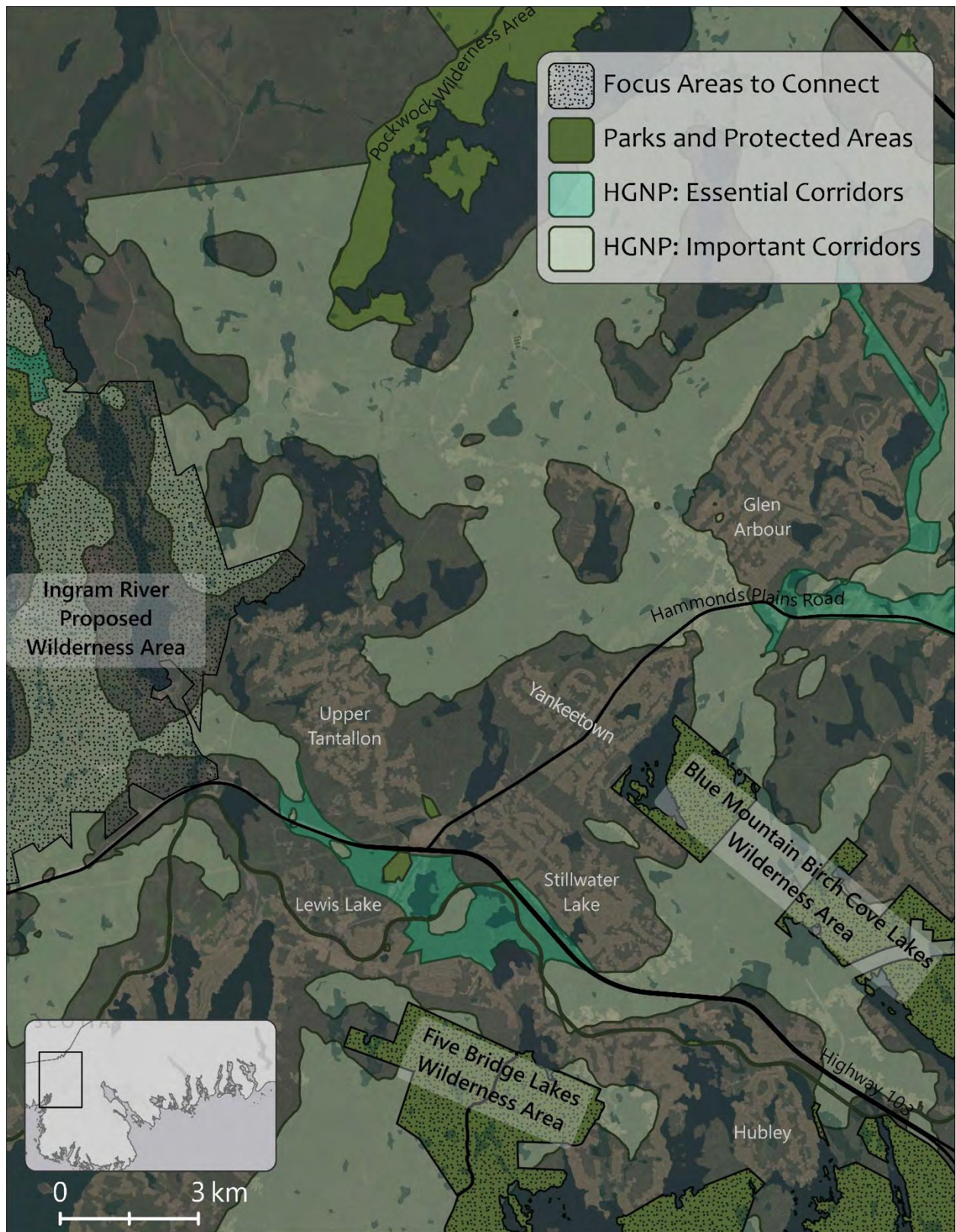


Figure 9 Overview map of the area between the Blue Mountain Birch-Cove Lakes Wilderness Area and the Ingram River area

### *Northern Connection*

A primary connection between BMBCL and the proposed Ingram River Wilderness Area flows northwards out of BMBCL towards the Pockwock Wilderness Area before turning westward towards Ingram River (Figure 10). The group noted that land ownership patterns drove the identification of potential corridors in the area, as much of it is privately owned and developed/slanted to be developed. They also noted that the important corridors identified in the Halifax Green Network Plan served as a guide to finding the remaining intact corridors between the area's many subdivisions.

The area where the corridor crosses Hammonds Plains Road, between Yankeetown Road and Wallace Hill Road, was identified as a pinchpoint (Figure 11). Although it is narrow (~150 m wide), there is an intact remnant natural habitat between the communities of Yankeetown and Glen Arbour that provides an opportunity for wildlife movement along the identified corridor up towards the Pockwock Wilderness Area and the Ingram River area. Although there is development pressure, it is critical that this piece remains undeveloped as it is the only opportunity to cross Hammonds Plains Road with undeveloped land on both sides of the road within the identified corridor.

A large swath of land for connectivity was identified for potential acquisition or collaboration with the landowners (Figure 12). Properties in this area are currently owned by a variety of actors, including the Crown, Halifax Regional Water Commission and Elmsdale Lumber, the latter of which holds the properties immediately adjacent to the proposed Ingram River Wilderness Area. Properties managed by the Halifax Water Commission in this area provide connectivity to the Pockwock Wilderness Area and areas beyond HRM.





Figure 10 Corridors identified in the northern part of the area of interest



Figure 11 Pinchpoint identified in the Northern Connection where the corridor crosses Hammonds Plains Road between Yankeetown Road and Wallace Hill Road.



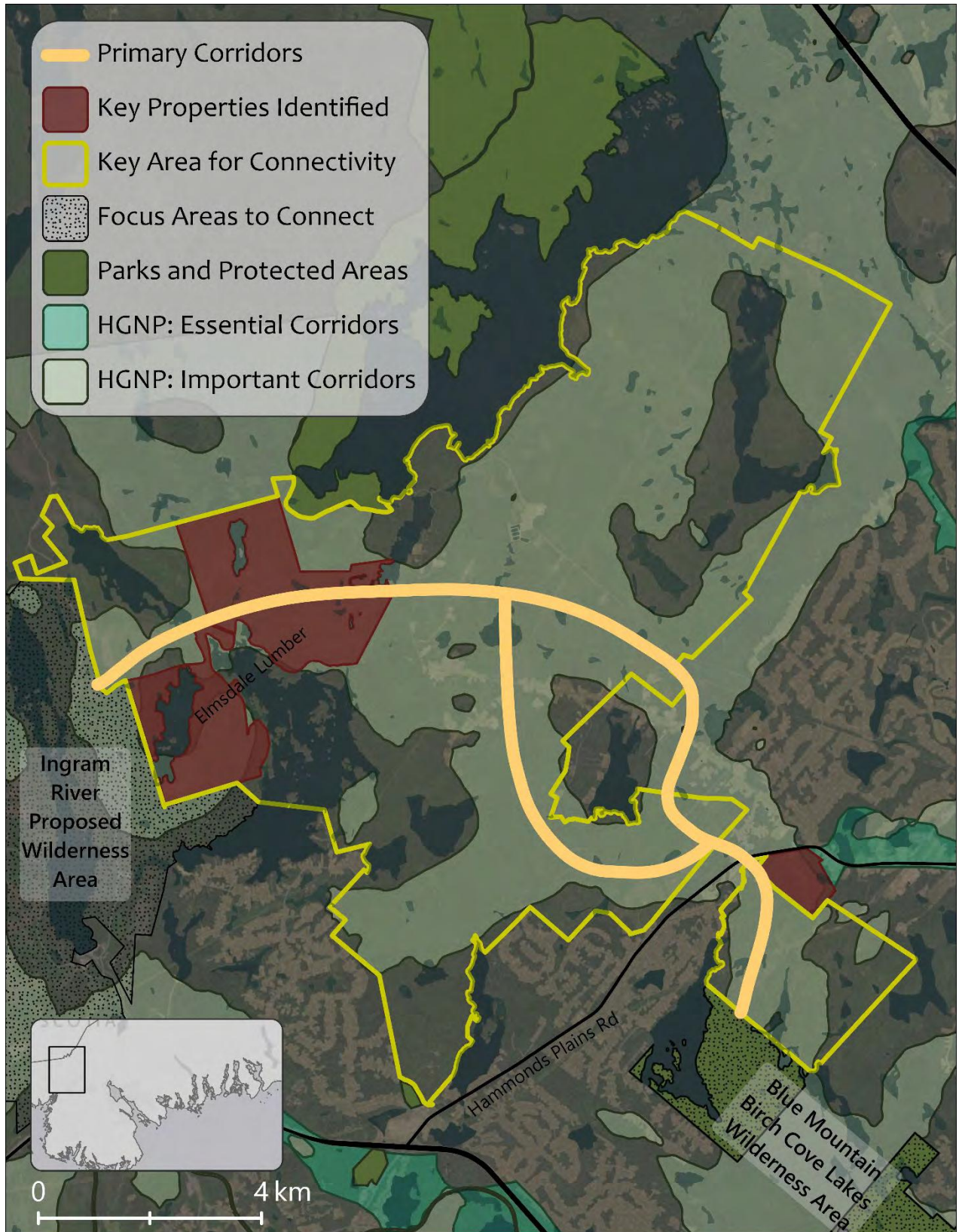


Figure 12. The key areas to manage for connectivity around the northern connection identified between Blue Mountain Birch Cove Wilderness Area and the Ingram River proposed Wilderness Area

### *Southern Connection*

Connecting BMBCL to the Ingram River area by going south from the BMBCL is also important, though intact potential corridors are far narrower (well under 100 m) and comprise fewer opportunities for connectivity than within the northern connection (Figure 13). The corridor is identified in the Halifax Green Network Plan, with parts of it deemed essential. Connectivity along this path is highly limited to the gaps between a number of subdivisions in the area, especially in the area south of Highway 103. These paths offers opportunities to connect to the Five Bridge Lakes Wilderness Area, but this would require going through Hubley, and questions were raised about how successful this could be as it is a very narrow connection through an already narrow corridor and would likely require restoration (Figure 14).

An important opportunity to link to the northern connection was also identified (Figure 13). Just to the southwest of BMBCL there is a strip of Crown Land between the communities of Yankeetown and Stillwater Lake that provides a link towards Hammonds Plains Road, beyond which there is undeveloped land that connects to and abuts the HGNP important corridor and the northern connection in the area around Stillwater Lake. This opportunity for connectivity was not identified in the Halifax Green Network Plan but appears to be a potentially crucial option, especially given significant development pressures throughout the area.

Across the study area, important options for connectivity were identified, including opportunities for designing some redundancy into a connected system (Figure 15). Some corridor locations are situated within larger undeveloped areas and represent crucial opportunities for additional core areas and wide corridors. Other corridors are very narrow, including some that are considered essential, and are likely to require restoration, especially in key pinchpoints.



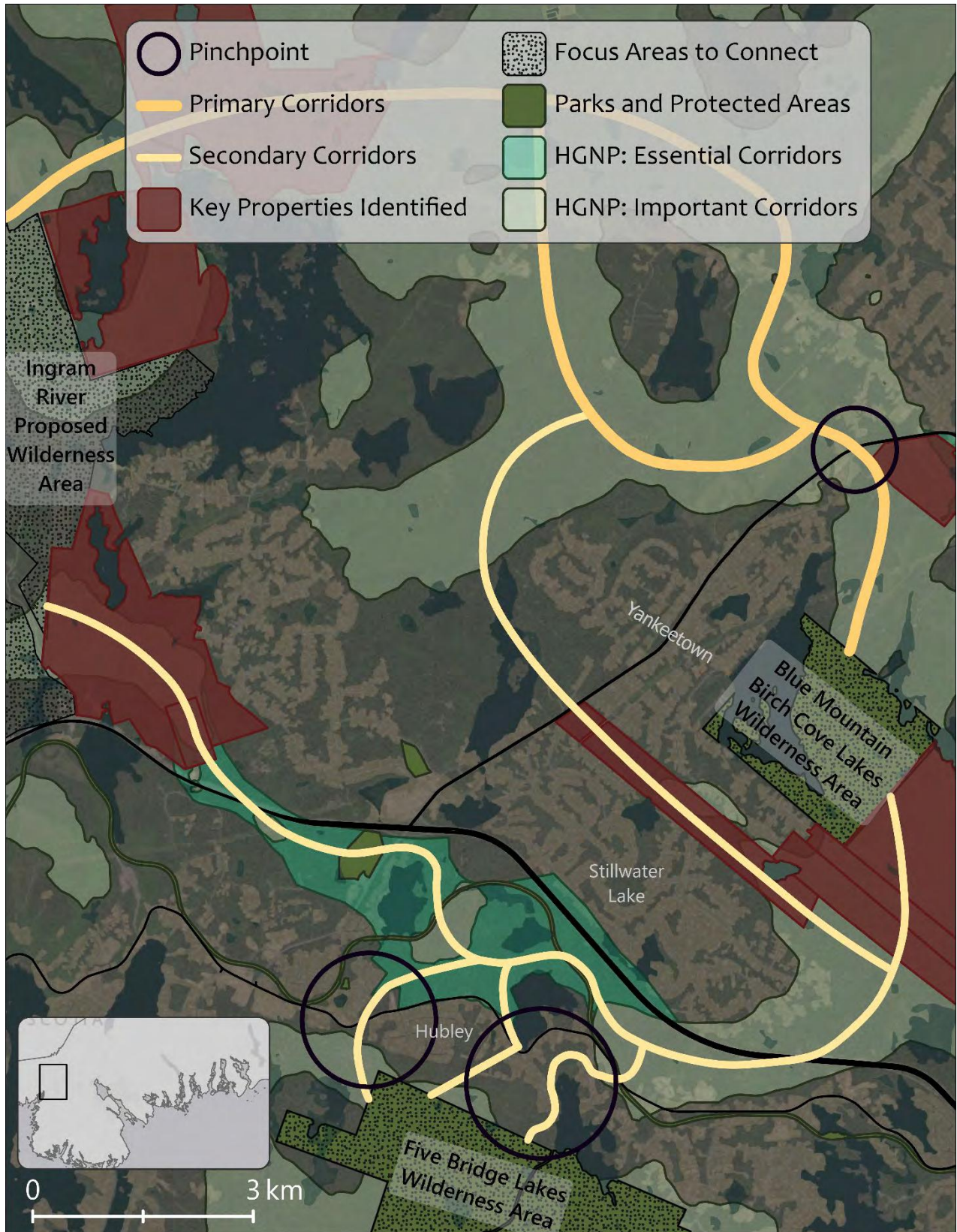


Figure 13 Corridors identified in the southern part of the area of interest



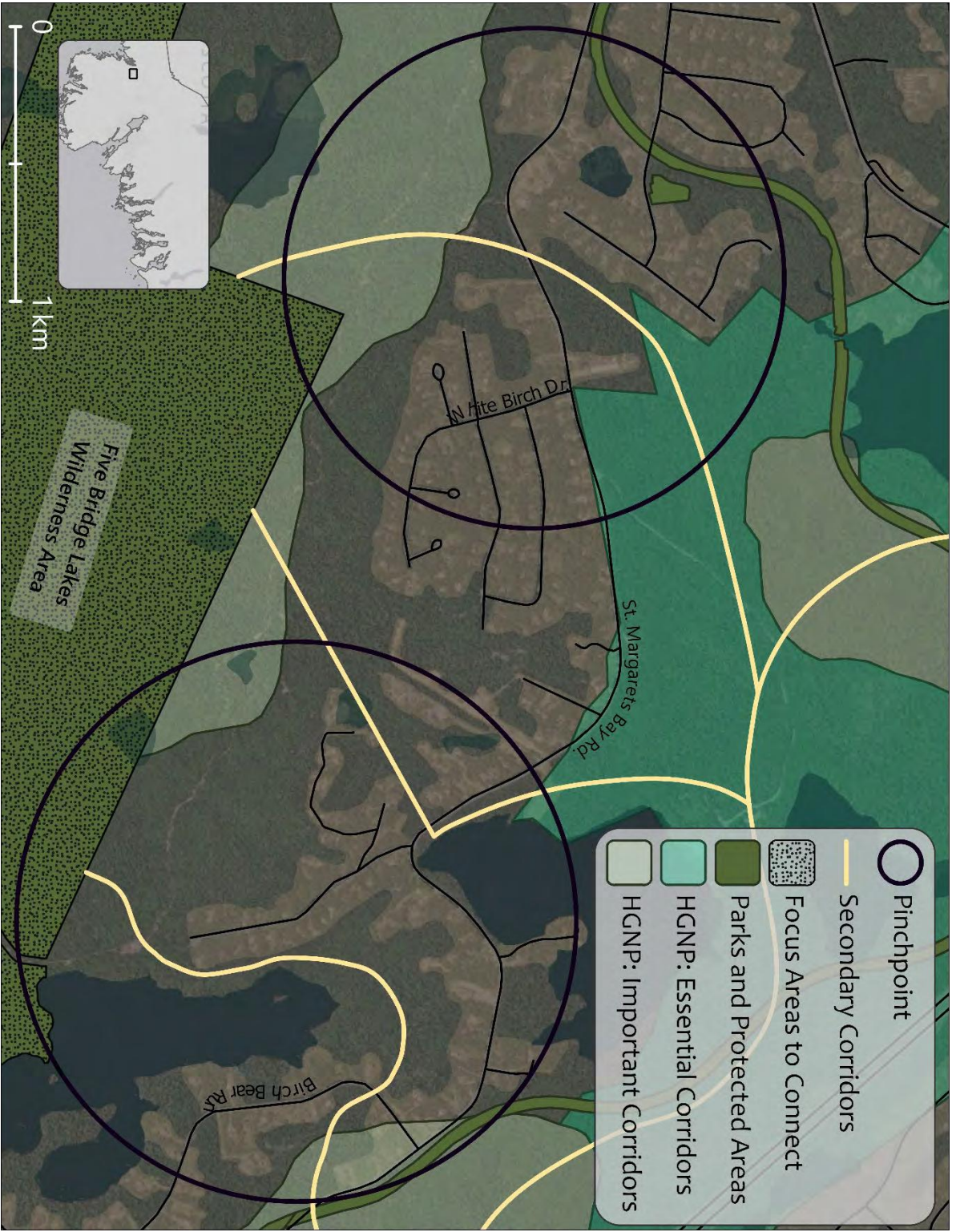


Figure 14 Pinchpoints identified that could connect the southern connection to the Five Bridge Lakes Wilderness Area



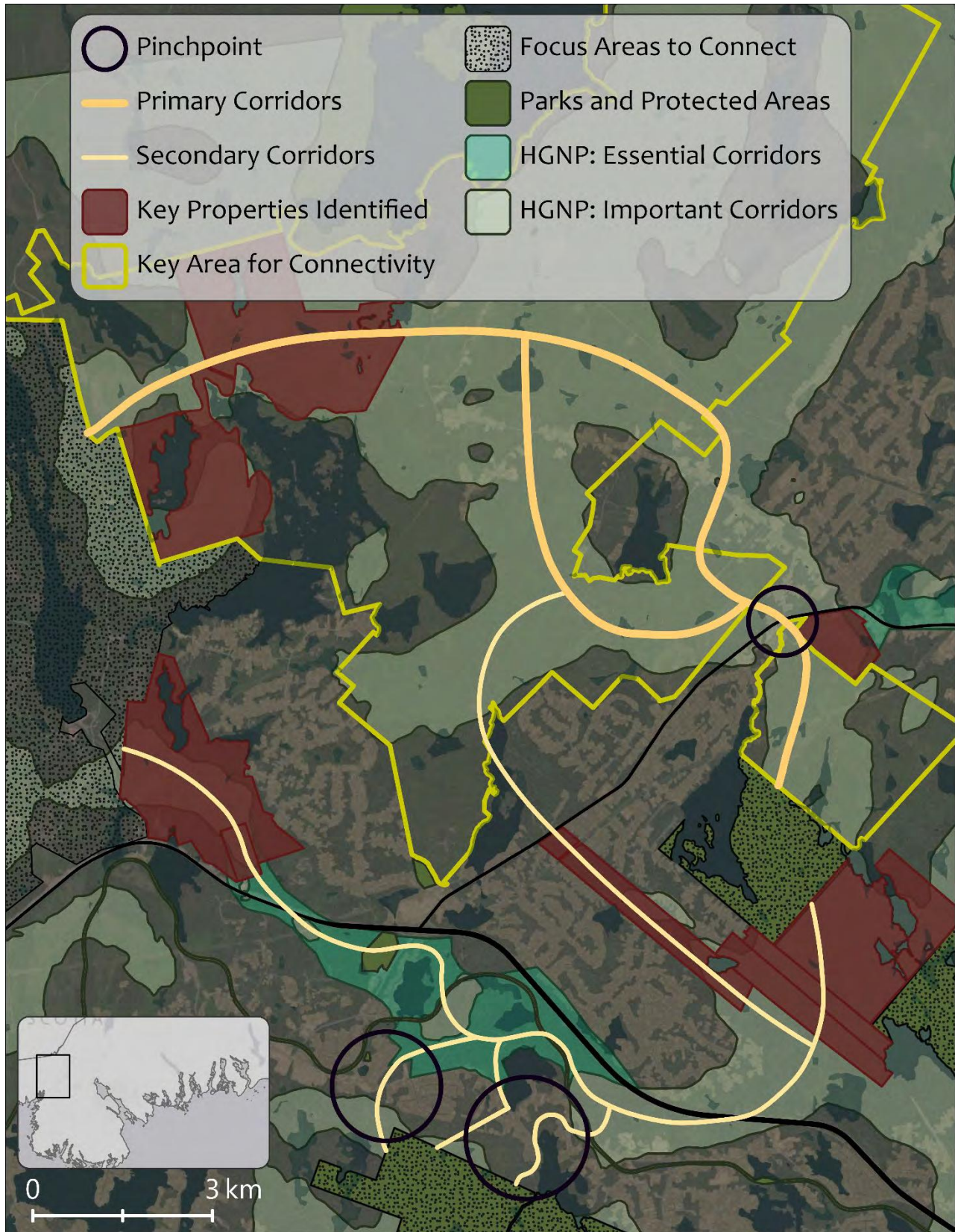


Figure 15 Summary map for the Blue Mountain Birch Cove Lakes to Ingram River Group

## **BLUE MOUNTAIN – BIRCH COVE LAKES TO FIVE BRIDGE LAKES WILDERNESS AREA**

### *Overview of Area*

A third group focused on opportunities for connectivity between two core wilderness areas: Blue Mountain Birch Cove Lakes (BMBCL) and Five Bridge Lakes (Figure 16). The area between the two wilderness areas is bisected by Highway 103 and St. Margarets Bay Road (Highway 3), which presents a challenge for connectivity.

The Halifax Green Network Plan identified three important corridors between the two wilderness areas. First is a corridor that crosses Highway 103 between the communities of Stillwater Lake and Hubley, as also identified as a corridor by the BMBCL–Ingram River group. The second corridor (and the widest of the three), flows from BMBCL through the Sheldrake Lake subdivision before crossing Highway 103 and entering Five Bridge Lakes. The final corridor utilizes the semi-developed land of the Links at Brunello golf course as a connector between the two wilderness areas.

The group noted that the Halifax Green Network Plan does a good job at identifying the corridors in this area. In part, this is because there is not a lot of land that remains undeveloped, so options for connectivity are limited. There are few remaining opportunities: corridors are narrow (generally just a couple of hundred meters wide) and are under threat from future urban development and road construction.

The group noted that while promoting connectivity in the area is important, so is working to expand the formal protection of land in these core areas, particularly BMBCL where several properties to prioritize for protected areas acquisition have already been identified, including lands that the Nova Scotia Nature Trust recently purchased, which are important for both connectivity and maintaining BMBCL as intact core habitat. This is consistent with the HGNP, which shows important corridors as infilling and encompassing the irregular boundaries of the wilderness areas, particularly BMBCL (Figure 16).



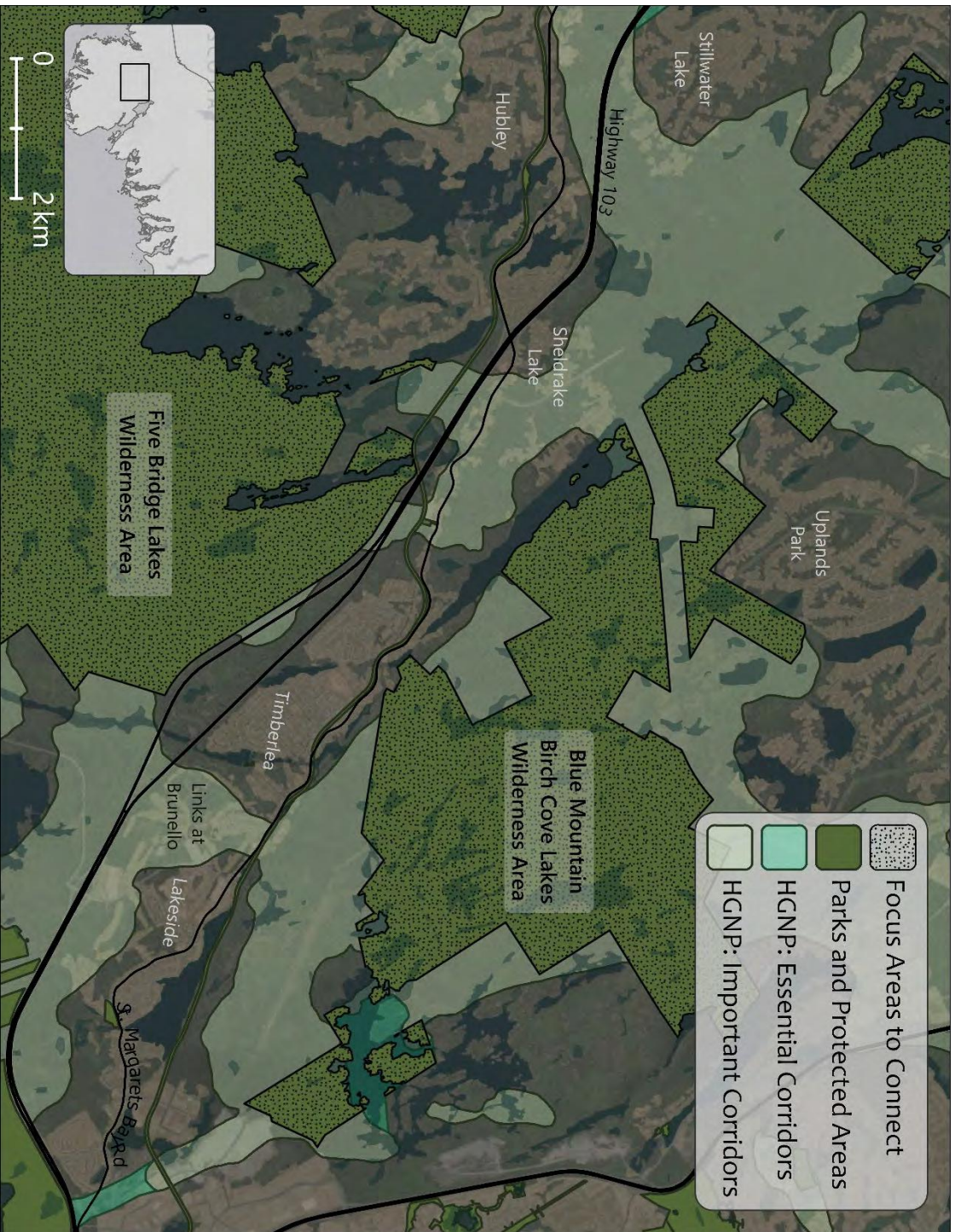


Figure 16. Overview of the area between Blue Mountain Birch Cove Lakes and Five Bridge Lakes Wilderness Areas

### *Primary Connection*

The group identified the main connection between BMBCL and Five Bridge Lakes as the area between Glengarry Estates and Sheldrake Lake subdivisions (Figure 17). This area represents the widest area (about 1.5 km) of potential intact corridor between the two areas of interest. This potential corridor could go under Highway 103 by following the Beechville Lakeside Timberlea Trail, but the group also noted that there are spots along the Highway in this area that have the geological features that would be suitable to the construction of a wildlife overpass because the highway cuts through bedrock and the land is elevated on both sides of the highway. It was also pointed out that there is a potential barrier for terrestrial species in the form of Frasers Lake which runs the length of the gap between two subdivisions, across the path of the potential corridor. Accordingly, it remains important to seek out other opportunities for connectivity, including those requiring restoration.





Figure 17. Primary Corridor Identified between Blue Mountain Birch Cove Lakes and Five Bridge Lakes Wilderness Areas

### *Secondary Connection*

The group identified the same secondary connection as the BMBCL–Ingram River group, connecting the BMBCL to Five Bridge Lakes through NS Nature Trust lands, crossing Highway 103 between the communities of Stillwater Lake and Hubley along the corridor identified in the Halifax Green Network Plan (Figure 18).

Like the BMBCL–Ingram River group, this group identified Crown Land between the communities of Yankeetown and Stillwater Lake as being important for connectivity. Additionally, they point to the two properties between this piece of Crown Land and the lands NS Nature Trust recently purchased as being important to retain in an undeveloped state. In regard to the Crown land, the group notes that there may be the possibility of land swaps to benefit connectivity around Maple Lake (which was identified as being important for both north-south and east-west connectivity), which is under pressure from proposed development (both residential pressures and interest about a potential access road to connect Sussex Dr to Eider Dr.) that would block off potential for connectivity, which is currently key to connecting the Chebucto peninsula to the northern part of the province.

The group identified a potential corridor that branches off the one also identified by the BMBCL–Ingram River group, which goes between Maple and Upper Sheldrake Lakes before crossing Highway 103 and St. Margarets Bay. Once on the south side of the roads, the corridor branches in two, continuing south through the Sheldrake Lake subdivision, connecting to Five Bridge Lakes on the western side of Frederick Lake and following the Beechville Lakeside Timberlea Trail to Five Bridge Lakes near Cranberry Lake.

It was also noted that the Links at Brunello golf course is a relatively low impact development that could contribute to connectivity for some species across the southern extent of the area of interest (Figure 19). They note that there are existing culverts in place that may be able to be upgraded to an open bottom culvert or bridge to enhance connectivity in the area.



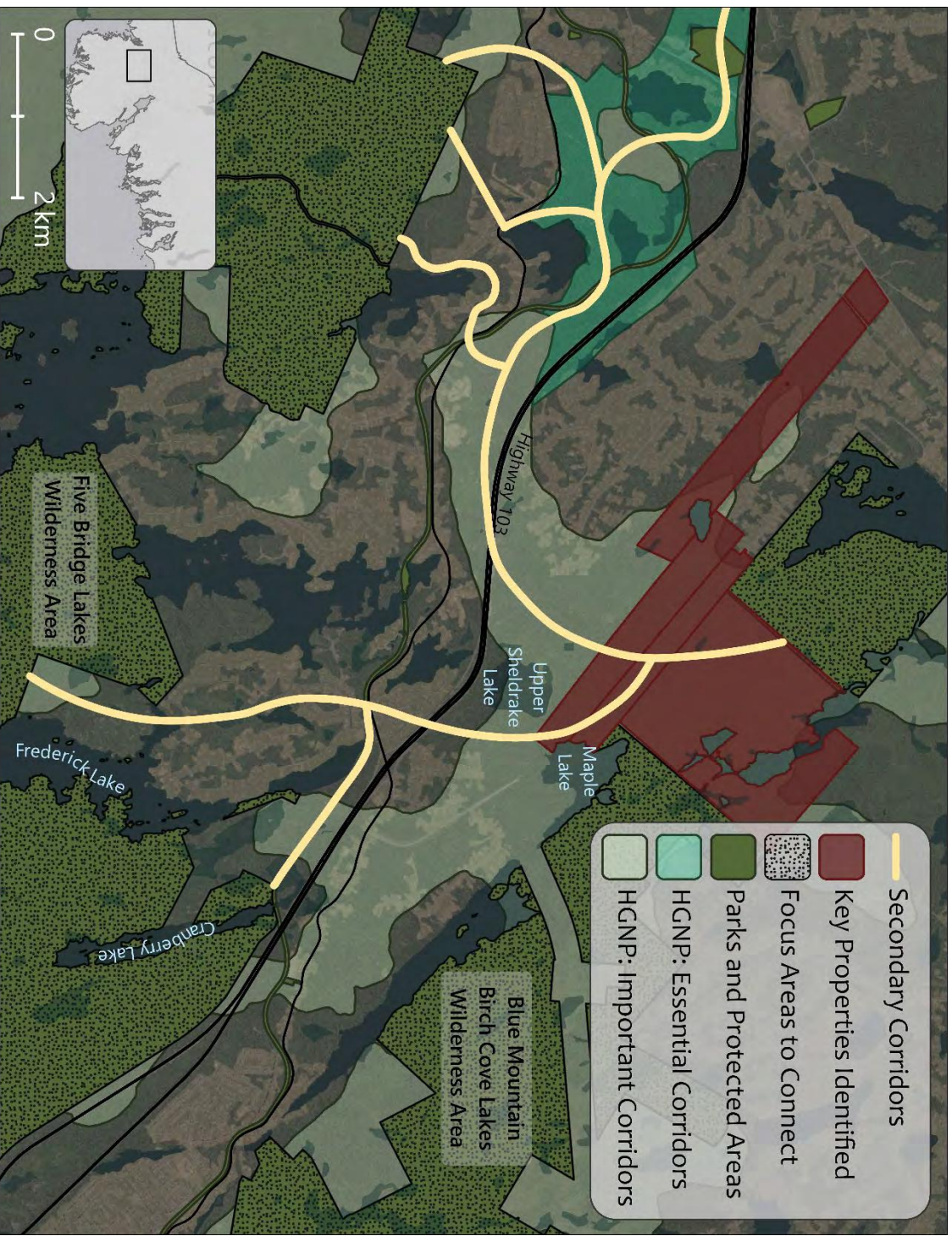


Figure 18. Secondary connection identified between Blue Mountain Birch Cove Lakes and Five Bridge Lakes Wilderness Areas



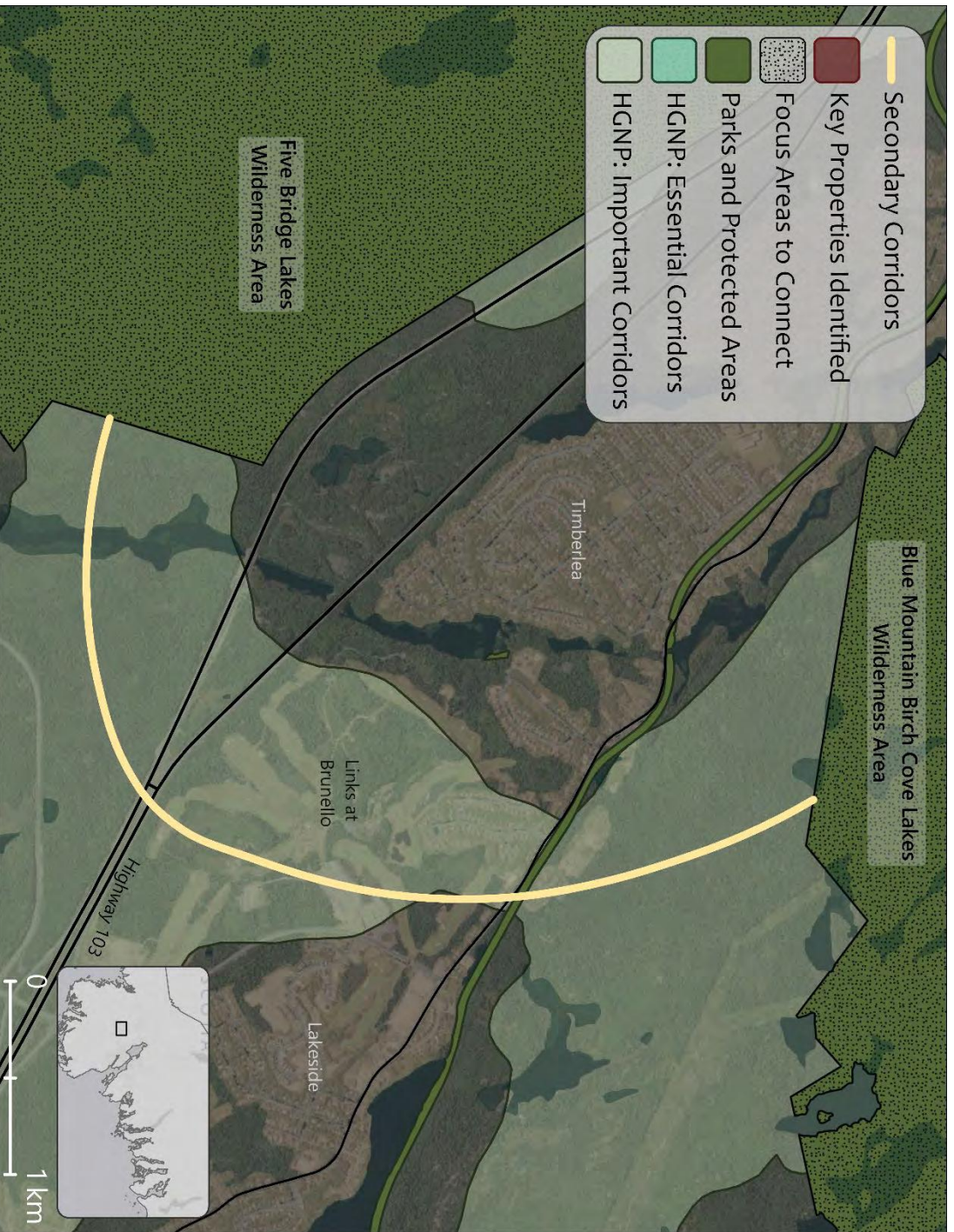


Figure 19. Secondary connection identified between Blue Mountain Birch Cove Lakes and Five Bridge Lakes Wilderness Areas that utilizes the Links at Brunello Golf Course

### *Riparian and Aquatic Connection*

In addition to terrestrial connectivity, the group considered riparian and aquatic connectivity between the two wilderness areas, noting that there is the potential to connect the two areas of interest along the Nine-Mile River, as well as a couple of streams around Governor Lake, Lovett Lake and Black Duck Ponds in the Beechville/Lakeside area (Figure 20).

Points were also raised about aquatic connectivity between BMBCL and the ocean through the Kearney Lake River system to the Bedford Basin. This connection would also link up to the aquatic connections identified by the Sackville River-Sandy Lake to BMBCL group.

Combined, the terrestrial and aquatic areas of connectivity identified for this area of interest roughly support corridors identified in the HGN plan, while noting existing barriers to connectivity and opportunities for restoration (Figure 21).



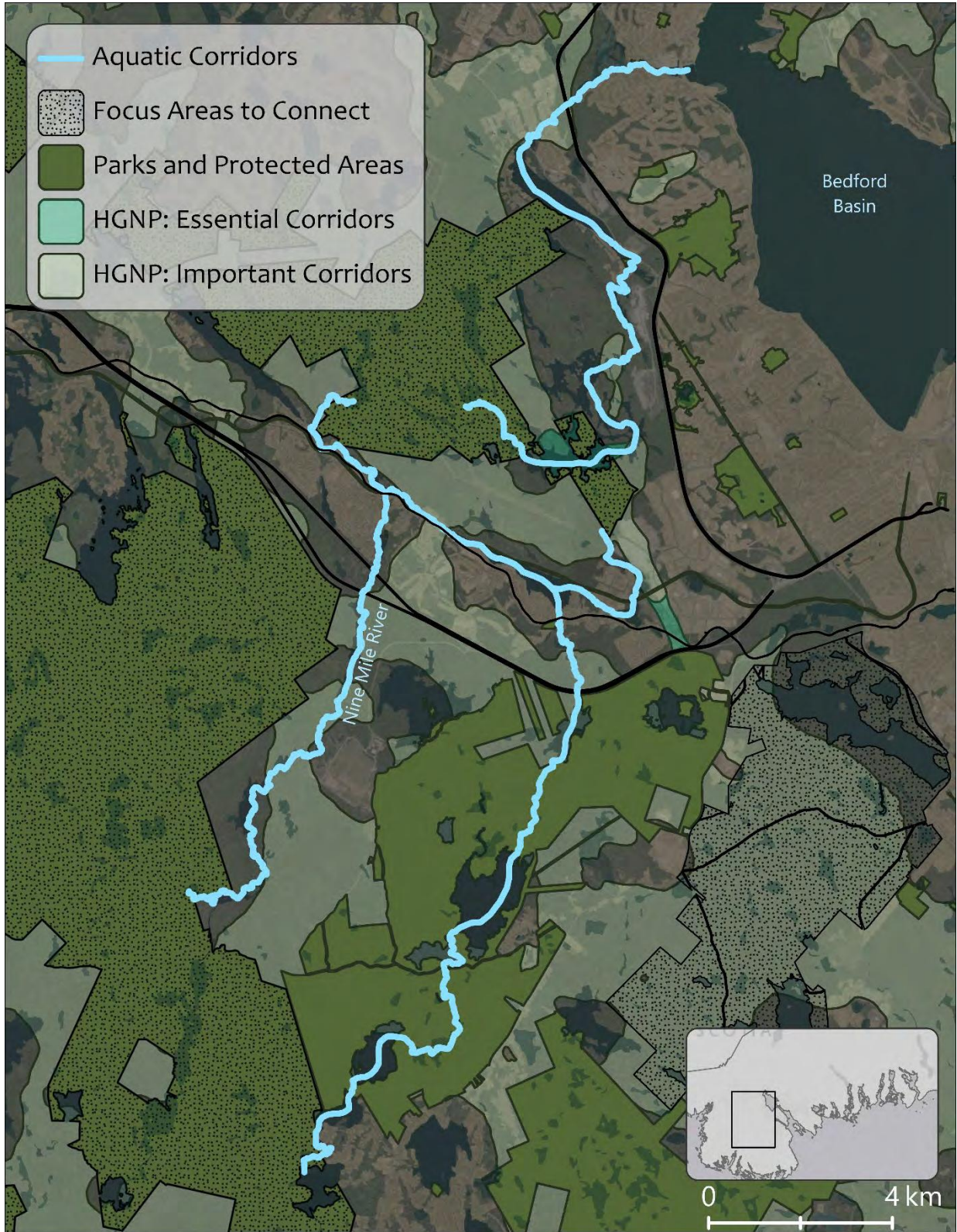


Figure 20. Aquatic Connectivity between Blue Mountain Birch Cove Lakes and Five Bridge Lakes Wilderness Areas as well as Blue Mountain Birch Cove Lakes Wilderness Area and the Bedford Basin via the Kearney Lake watershed



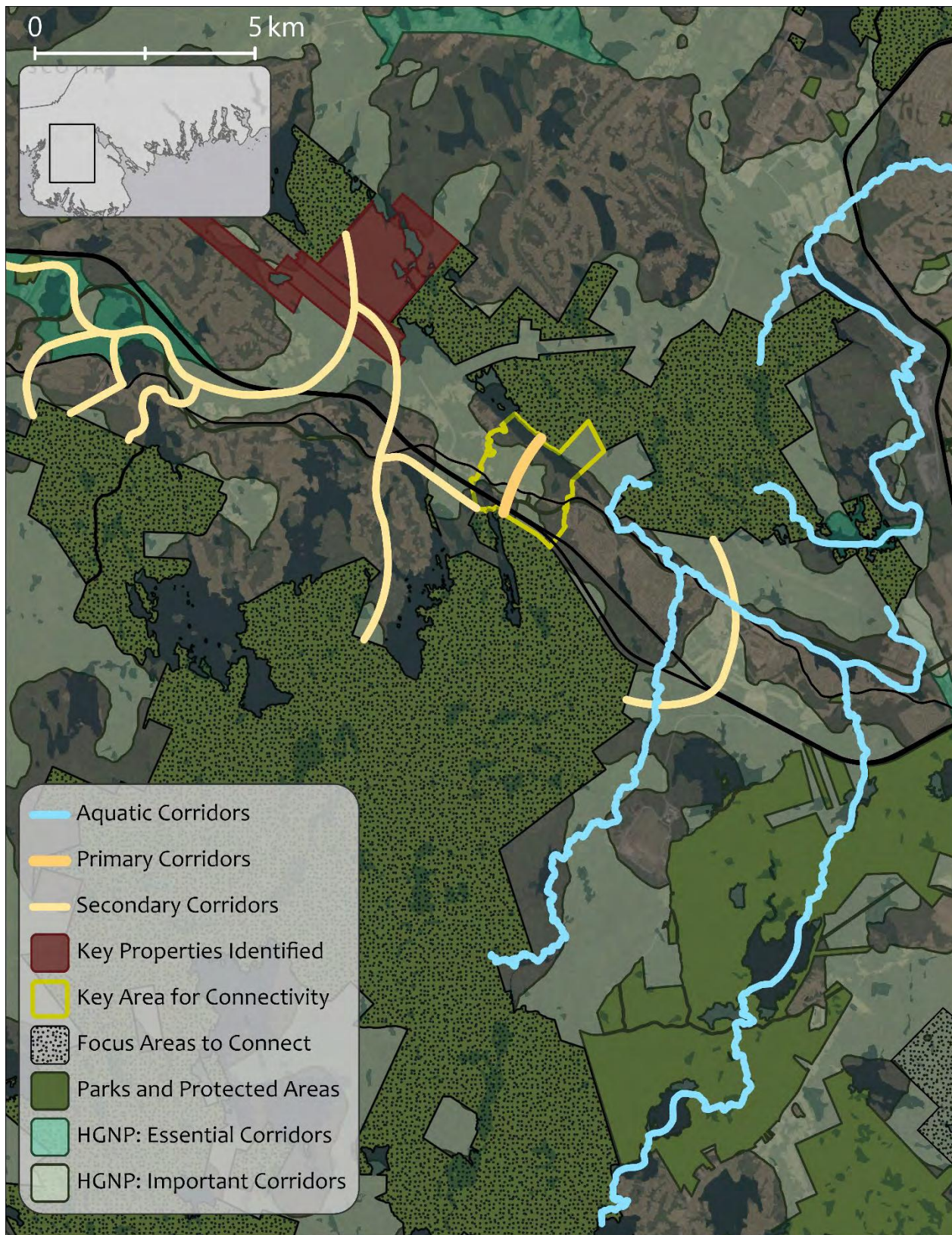


Figure 21. Summary Map for the Blue Mountain Birch Cove Lakes Wilderness Area to Five Bridge Lakes Wilderness Area group

## **FIVE BRIDGE LAKES WILDERNESS AREA TO LONG LAKE PROVINCIAL PARK AND THE BACKLANDS**

### *Overview of Area*

A fourth group focused on connectivity between Five Bridge Lakes Wilderness Area, Long Lake Provincial Park and the Backlands (Figure 22). While there are no major highways acting as barriers for connectivity between these areas, there are several major roads that impact connectivity in the area, namely Herring Cove Road, Old Sambro Road and Prospect Road. Within this area of interest there are several relatively large patches of natural habitat, including the Terrace Bay Wilderness Area, Western Common and several parcels of unprotected Crown Land.

Like the Blue Mountain Birch Cove Lakes to Five Bridge Lakes group, this group noted that while promoting connectivity in this area is important, so is working to expand the protection of core areas of habitat, as much of this area remains undeveloped, but also unprotected and under threat from future development. This is consistent with indications of wide areas of important corridors in the HGPN (Figure 22).





Figure 22. Overview of the area between the Five Bridge Lakes Wilderness Area, Long Lake Provincial Park and the Purcell's Cove Backlands



### *The Backlands*

The group looked at connectivity within the Backlands and identified several properties that should remain undeveloped to maintain connectivity (Figure 23). The primary corridor identified connects Frog Pond Park and the Nova Scotia Nature Trust's Backlands property. The corridor first crosses Williams Lake Road and then goes through several key undeveloped properties before reaching Shaw Wilderness Park and Colpitt Lake (Figure 23). The group also identified a key pinchpoint along this corridor where it crosses Williams Lake Road (Figure 24). On the other side of the Wilderness Park, key properties were identified to ensure a connection to the Nova Scotia Nature Trust's lands. Another key connection was identified between Long Lake Provincial Park and the Backlands, flowing between Old Sambro Road and the Catamaran Ponds was identified as an important wildlife corridor (Figure 23).

Three smaller, secondary connections were identified linking a large, undeveloped piece of Crown land in the Backlands to Herring Cove Provincial Park Reserve, York Redoubt National Historic Site and Connaught Battery Park across Purcell's Cove Road and John Brackett Drive (Highway 253) (Figure 23).



Figure 23. Connectivity within the Backlands



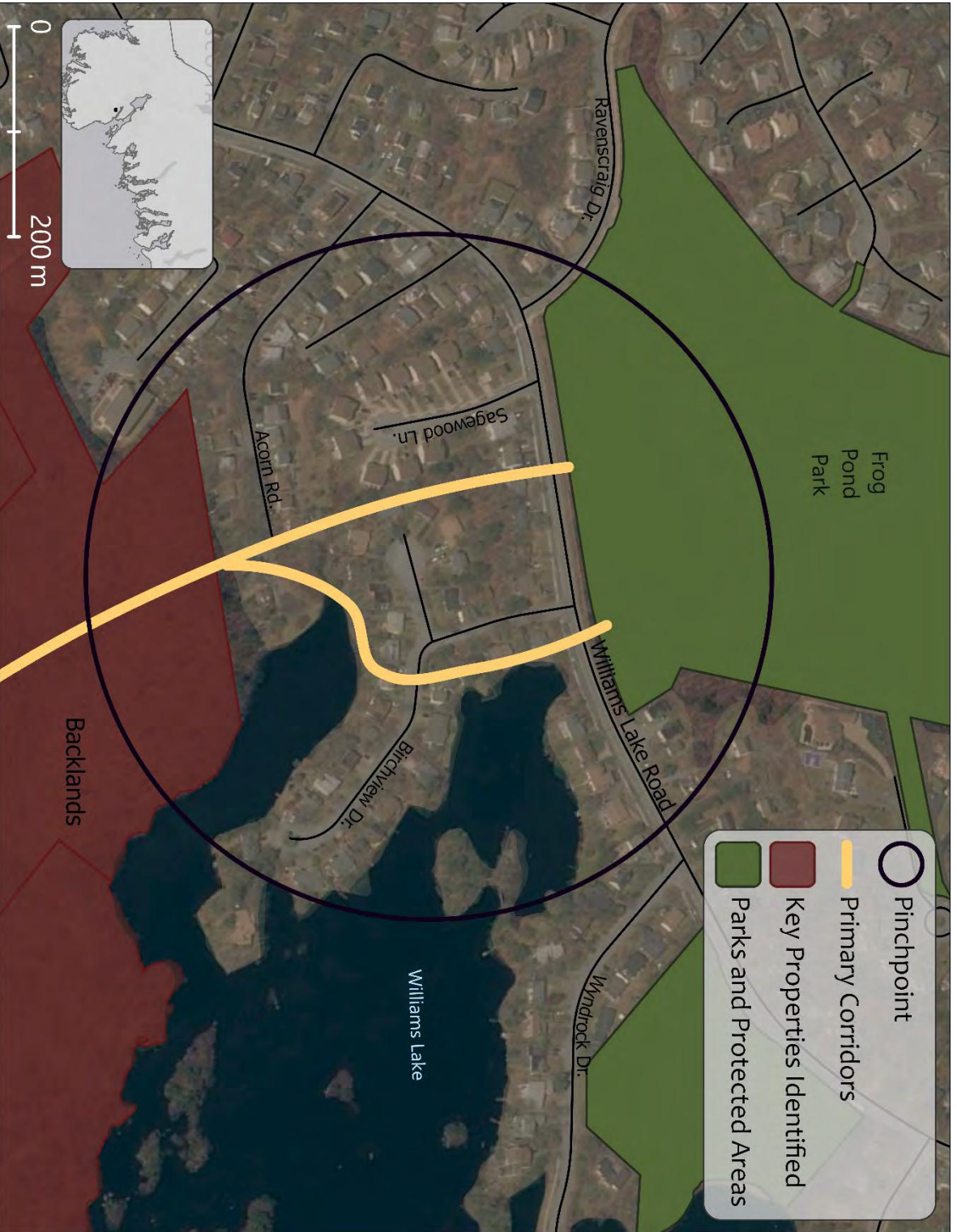


Figure 24. Pinchpoints identified around Williams Lake Road on the corridor connecting Frog Pond Park and the Backlands.



### *The Backlands to Terrace Bay Wilderness Area and Long Lake Provincial Park*

Moving out of the Backlands towards the Terrace Bay Wilderness Area and Long Lake Provincial Park, the first major barrier to connectivity is Herring Cove Road. The group identified several places along the road where development on either side is relatively thin or non-existent between the communities of Herring Cove and Spryfield for potential wildlife crossings (Figure 25).

Beyond Herring Cove Road, a large parcel of Crown land was identified as critical to the conservation strategy of the area. If left undeveloped, the Crown land will continue to act as core habitat and provide contiguity with Long Lake Provincial Park and Terrace Bay Wilderness Area. The group also identified two opportunities for connectivity across Old Sambro Road at locations of large parcels of undeveloped land (currently owned by a development company), which provide natural habitat on both sides of the road in gaps between subdivisions.

The group discussed the importance of securing properties between Long Lake Provincial Park and Terrace Bay Wilderness Area for the long-term protection and expansion of these core habitats. They reported that there has been talk of constructing a road through these lands to connect Harrietsfield and Goodwood, which would disrupt the connectivity that currently remains between the two existing protected areas.



Figure 25. Connectivity between the Backlands and Long Lake Provincial Park and Terrace Bay Wilderness Area



*Terrace Bay Wilderness Area and Long Lake Provincial Park to Five Bridge Lakes Wilderness Area*

The Western Common and the HRM-owned lands adjacent to it provide opportunities for connectivity across Prospect Road, connecting Long Lake Provincial Park to Five Bridge Lakes Wilderness Area (Figure 26). The group noted that there are a few low-hanging fruits for connectivity across the road where there is parkland on both sides of the road. However, these are not the only opportunities for connectivity, but the others would require connections between currently unprotected (though undeveloped) parcels.

The group made the case that all of the lands and waters between Long Lake Provincial Park and Terrace Bay and Five Bridge Lakes Wilderness Areas should be managed for connectivity because, despite the Otter Lake Landfill and other areas of disturbance, there likely remains high permeability for many species of wildlife through the area. They also note that by doing so, it would provide a wide (~6 km) corridor which would serve black bear and other large and/or sensitive wildlife species.

A corridor between Five Bridge Lakes and Terrace Bay Wilderness Areas that also builds a connection to the Roges Roost Wilderness Area was identified (Figure 27). The corridor largely follows an important corridor identified in the Halifax Green Network Plan in the area to north of Shad and Prospect Bays.

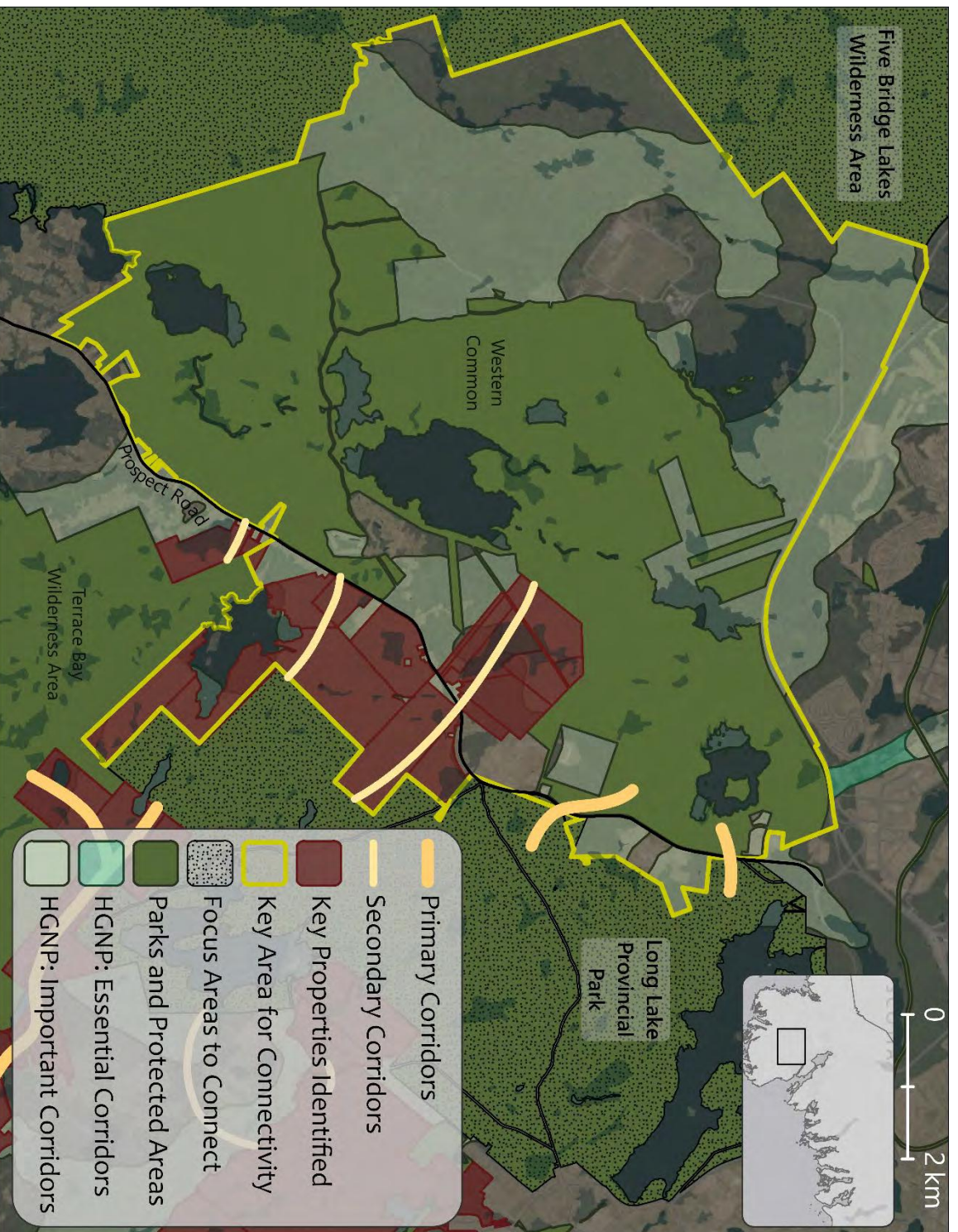


Figure 26. Connectivity between Long Lake Provincial Park and Five Bridge Lakes Wilderness Area, highlighting the key area around the Western Common and connections over Prospect Road.



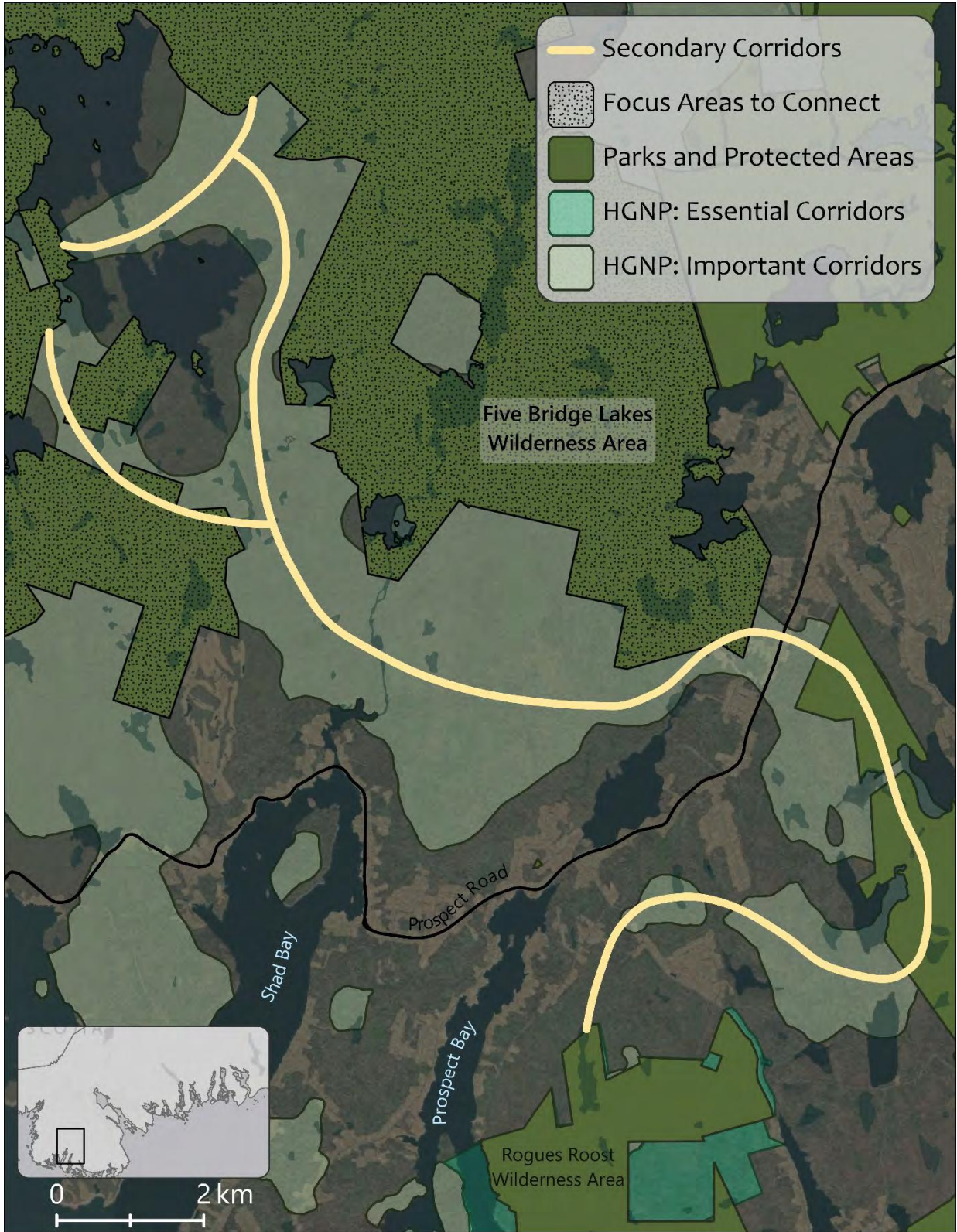


Figure 27. The corridor identified between Five Bridge Lakes, Terrace Bay and Rogues Roost Wilderness Areas.

### *Aquatic Connectivity*

Several corridors for aquatic connectivity in the Backlands were identified (Figure 28). The first is Governor's Brook which flows from two Catamaran Ponds behind the Sobeys in Spryfield to Colpitt and Williams Lake. The Catamaran Ponds are the headwaters for Colpitt and Williams Lake and thus need to be adequately protected. Secondly, although it is a relatively built-up area, there is the possibility for aquatic connectivity between Long Lake and Kidston Lake through Spryfield. An aquatic connection between Long Lake and Herring Cove through the MacIntosh Run and Pine Islands Ponds was also identified.

Together, these key properties and corridors represent crucial opportunities for protecting core areas and connectivity in a region that comprises relatively large and intact parcels of Crown and other undeveloped lands (Figure 29). Much of these lands abutt and overlap important corridors identified in the HGPN. Despite their condition at present, important threats to connectivity exist due to existing and potential future road and other developments and or resource extractions.



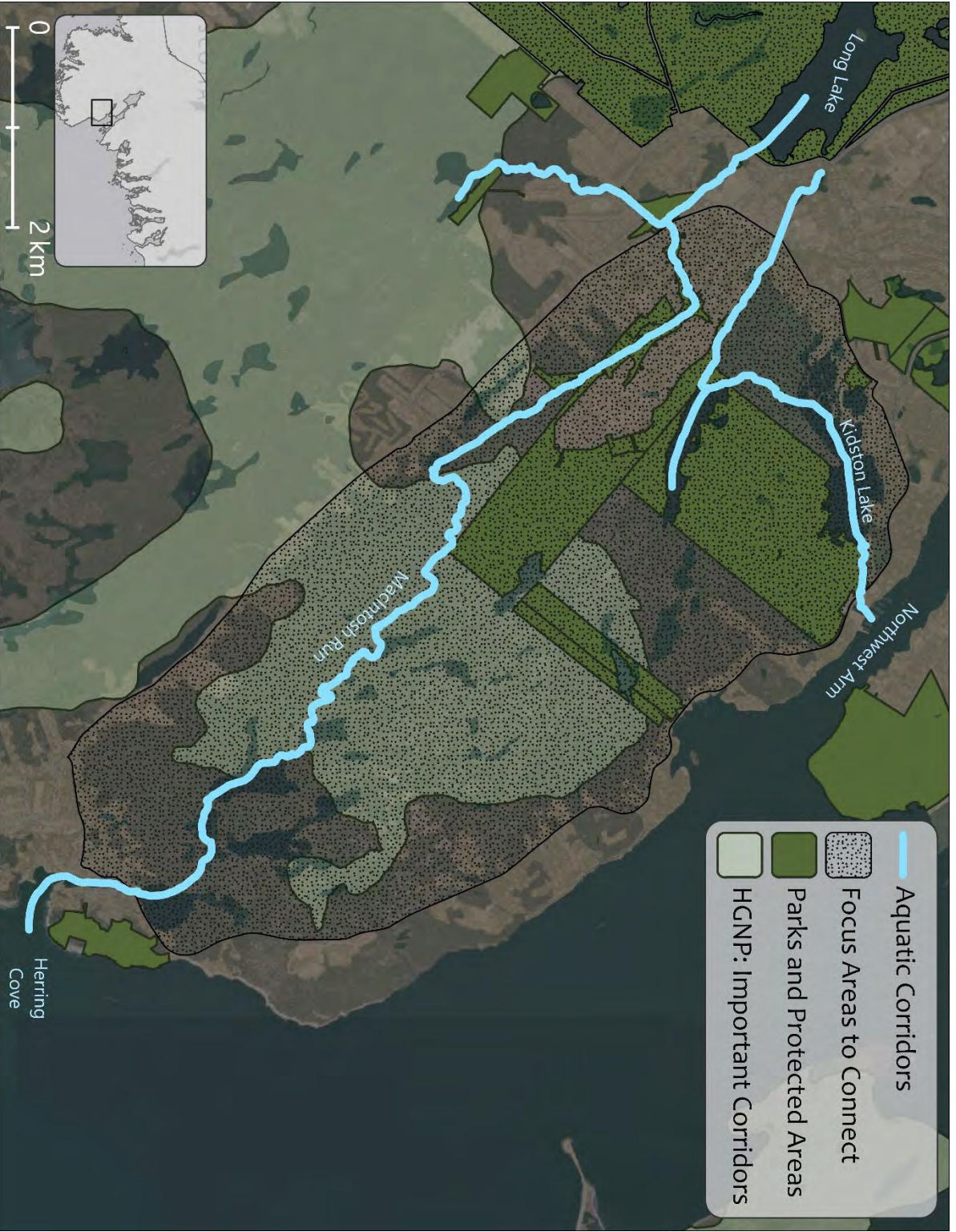


Figure 28. Aquatic Connectivity in the Backlands



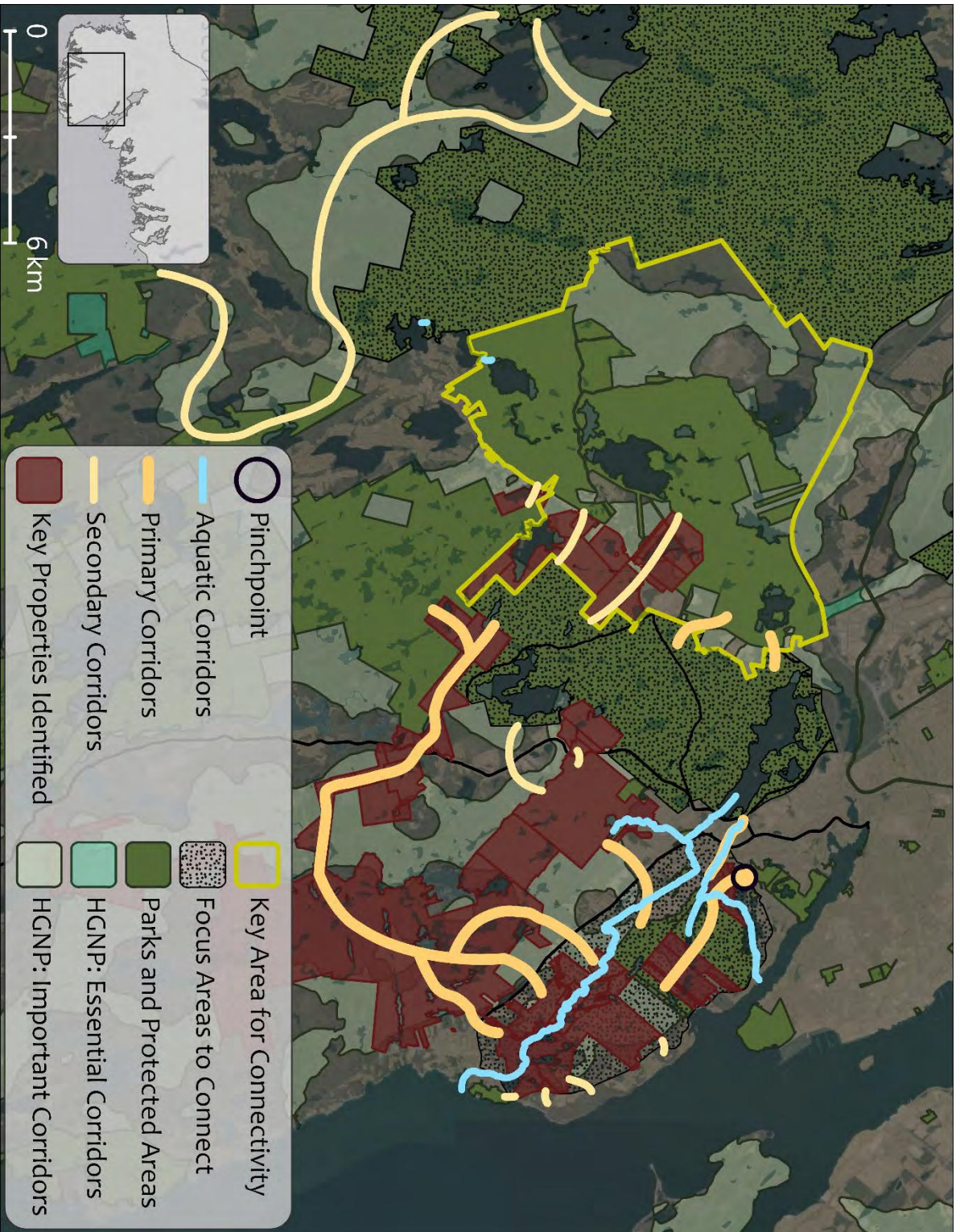


Figure 29. Summary map for the Five Bridge Lakes Wilderness Area to Long Lake Provincial Park and the Backlands group



## Summary

Putting together the products of all four groups produces a conceptual map for wildlife corridors through a critical yet threatened part of HRM, where the Chebucto Peninsula connects with the rest of mainland Nova Scotia. The mapped area of interest extends from the Sandy Lake-Sackville River area through BMBCL to the Ingram River area and through Five Bridge Lakes, Terrance Bay and Rogues Roost Wilderness Areas and Long Lake Provincial Park to the Backlands. While many of these corridors follow those that were identified in the Halifax Green Network Plan, some are not, highlighting the importance of considering connectivity at the fine scale and communicating with those who have an intimate knowledge of the local landscape (Figure 30).

It is important to note that while the corridors in the maps throughout this document are symbolized by thin lines, they should not be interpreted as such. Rather, the lines showing the corridors represent the centerlines of corridors, the width of which should be as large as possible. In addition to the indicated corridors, numerous key properties for the maintenance or restoration of connectivity were identified. Currently, these properties are not explicitly managed for wildlife corridor conservation and are owned by a number of different landowners including the Crown, HRM, lumber and utility companies, and private developers. Each group also identified at least one broad swath of land which is crucial to connectivity, and also for expanding core areas for conservation. These areas represent prime opportunities for buffering, supplementing, or expanding core areas, and for securing corridors wide enough to serve large and sensitive species of wildlife while safeguarding against edge-effects and human land uses and activities along their boundaries. Other areas crucial to connectivity are currently limited to narrow corridors and several require restoration. Nonetheless, they are important to secure as remaining remnants of essential corridors and for planned redundancy within the connected network.

In the areas of HRM focused upon in this report, as is likely the case in much of HRM, opportunities for conserving wildlife connectivity are being lost daily. It is imperative that systematic planning that precisely identifies and delineates the boundaries of core areas and corridors in a green/ecological network design be completed in the very near future. Strategic short-term and long-term measures that implement the protection of core areas and corridors need to be developed and put in place. Moving forward, in addition to formal land conservation through land securement (e.g., land purchase, conservation easements), creative mechanisms for maintaining and restoring connectivity in key areas will be required, such as: zoning; right of first refusal for purchasing key private properties; formal easements and rights of ways along riparian areas, through subdivisions and along roadways; planned corridors associated with land development approvals; and road mitigation measures such as fences, overpasses, underpasses, bridges and box culverts.

Many local individuals and groups have formal and experiential knowledge of the land, wildlife, and connectivity planning. Collaborative partnerships between governments at all levels, including the Mi'kmaq, non-government organizations and other interested parties, and citizens would support the co-production of knowledge while building constituents of support.

The charrette has served to expand the understanding of issues, priorities and opportunities relating to ecological connectivity within the context of the Chebucto Peninsula and the greater Mainland and, by extension, within Nova Scotia and between Nova Scotia and continental North America.

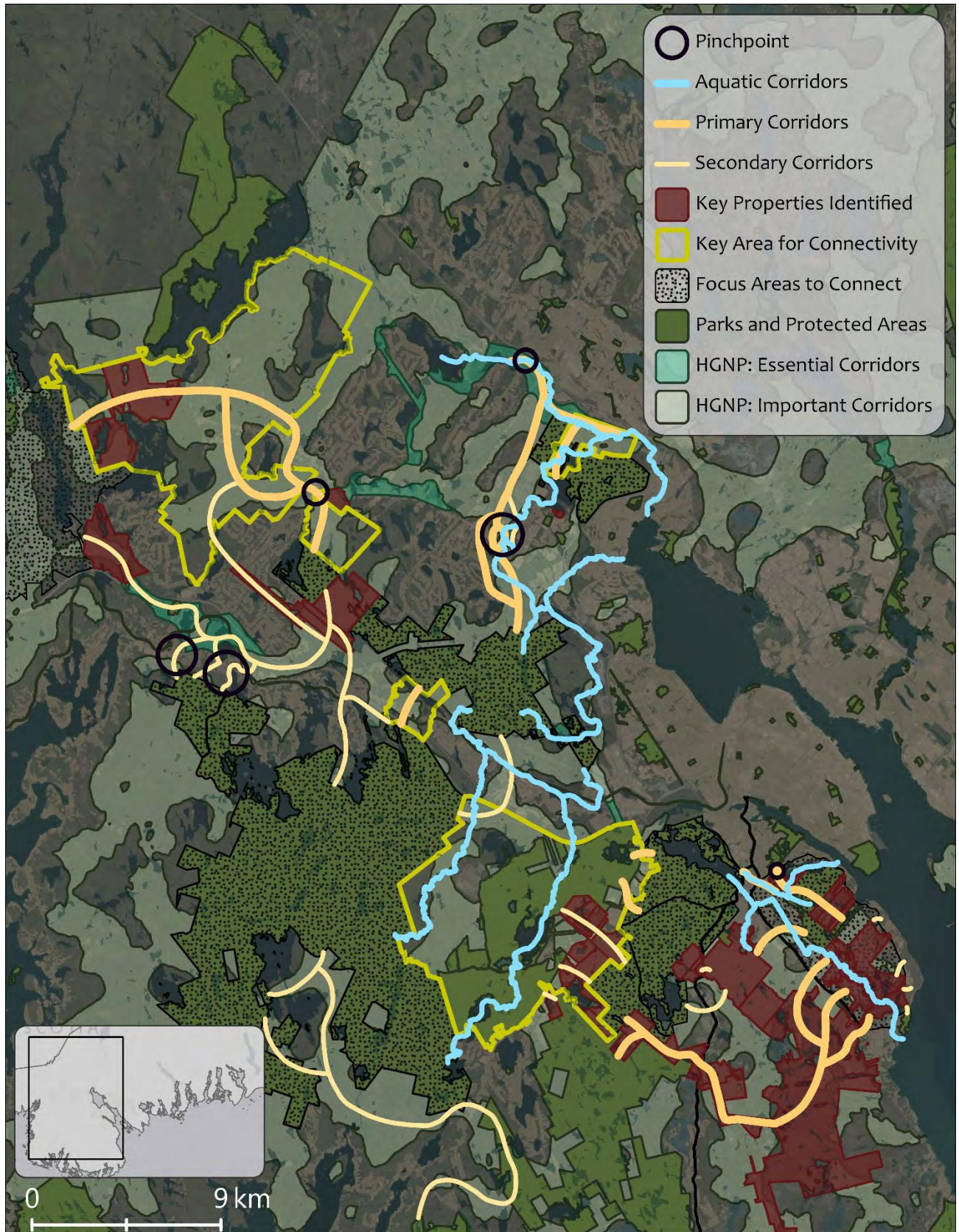


Figure 30. Summary map showing the work of all of the groups during the charrette



In order to move beyond understanding toward specific efforts to ensure ecological connectivity is protected (or restored where already compromised), it is useful to consider next steps as informed by the charrette exercise, including:

- advance recommendations through the ongoing review and update of the 2014 regional plan, relative to priority and direction with respect to ecological connectivity;
- build in ecological connectivity as a priority interest and requirement to be addressed where relevant at the local planning level;
- establish an ongoing relationship with the Department of Transportation and Active Transit to identify and address connectivity issues and opportunities associated with highway construction or upgrading;
- identify and delineate opportunities and options to protect, maintain and/or restore 'essential' and 'important' corridors through field study and ground-truthing and in consideration of existing patterns of property ownership and land use;
- coordinate field study, mapping and planning efforts amongst responsible agencies, organizations and/or advocacy groups; and
- identify funding sources and partnerships.

In the absence of focussed effort and action, development will continue to encroach on rapidly narrowing options and opportunities to maintain or restore ecological connectivity between the Chebucto Peninsula and the greater Mainland, and effective foreclosure soon will become the inevitable and ultimate outcome.

### *References*

Brooks, C. (2003). A scalar analysis of landscape connectivity. *Oikos*, 102(2), 433–439.

Ford, A. T., Sunter, E. J., Fauvelle, C., Bradshaw, J. L., Ford, B., Hutchen, J., Phillipow, N., & Teichman, K. J. (2020). Effective corridor width: linking the spatial ecology of wildlife with land use policy. *European Journal of Wildlife Research*, 66, 69. <https://doi.org/10.1007/s10344-020-01385-y>

Halifax Regional Municipality. (2006). *Regional Municipal Planning Strategy*. Halifax Regional Municipality.

Halifax regional Municipality. (2014). *Regional Municipal Planning Strategy. October 2014*. Available: <https://www.halifax.ca/sites/default/files/documents/about-the-city/regional-community-planning/RegionalMunicipalPlanningStrategy-20Nov07-Case21162-TOCLinked.pdf>

Halifax Regional Municipality, & O2 Planning and Design. (2018). *Halifax Green Network Plan*.

Taylor, P. D., Fahrig, L., Henein, K., & Merriam, G. (1993). Connectivity is a vital element of landscape structure. *Oikos*, 68(3), 571–573.

## **APPENDIX I: CHARRETTE PARTICIPANTS**

### *Organizers*

Karen Beazley, Chair, Nova Scotia Crown Share Land Legacy Trust  
Dale Smith, Trustee, Nova Scotia Crown Share Land Legacy Trust  
Mary Ellen Donovan, Friends of Blue Mountain – Birch Cove Lakes Society, Sandy Lake – Sackville River Regional Park Coalition

### *Technical Organizers*

Karen McKendry (Remote Platform Host), Ecology Action Centre  
Dave MacKinnon (GIS Resource Person); Chair, Science Advisory Committee, Nova Scotia Crown Share Land Legacy Trust

### *MC/Host of Charette*

Karen Beazley, Chair, Nova Scotia Crown Share Land Legacy Trust; Dalhousie University

### *Sandy Lake – Blue Mountain Birch Cove Lakes*

GIS Resource Person: Caitlin Cunningham, Dalhousie University

Mary Ellen Donovan  
Lisa Doucette  
David Patriquin  
Karen Robinson  
Walter Regan  
Clarence Stevens

### *Blue Mountain Birch Cove Lakes – Ingram River*

GIS Resource Person: Kermit deGooyer, Nova Scotia Environment – Protected Areas

Emma Kinley  
Mike Lancaster  
Oliver Maass

### *Blue Mountain Birch Cove Lakes – Five Bridge Lakes*

GIS Resource Person: Pat Nussey, Nature Conservancy of Canada

Rich LaPaix  
Chris Miller  
Megan Pagnello  
Jan Skora  
Dale Smith

### *Five Bridge Lakes – Long Lake Provincial Park and the Backlands*



GIS Resource Person: Dave MacKinnon, Nova Scotia Environment – Protected Areas

Kathleen Hall  
Martha Leary  
Peter Lund  
Patricia Manuel  
Jillian Meredith

*Observers*

Kathleen Fralic, Planning and Development, Halifax  
Leah Perrin, Planning and Development, Halifax

*Summary Report Preparation and Cartography*

Caitlin Cunningham

## APPENDIX II: GIS LAYERS USED

### *Nova Scotia Provincial Datasets*

#### CROWN LAND

A spatial dataset of all Crown lands in Nova Scotia. Crown lands are all or any part of the land under the administration and control of the Minister of Lands and Forestry as per the Crown Lands Act. The dataset includes land in which the Nova Scotia Department of Lands and Forestry has full or partial interest. Data download available at: <https://data.novascotia.ca/Lands-Forests-and-Wildlife/Crown-Land/3nka-59nz>

#### NOVA SCOTIA FOREST INVENTORY

Layers containing polygons for all lands in the province as described in the Photo Interpretation Specifications. Includes water, forested and non-forested areas with additional identification of freshwater wetlands and coastal habitat area classifications. Data download available at: <https://novascotia.ca/natr/forestry/gis/forest-inventory.asp>

#### NOVA SCOTIA PROTECTED AREAS SYSTEM

These lands help preserve Nova Scotia's natural values through a blend of legislation, ownership and management. Included here are: National Parks, National Wildlife Areas, Provincial Wilderness Areas, Provincial Nature Reserves, selected Provincial Parks and selected land trust properties and easements. This combination of federal, provincial and private lands contributes to both provincial and national land conservation and biodiversity goals. Data download available at: <https://data.novascotia.ca/Environment-and-Energy/The-Nova-Scotia-Protected-Areas-System/ticv-5du5>

#### NOVA SCOTIA ROAD NETWORK

Nova Scotia Road Network (NSRN) is a digital representation of all the roadways in Nova Scotia. The NSRN has several descriptive attributes to define a roadway such as number of lanes, surface type, and road class. The NSRN is a networked data set complete with linear entities such as roadways as well as point entities such as junctions and blocked passages. The NSRN data conforms to the federal government's National Road Network (NRN) and is regularly uploaded as a contribution to the NRN. Data download available at: <https://data.novascotia.ca/Roads-Driving-and-Transport/Nova-Scotia-Road-Network-NSRN-/484g-adjn>

#### NOVA SCOTIA PROPERTY LINES

Dataset that delineates property lines across the province.

#### NOVA SCOTIA HYDROGRAPHIC NETWORK

The Nova Scotia Hydrographic Network (NSHN) is updated and maintained from aerial photography. Hydrographic features (banks, network linear features, junctions, etc...) are collected and networked into a seamless database. Attribution has been applied to reflect network directionality as well as network priority (main vs. secondary path). Toponyms are included in the attribute table for named hydrographic linear, point and polygon features. Hydrographic feature codes and their descriptions are provided with the download in a NSTDB feature code table. Data download available at: <https://nsgi.novascotia.ca/gdd/>



## *Halifax Regional Municipality Datasets*

### HALIFAX GREEN NETWORK PLAN

The Halifax Green Network Plan was adopted by Halifax Regional Council on August 14, 2018. The underlying data to support the maps in the plan document have been released through open data. Please visit <https://www.halifax.ca/about-halifax/regional-community-planning/community-plans/halifax-green-network-plan> for complete information. Data download available at: <https://www.halifax.ca/home/open-data/open-data-files#HGPN>

### HRM PARKS

Polygon representation of HRM owned and maintained parks. Includes areas that have been developed as parks and land with the primary function of providing active and/or passive recreation opportunities. Data download available at: [https://catalogue-hrm.opendata.arcgis.com/datasets/3df29a3d088a42d890f11d027ea1c0be\\_0?geometry=-68.390%2C44.111%2C-57.937%2C45.475](https://catalogue-hrm.opendata.arcgis.com/datasets/3df29a3d088a42d890f11d027ea1c0be_0?geometry=-68.390%2C44.111%2C-57.937%2C45.475)